



Whistle in the Sky

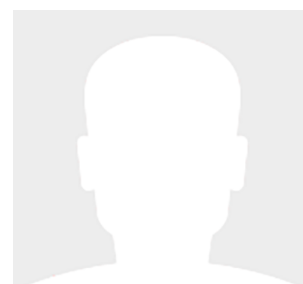
38' (11.58m) 2007 Rampage Express
Port St Lucie Florida United States



OVERVIEW

\$239,000

| | | | |
|---------------|-----------------|----------------|-------------------|
| Manufacturer: | Rampage | Hull Material: | Fiberglass |
| Engines: | 2 Cat 9 | Cruise Speed: | |
| Engine Model: | | Max Speed: | |
| Engine HP: | 575 | Cabins/Heads: | 1 / 1 |
| Beam: | 13' 9" | Fuel Type: | Diesel |
| Max Draft: | " | Fuel: | 512 G (1938.13 L) |
| Water: | 60 G (227.12 L) | | |



Mike Marrocco mmarrocco@hmy.com

561-657-6117



Data Sheet

Category: Sport Fishing
Condition: Used
Model Year: 2007
Beam: 13'9" (4.19m)
LOA: 38' (11.58m)
Cabins: 1
Heads: 1

Fuel Type: Diesel
Hull Material: Fiberglass

Dry Weight: 24000 lbs
Fuel Tank: 512 gal (1938.13 liters)
Fresh Water: 60 gal (227.12 liters)
Holding Tank: 39 gal (147.63 liters)
HIN/IMO: N/A

Engines/Generators

Engine 1

Cat 9
Inboard
575HP
428.78KW
Fuel: Diesel
Hours: 1053

Engine 2

Cat 9
Inboard
575HP
428.78KW
Fuel: Diesel
Hours: 1053



Summary/Description

"Whistle in the Sky" Lift kept and easily to view in Port St. Lucie, this 2007 Rampage 38' Express "Whistle in the Sky" is ready for her next owner. 2007 38 Rampage Express is a versatile boat, "Whistle in the Sky" is built on a fully cored hull with a relatively wide beam and an efficient 19 degree

"Whistle in the Sky"

Lift kept and easily to view in Port St. Lucie, this 2007 Rampage 38' Express "Whistle in the Sky" is ready for her next owner. 2007 38 Rampage Express is a versatile boat, "Whistle in the Sky" is built on a fully cored hull with a relatively wide beam and an efficient 19 degrees of transom deadrise. The deck layout of the Rampage 38 has a center helm pod forward with an L-shaped lounge to port and wet bar opposite. Aft, the cockpit is equipped with two removable in-deck fish boxes, a custom 55-gallon livewell (with a top-mounted window), a molded tackle center, and a transom door and gate. The entire bridge deck lifts on a pair of hydraulic rams to reveal a spacious and well-designed engine compartment. Below, the cabin of the 38 will accommodate four with a double berth forward and a convertible U-shaped dinette to port. Additional features include excellent cabin headroom, a separate stall shower in the head, power windshield center vent, hinged helm (for access to the wiring), tilt steering, and cherrywood interior trim. "Whistle in the Sky" had all new Simrad electronics in April of 2023 making her a very attractive option to get you and your family out fishing.

Recent Upgrades

Recent Upgrades:

April 2023

Simrad NSS12 Evo3S features a high-definition 12-inch display that delivers big-picture views of charts, radar, sonar, and more under all conditions. Featuring a IMX 8 high-performance processor, with superfast response times, you have control of an unprecedented level of built-in functionality, ultra-wide viewing angles, and reliable touch or keypad operation. Includes preloaded C-MAP® charts.

Simrad HALO 2004 Open Array Radar Benefit from safer navigation and unmatched ease of use with the new HALO® 2000 Open Array radar. Advanced Pulse Compression technology allows you to detect birds, hazards and storms with superior precision across both short and long distances. While the range of Preset Modes and enhanced power provide constant peace of mind.

September 2023

Simrad AP44 VRF High Capacity Autopilot Pack Set your heading and access advanced pilot modes with the intuitive AP44 Autopilot Controller, featuring a 4.1-inch full color display and rotary control dial.

Engine Room

- Located under large actuated floor hatch
- Twin Caterpillar C9 Marine Diesel Engines
- Twin ZF Gears
- Kohler Generator
- Engine and house battery banks
- Battery chargers



- Glendining cable master reel
- Engine room ventilation fans
- Fireboy automatic fire extinguishing system
- Reverso Oil Change System

Cockpit

- Port and starboard insulated boxes in forward cockpit console w/ prep area in center
- In-deck fuel tank/valve access
- Molded in step boxes to port and starboard
- In-deck fish box hatches to port and starboard
- Lazarette hatch w/ removable storage box
- Transom tuna door w/ lift gate
- Transom livewell w/ acrylic lid
- Fish box with macerator pump

Helm Deck

- L-shaped seating lounge w/ storage underneath
- Single companion seat to starboard
- U-line Icemaker
- Starboard side tackle center w/ prep top
- Full enclosure
- Helm Air conditioning w/ thermostat controls
- Non-skid decking throughout
- Engine room access hatch in sole
- Overhead courtesy lighting throughout
- Acrylic salon door starboard and forward

Helm

- Electric head
- Corian stone vanity top
- Ceramic in-counter bowl sink w/ faucet
- Mirror finished medicine cabinet
- Under-vanity cabinet storage
- Sky light hatch for ventilation
- Large stand-alone shower
- Molded in courtesy lighting overhead

Head

- Electric head
- Corian stone vanity top
- Ceramic in-counter bowl sink w/ faucet



- Mirror finished medicine cabinet
- Under-vanity cabinet storage
- Sky light hatch for ventilation
- Large stand-alone shower
- Molded in courtesy lighting overhead

Forward V Berth

- Overhead hatch to foredeck
- Courtesy reading lamps
- Rod storage racks to starboard
- Cedar lined hanging locker
- Under-berth drawer storage
- Saltwater washdown hook up
- Freshwater washdown hookup
- 50 amp shore cord coupled to glendining cablemaster
- Cockpit spreader lights



38 Rampage Express Whistle in the Sky- Profile 2007 Rampage Express 38 Whistle in the Sky



38 Rampage Express Whistle in the Sky- Cockpit 2007 Rampage Express 38 Whistle in the Sky



38 Rampage Express Whistle in the Sky- Cockpit 2007 Rampage Express 38 Whistle in the Sky



38 Rampage Express Whistle in the Sky- Cockpit 2007 Rampage Express 38 Whistle in the Sky



38 Rampage Express Whistle in the Sky- Helm 2007 Rampage Express 38 Whistle in the Sky



38 Rampage Express Whistle in the Sky- Helm 2007 Rampage Express 38 Whistle in the Sky



38 Rampage Express Whistle in the Sky- Helm 2007 Rampage Express 38 Whistle in the Sky



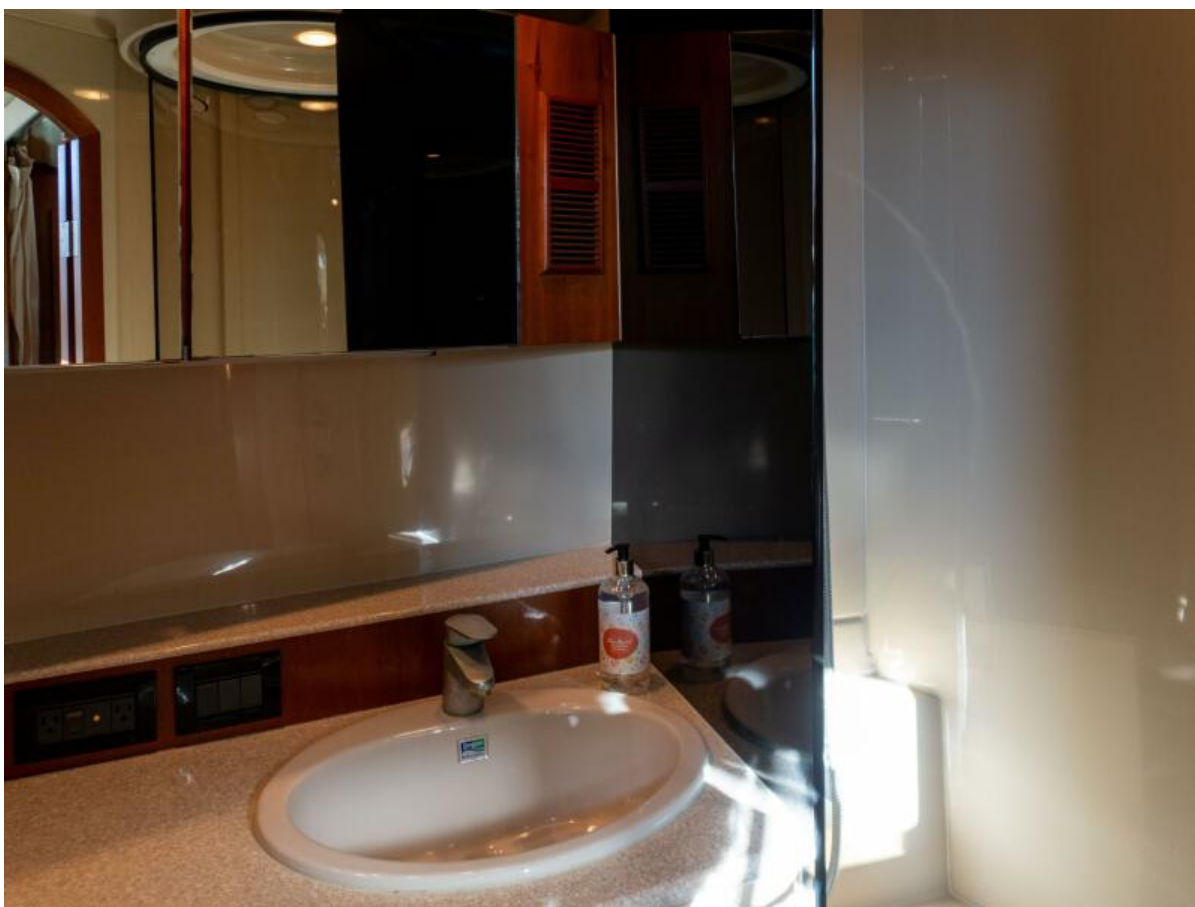
38 Rampage Express Whistle in the Sky- Dinette 2007 Rampage Express 38 Whistle in the Sky



38 Rampage Express Whistle in the Sky- Salon 2007 Rampage Express 38 Whistle in the Sky



38 Rampage Express Whistle in the Sky- Cabin 2007 Rampage Express 38 Whistle in the Sky



38 Rampage Express Whistle in the Sky- Head 2007 Rampage Express 38 Whistle in the Sky



38 Rampage Express Whistle in the Sky- Head 2007 Rampage Express 38 Whistle in the Sky



38 Rampage Express Whistle in the Sky- Galley 2007 Rampage Express 38 Whistle in the Sky



38 Rampage Express Whistle in the Sky- Galley 2007 Rampage Express 38 Whistle in the Sky



38 Rampage Express Whistle in the Sky- Features 2007 Rampage Express 38 Whistle in the Sky



38 Rampage Express Whistle in the Sky- Profile 2007 Rampage Express 38 Whistle in the Sky