



DARK SIDE

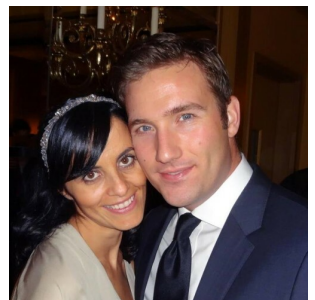
36' (10.97m) 2002 American Tug 34
Sturgeon Bay Wisconsin United States



OVERVIEW

Manufacturer:	<i>American Tug</i>		
Engines:	1 Cummins	Hull Material:	Fiberglass
Engine Model:	6BTA 5.9L	Cruise Speed:	8 Knots
Engine HP:	370	Max Speed:	16 Knots
Beam:	13' 3"	Cabins/Heads:	1 / 1
Max Draft:	3' 6"	Fuel Type:	Diesel
Water:	145 G (548.88 L)	Fuel:	400 G (1514.16 L)

\$295,900



Michael Schwartz michael@schwartzco.net

(312) 533-9111

Data Sheet

Category: Tug
Subcategory: Trawlers
Condition: Used
Model Year: 2002
Beam: 13'3" (4.04m)
Max Draft: 3' 6" (1.07m)
LOA: 36' (10.97m)
Cabins: 1
Sleeps: 4
Convertibles: 1
Heads: 1

Maximum Speed: 16 Knots
Cruise Speed: 8 Knots
Range NM: 1000
Fuel Type: Diesel
Hull Material: Fiberglass
Air Conditioning: Yes

Dry Weight: 20000 lbs
Bow Thruster: Yes
Fuel Tank: 400 gal (1514.16 liters)
Fresh Water: 145 gal (548.88 liters)
Holding Tank: 45 gal (170.34 liters)
Imported: No
HIN/IMO: TQG34025L102

Engines/Generators

Engine 1

Cummins
6BTA 5.9L
Inboard
370HP
275.91KW
Fuel: Diesel
Hours: 2054
Year: 2002
Location: Middle

Generator 1

Onan
5.0 KW
5KW

Summary/Description

Immaculate American Tug 34 recently off the Great Loop. This boat has been very well maintained her whole life and is cruise-ready. If the Great Loop or extended Great Lakes cruising is in your plans, this vessel is for you!!!

Dark Side is a 2002 American Tug 34 built in LaConner, Washington by the Tomco Marine Group (now owned by The Kadey-Krogen Group). This comfortable trawler debuted in 2001 to critical acclaim. She is described by the Powerboat Guide as a sought-after coastal cruiser loaded with practical features. The previous owners of Dark Side completed America's Great Loop in 2023. She is very well maintained, and is truly turn-key and cruise-ready. She has a full efficient single-engine and cruises comfortably at 7.5 knots @ 1500 RPM, while burning 2.5 GPH, with a cruising range of approximately 1000 nautical miles.

If the Great Loop, cruising the ICW, Great Lakes, or the Bahamas is in your future boating plans, this is the vessel for you!

Salon / Galley

The main salon is accessed from the rear cockpit through the heavy duty door amidships. The cabin is light and airy and large windows provide panoramic view and plenty of natural light and ventilation. To port there is a luxurious, L-shaped, Ultra-Leather sofa which converts to a double berth and a beautiful teak up/down table. The full galley is to starboard and features elegant solid surface countertops with 2 large basins aft, a stainless steel three burner stove with oven center and microwave and ac/dc refrigerator/freezer forward. There is plenty of storage in beautiful wooden cabinets and lockers.

Pilothouse

The pilothouse is forward up three steps from the Salon. Large windows provide excellent visibility. There is a large comfortable bench to port and another adjustable bench at the helm to starboard. The helm is well designed with full engine controls, gauges, electronics displays and a large wheel. Heavy duty doors to port and starboard open full to improve visibility and access to side and foredecks and large mid cleat.

Forward Cabin / Master Suite

The Master cabin is forward and features a large double walkaround berth with cabinetry on each side of the berth and large hanging lockers aft of those. There is a separate entrance to the head. 2 opening ports and over head hatch provide natural light and ventilation. Reading lights, ceiling lights and courtesy lights. Great storage.

Head

The head is down three steps from pilot house just before the forward cabin on the starboard side. There is a LARGE full-size shower, a Vacuu-Flush toilet and solid surface counter with small basin above teak cabinetry. The holding tank is located in its own compartment below the head sole. Good storage. Maple & sapele wood floor.

Hull / Decks

On the foredeck there is an oversized Bruce anchor with a powerful Loufrans 1200 watt windless. She has a nice plumb

bow with a long waterline that allows for greater speed than other tugs/tractors of her size. She has high bow rails for security on deck. She has plenty of storage and room for a couple lounge chairs in the rear cockpit area. The large sundeck on roof is accessed by rear cockpit ladder and provides ample room for patio furniture, lounge chairs, storage, paddleboard/kayak racks, Starlink and/or solar panels.

Mechanical

Cummins 6BTA

Hydraulic Steering

Side Power Bow Thruster 6HP

Fire Suppression System

Raw Water Strainers- Engine, Gen, AC

Dual Racor Fuel Filters

11 Gallon Water Heater- Stainless Steel

Bilge Pumps- 3

Under Water Exhaust

Overboard Discharge System- Macerator

Raw Water Pump- Washdown

Engine Room Ladders - Port & Starboard access from pilot house

Electrical

Onan 5.0 KW Generator

30amp shore power cords- 4

12 Volt Electrical System

110 Volt Electrical System

Distribution Panel in pilot house

Battery Switches

Battery Charger

Back up Battery Charger

Mechanical Disclaimer

Engine and generator hours are as of the date of the original listing and are a representation of what the listing broker is told by the owner and/or actual reading of the engine hour meters. The broker cannot guarantee the true hours. It is the responsibility of the purchaser and/or his agent to verify engine hours, warranties implied or otherwise and major overhauls as well as all other representations noted on the listing brochure.

Disclaimer

The company offers the details of this vessel in good faith but cannot guarantee or warrant the accuracy of this information nor warrant the condition of the vessel. A buyer should instruct his agents, or his surveyors, to investigate such details as the buyer desires validated. This vessel is offered subject to prior sale, price change or withdrawal without notice.



2002 American Tug 34





























