



Tiger Woman

42' (12.80m) 1995 Ocean Alexander 420 Sedan Bridge
New Bern North Carolina United States



OVERVIEW

Manufacturer: *Ocean Alexander*

Engines:	2 Caterpillar	Hull Material:	FRP
Engine Model:	3208	Cruise Speed:	Knots
Engine HP:	375	Max Speed:	Knots
Beam:	14' 4"	Cabins/Heads:	2 / 1
Max Draft:	3' 3"	Fuel Type:	Diesel
Water:	150 G (567.81 L)	Fuel:	600 G (2271.25 L)

\$160,000



Capt. Al Lang al@sjyachts.com

1-252-864-9111

Data Sheet

Category: Flybridge
Subcategory: Sport Fishing
Condition: Used
Model Year: 1995
Beam: 14'4" (4.37m)
Max Draft: 3' 3" (0.99m)
LOA: 42' (12.80m)
Cabins: 2
Sleeps: 4
Single Berths: 2
King Berths: 1
Heads: 1

Knots
Knots
Fuel Type: Diesel
Hull Material: FRP
Air Conditioning: Yes

Displacement: 33100 lbs
Fuel Tank: 600 gal (2271.25 liters)
Fresh Water: 150 gal (567.81 liters)
Imported: No
Builder: Ocean Alexander
Designer: Ed Monk
HIN/IMO: NDY42204G495
In Stock: Yes

Engines/Generators

Engine 1

Caterpillar
3208
Inboard
375HP
279.64KW
Fuel: Diesel
Hours: 1203
Hours Date: 02-01-2024
Location: Starboard

Engine 2

Caterpillar
3208
Inboard
375HP
279.64KW
Fuel: Diesel
Hours: 1209
Hours Date: 02-01-2024
Location: Port

Generator 1

Onan
Cummins
8KW
Hours: 1455
Hours Date: 02/01/2024

Summary/Description

The Ocean Alexander 420 Sedan Bridge yacht is a stylish Ed Monk design with exceptional performance, construction quality, and accommodations. A perfect combination of sport fishing and power cruiser accommodations. This comfortable, well cared for two owner yacht has only 1200 hrs on twin Cat 3208s

The **Ocean Alexander 420 Sedan Bridge yacht** is a luxurious Ed Monk design that boasts exceptional performance, construction quality, and accommodations. This yacht was crafted by highly skilled artisans in Taiwan, who have a continuing reputation for producing top-quality vessels. This well cared for two owner yacht has only 1200 original hours on twin Caterpillar 3208 diesels and a unique hinged electronics mast to reduce vessel height.

The yacht's **accommodations** are designed to provide maximum comfort and luxury - perfect for entertaining family and friends. Captain and guests can enjoy the large enclosed bridge, or open the enclosure for a fully open environment. On the main deck this yacht features a master and guest cabins, head/shower, and spacious salon that comfortably accommodates six or more. The living areas are well-appointed with beautiful cabinetry, comfortable beds, ample storage space, and large windows that offer breathtaking views of the ocean.

When it comes to **performance**, the Ocean Alexander 420 is a masterpiece. Powered by twin Caterpillar 3208 diesels, this yacht's modified semi-displacement/planing hull ensures superior performance, great fuel economy, and a very comfortable ride.

Construction quality is second to none with a hull made of hand-laid fiberglass constructed by expert artisans using only the finest materials available. Interior wood joints are glued and secured by screws, and the salon teak and holly decks have a clean yacht look. This yacht is a luxurious vessel that offers exceptional performance, construction quality, and accommodations. It is a perfect choice for anyone looking for a yacht that will provide an unforgettable cruising lifestyle afloat.

Accommodations and Interior

- High quality teak paneling and cabinetry
- Satin varnish interior finish
- Teak and holly salon/galley deck
- Cedar lined hanging lockers with interior lighting
- Brass & stainless steel hardware throughout

Salon

- Raised leather seat dinette with glass table, drawer and under seat storage
- Comfortable leather settee with cushions, coffee table and end table
- Entertainment center with TV/sound system locker
- Three built in storage cabinets
- Strategically located overhead spot lighting

- Sliding glass sun deck door to aft cockpit
- Draperies and blinds
- Backup whale bilge pump behind cabinet access panel

Master Stateroom

- Large center king berth
- Cedar lined hanging locker w/automatic interior lighting
- 11 custom built-in drawers
- Built-in counter sink
- Four stainless steel oval port lights
- Overhead halogen spot lighting and berth reading lights
- Skylight hatch with screen
- Outlets and connection jack for cable TV
- Mirrors

Guest Stateroom

- Two single berths
- Cedar lined hanging locker w/automatic interior lighting
- 11 custom built in drawers/locker
- Overhead halogen spot lighting
- Two Trainable berth reading lights
- Two oval stainless steel port lights

Head

- Faux granite walls and ceiling with varnished teak trim
- Spacious stand-up shower
- Molded countertop & sink
- Medicine/cabinet storage with mirror door
- Two stainless steel oval port lights
- VacuFlush head
- Overhead spot lighting
- GFI 110V AC outlet

Galley

- Teak cabinetry with built in storage
- Two cabinets, hidden plate/dish storage next to sink, utensil drawer
- Pull out cutting board/workstation
- Empress electric cooktop and oven
- Microwave/convection oven
- Generous size sink w/pull out faucet
- Galley exhaust blower
- Galley perimeter floor lighting
- Isotherm refrigerator with ice section
- Overhead lockers w/halogen lights under
- GFI 110V AC outlet

Propulsion and Electrical

- Twin Caterpillar 3208TA naturally aspirated diesel engines
- Dec 2023 Major service Oil/filters, fuel filters, coolant, raw water impellers
- Onan Generator 8 Kw
- AC & DC service panels/breakers
- Pro Mariner 80 amp battery charger
- Heart Interface Link 20 battery monitor
- Two Dometic Cruiseair 10,000 BTU AC/Heat pumps
- Two 30 amp shore power cables
- Torio 20 gal hot water heater
- Includes two factory installed fuel saddle tanks of 50 gal each
- Spare filters/parts

Deck Features

- Flybridge helm controls
- Flybridge 'L' shaped bench seats with storage under
- Flybridge swiveling captain's chairs (2) with varnished footrests
- Aft cockpit engine control station
- Brower Systems 800lb capacity tender davit on bow
- Nine fishing rod holders aft of flybridge
- Outrigger port/stbd mounting bases on flybridge
- Maxwell electric windlass with chain/braided rode and Fortress FX23 anchor
- Aft cockpit h/c shower and water washdown faucet
- Air horn
- Dock lines and fenders
- Avon Rover 315 tender/15 hp 2007 Yamaha does not convey with vessel

Mechanical Disclaimer

Engine and generator hours are as of the date of the original listing and are a representation of what the listing broker is told by the owner and/or actual reading of the engine hour meters. The broker cannot guarantee the true hours. It is the responsibility of the purchaser and/or his agent to verify engine hours, warranties implied or otherwise and major overhauls as well as all other representations noted on the listing brochure.

Electronics

- Raymarine E80 Chartplotter
- Standard Horizon VHF, Matrix GX2000 with GPS
- Raytheon V850 color echo sounder
- Raymarine R11 raster scan radar (inoperative)
- Robertson Autopilot

Disclaimer

The company offers the details of this vessel in good faith but cannot guarantee or warrant the accuracy of this information nor warrant the condition of the vessel. A buyer should instruct his agents, or his surveyors, to investigate such details as the buyer desires validated. This vessel is offered subject to prior sale, price change or withdrawal without notice.



DSC_0714



DSC_0721



DSC_0720





Salon



Settee



Dinette



Galley Area



Galley Detail



Oven_Stove



Galley Storage



Cutting Board Workspace



Ice Box



Master_



Master Cabin



Master Storage



Master Storage_



Guest Cabiin



Head Shower



Shower



Engine Hrs



Flybridge Controls



Flybridge Lounge Area



Helm Station



Flybridge Lounge Facing Aft



Aft Cockpit Controls



Port Side



Port Side Flybridge



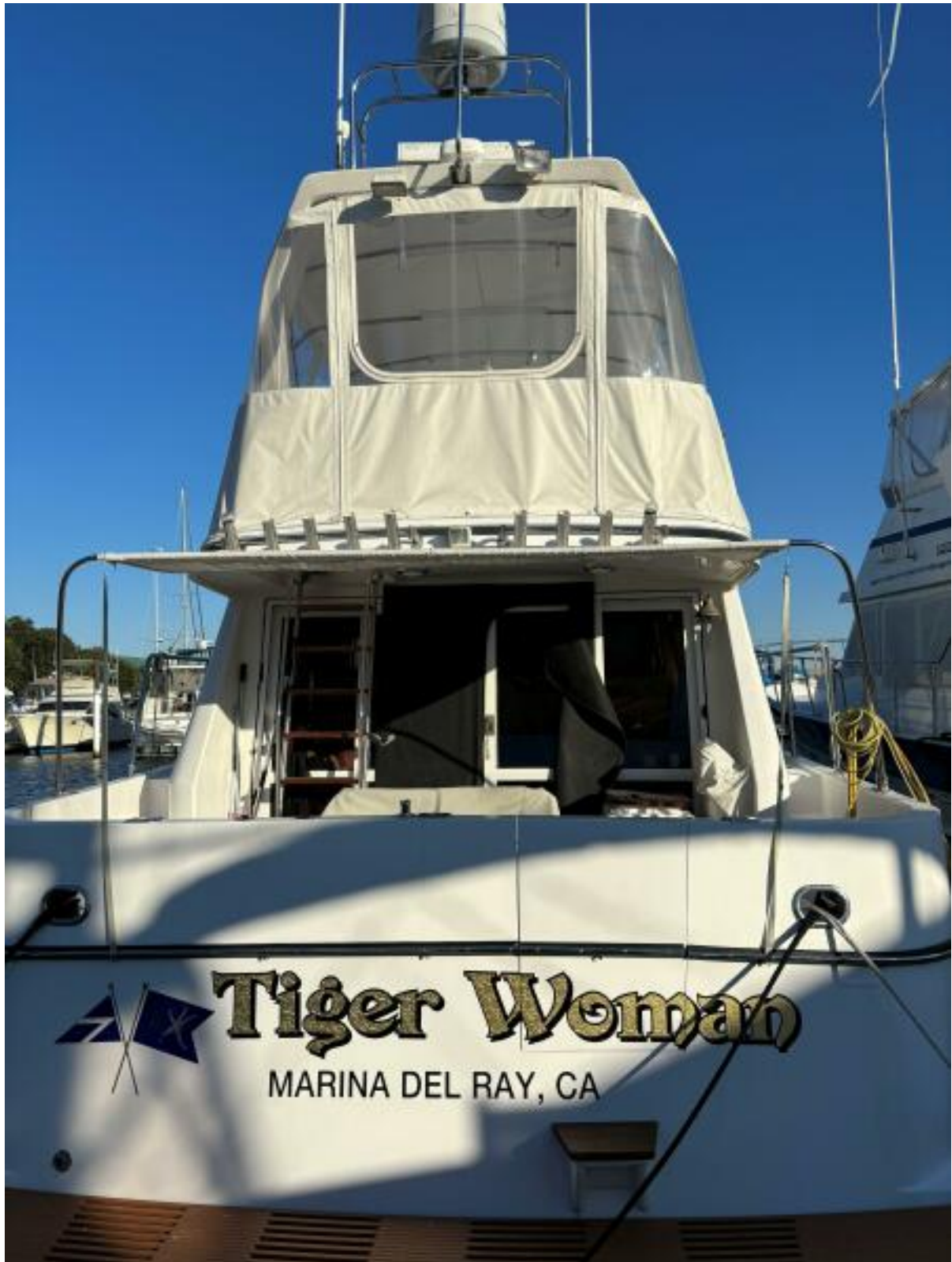
Port Bow



Port Bow Davit



Flybridge



Stern And Flybridge



Stbd Bow Tender



Stbd Walkway



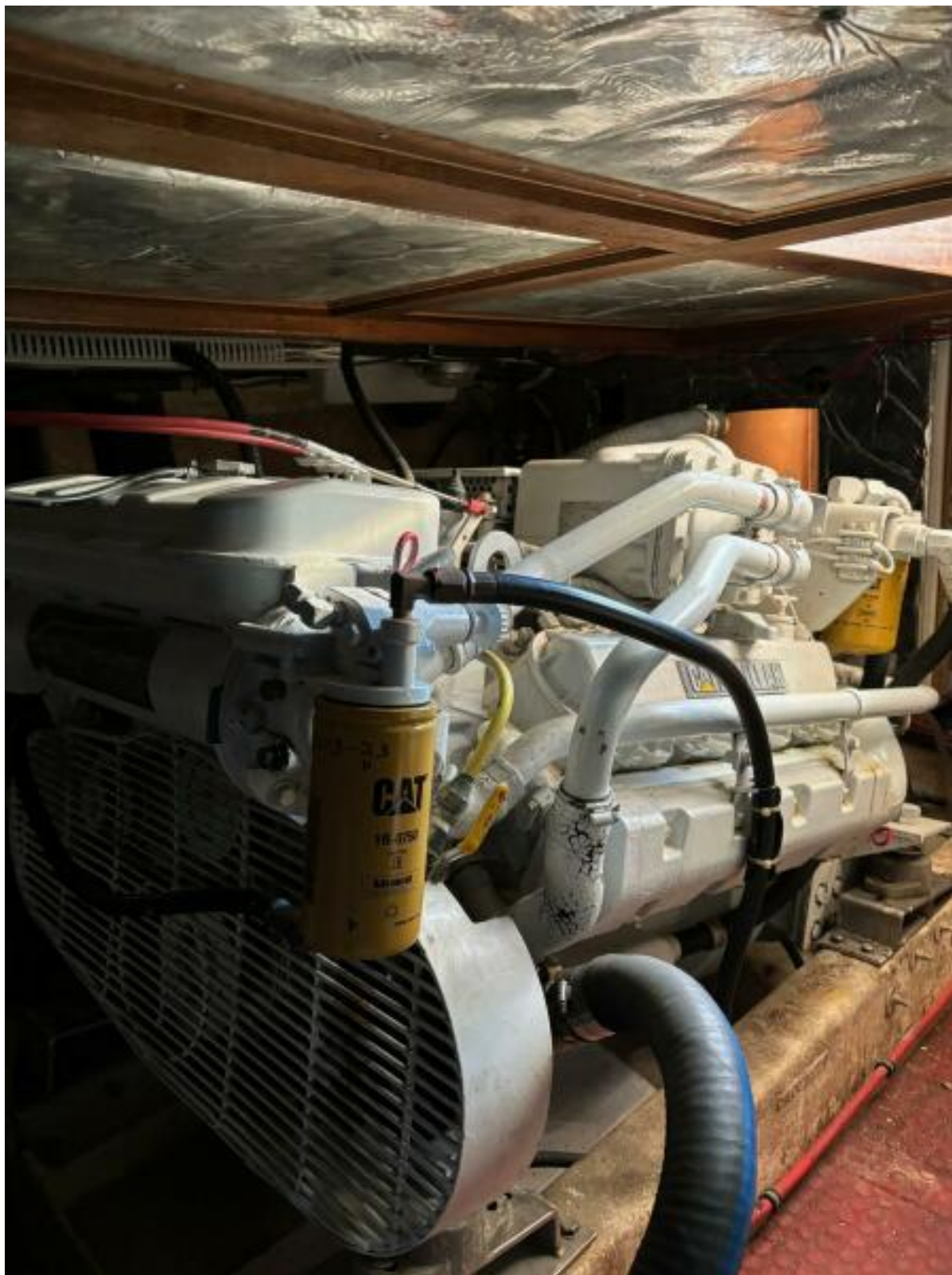
DSC_0703



DSC_0717



Stbd End Aft



Stbd Eng Fwd



Port Eng Aft



Port Eng Fwd



Onan Generator