



SANDMAN

31' (9.45m) 2007 Sea Ray 290
Rock Hall Maryland United States



OVERVIEW

\$64,500

| | | | |
|---------------|-----------------|----------------|------------------|
| Manufacturer: | Sea Ray | Hull Material: | Fiberglass |
| Engines: | 2 Mercruiser | Cruise Speed: | |
| Engine Model: | 5.0 | Max Speed: | |
| Engine HP: | 260 | Cabins/Heads: | / 1 |
| Beam: | 9' 6" | Fuel Type: | Gas/Petrol |
| Max Draft: | 3' 3" | Fuel: | 125 G (473.18 L) |
| Water: | 28 G (105.99 L) | | |



Data Sheet

Category: Sports Cruiser
Condition: Used
Model Year: 2007
Beam: 9'6" (2.90m)
Max Draft: 3' 3" (0.99m)
Min Draft: 2' 4" (0.71m)
LOA: 31' 1" (9.47m)
V Berths: 1
Double Berths: 1
Heads: 1

Fuel Type: Gas/Petrol
Hull Material: Fiberglass
Hull Shape: Deep Vee
Hull Finish: Gel Coat
Air Conditioning: Yes
Bridge Clearance: 8' 11"

Dry Weight: 9250 lbs
Fuel Tank: 125 gal (473.18 liters)
Fresh Water: 28 gal (105.99 liters)
Holding Tank: 28 gal (105.99 liters)
Builder: Sea Ray
HIN/IMO: SERT94021607

Engines/Generators

Engine 1

Mercruiser
5.0
Inboard/Outboard
260HP
193.88KW
Fuel: Gas/Petrol
Hours: 533
Hours Date: 11-01-2023
Year: 2007
Location: Port

Engine 2

Mercruiser
5.0
Inboard/Outboard
260HP
193.88KW
Fuel: Gas/Petrol
Hours: 535
Hours Date: 11-01-2023
Year: 2007
Location: Starboard

Summary/Description

Extremely Clean and Ready to Go The Sea Ray 290 Sundancer with her sporty appearance has become an extremely successful model. Combining her looks with the practicality of her size, accommodations and a good performing deep-V hull has made her a hit in the mid-size boat market.

The Sea Ray 290 is a very popular model due to a combination of size, good handling deep-V hull with substantial freeboard forward and extensive accommodations both above and below deck. With twin Mercruisers and Bravo-III out drives. providing adequate power for a comfortable cruise speed. This boat has been very well cared for and extremely clean. Boat has just been hauled, fresh hull wax, winterized and cleaned through-out.

She is ready to go for next season.

NEWLY REPLACED or UPGRADED

- **NEW November 2023 Hull Waxed**
- **NEW 2023 Water Heater**
- **NEW 2022 Starboard Outdrive (Brava III)**
- **NEW 2020 Connecting Panel (Clear Vinyl)**

HULL and DECK

- **Deep V Hull**
- **Deck Molded in Limit Slip Surface**
- **Arch**
- **Foredeck Anchor Locker**
- **Gel Coat Finish Thru-out (White)**
- **Swim Platform (Molded In With Hull)**
- **Raised Full Perimeter Rub Rail**
- **Stainless Steel Bow Rail**
- **Center Opening Windshield for Easy Bow Access**
- **Swim Platform Locker**
- **Transom Door (Access from Swim Platform to Cockpit)**
- **Swim Ladder (Stainless Steel) (Mounted below Swim Platform for Easy Access from Water)**
- **Mooring Cleats (6)**
- **Anchor Roller (Stainless Steel)**
- **Spot Light (Remote, Bow Mounted)**
- **Windlass with Foot Switches on Bow)**

COCKPIT

- **Bench Seat at Stern (Storage in Seat)**
- **Bench Seat on Port Side (Storage in Seat)**
- **Helm Seat (Double Bench with Flip up Bolster for Standing)**
- **Wet Bar on Port Side with Storage and Corian Counter Top)**
- **Sink (Stainless Steel)**

- Refrigerator
- Teak Table (Removeable at Stern Seat)
- Recessed Lighting
- Stereo Speakers
- Engine Access Hatch (Electric Operated)
- Cockpit Shower (Hot and Cold at Transom Door)
- Companionway Doors (Lockable Solid and Separate Screen Door)
- Flip Down Step (Next to Helm for Bow Access)

CANVAS

- Full Slope Back Enclosure (Black Sunbrella with Large Vinyl Window)
- Interconnecting Panel/ Windshield Connector (NEW 2020) (Black Sunbrella with Vinyl Windows)

HELM CONTROLS and INSTRUMENTS

- Double Bench Seat with Flip Up Bolster (To Use In Standing Position)
- Wheel (Half Wood / Half Black Vinyl)
- Full Analog Engine Instruments (Each Engine Has Individual Set)
- Analog Fuel Gauge
- Spot Light Controls (Guest, Spot and Flood)
- Dual Engine Controls (Mercury)
- Trim Tab Controls
- Chartplotter (Simrad)
- VHF (Simrad w/ Speaker on Dash)
- Stereo Remote (Clarion)
- Compass (Ritchie)
- Windshield Wiper Switches
- Anchor Windlass Controls
- Bilge Blower, Lights and Engine Hatch Lift Switches

SALON

- Settee with Storage Beneath (Port Side) (White Ultra-Leather)
- Cabinets for Storage (Forward and Aft of Settee)
- Electric Panel (Located in Cabinet Next to Settee)
- Stereo (Located in Cabinet Next to Settee (Fusion MS-RA70NSX)
- Low End Table with Storage Beneath (Aft of Settee)
- Table (Removable)
- TV mounted Starboard Side (Toshiba)
- Storage Cabinet (Starboard with Controls for Antenna and DVD Player KEC)
- ALL INTERIOR CABINETS are Cherry with High Gloss Finish
- Interior Floor is Fully Carpeted with Snap on Canvas Protection Cover (Off White)

GALLEY

- Located on Starboard Side
- Under Counter Refrigerator / Freezer
- Sink (Single Stainless Steel)
- Stove (Single Burner KENYON Glass Top) (Recessed with Cover)
- Counter Top (Corian, Beige Fleck)
- Microwave (Sylvania, Built In)

- Hot and Cold Pressure Water
- Air Conditioning Controls
- Storage Above and Below Counter

FORWARD CABIN

- V-Berth (Large with Memory Foam Type Topper)
- Curtain on Track (Close Off from Salon)
- Storage Cabinets Beneath Berth
- Overhead Opening Hatch
- Storage Cabinets Port and Starboard of Berth with Sliding Doors
- Padded Bolsters Port and Starboard of Berth at Berth Lever
- Large Mirror at Forward End of Berth
- Reading Lights

AFT CABIN

- Berth (Double)
- Memory Foam Like Topper
- Lights (Reading)
- Mirror (Aft End)

HEAD

- Toilet (Sealand Dometic Vacu-Flush)
- Sink (Stainless Steel Oval)
- Hot & Cold Water with Pull Out Shower Head
- Opening Port (Stainless Steel)
- Storage Above and Below Counter
- Counter Top (Corian Beige Fleck)
- Molded Fiberglass Shower Pan

ELECTRICAL

120 Volt

- Shore Power Inlet 30Amp
- Shore Power Cord (30Amp by 50')
- Switch Panel with Power and Reverse Polarity Lights
- Air Conditioning
- Water Heater (NEW 2023)
- Microwave (Sylvania)
- Stove (Single Burner Kenyon Glass Top)
- Battery Charger
- Receptacles

12Volt

- Main Disconnect Battery Panel
- Main Switch Panel

- **Running Lights**
- **Cockpit and Interior Lights**
- **Electronics**
- **Instrument Panels**
- **12 Outlets**
- **Stereo**
- **TV**
- **DVD Player**
- **Vacu-Flush Head System**
- **Fresh Water Pump**
- **Bilge Pumps (2)**
- **Sump Box Pump (Shower Water, Sink Water & Air Conditioning Condensate)**
- **Lift Pump for Engine Hatch**
- **Refrigerators (2)**
- **Windlass**

Disclaimer

The company offers the details of this vessel in good faith but cannot guarantee or warrant the accuracy of this information nor warrant the condition of the vessel. A buyer should instruct his agents, or his surveyors, to investigate such details as the buyer desires validated. This vessel is offered subject to prior sale, price change or withdrawal without notice.

Mechanical Disclaimer

Engine hours are as of the date of the original listing and are a representation of what the listing broker is told by the owner and/or actual reading of the engine hour meters. The broker cannot guarantee the true hours. It is the responsibility of the purchaser and/or his agent to verify engine hours, there are no warranties implied or otherwise and major overhauls as well as all other representations noted on the listing brochure.





Cockpit aft







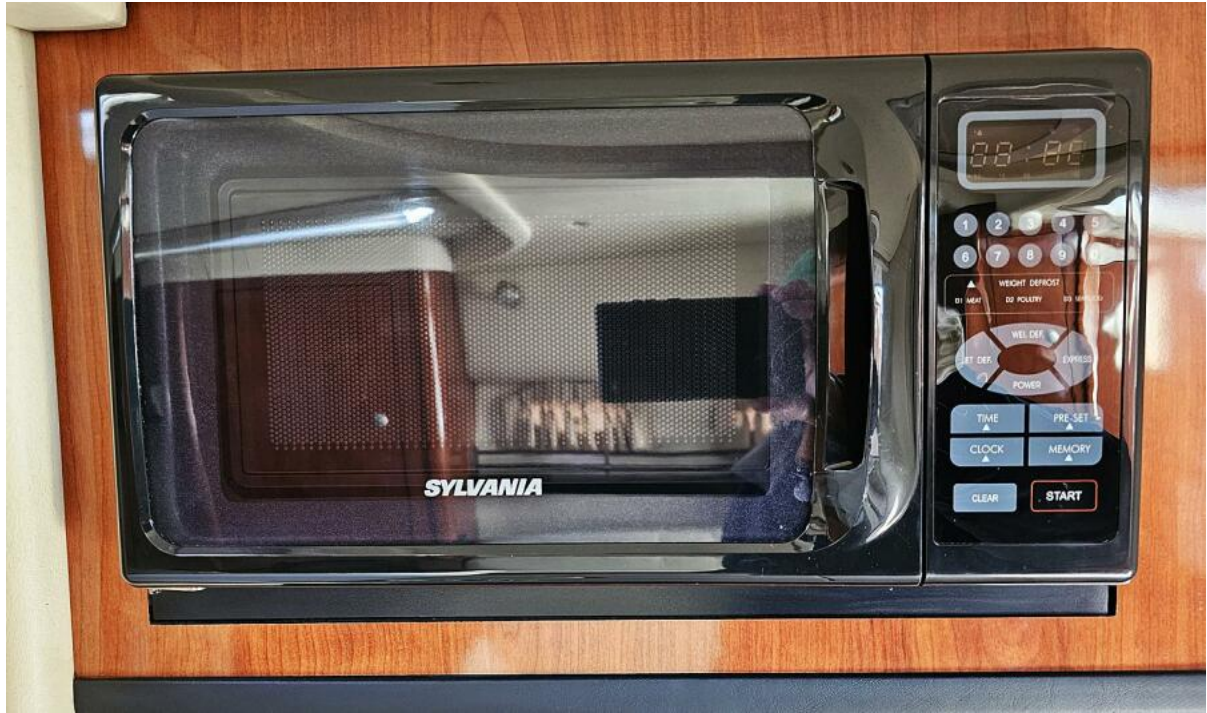
























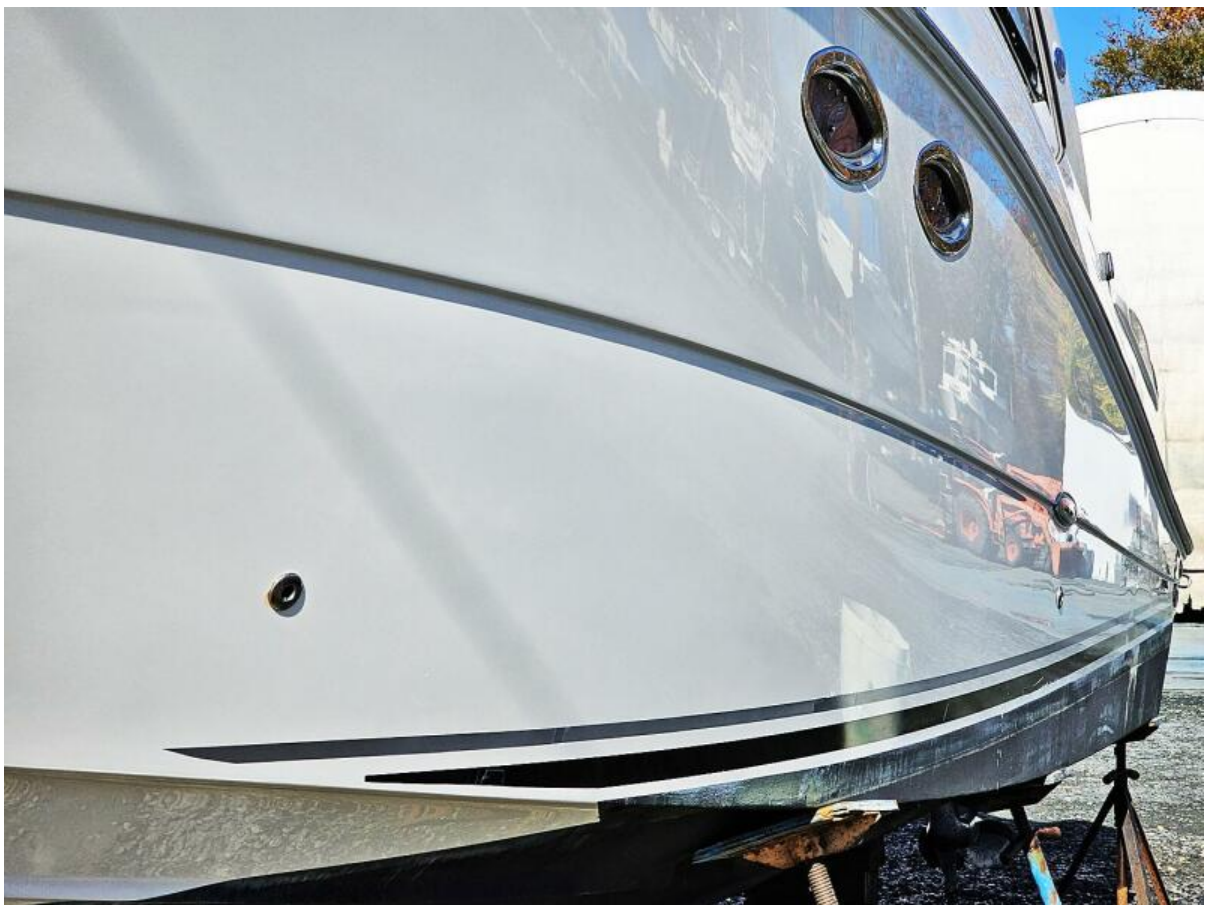
Freshly Waxed



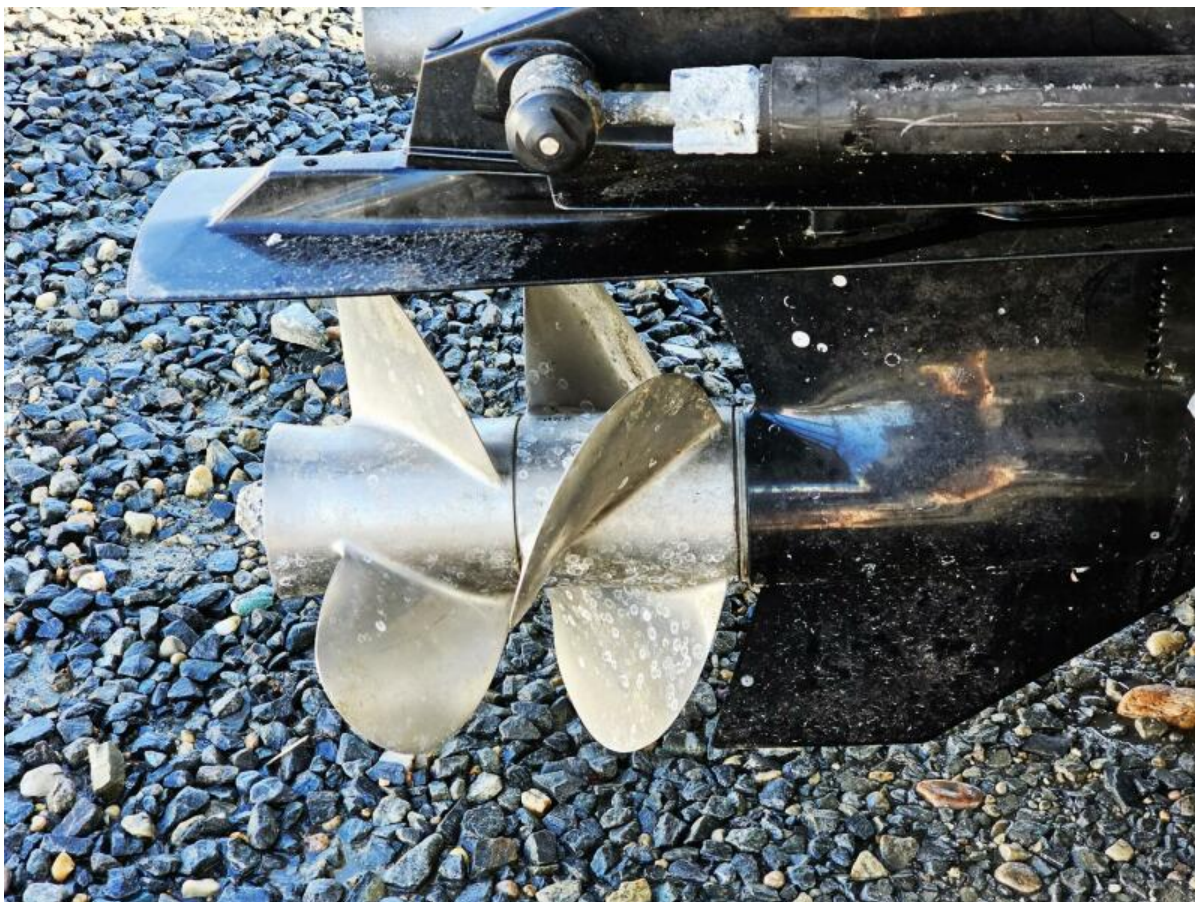
Freshly Waxed



Stbd Fresh Wax



Port Fresh Wax



Props







