



PACIFIC PROVIDER

157' (47.85m) 1978 Blount Marine Expedition
Golfito Costa Rica

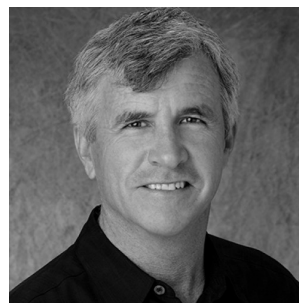


OVERVIEW

Manufacturer: *Blount Marine*

Engines:	2 Detroit Diesel	Hull Material:	Steel
Engine Model:	12V149	Cruise Speed:	9 Knots
Engine HP:	650	Max Speed:	11 Knots
Beam:	35' 0"	Cabins/Heads: /	11
Max Draft:	10' 0"	Fuel Type:	Diesel
Water:	7000 G (26497.87 L)	Fuel:	91000 G (344472.31 L)

\$2,500,000



FRASER

Data Sheet

Category: Expedition Yacht
Condition: Used
Model Year: 1978
Refit Year: 2020
Beam: 35' (10.67m)
Max Draft: 10' (3.05m)
LOA: 157' (47.85m)
Sleeps: 12
Heads: 11

Crew Sleeps: 14
Maximum Speed: 11 Knots
Cruise Speed: 9 Knots
Range NM: 120000
Fuel Type: Diesel
Super Structure Material: Steel
Hull Material: Steel
Air Conditioning: Yes

Gross Tonnage: 284
Bow Thruster: Yes
Stern Thruster: Yes
Fuel Tank: 91000 gal (344472.31 liters)
Fresh Water: 7000 gal (26497.87 liters)
Builder: Blount Marine
Designer: Boris Krilloff
HIN/IMO: 7728637

Engines/Generators

Engine 1

Detroit Diesel
12V149
Inboard
650HP
484.71KW
Fuel: Diesel
Hours: 4763
Location: Port

Engine 2

Detroit Diesel
12V149
Inboard
650HP
484.71KW
Fuel: Diesel
Hours: 4747

Generator 1

CAT
3306

FRASER

Summary/Description

Converted in 2008 from an offshore supply vessel to a globetrotting expedition yacht capable of being a mothership carrying sport fishers and other water toys. Complete with a massive crane and large roll in garage. There is a machine shop for repairs and servicing equipment. Heavily built and capab

The 2008 retrofit transformed the Lloyds certified 1978 offshore supply vessel into the Pacific Provider expedition yacht by adding a superstructure to include: guest staterooms, additional crew quarters, restaurant sized galley, lounge, dining room, indoor and outdoor bar areas and sun deck. This retrofit was supervised by Stan Antrim, founder of Shadow Marine and Yacht Escort Ships. Boris Krilloff and Associates served as Naval Architect ensuring a high-quality build and design for long term performance. The work was done at the Stabbert Maritime shipyard in Seattle.

This vessel is designed to provide guests all the comforts of home and transport them safely offshore, providing new places and experiences with nearly any limitations. With a 91,000-gallon fuel capacity, the Pacific Provider can reach further than most ships of its kind and stay there for extended periods of time. Her 12,000-mile range can make the most remote atoll or island easily accessible.

With a capacity to make 7,000 gallons of fresh water a day, 4 ice makers, and power to support several game boats and watercraft, the Pacific Provider can do it all. Her tough commercial exterior can withstand the rigors of hurricane force winds, driving rain, or blistering heat without damage to materials used on a typical "megayacht." Her interior accommodations for 12 guests plus up to 12 crew are luxurious, special and provide a feeling of being at home while miles offshore.

With little preparation needed, PACIFIC PROVIDER stands ready to head out on an adventure.

FULL SPECIFICATIONS

COMMENTS AND NOTEWORTHY FEATURES AT A GLANCE

12,0000 nm range

17-ton telescoping crane booms out to 51 feet.

A large garage is located forward of the deck with a large roller door giving excellent access.

Massive work / boat deck measures approximately 45' long by 35' wide.

CLASSIFICATION

FRASER

Flag: USA

Port of Registry: Iredell, Tx

EU Tax Status: VAT not paid

US Tax Status: US Goods

IMO Number: 7728637

Official Registration: USCG 597967

Home Port: Iredell, Tx

ACCOMMODATIONS

OVERVIEW:

PACIFIC PROVIDER is a multi-purpose vessel that can be operated as a family expedition vessel, charter business, support vessel for a superyacht owner, a mothership to support a fleet of sportfishing boats or as a research vessel. She is capable of world exploration in rugged offshore waters.

ACCOMMODATIONS:

There are 6 equal staterooms for guests refurbished in 2017.

Each stateroom includes:

Private en-suite bathroom with shower

Twin or King bed flexible configuration

Flat screen TV and stereo

Large Armoire

Natural wood nightstand and dresser

Large picture windows (1/2" tempered glass)

Individual room-controlled A/C and heat

Nautical themed artwork

Ensuite Heads with sink, mirror, stall shower and toilet

FRASER

CREW ACCOMMODATIONS:

Captain and Chef's cabins located immediately below the wheelhouse and forward of the galley, each includes:

Double berth

Hanging locker

Desk

Entertainment system

Shared head and shower

2- crew cabins at forward main deck, sleep 2 each

1- crew cabin at forward lower deck, sleeps 4

Engineer's cabin forward lower deck, sleeps 2

CREW MESS

Forward at main deck

Double sink

Dishwasher

Microwave

Refrigerator

Settee

Samsung TV

Exercise room at lower deck, aft, with treadmill, free weights and heavy bag and gloves

LOUNGE & DINING:

At upper deck

Exceptionally large and comfortable with excellent views outside

Large picture windows (1/2" tempered glass)

4- Oversized chairs

2- Large natural wood dining tables – seats 12 total

Granite bar and back splash

Full bar, including two draft beer taps and Back Bar Refrigeration (true 3 door)

FRASER

Full complement of barware

4- Large leather sofas

5- Bar stools

Game table and chairs

Day head

Stairs to guest cabins at lower deck

65" Samsung HDTV

KVH satellite system

Yamaha RX-V1800 surround sound

GALLEY & LAUNDRY:

Located forward of the salon, huge commercial galley

4 ½' x 8' S/S Island with shelving below

2- Double S/S sinks

Viking commercial grade stove with double oven

2- Four-minute commercial grade dishwasher

Reach-in refrigeration (True 3 door)

Reach-in freezers (True 2 door)

3- Wine coolers

Extensive dry storage capacity

Spacious galley cabinetry

Commercial kitchen tools

2- Amanda microwave ovens

2- Ice makers (400lbs/day)

Extensive number of utensils, pots, pans, flatware

Large walk-in refrigerator and freezer (located on main deck below galley)

Three full sets of commercial laundry washers and dryers (located at lower deck)

OUTSIDE BAR:

Neal Esterly Neal.Esterly@FraserYachts.com

+1 619 823 9034

FRASER

Accessed directly from salon stairs from the upper and lower decks with view over aft deck

Full bar including draft beer tap

Reach-in refrigeration (True 2 door)

Overhead fans

5- Barstools

Ice maker

Wash sink

Granite wrap-around bar

Cushioned bench seating

SUN DECK:

Located aft of the wheelhouse, large open area for lounging and sunning.

7- Person hot tub

2- Dining tables

12- Person dining capacity

Triangular sail shade

6- Chaise lounge

4- Outdoor sofas

2- Coffee tables

4- Outdoor sofas

AFT DECK:

The work / boat deck of the Pacific Provider is designed for maximum function in a defined space. It measures 45 feet long by 35 feet wide. The 17-ton telescoping crane booms out to 51 feet. It is a work horse and can securely lift game boats and the ship's tenders onto and off the deck. The "garage" is located forward of the deck and has a large roller door giving excellent access. The garage holds everything from maintenance equipment to safety equipment, adventure gear and fishing & tackle supplies. Air-conditioned tackle center accessed from the garage. It also serves as a necessary staging point for the ship's maintenance. At the aft end of the work deck, across the transom are stairs to the large swim platform.

MACHINE SHOP:

FRASER

Unique to this size vessel, located below the garage adjacent to the engine room is a separate machine shop that includes, drills, presses, lathes, metal workbenches and other machinery to enable the maintenance and repairing of the ship's equipment. This area also has excellent storage for spare parts and tools.

ENGINE ROOM:

The engine room is exceptionally large. It is accessed via the garage above or the "tank tunnel" that has full head room and runs from the crew quarters the entire length of the boat to the engine room. Aft of the engine room is the generator room with electrical components for the ship's electrical system. Next aft is the steering room with access to the steering / rudders and other equipment.

ELECTRONICS:

- 1- Chart Plotter - Dell PC, 2.4 GHZ driving Nobletec software
- 1- Radar 1 - Furuno 1964 BB
- 1- Radar 2 - Furuno FR-8051
- 1- Sounder 1 - Furuno 1200 BB, 50/200 KHz
- 1- Sounder 2 - Furuno RD-30
- 1- Auto Pilot - Robertson AP-45
- 1- Compass 1 - Furuno SC-50 Satellite Gyro
- 1- Compass 2 - Dirigo 6" Magnetic
- 1- AIS - Furuno FA-150
- 1- Camera System - Elbex P/T/Z, Color - E-room and Aft Deck
- 2- GPS - 2 each, Furuno GP-32
- 1- Weather Station - Furuno PB100
- 1- Sea Temp - Furuno RD-30
- 4- Monitors - Dell 20" - 4
- 1- Hailer - Furuno LH-3000

Radios:

- 1- VHF ICOM 604
- 1- Two meter - ICOM IC-2200H
- 1- Air Band - ICOM IC-A210

FRASER

1- Sat Phone - KVH TracPhone V7 with 26" Dome (VSAT)

1- Sat TV - KVH M7 with 26" Dome

1- KVH M7 with 26" Dome

Office:

1- Dell PC, 2.4 GHZ with 20" Dell Screen

1- HP Color Copier / Fax

ENGINE AND MECHANICAL

MAIN ENGINE:

2- Detroit 12V149 naturally aspirated @ 650 hp, hours:

Port: 4763 Stbd: 4747

Engines replaced with new factory rebuilds December 2014

2- Transmissions, Twin Disc MG 527, 5.17:1

Port Gear New 2008 Starboard Gear New 2011

ELECTRICAL:

3- Phase 100-amp 480 VAC

AED 3 Phase 75Kva Isolation transformer

5- Eight-D batteries for starting

2- Eight-D batteries at wheelhouse for electronics

GENSETS:

CAT 33-06, 160 Kw

CAT 33-06, 160 Kw

AIR COMPRESSORS:

Quincy 325 with independent 150-gal pressure tank

WATER TREATMENT AND SANITATION SYSTEM:

Neal Esterly Neal.Esterly@FraserYachts.com

+1 619 823 9034

FRASER

1- Headhunter HMX MSD 2,000 gpd, black & grey water 40 person/day

10- Royal flush freshwater toilets

HOUSE WATER PUMPS:

2- EBARA Multistage EVMN56 pump 3 hp w/pressure regulator

3- Hot water heaters: A.O. Smith 40 Gal, 480V

1- Hot water circ pump, Grundfoss UP15-24, 1/25 hp

LUBE OIL TRANSFER PUMP:

Baldor 1.5 hp, 5 gpm

FUEL OIL TRANSFER PUMP:

1- Roper 22 gpm, 2hp Baldor

1- Goulds 300 gpm, 25 hp

1- 1.5 hp Baldor, 9 gpm

Fueling stations port & starboard aft

2- Steering pumps: 10 hp, hydraulic

1- Bilge pump Baldor 25 hp driving Goulds pump, 400+ gpm world energy

CENTRIFUGE:

Westfalia OTB 200 066, 30 gpm

BOW THRUSTER:

Hydraulic, powered by Detroit 671 75KW 1848 (SMOH)

HYDRAULIC SYSTEM:

1- 100 hp Electric-Hydraulic

1- PTO from Bow Thruster

FRASER

RUNNING GEAR:

2- 70" 4 Blade rops

2- 6" diameter shafts

GROUND TACKLE:

1- 1 1/4 hydraulic dual anchor winch

2- 720' x 1.25" chain P/S

2,000 lb anchor

1,500 lb anchor

CRANE:

Grove RT 60 pedestal crane 17 Ton lifting capacity, booms out 51'

AIR CONDITIONING:

Mitsubishi City Multi R2-Series

1- 192,000 Btu compressors serving 16 units

ICE MAKERS:

1- Manitowoc 500 lbs/day in garage

1- Manitowoc 400 lbs/day in galley

1- Manitowoc QM45 45 lbs/day in both bar

OILY WATER SEPARATOR:

Recovered energy, Boss 107 @ 15 ppm

WATER MAKER:

Village Marine PW 5000 with media filter 5 membrane, 7,000 gpd

FRASER

DIVE COMPRESSOR:

Nuvair 5.5hp, model MCH-13, fills standard dive bottle in 7 mins.

TENDER & WATER TOYS

1- 16' aluminum hulled "Zodiac"

Standup Paddle boards

Kayaks

Fishing equipment and snorkel gear

Dive Compressors: (1) Nuvair 5.5hp, model MCH13

Stnd. (Serviced 11/18) Fills dive bottle in 7min

SAFETY

Fire Systems

1- Fire alarm system FireShield

1- Eroom

Fixed Halon 1301, 285 lb

Portable fire extinguishers throughout, various 26 types

1- Fire suit and OBA

2- Axe

4- Escape hoods

1- Fire blanket

6- Fixed water mains, bronze nozzles, 50' hose

1- Fire pump 20 hp driving frame pump, 400+ gpm

General

1- EPIRB - McMurdo G5

FRASER

2- SARTS, McMurdo S4 & SIMRAD SA50

6- Hand held flares, Pains Wessex MK 8

3- Parachute flares, MK 8

3- Floating smoke – Pains Wessex MK 5

1- Rocket launching gun - Comet

4- Rockets, #9112700

2- 30" Solas life rings with Pains – Wessex strobe and smoke

1- Signal Lamp, Hella 55/100 WATT

1- 17' Jacobs ladder

4- Zodiac SOLAS a life raft – 16 person

2015 – REFIT WORK

Replaced both main engines in December 2014 with newly factory rebuilt D149's

New communication computer, Navigation computer and MaxSea software

Applied Propspeed to propellers

Painted entire hull and top sides

New electronics mast

New GPS antennas

Installed new V7 antenna

Serviced and renewed Vulcan Range

Replaced refer compressor

Replaced MSD saltwater supply pump

Renewed Deckma cell in MSD and recertified

Renewed and serviced water maker

Converted ship's interior and exterior lighting to LED

Replaced crane wire with new 9/16" cable

Rebuilt starboard gearbox

Neal Esterly Neal.Esterly@FraserYachts.com

+1 619 823 9034

FRASER

Extended Bulwark aft for greater wave protection of working deck

Complete overhaul of ships running gear in drydock: new bearings, straightened shafts, balanced props, replaced one coupler, new packing, and new rudder packing

Pulled and straightened shafts

Trued both propellers

Replaced intermediate and strut bearings

Refloated new bearings in new Chockfast

Laser aligned drive train

Complete service of crane block and hydraulics

Hydrablasted hull to bare steel and applied new antifouling paint

Cropped and renewed steel throughout the vessel based on audio gauging reports – under ABS surveyor's inspection

Cleaned chip and paint tanks

Installed jacuzzi on sun deck

Installed steel structure and shade above outdoor bar seating to protect them from elements

Servicing of anchor windlass

Replacement of MSD tank motor

Top-end servicing of CAT Diesel 3306 generators

Crane load testing, wire inspection and certification

Dive compressor full servicing

REFIT 2020 IN SAN DIEGO, CA & ENSENADA, MX

Vessel was changed from St Vincent registry to US allowing GT to be measured under 284 GRT (Note: ITC GT is 654)

Complete audio gaging of hull, decks, superstructure under Lloyds supervision

All plating needing replacement was completed using a Lloyds certified welder

Bottom sanded, primed and antifouling applied

All safety equipment brought up to date and certified

Shaft packings inspected and condition approved

Underwater valves tested for operation

43 of 55 zincs replaced

FRASER

REMARKS

The 2008 retrofit transformed the Lloyds certified 1978 offshore supply vessel into the Pacific Provider expedition yacht by adding a superstructure to include: guest staterooms, additional crew quarters, restaurant sized galley, lounge, dining room, indoor and outdoor bar areas and sun deck. This retrofit was supervised by Stan Antrim, founder of Shadow Marine and Yacht Escort Ships. Boris Krilloff and Associates served as Naval Architect ensuring a high-quality build and design for long term performance. The work was done at the Stabbert Maritime shipyard in Seattle.

This vessel is designed to provide guests all the comforts of home and transport them safely offshore, providing new places and experiences with nearly any limitations. With a 91,000-gallon fuel capacity, the Pacific Provider can reach further than most ships of its kind and stay there for extended periods of time. Her 12,000-mile range can make the most remote atoll or island easily accessible.

With a capacity to make 7,000 gallons of fresh water a day, 4 ice makers, and power to support several game boats and watercraft, the Pacific Provider can do it all. Her tough commercial exterior can withstand the rigors of hurricane force winds, driving rain, or blistering heat without damage to materials used on a typical "megayacht." Her interior accommodations for 12 guests plus up to 12 crew are luxurious, special and provide a feeling of being at home while miles offshore.

With little preparation needed, PACIFIC PROVIDER stands ready to head out on an adventure.

FRASER



FRASER







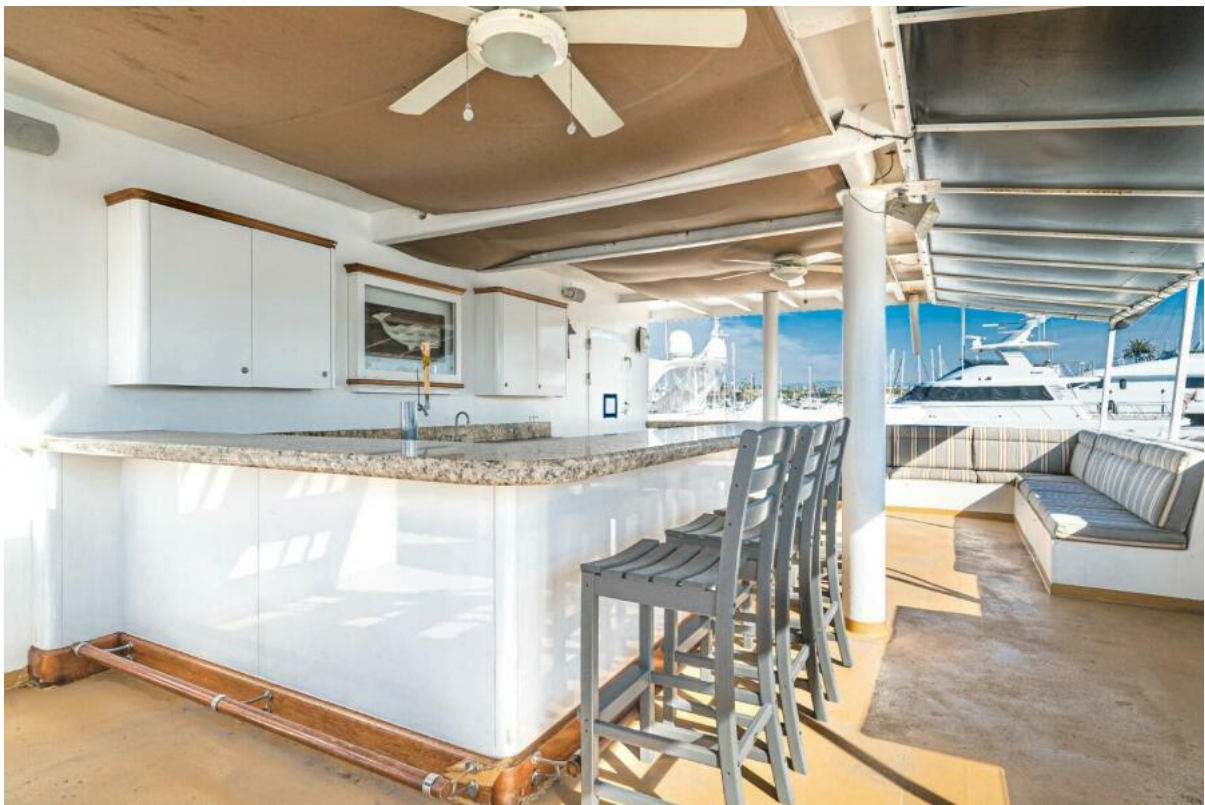
FRASER



FRASER

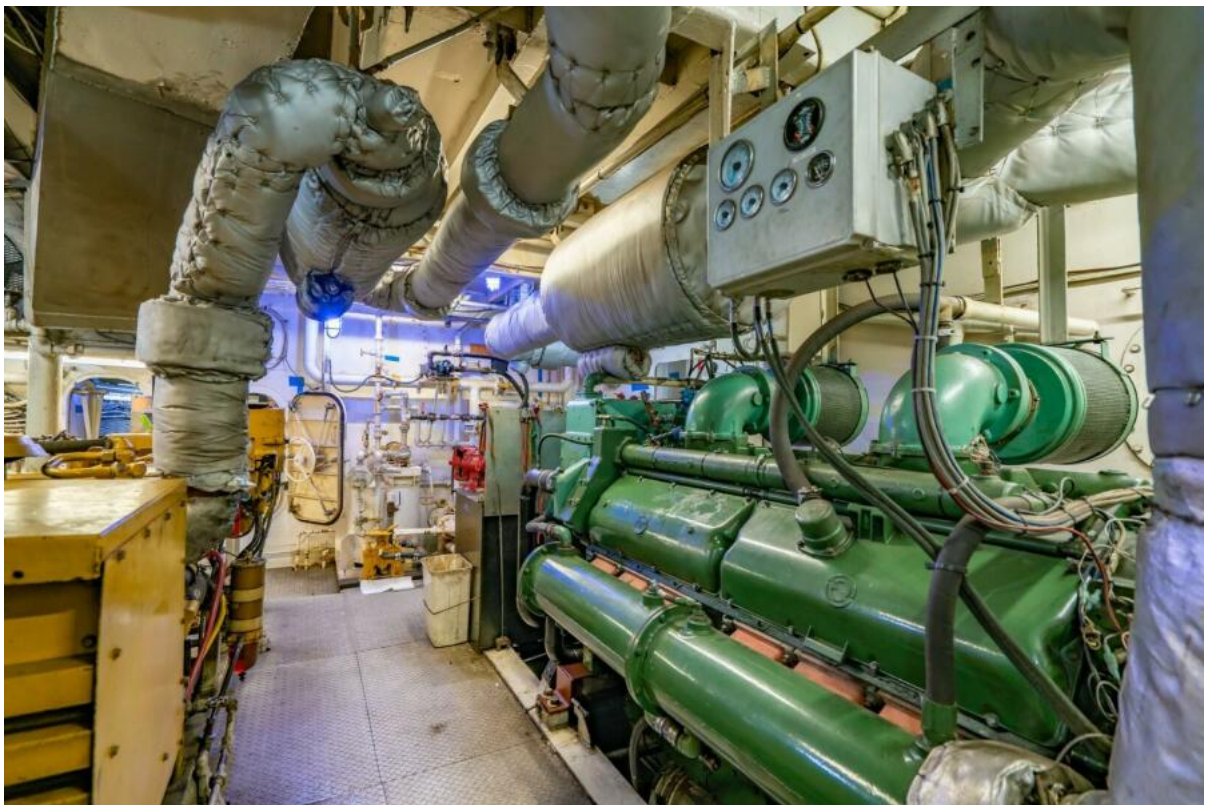


FRASER



FRASER





FRASER



FRASER

