



MAHANA

78' (23.77m) 2001 West Bay Sonship
San Diego California United States



OVERVIEW

Manufacturer: *West Bay*

Engines: 2 DDC/MTU

Engine Model: DDC/MTU 12V2000 DDEC

Engine HP: 1350

Beam: 20' 0"

Max Draft: 5' 5"

Water: 600 G (2271.25 L)

Hull Material: Fiberglass

Cruise Speed: 21 Knots

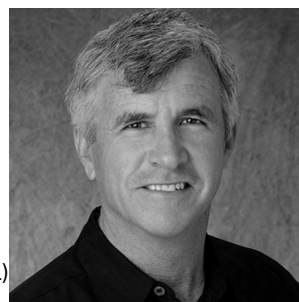
Max Speed: 29 Knots

Cabins/Heads: 3 / 2

Fuel Type: Diesel

Fuel: 2750 G (10409.88 L)

Call for Price



Neal Esterly Neal.Esterly@FraserYachts.com

+1 619 823 9034

FRASER

Data Sheet

Category: Motor Yachts
Condition: Used
Model Year: 2001
Beam: 20' (6.10m)
Max Draft: 5' 5" (1.65m)
LOA: 78' (23.77m)
LWL: 77' 1" (23.50m)
Cabins: 3
Sleeps: 6
Heads: 2

Crew Cabins: 1
Crew Sleeps: 2
Maximum Speed: 29 Knots
Cruise Speed: 21 Knots
Fuel Type: Diesel
Hull Material: Fiberglass

Gross Tonnage: 119
Displacement: 118000 Dry Weight: 11 lbs
Stabilizers: Standard
Stabilizer Brand: Westar
Bow Thruster: Yes
Stern Thruster: Yes
Fuel Tank: 2750 gal (10409.88 liters)
Fresh Water: 600 gal (2271.25 liters)
Holding Tank: 200 gal (757.08 liters)
Builder: West Bay
Interior Designer: Cary Vogel
HIN/IMO: BZH07011C101

Engines/Generators

Engine 1

DDC/MTU
DDC/MTU 12V2000 DDEC
Inboard
1350HP
Fuel: Diesel
Hours: 2909
Location: Port

Engine 2

DDC/MTU
DDC/MTU 12V2000 DDEC
Inboard
1350HP
Fuel: Diesel
Hours: 2926
Location: Starboard

Generator 1

Northern Lights
32KW
Hours: 2700

Generator 2

Northern Lights
20KW
Hours: 2600

FRASER

Summary/Description

MAHANA'S interior is beautifully finished in American cherry wood with a satin varnish. All carpet was replaced in 2019. Much of the interior was replaced and redesigned in 2018 by Nationally Award Winning ISD designer Cary Vogel.

OVERVIEW

MAHANA'S interior is beautifully finished in American cherry wood with a satin varnish. All carpet was replaced in 2019. Much of the interior soft goods and some furnishings were replaced in 2018 by Nationally Award Winning ISD designer Cary Vogel.

Sleeps 6 guests in 3 cabins midship and forward and two crew in one cabin aft of the engine room. Boarding at the swim platform, there is a watertight transom door to the crew area and engine room. Port and starboard entryway stairs with teak treads lead up to the exceptionally large aft deck. Through s/s double doors to the salon. Forward and up two steps the galley to port and the pilothouse is forward. From the pilothouse area there are stairs up to the flybridge and boat deck, port and starboard side doors to the wide walkaround side decks and forward stairwell down to the three guest cabins.

AFT DECK

- Teak decks
- Large settee with light mahogany varnished table
- (4) Adjustable teak chairs with cushions
- Wet bar with sink & large Sub-Zero s/s refrigerator with ice maker (2019)
- 55" Samsung TV hidden in overhead on a mechanized lowering device
- Stainless steel and plexiglass side gates at the stern stairs and side decks
- Double s/s and glass doors to saloon with disappearing screen doors
- S/S ladder to upper deck

MAIN SALON

A comfortable and open area with good viewing out the side windows and convenient access to the galley and aft deck.

- 6' 10" headroom
- Wood shutters on large side windows
- New carpet throughout

FRASER

- Large U-shaped sofa on port
- (2) Swivelling barrel chairs with storage under cushions
- Large rectangular leather Ottoman with storage inside
- Built in wine cooler for 12 bottles
- Samsung 50" curved flat screen television on lift
- Denon Home entertainment wireless system, multi-zoned for main and upper decks
- Onkyo tuner
- Sony CD player
- Sony DVD player
- Two-way KVH HD antenna, boat antenna and cable television system

MASTER STATEROOM

To maximize size and comfort the owner's stateroom is located amidship and forward of the engine room. This stateroom is unusually large for a boat of this size. Uniquely, there is an adjoining study / sitting area with a L-shaped settee and shelving for books and art that has been incorporated into the owner's cabin. There is ample headroom of 6' 8".

- King size berth with drawers below
- (2) Teak end tables, each with decorative lamp
- Rectangular Ottoman with inside storage at foot of bed
- Two large cedar lined walk-in closets
- chest of drawers and cabinets
- Linen closet
- 3 Opening ports
- Samsung TV with Apple TV and Direct TV
- Denon stereo with surround sound
- Ensuite head
- Large stall shower
- Toilet
- Sink
- Opening port

FRASER

FORWARD STATEROOM

- Island queen size berth with storage below
- (2) Reading lights
- (2) Opening overhead deck hatches for light and ventilation
- Two large cedar lined walk-in closets
- Cedar Lined hanging locker
- Drawers
- Samsung TV with Direct TV
- Stereo with surround sound
- Ensuite head
 - Stall shower
 - Toilet
 - Sink

MID-GUEST CABIN

- Over under Berth with twin above and double below
- Drawers
- Opening Port
- Tv and stereo

GUEST / DAY HEAD

Located opposite the Mid-Guest cabin, it can also be used as a day head.

- Stall shower
- Sink
- Toilet
- Opening port

LAUNDRY

FRASER

Located at lower deck aft of the Guest Head.

Full size Maytag stacked washer dryer (2019)

GALLEY AND DINNETTE

Opening in aft bulkhead for viewing to salon and aft deck. Immediately forward with easy access is the large dinette. There is plenty of built-in storage.

- GE Signature side-by-side full sized refrigerator
- Broan #1051 trash compactor
- Fisher Pykel dishwasher (2020)
- Jenn-Aire cooktop with oven
- Corian counter with corner storage
- In-Sink-Erator garbage disposal
- GE microwave/convection oven #JVM1190
- 2" wooden blinds with lambrequins
- Rope lighting in soffit edge
- Genuwood flooring for durability
- Large Burlwood table with leaf and settee sits six guests. Note: helm chairs are positioned to swing 180 degrees and face aft and be used as seating for the table

FLYBRIDGE AND BOAT DECK

There is easy access via carpeted stairs from the pilothouse or up a ladder from the aft deck. The flybridge is fully enclosed with a fiberglass hardtop and new Strataglass making it a comfortable place in a wide range of weather. The large boat deck can be utilized as an entertainment area by easily removing the tender and its chocks.

- Teak deck in flybridge area (re-seamed & sanded 2022)
- (2) helm chairs
- Large L-shaped settee with storage below
- Additional storage behind settee accessed from the boat deck
- Built in custom cabinet: S/s Sub-Zero refrigerator with ice maker and wine cooler
- Large storage cabinet for fenders and more
- Factory hardtop
- Strataglass enclosure (2022)

FRASER

- 32" Samsung TV hidden in overhead compartment, hinges down for viewing
- Stereo with surround sound
- Fusion Direction Pod speakers

BOAT DECK

- Rendova 14' hardbottom inflatable with Fusion stereo, underwater lights and spotlights
- Honda 70 hp outboard (2019)
- Removable chocks
- Steel Head fully functional hydraulic davit
- 8-person Zodiac life raft with hydrostatic release
- (4) Chaise lounges
- (4) Deck chairs
- EPIRB
- Antenna mast

SWIM STEP, UTILITY AREA, CREW QUARTERS AND ENGINE ROOM

Entering from the swim step through the watertight transom door, the utility room is large with port and starboard lockers for the Glendinning cable collectors. To port is the crew mess with sink, refrigerator, and microwave. On Starboard is an s/s workbench with storage for tools and spare parts. Next forward to the port is the air-conditioned crew quarters with a twin upper berth and single berth below, locker, drawers, TV and stereo. Across the passageway is the crew head with large storage lockers, head and stall shower. There is an emergency egress hatch in the overhead to the above aft deck. Next enter the watertight door to the engine room the engine room is clean, orderly and well laid out with ample vertical space to stand upright.

ELECTRONICS AND COMMUNICATION

LOWER HELM

- Furuno MaxSea TimeZero Explorer chart plotter (2019)
- Tracking ball for plotter
- 15" Monitor (2019)
- KVH Azimuth 1000 digital compass
- Furuno 7252-6 radar with 20-meter cable
- Furuno 1942 backup radar system
- Furuno FCU582 color sounder

FRASER

- ICOM M127 VHF radio
- ICOM UA4 hailer
- Intercom speaker
- Northstar 952 DGPS with combo antenna
- Simrad AP2004 autopilot with RPU80 pump
- Furuno Link system (new 2016)
- Furuno wind masthead unit (2016)
- Furuno wind display (2016)
- Furuno depth display (2016)
- Furuno speed display (2016)
- SSB radio HF Marine ICM - 802
- 6" Brass Chelsea Clock & Barometer
- Eplex CCTV with 4 cameras
- VGA splitter with 50' cable
- Stand-alone computer with Cmax software, RF mouse and keyboard
- (2) Furuno multi-displays (master and crew quarters)
- Tank Tender
- Bilge high water alarm
- Fire suppression switch

UPPER STATION and At Engine Room Door

- Simrad AP20 autopilot repeater
- Furuno FMD 1832 radar remote
- Furuno fathometer
- ICOM M127 VHF radio / hailer
- ICOM intercom speaker
- Ocean PC 15" display
- Simrad Rate compass upgrade
- (2) Green Marine 15" displays
- Ritchie Compass

SATELLITE COMMUNICATION

KVH Sat TV using Direct TV

KVH Sat phone

One empty dome to aesthetically balance domes mounted to mast

ENGINE AND MECHANICAL

- (2) DDC / MTU 12V2000 DDEC 1350 hp (Hours as of 4/2022: P- 2909, S- 2926)
- Westmar Gyro stabilizers
- Key Power hydraulic bow & Stern thruster
- (2) Village Marine 80 gph watermakers
- Cruise Air reverse cycle air conditioning throughout (serviced 3/2022)
- Audible temperature and oil pressure alarm systems (DDED)
- Trim tabs
- Fireboy fire suppression halon automatic system
- (2) dual Recor fuel filtering system on each main engine
- Tools drawers and tools
- Extensive spares
- Macerator pump with overboard discharge for black water tank
- Port and starboard wing stations with full controls at side decks, hidden away

ELECTRICAL

- 100-amp 125/250 VAC shore power connected to (2) 50- amp 125/250 VAC cords
- (2) Glendinning cable masters
- Northern Lights 32KW with soundsheild (2700 hours)
- Northern Lights 20 KW with soundshield (2600 hours)
- DC alternator
- 24 VDC starting batteries for each engine

FRASER

- Trace 4000 inverter with maintenance-free 24 VDC batteries (630-amp hours)
- Sentry 24v/40-amp battery charger
- Sentry 24v/25-amp battery charger
- Phase 3 12v 22-amp battery charger

DECK EQUIPMENT

- Muir hydraulic anchor windlass
- 400' chain and polished s/s anchor on bow roller
- Removable s/s stern rails at swim step
- Removable swim ladder
- Dual air horn at brow
- Remote control search light at brow
- Large sunning pad at foredeck
- Underwater lights

TANKAGE

- Fuel tank capacity - 2750 gals
- Water tank capacity - 600 gals
- Black water tank capacity - 200 gals

REMARKS

MAHANA is one of the best examples of this well-known, high-quality builder (West Bay Sonship). Launched in 2001, she reportedly had over 209 change orders during her construction from a knowledgeable first owner, many of which West Bay incorporated into future builds. Thirty of these versatile yachts were built. MAHANA is in impeccable condition and has been continually upgraded by each of her three excellent owners. Her current owner and captain take the maintenance approach of preferring where possible, to "replace with new rather than repair the old." With bow and stern thrusters and well-positioned hide-away port and starboard wing stations, she is easy to operate as an "Owner Operator" or shorthanded. Her many custom features lend to the comfort and ease of use by anyone aboard. She is an ideal entertaining yacht that has cruised the entire West Coast.

EXCLUSIONS

Neal Esterly Neal.Esterly@FraserYachts.com

+1 619 823 9034

FRASER

Personal effects

Selected artwork

FRASER



FRASER



FRASER



FRASER



FRASER





FRASER



FRASER



FRASER







FRASER



FRASER



FRASER





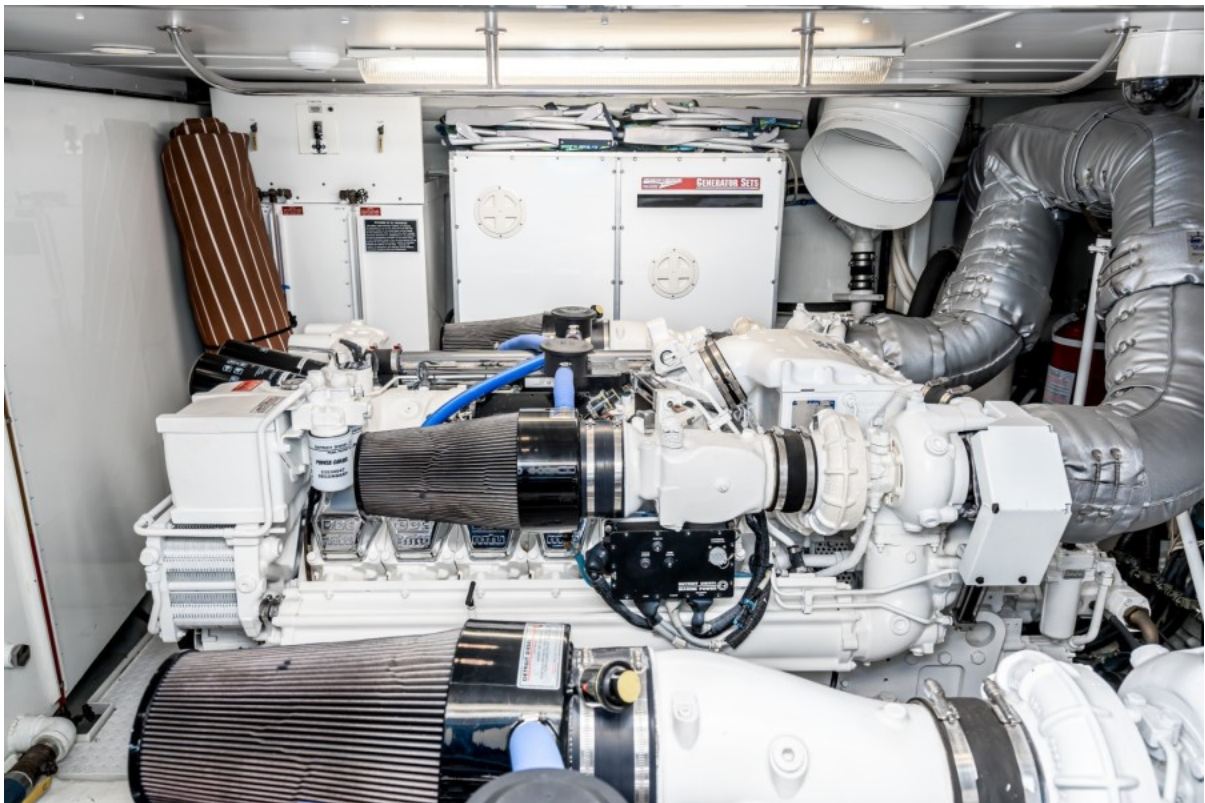
FRASER



FRASER



FRASER





FRASER



FRASER



FRASER

