



GRADE I

142' (43.28m) 1995 Christensen Tri-deck Motoryacht
Nassau Bahamas



OVERVIEW

Manufacturer:	Christensen		
Engines:	2 DEUTZ	Hull Material:	Composite
Engine Model:	TB 604 BV12	Cruise Speed:	12 Knots
Engine HP:	2165.75	Max Speed:	17 Knots
Beam:	27' 7"	Cabins/Heads:	6 / 8
Max Draft:	6' 10"	Fuel Type:	Diesel
Water:	1500 G (5678.12 L)	Fuel:	8500 G (32175.99 L)

\$8,795,000



FRASER

Data Sheet

Category: Motor Yachts
Subcategory: Trideck
Condition: Used
Model Year: 1995
Refit Year: 2018
Documented Year: 1995
Beam: 27'7" (8.41m)
Max Draft: 6' 10" (2.08m)
Min Draft: 6' 10" (2.08m)
LOA: 142' (43.28m)
LWL: 129' 2" (39.37m)
Cabins: 6
Sleeps: 12
Twin Berths: 2
Queen Berths: 4
King Berths: 1
Full Beam Master: Yes
On Deck Master: Yes
Heads: 8

Crew Cabins: 5
Captain's Quarters: Yes
Crew Sleeps: 10
Crew Mess: 1
Maximum Speed: 17 Knots
Cruise Speed: 12 Knots
Range NM: 3000
Fuel Type: Diesel
Super Structure Material: Composite
Fiberglass
Hull Material: Composite
Hull Shape: Semi Displacement
Hull Finish: AWLGRIP
Air Conditioning: Yes

Gross Tonnage: 372
Displacement: 213.97 tonnes
Stabilizers: Standard and Zero Speed
Stabilizer Brand: NAIAD
Bow Thruster: Yes
Fuel Tank: 8500 gal (32175.99 liters)
Fresh Water: 1500 gal (5678.12 liters)
Holding Tank: 1100 gal (4163.95 liters)
CE Certified: No
Classification: Bureau Veritas (BV)
Imported: No
Builder: Christensen
Interior Designer: Destry Darr Designs
2018
Exterior Color: White

Engines/Generators

Engine 1

DEUTZ
TB 604 BV12
2165.75HP
1615KW
Fuel: Diesel
Hours: 1923
Hours Date: 02-20-2023
Location: Port

Engine 2

DEUTZ
TB 604 BV12
2165.75HP
1615KW
Fuel: Diesel
Hours: 1902
Hours Date: 02-20-2023
Location: Starboard

Generator 1

KHOLER
80E02D
80KW
Hours: 2891
Hours Date: 02/20/2023

Generator 2

KHOLER
80E02D
80KW
Hours: 3000
Hours Date: 02/20/2023

Generator 3

NORTHERN LIGHTS
m1064d
40KW
Hours: 891
Hours Date: 02/20/2023

Summary/Description

GRADE I continues to impress with the innovative features of her build pedigree. Enhanced by a major refit, she continues to offer a superb layout for active family use and is popular in charter. She has based in South Florida most of her life.

DETAILED SPECIFICATIONS

MAIN CHARACTERISTICS

Name: GRADE I

Type: Motor yacht

Builder: Christensen Shipyards, Ltd.

Year: 1995

Refit Year: 2011/2014/2018

Hull No: 016

Yacht Model: Tri-Deck M/Y

LOA (M/FT): 43.28 M 142' 00"

LWL (M/FT): 39.37 M 129' 02"

Beam (M/FT): 8.41 M 27' 07"

Draft (M/FT): 2.08 M 6' 10"

Gross Tonnage: 372 GRT

Net Tonnage: 111 NRT

Displacement: 213.97 MT

Hull Material: Composite

Hull Configuration: Semi-Displacement

Superstructure: Composite

Decks: 4

Deck Material: Fiberglass with teak overlay

Flag: Marshall Islands

Classification: Bureau Veritas (BV)

FRASER

Exterior Designer: Ward Setzer

Interior Designer: Destry Darr Designs 2018

Main Engines: 2 x Deutz TB 604 BV12, 1,980HP each

Speeds: 17kn Max

12kn Cruising

11kn Economical

Range: 3,000 nm @ 11kn

Guest Accommodation: 12 guests in 6 staterooms

Crew Accommodation: 10 crew in 5 cabins

NOTEWORTHY FEATURES AT A GLANCE

- 9-month refit in 2018
- Install new Naiad at rest speed stabilization system including fins and hydraulic packs
- Complete hull and superstructure paint (2018)
- Renovated and re-configured skylounge, including new entryway aft (2018)
- Fabricated fixed fiberglass hardtop extension over FB aft deck which offers an extended sundeck (2018)
- New interior stone with intricate marble designs
- New Led lighting throughout the vessel and misc. new fixtures
- New ebony wood veneer in guest s/r's and other locations throughout the interior

CLASSIFICATION

Flag: Marshall Islands

Port of Registry: Bikini

Classification: Member of IACS

IACS Society: Bureau Veritas

Additional Class Information: Commercial

US Tax Status: Duty Paid

Lon McCloskey lon@fraseryachts.com

1-954-463-0600

FRASER

WALK-THROUGH

SWIM PLATFORM:

Starting aft, Grade I has a custom fabricated passarelle, spanning the entire swim platform, making boarding from the rear easy. The passarelle leads to a spacious lower terrace, guarded port and starboard by bulwarks. SS removable hoop rails provide safety and visibility to the water. This deck has ample room for staging the water toys and equipment. A removable awning and lounge chairs provide a shady and comfortable beach club. Access to the lazarette and engine room is through a hydraulic hatch forward. Port and starboard stairwells lead to the aft deck.

MAIN DECK AFT:

The built-in settee aft is angled in on each end seating six. The large teak table is also angled on each end and forward is slightly curved. The custom teak and polished aluminum chairs seats six, for a total seating of 12. There are settee lounges on port and starboard. Forward is a J-shaped stone covered bar with four custom bar stools. The bar contains refrigeration, storage, icemaker, ss sink and doubles as a buffet counter for food service. Two TVs are mounted on the air trunks port and starboard. Outboard the air trunks are the walk-around side decks. Doors can close off the side decks for wind, rain, or privacy.

MAIN SALON/DINING:

Entering dual polished ss doors from the aft deck to starboard, the main salon view is dramatic due to the large windows and low gunwale height. A game table with two chairs are set beside the window to the aft deck. In the center of the salon rests two high back sofas across from each other around a glass and wooden circular table. Two large armchairs are adjacent. The salon and dining area are separated by an island Onyx covered cabinet. The salon TV raises from the island and the entertainment is housed inside the cabinet. The glass dining table seats 10-12 and has a sculpted glass chandelier above. The forward bulkhead has storage for china, flatware, and stemware. Access to the galley is through the service door to port. Starboard forward is the main deck foyer, with access to the main deck dayhead, the stairwell to the lower guest cabins and the upper guest foyer, as well as an entrance to the on-deck master.

Redesigned in the 2018 refit, the stairwell in the main deck foyer is a dramatic example of the depth of this refit. Enlarged by the removal of the elevators, the chrome supports, with glass and wood stairs in the stairwell, are highlighted by the mother-of-pearl wall covering. A full height bronze statue completes the scene. Opposite the stairwell and outboard is a cabinet with a wine cooler and storage lockers.

GALLEY

The galley is on the main deck, forward of the dining room through the stew pantry, and is well laid out for preparation and service, with access to the crew's quarters below and wheelhouse above, as well as main foyer, greatly reducing crew movement in the owners and guest areas. The well-equipped galley is ideally suited for preparation of culinary delights and offers all the storage and appliances a chef could wish for! Separated from the galley by an island bar with bar stools, storage and well positioned preparation countertop, the stew pantry is to port with an additional sink, icemaker, dishwasher and trash compactor and counter space with more storage below.

FRASER

OWNER'S STATEROOM:

Forward on the main deck off the foyer, double doors lead to the owner's private office. There are doors to the stateroom providing privacy for each space. The full-beam, on-deck master suite features a centerline king berth, with nightstands on both sides. The closet runs athwartship and has a secondary lockable "charter" closet. Dressers and settees are outboard underneath the hull-side windows. The entertainment center is on the aft bulkhead.

The forward bulkhead doors lead to the redesigned His and Her baths, each with own entrance, offering two vanities with sinks and storage, and toilettes separated by a huge, glass doored marble shower, accessible from either side. The jacuzzi tub is accessed from the port side.

LOWER DECK:

GRADE I features five guest suites in the lower accommodation area. There are two guest suites forward, each with queen-sized berth, nightstands, hanging wardrobe and drawer storage, and ensuite. Aft of these two cabins in the guest foyer is a laundry closet with washer and dryer, and a linen closet. To port is the twin-bedded stateroom with nightstand, hanging wardrobe and drawer storage, and ensuite. Further aft are two queen-sized guest staterooms, each with walk-around queen berth, hanging wardrobe and drawer space, and ensuite bathrooms, both with shower, vanity with sink and storage and toilette.

BRIDGE DECK:

Entering the bridge deck landing from the stairwell, the wheelhouse is forward. Port and starboard wing doors lead to walk-around side decks, and forward of the wheelhouse is a semi-circular lounge pad. The wheelhouse is well-equipped with modern navigational electronics and flat-panel screens. Bench seating and storage drawers are abundant. To port is the captain's stateroom with ensuite head.

Aft from the stairwell is a day head, immediately followed by the sky lounge. Similar to the lower deck, large windows highlight this upper salon. Redesigned in 2018, there is a full bar athwartship and forward. Two occasional chairs look forward to the barkeep, glass, and stemware cabinet. Opposite to starboard is a circular glass table and four chairs. Matching L-shaped sofas look aft and have large ottomans to provide lounging comfort. Center on the aft bulkhead is the TV entertainment center. A door to the upper aft deck is to port.

The upper aft deck features a large rectangular teak dining table for 10-12. During the refit, the flybridge deck was extended to cover this area. Walk-around deck access is port and starboard and the aft circular stairwell to the lower deck is to starboard. Dual davits enable launching its center-mounted tender to either side of the vessel. A ladder to starboard leads to the flybridge.

SUN DECK:

Another transformation from the refit is the extended aft hardtop, which made possible an athwartship island bar with four barstools, storage cabinets, ss sink, and refrigeration units. Aft and uncovered from the hardtop are teak chairs and

FRASER

tables. Forward of the bar, on the center, is a circular hot tub covered by the custom fiberglass hardtop with arch style supports, there is a bubble in the top for clearance. Outboard are storage lockers and a SS grill on stbd. The former upper control station was converted into a large sun pad extending the width of the flybridge. Dual double-wide helm bench seats face forward to the sun pad. A weatherproof TV is housed on the port arch.

CREW ACCOMODATION:

Down the crew stairs from the galley is the crew lounge/mess to port with crew galley, seating/dining area, security monitors, and entertainment center, with the dedicated laundry room with stacked dryers, washing machines, and laundry tub. Immediately forward are mirror image chef's and engineer's cabins, each with full size double berth outboard, desk, dresser, hanging wardrobe, and ensuite bathrooms with stall shower, vanity with sink and storage, and toilette. All the way forward are two identical crew's cabins with upper and lower outboard berths, ensuite bathrooms with stall shower, vanity with sink and storage, and generous wardrobe and drawer storage.

CONSTRUCTION

Hull Material: Composite / GRP

Superstructure Material: GRP

Decks Material: Teak overlay

Paint: Awlgrip

Motor Hull Type: Semi-displacement

Number of Decks: 4

CAPACITIES

Gross Tonnage: 372 GRT

Net Tonnage: 111 NRT

Displacement Tons: 213.97 MT

Fuel Capacity: 32,176 Litres 8,500 Gallons

Day Tank: 3,482 Litres 920 Gallons

Fresh Water Capacity: 5,678 Litres 1,500 Gallons

Water Makers (per day): 11,356 Litres 3,000 Gallons

Grey Water: 758 Litres 200 Gallons

FRASER

Black Water: 4,164 Litres 1,100 Gallons

Lube Oil: 587 Litres 155 Gallons

Waste Oil: 587 Litres 155 Gallons

Speed Range

Maximum: 17 knots

Cruising: 12 knots

Economical: 11 Knots 3,000 nm

MAIN MACHINERY

Main Engines: (2) Deutz TBD604-V12 1800hp @ 1650 RPM; 1,615 KW per engine

Engine Hours: Port: 1923hrs since overhaul, recorded February 2023

Starboard: 1902 hrs since overhaul, recorded February 2023

Propulsion Type: Direct Drive

Engine Controls: Mathers

Engines Exhaust System: Metcalf

Gear Boxes: ZF BW465 with ratio; 3.037:1

Shafting: 4.5" Non-magnetic, stainless-steel shaft with bronze shell rubber composite bearing. Stern tube, fiberglass shaft support.

Propellers: Federal 5-blade NiBrAl 55" diameter x 53" pitch. Approx. 11.25" tip clearance.

Engine Ventilation: Delta "T" engine room ventilation

GENERATORS & ELECTRICITY

Output/Electricity: AC: 220/208 Volt 60Hz three-phase

DC: 24 Volt

Generators: 2 x Kohler 80E02D 80kW three-phase synchronous generators. (New 2007)

Generator Hours: Port: 2891hrs since overhaul, recorded February 2023

Starboard: Approx. 3000hrs, recorded February 23

Night Generator: 1 x Northern Lights M1064D 40kW three-phase synchronous generator. (Lazz)

FRASER

Night Generator Hours: 891hrs, recorded February 2023

Shore Power: 2 x shore inlets located port aft lazarette, each fitted with Hubbell 4 core two AWG yellow jacket ashore cables. Inputs rates at 100amps

Shore Power Converter: Atlas 60kVA 50/60Hz

Model: SPCL1175KX6X3-XL-MD-ST2-SB120

S.N.: 4227-001

Input volts: 190-500 VAC

Input Hz: 40-70Hz

Output Volts: 120/208

Output amps: 208

Output Hz: 60Hz

Output power: 75Kva/ 60Kw

Shore Power Transformer: Merlin Gerin NS250N over current protection breaker, the breaker is fitted with a TMD 250 thermal magnetic trip module set to trip at 200 Amps.

Batteries: 2 x 24vDC for Engine starting, House, Generator, and Emergency

1 x 12VDC

Battery Chargers: 2 x Sentry 40amp

1 x McCarron 40amp

UPS (uninterruptible power supplies): Yes

AUXILIARY MACHINERY

Steering System: Jastram Electric-Hydraulic

Steering Gear: Custom made power pack with a single oil reservoir, two (2) electric driven oil pumps, return line filter, servo block and pressure gauge.

Dual steering rams

12 ft² rubber rudder with integrated steel web welded to 5" Aquamet 17 stocks and keyed to tillers.

- Thordon upper & lower bearing
- Steel tie bar approx. 100" between tillers
- Auto-pilot pump in wheelhouse

FRASER

- 17" stainless-steel helm wheel
- Anschutz autopilot & tiller follow up

Bow Thruster: Wesmar 80hp in 20" tube 4-blade

Stabilizers: Naiad 522 with 2 x 25ft2 fins 2,250psi

Underway and At-Ancor

18.5kW motor with frequency drive for "At anchor" stabilization.

Pressure is provided to the fin heads underway using the PTO's driven from the engine gear boxes.

Under Water Lights: Transom: 3

Side Stern: 2 each port and starboard

Helm/Wing Station Controls: 3 x control stations (Pilothouse; Port & Stbd wing stations)

Fuel & Oil System

Fuel Filtration: Alfa Laval MAB 103B-24-60 Centrifuge 238 gal/hr

Fuel Transfer Filters: 3 x inline Racor 1000 fuel filters/water separators

4 x Parker installed in transfer system

Engine filters: 2 x Racor 71000MAX fuel filters/water separators with gauge and manifold per engine.

Additional Filters: 2 x sets of Duplex Racor for Generators

1 x Single Racor filter for night generator

Fuel Transfer Pump: 2 x Viking 15 GPM @ 25 PSI

Fuel Filling Pump: 1 x Gasboy 65 (13.5 GPM) in port side deck locker with hose, fill nozzle and fuel counter.

Bunkering Station: Port and Starboard main deck aft in lockers.

Tank Gauges: Telcor tank gauges for each tank

Firefighting & Bilge System

Firefighting & Bilge Pump & High water alarms

Bilge Protection: 5 x suction points to the main AC MP pumps

2 x Bilge Pumps and 1 x Fire pump interchangeable

Well labelled manifold-starboard forward engine room

Seven (7) submersible DC - pumps

FRASER

Fresh Water System

Fresh Water Makers: 2 x Horizon HRO1480-2SFC Reverse Osmosis @ 1,500 gal per day each

Fresh Water Tank: 1500 Gals. Frame 4.5 – 6 (Location: Stbd Engine Room)

Tank Monitoring: Tank Sentry and in the Headhunter STP

Fresh Water Pressure: Headhunter HH44 Water worker

Fresh Water Pump: 2 x Headhunter P1550W, 220V, 10amp

Hot Water Circulation Pump: Grundfos

Hot Water Boilers: 2 x HTP Model-EVC080C2T045 Rated: 240vac, 3ph, 4500watt, 80 gallons

Black & Grey Water System

Black & Grey Water Treatment: Headhunter TW-HMX-6001

WC's (toilets/bidets): Fourteen (14) Headhunter Royal Flush

Grey Water Pumps: 2 x Submersible Liberty Pumps

Black Water Pumps: Headhunter Tortuga diaphragm pump (main)

Edison diaphragm pump (backup)

AC & Ventilation System

Air Conditioning: Cruiseair / Dometic MTC96DC 4 x 96,000 BTU (total 384,000 BTU / 32 Tons)

Air Compressor: Dayton – Speed Aire belt driven

4 x Fully hermetic scroll compressor cooling unit

4 x Compressor frequency drives

2 x Chilled water pumps

2 x Sea water pumps

Air Handling Units: 28

Engine Room Ventilation: Delta T Systems; 1 x Axial supply fan, 1 x Axial exhaust fan, 2 x frequency drives, 1 x Control Panel, 2x Fire Dampers.

Galley Ventilation & Extraction: stainless-steel extraction hood fitted with a small speed regulated fan and oil filters.

FRASER

Hydraulic System

Hydraulic Power Packs: 4 x axial piston hydraulic pumps feeding from 50 gal oil reservoir. The power pack is used for the One (1) Bow Thruster, Two (2) davits, Two (2) anchor windlass, Two (2) stern capstans

Antifouling System

Type: Sea Hawks Paints – Sea Hawk BIOCOP TF 1200-I Black

TBT-Free Anti-Fouling Coating applied February 2023

NAVIGATION & COMMUNICATION SYSTEMS

NAVIGATION SYSTEMS

Navigation Bridge:

Monitors: 4 x Vei 15" monitors

1 x Haoriz CCTV Monitor

X-Band Radar: 2 x Furuno RPU-013 X band Radars ARPA

S-Band Radar: Furuno 96nm range (Pilothouse)

Chart Plotter: Nobeltec Timezero

Magnetic Compass: Ritchie 4" Powerdamp

Gyrocompass: Anschutz STD22 with repeater

Auto Pilot: Anschutz PilotStar D

Rudder Angle Indicator System: Anschutz

Speed Indicator: B&G H3000 multi-function (Pilothouse)

Depth Sounders: B&G 3000 multi-function (Pilothouse)

Video Sounder: Furuno FCV-1200L

GPS: 2 x Northstar 60001 and 6000i

AIS: Furuno FA170

Navtex: Furuno NX700 w/Printer (Pilothouse)

Wind Indicator: B&G H3000 multi-function (Pilothouse)

Horn: Kahlenberg T-1, triple array trumpets

FRASER

Search Lights: ACR

Ships Computer: For Navigation only

COMMUNICATION SYSTEMS

VSAT: Starlink Maritime Flat HD Dish 100Mbps

KVH Fleet 77 V-Sat

SeaTel V-Sat with High Speed Internet 24/7

INMARSAT – C: Furuno F77

VHF Radiotelephones (Fixed): 2 x Icom IC-M602 (Pilothouse)

2 x Standard Horizon (Galley & Crew)

Portable GMDSS VHF: 2 x ICOM GMDSS waterproof VHF radios

Telephone System: Panasonic Hybrid with 4 lines

Cellular System: Motorola

Intercom System: Off Ships Phone System

Internal Ship's Communication: Panasonic Hybrid with 15 extensions

Printer: Cannon MX922

DECK MACHINERY & EQUIPMENT

Anchors: 2 x Custom Christensen Navy style Stainless-Steel

Anchor Chains: 2 x 500' x 5/8" galvanized chains (2013)

Anchor Windlass System: 2 x Muir VHC7000

Deck Capstans: 2 x Muir VHC4000 Hydraulic Vertical Capstan (Aft Stern Quarters)

Davits: 2 x Nautical Structures Capacity: 4000lbs (bridge deck aft)

Passerelle: Nautical Structures 19' x 42" "Transformer" Electric-Hydraulic

Sea-stair: Marquipt Sea Stairs

Swimming Ladder: Yes

Spotlights: ACR RCL-1000

Lon McCloskey lon@fraseryachts.com

1-954-463-0600

FRASER

Paint Exterior: Awlgrip

SAFETY, SECURITY, & FIRE FIGHTING EQUIPMENT

CCTV: Elbex with 5 Cameras (Aft & Sundecks, Port & Stbd Side Decks; Engine Room)

Monitors: 3 x Monitors (Pilothouse; Crew Lounge; Captain Cabin)

Fixed Firefighting System: Halon in Engine Room

5 x Seawater Stations

Firefighting Equipment: Handheld fire extinguishers throughout vessel

Fire Fighting Suits: As required by Class

Sprinkler System: Throughout Interior

Smoke Detection: Yes

Fire Alarm: Yes

Life Rafts: 2 x Elloitt 25man SOLAS U.S.C.G. approved in canisters

Life Rings: 6 x Life rings with lights, throw lines.

EPIRB: ACR Global Fix Pro 406Mhz (Sundeck)

SART: ACR Pathfinder3

Flares and Signals: Complete U.S.C.G. Signal Kit

Medical Equipment: Per required by class plus defibrillator

ENTERTAINMENT, AUDIO/VISUAL AND IT SYSTEMS

Video Equipment: Main Salon: Samsung 55" TV on power lift

Main Deck aft bar: 2 x 30" TV

Master SR: Samsung 55" TV

Sky Lounge: Samsung 48" TV

Captain Cabin: Samsung 21" TV & Verneu TV CCTV Monitor

Port Fwd. Guest: Samsung 28" TV

Port Mid Guest: Samsung 23" TV – Sony BluRay

Lon McCloskey lon@fraseryachts.com

1-954-463-0600

FRASER

Port Aft Guest: Samsung 28" TV – Sony BluRay

Starboard Fwd. Samsung 28" TV – Sony BluRay

Starboard Aft Samsung 28" TV – Sony BluRay

Crew Mess: Sharp 19" TV, Crew cabins: 15" & 19" Sharp TV

Stereos: 1 x Integra DTR-40.6 (Skylounge)

1 x Integra DTR-7.4 (Salon)

Control: Crestron

Other: Power Conditioners/Protectors (Salon; Skylounge)

WIFI: Yes

GALLEY & LAUNDRY EQUIPMENT

MAIN GALLEY EQUIPMENT

Cooking Equipment: Viking 6 burner

Ovens: KitchenAid 27" (self-cleaning), Wolf 35"

Microwave: KitchenAid

Refrigeration/Freezer: 2 x 35" SubZero with freezer drawers

2 x Cospolich custom S.S. under counter

2 x SubZero drawers

Dishwasher: Miele

Trash Compactor: KitchenAid

Ice Maker: 2 x Scotsman clear ice machines

Other: Custom S.S. fire/ventilation hood

PANTRIES AND OTHERS

Refrigeration/Freezer: Nordcold upright with Freezer (aft deck)

2 x Kenmore upright freezers (lazarette)

1 x chest freezer (lazarette)

U-line under counter refrigerator (sundeck)

FRASER

Wine coolers: 2 x U-Line (salon/dining)

1 x Whirlpool (main deck foyer)

Ice Makers: 4 x Scotsman clear ice machines (2 x galley, 1 x aft deck, 1 x sundeck)

KitchenAid clear ice (aft deck)

Dometic Eskimo E1540D (port side aft tech space)

Other: Alltesco gas grill with gas detector and solenoid shut off (sundeck)

CREW MESS EQUIPMENT / COOKING EQUIPMENT

Microwave: GE

Refrigeration/Freezer: Uline under counter refrigerator

Dishwasher: KitchenAid

LAUNDRY

Main Laundry Washers: (2) Miele W3037 (Laundry Room)

Main Laundry Dryers: (2) Miele T8023C (Laundry Room)

Additional Washer: (1) Miele T8023C (Guest Foyer)

Additional Dryer: (1) Miele W3038 (Guest Foyer)

Additional Laundry Equipment: Steam Iron, Wash Tub (Laundry Room)

OTHER EQUIPMENT

Spa Tub: Oversized Jacuzzi Spa on Sundeck

TENDERS & TOYS

Tender: 19'3 Novurania Catamaran Series w/ bow ramp and Yamaha 115 (2018)

Tender Fueling Station: Gasboy 65 (13.5 GPM) in port deck locker

Jet Skis: 3 x SeaDoo RXT230

Toys: assorted snorkel gear

FRASER

Diving Compressor: Brownies / Bauer SCUBA Tank air Compressor

CAPITAL IMPROVEMENTS

2023

Hauled out for bottom paint (February)

Remove shafts and props for class inspection and service.

Replace 55" TV on Sundeck

Boat Crane deck service

Install new Flat mount STARLINK antennas for system upgrade to Marine System.

Complete Flag and Class annual surveys

Replace steering pump at helm.

Service air handlers Master s/r, Main Salon, and lower cabins

Replace 2 air handlers in crew cabins, Service laundry units

Service all three generators

Replace AC raw water pumps

Replace 1 water maker unit

Tail shaft bearings replaced

Tail Shaft survey completed for Class

Renew bottom paint

2020

Rina 5-year class survey complete September 2020

Haul out, bottom paint, renew zincs, renew rudder bearings, drop stabilizer fins and service, renew and service steering rams and seals, remove props and balance, wash and wax hull sides, service sea valves, rebuild fuel polishing system and fuel valves, rebuild anchor windlasses, and reverse or renew anchor chain and anchors

2018

Exterior:

Complete hull and superstructure paint

Lon McCloskey lon@fraseryachts.com

1-954-463-0600

FRASER

New teak decks on sundeck, bow and steps

Renovate and re-configure sky lounge including new entryway aft

Fabricate fixed fiberglass hardtop extension over FB aft deck which offers an extended sundeck.

Fabricate new bar and seating on sundeck

Fabricate new FB aft deck dining area -table and seating for 12

New exterior canvas, cushions, covers, etc.

Complete interior refit throughout every room (including crew):

Remove elevator and expand owner foyer and rebuild stairwell to upper and lower decks

All overhead panels removed and recovered

New stonework with intricate marble designs using exotic materials

New Led lighting throughout the vessel and misc. new fixtures

New ebony wood veneer in guest s/r's and other locations throughout the interior

Refinish existing wood veneers to low gloss or satin finishes

New carpeting and flooring throughout

New window treatments, wall coverings and fixed seating fabrics

New A/C insulation throughout the interior (behind walls where accessible)

New air handlers throughout and replace duct work where accessible

New chillers for A/C

Replace and install 3 sets Washers/dryers

New galley appliances

New A/V systems and TV's throughout vessel including running new cabling, Sat HD TV,

New and updated Nav electronics and rebuild of nav consoles

Rebuild and service of Davits and Passerelle

Install new Naiad at rest speed stabilization system including fins and hydraulic packs

Install new Headhunter waste treatment system

Replace batteries

Service main engines and gensets. Rebuild 2 main gensets including electrical end

Renew exhaust systems from risers aft

FRASER

Service shore converter

New Cat tender with forward drop down and 3 new PWC's

Since 2010 GRADE I has undergone 3 significant yard periods for paint and misc. interior and exterior modifications. The 2018 refit was over 5 million in cost and supervised by her long tenured skipper, Kevin Klar (Kevin also skippered her from 2000 to 2005 as Big Play). During the refit, Destry Darr was hired as interior decorator and collaborated with her owners for executing their detailed renewal of the interior. No area of the boat was untouched.

Disclaimer

The company offers the details of this vessel in good faith but cannot guarantee or warrant the accuracy of this information nor warrant the condition of the vessel. A buyer should instruct his agents, or his surveyors, to investigate such details as the buyer desires validated. This vessel is offered subject to prior sale, price change or withdrawal without notice.

FRASER



AFT DECK

FRASER



AFT DECK (18)



AFT DECK



MAIN SALON (28)



MAIN SALON



MAIN SALON TV UP



MAIN SALON



FORMAL DINING



FORMAL DINING



MAIN FOYER



MASTER OFFICE



MASTER SUITE



MASTER SUITE



MASTER ENSUITE PORT



MASTER ENSUITE



LOWER GUEST FOYER



STBD FWD GUEST STATEROOM



GUEST ENSUITE



PORT FWD GUEST STATEROOM



GUEST ENSUITE



PORT MID TWIN STATEROOM



GUEST ENSUITE



PORT AFT GUEST STATEROOM



GUEST ENSUITE



STBD AFT GUEST STATEROOM

FRASER

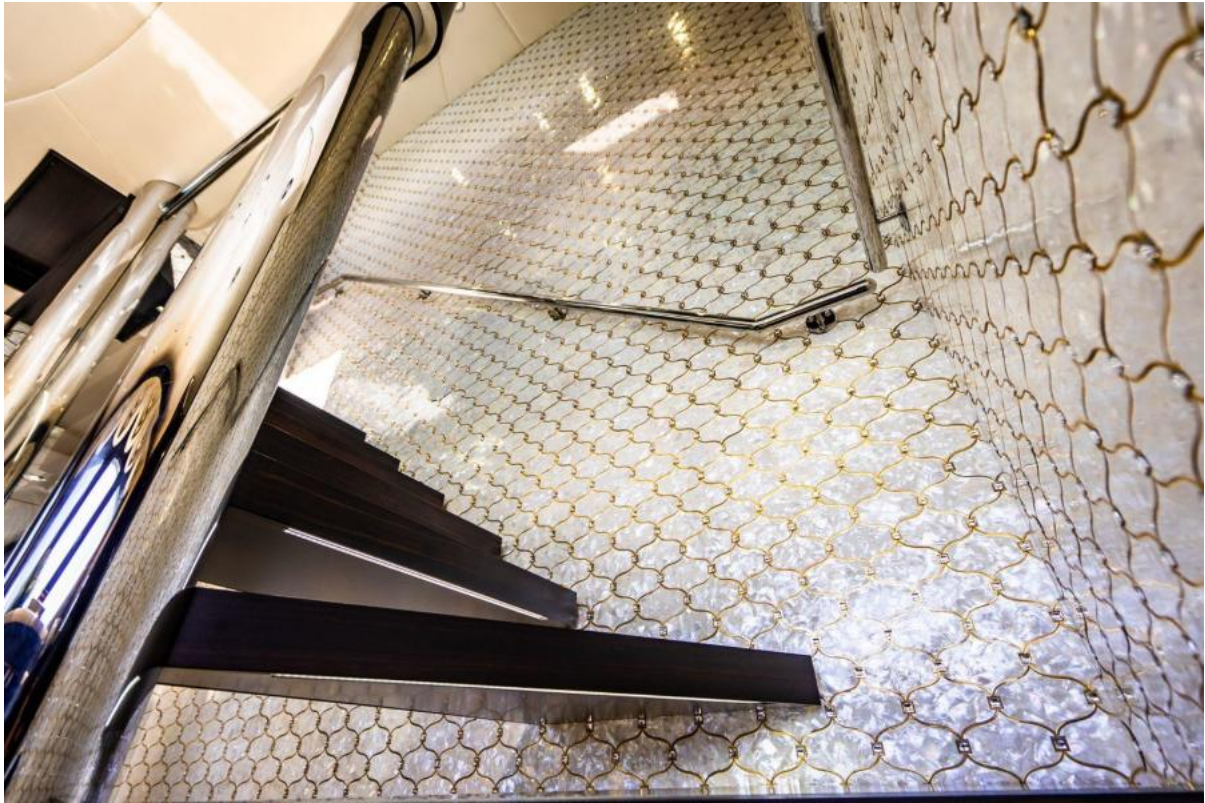


MAIN GUEST FOYER



GALLEY

FRASER



STAIRS TO BRIDGE DECK



WHEELHOUSE

FRASER



WHEELHOUSE



WHEELHOUSE



SKYLOUNGE



SKYLOUNGE



SKYLOUNGE BAR



BRIDGE DECK AFT

FRASER



BRIDGE DECK AFT DINING



BRIDGE DECK AFT

FRASER



BRIDGE DECK AFT



SUNDECK



SUNDECK BAR



SUNDECK BAR

FRASER



SUNDECK GRILL



SUNDECK HOT TUB

FRASER



SUNDECK



STBD SIDE DECK

FRASER



BOW



BOW

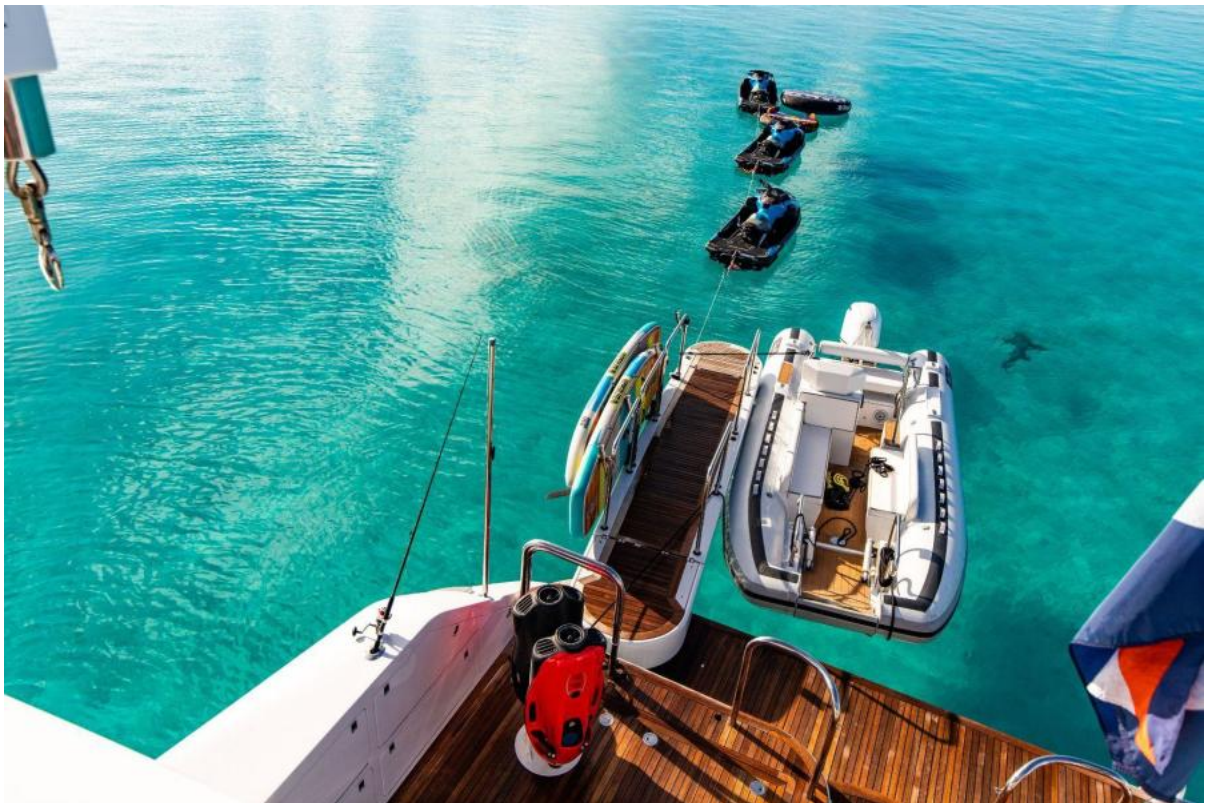
FRASER



FRASER



SWIM PLATFORM



SWIM PLATFORM / TOYS

FRASER

