



ANTARES

131' (40.00m) 2005 Royal Huisman Ketch Sailing Yacht
Palma de Mallorca Spain



OVERVIEW

Manufacturer:	<i>Royal Huisman</i>		
Engines:	1 Caterpillar	Hull Material:	Aluminum
Engine Model:	C18 ACERT	Cruise Speed:	11 Knots
Engine HP:	714.76	Max Speed:	12.5 Knots
Beam:	28' 9"	Cabins/Heads:	4 /
Max Draft:	13' 10"	Fuel Type:	Diesel
Water:	1074.39 G (4067 L)	Fuel:	4447.87 G (16837 L)

€11,500,000



Data Sheet

Category: Ketch	Crew Cabins: 3	Gross Tonnage: 218
Condition: Used	Captain's Quarters: Yes	Displacement: 211 tonnes
Model Year: 2005	Crew Sleeps: 6	Bow Thruster: Yes
Refit Year: 2020	Crew Mess: 1	Stern Thruster: Yes
Documented Year: 2005	Maximum Speed: 12.5 Knots	Fuel Tank: 4447.87 gal (16837 liters)
Beam: 28'9" (8.77m)	Cruise Speed: 11 Knots	Fresh Water: 1074.39 gal (4067 liters)
Max Draft: 13' 10" (4.22m)	Range NM: 3500	Holding Tank: 845.35 gal (3200 liters)
LOA: 131' 2" (40.00m)	Fuel Type: Diesel	Classification: Lloyds 100A1, SSC Yacht,
LWL: 110' 8" (33.75m)	Super Structure Material: Aluminum	Mono, G6, LMC, UMS
Cabins: 4	Hull Material: Aluminum	Imported: No
Sleeps: 9	Hull Shape: Monohull	Builder: Royal Huisman
Convertibles: 1	Air Conditioning: Yes	Designer: Dixon Yacht Designs
Pullmans: 1		Interior Designer: Dick ROUNG Design
Twin Berths: 1		Exterior Color: Navy
Double Berths: 1		HIN/IMO: WHY123456788
King Berths: 1		
Full Beam Master: Yes		

Engines/Generators

Engine 1

Caterpillar
C18 ACERT
Inboard
714.76HP
533KW
Fuel: Diesel
Hours: 2000
Hours Date: 04-12-2024
Year: 2012

Generator 1

Leroy Somer
LSA(M) 44.2 S7/4P
75KW
Hours: 18000
Hours Date: 04/12/2024

Generator 2

Leroy Somer
LSA 44.2 S/7/4P
75KW
Hours: 18000
Hours Date: 04/12/2024

Summary/Description

“Superb proven world cruising sailing yacht with versatile Ketch rig and 4 stateroom interior layout plus 6 crew. Immaculate condition with huge investment to all areas of the yacht over last 4 years. Fairly new teak decks, paint, sails, rigging, interior décor, and fittings as well as all mechanic

Launched by Royal Huisman Shipyard and designed by Bill Dixon, ANTARES has benefited from comprehensive upgrading and maintenance making her ready for extensive cruising. Having successfully served as a family exploration yacht in the S Pacific for the last years, she is now reluctantly offer for sale. ANTARES is the ideal cruising yacht with her versatile ketch rig and commodious four (4) stateroom interior, plus equipped with extensive diving equipment.

If you are wanting a world capable, top quality, ready to go sailing yacht, then ANTARES represents a unique and spectacular offering.

DETAILED SPECIFICATIONS

MAIN CHARACTERISTICS

Name: ANTARES

Type: Ketch Sailing Yacht

Builder: Royal Huisman Shipyard B.V, Vollenhove. Holland

Naval Architecture: Dixon Yacht Designs

Interior Designer: Dick Young Deisgns

Project Management: Patrick Yeoward

Year Delivered: May 2005

Refit Year(s): 2012 / 2018-2020 / 2022

Hull No: 379

LOA: 40.00 M 131' 03"

LWL: 33.75 M 110' 09"

Length COR: 36.57 M 120' 00"

Beam: 8.77 M 28' 09"

Draft incl. Keel: 4.22 M 13' 10"

Gross Tonnage: 218 tons

FRASER

Displacement: 211 tons / 518,086 lbs

Ballast: 59.63 tons / 131,461 lbs

Main Sail Area: 282 M² 3,035 FT²

Rig: Southern Spars & Gleistein Dyneema

Hull Material: Aluminum

Hull Configuration: Monohull

Superstructure: Aluminum

Decks: Teak

Flag: British

Classification: Lloyds 100A1, SSC Yacht, Mono, G6, LMC, UMS

*ANTARES has never operated commercially – only ever for private use.

MCA: Full compliance to MCA Large Yacht Code (LY2)

Main Engine: Caterpillar 6-cyl, 533kW / 715HP, C18 ACERT (New 2012)

Speed Under Power: 11.0 Knots / 12.5 Max – 2,000nm

Range: 3,500 nm @ 8 knots

Guest Accommodation: 8-10 Guests in 4 Staterooms

Crew Accommodation: 6 Crew in 3 Cabins

COMMENTS AND NOTEWORTHY FEATURES AT A GLANCE

Current ownership has family cruised ANTARES in the South Pacific regions for last five years and adapted the yacht to be redundant and robust for expedition style service.

- Superb Huisman quality and proven world cruising yacht
- Comfortable layout offering protected cockpit and four-stateroom plus six crew
- Immaculate condition with huge investment to all areas of the yacht over last years
- Several notable refits over the last years incl. full paint, sails, rigging, interior décor, fittings, and systems
- Massive spare parts and systems inventory

FRASER

CLASSIFICATION

Flag: United Kingdom

Port of Registry: Jersey

Classification: Member of IACS

IACS Society: Lloyds 100A1, SSC Yacht, Mono, G6, LMC, UMS

*ANTARES has never operated commercially – only ever for private use.

EU Tax Status: Not VAT Paid

CONSTRUCTION

- Aluminum hull, deck, superstructure & extrusions (Corus Alustar Temper H321 & H112)
- Painted navy-blue hull with gold cove line (complete repaint in 2022)
- White above decks superstructure (Complete repaint 2018)
- Teak laid decks, cockpit & swim platform (New teak decking in 2018)

CAPACITIES

Gross Tonnage: 218 tons

Net Tonnage: 65 tons

Displacement Tons: 211 tons

Fuel Capacity: 16,837 Litres 4,448 Gallons

Fresh Water Capacity: 4,067 Litres 1,074 Gallons

Water Makers (Per Day): 14,000 Litres 3,698 Gallons

Grey Water: 2,385 Litres 630 Gallons

Black Water: 981 Litres 259 Gallons

Day: 400 Litres 106 Gallons

Hydraulic Oil: 774 Litres 204 Gallons

Georges Bourgoignie GeorgesB@FraserYachts.com

1-305-491-2211

FRASER

Lubrication:	300	Litres	79	Gallons
Sludge: 300	Litres	79	Gallons	
Bilge: 470	Litres	124	Gallons	
Overflow:	925	Litres	244	Gallons

ACCOMMODATIONS

OVERVIEW:

ANTARES' subtly styled 1930's Art Deco interior is the work of internationally reputed designers Rhoades Young. The interior was thoroughly refitted in 2016 with contemporary upgrading, replacing all hardware and designing the interior for the purpose of extended world family cruising.

DECKHOUSE

The deckhouse is the main entrance to the yacht and one of the best features aboard ANTARES. 360-degree visibility afforded by large deckhouse windows. A unique feature is lowering glass panels that connect the deckhouse with the exterior central cockpit that creates a large and very sociable entertaining area with cocktail bar, large fridge & icemaker. The deckhouse is adorned with teak joinery and flooring complimenting the large sofas which surround a low teak coffee table. This table opens up and out to create a stunning dining table seating 12 persons.

The yacht's internal navigation, communications center and chart table as well as internal helm station is to starboard. Entering the yacht down a few steps from the Deckhouse and to Port is a large intimate saloon, featuring a large flatscreen television with surround sound. To starboard is the dining area with space to seat 8 persons. This dining area has been converted into a massive iPad workstation for family study and creativity.

ACCOMMODATIONS:

ANTARES can sleep nine guests in four staterooms; a double master cabin aft, double VIP cabin to port, a twin cabin stbd. (including option to fold down a Pullman berth) & a converting double cabin forward in the yacht's office/study. All guest cabins were fitted with new carpets & upholstery and hardware/fittings in 2016 and feature ensuite bathrooms & showers (including the office/4th cabin). Crew accommodation for 6 crew in 3 dedicated cabins, each with an ensuite.

MASTER STATEROOM

The master stateroom is accessed via a private entrance aft of the deckhouse and is one of the most desirable features and focal points of the yacht. It has a private deck entrance and is luxuriously decorated. Featuring a king-sized bed, a drinks fridge, a vanity table/writing desk, and an ensuite with twin sinks and marble surfaces, there is also plenty of wardrobe space and storage available.

FRASER

The three remaining guest cabins are all styled and finished to the same exceptional standard as the Master cabin with proper ventilation, A/C, and wardrobe / drawer space.

OFFICE / 4th STATEROOM:

Forward of the saloon is the large Owner's study / office. This private room has a fitted desk, computer, widescreen television and numerous book shelving. The L-shaped sofa can be converted into a large double bed plus a single pullman berth has been added to this cabin which also has a full ensuite head/shower.

GALLEY / CREW ACCOMMODATIONS

The galley on the yacht is centrally located and there is a crew companionway that leads forward. The crew mess includes a flat screen television, a raised dinette that can seat four people and laundry a Miele washer and dryer. The crew accommodation consists of a double Captain's cabin, and twin bunk cabins to port and starboard. Each crew cabin features an adjoining head and shower.

MAIN MACHINERY & ELECTRICITY

Main Engine: Caterpillar C18 ACERT 6-cyl, 533kW / 715HP (New 2012)

Hours (April 2024): 12,000 hours (had a full rebuild at 10,000 hours in 2022).

Consumption: 70 LPH / 18.5 GPH

Propulsion Type: Wärtsilä propulsion, 4CLF40AH, diam. 1200 mm, four blades with high skew

Gear Box: ZF 2150A, Angle down 10°, Reduction 3:1

New spare shaft in solid duplex plus new propeller in storage in Holland

Output/Electricity: 230/400 VAC - 50Hz 3 phase system

Power Management System : 1 x service battery bank (1500 Ah)

2 x starting battery banks, 1 x navigation battery bank

Generators: 2 x Generators MTU / Leroy Somer, LSA(M) 44.2 S7/4P (75kW each) Rebuilt in 2015. New cylinder heads in 2020, Injector Pumps 2022.

Hours (April 2024): 18,000 hours

Generator Consumption: 11.5 LPH / 3 GPH

AUXILIARY MACHINERY

FRASER

Steering System: Mechanically and hydraulically operated steering system

2 x outside steering positions

1 x inside steering position

Bow Thruster: Hundested FT 3 R hinged thruster, 75hp

Stern Thruster: Hundested FT 3 R hinged thruster, 75 hp

Fresh Water Makers: HEM 30/4000 modular, 14,000 LPD / 3,698 GPD, (4 membranes)

Hot Water Boilers: ACV remote water heater

Black/Grey Water Treatment: 1x Hamann Mini Compact Big

Air Conditioning: Heinen en Hopman climate control system Capacity: 216,000 BTU

3 x Marine Air chillers / Salor components AC System replaced in 2017

Air Compressor: Compressor unit: custom built RHS

Hydraulic System: Custom Bosch Rexroth / RHS manifold system

2 x PTO off the main engine

1 x PTO off each generator

NAVIGATION & COMMUNICATION SYSTEMS

NAVIGATION SYSTEMS

Navigation Bridge: B&G Hydra 5000 (speed, log, depth & wind)

Monitors: Glass top monitor screens operating TimeZero

Radar: Koden MDC 1810 radar (backs up Nobeltec)

Radar / Chart: TimeZero

Charts: Unlimited global charts run from four independent computers. One screen in the deckhouse & one each at the Stbd & Port helms plus crew mess

Admiralty Digital chart package

GPS / AIS: SIMRAD MX 612 (new 2020)

Gyro Compass: Alphantron Minicourse V3 Gyro (2018) and LT500 Fluxgate (New 2024)

Navtex Receiver: Furuno NX-500

SAT Com F: Thrane & Thrane FX and Fleet Broadband

FRASER

SAT Com C: Sailor H2095 C & Stalink Marine 1 TB system (New 2023)

VHF/UHF: ICOM GM 600 & Sailor RT4801

SSB: Nasa HF-4E Receiver

Iridium Transeiver: 2 X Iridium 9555 Handheld Sat Phones

Ship Monitoring: Schneider Ships 'Alarm Monitoring System' @ 4 x stations (engine room, deckhouse, crew mess & helm) allowing complete monitoring of the ships onboard systems. Also remotely accessed by Royal Huisman shipyard.

Wi-Fi: Wireless aerial on mast to pick up shore wireless supply

4G: 4G Antenna on mast for mobile internet

SAILS & RIGGING

Rig: Southern Spars carbon masts & booms

Mainsail & Mizzen are fitted with Southern Spars in-boom furling

Fore Mast Dimensions: L = 44.45m / 97.995ft

P = 40.41m / 89.0891ft

E = 11.66m / 25.706ft

J = 13.11m / 28.903ft

Mizzen Mast Dimensions: L = 31.64m / 69.75ft

P = 27.51m / 60.65ft

E = 7.91m / 17.44ft

Sails: All sails new 2018 - NORTH 3Di

Mainsail fully battened

Reacher

Staysail

Sails 2022 - North 3Di Ocean:

Georges Bourgoignie GeorgesB@FraserYachts.com

1-305-491-2211

FRASER

Mainsail with full battens

Blade (jib)

Sail area: Main sail: 282 m² / 3,035 ft²

Mizzen sail: 131 m² / 1,410 ft²

Reacher: 389 m² / 4,187 ft²

Jib: 253 m² / 2,723 ft²

Staysail: 85 m² / 915 ft²

Rigging: 2018 – New SS rigging fitted

Backstays, runners & the inner forestay are hydraulically tensioned by Rondal rams or Rondal underdeck captive winches (all controlled at the helm)

DECK MACHINERY & EQUIPMENT

Deck Gear: Custom deck gear by Rondal (hydraulic vang, backstay rams, blocks, tracks etc)

Rondal Headsail furlers

Rondal deck hatches (with electronic lift & close mechanisms)

Stainless steel Rondal reel & drum winches

Various deck lockers port & stbd for bosun, deck gear fenders etc.

Ground Tackle: 2 x 500 lbs CQR bow anchors permanently stowed on the bow

2 x 31.3 kgs Fortress FX125 stern anchor

2 x 155 metres of anchor chain w/ chain counters at windlass

2 x Steen 23-09 electrical anchor winches & SS capstans above deck

Winches: 2 x main mast runners

2 x controlling Port & Stbd Reacher sheets

FRASER

2 x controlling Port & Stbd Jib sheets

2 x controlling Port & Stbd Mainsail sheets

1 x for Mainsail halyard

1 x for Mizzen sail sheet

Crane: Akerboom (1250kg) hydraulic deck crane stored under deck. Providing a smooth and easy launch

Passerelle / Side Gangway: Yacht Tec Hydraulic operated side boarding gangway on stbd side. Teak steps & stainless-steel handrails

SAFETY EQUIPMENT

All deck safety equipment serviced annually

Fixed Firefighting System: Novec 1230 extinguisher for engine room

Firefighting Equipment: Sea water fire extinguishing system on deck

Life Rafts: 2 x Zodiac 16 pers life rafts stored either side of the main mast. Hydrostatically released hatches w/2 x Zodiac 8 man liferafts on pushpits port and starboard/

2 x Jon Buoy recovery module (pushpit mounted)

Life Rings: 2 x liferings connected to Comet light & smoke signal recovery lines (pushpit mounted)

EPIRB: 1 x Fixed ACR EPIRB – Hydrostatically released from pushpit

1 x handheld EPIRB

SART: x 2

Medical Equipment: A1 commercial medical kit MSOS plus NUVO Oxygen generator

GALLEY & LAUNDRY EQUIPMENT

MAIN GALLEY EQUIPMENT

Gaggenau 5 ring Induction hob

Gaggenau Electric oven

Extractor fan above

Combination Miele Microwave Oven

Georges Bourgoignie GeorgesB@FraserYachts.com

1-305-491-2211

FRASER

Extensive cold storage and freezers custom built Rovasta/RHS

Volume fridges approx. 1,209 l

Volume freezers approx. 896 l

Drop down breakfast bar access aft to guest dining area

2 x Ice Makers in Galley and Pilothouse

LAUNDRY

Miele Washing Machine

Miele Dryer

TENDERS & TOYS

Tenders: 2019 Smuggler Strata 600 Rib w/ Yamaha 130 hp

2022 Zobiac Cadet 350 w/ Yamaha 15 hp

Dive Equipment: 2018 High-Capacity Nitrox System

Bauer Mariner 320 dive compressor

Nuvair LP 300 Nitrox Generator

16 x dive bottles

MAJOR REFIT ITEMS SINCE 2017 - IN ADDITION TO STANDARD MAINTENANCE

2023

Starlink 1 TB Marine high-power antenna

Watermaker New Membranes

Cathodic Protection MME system replaced

Dive & O2 Tanks Hydrostatic testing

Furuno Radar (FAR 1518) RF tray replaced

Furuno network radar New magnetron

Nav computers 4 new nav computers

Georges Bourgoignie GeorgesB@FraserYachts.com

1-305-491-2211

FRASER

Tender Completely re-wired, new steering and engine controls.

2022

Rig Refit New rods & fittings

Masts, booms painted

New mandrels & furler motors

Sails New main and Jib (North 3di Ocean)

Hull Topsides full repaint

Varnish all varnish on deck, cap rail wooded

Haul out (Brisbane) Intermediate survey, rudder & thrusters inspection, antifouling

Prop and shaft Removed, NDT tested, stern tube inspected

Lloyds Surveys Bottom, Shaft & Prop

Main Engine 10 000 hour service. A full engine rebuild including: cylinder head replaced, pistons, liners, rings, bearings, torsional coupling, new turbo

Electrical New emergency battery chargers installed.

Generators serviced Injector pumps rebuilt

Tanks Water tanks painted, diesel tanks cleaned

VSAT Antenna service, new control unit

Anchor system windlasses & motors serviced

anchors and chains regalanised

Bow rollers, arms removed and serviced

Tender Bottom gelcoat, electronics updated

Outboards serviced, new covers

new 3.5m crew tender

Interior New washer dryer installed

2021

Aircon / Refrigeration system overall, Crew area airconditioning upgraded.

Bauer HP dive compressor Full rebuild.

FRASER

I.T. New wifi routers throughout the boat

Engineering Spare shaft and propeller purchased.

Spare hydraulic pump for sailing systems purchased.

New fire detection alarm panel installed

2020

Generators 10,000-hour service

New cylinder heads installed

injectors

engine mounts, heat exchangers, coolant pump

turbo rebuild

Hydraulics system service & flush, various hoses changed

Electronics upgrades simrad autopilot CPU

new Sat C unit, Icom VHF

New Iridium handheld phones

B&G updates

Haulout (Singapore) Antifouling

4 through hull valves replaced.

2019

Tender New Smuggler 6m and 130hp Outboard

Lloyds Survey 5 yr Special survey, bottom, tailshaft

Electric system Inspection and mega load test (survey)

Tanks Keel tanks, blasted, painted, surveyed

water tanks, inspected, painted

diesel tanks inspected, cleaned

Anchor system full service, chain lengthened

Haulout (Brisbane) 5-year special survey, antifouling, rudder, Prop & shaft pulled for survey, Exhaust gas overboard standpipes replaced.

FRASER

Through hulls All through hull valves removed, standpipes shot blasted then coated with a high-quality corrosion resistant coating.

Pneumatics New air compressors and reservoirs installed

Hydraulics Hydraulic cylinders overhauled - both vangs, all four backstays,
Titanium core installed in main hydraulic oil cooler.

2018

Decks New Teak

Superstructure full repaint

Dive compressor New Bauer dive compressor, Nitrox and O2 generators

Hailout (Auckland) Antifouling, rudder, prop & shaft, thrusters

New propshaft P bracket installed

Propeller pitch oil injection box and thrust bearing fully stripped and serviced.

Steering cylinders rebuilt

Electronics

New screens at helm stations, engine room

New Alphanatron Gyro

B&G upgrades

New Furuno radar (2nd radar)

Hatch seals

All air seal replaced - owners hatch, transom door,

pasarelle, side ladder, crew hatch

Rigs Main mast removed and serviced

Sails New full set - Main, Mizzen, Jib, Reacher

2017

Aircon Chiller plant and electrical control cabinet replaced

Electronics

FRASER

New furuno network radar

New B&G Hydra 5000 system installed

New autopilot CPU and displays

New Magnus shore power converter installed

Ships emergency batteries replaced

New VSAT antenna and controls installed

New monitoring cameras installed on deck and in engine room.

All new computers installed for alarm and monitoring and navigation.

Engineering

All sea water pumps replaced and complete spares carried onboard.

Bilge pump replaced with upgraded type.

New steering power pack installed and frequency drive

New watermaker and membranes installed and a complete spare unit carried onboard.

New silver ion and UV water treatment units installed

Hamman sewage treatment plant fully serviced and all pumps replaced.

Cathodic protection

Installed a MME marine growth prevention system

Audio visual system

New Sonos and Apple TV integrated system installed.

Generators

New local operating panels installed

Interior

New washing machines and dryer installed

Camera table / Pulman berth in study / extra storage unit in galley roof / crew beds widened / crew area floors replaced / headlinings replaced / Saloon redesigned... / All mattresses replaced

FRASER

Deck New spinaker pole

Two extra liferafts added to pushpit.

PLC's Over the years numerous modifications have been made to the PLC programming on all systems onboard to improve, streamline and make Antares safer to operate.

Significant investment was spent on refitting, maintenance and upgrading since 2016 when current owner purchased her. Additionally, a vast array of spare parts are stored at Huisman Shipyard in Holland to allow seamless service while she cruised the Pacific over the last years.

DISCLAIMER

NOT AVAILABLE FOR SALE OR CHARTER TO U.S RESIDENTS WHILE IN U.S. WATERS

All speeds, capacities, consumption, etc. are approximate or estimated; measurements can also be approximate. Specifications are provided for information only and particulars herein obtained from sources believed to be correct but are not guaranteed. Buyer should instruct his agent and/or surveyor to check all details for accuracy. Offered subject to prior sale, price and/or inventory change, or withdrawal from the market without notification.

FRASER



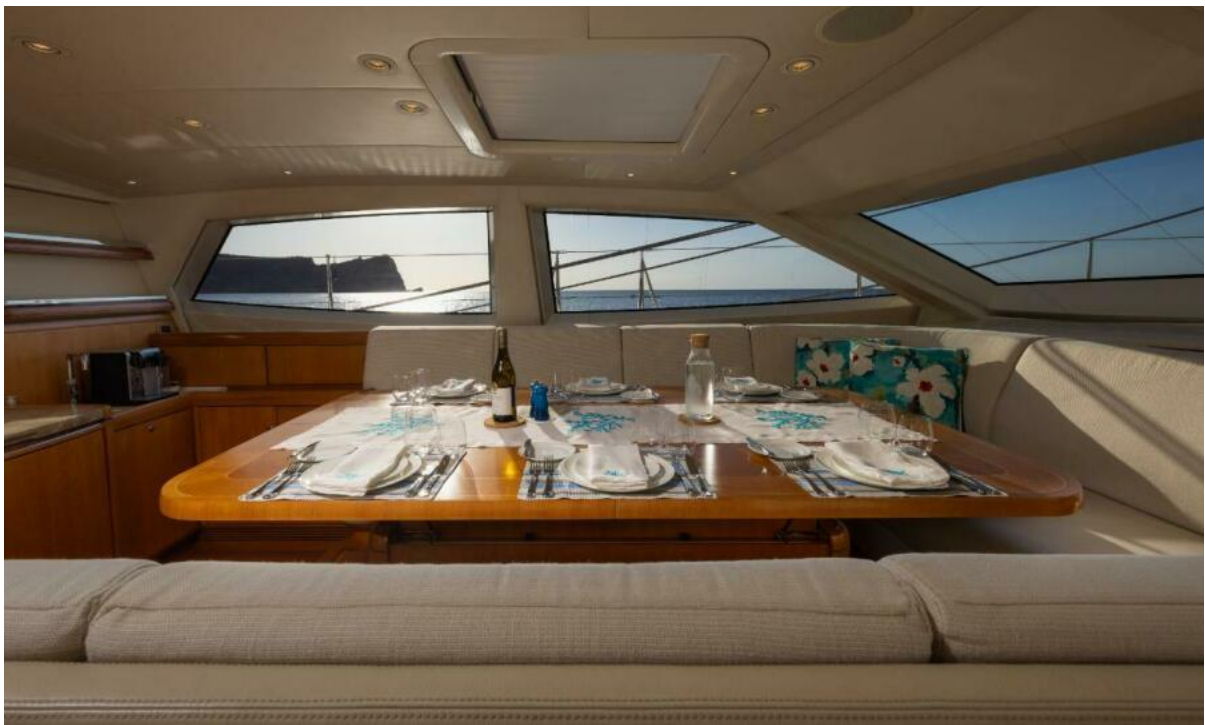
FRASER



FRASER



FRASER



FRASER



FRASER



FRASER



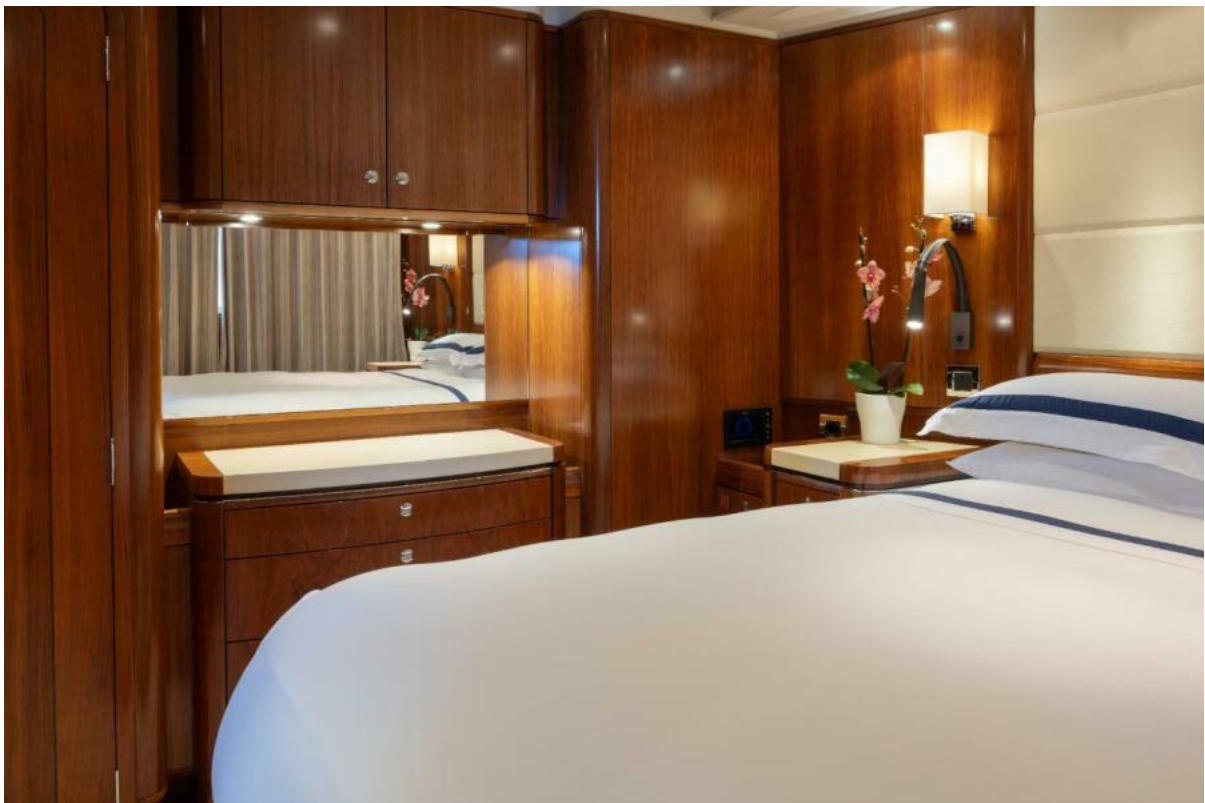
FRASER



FRASER



FRASER





FRASER



FRASER



FRASER



FRASER



FRASER



FRASER



FRASER



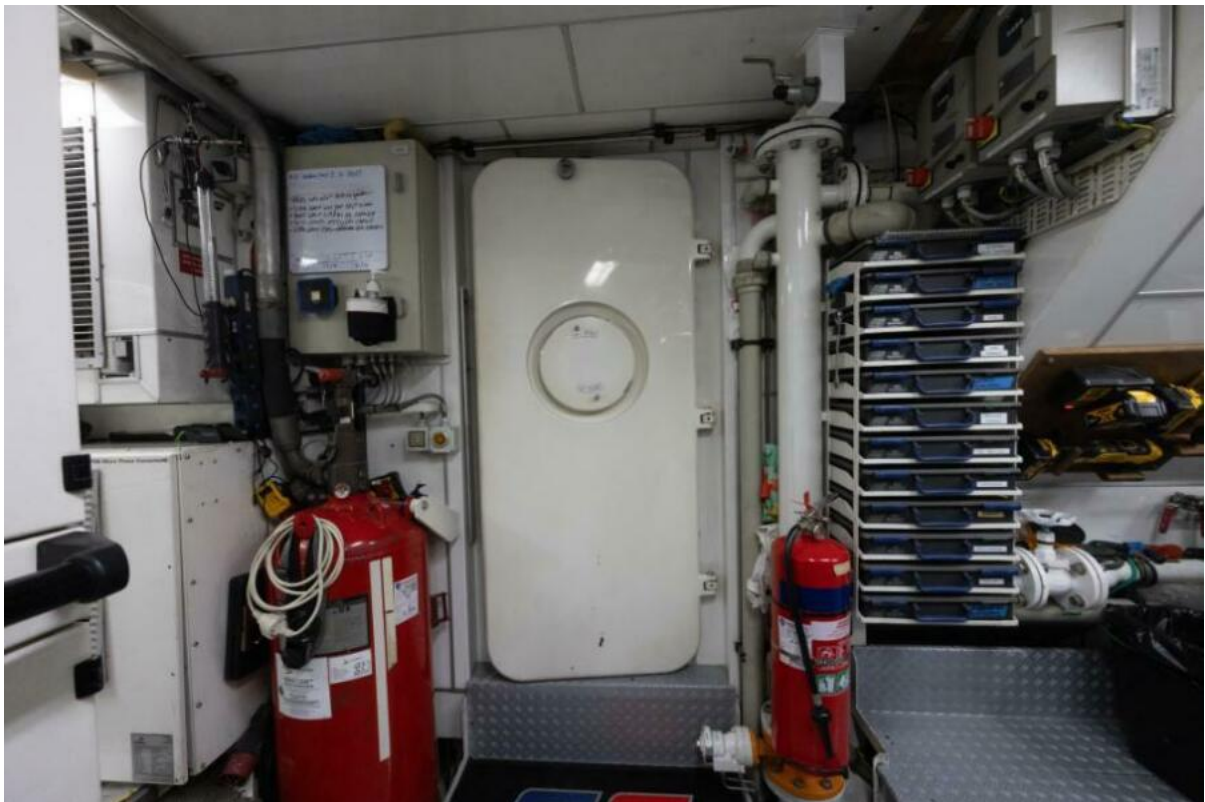
FRASER



FRASER



FRASER



FRASER



FRASER



FRASER



FRASER



FRASER



FRASER



FRASER



FRASER



FRASER



FRASER



FRASER

