



## MOUSETRAP

110' (33.52m) 2012 JFA  
West Palm Beach Florida United States



### OVERVIEW

Manufacturer:	JFA	Hull Material:	Carbon Fiber
Engines:	2 Cummins	Cruise Speed:	10 Knots
Engine Model:	QSB 5.9-M, 4T, 6 Cyl	Max Speed:	12 Knots
Engine HP:	355	Cabins/Heads:	4 /
Beam:	46' 1"	Fuel Type:	Diesel
Max Draft:	7' 10"	Fuel:	2213.76 G (8380 L)
Water:	3600 G (13627.48 L)		

€17,950,000



Georges Bourgoignie GeorgesB@FraserYachts.com

1-305-491-2211

## Data Sheet

Category: Catamaran	Crew Cabins: 4	Gross Tonnage: 240
Condition: Used	Captain's Quarters: Yes	Displacement: 120 tonnes
Model Year: 2012	Crew Sleeps: 6	Bow Thruster: Yes
Refit Year: 2023	Crew Mess: 1	Fuel Tank: 2213.76 gal (8380 liters)
Documented Year: 2012	Maximum Speed: 12 Knots	Fresh Water: 3600 gal (13627.48 liters)
Beam: 46'1" (14.05m)	Cruise Speed: 10 Knots	Holding Tank: 528.34 gal (2000 liters)
Max Draft: 7' 10" (2.40m)	Fuel Type: Diesel	Classification: Bureau Veritas - I ✕ HULL
LOA: 110' (33.53m)	Super Structure Material: Carbon	• MACH
Cabins: 4	Composite	Builder: JFA Yachts - Concarneau, France
Sleeps: 9	Hull Material: Carbon Fiber	Designer: VPLP Design
Pullmans: 1	Hull Shape: Catamaran	Interior Designer: Cittolin Polli
Double Berths: 4	Air Conditioning: Yes	Exterior Color: Grey/Silver
		HIN/IMO: WHY123456789

## Engines/Generators

### Engine 1

Cummins  
QSB 5.9-M, 4T, 6 Cyl  
Inboard  
355HP  
264.72KW  
Fuel: Diesel  
Hours: 2500  
Hours Date: 02-19-2024  
Year: 2022  
Location: Port

### Generator 1

Cummins  
Onan MDDCG  
50KW  
Hours: 14500  
Hours Date: 02/19/2024

### Engine 2

Cummins  
QSB 5.9-M, 4T, 6 Cyl  
Inboard  
355HP  
264.72KW  
Fuel: Diesel  
Hours: 2500  
Hours Date: 02-19-2024  
Year: 2022  
Location: Starboard

### Generator 2

Cummins  
Onan MDDCG  
50KW  
Hours: 14500  
Hours Date: 02/19/2024

# FRASER

## Summary/Description

The largest Carbon sailing Catamaran in the world designed by internationally renowned naval architect VPLP Design and built as a fully custom project by JFA shipyard. "MOUSETRAP" was purposefully and meticulously designed and built by a tech entrepreneur for world exploration with his family. Her

The largest Carbon sailing Catamaran in the world designed by internationally renowned naval architect VPLP Design and built as a fully custom project by JFA shipyard. "MOUSETRAP" was purposefully and meticulously designed and built by a tech entrepreneur for world exploration with his family. Her impressive dimensions and fastidious "as new" condition make "MOUSETRAP" the best large sailing catamaran available today!

**Seriously for sale and offers are encouraged!**

## DETAILED SPECIFICATIONS

### MAIN CHARACTERISTICS

Name: MOUSETRAP

Type: Sailing Catamaran

Builder: JFA Yachts, France

Year Built: 2012

Refit: Refit 2021-2023

LOA: 33.52M 110'

Beam: 14.05M 46'

Draft: 2.4M 8'

Gross Tonnage: 240 GT

Displacement (Fully Loaded): 120 GT

Hull Material: Carbon Fiber/ Monolithic below waterline and closed cell foam sandwich laminate above waterline.

Decks: Teak

Flag: Cayman Islands

Classification: Bureau Veritas (BV) / 10 year Class Recertification Nov. 2023

Exterior Designer: VPLP Design

---

Georges Bourgoignie GeorgesB@FraserYachts.com

---

1-305-491-2211

# FRASER

Interior Designer: Cittolin Polli & Associés SA

Main Engines: 2 x Cummins QSB 5.9-M, 4T, 6 CYL 355HP/265kW

Max Speed: 12 Knots

Cruising Speed: 10 Knots

Guest Accommodations: 8-9 guests in 4 staterooms

Crew Accommodations: 6 crew in 3 cabins

## NOTEWORTHY FEATURES AT A GLANCE

- World's largest Carbon fiber cruising sailing Catamaran.
- Massive living spaces equalling over 4000 square feet with 248 GT.
- Designed for & by notable Tech entrepreneur with exacting expectations.
- Proven performance, comfort, and safety during 6-year family Pacific / Atlantic cruise.
- 2021-2023 refit including all areas of the yacht systems, machinery, and cosmetics.
- Innovative load sensor technology & renewed PLC systems
- Accommodations for 8/9 guests in four comfortable queen ensuite staterooms plus Pullmans
- Comfortable Crew accommodations for 6 Crew in 4 cabins
- Latest PLC network on board & high-speed Starlink Marine internet and 5G connectivity.
- Vast open deck areas incl. custom Jacuzzi on foredeck plus large flybridge and aft deck areas
- Bureau Veritas class compliance recertified in 2023 – always private but commercially compliant
- Southern Spars carbon mast & boom new in 2016 and fully serviced in 2022
- EC6 Carbon rigging new in 2016 and recertified (10 year) in 2023

## CAPACITIES

Gross Tonnage: 240 GT

Displacement: 120 GT

Fuel Capacity: 8,380 L / 951 Gal (plus 2 bladders = 4,240 L / 1,120 Gal )

Fresh Water Capacity: 3,600 L / 951 Gal

---

Georges Bourgoignie    GeorgesB@FraserYachts.com

1-305-491-2211

# FRASER

Water Makers: 2 X 600 LPH / 158 GPH 15,200 LPD / 4,015 GPD

Black Water: 2,000 L / 528 Gal

Clean Oil: 200 L / 53 Gal

Dirty Oil: 200 L / 53 Gal

Slop Tanks 900 L / 238 Gal

## LIVING SPACE AREAS

Saloon: 65 sqm 700 sqft

Aft Deck: 95 sqm 1022 sqft

Flybridge: 43 sqm 463 sqft

## ACCOMMODATION

Massive cruising platform with the comparative space of much larger Monohull yachts. Huge interior and exterior living spaces in her 110' LOA x 46' beam on 3 decks. During a recent sail from Antigua to the Cayman Islands, I was impressed by her stable comfort inside while sailing along at 15-20 knots in steady Caribbean trades. No heeling or pitching motion as well as being remarkably quiet underway.

The overall condition of the interior of MOUSETRAP is superb. The owner's design brief was for a fast yet luxurious and comfortable family cruising yacht which meant light displacement construction in carbon fiber and carrying through to the cored joinery on the interior.

Additionally, Bureau Veritas oversaw the class compliance requirements. BV class was renewed in 2023 and she could also now be coded as a commercial vessel. Potentially a very desirable charter yacht given her space, stability, draft and condition. The yacht's enormous exterior enjoyment areas include a huge aft deck with dining & lounging areas plus full 4K cinema, foredeck accessed through the main saloon with a custom sunken Jacuzzi and additional lounging areas and a flybridge with 465 sqft of space for lounging / dining and full ship's controls port and starboard.

WALKTHROUGH: AFT DECK: Boarding MOUSETRAP from her generous deployable stern platforms on either side and up 4 steps to a massive 1022 sqft aft deck area which encompasses the entire 46' beam and has generous lounge seating on 2 settees forward plus an 8/10 seated dining table aft. Access up to the Flybridge is from both port and starboard sides of the aft deck. Renewed audio-visual system with retractable cinema screen and surround sound system turn the aft deck into a home cinema. climate control misting system for the entire aft deck area

# FRASER

**SALOON:** The aft deck communicates into the main saloon through large motion activated sliding doors spanning 10 feet when open. The huge main saloon space with uninterrupted views forward over the foredeck. Circulation from the aft deck through the saloon and onto the foredeck is all on one level with no tripping points. The main saloon and dining areas are a generous 700 sq ft overall and divided in 4 sections while remaining an open plan design and offering views on 180 degrees in the saloon as well as over the aft deck.

Aft on port side is the ships office area with a work desk and all communications and computer services as well as stairs down to the owner's stateroom. Opposite on starboard is a large bar and crew service area with access down to the galley and crew accommodations. The forward section of the saloon is the lounging area to port with a very comfortable "L" shaped wrap around sofa allowing views out while seated. A 60" 4K TV is deployable forward of the settee with full surround sound. A dining table and seating for 8/10 on the starboard side. There is access down to a day head on the starboard forward side of the saloon.

The interior saloon is extended out to the foredeck through a watertight, class approved door amidships in the saloon offering lounging areas and a custom jacuzzi outside to port on the foredeck. This allows uninterrupted views and ventilation through the yacht from the foredeck to the aft deck through the interior.

There is a full helm / piloting station in the Main Saloon forward and to starboard with views out of the foredeck

**ACCOMMODATIONS:** Four (4) generously appointed ensuite owner and guest double ensuite staterooms- with 3 guest staterooms in the port hull and 1 in the starboard hull forward.

The Owner's accommodation has a private stairway down from the ships office area and includes a generous double stateroom aft in the port hull with queen berth, ensuite his/her head area and shower room. The 2 double guest staterooms also in the port hull are accessed downstairs from forward saloon to port and a fourth guest double guest stateroom is situated in the starboard hull forward and access downstairs from the saloon to starboard. All owner and guest staterooms are generously appointed and have more than 7' headroom, large hull portlights allowing views out, and ensuite head and showers in all staterooms. Natural and forced ventilation. State of the art audio visual systems. Ample hanging and drawer storage. The décor is inviting and tranquil while also being luxuriously detailed using woods and earth tone materials. Natural Teak decks cover the entire exterior and were renewed 100% in New Zealand in 2021. Interior floors are a rich wood finish throughout. Crew covers are provided for all interior spaces to retain the excellent condition.

**CREW ACCOMMODATIONS:** Three (3) crew cabins are in the starboard hull and arranged as 2 double cabins plus a single captain's cabin with oversized berth. There is an additional single crew cabin FWD for possible total of 6/7 crew. The Crew mess is opposite the well provisioned commercial grade Galley located in the starboard hull aft. Fixed Portlights in the hull allow light and views into all accommodations aboard.

## MAIN MACHINERY

# FRASER

Twin engine rooms with redundant systems:

Main Engines: 2 x Cummins QSB 5.9-M, 4T, 6 CYL (355HP/265kW each)

Jan. 2022 - New factory Remanufactured engines installed.

Dec 2023 -Servicing (2000-hour service)

Engine Hours (Feb. 2024): Port: 2,500 approx. hours Starboard: 2500 approx. hours

Gear Boxes: 2 x Twin Disk MG-5075A Gearboxes (Factory serviced Jan 2022)

Propellers: 2 x Brunton's 4-Blade folding (New Dec. 2023)

Drive system: 70mm SS Shafts BV certified (out and serviced in 2023) through cutlass bearings.

## GENERATORS & ELECTRICITY

Output/Electricity: 440V/220V AC Power – 24V DC Power

Generators: 2 x Cummins Onan MDDCG (2x 50kW)

New Jan 2020 / Full rebuild Jan. 2022 / Full-service Dec. 2023

Generator Hours (Feb. 2024): Port: 14,500 hours | Starboard: 14,500 hours (4,500 since rebuild)

Shore Power: Magnus SP100 50kVA Shore Power Converter (fully serviced August 2023)

Batteries: 420 Ahr Service – 450 Ahr Emergency – 2 x 110 Ahr Starting Batteries

All AGM Gel type

Chargers: 5 x Mastervolt Battery chargers

Inverters: Mastervolt AC Master 24/2500

## ANCILLARY EQUIPMENT

Steering System: 3 Total : 2 x flybridge helm stations port and starboard with duplicated systems either side. Full sail and machinery controls and computer access to yachts systems. Helms offer comfortable seating with articulating canvas covered sun and weather protection.

Additional helm station in the saloon forward which is recessed into joinery when not in use.

1 x Complete helm station in the saloon forward

FBS Hydronic upgraded March 2023 with various feedback systems

Fuel Separators & Filters: Alfa Laval IB 303S Fuel Polisher & Facet MV BT37 Fuel Filter System

Georges Bourgoignie GeorgesB@FraserYachts.com

1-305-491-2211



# FRASER

Bilge & Fire System: 2 x 400V Gianneschi ACB 431 Bilge Pumps

2 x Engine-driven Forani & Pecorari B-40 Bilge Pumps

Seperate Forani & Pecorari B-40 Fire pump

Emergency Electric Fire Pump system IFP 112MB-2

Sewage Treatment Systems: Headhunter TW-HMX-512LP

WC's: 7 x Tecma Privilege

Air-Conditioning: Dometic MCGX216 (019) 3 Stage YM 3 X Chiller Plants (New 2022)

16 X Dometic Air Handlers w Heating function (New 2021)

Ventilation: 2 x Heinen & Hopman Makeup Air Units

## NAVIGATION SYSTEMS

Radars: 1 x Simrad Radar 36 miles

1 x B&G 36 miles

Chart Plotter: B&G Zeus Screens and Time Zero MaxSea PCs

Gyrocompass: HS70 B&G

Auto Pilot: B&G Including Adrena Sail Software

Echo Sounder 2 X B&G DST810 & 2 X DST200 (Depth Speed Temperature Transducers)

Log Timezero & HS000 B&G

GPS: HS70 B&G GPS

Navtex: B&G H5000

Wind Instruments: 2 x B&G MHU & AT+ Wind Speed Unit

## COMMUNICATION SYSTEMS

SAT com: 2 x Starlink Maritime Antennas (new Jan 2023)

---

Georges Bourgoignie GeorgesB@FraserYachts.com

---

1-305-491-2211



# FRASER

Download speed max 220 Mbps Peak

Upload speeds 25 Mbps

Cellular System: 3 x cellular interfaces for connectivity redundancy (5G, LTE-A, and dual LTE w/ amplifier)

Wi-Fi: 13 x Wi-Fi 6 Access Points for onboard Wi-Fi (New Oct 2022)

VHF Radiotelephones: SIMRAD RS100 with 3 X handsets

8 X Handheld VHF ICOM

Telephone Exchange: VOIP UK Number with Soft phone Integration (New 2023)

## DECK MACHINERY & EQUIPMENT

Anchor Windlass System: 2 x Muir VR 8000 Vertical Windlass

Aft Warping Capstans: 2 x Muir Winch System

Ground Tackle: 170m Starboard & 170m Port 17.5mm chain (All new chain 2022)

Boat Crane & Davits: Custom Hydraulic Tender Davit System

Swim Platform: Custom large Swim Platform with Hydraulic Float Function

Passerelle: Custom removable Carbon Passerelle

Side Boarding Ladder: Custom Carbon Boarding Ladder

Jacuzzi: Selectable 6, 12, or 18kW elements for quick heating (1 hour heat time)

Awning: Custom Palma Loft Boom awning and Helm Awnings

Cockpit Glass: Polycarbonate glass windows

Underwater Lights: Sea Vision SV-20 HID

## SAFETY, SECURITY, & FIRE FIGHTING EQUIPMENT

Safety: 4 x 8 Passenger Life rafts

---

Georges Bourgoignie GeorgesB@FraserYachts.com

---

1-305-491-2211

# FRASER

Alarms: Apollo Fire System - Marinelec Athena Central Fire System

Fire Fighting: 2 x Full Firefighting suits

2 x SCBA suits & 4 X breathing tanks

NOVEC2000 Fire Suppression System

Security: CCTV system with 10 x cameras throughout vessel

## ENTERTAINMENT, AUDIO/VISUAL

VIDEO: 6 x 1080P Samsung TVs plus 1 X 60" 4K Samsung TXV in saloon integrated with Crestron custom infotainment system with Plex Media Server providing video and audio throughout the vessel all refitted in 2023.

Additional 4K home theatre system on aft deck with retractable projector and 2m x 1.2m retractable screen

AUDIO: High end sound system throughout the vessel with DJ plug-in option with speakers in the interior and on aft deck and flybridge. Sub woofers in the saloon with 12 x surround sound speakers. All staterooms have TVs and access to Plex Media survey updated in 2022.

## DOMESTIC EQUIPMENT

Galley Equipment: Miele Steam Oven DGC 6805,

Siemens VB558C0S0 Oven,

Frigomar Refrigeration System,

2 x undersole Freezers,

4 x Fridges & Wine Fridge

## TENDERS & TOYS

Guest Tender: Custom 6.3m (20.7ft) X-Tender

Material: Carbon Fiber hull with RIB

Engine: 168HP Cummins QSD 2.0 Diesel with Mercury Bravo leg

# FRASER

Max speed: 36kts

Crew Tender: Custom 5m (16.4ft) Southern Pacific Tender

Material: Aluminum hull with RIB

Engine: 50HP Yamaha 2-stroke outboard

Diving Equipment: 10 x Scuba tanks

7 x BCDs

Onboard air compressor

Snorkel & freediving equipment

Watersports Equipment:

Fliteboard AIR eFoil Series 2.2 (NEW Aug 2022)

2 x Flitecell Explore Batteries

1 x Flitecell Premium 25A Charger

Wakeboard, skis, tubes and foilboard, 2 x wingfoils, 5 x inflatable paddleboards & fishing gear.

2022 Cabrinha kiteboarding gear (6m, 8m, 9m, 10m, & 12m kites)

3 x kiteboards, 2 x bars

## SAILS AND MAST

Spars: Southern Spars new carbon high modulus mast and boom new 2016

Material: Carbon fiber

Furling Gear: Reckman hydraulic furling systems x 3 (Solent, Staysail, ORC)

All new in 2016 and serviced April 2023.

SOLENT Reckman

CZ-64-S CUSTOM

Swivel - Reckman TS-64-L

STAYSAIL

Reckman

UD-5SCTC CUSTOM

Swivel - Reckman TS-50-L

ORC

Reckman

RF90-3 RTTC.

Swivel - Karver KF20

Sail Wardrobe: North Sails 3Di OCEAN (New 2021-2022)

---

Georges Bourgoignie GeorgesB@FraserYachts.com

---

1-305-491-2211

# FRASER

Mainsail: 295 m2 (reefing to 249m2, 193m2, or 130m2) (2022)

Code Zero: 480 m2

Staysail: 159 m2

ORC (Storm Jib): 64 m2

Spinnaker: 800 m2

Storm Spinnaker: 600 m2

Sails storage Rack carbon over starboard trampoline (new 2022)

Running Rigging: New 2022 and constantly serviced

## STORAGE

2 x 40-foot Maritime freight containers (located in La Ciotat, France)

Container 1: Fitted out with work benches and workshop/boat spares parts and all tools for yard periods

Container 2: Standing cradles to support the boat on the hard plus slings X 3 for lifting points for hauling out with mast removed.

X-Tender dinghy road trailer

## REFIT HISTORY & COMMENTS

The owner has enjoyed cruising MOUSETRAP to the Pacific OCEAN: from New Zealand to Alaska and many point between for over 6 years. Her current Captain is a long-time professional sailor and 5-time America's Cup veteran with 10 years aboard MOUSETRAP. As such, MOUSETRAP has constantly been updated to make her a more dependable and enjoyable long-range yacht by her owner and long-time crew. Since 2021 she has been extensively refreshed and refit 2021-23 with new machinery, decks, paint, sails, systems, and many details. The owner's mandate was to always keep her in new yacht condition and offer her to the market as a virtually new yacht. Upon personal inspection, MOUSETRAP shows as close to a new yacht as possible but with the considerable benefit of having been tested, tweaked, and improved by her capable and experienced owner and crew over those last years. As one of the only modern large sailing Catamarans worldwide, MOUSETRAP is available now for a value well under replacement cost and without the extensive build period.

## NOTABLE MAINTENANCE MILESTONES

- Bureau Veritas 10 years class certification in December 2023 valid through 2028.
- Mast replaced in 2016 Southern Spar carbon mast and boom fully serviced in 2022.

---

Georges Bourgoignie    GeorgesB@FraserYachts.com

1-305-491-2211

# FRASER

- EC6 Carbon standing rigging was new also in 2016 and recertified in 2023 for 10 years.
- Newly installed Cummins remanufactured engines (same model as original) installed in January 2022
- Newly installed Cummins generators (2) in January 2020 (both fully rebuilt in Jan 2022 @ 10K hrs and fully serviced Dec. 2023)
- New teak installed in February 2021 / 13mm thickness with caulking serviced Dec 2023
- Complete repainting of topsides and superstructure in February 2021
- 7 North Sails of which 6 were new in 2022, fully serviced in 2023
- Constant upgrades to electronics and Audio-Visual systems for “state of the art”
- Annual service and shipyard periods
- Marine Starlink dual antenna system
- Interior reconditioned over the years and lastly in 2023
- All Saloon glass was ceramic coated in 2023
- Entire yacht exterior Ceramic coated 2023

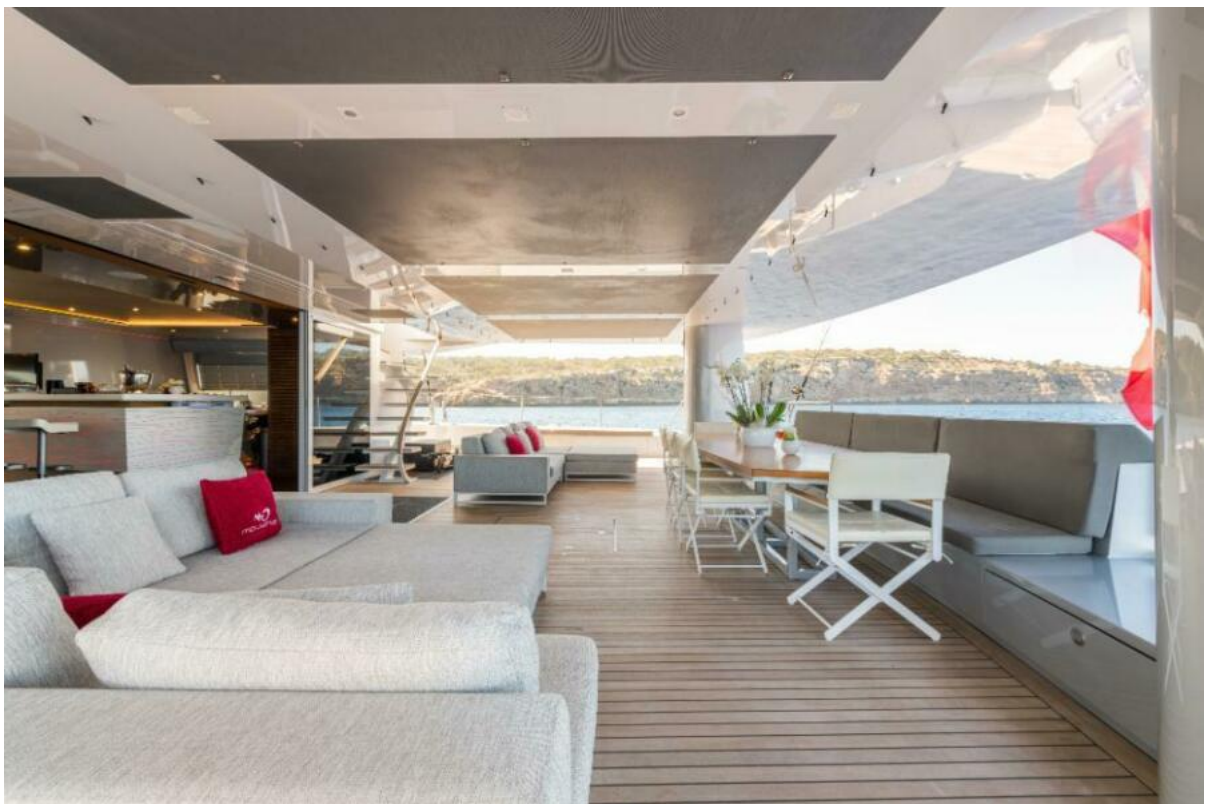
MOUSETRAP has had an open check book maintenance program since new and benefitted from several major refits as she has cruised worldwide. Notable refits in New Zealand in 2021, San Diego 2022, and Barcelona 2023 where she was Bureau Veritas 10-year class recertified. In January 2024 she just completed a full haul out period with complete bottom paint striping and reapplication. Designed and equipped for world cruising with redundant systems and a vast array of spare parts.

## DISCLAIMER

NOT AVAILABLE FOR SALE OR CHARTER TO U.S RESIDENTS WHILE IN U.S. WATERS

These particulars have been prepared by us from information provided by the sellers and are intended as a general guide to the vessel. We cannot, however, be liable for any inaccuracy. It is up to the purchaser to confirm details of concern to him by survey, inspection and/or enquiry of the seller and to ensure that the purchase contract properly reflects his concern and specific details upon which he may rely. We always advise an independent survey.

# FRASER

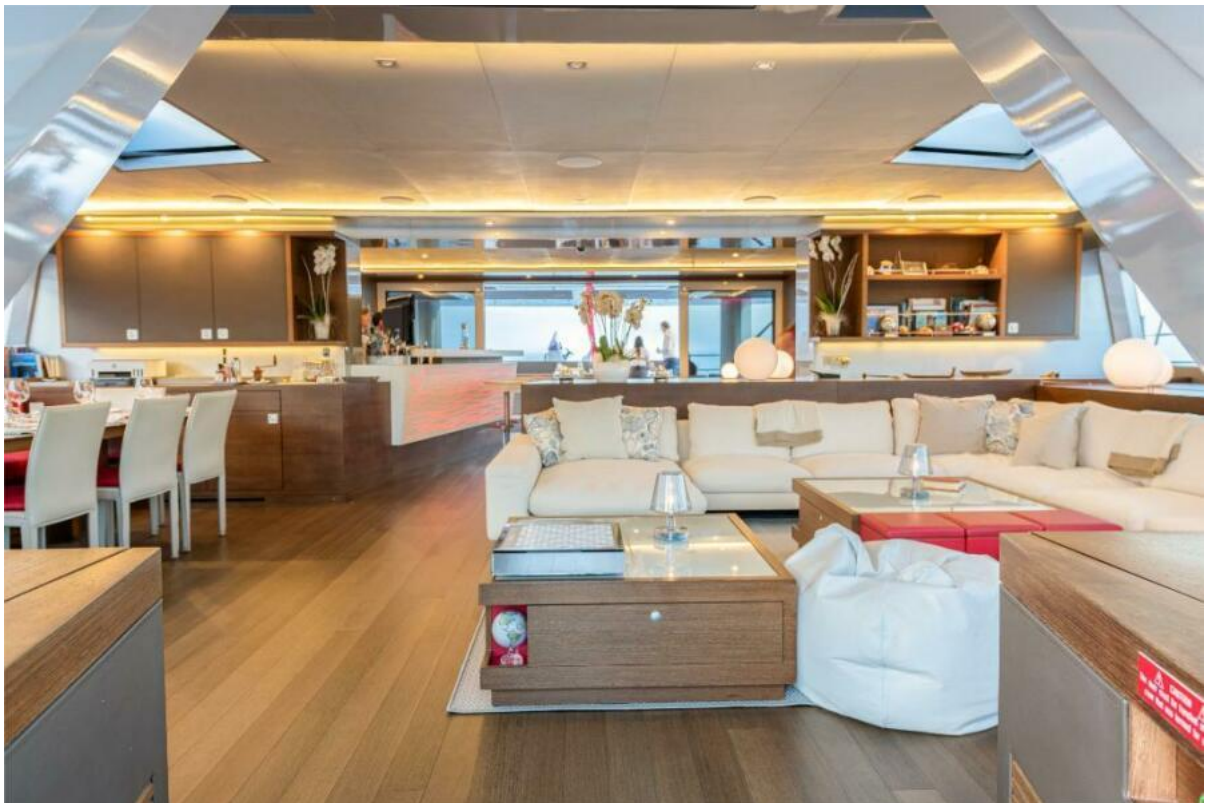


AFT DECK





AFT DECK



MAIN SALOON



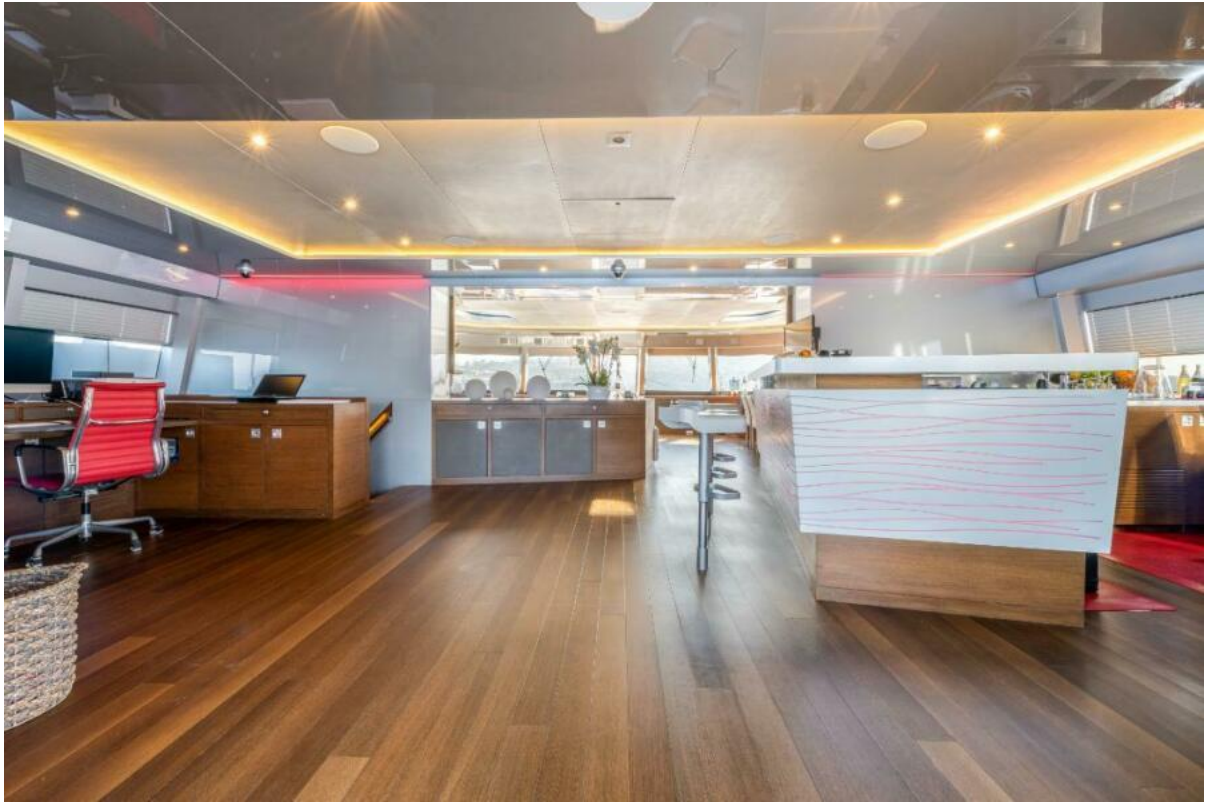


MAIN SALOON DINING



MAIN SALOON BAR

# FRASER



MAIN SALOON



SALOON OFFICE



# FRASER



SALOON NAVIGATION AND ENTERTAINMENT



SALOON NAVIGATION



# FRASER



LOWER PORT GUEST FOYER



MASTER STATEROOM



MASTER ENSUITE



PORT MIDSHIP GUEST STATEROOM





PORT STATEROOM WITH PULLMAN



MIDSHIP STATEROOM ENSUITE



PORT FORWARD STATEROOM



PORT FORWARD ENSUITE





STARBOARD FORWARD STATEROOM



GALLEY / CREW MESS



GALLEY



CAPTAIN'S CABIN





CREW CABIN



ENGINE ROOM



ENGINE ROOM



STARBOARD SWIM PLATFORM AND STORAGE GARAGE



# FRASER



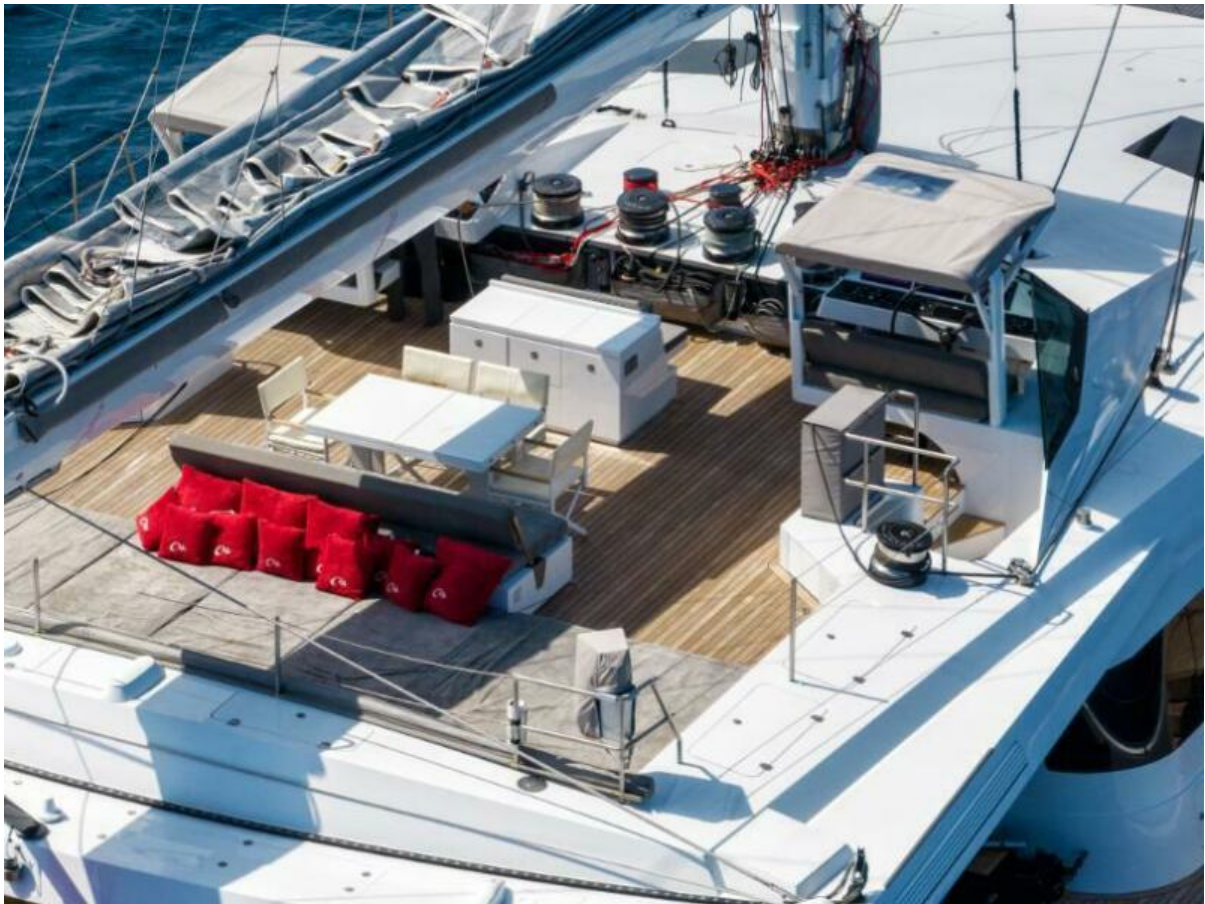


# FRASER





# FRASER





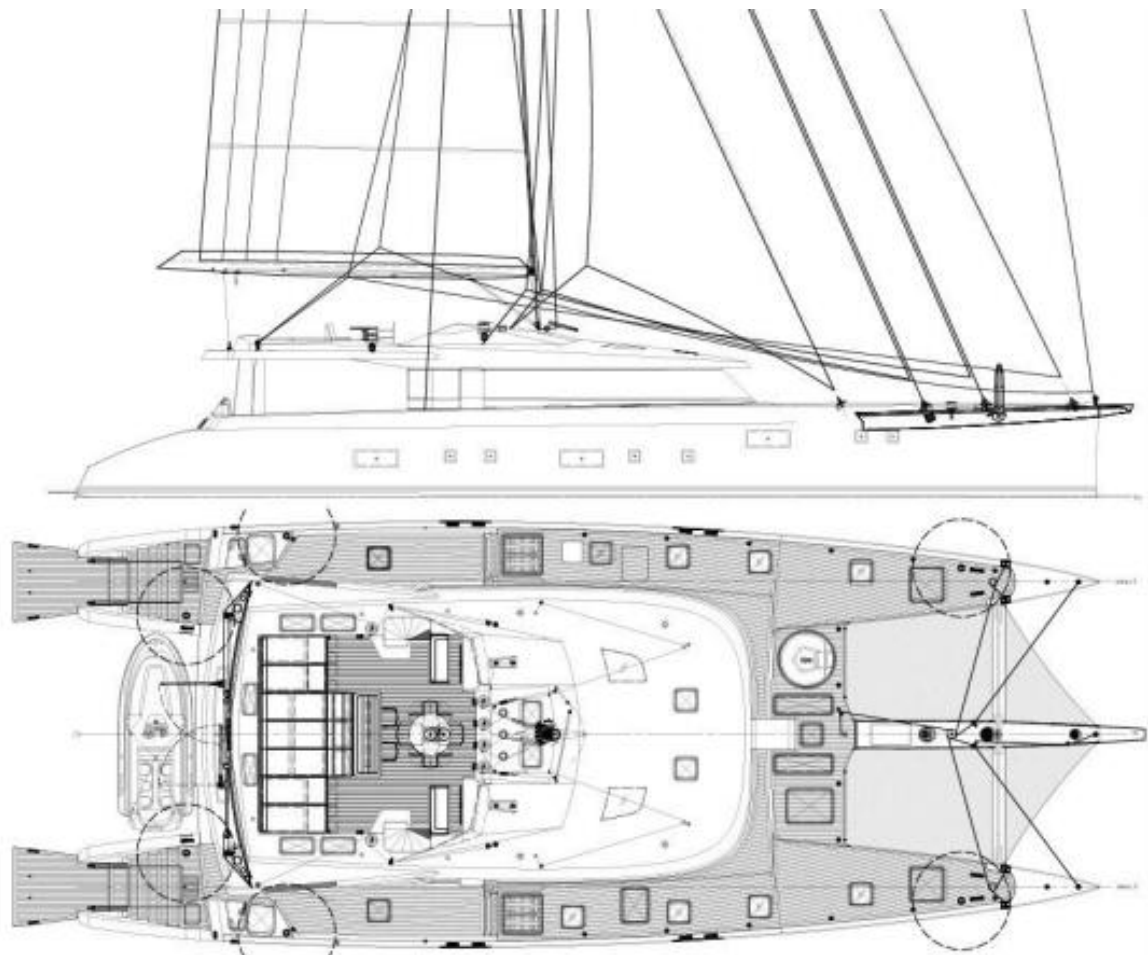
# FRASER





# FRASER





## YACHT CHARACTERISTICS

PERSONAL CHARACTERISTICS		MEASUREMENTS	
LENGTH OVERALL	33.00 m	WATER FULL WEIGHT	22.0 mt
WATERLINE LENGTH	27.00 m	WATER WEIGHT #1	100 mt
BEAM	10.00 m	WATER WEIGHT #2	100 mt
DECK	3.00 m	WATER WEIGHT #3	100 mt
WALL DRAFT	1.20 m	WATER WEIGHT #4	100 mt
WATERLINE DRAFT (MAX)	1.00 m	WATER WEIGHT #5	100 mt
WATERLINE DRAFT (MIN)	1.00 m	WATER WEIGHT #6	100 mt
WATERLINE DRAFT (MAX)	1.00 m	WATER WEIGHT #7	100 mt
WATERLINE DRAFT (MIN)	1.00 m	WATER WEIGHT #8	100 mt
WATERLINE DRAFT (MAX)	1.00 m	WATER WEIGHT #9	100 mt
WATERLINE DRAFT (MIN)	1.00 m	WATER WEIGHT #10	100 mt
WATERLINE DRAFT (MAX)	1.00 m	WATER WEIGHT #11	100 mt
WATERLINE DRAFT (MIN)	1.00 m	WATER WEIGHT #12	100 mt
WATERLINE DRAFT (MAX)	1.00 m	WATER WEIGHT #13	100 mt
WATERLINE DRAFT (MIN)	1.00 m	WATER WEIGHT #14	100 mt
WATERLINE DRAFT (MAX)	1.00 m	WATER WEIGHT #15	100 mt
WATERLINE DRAFT (MIN)	1.00 m	WATER WEIGHT #16	100 mt
WATERLINE DRAFT (MAX)	1.00 m	WATER WEIGHT #17	100 mt
WATERLINE DRAFT (MIN)	1.00 m	WATER WEIGHT #18	100 mt
WATERLINE DRAFT (MAX)	1.00 m	WATER WEIGHT #19	100 mt
WATERLINE DRAFT (MIN)	1.00 m	WATER WEIGHT #20	100 mt
WATERLINE DRAFT (MAX)	1.00 m	WATER WEIGHT #21	100 mt
WATERLINE DRAFT (MIN)	1.00 m	WATER WEIGHT #22	100 mt
WATERLINE DRAFT (MAX)	1.00 m	WATER WEIGHT #23	100 mt
WATERLINE DRAFT (MIN)	1.00 m	WATER WEIGHT #24	100 mt
WATERLINE DRAFT (MAX)	1.00 m	WATER WEIGHT #25	100 mt
WATERLINE DRAFT (MIN)	1.00 m	WATER WEIGHT #26	100 mt
WATERLINE DRAFT (MAX)	1.00 m	WATER WEIGHT #27	100 mt
WATERLINE DRAFT (MIN)	1.00 m	WATER WEIGHT #28	100 mt
WATERLINE DRAFT (MAX)	1.00 m	WATER WEIGHT #29	100 mt
WATERLINE DRAFT (MIN)	1.00 m	WATER WEIGHT #30	100 mt
WATERLINE DRAFT (MAX)	1.00 m	WATER WEIGHT #31	100 mt
WATERLINE DRAFT (MIN)	1.00 m	WATER WEIGHT #32	100 mt
WATERLINE DRAFT (MAX)	1.00 m	WATER WEIGHT #33	100 mt
WATERLINE DRAFT (MIN)	1.00 m	WATER WEIGHT #34	100 mt
WATERLINE DRAFT (MAX)	1.00 m	WATER WEIGHT #35	100 mt
WATERLINE DRAFT (MIN)	1.00 m	WATER WEIGHT #36	100 mt
WATERLINE DRAFT (MAX)	1.00 m	WATER WEIGHT #37	100 mt
WATERLINE DRAFT (MIN)	1.00 m	WATER WEIGHT #38	100 mt
WATERLINE DRAFT (MAX)	1.00 m	WATER WEIGHT #39	100 mt
WATERLINE DRAFT (MIN)	1.00 m	WATER WEIGHT #40	100 mt
WATERLINE DRAFT (MAX)	1.00 m	WATER WEIGHT #41	100 mt
WATERLINE DRAFT (MIN)	1.00 m	WATER WEIGHT #42	100 mt
WATERLINE DRAFT (MAX)	1.00 m	WATER WEIGHT #43	100 mt
WATERLINE DRAFT (MIN)	1.00 m	WATER WEIGHT #44	100 mt
WATERLINE DRAFT (MAX)	1.00 m	WATER WEIGHT #45	100 mt
WATERLINE DRAFT (MIN)	1.00 m	WATER WEIGHT #46	100 mt
WATERLINE DRAFT (MAX)	1.00 m	WATER WEIGHT #47	100 mt
WATERLINE DRAFT (MIN)	1.00 m	WATER WEIGHT #48	100 mt
WATERLINE DRAFT (MAX)	1.00 m	WATER WEIGHT #49	100 mt
WATERLINE DRAFT (MIN)	1.00 m	WATER WEIGHT #50	100 mt
WATERLINE DRAFT (MAX)	1.00 m	WATER WEIGHT #51	100 mt
WATERLINE DRAFT (MIN)	1.00 m	WATER WEIGHT #52	100 mt
WATERLINE DRAFT (MAX)	1.00 m	WATER WEIGHT #53	100 mt
WATERLINE DRAFT (MIN)	1.00 m	WATER WEIGHT #54	100 mt
WATERLINE DRAFT (MAX)	1.00 m	WATER WEIGHT #55	100 mt
WATERLINE DRAFT (MIN)	1.00 m	WATER WEIGHT #56	100 mt
WATERLINE DRAFT (MAX)	1.00 m	WATER WEIGHT #57	100 mt
WATERLINE DRAFT (MIN)	1.00 m	WATER WEIGHT #58	100 mt
WATERLINE DRAFT (MAX)	1.00 m	WATER WEIGHT #59	100 mt
WATERLINE DRAFT (MIN)	1.00 m	WATER WEIGHT #60	100 mt
WATERLINE DRAFT (MAX)	1.00 m	WATER WEIGHT #61	100 mt
WATERLINE DRAFT (MIN)	1.00 m	WATER WEIGHT #62	100 mt
WATERLINE DRAFT (MAX)	1.00 m	WATER WEIGHT #63	100 mt
WATERLINE DRAFT (MIN)	1.00 m	WATER WEIGHT #64	100 mt
WATERLINE DRAFT (MAX)	1.00 m	WATER WEIGHT #65	100 mt
WATERLINE DRAFT (MIN)	1.00 m	WATER WEIGHT #66	100 mt
WATERLINE DRAFT (MAX)	1.00 m	WATER WEIGHT #67	100 mt
WATERLINE DRAFT (MIN)	1.00 m	WATER WEIGHT #68	100 mt
WATERLINE DRAFT (MAX)	1.00 m	WATER WEIGHT #69	100 mt
WATERLINE DRAFT (MIN)	1.00 m	WATER WEIGHT #70	100 mt
WATERLINE DRAFT (MAX)	1.00 m	WATER WEIGHT #71	100 mt
WATERLINE DRAFT (MIN)	1.00 m	WATER WEIGHT #72	100 mt
WATERLINE DRAFT (MAX)	1.00 m	WATER WEIGHT #73	100 mt
WATERLINE DRAFT (MIN)	1.00 m	WATER WEIGHT #74	100 mt
WATERLINE DRAFT (MAX)	1.00 m	WATER WEIGHT #75	100 mt
WATERLINE DRAFT (MIN)	1.00 m	WATER WEIGHT #76	100 mt
WATERLINE DRAFT (MAX)	1.00 m	WATER WEIGHT #77	100 mt
WATERLINE DRAFT (MIN)	1.00 m	WATER WEIGHT #78	100 mt
WATERLINE DRAFT (MAX)	1.00 m	WATER WEIGHT #79	100 mt
WATERLINE DRAFT (MIN)	1.00 m	WATER WEIGHT #80	100 mt
WATERLINE DRAFT (MAX)	1.00 m	WATER WEIGHT #81	100 mt
WATERLINE DRAFT (MIN)	1.00 m	WATER WEIGHT #82	100 mt
WATERLINE DRAFT (MAX)	1.00 m	WATER WEIGHT #83	100 mt
WATERLINE DRAFT (MIN)	1.00 m	WATER WEIGHT #84	100 mt
WATERLINE DRAFT (MAX)	1.00 m	WATER WEIGHT #85	100 mt
WATERLINE DRAFT (MIN)	1.00 m	WATER WEIGHT #86	100 mt
WATERLINE DRAFT (MAX)	1.00 m	WATER WEIGHT #87	100 mt
WATERLINE DRAFT (MIN)	1.00 m	WATER WEIGHT #88	100 mt
WATERLINE DRAFT (MAX)	1.00 m	WATER WEIGHT #89	100 mt
WATERLINE DRAFT (MIN)	1.00 m	WATER WEIGHT #90	100 mt
WATERLINE DRAFT (MAX)	1.00 m	WATER WEIGHT #91	100 mt
WATERLINE DRAFT (MIN)	1.00 m	WATER WEIGHT #92	100 mt
WATERLINE DRAFT (MAX)	1.00 m	WATER WEIGHT #93	100 mt
WATERLINE DRAFT (MIN)	1.00 m	WATER WEIGHT #94	100 mt
WATERLINE DRAFT (MAX)	1.00 m	WATER WEIGHT #95	100 mt
WATERLINE DRAFT (MIN)	1.00 m	WATER WEIGHT #96	100 mt
WATERLINE DRAFT (MAX)	1.00 m	WATER WEIGHT #97	100 mt
WATERLINE DRAFT (MIN)	1.00 m	WATER WEIGHT #98	100 mt
WATERLINE DRAFT (MAX)	1.00 m	WATER WEIGHT #99	100 mt
WATERLINE DRAFT (MIN)	1.00 m	WATER WEIGHT #100	100 mt

08	Cape cabin in fore peak STD	GR	16/02/16
07	General update + nouveau GA By	GR	04/10/09
06	General update	PAG	05/06/09
Rev	Comments	Author	Date
<div style="display: flex; justify-content: space-between; align-items: center;"> <div> <b>Van Peteghem</b> YACHT         </div> <div> </div> <div> <b>Leuriot Prévost</b> DESIGN         </div> </div>			
<div style="display: flex; justify-content: space-between;"> <div>           11, BOULEVARD BOURDON 75004 PARIS - FRANCE TEL : 33 1 42 77 34 00 - FAX : 33 1 48 04 88 80         </div> <div> <a href="mailto:leuriot@vplp.fr">leuriot@vplp.fr</a> <a href="http://www.vplp.fr">www.vplp.fr</a> </div> <div>           PARC DU SOLEIL - 8, ALLEE LOIC GARAGEC 56000 VANNES - FRANCE TEL : 33 2 97 44 74 10 - FAX : 33 2 97 48 54 50         </div> </div>			
Date	25/03/16	Client	Dimensions in mm
Drawn by	Gouffaine REY	Scale	1:125
Project	VPLP 110		
Drawing name	GENERAL ARRANGEMENT		
Rev	00-2220	Revision n°	Rev. 08



