



DOZER

98' (30.00m) 1993 Queenship Custom
San Diego California United States



OVERVIEW

\$3,350,000

Manufacturer:	Queenship	Hull Material:	GRP
Engines:	2 CATERPILLAR	Cruise Speed:	10 Knots
Engine Model:	3406 BTAG	Max Speed:	13 Knots
Engine HP:	540	Cabins/Heads:	4 /
Beam:	24' 4"	Fuel Type:	Diesel
Max Draft:	5' 11"	Fuel:	
Water:			



FRASER

Data Sheet

Category: Motor Yachts
Condition: Used
Model Year: 1993
Refit Year: 2020
Documented Year: 1993
Beam: 24'4" (7.42m)
Max Draft: 5' 11" (1.80m)
LOA: 98' (29.87m)
LWL: 88' 7" (27.00m)
Cabins: 4
Sleeps: 8
Double Berths: 2
Queen Berths: 1
King Berths: 1
Full Beam Master: Yes

Crew Cabins: 1
Crew Sleeps: 2
Crew Mess: 1
Maximum Speed: 13 Knots
Cruise Speed: 10 Knots
Range NM: 2500
Fuel Type: Diesel
Super Structure Material: GRP
Hull Material: GRP
Hull Shape: Displacement
Hull Finish: AWLGRIP
Air Conditioning: Yes

Gross Tonnage: 163
Stabilizers: Standard
Bow Thruster: Yes
Classification: Private
MCA Certified: No
Builder: Cooper Queenship
Interior Designer: Morse Design
Exterior Color: White
HIN/IMO: CEL98001H292

Engines/Generators

Engine 1

CATERPILLAR
3406 BTAG
Inboard
540HP
402.68KW
Fuel: Diesel
Hours: 6473
Hours Date: 10-01-2023
Location: Port

Engine 2

CATERPILLAR
3406 BTAG
Inboard
540HP
402.68KW
Fuel: Diesel
Hours: 6475
Hours Date: 10-01-2023
Location: Starboard

Generator 1

Northern Lights
Model # M984W.3 (PORT)
33KW
Hours: 9995
Hours Date: 10/01/2023

Generator 2

Northern Lights
Model # M984W.3 (STBD)
33KW
Hours: 10300
Hours Date: 10/01/2023

FRASER

Summary/Description

DOZER is an elegant, displacement motor yacht built in composite by the pedigree Queenship yard in Vancouver BC, Canada. She has a timeless classic interior with huge volume allowing 4 double ensuite staterooms plus ample crew accommodations. A capable and efficient family cruising yacht with a ma

DOZER is an elegant, displacement motor yacht built in composite by the pedigree Queenship yard in Vancouver BC, Canada. She has a timeless classic interior with huge volume allowing 4 double ensuite staterooms plus ample crew accommodations. A capable and efficient family cruising yacht with a magnificent country kitchen and classic salon and formal bar areas plus a huge engine room for ease of maintenance. Low maintenance requirements for owner - operators. Substantially refitted at Delta Marine - Seattle in 2020. Proven capable, comfortable, and safe from Alaska to Mexico and points beyond!

Detailed Specifications

MAIN CHARACTERISTICS

Name: DOZER (Ex. Aku Aku, Sea Owl, Terry Lea, Reminisce)

Type: Motor Yacht

Builder: Cooper Queenship

Year: 1993

Refit Year: 2020

LOA (M/FT): 29.87 M 98' 00"

LWL (M/FT): 27.00 M 88' 07"

Beam Overall (M/FT): 7.41 M 24' 04"

Draft (M/FT): 1.80 M 5' 11"

Gross Tonnage: 163 GT ITC - 141 GRT

Hull Material: GRP

Hull Configuration: Displacement

Superstructure: GRP

Decks: Teak

Flag: USA

Classification: Private

Naval Architect: Seaton Designs

Georges Bourgoignie GeorgesB@FraserYachts.com

1-305-491-2211

FRASER

Exterior Designer: David J. Mohns

Interior Designer: Morse Design

Main Engines: 2 x Caterpillar 3406 1,080hp (540hp each)

Speeds: 13.0 Knots Max

10.0 Knots Cruising

Range: 2,500 nm @ 10 kn

Guest Accommodation: 8 guests in 4 staterooms – 1 master, 1 double, 2 twin

Crew Accommodation: 2 crew in 1 cabin

EXPERT'S VIEW

DOZER is an elegant, displacement motor yacht built in composite by the pedigree Queenship yard in Vancouver BC, Canada. She has a timeless classic interior with huge volume allowing 4 double ensuite staterooms plus ample crew accommodations. A capable and efficient family cruising yacht with a magnificent country kitchen and classic salon and formal bar areas plus a huge engine room for ease of maintenance. Low maintenance requirements for owner – operators. Substantially refitted at Delta Marine – Seattle in 2020. Proven capable, comfortable, and safe from Alaska to Mexico and points beyond!

NOTEWORTHY FEATURES AT A GLANCE

PEDIGREE CANADIAN COMPOSITE BUILDER

FULLY REFITTED IN 2019-2020 AT DELTA MARINE

LARGE 4-STATEROOM PLUS CREW LAYOUT

'COUNTRY KITCHEN' STYLE GALLEY

PROVEN CAPABLE AND COMFORTABLE FAMILY CRUISING YACHT

CLASSIFICATION

Flag: USA

Port of Registry: Seattle, WA

Classification: Non - IACS

Georges Bourgoignie GeorgesB@FraserYachts.com

1-305-491-2211

FRASER

US Tax Status: Duty Paid

HIN: CEL98001H292

MMSI Number: 338102084

Official Registration: 995007

Ice Class: No

CONSTRUCTION

Hull Material: GRP

Superstructure Material: GRP

Decks Material: Teak Decks by Teak Decking Company, Tampa (2012)

Paint: Awlgrip HDT 2019

Motor Hull Type: Mono-hull

Motor Hull Sub Type: Semi-displacement

Number of Decks: 2 above waterline

2019/2020 FULL REFIT

Entire yacht re-painted, topsides and superstructure, at Delta Marine Yard

All Thru Hulls Replaced

New Jastram Steering System

Full Interior Modernized Refit (All Hard and Soft Goods Replaced)

New Port/Starboard Anchor Chain Galvanized (330 Feet)

All Air Handlers Replaced

New Seawater Pump and Circulating Pump

New stainless-Steel Staples on the Swim Deck with 2 Sea Kayak Holders

Davit Rebuilt

Windlass Rebuilt

Brand New Canvas Throughout Entire Boat

Georges Bourgoignie GeorgesB@FraserYachts.com

1-305-491-2211

FRASER

All air handlers replaced

ACCOMMODATIONS

Master Stateroom:

This master suite is accessed via circular stairway from the main salon and is the full beam of the vessel. Special features include: his & her bathrooms with marble counters, a large adjoining walk-in shower, over-sized hanging lockers and storage compartments, desk, vanity, dresser, custom bedding, wool carpet. Just aft is a laundry room with new stacked washer and dryer, large cabinets, and built-in hinged ironing board. Access to the engine room and Crew quarters are just aft of the master, enabling the owner to keep a pulse on the vessel's vital components.

VIP:

Forward of the galley is a stairwell that accesses additional guest accommodations. Immediately forward of the stairwell is a suite with centerline walkaround queen berth. The ensuite vanity with sink and mirror and privately situated head and shower gives the feel of an old-fashioned bed and breakfast. The continuation of wood confirms that homey feeling. Quartz sink top; maple cabinets with burl trim, stainless portholes with covers, hanging locker with aromatic cedar, generous under berth storage, tile floors complete this suite.

Double Stateroom:

Just aft of the stairwell from above is one of the two matching guest suites, each with two oversized double berths, which are adjoined by a nightstands vanity. An ensuite head with shower, tile floors, Quartz countertop, stainless port lights with covers, generous under berth storage, custom bedding wool carpeting, padded walls with double welting of contrasting color, ultra-suede ceilings and maple cabinetry complete this very comfortable and well-rounded suites.

Double Stateroom:

Across the companionway and just aft of the stairwell from above is the other matching staterooms with twin oversized berths with adjoining nightstand/vanity. An ensuite head and shower, tile floors, Avonite countertop, stainless port lights with covers, generous under berth storage, custom bedding, wool carpeting, padded walls with double welting of contrasting color, ultra-suede ceilings and maple cabinetry are repeated in this suite. The passageway is panelled with cherry wood, carpeted with the same woven wool as throughout, and offers a full-length mirror and an additional laundry center.

Crew Quarters:

Located aft is the crew area with a L- settee and table, small fridge and one cabin to accommodate two crew in twin bunks, w/ head & shower.

FRASER

SALON

New Modern Grey L-shaped Couch

New Rectangle Ottoman w/Storage

Dark Leather Lounging Chairs (2)

65" TV and Entertainment System

Sonos Audio System Throughout Entire Vessel

Brand New Carpet

Modern Bar Top w/Fridge and ice maker

Two Bar Stools

Beautiful Burl Wood Throughout

High-End Modern Decorative Art

GALLEY

Enormous Open Country Galley (forward of the salon area)

Dining Seating for up to 12 comfortably (4 galley stools and 8 at the settee)

All New Appliances installed in 2020

GE Stove / Cooktop

GE Microwave

Custom S/S Cospolich side-by-side refrigerator

GE Dishwasher

GE Trash Compactor

Double s/s sink

Day Head on Starboard Side

PILOTHOUSE

19" Seatronx monitors (4)

Georges Bourgoignie GeorgesB@FraserYachts.com

1-305-491-2211

FRASER

Nav-Net System including 120-mile radar

AIS system

Depth Sounder

PTZ cameras to work with NavNet system E/R and Aft deck

FLIR Night Vision System

Nav-Net GPS on Arch and Furuno Depth sensor in hull

2 Computers (One for navigation and One for 64-point Vessel Information System)

Uninterruptible power supply (2)

21" Monitor for Cameras

Reworked and Revarnished Elm Burl on Pilothouse console

Naiad Datum stabilizers

New Jastram steering system

Underwater lights

Updated Transducers (2)

Camera DVR System

U-shaped settee with Large Burlled Cherry Table (offers seating for eight and built-in chart drawers)

Storage and 2 Hanging Lockers

Doors on both the port and starboard sides

Exterior Wing Controls on Each Side of Pilothouse

Full walk-around Portuguese Bridge

All glass is 3/8" with tinted side windows / clear windshield (for maximum visibility day or night)

BOAT EQUIPMENT

Custom Chocks for tender. Tender excluded from sale.

Lounge/settee which seats 6 to 8 comfortably. Pilothouse access forward.

Davit Crane: MarQuipt with a 2,500 lbs. capacity

Teak Table, Chairs (8), side tables (3) and Chaise Lounges (3)

Bunson Locker with Ample Storage on the Bow

FRASER

DECK EQUIPMENT

Teak Deck

Boarding Gates on Both Sides (2)

Search lights (2)

Bell

Remote wireless control for windlass

Ideal Capstan w/dual drums

Fenders (8)

Navy type anchors, 230 lbs. each (2)

330' anchor chain

ELECTRICAL SYSTEM

VOLTAGE: 24 and 12 VDC ship's service and machinery

Battery Switches (rotary style ON/OFF each battery bank)

Victron Monitor System

Victron inverter/chargers

24 VDC input

120 VAC output (8,000 watts)

Battery charger

Charles 931260

Charles 5000 series 30 A 12VDC

Charles 5000 series 10A 24VDC

AC SYSTEM

(2) Northern Lights 33kw Generators 240 VAC, Model # M984W.3, Serial #: 9842 34141 & Serial #: 984234142 G 1,800 rpm – Hours as of OCT 2023 (Port: 9,995; Stbd: 10,300)

FRASER

120 VAC and 120/240 VAC ship's service voltage

Shore power Inlet (2)

50 A 120/240 VAC in engine room, port side

100 A 240 VAC inlet through (2)

Glendinning Cable Master shore cord reels and (2) 100-amp cables

Main circuit protection - Breaker style at main panel, source sector panel in engine room

Branch circuit protection - breaker style protection with six panels

AC system fitted with ground fault meter to dec voltage current in ground system of vessel

Digital volt and amp meters for each shore power service at main switch panel

Genset Hz digital meter (one for each genset)

GFCI protection - Ground fault amp meter

100-amp Charles Insolation Booster Transformer (2)

AC and DC interior lighting system

Underwater lights white and/or blue

COMMUNICATION, NAVIGATION, & ENTERTAINMENT

ICOM M506 Pilothouse (2)

Furuno AIS serving communication and navigation system

Running Lights Bow red and green, anchor light, stern light and steaming light

KVH Azimuth digital fluxgate compass

All fiberglass reinforced plastic antenna

Maretron multi-function digital Nav Unit Depth Finders (5)

TimeZero Professional Charter plotter navigation system with raster scan charting

Furuno NavNet Chart plotter navigation system with GPS and raster scan charting with 120-mile radar open array antenna

Furuno GP-33 GPS receiver digital display

New Furuno NXT radar 96 nm range - 2023

Simrad Autopilot AP70

FRASER

Furuno NavNet color sounder dual frequency

ACR RCL 24 VDC search lights (2)

FLIR infrared camera system with remote control

LCD monitor and dedicated micro system control closed circuit TV system with 8 remote cameras

Four 19" color LCD monitors at helm served by Nobeltec Time Zero

Maretron digital wind instrument repeater with displays in pilothouse, V-berth, master stateroom, crew's quarters

KVH F-33 TracFone sat phone and broadband WIFI dome antenna self-tracking

Simrad analogue RAI unit PC computer

Windows based OS with 19" landscape color monitor by View Sonic

System runs TimeZero navigation software and various Windows based software programs

Wireless internet system with ATT and Verizon hot spots

Starlink

ENTERTAINMENT SYSTEM

Televisions:

65" LG TV in Main Salon

55" in Custom Cabinet which is on an elevator lift that raises/lowers

42" in Master

Sonos System:

Aft Deck

Salon

Galley

Pilot House

Sun Deck

Miscellaneous Electronics:

KVH Trac Vision HD7 TV self-tracking dome antenna

FRASER

SAFETY EQUIPMENT

Cameras on Engine room, port & starboard side decks, aft deck through Pilothouse Monitor

Fire/heat/smoke detectors throughout

Fire extinguishers throughout

Fireboy automatic fire system in Engine Room (2020)

Life rings with strobes (1)

ARC 406 MHz EPIRBs

Full USCG Safety Package w. Flares

New life raft 2023. 6-man Guardian SOLAS

MECHANICAL EQUIPMENT

Twin Caterpillar 3406 BTAG 540 HP Each – Hours as of OCT 2023 (Port: 6,473; Stbd: 6,475)

New Heat Exchangers (2017)

New hydraulic pump clutch port main engines (2017)

(2) Northern Lights 33kw Gens 240 VAC, Model # M984W.3, Serial #: 9842 34141 & Serial #: 984234142 G 1,800

rpm – Hours as of OCT 2023 (Port: 9,995; Stbd: 10,300)

(2) 100-amp shore power or (2) 50-amp shore power

(2) PTO's (one each eng.) for anchor windlass & davit; (1) PTO each eng. for stabilizers; (1) PTO each eng. For steering

BATTERIES

Main engines 24 Volts

Generator: 12 Volts

General service 24 Volts

Emergency 24 Volts

Charles Automatic Battery Chargers (3)

FRASER

AIR CONDITIONING & OTHER MACHINERY

A/C: Cruisair - Chilled water system – All air handlers new in 2020

CONDENSER/CHILLER UNITS (2) 4-Ton units, (1) 5-Ton unit

AC PUMP: (1) Scott 1 HP " pump with 1 HP 230VAC motor A/C cooling water pump

THERMOSTATS: Mechanical and electronic style thermostats: Electronic for air condition cooling system a mechanical for auxiliary heating system

WATER HEATER (2) Torrid 33-gallon water heaters 240 VAC service

ISE instant hot water heater point use (galley sink)

110 VAC HEATERS: 110VAC wall mount space heaters various location, Auxiliary heating with separate thermostat controls serving all accommodation spaces.

Parker Sea Recovery 1800 GPD Water Maker

Naiad Stabilizer 12SF fins with Naiad Datum 302 Control head

50 HP Hydraulic Bow Thruster

Hydraulic steering with dual HPS pumps system

Racor 500's, gens Racor dual 1000's mains

(2) Holding tanks with pump outs (125 gallons each)

EXCLUSIONS:

All personal property is excluded unless specifically identified and included in the sale agreement and listing specifications. Personal property refers to all items not permanently attached to the vessel including but not limited to: artwork, furnishings, and recreational or entertainment items. Advertisements, marketing materials, and/or other photography may depict the vessel with personal property, however, such personal property is excluded unless otherwise specifically included as provided herein.

The registered tender.

DISCLAIMER:

The Company offers the details of this vessel in good faith but cannot guarantee or warrant the accuracy of this information nor warrant the condition of the vessel. A buyer should instruct his agents, or his surveyors, to investigate

FRASER

such details as the buyer desires validated. This vessel is offered subject to prior sale, price change, or withdrawal without notice.

FRASER



FRASER



FRASER



FRASER



FRASER





FRASER



FRASER



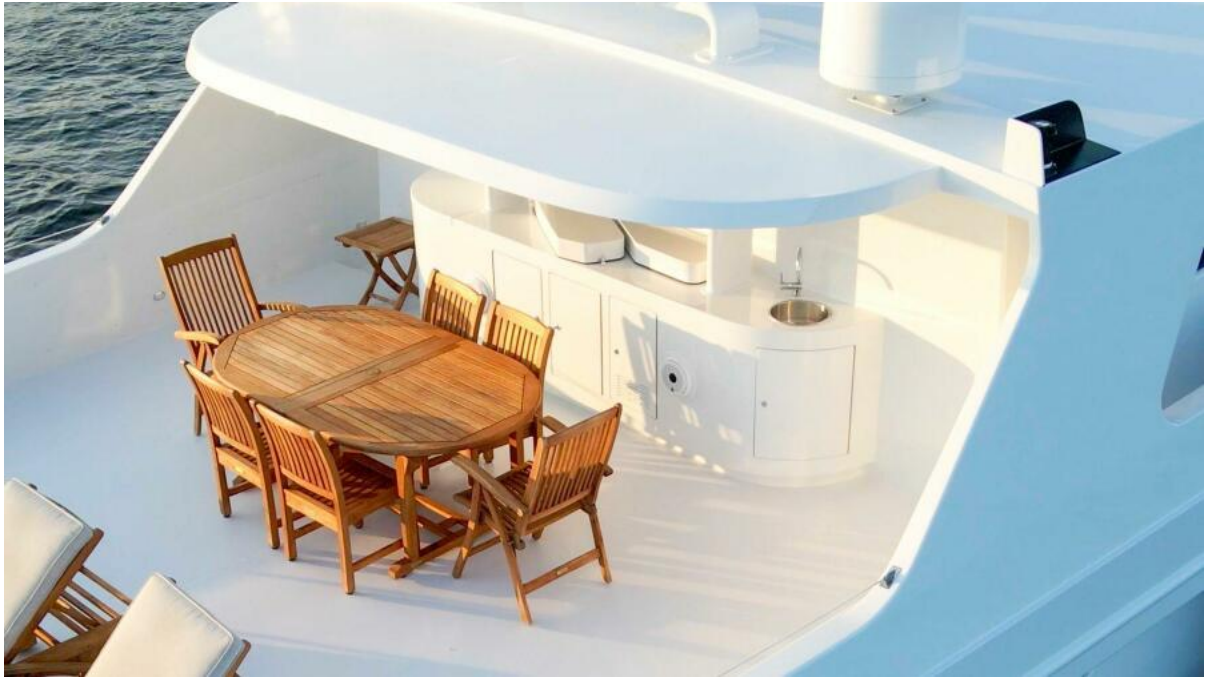
FRASER



FRASER



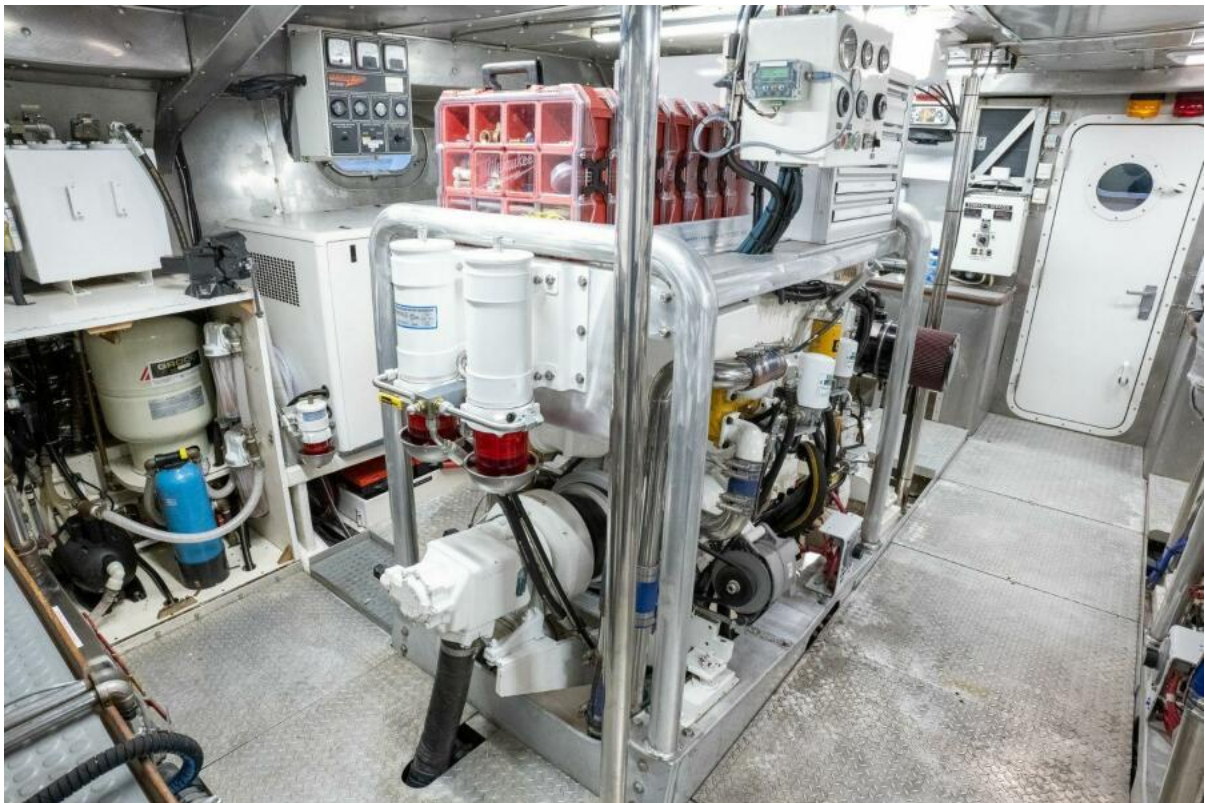
FRASER



FRASER



FRASER



FRASER



FRASER

