



## 4\*PUPPIES

130' (39.62m) 2003 Palmer Johnson  
Fort Lauderdale Florida United States



### OVERVIEW

Manufacturer:	Palmer Johnson		
Engines:	2 Caterpillar	Hull Material:	Aluminum
Engine Model:	3412E	Cruise Speed:	12 Knots
Engine HP:	1000	Max Speed:	14.5 Knots
Beam:	28' 0"	Cabins/Heads:	5 / 6
Max Draft:	"	Fuel Type:	Diesel
Water:	2500 G (9463.52 L)	Fuel:	14500 G (54888.44 L)

**\$6,950,000**



Josh Gulbranson Josh.Gulbranson@FraserYachts.com

+1 954 629 7435

# FRASER

## Data Sheet

Category: Motor Yachts  
Condition: Used  
Model Year: 2003  
Refit Year: 2022  
Documented Year: 2003  
Beam: 28' (8.53m)  
Min Draft: 6' 7" (2.01m)  
LOA: 130' (39.62m)  
LWL: 112' 5" (34.26m)  
Cabins: 5  
Sleeps: 14  
Twin Berths: 6  
Double Berths: 1  
Queen Berths: 1  
King Berths: 1  
Full Beam Master: Yes  
Heads: 6

Crew Cabins: 4  
Captain's Quarters: Yes  
Crew Sleeps: 8  
Crew Mess: 1  
Maximum Speed: 14.5 Knots  
Cruise Speed: 12 Knots  
Range NM: 5040  
Fuel Type: Diesel  
Hull Material: Aluminum  
Hull Shape: Displacement  
Hull Finish: Awlgrip HD  
Air Conditioning: Yes

Gross Tonnage: 5040  
Displacement: 261 tonnes  
Dry Weight: 399 lbs  
Stabilizers: Standard  
Stabilizer Brand: Koopnautic/Quantum  
Bow Thruster: Yes  
Fuel Tank: 14500 gal (54888.44 liters)  
Fresh Water: 2500 gal (9463.52 liters)  
Holding Tank: 900 gal (3406.87 liters)  
Builder: Palmer Johnson  
Interior Designer: A La Mer and Preston Phillips  
Exterior Color: Empress Blue  
HIN/IMO: PAJ00235A303

## Engines/Generators

### Engine 1

Caterpillar  
3412E  
Inboard  
1000HP  
745.70KW  
Fuel: Diesel  
Hours: 13070  
Hours Date: 03-15-2024  
Location: Port

### Engine 2

Caterpillar  
3412E  
Inboard  
1000HP  
745.70KW  
Fuel: Diesel  
Hours: 13072  
Hours Date: 03-15-2024  
Location: Starboard

### Generator 1

Northern Lights  
99KW  
1800.00RPM  
Hours: 22023  
Hours Date: 03/15/2024

### Generator 2

Northern Lights  
99KW  
1800.00RPM  
Hours: 22202  
Hours Date: 03/15/2024

# FRASER

## Summary/Description

4\*Puppies built by Palmer Johnson is only on her second Owner, originally built as UNITY and never been chartered. Fitted with a total of five staterooms plus study with connecting full head and shower offers accommodation for up to 14 guests.

*4\*Puppies built by Palmer Johnson is only on her second Owner, originally built as UNITY and never been chartered. Fitted with a total of five staterooms plus study with connecting full head and shower offers accommodation for up to 14 guests. Light colored and airy interior with full beam skylounge is appealing to a very broad market. Shallow draft, full displacement, transatlantic range and DNV classification insure her cruising capabilities. Designed by Murray and Associates with Naval Architecture by Vripack. Recent significant refit and full re-paint assures she is ready for next owner to enjoy.*

## Detailed Specification

### BASIC DETAILS

Name: 4\*PUPPIES

Type: Tri-Deck Displacement Motor Yacht

Builder: Palmer Johnson

Hull #: 235

Year: 2003

LOA: 130'00"/39.62m

LWL: 112'05"/34.26m

Beam Overall: 28'00"/8.53m

Draft (Half Load): 6'07"/2.01m

Hull Material: Aluminum

Superstructure: Aluminum

Decks: Teak

Flag: Jamaica

Classification: Det Norske,+1A1 LC R0 Yacht E0

20 year survey completed 2022

---

Josh Gulbranson    [Josh.Gulbranson@FraserYachts.com](mailto:Josh.Gulbranson@FraserYachts.com)

---

+1 954 629 7435

# FRASER

Naval Architect and engineering: Vripack

Exterior Designer/Stylist: Palmer Johnson and Murray & Associates

Interior Designer: A La Mer and Preston Phillips

Main Engines: 2 x Caterpillar 3412E 1,000 HP at 2,100 RPM

Max Speed: 14.5 kts

Cruising Speed: 12 kts

Range (Economical): 5,040nm

Stabilizers: Koopnautic/Quantum not zero speed

Displacement (Fully Loaded): 261

Gross Tonnage: 399 GT

Guest Accommodations: 14 Guests in 5 staterooms

Crew Accommodation: Accommodation for 6 crew plus Captain's double

## COMMENTS AND NOTEWORTHY FEATURES AT A GLANCE

- Full paint 2022
- New air conditioning plant
- New shore power converter
- Main engine major top end service completed
- Very big volume, but still under 400 GT
- Transatlantic range
- Shallow draft
- Caterpillar machinery
- DNV Class
- Only two Owners since new, never chartered
- 5 staterooms plus 6th flex cabin or lounge
- Light interior
- Impeccable condition

# FRASER

## ACCOMMODATIONS

4\*PUPPIES has a delightful layout with a full beam VIP or second Owner's stateroom on deck, a study which can double as an additional stateroom with full head aft of the VIP /Owner's on-deck stateroom, an updated galley layout, a light bright and airy main salon and open aft deck and very safe protected water access. She has a full width Owner's suite with his and her bathrooms as well as three additional guest staterooms all below, a full beam sky lounge and a well laid out sun deck.

4\*PUPPIES was purposely built to be the largest yacht able to fit into the undercover storage sheds at the Fort Lauderdale Boat House and to enter shallow waters of Ocean Reef Club in the Florida Keys.

### LOWER DECK:

There are **four guest staterooms** on the lower deck. Forward in the guest accommodations area to port is a **twin berth stateroom** with en suite head with bath tub and shower.

Opposite to starboard is a **queen berth stateroom** with en suite head with bathtub and shower.

Aft to starboard is a proper sized full service laundry room.

Opposite the laundry to port is a **four berth bunk cabin, each berth is a twin and can be converted back to just twin berths**. Offers en suite head with stall shower.

Aft and full beam is the **Owner's stateroom** with a large walk-in closet with his and her heads. TV drops down from the ceiling at the foot of the bed. Portside has a chest of drawers and starboard has a lounge chair and ottoman. Portside head has a bathtub, there's a center line shower which passes through to the starboard head. Starboard head has a bidet, each head has wash basins and toilets.

Crew quarters further forward is accessed through the galley. Features two upper and lower **crew staterooms** forward, each with upper and lower berths and en suite bathrooms with stall showers. Further aft to starboard is a double berth **engineer's cabin** with en suite bathroom with stall shower. The crew mess is opposite to port with basic galley. Captain's cabin is located aft of the bridge with full ensuite head.

The **engine room** is further aft with large lazarette all the way aft with very safe internal staircase access up to the aft deck and centerline access out to the swim platform.

# FRASER

The **lazarette** has a dive center with bottle storage and additional laundry service for deck towels.

## MAIN DECK:

The full width **VIP or on deck owner's suite** is forward with vanity and easy chair outboard to port and vanity areas to starboard. The bathroom is aft with separate stall shower and separate bathtub.

Moving further aft is the **study /children's playroom, or children's cabin** with sleeper couch and access to the **head/day head** with shower. This can also be used as a cabin. There is a direct access point from the galley if this space is to be used for additional crew or guides.

The very large **galley** is a full function workspace with extra large stewardess station/pantry area. From the galley there is access to the portside deck, crew quarters forward, guest dining room and the on deck study. Large on deck windows.

The inside **dining room** is open to the **main salon**, separated by a low buffet cabinet. This area has very large windows and open feel.

The main **aft deck** is open with a circular dining table, staircase access to the bridge deck above, there is access to a passarelle starboard side of the stern and staircase access to the lazarette and swim platform on the portside.

## BRIDGE DECK:

There is a Portuguese bridge forward of the wheelhouse with wing stations on both port and starboard side. The **wheelhouse** has port and starboard doors out and a settee along the center aft bulkhead. The **Captain's cabin** is aft of the wheelhouse to port with double berth, desk and en suite bathroom.

A **day head** is located aft of the wheelhouse on the starboard side of the guest foyer. Further aft is the full beam **skylounge** which is a fantastic size, it offers a bar with stools to starboard, game table aft, and lounge area with couches and a desk opposite to port. Large windows complement the light woods.

The **aft bridge deck** has seating ahead of the tender and toy storage area which also has the tender launching davit and stairs up to the sundeck and down to the main deck.

## SUN DECK:

# FRASER

The **sun deck** is a lovely spot with Jacuzzi tub on the centerline forward surrounded by sun pads either side, and chaise lounges under the arch. There's a bar and BBQ area on the portside and u-shaped seating and dining aft.

## CONSTRUCTION

Hull: Aluminum

Superstructure: Aluminum

Decks: Teak

Paint Hull: Awlgrip HD Empress Blue (new 2022)

Paint Superstructure: Awlgrip HD Snow White (new 2022)

## CAPACITIES

Tonnage :399 gross,:261 displacement

Fuel Capacity: 14,500 USG (54,888 Liters)

Water Capacity: 2,500 USG ( 9,464 Liters)

Ballast Water: 7,000 USG (26,498 Liters)

Watermakers:2 x 1,200 GPD (2 x 4,542 LPD)

Lube Oil: 190 USG (719 Liters)

Waste Oil: 190 USG (719 Liters)

Black Water: 900 USG (3,407 Liters)

Gray Water: 900 USG (3,407 Liters)

Speed and Range:

Speed/Consumption p/h/Range/RPM

Maximum:14.5 kts/60 g/h/3,100 nm/2,100

Cruising:12 kts/40 g/h/4,350 nm/1,600

Economical:10.5 kts/30 g/h/5,040 nm/1,400

# FRASER

\* these ranges are without safety reserve factored

## MAIN MACHINERY

Main Engines: 2 x Caterpillar 3412E 1,000 HP at 2,100 RPM

Engine Hours (March 2024): Port: 13,070

Starboard: 13,072

Last Overhaul: April 2021

Top end overhaul @ 12,350/12,355 hrs by Performance Power Systems

Hours Until Next Overhaul: 3,000 – 5,000 (Based on oil analysis)

Engine Controls: ZF single lever

Gear Boxes: ZF 3.4:1

Shafting: 4" Aquamet

Propellers: 2 x 5 blade NiBrAl

## Generators & Electricity:

Output: 120/208V AC 60 hZ three phase

Generators: 2 x Northern Lights 99 kW, 1,800 RPM

Generator Hours (March 2024): Port: 22,023

Starboard: 22,202

Last Major Service: June 2020

Top end overhaul @ 18,013/18,184 hrs by SC Duggan

Hours Until Next Overhaul: 4,000 – 6,000 hrs (Based on oil analysis)

Shore Power: 1 x 90 KVA Atlas SHF shore power converter with ATLAS transfer Box

Batteries: 4 x DF31DT Gel Cell batteries

## ANCILLARY MACHINERY

Air Conditioning: 4 x Dometic MCGX120 208-230V/3/60 Chilled water modules

---

Josh Gulbranson   Josh.Gulbranson@FraserYachts.com

---

+1 954 629 7435



# FRASER

Air Compressor: 1 x Dayton Speedaire compressor

Bow Thruster: 1 x Quantum Marine Engineering 80 HP

Fresh Water Heaters: 1 x Grundfoss

Fresh Water Maker: 2 x Sea Recovery 1200 gpd Aqua Whisper

Fresh Water Pump: 1 x Gianneschi & Ramacciotto

Fuel Separator: Alpha Laval

Fuel Filters: 2 x Racor 79/100

2 x Racor 500 MA

1 x Walbro

Oil Pumps: 2 x Oberdorfer

Sewage Treatment System: 1 x Headhunter model RE 200B

Toilet System: Headhunter Tidal Wave

Stabilizers: Koopnautic/Quantum Marine

Steering System: Wagner hydraulic steering

## Deck MACHINERY & EQUIPMENT

Anchors: 2 x 200kg Poole-N galvanized anchors

Anchor Chains: 2 x 150m of 11/16" chain

Anchor Windlass System: 2 x Muir

Aft Warping Capstans: 2 x Muir

Boat Crane: 1 x Nautical Structures EZ-3000FB hydraulic crane, 3,000 pounds and 16' boom length

Passarelle: 1 x Marquipt, telescoping with rotation

Accommodation Ladders : 1 x Nautical Structures ship side accommodations stairs

1 x Marquipt Sea Stairs with turnstyle

1 x Marquipt swim ladder for swim platform

Spotlights: Hella and Jabsco, 24VDC

Jacuzzi: Jacuzzi

## SECURITY, FIRE FIGHTING & SAFETY EQUIPMENT

Sart: 2 x ACR

Ship's Safe: 1 x Owner's Stateroom

1 x Captain's Cabin

Horn: 2 x Kahlenberg

Bell: 1 x 12" Perko

Searchlight: 2 x Carlisle & Finch

Fire Fighting Equipment: 2 sets of Firefighting gear

Fire Control System: SEAMCO Hi Fog system nitrogen charged

Portable CO2: 3 kg CO2, one for each of following spaces: salon, lower foyer, wheelhouse, crew lounge, galley and lazarette.

Portable Fire Extinguishers: 4.5 kg dry powder, one for galley, two for engine room

45 liter foam for engine room

## TENDERS AND TOYS

Tender: 1 x Brig semi rigid DIStender 21'09"/6.5m (2019)

Waverunners: 3 x Yamaha Sport 11'00" (2019)

Waterslide: AquaBanas 550 with the additional base in blue and white

Dive Compressor: Bauer, CII/DV. 5.0 CFM

Scuba Gear: 8 x BC's

12 x Masks and snorkels

12 x Fins, various sizes

Paddleboard: 1 x Lagoon

## SHIPYARD WORKS (LMC)

# FRASER

2020:

- Annual shipyard overhaul
- New HVAC plant with capacity upgrade
- New shore power 90 KVA Atlass SHF converter/isolator
- Atlas transfer box for shore power
- Main engines/gear box coupling replacement/upgrade
- Upgrade communication system /Pepwave antenna

2021:

- Annual shipyard overhaul
- Main engines top end overhaul
- Gear boxes/clutch transmission upgrade
- Service stabilizer/rebuild
- New shaft seals
- Davit overhaul

2022:

- 10 year special survey docking
- Full Repaint hull and top sides
- Generators rebuilt
- New MSD plant
- Windlass and anchor gear repair/design modification
- Painting of galley cabinets
- Davit overhaul
- New covers Jacuzzi, dining, pilot house
- Installation of Cathelco antigrowth system
- Installation of new bathroom hardware
- Interior air ducts sanitized

# FRASER

- New galley range and fryer
- Converted LED exterior/interior 19mm lights and 4" Lights
- Flooring laminate
- Nanny and salon AHU units replaced
- Wall décor in galley
- Master suites 2 x shower door replacements

## EXCLUSIONS

A detailed inventory and a list of exclusions will be provided pursuant to a Purchase Agreement.

## DISCLAIMER

All speeds, measurements, capacities, consumptions, etc. may be approximate or estimated. Specifications provided for information only. Data was obtained from sources believed to be reliable and is not guaranteed by owner or brokers. Buyer assumes the responsibility to ascertain the correctness of all data contained herein and otherwise provided and must instruct his agent and surveyors to confirm all details for accuracy prior to purchase. Subject to prior sale price and inventory change or withdrawal from market without notice.

# FRASER



Main Deck Aft Dining Looking Aft To Starboard





Main Deck Aft Dining Looking Aft To Starboard



Main Deck Aft Dining Looking Aft To Port



Main Salon Looking Forward



Main Salon Looking To Portside





Dining Salon Looking Forward To Portside



Dining Salon Looking Aft To Portside





Study With Sleeper Couch Looking To Starboard



Day Head With Shower



On Deck VIP Stateroom Looking Forward To Portside



On Deck VIP Stateroom Portside



# FRASER



On Deck VIP Stateroom Bath



Foyer Looking To Aft



Stairs To Lower Guest Accommodations



Lower Guest Foyer Looking Aft 4PUPPIES



Master Stateroom Looking Aft To Portside





Master Stateroom Looking Forward To Portside



Master Stateroom Looking Aft To Portside



Master Stateroom Portside



Her Master Bath Portside





His Master Bath Portside



4 Berth Stateroom Portside Looking Forward





Queen Guest Stateroom Looking Aft To Starboard



Twin Guest Stateroom Looking Aft



Stairs To Bridge Deck



Bridge Looking To Starboard Side



Bridge Seating Area





Captains Cabin Portside Looking Aft



Skylounge Looking Forward To Starboard



Skylounge Looking Aft To Portside



Skylounge Bar Looking Forward To Starboard





Bridge Deck Aft Looking Forward To Starboard



Sundeck Seating And Dining Area Looking Aft To Portside

# FRASER



Sundeck Lounge Area Looking Aft To Portside



Sundeck





Sundeck Jacuzzi Looking Forward



Sundeck Jacuzzi



# FRASER



Galley Portside Looking Aft



Galley Looking Aft To Portside



Lower Deck Laundry Starboard Side



Crew Lounge Portside Looking Aft

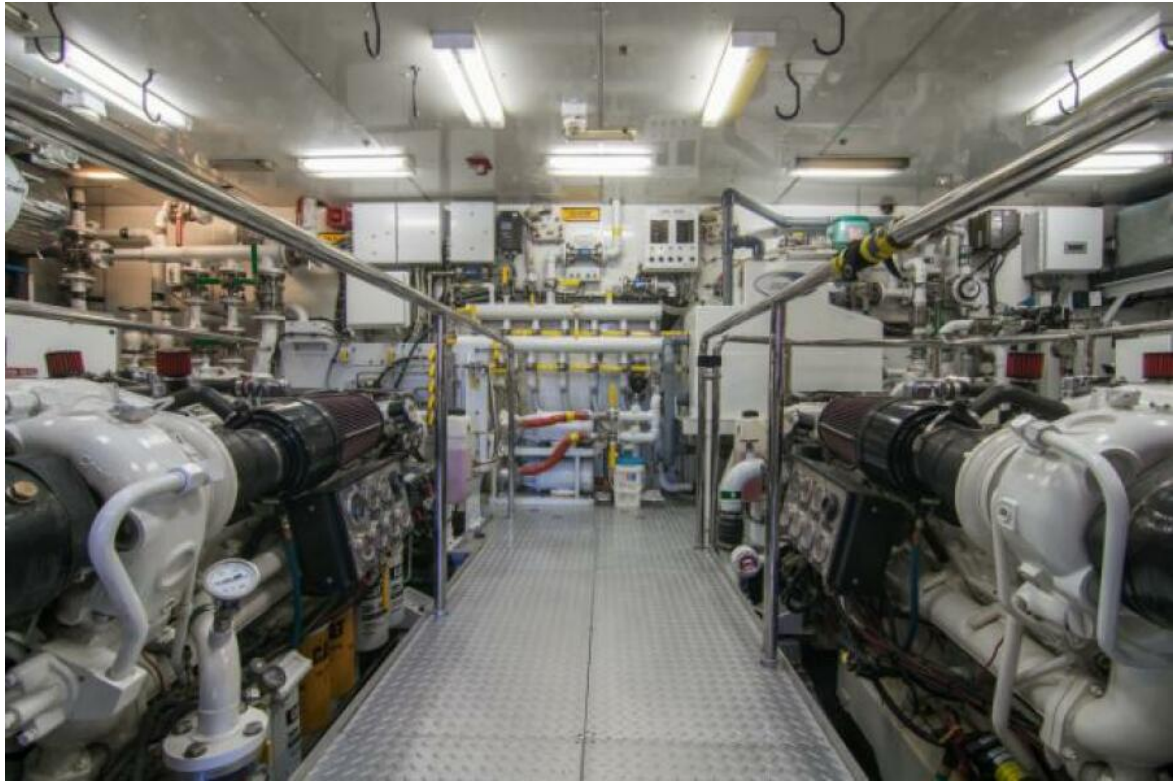


Crew Lounge Portside



Crew Lounge Portside





Engine Room



Lazarette

# FRASER



Foredeck



At Anchor Starboard Side



# FRASER



At Anchor Starboard Side



At Anchor Stern Portside

# FRASER



At Anchor Stern



4\*PUPPIES And Toys



# FRASER



4\*PUPPIES And Toys

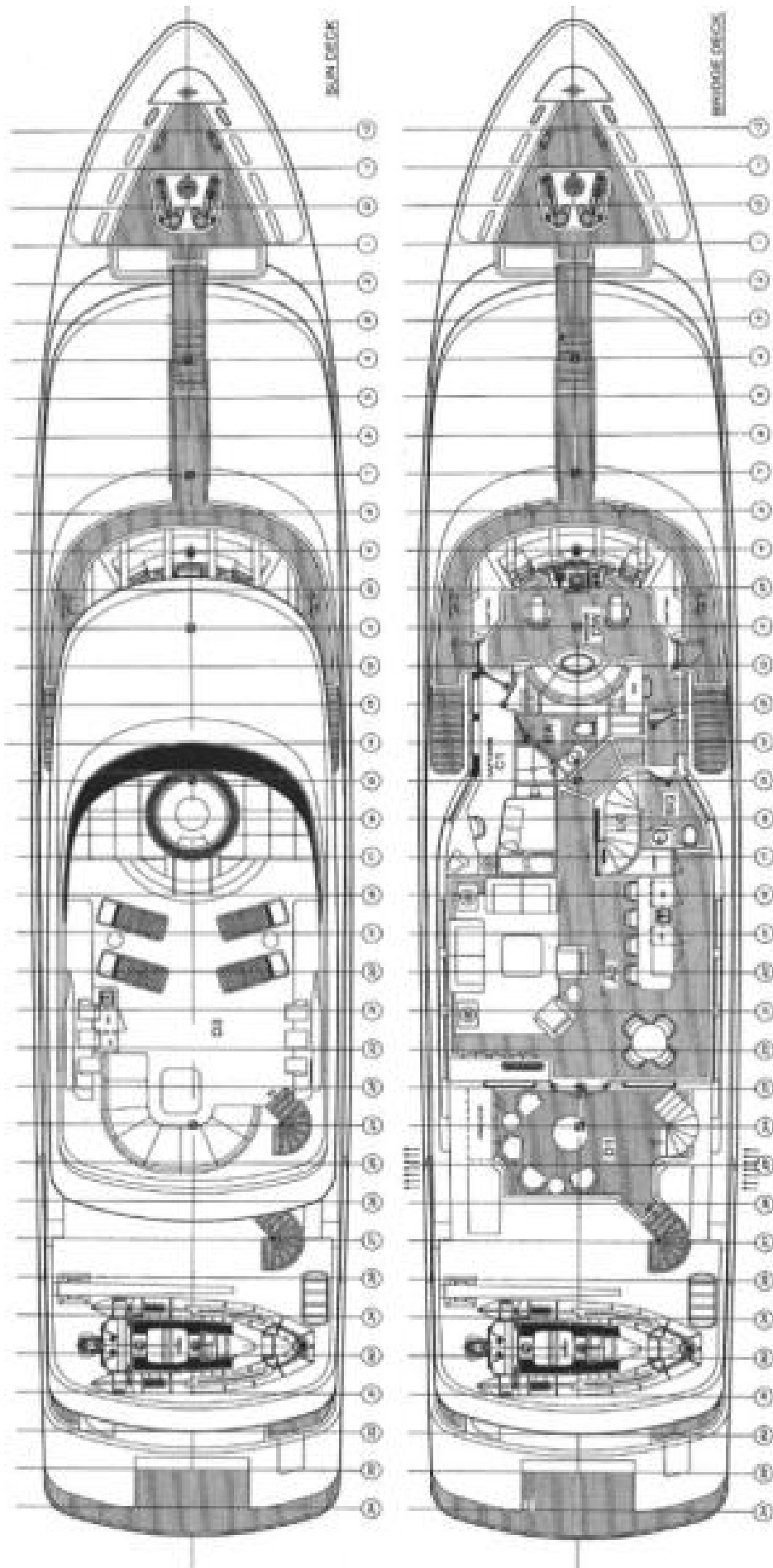


Underway

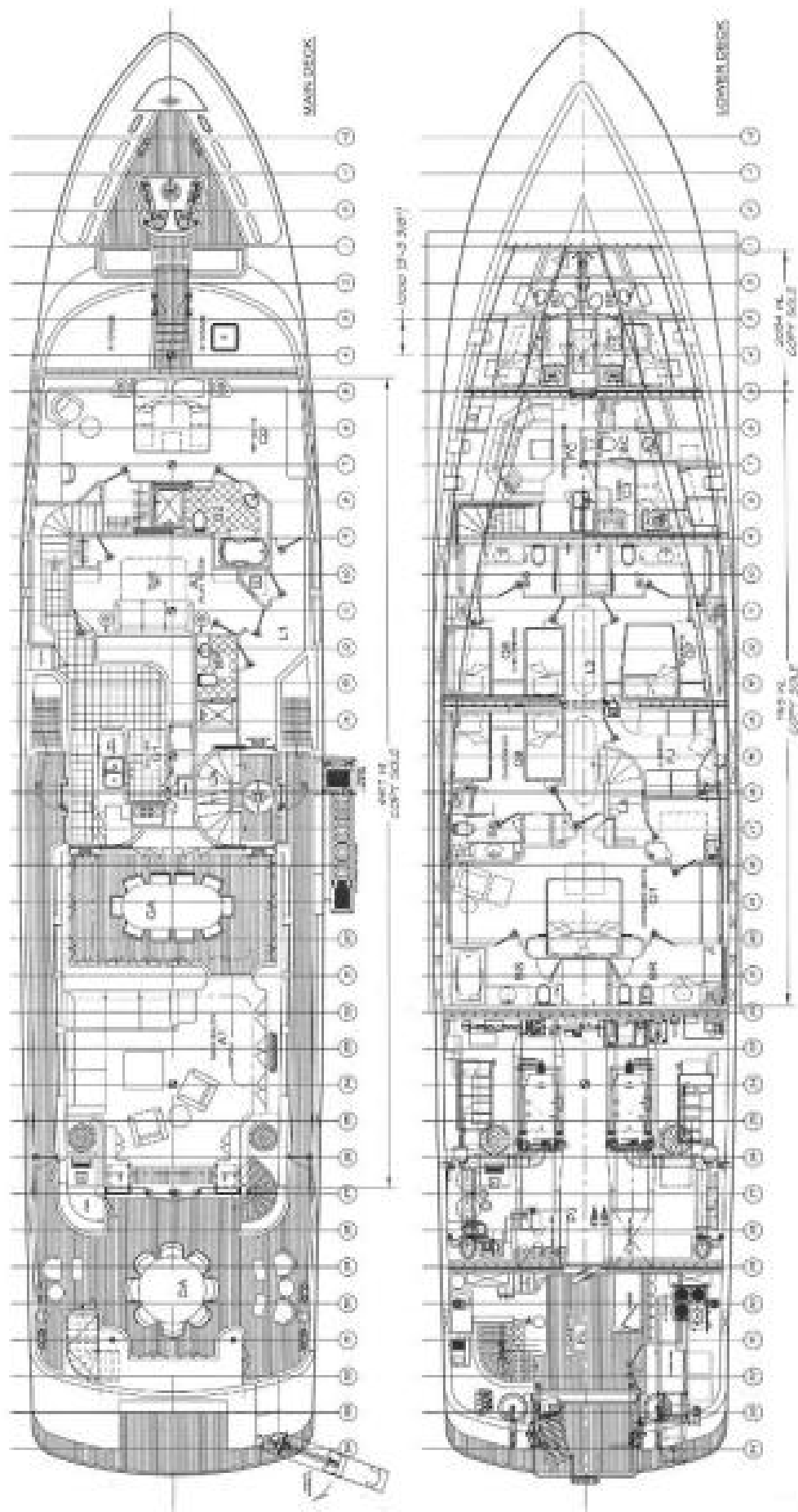




Profile



Sun Deck And Bridge Deck



Main Deck And Lower Deck