



Lobo Del Mar II

40' (12.19m) 2022 Boston Whaler 405 Conquest
Fort Pierce Florida United States

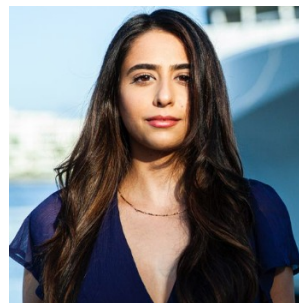


OVERVIEW

Manufacturer: *Boston Whaler*
Engines: 3 Mercury
Engine Model: 600
Engine HP: 600
Beam: 13' 6"
Max Draft: "
Water: 90 G (340.69 L)

Hull Material: Fiberglass
Cruise Speed: 31 MPH
Max Speed: 61 MPH
Cabins/Heads: 2 / 1
Fuel Type: Gas/Petrol
Fuel: 1040 G (3936.83 L)

\$1,550,000



Data Sheet

Category: Walkarounds
Condition: Used
Model Year: 2022
Beam: 13'6" (4.11m)
Min Draft: 2' 7" (0.79m)
LOA: 40' (12.19m)
Cabins: 2
Single Berths: 2
Heads: 1

Maximum Speed: 61 MPH
Cruise Speed: 31 MPH
Fuel Type: Gas/Petrol
Hull Material: Fiberglass
Bridge Clearance: 10' 5"

Dry Weight: 22400 lbs
Fuel Tank: 1040 gal (3936.83 liters)
Fresh Water: 90 gal (340.69 liters)
Holding Tank: 30 gal (113.56 liters)
HIN/IMO: BWCE1375K122

Engines/Generators

Engine 1

Mercury
600
Outboard
600HP
447.42KW
Fuel: Gas/Petrol
Hours: 50
Year: 2022

Engine 2

Mercury
600
Outboard
600HP
447.42KW
Fuel: Gas/Petrol
Hours: 50
Year: 2022

Engine 3

Mercury
600
Outboard
600HP
447.42KW
Fuel: Gas/Petrol
Hours: 50
Year: 2022

Summary/Description

Enjoy long-distance cruises and overnight stays, chase gamefish far offshore, or host an impromptu gathering: With the 405 Conquest, you never have to choose between gracious comfort and exceptional capability. This 405 is fully loaded and has it all...

ON DISPLAY AT THE 2022 FORT LAUDERDALE INT'L BOAT SHOW

Enjoy long-distance cruises and overnight stays, chase gamefish far offshore, or host an impromptu gathering: With the 405 Conquest, you never have to choose between gracious comfort and exceptional capability. This 405 is fully loaded and has it all...

Lobo Del Mar II has first class capabilities for all your boating desires, from fishing, to hosting, or simply in performance she delivers on all fronts.

****Lift Kept with Low hours***

****Seakeeper***

****Dual Joystick***

****Enclosed A/C Pilot House***

****Electric Reel Receptacles***

Manufacturer Provided Description

The 405 Conquest, aka the SUV of the Sea, is envisioned from the keel up as an adventure-ready cruiser, the 405 delivers incredible performance, versatility and ease of use. From the robust bow lounge area, to the ultra-convertible helm companion zone, to the inviting cabin with master and two guest sleeping quarters, the 405 brings sophistication and luxury to the Conquest series. Enjoy long-distance cruises and overnight stays, chase gamefish far offshore, or host an impromptu gathering: With the 405 Conquest, you never have to choose between gracious comfort and exceptional capability.

- Cabin features private master stateroom and two guest sleeping quarters, an enclosed head with separate shower, a convenient galley and more.
- Full-beam single-piece windshield with optional side glass for unobstructed visibility and a closer sense of connection with the water.
- Quad 300-hp Mercury Verado® engines with optional Joystick Piloting provide impressive power and control.
- Highly customizable transom prep area with multiple fishing and entertaining options.
- Unique portside companion lounge with hidden table converts to multiple positions.
- Luxury touches throughout include a rain shower, innerspring mattresses, Corian countertops and premium

finishes.

- Available with Seakeeper gyro-stabilizing system.

Stand Equipment

- All hardware 316-L stainless steel
- All rails welded 316-L stainless steel
- Vinyl ester barrier coat over entire hull and hull sides

Materials

Cabin

- Cabinets – teak wood with satin finish with maple and cedar lining
- Flooring and entry steps – teak with satin finish
- Wall accent panels covered in Miami Trackstar Dove with Brushed Gold accents
- Table (dinette) – teak high gloss
- Seating upholstery material – Ultraleather Dwell Sandpiper
- Counter tops - Lava Rock Corian

Head

- Cabinets – teak wood with satin finish with maple lining
- Door – teak wood with satin finish
- Flooring in head – solid teak
- Flooring in shower – Lava Rock Corian
- Seating in shower – solid teak with satin finish
- Counter tops, vanity and shower - Lava Rock Corian

Forward Berth

- Cabinets – teak wood with satin finish with maple and cedar lining
- Flooring – Solid teak
- Wall accent panels covered in Miami Trackstar Dove with Brushed Gold accents
- Seating upholstery material – Ultraleather Dwell Sandpiper
- Side shelves – Lava Rock Corian
- Comforter/Duvet – Calcite Steel, custom fit to mattress

Mid-Berth

- Cabinets – teak wood with satin finish with maple and cedar lining
- Flooring – Solid teak
- Wall accent panels covered in Miami Trackstar Dove
- Comforter/Duvet – Calcite Steel, custom fit to mattress

Cockpit

- Counter tops - Lava Rock Corian
- Upholstery Material – two tone Omnova Sof Dura Stone/Spradling Diamante Ivory

Deck/Cockpit

- 10" stainless steel pull-up cleats – bow (2), spring line (2), crosstie cleats at transom (2)
- 10" stainless steel cleats – stern cockpit with gunnel boats hawse pipe (2), anchor locker (1)
- 27" interior freeboard
- Acrylic transom door with stainless steel latch
- Anchor windlass with 400' rode and chain (handheld remote control, stainless steel swivel, polished stainless steel 44lb anchor, polished stainless steel bow roller davit)
- Boarding ladder at transom
- Bow eye (heavy duty polished stainless steel)
- Chrome Boston Whaler logo/model designator
- Coaming bolsters (cockpit)
- Dive door (molded fiberglass boarding door on port side with removable stainless-steel dive ladder with dedicated storage in stern seat)
- Drink holders (stainless steel) (4 in bow, 2 in hawse pipes, 2 at helm, 2 at port console, 2 at port lounge, 2 per side in recessed pockets at aft helm deck seats)
- Lighting – LED courtesy lights in cockpit (multi-color)
- Livewell (19-gallon) (pressurized insulated in aft port corner with clear lid, blue interior and dual white LED lights)
- Rails - hand rails (welded stainless steel) (companion way to helm deck and into cabin, boarding ladders and prep station)
- Rails – high bow rails (welded stainless steel)
- Rails – rub rail (white with stainless steel insert) (heavy-duty)
- Rails – toe rails (cockpit) (stainless steel) (under gunnel storage shelf with downrigger weight holders – 1 per side)
- Rod holders (gunnel-mounted) (3 aft cockpit starboard) (2 port)
- Rod holders (under gunnel) (2 starboard)
- Rod holders (transom-mounted) (5)
- Self-bailing cockpit sole
- Shower (freshwater with hot and cold water) (near transom door)
- Shower (freshwater with hot and cold water) (near dive door)
- Spotlight (mounted on hardtop)
-

Helm console starboard-side layout includes:

- A/C unit (16K BTU) with 2 helm vents and wetbar area vent
- Bow thruster control
- Compass (with lighting)
- Defogger system (port and starboard) (120v heater with blower)
- Display – 7" color LCD touch screen system monitor and control center
- Drink holders – stainless steel, extra deep (1), standard depth (1)
- Electronics mounting surface with space for dual 16" or dual 19" Raymarine displays
- Electrical switch panels with stainless-steel push-button switches and illuminated text
- Footrest molded into console with solid teak steps with satin finish
- Fusion USB and Aux input
- Mercury DTS dual binnacle controls with integrated engine trim controls (single remote ignition key switch in cabin with pushbutton start/stop located at the helm) (Mercury SmartCraft Vessel View 5" color LCD Display) (network connections to Raymarine Navigation Package)
- Rails – grab rail (stainless steel)
- Spotlight control
- Steering wheel – cast stainless steel with knob and tilt helm

- Storage recess on top of dash with (1) dual USB and (1) 12-V wireless cell phone charging holder

Port Lounge and Console

- A/C unit (12K BTU) (with 2 vents on dash and seating area vent)
- Acrylic/glass dash
- Drink holders – stainless steel (2)
- Dual helm seat with arm rests that convert to create a large sun lounge area
- Rail – grab handle
- Stereo remote control – Fusion Bluetooth remote
- Storage – glovebox style with (1) dual USB and white LED light
- Storage recess on top of dash with (1) dual USB and (1) 12v wireless cell phone charging holder
- Table – teak (high gloss with polished stainless-steel inlay, aft lounge area with electric high low conversion)

Galley

- 120-V receptacle
- Cabinets – teak wood, satin finish with maple lining located under counter and over galley
- Cabinet – overhead with AC and DC vessel system controls
- Cabinet storage – behind sink providing additional storage for galley supplies
- Cabinet storage – for dishes
- Cooktop burner (single)
- Countertop with faucet and undermount sink (solid surface)
- Lighting – LED white light overhead (1)
- Lighting – LED RGB courtesy lighting under overhead cabinet and countertop with dimmer control
- Microwave – in overhead cabinet
- Pullout out waste receptacle in cabinet under galley counter
- Rail – handrail (stainless steel)
- Refrigerator/freezer – drawer, stainless steel 12-V/120-V (3.0 cubic feet) CR85
- Sink filler – solid surface matching countertop with integral cutting board
- Wine glass holder's underside of cabinet with lighting (6)

Seating

- Bow lounge with dual row tilt up backrests (includes canvas cover)
- Foldaway stern bench seat with elevated backrest
- Helm seat (fore and aft electrical adjustment with swivel)
- Port console seat (2-person, forward facing with innovative mechanism to convert to an aft facing lounge)
- Port aft facing seat (2-person seat that can convert to a lounge/filler cushion over the lowered table)
- Port forward facing seat (2-person seat with conversion seatback for aft facing mezzanine seat)
- Starboard aft facing (2-person mezzanine seat that folds down providing a countertop at the prep station)

Storage

- Bilge - aft mechanical space, large storage tray (deleted with gyro)

- Cabin galley – upper, mid and lower cabinets at galley
- Cabin main – cabinets above starboard settee
- Cabin main – in-floor storage compartment
- Cabin main – storage under starboard settee
- Cockpit – downrigger weight holders (2)
- Cockpit – storage below pullout grill
- Cockpit – insulated 220qt built-in cooler/storage under seating with dual access
- Cockpit – rod holders under starboard gunnel (2) (deleted with foldout bench seat option)
- Fish boxes – insulated in-deck with pump-out (2)
- Guest mid-berth – large storage compartment under berth with pull out drawers
- Guest mid-berth – port side cedar lined hanging locker with removable shelves, dish storage and light
- Guest mid-berth – port side storage under hinged countertop
- Head – storage cabinet under sink and overhead
- Helm deck – portside console glovebox and forward storage tray
- Helm deck – starboard helm storage drawers and forward storage tray
- Helm deck – starboard wet bar storage drawers and storage compartment
- Master stateroom forward – large storage compartment under berth
- Master stateroom forward – port side vertical cabinet with shelves and light
- Master stateroom forward – starboard side cedar-lined hanging locker with light

Cabin Interior (Main)

- 120-V receptacle
- 12-V and dual USB receptacles
- Air conditioner (16,000 BTU) reverse cycle
- Carbon monoxide and smoke detectors
- Cabinets – teak wood, satin finish with maple lining located over settee
- Digital vessel control – iPad with inductive charging case, monitor vessel systems and control DC circuits
- Door – cabin entry (lockable acrylic)
- Lighting – LED white overhead lights with dimmer switches (2)
- Lighting – LED RGB diffused courtesy lighting with dimmer control
- Materials – easy to clean interior materials
- Settee – L-shaped with storage under cushions and additional filler cushions with dedicated storage to convert to a sleeping berth
- Skylight
- Storage – large storage compartment in salon floor
- Table – dinette (folding with electric high low to convert to a berth) (solid teak wood with gloss finish)
- Throw pillows (5)
- TV 24” flat screen HDTV with Apple TV Integration
- Windows – hull side with pull-down pleated shades

Master Stateroom / Forward Berth

- 120-V receptacle (port and starboard)
- Air-conditioner (8,000 BTU) reverse cycle with LCD Control
- Bed – island bed with trunk style front storage access (gas assist hatch), 8” thick Premium Handcraft® pillowtop innerspring mattress with electrically actuated hinged backrest, fitted sheet, comforter and pillowcases (2

regular-size)

- Cabinets overhead on port and starboard side with flip up doors
- Carbon monoxide and smoke detectors
- Door – sliding pocket door separating the stateroom from salon
- Flooring and entry steps – solid teak with satin finish
- Lighting – LED RGB diffused courtesy lighting with dimmer control
- Lighting – LED overhead lights (4)
- Lighting – LED overhead reading lights (2)
- Opening hatch
- Service access to A/C unit (through forward bulkhead) and bow thruster (through the floor)
- Storage – hanging locker with cedar lining with door activated light (starboard side)
- Storage – locker with cedar lining with door activated light and shelves (port side)
- Vacuum – Dyson V7 handheld with charging holder
- TV – 24” flat screen HDTV with Apple TV Integration
- Vimar single USB receptacles on port and starboard nightstands
- Vimar overhead light switch located on starboard nightstand
- Windows with pull down pleated shades (hull-side)

Enclosed Head Compartment

- 120-V receptacle at vanity
- Dual entrance (from cabin and from master stateroom)
- Flooring – solid surface flooring in the shower and solid teak flooring on the vanity area
- Lighting – LED overhead light (2) with dimmer
- Lighting – LED RGB diffused courtesy lighting with dimmer control
- Mirror – full length (located on acrylic stateroom access door)
- Opening port light
- Rails – handrail (stainless steel)
- Shower – enclosed shower with rain head and hand-held sprayer with hot and cold faucet and bi-fold acrylic shower divider
- Shower sump
- Skylight (frosted glass)
- Toilet paper holder inside vanity
- Towel ring and bar
- Trash chute in counter
- Vacu-Flush® toilet (electric), holding tank with vent filter, overboard discharge, dockside pump-out, tank full indicator alert and progressive tank level indication integrated into digital network
- Vanity storage
- Vanity with ceramic vessel sink and polished chrome faucet
- Ventilation (forced air)

Mechanical (Mild and Forward)

- Air-conditioning (cabin) – dual reverse cycle units (16,000 BTU in main cabin, 8000 BTU in forward stateroom)
- Air-conditioning (helm deck) – dual reverse cycle units (16,000 BTU starboard, 12,000 BTU port)
- Battery trays for (3) group 31 house batteries with advanced battery management system and in-cabin electric switches and charging relays with remote paralleling

- Bow thruster (6kW) with dedicated battery bank and charging system (not available with Joystick Piloting option)
- Freshwater anchor washdown faucet
- Freshwater hot and cold-water system, 90-gallon tank, with dockside hookup and tank level indicator
- Fuel tanks - dual 310-gallon aluminum fuel tanks
- Manifold plumbing system for fresh water with individual valve per circuit
- Water heater (11gallon)

Mechanical (Aft Bilge)

- 300 V8 DTS Black Quad Mercury Verado engines with hydraulic power steering and Shadow Mode Technology (91 octane fuel recommended)
- Battery trays for (4) group 31 engine batteries with advanced battery management system and in-cabin electric switches and charging relays with remote paralleling
- Bilge pump - high water bilge pump with alarm (2000 GPH)
- Bilge pumps - automatic (300 GPH forward, 2000 GPH aft)
- Engine fuel / water separators (4)
- Freshwater pullout hot and cold shower (2) located at dive door and transom door
- Freshwater washdown - stainless steel faucet located in cockpit
- Generator (diesel 12kW Fischer Panda) - 240-V 60 Hz with fire suppression system, automatic with manual override
- Horn - electric dual polished stainless-steel trumpet horns
- Inlet - dockside cable TV inlet with low profile digital antenna on hardtop and boost control in cabin
- Inlet - 50-amp shore power inlet with battery chargers, isolation transformer and 50' shore power cord
- Lighting - LED cockpit and machinery space lighting
- Propellers (stainless steel)
- Raw-water washdown - stainless steel faucet located in cockpit
- Thru hulls - bonding system for underwater thru hull fittings
- Thru hulls - cast bronze thru hulls (below waterline)
- Thru hulls - cast stainless steel thru hulls (above waterline)
- Transducer pocket in hull bottom for flush mounting a B275 transducer
- Trim tabs - electric trim tabs with indicator (Auto Glide, Dynamic Running Surface, dual ram)
- Switch panel - livewell pump/lighting and fish boxes

Theft Deterrent System with Remote Connectivity

- Anti-theft security key fob with Engine Immobilization and auto GEO fence
- Boston Whaler Proprietary Vessel Monitoring System
- Cellular and Satellite 24-hour monitoring system providing world-wide coverage
- Monitor engines, tanks, batteries, shore power and high-water sensor with alert notification
- Remote control of cabin and cockpit air-conditioning, lighting circuits and chiller system if equipped
- Telematics tracking system with GeoFence Alert Notification
- Free 3 year monitoring/control subscription included

Stereo/Infotainment Systems

- Stereo - FUSION® full-function RA770 stereo head unit flush mounted in the acrylic dash (FUSION® integration

into Raymarine Navigation Package and ethernet connection to cabin RA770 for PartyBus), JL Audio Digital Signal Processor (DSP) system with custom tuned audio, optimized for audiophile experience

- Helm deck – JL stereo speakers M6 7.7" coax classic white/gun metal grill on port and starboard consoles reflecting off the windshield (2) and in aft part of hardtop (2), JL M6 10" subwoofer, Stereo remote control (Fusion Bluetooth remote on port lounge area that controls the stereo and volume of the helm deck speakers)
- Bow – JL M6 6.5" coax classic white/gun metal grill in bow lounge area, Stereo remote control (Fusion Bluetooth remote that controls the stereo and volume of the bow speaker)
- Cockpit – JL 7.7" coax classic white/gun metal grill (2) in aft corners , Stereo remote control (Fusion Bluetooth remote, that controls the stereo and volume of the cockpit speakers)
- Cabin Main Area – Fusion RA770 Stereo head unit with Aux for TV audio integration, connected to cockpit sound system for Fusion PartyBus Mode, Fusion Panel Sound bar speaker system, TV 32" flat screen LED HDTV with Apple TV
- Cabin Forward – Fusion Panel Stereo with Aux in for TV audio integration, 24" flat screen LED HDTV with Apple TV Integration

16" Ray Marine Axiom XL Electronics

- Dash surface – custom black acrylic integrated with switch panels and flush mounting of XL displays
- Raymarine Axiom XL 16" screen (GPS, chart plotter, fishfinder)
- Raymarine Axiom XL 16" screen (additional display)
- Raymarine 1000-watt recessed thru-hull transducer (B275)
- Raymarine Sounder RV-1000 with RV-100 Realvision 3D transom mounted transducer
- Raymarine Ray63 VHF system with wireless Ray mic at helm
- Navionics Chart Card: North America/Canada

Open Windshield Hardtop System

- Canvas (side and aft rigid Makrolon® polycarbonate weather enclosure from door to cockpit) (white or black Stamoid® depending on frame color selection) (with storage in aft portion of hardtop)
- Custom painted integrated aluminum hardtop/windshield frame (white or black depending on frame color selection)
- Deck hatches – with opening integrated into hardtop (2)
- Handhold along hardtop for egress to foredeck
- Ladder access to hardtop (white or black depending on frame color selection)
- Lighting – LED blue/white overhead lights; (3) across aft end of hardtop (2) mid over Wet Bar and seating, (1) forward center

- Lighting – LED blue companionway light (2) at helm deck step and cabin entry steps (turned on via solar sensor)
- Lighting – LED red/white map overhead light (1)
- Lighting – LED flood lights at cockpit (2) and bow (1)
- Lighting – LED navigation lights (stainless steel) (recessed in hardtop)
- Outrigger ready
- Rod holders on port and starboard ladder supports (6) (white or black depending on frame color selection)
- Side glass (open tempered)
- Sunshade (cockpit) (telescoping polished stainless-steel frame retracts and deploys electrically) (black Sunbrella® canvas)
- Windshield – full height, single piece front tempered glass providing unobstructed visibility, with dual electric actuated vents and independent control
- Windshield wipers – (2) pantograph, with intermittent wash system

Starboard Helm Deck Wet Bar

- 120-V receptacle
- Countertop – solid surface with hinged, deployable extension, integrated into cockpit seat backrest
- Handrail (stainless steel)
- Refrigerator – stainless steel, dual voltage 12-V / 120-V, 2.3 cubic ft.
- Sink – with filler cutting board (fiberglass) (hot and cold water)
- Storage – pullout 3 drawer storage compartment under counter, forward of the refrigerator (replaced by refrigerator, freezer or ice maker options)
- Storage – drawer/ box compartment on aft wall under the counter
- Storage – wine rack
- Wood accents (Zebra wood faced accent surface)

Starboard Cockpit Prep & Entertainment Centre

- Additional solid surface countertop available in prep area when aft facing seatback is folded down
- Pull-out footrest for aft-facing Mezzanine seating
- Pull-out prep area with solid surface counter (when hinged up reveals an electric grill and storage compartment)

Port Cockpit Cooler

- Insulated 220qt built-in cooler/storage under aft port seating with dual access
- Flip up footrest for aft facing 2-person mezzanine seat

Cabin Mid-Berth

- 120-V receptacle
- Air-conditioning vents from main cabin (16,000 BTU unit)
- Carbon monoxide detector
- Flooring and entry steps – solid teak with satin finish
- Lighting – LED reading lights (2)
- Lighting – LED white overhead lights with dimmer switches (1 in main area, 2 in bed area)

- Lighting – LED RGB diffused courtesy lighting with dimmer control
- Mattress – 6” thick Premium Handcraft® pillowtop innerspring with hinged access to storage
- Privacy curtain
- Storage – large storage compartment under the mattress with a powered access hatch, providing easy access to storage drawers and large molded in fiberglass trunk
- Storage – hanging locker (cedar lined) with removable shelves and galley dish storage with door activated light
- Vimar single USB receptacle
- Mid berth comes with fitted sheet, comforter and two regular size pillowcases

Disclaimer

The Company offers the details of this vessel in good faith but cannot guarantee or warrant the accuracy of this information nor warrant the condition of the vessel. A buyer should instruct his agents, or his surveyors, to investigate such details as the buyer desires validated. This vessel is offered subject to prior sale, price change, or withdrawal without notice.

























