



Floss'd at Sea

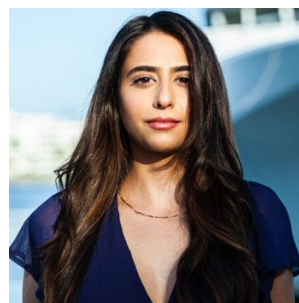
33' (10.06m) 2020 Blackfin 332 CC
Fort Lauderdale Florida United States



OVERVIEW

Manufacturer:	Blackfin	Hull Material:	Fiberglass
Engines:	2 Mercury	Cruise Speed:	33
Engine Model:		Max Speed:	45
Engine HP:	400	Cabins/Heads:	/ 1
Beam:	10' 6"	Fuel Type:	Gas/Petrol
Max Draft:	2' 9"	Fuel:	315 G (1192.4 L)
Water:	50 G (189.27 L)		

\$385,000



Paulina Chandler paulina@rickobeyyachtsales.com

1-561-704-1680

Data Sheet

Category: Center Consoles
Condition: Used
Model Year: 2020
Beam: 10'6" (3.20m)
Max Draft: 2' 9" (0.84m)
Min Draft: 1' 11" (0.58m)
LOA: 33' (10.06m)
Heads: 1

Maximum Speed: 45 Cruise Speed: 33
Fuel Type: Gas/Petrol
Deadrise: 23°
Hull Material: Fiberglass
Bridge Clearance: 10' 6

Dry Weight: 10500 lbs
Fuel Tank: 315 gal (1192.4 liters)
Fresh Water: 50 gal (189.27 liters)
HIN/IMO: BKFBC119H920

Engines/Generators

Engine 1

Mercury
Outboard
400HP
Fuel: Gas/Petrol
Hours: 285

Engine 2

Mercury
Outboard
400HP
Fuel: Gas/Petrol
Hours: 285

Summary/Description

This 332 combines rugged fishability with stylish looks for family fun and cruising. This boat pairs fishing capabilities with luxury cruising. Blackfin offers one of the best rides in its class.

This 332 combines rugged fishability with stylish looks for family fun and cruising. This boat pairs fishing capabilities with luxury cruising. Blackfin offers one of the best rides in its class. This boat is powered by twin 400 Mercury engines that do not disappoint. It's hull design provides an efficient, smooth, and secure ride. Enjoy all the standard features that this Blackfin is equipped with along with added features like: Extra Rod Holders, a backup gps, and a 3500ft Sonar with 3D sonar scan which allows you to easier understand where fish and fish holding structures are in relation to your boat. This Blackfin is also complete with outlets for your electric reel usage on the forward port and starboard side. This BlackFin is a family fishers joy and will be lovingly passed down to its next owner.

Manufacturer Provided Description

The 332 CC: What legends are made of. This center console features a LOA of 33'2", and offers one of the smoothest rides in it's class. Loaded with standard features and amenities, you'll have everything you need to enjoy your time on the water.

Cockpit

- Baitwell Insulated, Transom w/Cutting Board Lid, Blue/White Light & See Thru Face - (35 Gal.)
- Baitwell Insulated, Leaning Post w/Cutting Board Lid, Blue/White Light & See Thru Face - (20 Gal.)
- Cockpit Table
- Courtesy Lighting, Blue/White, LED 12V
- Drink Holders, Stainless Steel (20)
- Faucet, Wash Down, (Fresh Water), Anchor Locker
- Faucet, Wash Down, (Fresh Water), Aft Cockpit
- Faucet, Wash Down, (Raw Water), Aft Cockpit
- Fiberglass Cockpit Liner w/Non-Skid and Self Bailing
- Fish Boxes, (100) Gallon In-Floor Insulated (2)
- Fiberglass Hardtop System w/Powder-Coated Aluminum(White or Black) Framework, Tempered Glass Windshield w/Wiper & Power Actuated Vent, Storage, LED Overhead Lighting (Red/White) (4) & LED Spreader Lights (6)
- Grab Rail, Recessed Gunnel, Stainless Steel
- Leaning Post, Fiberglass w/ Pull-Out/Removable Yeti (45 Qt.) Coolers (2), SS Sink (2) w/Pull-Out Sprayer, Storage Drawers (2) & Slide Out w/Tackle Utility Boxes (4)
- Macerated Pump-Outs, for Fish Boxes (2)
- Outlet, Dual 12V w/USB (4)
- Pressurized Water, Fresh
- Rod Holders, Stainless Steel Gunnel Mounted (6)
- Rod Holders, Stainless Steel Transom Mounted (4)
- Rod Holders, Hard Top, White or Black (6)
- Rod Racks, Under Gunnel - Stbd
- Rod Storage, Lockable - Port and Starboard Combings
- Stereo Upgrade Package, Includes (6) 7.7" JL Speakers, (2) Subwoofers, 5/2-Channel Amplifiers & LED Speaker Lights
- Storage/Cooler, Bow Insulated (2) w/Overboard Drains & Light

- Storage, Console Forward Lounge - Multi-purpose
- Storage, Bow, In-Floor
- Toe Rails, Stainless Steel
- Transom Shower w/Pressurized Water (Cold Only)

Helm

- Compass
- Joystick
- Digital Engine Monitoring System
- Elevated Helm Platform, Foldaway
- MP3 Adapter
- Outlet, Dual 12V w/USB
- Steering Wheel, Stainless Steel with Urethane Grip
- Steering, Power Assisted
- Steering, Tilt
- Switches, Lighted Weatherproof

Hull and Deck

- ACT (Advanced Carbon Fiber Technology) - Hull Laminate
- Aft Hawse Pipes with Tie-off cleats, Stainless Steel (2)
- Anchor Windlass w/ SS Anchor and Through Hull Roller Hardware
- Barrier Coat, Vinylester
- Black Rub Rail, Heavy Duty w/Stainless Steel Insert
- Bow & Stern Eyes, Stainless Steel, w/SS Backing Plate
- Cleats, Pull Up Stainless Steel (6)
- Closed Cell, High Density Structural Foam Floatation
- CMT (Closed Mold Technology) - Finished Fiberglass Hatches
- CRT (Core Rigid Technology) - Molded composite Stringer grid
- Door, Walk-Thru at Transom
- Dive / Boarding Door
- Drain Plug, Brass Garboard
- Finished Fiberglass Bilge and Storage Compartments
- Helm Floor Pad - Sea Dek
- High Density, Closed Cell, Structural Foam Floatation
- Horn, Electric Flush Mount
- Lifetime Limited Hull Warranty
- Lights, Navigation
- NMMA Certified
- Storage, Anchor w/Fiberglass Hatch (Drains Overboard)
- Swim Ladder, Telescoping & Recessed, Stern w/Fiberglass Hatch
- Swim Platform, Integral
- Thru Hulls, Stainless Steel Above Waterline
- Transhield Cover

Disclaimer

The company offers the details of this vessel in good faith but cannot guarantee or warrant the accuracy of this information nor warrant the condition of the vessel. A buyer should instruct his agents, or his surveyors, to investigate such details as the buyer desires validated. This vessel is offered subject to prior sale, price change or withdrawal without notice.





