

2024

90' (27.43m) 2024 Viking Convertible
New Gretna New Jersey United States



OVERVIEW

Manufacturer: *Viking*

Engines: 2 MTU

Engine Model: SERIES 2000-V16 M96L 2635

Engine HP: 2635

Beam: 19' 3"

Max Draft: 5' 11"

Water: 480 G (1817 L)

Hull Material: Fiberglass

Cruise Speed:

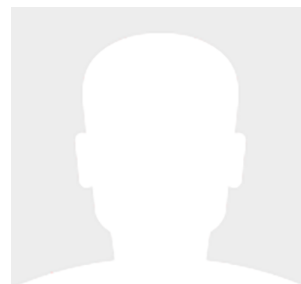
Max Speed:

Cabins/Heads: 6 / 6

Fuel Type: Diesel

Fuel: 3801 G (14388.34 L)

Call for Price





Data Sheet

Category: Convertible Boats
Condition: New
Model Year: 2024
Beam: 19'3" (5.87m)
Max Draft: 5' 11" (1.80m)
LOA: 90' (27.43m)
LWL: 79' 2" (24.13m)
Cabins: 6
Heads: 6

Fuel Type: Diesel
Deadrise: 12.4°
Hull Material: Fiberglass
Hull Finish: Gelcoat

Displacement: 193490 lbs
Fuel Tank: 3801 gal (14388.34 liters)
Fresh Water: 480 gal (1817 liters)
Holding Tank: 282 gal (1067.49 liters)
HIN/IMO: 90C-TBD

Engines/Generators

Engine 1

MTU
SERIES 2000-V16 M96L 2635
Inboard
2635HP
Fuel: Diesel
Year: 2024
Location: Starboard

Engine 2

MTU
SERIES 2000-V16 M96L 2635
Inboard
2635HP
Fuel: Diesel
Year: 2024
Location: Port



Summary/Description

2024 Viking 90 Convertible: Viking owners and enthusiasts will be enamored with the accommodations of the new Viking 90. The combination of interior volume, a flowing open layout and several design nuances create a fresh soothing ambiance throughout the vast living spaces.

This Viking 90' offers five guest staterooms, each with its own private head and shower, crew quarters with immediate access to the engineroom, a pantry with an additional crew berth and a day head. Spanning the 23-foot, 2-inch beam, the owner's suite boasts a king walkaround bed, a walk-in closet, a dressing table, a lounge area, a full-size credenza under a bulkhead-mounted 65-inch HD TV and his-and-hers private facilities with separate access.

Manufacturer Description

Three Models

The 90's profile represents a synthesis of design traits from the 92, 80 and other modern Viking sportfishing yachts, as well as subtle motor yacht influences. "We designed the 90 to be as sleek as possible, stressing a low profile and clean lines," says Viking Design Manager David Wilson. "We also brought several refinements to the exterior that enhance that lean, sexy look." Carefully placed feature lines, deckhouse windows and portlights with chamfered edges and Viking's signature hull-side vents are just a few of the 90's aesthetic high points.

Viking will offer three models of the 90 (Open Bridge, Enclosed Bridge and Sky Bridge), all utilizing a spacious six-stateroom accommodation plan highlighted by a full-beam master suite. "We feel the open bridge 90 is going to be a huge hit, particularly with our 80 owners," says Pat. "We're providing a larger Viking that fishes just as well as their 80 and has the same type of performance and nimble maneuverability."

The Open and Enclosed Bridge 90 can be outfitted with a tuna tower from Palm Beach Towers (PBT), and all three models can be equipped with a custom electronics, communications and entertainment package from Atlantic Marine Electronics (AME). Both Viking subsidiaries, AME and PBT ensure turnkey delivery.

Looking Aft

The cockpit and dual mezzanine stress a sense of togetherness with a focus aft – where the action is. From the salon, a 40-inch-wide electric-powered single door opens with a touch of a button. The upper mezzanine's port side is home to an L-shaped aft-facing lounge with available air-conditioned backrest and a teak table. On the starboard side, there's a versatile cooking and refreshment hub (with an additional aft-facing seat) that can be personalized to the owner's liking with a grill and icemaker or refrigerator.

A large lounge on the lower mezzanine looks upon the cockpit, with its shapely fiberglass module holding storage underneath and tackle drawers on each side. The mezzanine provides centerline engine access to the crew quarters and engineroom, and is also home to an oversized freezer (port) and two refrigerated boxes (starboard).

The cockpit measures 224 square feet, with a 203-gallon transom fishbox/live well and a pair of full-length 103-gallon insulated in-deck fishboxes. Access to the Seakeeper 35 is provided by a single powered hatch on centerline, a watertight design introduced with recent Viking 80 demonstrator boats, and the cockpit sole is built with reinforcement for a fighting chair, rocket launcher or table.



Living Large

Viking owners and enthusiasts will be enamored with the accommodations of the new Viking 90. The combination of interior volume, a flowing open layout and several design nuances create a fresh soothing ambiance throughout the vast living spaces. Stepping into the salon, a new horizontal grain natural walnut interior greets you with warmth and style. Interior doors featuring both horizontal and vertical grains as well as ebony inlays add to the visual appeal. Guests will appreciate the spacious lounge that begins at the salon door and wraps around the port side. A starboard-side entertainment center features a 65-inch pop-up HD TV. Forward, the large starboard wraparound galley is open to a raised U-shaped dinette to port (with rod storage below).

The Viking 90 offers five guest staterooms, each with its own private head and shower, crew quarters with immediate access to the engine room, a pantry with an additional crew berth and a day head. Spanning the 23-foot, 2-inch beam, the owner's suite boasts a king walkaround bed, a walk-in closet, a dressing table, a lounge area, a full-size credenza under a bulkhead-mounted 65-inch HD TV and his-and-hers private facilities with separate access.

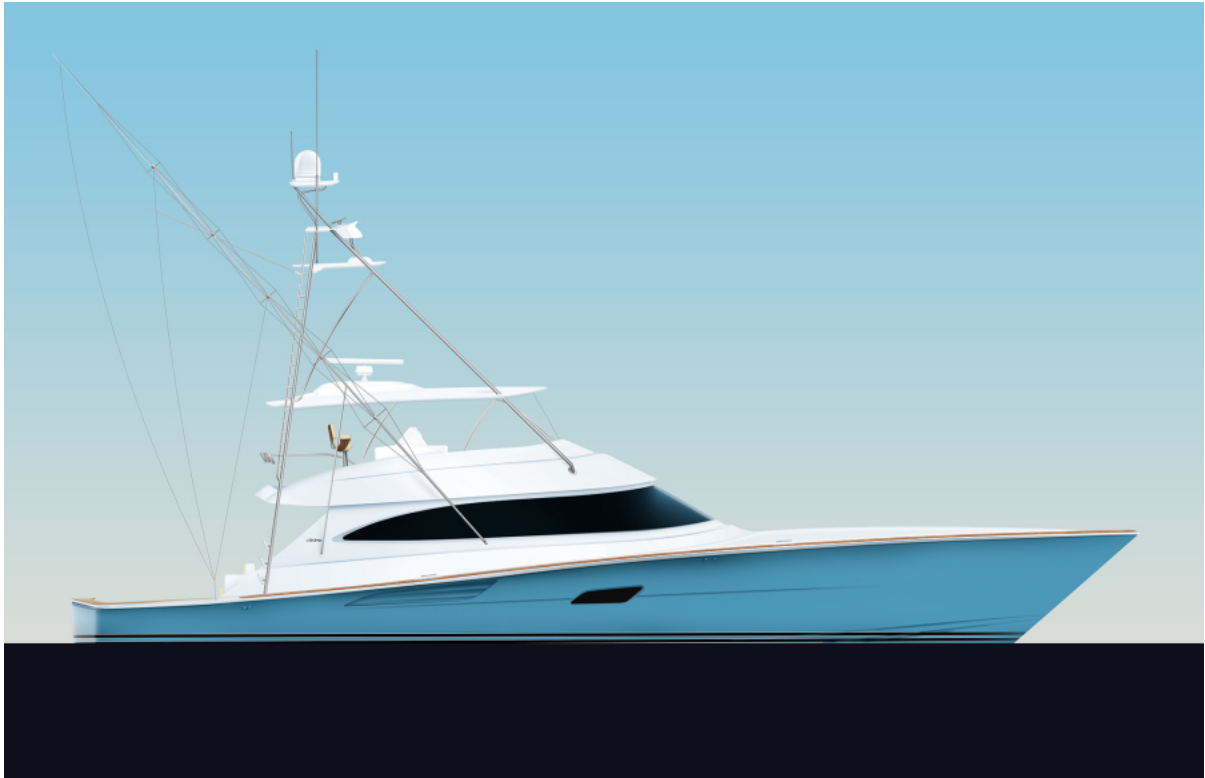
We invite you to contact HMY Yacht Sales, your Viking dealer for a sea trial today!

Photography Note

Artist rendition profile provided by manufacturer.

Disclaimer

The Company offers the details of this vessel in good faith but cannot guarantee or warrant the accuracy of this information nor warrant the condition of the vessel. A buyer should instruct his agents, or his surveyors, to investigate such details as the buyer desires validated. This vessel is offered subject to prior sale, price change, or withdrawal without notice.



2024 Viking 90 Convertible - Exterior Profile 2024 Viking 90 Convertible