



2024

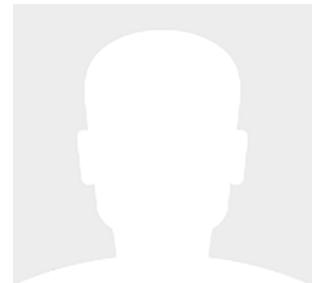
68' (20.73m) 2024 Viking Enclosed Bridge (TBD)
New Gretna New Jersey United States



OVERVIEW

Manufacturer:	Viking	Hull Material:	Fiberglass
Engines:	2 MTU	Cruise Speed:	
Engine Model:	V12 M96X	Max Speed:	
Engine HP:	0	Cabins/Heads:	4 / 4
Beam:	19' 2"	Fuel Type:	Diesel
Max Draft:	5' 5"	Fuel:	2060 G (7797.94 L)
Water:	344 G (1302.18 L)		

Call for Price





Data Sheet

Category: Sport Fishing
Condition: New
Model Year: 2024
Beam: 19'2" (5.84m)
Max Draft: 5' 5" (1.65m)
LOA: 68' (20.73m)
Cabins: 4
Heads: 4

Fuel Type: Diesel
Hull Material: Fiberglass

Gross Tonnage: 115306
lbs
Fuel Tank: 2060 gal (7797.94 liters)
Fresh Water: 344 gal (1302.18 liters)
Builder: Viking Yachts
HIN/IMO: VKG000680024
Stock #: J.J

Engines/Generators

Engine 1

MTU
V12 M96X
Inboard
Fuel: Diesel

Engine 2

MTU
V12 M96X
Inboard
Fuel: Diesel



Summary/Description

2022 Viking 68 Enclosed Bridge For decades, Viking has led the industry in the design and development of the enclosed bridge, and our new 68 EB serves as the latest example of this expertise.

For decades, Viking has led the industry in the design and development of the enclosed bridge, and our new 2022 68 Enclosed Bridge serves as the latest example of this expertise. Captains and owners can be comfortably out of the weather in the climate-controlled command center of the 68 EB. The wraparound windshield gives you excellent sightlines in all directions. The raised helm console, which mimics the shape of the windshield, holds the electronics components, engine controls and VIPER (Viking Independent Programmable Electro-Hydraulic Rudder) steering. Its black Ultraleather surfaces and visor reduce glare. The enclosed bridge also serves as the home for a second salon, a private retreat with an L-shaped lounge, refrigerator, walnut cocktail table and entertainment center that includes a 24-inch TV and stereo. The walnut hardwoods and cabinetry combined with the natural light flowing through the windows contribute to a space that is warm, open and airy.

Manufacturer Provided Description

For decades, Viking has led the industry in the design and development of the enclosed bridge, and our new 68 EB serves as the latest example of this expertise. Captains and owners can be comfortably out of the weather in the climate-controlled command center of the 68 EB. The wraparound windshield gives you excellent sightlines in all directions. The raised helm console, which mimics the shape of the windshield, holds the electronics components, engine controls and VIPER (Viking Independent Programmable Electro-Hydraulic Rudder) steering. Its black Ultraleather surfaces and visor reduce glare.

The enclosed bridge also serves as the home for a second salon, a private retreat with an L-shaped lounge, refrigerator, walnut cocktail table and entertainment center that includes a 24-inch TV and stereo. The walnut hardwoods and cabinetry combined with the natural light flowing through the windows contribute to a space that is warm, open and airy. A weatherproof hinged lockable exterior door leads to the pod-style aft docking station complete with single-lever controls and engine start/stop switches. There is also a molded fiberglass seat on the aft deck with removable cushions and storage underneath. The open and enclosed bridge models of the 68 Convertible share the same salon, island galley and four-stateroom layout, but the EB model also has a custom polished stainless steel spiral staircase that joins the main deck salon and enclosed bridge. A high-gloss walnut finish decorates the entire interior, and large hull-side windows draw in natural light.

As with all Viking yachts, custom electronic packages and tuna towers can be ordered and professionally installed by our sister companies Atlantic Marine Electronics and Palm Beach Towers respectively for turn-key delivery and utmost satisfaction and performance.

We invite you to contact HMY Yacht Sales, your Viking dealer to learn more about this exciting and beautiful VIKING YACHTS 68 ENCLOSED BRIDGE SPORTFISH.

Photography Note

All photos are manufacturer provided.



Disclaimer

The company offers the details of this vessel in good faith but cannot guarantee or warrant the accuracy of this information nor warrant the condition of the vessel. A buyer should instruct his agents, or his surveyors, to investigate such details as the buyer desires validated. This vessel is offered subject to prior sale, price change or withdrawal without notice.



Viking 68 - Starboard Profile (sistership) 2022 Viking 68 Enclosed Bridge



Viking 68 - Bow Profile 2022 Viking 68 Enclosed Bridge



Viking 68 - Transom Profile 2022 Viking 68 Enclosed Bridge



Viking 68 - Salon 2022 Viking 68 Enclosed Bridge



Viking 68 - Galley 2022 Viking 68 Enclosed Bridge



Viking 68 - Dinette 2022 Viking 68 Enclosed Bridge



Viking 68 - Helm Station 2022 Viking 68 Enclosed Bridge



Viking 68 - Bridge Seating 2022 Viking 68 Enclosed Bridge



Viking 68 - VIP Stateroom 2022 Viking 68 Enclosed Bridge



Viking 68 - VIP Head 2022 Viking 68 Enclosed Bridge



Viking 68 - Guest Stateroom 2022 Viking 68 Enclosed Bridge



Viking 68 - Guest Head 2022 Viking 68 Enclosed Bridge



Viking 68 - Master Stateroom 2022 Viking 68 Enclosed Bridge



Viking 68 - Master Head 2022 Viking 68 Enclosed Bridge



Viking 68 - Washer/Dryer 2022 Viking 68 Enclosed Bridge



Viking 68 - Companionway 2022 Viking 68 Enclosed Bridge



Viking 68 - #2 Guest Stateroom 2022 Viking 68 Enclosed Bridge



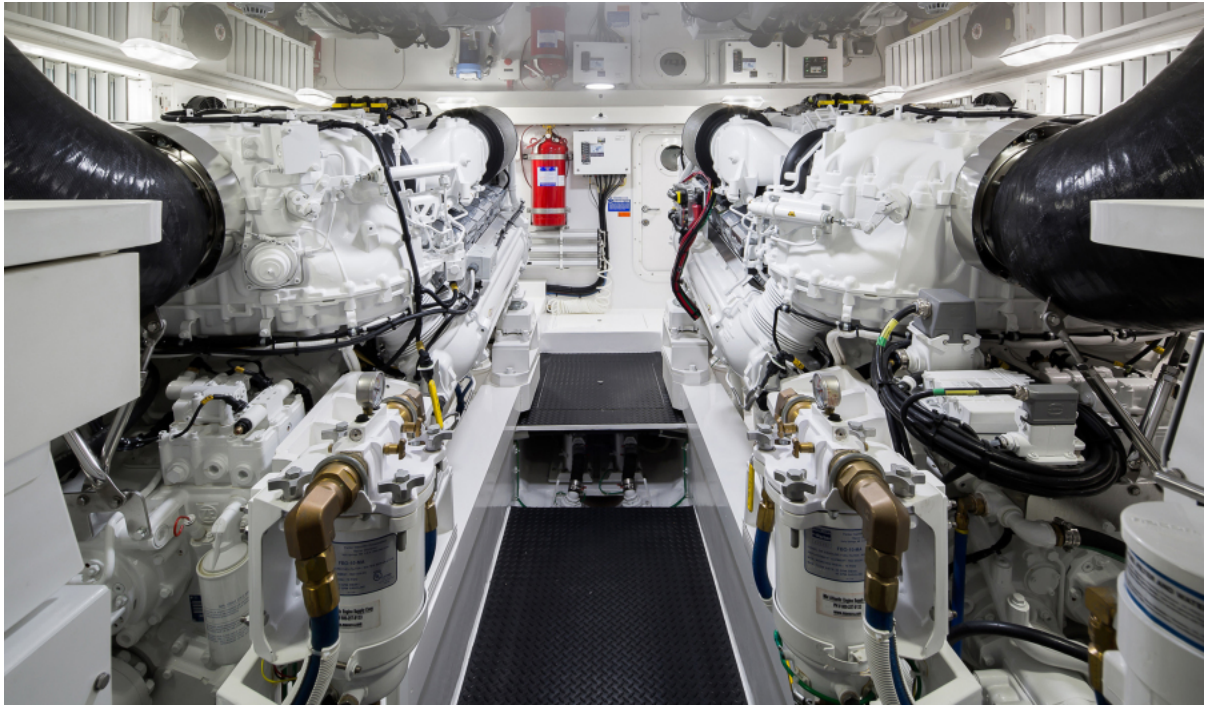
Viking 68 - Companionway 2022 Viking 68 Enclosed Bridge



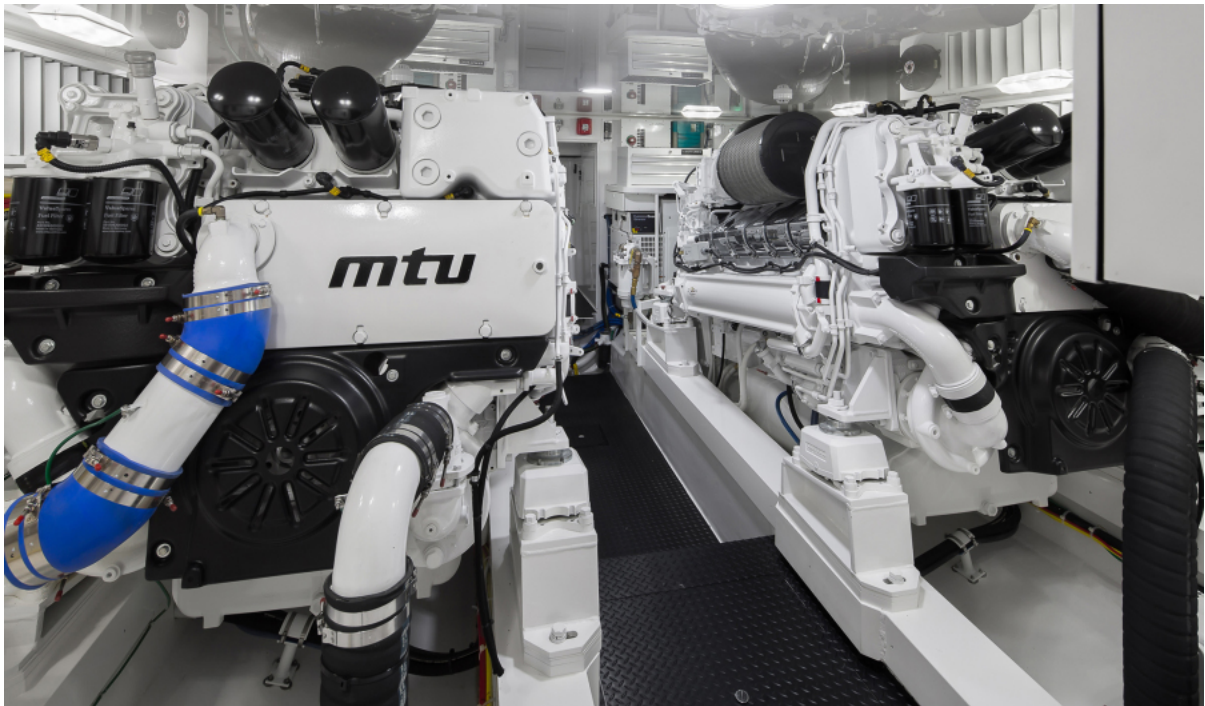
Viking 68 - Walk-In Pantry 2022 Viking 68 Enclosed Bridge



Viking 68 - Day Head 2022 Viking 68 Enclosed Bridge



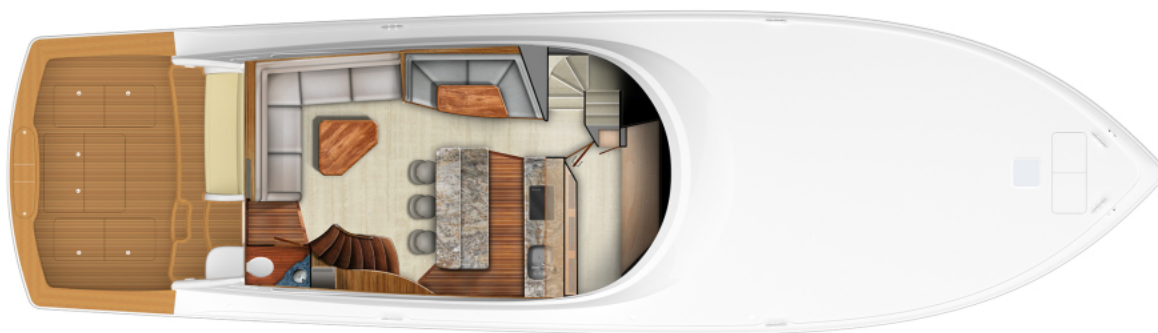
Viking 68 - Engine Room 2022 Viking 68 Enclosed Bridge



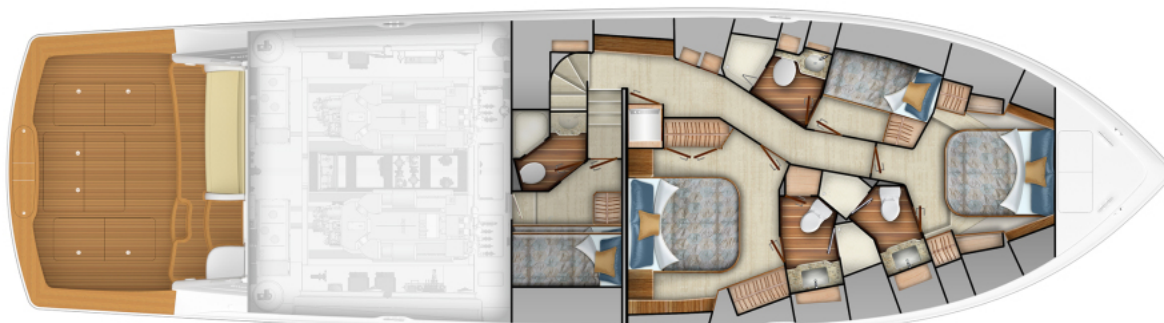
Viking 68 - Engine Room 2022 Viking 68 Enclosed Bridge



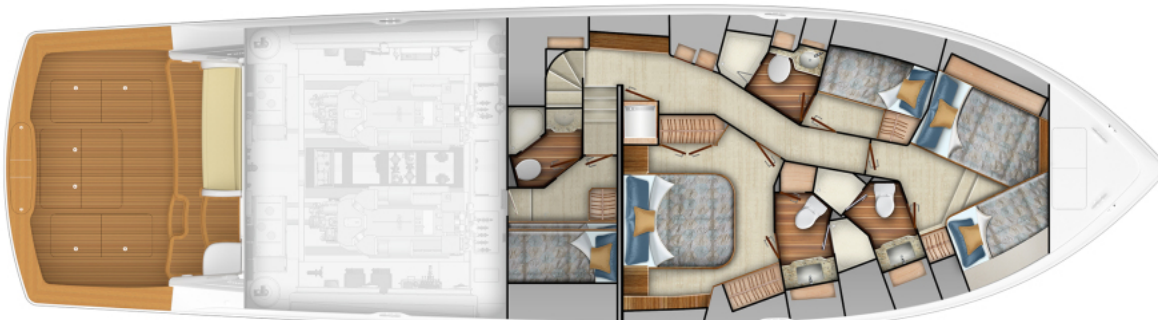
Viking 68 - Bridge Layout 2022 Viking 68 Enclosed Bridge



Viking 68 - Salon Layout 2022 Viking 68 Enclosed Bridge



Viking 68 - Option #1 Stateroom Layout 2022 Viking 68 Enclosed Bridge



Viking 68 - Option #2 Crossover Layout 2022 Viking 68 Enclosed Bridge