



2024

54' (16.46m) 2024 Viking Convertible (TBD)
New Gretna New Jersey United States



OVERVIEW

Manufacturer:	Viking	Hull Material:	Fiberglass
Engines:	2 MAN	Cruise Speed:	
Engine Model:	V12	Max Speed:	
Engine HP:	1550	Cabins/Heads:	3 / 2
Beam:	17' 8"	Fuel Type:	Diesel
Max Draft:	4' 11"	Fuel:	1535 G (5810.6 L)
Water:	198 G (749.51 L)		

Call for Price





Data Sheet

Category: Sport Fishing
Subcategory: Convertible Boats
Condition: New
Model Year: 2024
Beam: 17'8" (5.38m)
Max Draft: 4' 11" (1.50m)
LOA: 54' 6" (16.61m)
Cabins: 3
Heads: 2

Fuel Type: Diesel
Hull Material: Fiberglass

Gross Tonnage: 75026
Fuel Tank: 1535 gal (5810.6 liters)
Fresh Water: 198 gal (749.51 liters)
Holding Tank: 154 gal (582.95 liters)
Builder: Viking Yachts
HIN/IMO: VKG000540024
Stock #: J.J

Engines/Generators

Engine 1

MAN
V12
Inboard
1550HP
Fuel: Diesel

Engine 2

MAN
V12
Inboard
1550HP
Fuel: Diesel



Summary/Description

2022 VIKING 54 CONVERTIBLE

Manufactures Description

The Viking 54 Convertible

Viking reaffirms its domination of the mid-size convertible with the new Viking 54.

Following our mantra to build a better boat every day, Viking has consistently brought new and exciting yachts to you for 56 years. With multiple generations in various size ranges, our commitment to our customers and level of expertise shine through with every new model.

That proficiency is particularly strong in the 50-to-60-foot sportfish boat genre, where Viking has introduced 10 models in the past two decades. This legacy fleet consists of more than 600 Vikings and includes ground-breaking models such as the 60 and 55, two renditions of the 52 Convertible and the first-generation 54.

"No one has done a better job in this segment of the market," says Viking President and CEO Pat Healey. "Over the last 20 years, we've designed more boats from 50 to 60 feet than any other manufacturer in the industry. This is absolutely our sweet spot."

Now, the New Jersey boatbuilder reaffirms its domination of the mid-size convertible with the new Viking 54. The three-stateroom, two-head open bridge yacht pushes the owner/operator convertible to the highest levels of engineering, performance, accommodations and sportfishing capabilities. The Viking 54 Convertible will make its world premiere at the Fort Lauderdale International Boat Show Oct. 28 through November 1.

Viking Tradition

The Viking 54 sets new milestones of innovation while integrating ideas garnered from sales and owner feedback, as well as thousands of hours logged by our Viking demo teams on the tournament trail. "We're in a constant state of refinement," says Viking Design Manager David Wilson. "Everything from interior and exterior design and accommodations to performance, fishability and ease of operation are evolving."

The 54 presents an eye-pleasing profile that's unmistakably Viking, with signature design traits such as a gently sloping unbroken S-shaped sheer, aggressively raked stem, double chines, hull-side vents and deftly placed exterior feature lines.

Using Computational Fluid Dynamics (CFD) software, the Viking Design and Engineering Department has optimized the 54's running surface for maximum performance. Now an integral part of the design process, our in-house CFD allows us to run numerous virtual sea trials to fine-tune the shape of the hull bottom for increased efficiency. The hull is built with an engineered composite of fiberglass fabrics and coring that's vacuum-infused with Vinylester resin.

Business End



The 54's business end offers more space than any other boat in its class. The 154-square-foot unobstructed cockpit comes to the fishing wars with the ammunition to put you in the winner's circle, starting with molded non-skid on the cockpit sole for grippy footing (even when wet) and large scuppers to drain water quickly.

A walk-through transom door with a lift gate takes the work out of boating a trophy catch. And when you're release-fishing, a three-foot reach to the waterline means you can quickly turn a billfish loose. Anglers will appreciate Viking's signature rounded cockpit coamings and toe kick for those lengthy stand-up battles. Flush rod holders recessed stainless-steel hawse pipes and cleats keep the cockpit clear.

Multiple insulated fish boxes of various capacities increase flexibility. The raised transom box can be used as a live well, fish box or general storage. A full-length in-deck fish box spans the starboard side, while the port side holds two storage compartments with the forward serving as an optional live well. A mounting plate laminated into the sole will anchor the mightiest of fighting chairs, and you can also opt for a rocket launcher or table. A single centerline lazarette hatch (available with power actuation) opens nearly 90 degrees for full viewability and access to the available Seakeeper as well as the steering, trim tabs and drain pumps.

Guests will be enamored with the raised observation mezzanine (pioneered by Viking) as they watch the action in comfort, shaded by the flybridge overhang. Smart storage solutions abound, with freezer and cooler space under the mezzanine for baits and drinks and a tackle cabinet on the starboard side. The inboard portion of the mezzanine provides access to the engine room. An anodized aluminum ladder with nonslip treads (and a handrail at the top) provides secure egress to the flybridge.

View from Above

A streamlined walk-around center console provides 360-degree sightlines. Touchscreen electronics displays and a row of Bocatech switches with power status LED rings are flush mounted in the helm dash. Their installation and positioning heighten viewability and ease of access.

A stainless-steel steering wheel and single-lever electronic controls are mounted on a raised teak helm pod. Optimus Electronic Power Steering delivers precise maneuverability and finger-tip control. The console itself is designed with toe kick all around for better balance and increased walking area. The helm and companion chair (with teak ladder backs) supply ample comfort for those long rides to the canyons, and guests can take it easy in the port or starboard lounges (with forward-facing backrests) or forward console seat.

The 54 can be outfitted with a custom designed and fabricated Palm Beach Towers tuna tower and equipped with navigation, communication, and entertainment systems from Atlantic Marine Electronics. These two Viking subsidiaries play critical roles in making our yachts turnkey ready.

Interior Delights

Making full use of the 17'8" beam, the 54's layout accentuates the impressive size of her interior. The key to the configuration is the uninterrupted companionway that stretches from the starboard-side salon door all the way to the forepeak. The lounge area and galley are to port, while the dinette is to starboard.

High-gloss teak or walnut is offered for the 54's interior, and a satin finish is optional. Premium wall-to-wall carpeting and furnishings can be found throughout the climate-controlled living area. Air conditioning flows quietly from valances for comfortable cooling and thorough distribution. A hi-lo mappa burl cocktail table joins the L-shaped lounge with storage below.



A 49" HD TV is nested on the forward starboard bulkhead above the dinette, which is appointed with a high-gloss mappa burl table and wraparound seating for four. The galley's peninsula countertop features engineered stone with an overhang and two convenient bar stools. The galley is feature-packed with a pair of under-counter Sub-Zero refrigerator/freezer units and storage under the peninsula counter. The opposite counter is home to a stainless-steel sink with garbage disposal and an electric cooktop.

Comfort Zones

The three-stateroom two-head layout includes a master suite to port with a walk-around queen berth sided by nightstands and a credenza to port. There is a large maple-lined storage area beneath the mattress, accessed via a gas piston-assisted lift-up top, and two drawers are integrated into the foot of the bed. A 32-inch HD TV is mounted above a second credenza. A generously proportioned maple-lined hanging locker accommodates a sizeable wardrobe.

The forward stateroom comes standard with a queen berth, but also is available with a crossover berth arrangement. Both plans offer plenty of storage along with a 32" HD TV. The starboard stateroom has upper and lower berths along with a hanging locker and storage under the lower berth. Each stateroom is fully carpeted, with dedicated temperature and stereo controls, speakers, and overhead LED lighting.

The heads feature custom Amtico flooring, a lower vanity, a medicine cabinet with mirrored doors, exhaust fans, air conditioning and electric heads with holding tank and overboard discharge capabilities. Both also boast very large walk-in one-piece fiberglass showers with an expansive glass enclosure and door. Below the detachable shower head, you will find a convenient storage cabinet as well as an integrated fiberglass seat.

Engineering Driven

The optional MAN V12 1550CRM (1550 MHP) diesels power hull No. 1. With this propulsion package, the Viking 54 Convertible will have an estimated cruise speed in the mid-30-knot range with a top end of 40-plus knots depending upon load, sea state and boat condition. A pair of MAN V12 1400CRM (1440 MHP) diesels are standard. All mechanicals and equipment are installed with great attention to detail in an immaculate engine room painted with Snow White Awlgrip for visibility and ease of maintenance.

Photography Note

Photography is manufacture provided.

Disclaimer

The company offers the details of this vessel in good faith but cannot guarantee or warrant the accuracy of this information nor warrant the condition of the vessel. A buyer should instruct his agents, or his surveyors, to investigate such details as the buyer desires validated. This vessel is offered subject to prior sale, price change or withdrawal without notice.



Viking 54 - Exterior Profile 2022 Viking 54 Convertible



Viking 54 - Exterior Profile 2022 Viking 54 Convertible



Viking 54 - Exterior Profile 2022 Viking 54 Convertible



Viking 54 - Cockpit 2022 Viking 54 Convertible



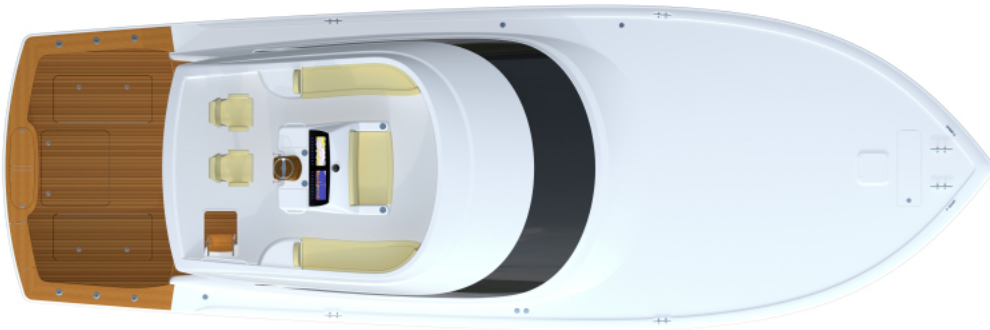
Viking 54 - Salon 2022 Viking 54 Convertible



Viking 54 - Galley 2022 Viking 54 Convertible



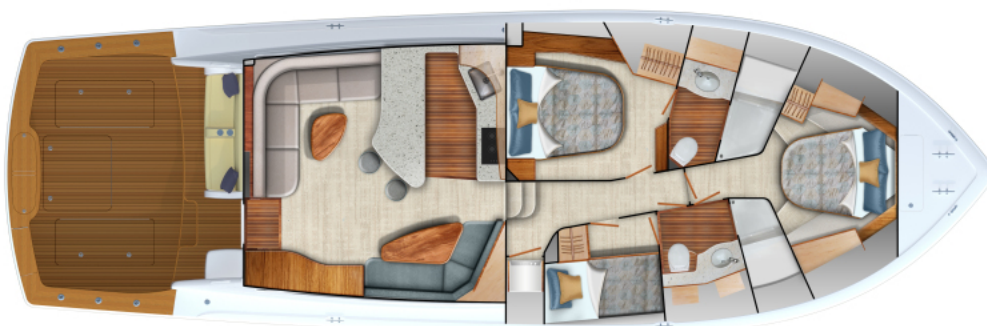
Viking 54 - Head 2022 Viking 54 Convertible



Viking 54 - Bridge Layout 2022 Viking 54 Convertible



Viking 54 - Interior Layout 2022 Viking 54 Convertible



Viking 54 - Interior Layout 2022 Viking 54 Convertible