



Grateful

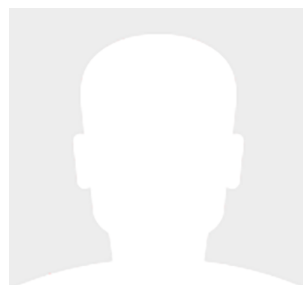
34' (10.36m) 2024 SeaVee
St.Augustine Florida United States



OVERVIEW

\$500,000

Manufacturer:	SeaVee	Hull Material:	Fiberglass
Engines:	4 Mercury	Cruise Speed:	
Engine Model:	400 V10	Max Speed:	
Engine HP:	400	Cabins/Heads:	/
Beam:	10' 0"	Fuel Type:	Gas/Petrol
Max Draft:	1' 8"	Fuel:	328 G (1241.61 L)
Water:	40 G (151.42 L)		



Blake Wintermute Blake@MacGregorYachts.com

1-561-262-7785



Data Sheet

Category: Center Consoles	Fuel Type: Gas/Petrol	Fuel Tank: 328 gal (1241.61 liters)
Condition: Used	Hull Material: Fiberglass	Fresh Water: 40 gal (151.42 liters)
Model Year: 2024		Holding Tank: 14 gal (53 liters)
Beam: 10' (3.05m)		HIN/IMO: SEV000000000
Max Draft: 1' 8" (0.51m)		
LOA: 34' (10.36m)		

Engines/Generators

Engine 1

Mercury
400 V10
Outboard
400HP
298.28KW
Fuel: Gas/Petrol
Hours: 6
Year: 2024
Location: Port

Engine 2

Mercury
400 V10
Outboard
400HP
298.28KW
Fuel: Gas/Petrol
Hours: 6
Year: 2024
Location: Port

Engine 3

Mercury
400 V10
Outboard
400HP
298.28KW
Fuel: Gas/Petrol
Hours: 6
Year: 2024
Location: Starboard

Engine 4

Mercury
400 V10
Outboard
400HP
298.28KW
Fuel: Gas/Petrol
Hours: 6
Year: 2024
Location: Starboard

Summary/Description

This like new 2024 340z is set up for the offshore fishing family. Best of both worlds with forward seating and seakeeper gyro stabilization. With only 6 hours and the upgraded motor package (white mercury v10 400s) will have you and your crew offshore safely and quick.

This like new 2024 340z is set up for the offshore fishing family. Best of both worlds with forward seating and seakeeper gyro stabilization. With only 6 hours and the upgraded motor package (white mercury v10 400s) will have you and your crew offshore safely and quick.

Standard Features

- Bennett Trim Tabs
- Taco Rub Rail (White)
- Fishbox Pump Out Strainer System Dual Box
- Y-Valve for Dual Fishbox Application

Selected Options

- Automatic Engine Flush System- Twin
- Extra Battery, AGM with Two Year Warranty
- Dual Engine Battery Charger, Galvanic Isolator, 40 AMP Inlet, Dual Bank
- Custom Hull Color, Side to Chine - Light Blue
- Fiberglass Molded Key West Hard Top, Includes 6 Rod Holders, Aft & Forward LED Spreader Lights, and Multicolored LED Lights - Powder Coat White
- GemLux Blue Water Outrigger Bases
- 18' Poles Black GemLux Deluxe Carbon Fiber
- (10) Sliding Door Console Rod Holder
- Under Gunnel Lighting
- (2) SeaBlaze LED Bulb Under Water Lights
- Freshwater Wash Down System with Washdown Hose, Nozzle, Console & Stern Sink
- Windlass Anchor System- Includes 300' Rope & Chain, Helm and Anchor Compartment Switches
- SeaKeeper 3DC Gyro w/3 PC1800 Batteries & Dedic Charger (Below Deck Installation)
- Lithium Ion Battery Upgrade for SeaKeeper 2 Systems
- Bow Thruster
- Custom SS Sea Chest Baitwell System- Dual 1500 GHP Pumps (Includes Flush Mounted High Speed Pick Up)
- Transom Baitwell Aquarium Window
- Additional Rod Holders 15 Degree (Gunnel Mounted)
- Additional Rod Holders 30 Degree (Gunnel Mounted)
- (2) Swivel Rod Holder 15 Degree for Electric Reel
- (2) Rod & Cup Holder 316 Stainless Steel 15 Degree
- (2) Electric Reel 30 Amp Outlet Plug with Cover and Breaker
- Molded Forward Seating with Electric Reclining Backrest
- Captains Edition Helm Seat/Prep Station - White
- Twin Seat Tackle Center Backrest Upgrade to High Headrest w/Built-In Armrests
- Fiberglass Cooler w/ Divider, 145qt for Captain's Edition Leaner, with Acrylic/Starboard Sliding Cooler Tray
- Custom Seat Cushion for Sliding Cooler
- Three Panel Polycarbonate Enclosure



- Coaming Bolsters
- Non-Standard Vinyl Main Color or Carbon Fiber Fee

Electronics

- Simrad NSS EVO3S 16" Display w/GPS, Sounder & WI-FI & HDMI Out (C-Map US Included)
- Simrad B275LH-W 1KW CHIRP Thru Hull Transducer
- Simrad Halo 3004 4' Open Array Radar (Includes Bird Plus Mode)
- Simrad Autopilot AP44 for Twin 350HP, Triple or Quad Engines
- Simrad NEP-2 Extension Port
- JL Audio Premium Package with T-Top Speaker Pod -White with Sport Grill
- ICOM M-510 VHF Radio (Black) w/8' Digital Antenna & Flush Mount Kit - White
- Marine Guardian Boat Tether 2.0 Alarm & Tracker, Incl 3 Input Sensors (High Water, Console Door and Clear Electronics Door) 3 Outputs (Siren, Lights & Bilge Pump)

Mechanical Disclaimer

Engine and generator hours are as of the date of the original listing and are a representation of what the listing broker is told by the owner and/or actual reading of the engine hour meters. The broker cannot guarantee the true hours. It is the responsibility of the purchaser and/or his agent to verify engine hours, warranties implied or otherwise and major overhauls as well as all other representations noted on the listing brochure.

Disclaimer

The company offers the details of this vessel in good faith but cannot guarantee or warrant the accuracy of this information nor warrant the condition of the vessel. A buyer should instruct his agents, or his surveyors, to investigate such details as the buyer desires validated. This vessel is offered subject to prior sale, price change or withdrawal without notice.























