



# ECLIPSE 605

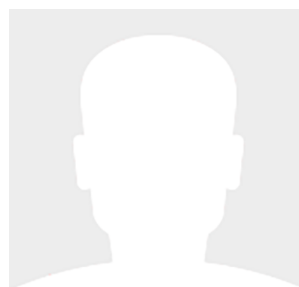
60' (18.29m) 2024 Two Oceans  
Palm Beach Gardens Florida United States



## OVERVIEW

Manufacturer:	Two Oceans	Hull Material:	Composite
Engines:	3 Mercury	Cruise Speed:	
Engine Model:	600hp Verado V12	Max Speed:	
Engine HP:	600	Cabins/Heads:	3 /
Beam:	12' 6"	Fuel Type:	Gas/Petrol
Max Draft:	"	Fuel:	750 G (2839.06 L)
Water:	288 G (1090.2 L)		

## Call for Price





## Data Sheet

Category: Cruisers  
Condition: New  
Model Year: 2024  
Documented Year: 2024  
Beam: 12'6" (3.81m)  
Min Draft: 3' 3" (0.99m)  
LOA: 60' (18.29m)  
Cabins: 3  
Sleeps: 6  
Convertibles: 2  
King Berths: 1

Fuel Type: Gas/Petrol  
Hull Material: Composite  
Hull Shape: Modified Vee  
Hull Finish: Paint  
Hull Warranty: 5 years  
Air Conditioning: Yes  
Bridge Clearance: 13' 5

Displacement: 40957 SeaKeeper: Yes  
Bow Thruster: Yes  
Fuel Tank: 750 gal (2839.06 liters)  
Fresh Water: 288 gal (1090.2 liters)  
Holding Tank: 98 gal (370.97 liters)  
Builder: Two Oceans Marine  
Manufacturing  
Designer: Michael Peters Yacht Design  
HIN/IMO: TOM60500001

## Engines/Generators

### Engine 1

Mercury  
600hp Verado V12  
Outboard  
600HP  
447.42KW  
Fuel: Gas/Petrol  
Year: 2024  
Location: Port

### Engine 2

Mercury  
600hp Verado V12  
Outboard  
600HP  
447.42KW  
Fuel: Gas/Petrol  
Year: 2024  
Location: Middle

### Engine 3

Mercury  
600hp Verado V12  
Outboard  
600HP  
447.42KW  
Fuel: Gas/Petrol  
Year: 2024  
Location: Starboard

### Generator 1

Cummins Onan



## Summary/Description

Two Oceans Marine Manufacturing and HMY Yacht Sales, Inc. (HMY), one of America's largest yacht dealers and brokerage firms, are thrilled to announce the launch of a revolutionary outboard Express Cruising model line — ECLIPSE.

At the intersection of luxury cruising and performance, is the revolutionary outboard-powered ECLIPSE 605. Never seen before speed and seakeeping abilities within the cruising segment are made possible by the patented Michael Peters SVVT hull, mated with the iconic Mercury 600hp V12. Offering a true three stateroom, three head layout, with flush deck entertaining spaces typically found only on a larger yacht, the owner-centric design of the ECLIPSE 605 resets industry standards. With custom level build quality and attention to detail, this 60-foot cruiser stands alone.

## Mechanical Disclaimer

Engine and generator hours are as of the date of the original listing and are a representation of what the listing broker is told by the owner and/or actual reading of the engine hour meters. The broker cannot guarantee the true hours. It is the responsibility of the purchaser and/or his agent to verify engine hours, warranties implied or otherwise and major overhauls as well as all other representations noted on the listing brochure.

## Disclaimer

The company offers the details of this vessel in good faith but cannot guarantee or warrant the accuracy of this information nor warrant the condition of the vessel. A buyer should instruct his agents, or his surveyors, to investigate such details as the buyer desires validated. This vessel is offered subject to prior sale, price change or withdrawal without notice.



605 Exterior Profile Port



605 Exterior Starboard Bow





605 Exterior Overview



605 Exterior Starboard



605 Exterior Motors



605 Exterior Port Folding Balcony





605 Exterior Aft Cockpit



605 Exterior Aft Cockpit



605 Interior Galley



605 Interior Galley





605 Interior Galley



605 Interior Galley



605 Interior Salon



605 Interior Salon





605 Interior Salon TV



605 Interior Salon and Helm





605 Interior Master Forward



605 Interior Master Forward



605 Interior Master Forward



605 Interior Master Forward