



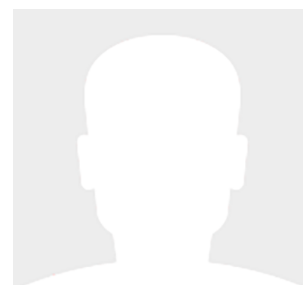
38' (11.58m) 2023 Formula 380 SSC  
Pompano Beach Florida United States



## OVERVIEW

**\$980,000**

Manufacturer:	Formula		
Engines:	2 Mercury	Hull Material:	Fiberglass
Engine Model:	600	Cruise Speed:	
Engine HP:	600	Max Speed:	
Beam:	11' 6"	Cabins/Heads:	1 /
Max Draft:	"	Fuel Type:	Gas/Petrol
Water:	43 G (162.77 L)	Fuel:	300 G (1135.62 L)



Rich Murray    RichM@NauticalYachtGroup.com

1-305-979-9916

## Data Sheet

Category: Bowrider  
Condition: Used  
Model Year: 2023  
Beam: 11'6" (3.51m)  
LOA: 38' (11.58m)  
Cabins: 1  
Sleeps: 4  
Double Berths: 1  
Queen Berths: 1

Fuel Type: Gas/Petrol  
Hull Material: Fiberglass  
Hull Shape: Deep Vee  
Hull Finish: Imron  
Hull Warranty: 5 years  
Air Conditioning: Yes  
Bridge Clearance: 11' 8

SeaKeeper: Yes  
Fuel Tank: 300 gal (1135.62 liters)  
Fresh Water: 43 gal (162.77 liters)  
Holding Tank: 37 gal (140.06 liters)  
Builder: Formula  
HIN/IMO: TNRD2848J223

## Engines/Generators

### Engine 1

Mercury  
600  
Outboard  
600HP  
447.42KW  
Fuel: Gas/Petrol  
Hours: 32  
Hours Date: 01-23-2024  
Year: 2023  
Location: Port

### Engine 2

Mercury  
600  
Outboard  
600HP  
447.42KW  
Fuel: Gas/Petrol  
Hours: 32  
Hours Date: 01-23-2024  
Year: 2023  
Location: Starboard

### Generator 1

Westerbeke  
7.50KW  
Hours: 40

## Summary/Description

Nautical Yacht Group is proud to offer this nearly brand new 380 Super Sport Crossover. Owned by an experienced yachtsman, this 380 has been professionally maintained by our in house management team.

The 380 is a perfect combination of family fun day boat and weekend cruiser. It has everything you need for a great day on the water. The bow area has seating for 6 with tables or converts to a sun lounge in seconds.

The hard top keeps the cockpit covered with cool shade. Even more shade can be provided by the electric aft sun shade that covers the whole aft end of the boat. This makes the aft lounge the best seat in the house.

When it's time to cool off, the expansive swim platform eases you onto your favorite sandbar. Stopping there is made easy by the electric anchor windlass and all chain anchor line.

Below you will find a small galley that's perfect for whipping up a snack. There's also a convertible dinette, double bed, and full head with shower.

And then there's the renown Formula performance.....The 380 is built on the iconic FAS3Tech multi-step hull which delivers great handling and impressive fuel economy. The twin 600's will push the 380 to over 60 mph while still achieving an efficient cruising speed in the mid 40's.

This is the most highly optioned 380 on the market. Original Build sheet is available for serious inquiries.

Notable features include:

### ***Engines and Machinery:***

Twin Mercury v-12 600's with just 30 hours.

Mercury First Mate Marine Safety and Theft Deterrent System

Westerbeke 7.5 Kw Generator with 37 hours.

Reverso Engine Auto Flushing System

SeaKeeper 3 Gyro Stabilizer

Bow Thruster

### ***Navigation and Electronics:***

Twin RAYMARINE AXIOM 16 XL Chartplotters

RAYMARINE HD Radar

RAYMARINE VHF Radio

AIS 650 (Send and Receive)

JL AUDIO M6 Cockpit Speaker Upgrade with Cockpit and Bow Subwoofers

Remote LED Search light

***Air Conditioning:***

18,000 BTU Cockpit A/C

12,000 BTU Cabin A/C

***Cockpit:***

Walk Through Coupe Windshield with Optional Lexan side panels

YETI Cooler

Electric Grill

Stand up Paddle Board Racks

Swim Platform Sport station With drink Holders

Wood Grain Vinyl Flooring on Swim Platform and full Cockpit

- Aged Teak with White Lines

Full Canvas and covers package

Sureshade electric aft shade

Bow shade

Fender Clips

Underwater Lights

Located in Boynton Beach FL. Call to schedule a showing.































































