



Partnership

64' (19.51m) 2007 Ocean Alexander Pilothouse
Palm Beach Shores Florida United States



OVERVIEW

Manufacturer: *Ocean Alexander*
Engines: 2 MTU
Engine Model: Series 60
Engine HP: 825
Beam: 17' 6"
Max Draft: "
Water: 300 G (1135.62 L)

Hull Material: Fiberglass
Cruise Speed: 16 Knots
Max Speed: 20 Knots
Cabins/Heads: 3 / 2
Fuel Type: Diesel
Fuel:

\$1,124,900



Data Sheet

Category: Motor Yachts

Condition: Used

Model Year: 2007

Refit Year: 2022

Beam: 17'6" Min Draft: 4' LOA: 69' 8"
(21.23m)

LOD: 63' 5" Cabins: 3

Sleeps: 6

Heads: 2

Maximum Speed: 20 Knots

Cruise Speed: 16 Knots

Fuel Type: Diesel

Hull Material: Fiberglass

Hull Shape: Semi Vee

Hull Finish: Paint

Air Conditioning: Yes

Displacement: 69300 lbs

Stabilizers: Standard

Stabilizer Brand: Key Power

Bow Thruster: Yes

Stern Thruster: Yes

Fresh Water: 300 gal (1135.62 liters)

Holding Tank: 100 gal (378.54 liters)

Builder: Ocean Alexander

Designer: Ed Monk

HIN/IMO: OAX64117K607

In Stock: Yes

Engines/Generators

Engine 1

MTU

Series 60

Inboard

825HP

615.20KW

Fuel: Diesel

Hours: 3086

Hours Date: 02-08-2024

Year: 2007

Location: Port

Engine 2

MTU

Series 60

Inboard

825HP

615.20KW

Fuel: Diesel

Hours: 3089

Hours Date: 02-08-2024

Year: 2007

Location: Starboard

Generator 1

Onan

21.50KW

Hours: 2118.90

Hours Date: 02/08/2024

Generator 2

Onan

21.50KW

Hours: 2123.20

Hours Date: 02/08/2024

Summary/Description

Motivated seller looking for the next boat. *Over \$500,000 of improvements in the last 24 months *This boat must be seen to be truly appreciated! *2015-2023 gradual refit.

Motivated seller looking for the next boat.

Over \$500,000 of improvements in the last 24 months.

* Easily handled by a cruising couple w/ 3 stations all with hydraulic bow and stern thruster controls. Wide walk arounds make handling lines a breeze.

* Preferred extended bridge deck

* MTU 60 Series 825 hp engines can provide 16 knot cruising speeds and long-range capabilities at 10 knots

* Very comfortable interior w/ large salon, 3 staterooms and 2 heads

* Look at detailed service history for representation of great ownership

* Comprehensive yard cycle at Jarrett Bay Boatworks including painting exterior from the waterline up in 2022

* 12/2023 - yard cycle including 2 coats of bottom paint and prop speed applied to shafts, props, rudders and stern and bow thruster props.

* Whole boat detailed above the waterline 12/2023. All exterior paint and stainless polished and windows treated w/ Rain X.

* 2023 Walker Bay Venture 14 w/ 70 hp Yamaha, Seadek flooring, Fusion stereo and 9" Garmin plotter/sounder

*** 1,000 hr service interval done by Western Branch in 11/2022 at 2875 hrs**

*** Whole boat Spot Zero system installed 1/2023**

*** Generator, house/inverter, stereo and engine batteries all replaced in 2023 w/ AGM batteries**

*** \$100,000 electronics upgrade in 2015 including all navigation equipment and on-board audio/visual equipment**

Vessel Walkthrough

Partnership has been consistently updated by its knowledgeable owner over the course of his ownership. She is the perfect cruising vessel with secure walk-around side decks, 3 stations and hydraulic bow and stern thrusters. A spacious aft deck and the optional extended bridge deck are perfect for entertaining. There is also a custom, extra-large sun pad for the bow area.

Accessing the aft deck can be accomplished easily from the swim platform where there are port and starboard aft doors. There are also port and starboard side boarding doors for ease of entrance if you are docked side to.

One enters the main salon through a stainless steel sliding door or retractable screen. Upon entering, one is greeted by a large open salon with satin teak wood finish. To starboard is a large L-shaped settee with tons of storage. On the port side are two barrel chairs and lots of cabinet space, which includes a wine cooler. Mounted on the forward bulkhead is a 55" Samsung Smart TV. The audio visual system is located inside one of the forward cabinets.

Going forward up three stairs one enters the wheelhouse, dinette and galley area. The dinette is located to port and is raised for better visibility for those seated. The lower helm has all the options that you would normally find in a much larger vessel. The galley is a sea going chef's delight with plenty of storage, granite counter tops and top of the line appliances.

Going downstairs leads to three staterooms. The master stateroom features a walk-around queen berth, on-suite head which includes a spacious shower with built in seating. Exiting the master one will find a full sized washer and dryer located in a cabinet outside the master door. Moving forward on the port side is another guest stateroom with side by side single berths. The VIP stateroom contains a queen size berth with enough room to walk around the bed. Both guest staterooms share the forward head and with separate shower.

Proceeding to the flybridge there are two white Stidd chairs, a large hardtop for shade and once again a full complement

of electronics. Seating is well appointed with a L-shaped settee to starboard with a teak table. There is also a two-person settee to port. For entertaining and relaxing there is a fridge, icemaker, propane grill and wet bar. Aft is the boat deck with a 2023 Walker Bay Venture 14 with a 70 hp Yamaha 4stroke. The tender is launched and retrieved with the help of the 2000 lb. Steelhead hydraulic crane. Partnership has the optional extension for the boat deck. When the dink is in the water custom stainless rails can be installed in flush mount sockets for added security around the opened bridge hatch. Port side of the boat deck is a hatch that opens to the staircase that leads down to the aft deck.

On the aft deck one will find a transom settee and a swiveling table with two teak chairs for al fresco dining or relaxing. There is also a wet bar, refrigerator and ice maker located here as well. Under the table is a hatch that opens to a spacious lazarette. Access to the engine room is through a hatch on the aft deck. The engine room is laid out intelligently with easy to all machinery. The engine room has 6'2" of headroom.

Accommodations

This 64' Ocean Alexander has an incredible accommodation layout which will challenge much larger vessels.

- Satin finish teak paneling & cabinetry
- Cruisair central air conditioner with 5 ECU control panels **(controls/displays replaced with updated models in 2023)**
- Inner spring mattresses for berths in guest and VIP staterooms
- Custom Tempur-Pedic mattress in master **(2023)**
- Flush design doors and drawers with satin finish
- Stainless steel hardware
- Hanging lockers
- Granite in shower floor, shower seat and wall trim
- Double bull-nose granite counter tops and splash board for galley and heads

Salon

The Salon is very spacious with enough room for an L-shaped sofa and (2) barrel chairs.

- 15 bottle Wine cooler w/solid panel door
- Loose end table
- Liquor and glass storage in cabinet
- Custom "Sunburst" removable ceiling panel
- Large sliding table with hi-low post
- Middle Atlantic Media Rack for entertainment system: Marantz home theatre receiver, Samsung DVD player, KVH, Apple TV, Direct HD TV master receiver with whole boat DVR and more **(2015)**
- KVH Satellite Television
- Plenty of storage in forward bulkhead cabinets as well as a 55" Samsung Smart TV mounted to the forward bulkhead
- Central Vacuum system for whole vessel
- 24V LED lights throughout interior **(2015)**
- Port and starboard Cruisair split reverse cycle units **(replaced 2020 and 2021)**

Galley

The galley has more counter and cabinet space than any other yacht in this size range.

- Teak panel and cabinetry
- New Granite countertops
- Storage cabinets and drawers, lazy Susan in the corner
- Franke Double sink with faucet and GE disposal
- Overhead dish locker with access on both sides
- Teak plank flooring with ebony border
- Seagull water purifier
- 24' Gaggenau electric stove and Kenyan cook top
- Amana Easy Reach Refrigerator with drawer freezer & ice-maker
- Overhead Microwave Convection oven
- Miele dishwasher
- Broan trash compactor
- Sea Gull water purifier at sink and feeds (3) ice makers on board

Pilothouse

Operating the vessel from the lower helm is extremely comfortable with good visibility. On the port side is a U-shaped dinette with a chart drawer underneath.

- Pilothouse floor teak plank with ebony
- Sunken and extended dash with navigation and electronics
- Large helm wheel made of wood
- Burl-wood top table
- Windshield defrosters
- Custom powdered coated aluminum electronics panel **(2015)**
- (2) Furuno TZ Touch 2 **(2015)**
- Furuno RD 33 display for redundancy w/ battery backup **(2015)**
- Simrad AP 28 autopilot
- Icom IC M510 VHF **(2024)**
- Icom Command mic controlling bridge Icom VHF **(2024)**
- Ritchie 5" compass
- MTU display for both engines
- MTU engine controls
- Pneumatic water-tight doors to port and starboard side deck
- Stainless Steel post stair to bridge
- Tank tender for fuel and water tanks
- One Stidd helm seat (black)
- Large pullout drawer at end of settee
- Key Power bow and stern thruster controls w/ variable speed
- Chart light beside dash
- Bennett trim tab controls
- Back up engine controls
- Key Power control pad for hydraulic stabilizers
- Video control box for (3) on board cameras
- ACR spotlight control
- Stereo speakers for Direct TV that can be shown on Furuno units **(2015)**
- AIS silent running mode switch **(2015)**
- Remote generator controls
- 12v plug
- Cruisair split reverse cycle unit **(replaced 2019)**

- Custom interior blinds on all windows **(2016)**

Master Stateroom

- Queen size berth with custom Tempur-Pedic mattress **(2023)** with burl-wood headboard, two night stands, two drawers under bed and bureau w/chest of drawers
- Wall mounted Samsung HDTV with dedicated Direct TV receiver **(2015)**
- Private head w/stall shower on port w/pocket door
- (4) Oval port lights
- (2) Cedar-lined, full-height hanging lockers with auto lighting (Starboard has safe)
- Old TV cabinet has been modified with shelves for additional storage since TV is now wall mounted **(2022)**
- Cruisair split reverse cycle air unit **(2015)**

Outside of Master:

- Maytag 2400AWW stacked washer/dryer
- Cabinet for cleaning supplies opposite washer/dryer
- Exhaust fan for releasing heat from dryer compartment

VIP Stateroom

- Queen size berth with innerspring mattress, four drawers under bed and a mirrored headboard
- Dressing Mirror
- Stainless Steel oval port light with privacy screen
- One head with stall shower
- Two reading lights on forward wall
- (2) Cedar-lined hanging lockers with automatic lighting
- (2) port lights
- Large Lewmar hatch w/ sunshade and screen **(replaced 2022)**
- Samsung wall mounted Samsung HDTV with dedicated Direct TV receiver **(2015)**

Midship Stateroom

- Side-by-side twin berths with fabric headboards
- 2 Stainless Steel oval port light with privacy screen
- Cedar-lined hanging locker
- Wall mounted Samsung HDTV with dedicated Direct TV receiver **(2015)**

Heads

- Teak walls & cabinets with granite counter tops
- Granite "Baltic Brown" floor for both heads
- Grohe faucets for sink and shower
- Tecma Silence Plus heads
- Fiberglass seamless stall shower with one piece glass door
- Mirrored door on medicine cabinet
- Mirrored sliding cabinet door under head port light
- Floating mirror-like ceiling in heads with recessed tube lighting
- Keuco bathroom fixtures

Flybridge

- Two adjustable Stidd chairs **(helm chair upgraded to 36" Stidd 2016)**

- Stainless steel destroyer helm wheel
- Icom IC M510 **(2024)**
- ICOM Command mic controlling pilothouse VHF **(2024)**
- Key Power hydraulic stabilizer control pad
- MTU displays for main engines
- (2) Furuno TZT2 displays **(Installed 2015)**
- Simrad AP28 autopilot
- Trim tab controls
- MTU electronic engine controls
- Key Power bow and stern thruster variable speed controls
- Ritchie 5" compass
- Heavy duty Kahlenberg double trumpet air horn **(2022)**
- Wet bar with U-Line beverage fridge w/ ice-maker, Magma stainless steel propane grill & stainless sink
- L-shaped settee with teak top table
- Hard top
- Fusion Apollo WIFI/Bluetooth controlled stereo w/ Sirius XM and Zone control for bow and aft deck **(2019)**
- Stereo speakers at helm for video that can be played through Furuno units **(2015)**
- EPIRB housing w/ hydro release
- Sliding Hatch from pilot house to flybridge
- Hatch for stairway from cockpit to flybridge
- 2000 lb. Steel-head davit - **refit in 2020**
- Custom removable flush mount dinghy/jetski cradle **(2023)**
- (2) VHF antennas mounted on hard top **(replaced in 2015)**
- (2) HD7 domes one for the HD Sat TV the other to hide antennas **(2015)**
- Navigation and running lights **(side and stern lights replaced with LED fixtures in 2022)**

Electrical

- (6) Lifeline AGM 4D batteries for house bank **(replaced in 2023)**
- (4) Lifeline AGM 8D batteries for engines **(replaced in 2023)**
- (2) AGM 4D batteries for generators **(replaced in 2023)**
- 31 series AGM battery dedicated to exterior stereo **(replaced in 2023)**
- Engine battery disconnect switch; Service battery switch. Parallel switches between engine banks and Parallel switch between house bank and starboard engine bank
- ProNautic 24v30amp battery charger for engine batteries
- ProNautic 12v30amp battery charger for generator batteries **(replaced 2015)**
- Pronautic 12v10amp battery charger for stereo battery **(2015)**
- Xantrex 4000W inverter/charger (pure sine wave)
- 2 x Shore power receptacle 50Amp Glendening with cable masters in lazarette
- 50 amp on foredeck
- Twin Charles ISO Boost Transformers w/ updated boost cards
- Twin 21.5 KW Onan generators for redundancy (2115 hrs port and 2122 hrs stbd)
- Phone jacks at Master Stateroom, Salon, VIP and Pilothouse
- Vimar switches and outlets
- AC/DC distribution panel with battery paralleling system with control switches
- Electrical panel with back-lighting
- Polarity reverse indicating light
- TV outlets salon/stateroom; Four TV's (Salon and each Stateroom) each with its own Direct TV DVR Receiver
- Central stereo system has speaker outputs to bridge and aft deck
- HD7 tracking TV dish/receiver for the four TV's giving each dual channel DVR's **(Installed 2015)**

Hull, Superstructure and Deck

- Hand-laid, gel coated fiberglass hull
- Solid fiberglass hull bottom
- Carbon reinforced structural fiberglass
- Swimming ladder
- Spare Propellers
- Teak deck on cockpit and aft deck
- Matterhorn White non-skid fiberglass decks
- Teak cap rail on aft deck finished with varnish and 6 coats of clear coat buffed to a mirror shine **(2023)**
- Port and starboard boarding gates
- Aft engine and bow and stern thruster controls located in starboard aft locker
- L-shaped seating on Flybridge with teak table, sink and refrigerator
- Fiberglass bow pulpit with stainless steel anchor roller
- Chain locker forward peak with 300 ft of 3/8" galvanized anchor chain **(replaced 2022)**
- Pneumatic Port and Starboard water-tight door in pilothouse
- Engine room access: walk-in fiberglass stairs from cockpit locker
- Remote operated lockable cockpit hatch to lazarette

Exterior Hardware & Fittings

- Muir 3500 Hydraulic Windlass
- Stainless 80 lb plow anchor
- Bennett trim tabs
- Sea & Freshwater wash down, forward deck & cockpit
- Key Power hydraulic bow thruster (25HP) and Stern (15HP)
- Key Power Hydraulic Stabilizers w/ 6 sf fins
- Dock-side water TV/phone inlet
- Teak swim platform and steps to aft deck
- Teak aft deck and step treads to bridge and walk arounds **(replaced in 2017)**
- Flybridge table with teak bullnose and nautical star in center
- Swing out teak table on aft deck
- Uline refrigerator w/ ice maker on aft deck **(replaced 2017)**
- Stainless sink on aft deck
- Teak cockpit coaming cap rail
- Heavy-duty corner cleats at both sides of Euro transom
- Built-in Fiberglass bench seat in cockpit
- Removable 2-1/2" rails on swim platform
- Sea Vision 24 volt LED underwater lights (3) **(2015)**

Lazarette

- 240 volt Air Compressor **(replaced 2023)**
- (2) Charles Iso boost 50
- (2) Glendenning cablemaster
- Spare Propellers
- Central Vacuum
- Xantrex 4000 watt inverter/charger
- Swim ladder
- House battery bank **(replaced 2023)**

Control and Navigation

- Three control stations: Flybridge & Pilot House w/engine instrumentation and lighted switches as well as a swing out docking station on aft deck located in starboard locker.
- International navigation lights
- MTU displays
- Heavy duty Kahlenberg double trumpet air horn **(2022)**
- Ritchie 5" compass at both in Flybridge and Pilot house
- **\$100,000 refit on electronics in 2015:** all new audio/visual throughout vessel and all new navigation equipment
- (4) 15" Furuno TZ Touch 2 units **(2015)**
- Furuno Ultra High Definition 4' open array 6 kw radar **(2015)**
- Furuno sounder module **(2015)**
- Furuno weather module w/ Sirius subscription **(2015)**
- Furuno Class B AIS **(2015)**
- Furuno RD33 in Pilot house for redundant nav information w/ battery backup **(2015)**
- Simrad Autopilot controls at both helms
- Icom IC-M604 VHF Radios (2) - one in Pilothouse with Commandmic III remote on Bridge, second on pilothouse with Commandmic III remote on pilothouse

Engine Room and Bilge

- Sea Land holding tank plumbed for overboard & dockside discharge
- Common drainage system for sink, shower, bilge & exterior deck
- Color-coded piping for fuel, water and hydraulic systems
- Five electric bilge pumps
- Lighted bilge w/ AC and DC fixtures
- Tankwatch 4 holding tank gauge
- Deck fills for both fuel tanks on both sides of boat for convenience.
- Stainless steel rail on side of engine
- Y-valve emergency engine driven bilge pump
- Dry bilge area arrangement in center engine room
- Gulf Coast fuel polishing system
- Stainless steel stringer caps for engine bed sand motor mounts
- Sea cocks and raw water strainers on all intakes
- Upgraded sea water intake, manifold and sea water pump for air conditioning system **(2016)**
- (2) Onan 21.5 kw Generators (2080 hrs port and 2081 hrs stbd)
- Detailed stringers in engine room and lazarette
- Fireboy system
- Dual Racor fuel/water separators with "Y" valves for main engines and both generators
- Delta T engine room vent blowers w/ variable speed controls
- Engine isolation switches
- Herone rubber flooring-engine room
- Fresh-water outlet with hose in engine room
- 24V and 110v ceiling lights
- Underwater exhaust system
- Gulf Coast Filters F-1 fuel polisher
- Groco oil changing system for both engines, transmissions and gensets **(refurbished 2017)**
- Twin MTU series 60 engines
- Twin Disc transmissions

- 3" Aqua 22HS shafts
- Hung Shen 33' X 41" 4 bladed props with spares
- Tides dripless rudder post seals **(replaced in 2016)**
- Tides dripless shaft seals w/ 2 spare seals installed on shafts **(2021)**
- Key Power hydraulic system featuring 6 sf stabilizer fins, 25hp bow thruster and 15hp stern thruster
- Aluminum fuel tanks with sight tubes
- Stainless steel water tanks
- Headhunter freshwater system
- Spot Zero ZTCII 2000 whole boat freshwater reverse osmosis system **(2023)**
- Torrid 240 volt 30 gallon water heater **(replaced 2022)**

Recent service highlights

Recent service highlights

2024

- New Icom IC-M510 VHF's on pilot house and bridge helms
- New Icom Command Mics on pilot house and bridge helms
- Pull, clean and test generator heat exchangers and replace coolant 2/2024
- Replace belts on generators 2/2024
- Refurbish davit pump and reservoir 2/2024
- Annual certification of handheld fire extinguishers and engine room fire suppression system. 2/2024
- Annual service on generators 1/2024
- Annual service on transmissions 1/2024

2023

- Whole boat detailed above the waterline 12/2023. All exterior paint and stainless polished and windows treated w/ Rain X.
- Painted bottom w/ 2 coats Seahawk Cukote, all zincs replaced and Prop Speed applied to shafts, props, rudders and bow and stern thruster props 12/2023
- Trim tab cylinders replaced 12/2023
- All air conditioning sea water lines from intake seacock to discharge cleaned with Barnacle Buster 12/2023
- Strip, varnish and clear coat cap rail on aft deck
- Replace (6) 4D house batteries, (4) 8D engine batteries, (2) 4D generator batteries and dedicated stereo battery with AGM batteries
- Update USA East Coast and Bahamas Furuno charts on plotters
- Repair DeAngelo exhaust risers under warranty
- Replace Air Seps w/ new style serviceable units
- Purchase 2023 Walker Bay Venture 14 w/ 70hp Yamaha
- Sand and 2 part clean all teak decks
- Install whole boat Spot Zero ZTCII 2000 system
- Custom, universal flush mount dinghy cradle on bridge by YRM
- Aftercoolers serviced 10/2023
- Selected engine coolant and oil hoses replaced 10/2023
- Annual engine service on mains 10/2023
- Main engine oil pan gaskets replaced 10/2023

2022

- 1,000 hr service on mains by Western Branch 11/2022
- Annual service on mains, generators and transmissions 11/2022
- Replaced sea water pumps on both generators
- Changed coolant on mains
- Replaced fuel pump on port generator
- Replace 300' 3/8" galvanized anchor chain
- Replace air horn trumpet w/ 2 horn trumpet
- Replace hot water heater
- Remove all ports, build up mounting surface so they lay flat on mounting surface and rebed
- Replace foredeck hatch
- Replace selected sections of teak veneer in cabins
- Replace section of dryer vent hose
- Replace inspection ports on exterior of vessel
- Replace all exterior courtesy lights
- Replace side and stern navigation lights w/ surface mount LED fixtures
- Prep, roll and tip all exterior compartments
- Prep and paint exterior of vessel from the waterline up with Alexseal products (Cloud White and Matterhorn white on the non-skid)
- Fabricate and install shelves inside TV cabinet in Master
- Replace exterior sink faucets
- Replace windshield tint

2021

- Port salon AC air handler and compressor replaced
- Forward AC air handler and compressor replaced
- MTU aftercoolers replaced
- Service Keypower stabilizers
- New seals for Tides shaft seals w/ 2 spares added on shafts
- Balance props

2020

- Complete refurb on Steelhead davit
- Starboard AC air handler and compressor replaced
- Install (2) cell antennas on mast
- Replace exhaust risers

2019

- Pilothouse AC air handler and compressor replaced

2018

- Upgrade bridge stereo to Fusion Apollo unit
- Install (2) Yagi cell antennas on mast

2017

- Replace teak decking on aft deck
- Fabricate and install teak treads on steps to bridge and walk arounds
- Replace (2) U-Line beverage fridges w/ ice makers

2016

- Replace Tide Seals assemblies for rudder posts
- Service seals on steering cylinder, flush and change fluid in steering system.
- Replace all (4) cutlass bearings
- Laser alignment of engine mounts
- Send props, shafts and couplers to prop shop
- Purchase and install 36" Stidd chair at bridge helm
- Upgrade sea water supply to air conditioning system w/ 1-1/2" thru hull, larger sea water pump and new supply manifold.
- Replace sea water pump on port engine
- Replace Icom M604 VHF on bridge
- Refinish table tops on bridge and aft deck
- Replace windshield wiper motors, wiper arms and wiper blades
- Paint engine room bilges

2015

- Replace master air conditioning air handler and compressor
- Replace (2) engine room Garmin cameras
- Install Tracvision HD7 HDTV dome and equipment
- Install second Tracvision dome to house misc antenna
- Upgrade audio visual including new Marantz 7.1 home theatre receiver, Samsung Blue Ray DVD player w/ 4K upscaling, Apple TV and X Box
- Fusion UD750 stereo on bridge w/ 3 zones (bridge, aft deck and bow) and output to stereo in salon
- Fusion wired remote on aft deck
- All new amplifiers, speakers and subwoofers on the exterior
- Dedicated battery and battery charger for stereo
- (4) 15" Furuno TZ Touch 2 multi-function displays
- Furuno RD-33 standalone GPS/depth instrument in pilothouse wired through a battery backup
- Furuno Ultra High Definition 6kw open array radar
- Furuno FA-50 Class B AIS w/ silent running mode
- Sirius satellite weather module
- Furuno sounder module
- Replace TV's in master, port guest, VIP and salon with Samsung HD flat screens
- Direct TV HD package with whole boat DVR
- Replace VHF antennas.
- Replace generator battery charger
- Service MTU heat exchangers and replace gaskets upon reassembly
- Flush engine sea water side

Disclaimer

The company offers the details of this vessel in good faith but cannot guarantee or warrant the accuracy of this information nor warrant the condition of the vessel. A buyer should instruct his agents, or his surveyors, to investigate



such details as the buyer desires validated. This vessel is offered subject to prior sale, price change or withdrawal without notice. Seller's personal items do not convey. A detailed may be provided by request



Salon



Aft deck



Bridge



Salon



Pilothouse helm



Pilothouse helm



Galley/Pilothouse



Galley/Pilothouse



Galley dinette



Pilothouse



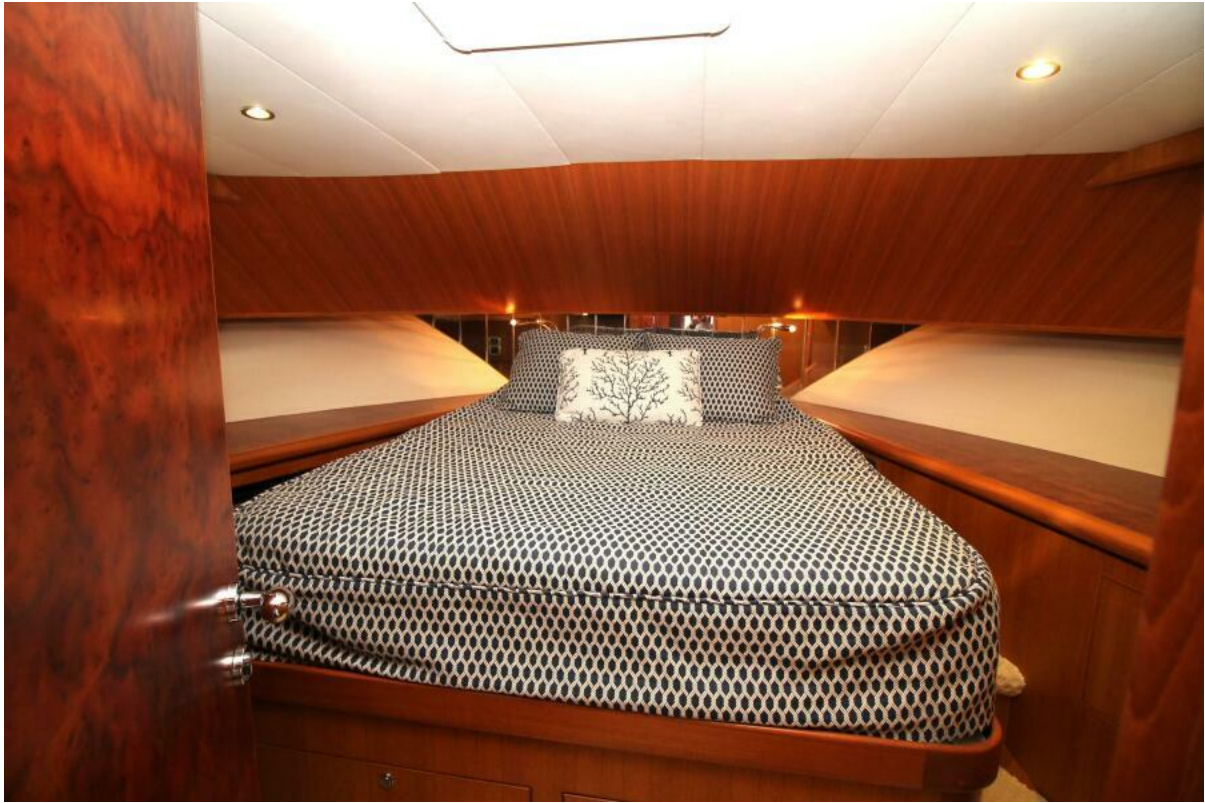
Master



Master



Master head



VIP



VIP



Guest stateroom



Guest head



Bridge helm



Bridge settee



Bridge grill/sink



2023 Walker Bay 14



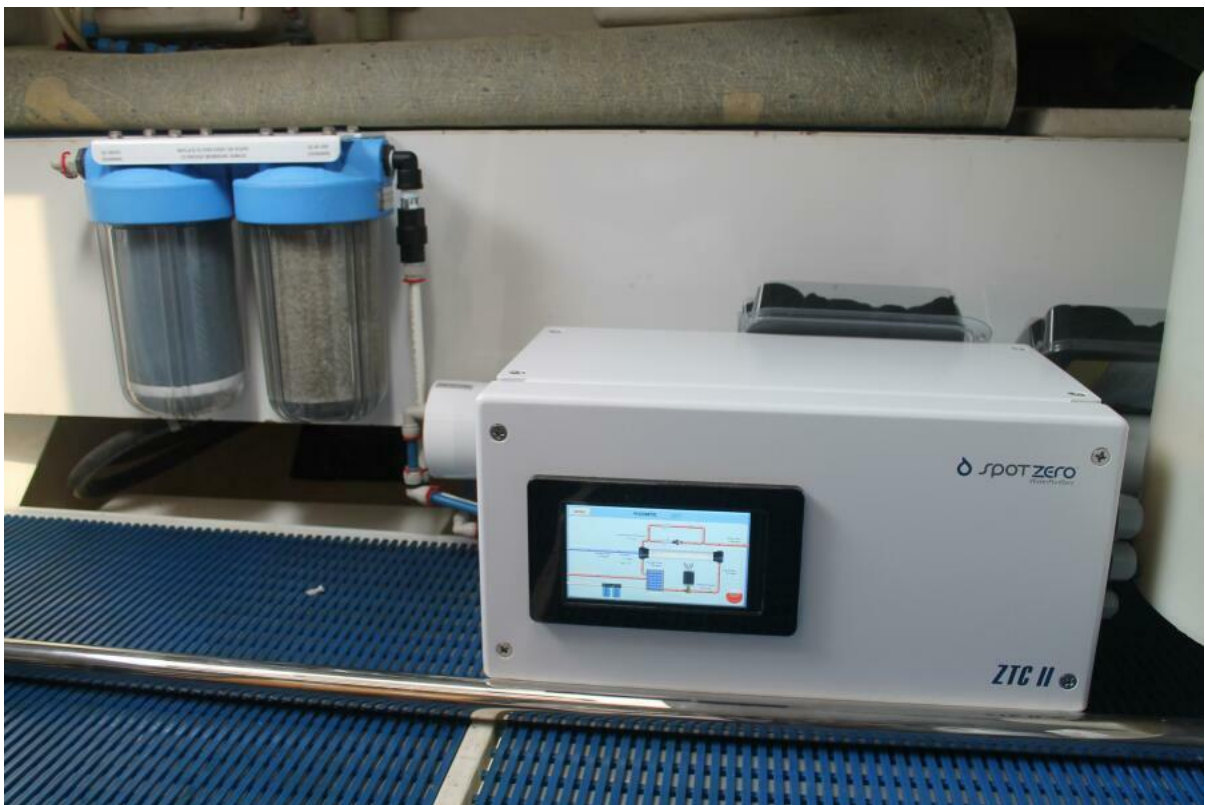
2023 Walker Bay helm



2023 Walker Bay cover



Hardtop



Spot Zero



Inverter



Port laz



Stbd laz



Engine room



Aft deck station



Fresh paint 2022



Fresh paint 2022



Pulpit



Bow pad



Profile



Profile 2



Profile 3



Profile 4



Aft deck cap rail