



# Kando 110

110' (33.53m) 2024 AvA Yachts 110 Kando Explorer Superyacht  
Antalya Turkey



## OVERVIEW

Manufacturer: AvA Yachts

Engines: 2 Volvo Penta

Engine Model: D16MH

Engine HP: 650

Beam: 25' 7"

Max Draft: 8' 2"

Water:

Hull Material: Steel

Cruise Speed: 10 Knots

Max Speed: 14 Knots

Cabins/Heads: 6 / 8

Fuel Type: Diesel

Fuel: 12944.44 G (49000 L)

€12,950,000



## Data Sheet

Category: Motor Yachts  
Condition: New  
Model Year: 2024  
Beam: 25'7" (7.80m)  
Max Draft: 8' 2" (2.50m)  
(0.00m)  
LOA: 115' 2" (35.10m)  
Cabins: 6  
Sleeps: 12  
Full Beam Master: Yes  
Heads: 8

Crew Cabins: 1  
Maximum Speed: 14 Knots  
Cruise Speed: 10 Knots  
Range NM: 6500  
Fuel Type: Diesel  
Super Structure Material: Aluminum  
Hull Material: Steel  
Hull Shape: Displacement  
Air Conditioning: Yes

Gross Tonnage: 320  
Stabilizers: Standard and Zero Speed  
Bow Thruster: Yes  
Fuel Tank: 12944.44 gal (49000 liters)  
Fresh Water: 1743.54 gal (6600 liters)  
Holding Tank: 924.6 gal (3500 liters)  
Classification: B.V. Commercial Yacht  
Builder: Ava Yachts  
Designer: AvA Yachts  
Interior Designer: AvA Yachts

## Engines/Generators

### Engine 1

Volvo Penta  
D16MH  
Inboard  
650HP  
484.71KW  
Fuel: Diesel  
Location: Port

### Engine 2

Volvo Penta  
D16MH  
Inboard  
650HP  
484.71KW  
Fuel: Diesel  
Location: Starboard

### Generator 1

KOHLER or equivalent  
60KW

### Generator 2

KOHLER or equivalent  
60KW

## Summary/Description

Gilman Yachts is the AvA appointed dealer for AvA Shipyard of Antalya, Turkey for North and South America and the outlying islands.

Gilman Yachts is the AvA appointed dealer for AvA Shipyard of Antalya, Turkey for North and South America and the outlying islands.

Having finished a 110' Kando series at the shipyard, we offer experience with the brand, the shipyard and the ownership of the yard.

Projects are delivered at very favorable price FOB Antalya and built to suit the electrical requirements of the buyer.

Completion time on the Kando 110 is 18-20 months from contract signing.

## Boat's Characteristics

- Displacement Hull Form
- Unsinkable Hull on Flooding Water in any Compartment
- Minimum 2.10 m Free Height in Cabins
- 4 Control Stations & 2 Helm Bridges with Emergency Stop Buttons

## Structural Materials

- Hull: High Tensile Marine Steel AH36
- Superstructure: Aluminum Alloy Almg 5083 H321
- Hardtop: Sandwich System Epoxy Composite
- Fresh Water System: Polypropylene Pipes
- Sanitary System : PVC Pipes
- Fuel System: Mapress System or equivalent
- Sea Water Cooling System: Mapress System or equivalent
- Fire Extinguishing System: Mapress System or equivalent
- Bilge Suction System: Mapress System or equivalent
- Tank Air Vent System: Mapress System or equivalent
- Hydraulic System: Seamless Steel Pipes
- Stainless Steel Equipment: AISI316L unless otherwise specified

## Engines, Propulsion System, Speed & Range

Main Engines: VOLVO-PENTA D16MH:

- 2x 650 HP @1800RPM Heavy Duty Marine Engines
- 2x Gearbox TWINDISK or ZF

Propulsion System : Long Shaft & Fixed Blade Propellers:

- AISI316L Stainless Steel Propeller Shafts

Max Speed: 13-14 Knots (95% Engine Load)

Cruise Speed: 8-10 Knots (60% Engine Load)

Cruise Range: 6,500+ Nautical Miles at Cruise Speed

## Maneuvering & Steering & Mooring

4x Control Stations:

- 1x Wheelhouse, 1x Flybridge, 2x at Wings

4x Dual Electronic Main Engine Throttles : VOLVO-PENTA

1x Steering Gear: HIDROMARIN:

- Electro-Hydraulic Steering Gear Pump Actuated Cylinders
- Manual Operation Ability on Emergency
- Incorporated with rudder angle indicator and auto pilot system

2x Rudder Blades:

- 2x Steel Constructed, Foil Shaped Rudder Blades
- 316L S.S. Rudder Shaft

1x Bow Thruster : SIDE POWER SH1000:

- 740 kg-f, Hydraulic operated a bow thruster actuated by central hydraulic power unit

2x Anchor Winch: DATA:

- Hydraulic Operated and made of Stainless Steel AISI316L Anchor Winch connected to the central hydraulic power unit in the Engine Room. Joystick on Control Stations
- Two, polished stainless steel AISI316L chain locks

2x Mooring Capstans: DATA:

- Hydraulic Operated through Central Power Unit
- Polished Stainless Steel AISI316L & Raised Position with foot buttons

2x Anchors: INHOUSE:

- Galvanized Steel, Danforth Type, 1x 300 Kg, 1x 200 Kg, Seated at Port and Starboard Side

Chain:

- 19mm, Grade II, total 260m galvanized steel chain for each anchor incorporated with a digital chain meter goes through 2x S.S. AISI304 hawse pipes
- Composite covered chain locker with sea water flush system, drains overboard

10x Bollards: INHOUSE:

- Highest Quality Polished Stainless Steel AISI316L, welded to the raised deck position
- 4x Large Size at the Fore Deck, 2x Large Size at the aft Main Deck, 2x Small Size at the Middle Main Deck, 2x Small Size at the Swimming Platform

## Equipment & Outfitting

Fin Stabilizing System : SLEIPNER:

- Hydraulic Operated, Zero Speed Functionality

Air Conditioning System : WEBASTO:

- 250.000 BTU Chilled Water Compressor Unit, 380V AC, Heat & Cool Fan Coils in each guest cabins, salon and crew quarters
- Fresh Air Make-up Unit
- Volumes to be Air Conditioned; Main Deck Salon, Upper Deck Salon, All Guest & Crew Cabins, Wheelhouse, Galley, Crew Mess, Lazarette
- Air-Conditioned Spaces are Mechanically Ventilated

Waste Water Treatment System HAMANN:

- Capacity 2 cbm / day

Water Maker : SEA RECOVERY:

- 1800-2 GPD Aqua- Whisper DX 75 284 lt/h Capacity, Self-Flushing

Deck Tender Crane: OPACMARE or BESENZONI:

- Hydraulic Operated, 1200Kg Capacity, With it's self Hydraulic Power Unit

Vacuum Toilet System: JETS

Central Entertainment System & Media Server: SONOS & CRESTRON

Window Wipers in Wheelhouse: SPEICH

Passarella Gangway: INHOUSE:

- Hydraulic, Remote Controlled, Adequate Length, Solid & Portable Hand Rails
- Fuel Separator: ALFA LAVAL:MIB303

Flexible Propulsion Shaft Coupling: CENTA

Engine Room Ventilation Fans:

- Electric Driven & Centrifugal:

Automatic Sliding, Salon Aft Doors:

- Highest Quality Polished Stainless Steel Framed Glass, Curved Shape
- Main Deck Salon & Upper Deck Salon

Satellite TV Antenna : INTELLIAN or KVH:

- 1x 90cm Bowl, 1x 90cm Empty Dome

Inter Communication Phone System: PANASONIC:

- All Cabins, Main Deck Salon, Upper Deck Salon, Wheelhouse, Galley, Crew Mess, Flybridge, Lazarette

Electricity Controlled Venetian Window Blinds:

- Master Cabin, Main Deck Salon, Upper Deck Salon

2x LED Search Lights:

- Electric Remote Control

8x LED Underwater Lights:

- 4x at the transom, 4x at the sides at the aft side

Teak Deck Covering on Weather Exposed Decks:

- First Class Teak Wood, 12mm Thickness

Tempered Deck House Window Glasses

Weather Exposed Deck Furniture & Cushions:

- Seating Groups on Flybridge, Seating Groups on Aft Pool

Hard Top & Radar Mast:

- Molded GRP, Sandwich System

Various Bulwark & Handrails:

- Highest Quality Polished Stainless Steel, AISI316L & Carbon Fiber

Guard Rails on Aft Swimming Platform:

- Highest Quality Polished Stainless Steel, AISI316L, Portable

Air Horn

Navigation Lights:

- LED Lights, According to COLREG

Engine Room Heat & Fire Insulation: ROCKWOOL

Accommodation Spaces Heat Insulation: GLASSWOOL

## Navigation Electronics

NavCom Electronic Systems: FURUNO or SIMRAD:

- 4x Hatteland, 24" Color Display
- 12kW X-Band Radar, 6kW Open Array Radar

GMDSS VHF , Inmarsat-C Ship Earth Station Terminal for GMDSS:

- FA-170 AIS & GPS Class-A Module

- AutoPilot Module
- Navtex Receiver
- Weather Station
- BNWAS
- FI-70 Multi-Purpose Displays

## Monitoring & Alarm Instruments

Central Monitoring & Alarm System (AMS): BÖNING or PRAXIS:

- Touch Screen Display in Wheelhouse and Crew Quarter
- Monitoring of Tank Levels, Bilge Levels, Diesel Generators, Propulsion Engines, Main Switchboard Voltage (220VAC + 380VAC), Shore Power Voltage, Battery Levels, Navigation Lights

Camera Monitoring System: HAIKON:

- 5x 1080p IR, IP Cameras
- 8 Channel HD Camera Recorder
- 15" Led Display in Main Helm Bridge

Magnetic Compass, Barometer, Hydrometer kit

Engines & Generators Digital Monitoring Indicators:

- Shall also be Monitored in AMS

Tank Level Monitoring Indicators:

- Digital Indicators on Wheel Console
- Shall also be Monitored in AMS

Bilge Level Alarms:

- Visible & Audible Alarms
- Shall also be Monitored in AMS

## Accommodation Equipment

Home Appliances For Galley: SIEMENS:

- 1x Cooking Owen, 1x Microwave Oven, 1x Induction Electric Cooking Range, 1x Dishwasher, 1x Inox Refrigerator

Home Appliances for Crew Mess: SIEMENS:

1. 1x Cooking Owen, 1x Microwave Oven, 1x Induction Electric Cooking Range, 1x Dishwasher, 1x Inox Refrigerator

1x Washing Machine, 1x Dryer, 1x Ironing Mangle in Laundry: SIEMENS:

1x Small Size Refrigerator in Flybridge Bar

4x Wine Coolers

1x Main Deck Bar, 1x Upper Deck Bar, 1x Galley, 1x Flybridge Bar

4x Ice Cube Makers

1x Main Deck Bar, 1x Upper Deck Bar, 1x Galley, 1x Flybridge Bar

LED TV's: SAMSUNG:

- 65" Smart Flat UHD 4K in Main Deck Salon - Retractable
- 65" Smart Flat UHD 4K in Upper Deck Salon - Fixed on the Wall
- 55" Smart Flat UHD 4K in Owner's Suite - Fixed on the Wall
- 40" Smart Flat UHD 4K in each cabin - Fixed on the Wall
- 40" Smart Flat UHD 4K in Crew Quarter - fixed on the wall

Central Vacuum Cleaner System

Home Theatre Sound System in Main Deck Salon

Stereo System on Pool Deck & Flybridge

## Interior Furnishing

Cabins, Salon, Furniture & Decoration:

- Plywood Furniture
- Owner's Choice Veneer, Satin Varnish Finishing
- Artificial Ladder or Textile Upholstery
- Wooden/Carpet Floor in Cabins, Wooden/Carpet Floor in Salon
- Custom Size Spring Beds
- Manual Control Venetian Blinds

Toilets / Bathrooms:

- Artificial Granite Bench Tops
- Polycarbonate Shower Cabins
- Ceramic & Mosaic Tile Decoration
- Towel Dryers Heaters

## Exterior Furnishing

Aft Pool Seating Area:

- Watertight Upholstery with Sponge
- Fixed Wooden (Iroko) Table with Stainless Steel Leg
- Deck Bar with Cool Box

Fore Seating Area (if preferred by the Owner):

- Watertight Upholstery with Sponge

Flybridge:

- Control Station with Engines Throttle & Wheel
- Various Seating Groups & Watertight Upholstery with Sponge
- Grill & Bar House with Cool Box
- Sunbathing Area



## Safety & Security Equipment

- NOVEC Fixed Fire Extinguishing System in Engine Room
- EPIRB + SART Emergency Beacons
- 2x Viking Life rafts on The Flybridge Deck
- Smoke Detection & Fire Alarm System in Engine Room
- Portable Fire Extinguishers in All Cabins
- Fire Blankets in Galley, Crew Lounge, Engine Room

## Piping System & Pumps

### Fresh Water System:

- Filling, supplying cold water and circulating hot water connected to the freshwater storage tank, water maker and water heater, equipped with LIVERANI or equivalent electric driven, freshwater pressure pumps and hot water circulation pumps, SS or Bronze ball valves. Hot water circulation pipelines are to be heat insulated. Capacity of the pumps as per calculations.

### Sanitary Drain & Discharge System:

- Drainage of wastewater to the storage tanks and discharge the wastewater tank to shore connection on the aft deck and wastewater treatment unit, equipped with electric driven, macerator pumps, SS or Bronze ball valves

### Bilge Suction & Discharge System:

- Suction and discharge of bilge water from each of watertight compartment separately equipped with two electric driven self-priming, centrifugal, bronze pumps, SS or Bronze ball valves
- 5x local bilge pumps are to be equipped with separate discharge pipelines together with high level alarms
- Water level gauges are to be provided with audible and visible alarm on main helm bridge

### Water Fire Extinguishing System & Nozzles;

- Supplying sea water from sea chests to deck fire nozzles to the fire chests equipped with electric driven, centrifugal, Bronze, emergency pump, SS or Bronze ball valves

### Fuel Filling & Supply & Transfer System:

- Filling fuel tanks and supplying fuel to the consumers and return lines to the tanks, transferring the fuel between storage tanks or outside shore connection by means of electricity driven fuel transfer pump and air ventilation of the fuel storage tanks
- Double Racor or equivalent filters for each fuel consumer on fuel supply lines

### Sea Water Cooling System:

- A Central CuNiFe pipe system connected to two bottom sea chests in engine room with SS or Bronze butterfly valves and sea water strainers
- Engines, Generators and other consumers are to be cooled with sea water supply via branch lines connected to central sea water cooling pipe. Consumer's connection are to be made with Neoprene flexible hoses.

### Hydraulic System:

- Central hydraulic system is to consist of center power unit with electricity driven pump and PTO pumps on the main propulsion engines, seamless steel pipelines to operate bow thruster, anchor winches, capstans. Equipment

is to be connected to the system with high pressure flexible hoses.

#### Main Engines & Generators Exhaust System:

- Water cooled, Heat Insulated Main Engines exhaust pipes made of mild steel muffler exhaust system for Gensets

#### Air Conditioning System:

- Chilled water circulation to fan coils and water drain from fan coils to the tanks with polypropylene pipe lines. Chilled water circulation pipelines are to be heat insulated.

## Electricity

#### Electricity Power Supply:

- 24V DC loads to be supplied via dedicated battery banks and with own battery charger/supply units
- 230V 1-phase & 400V 3-phases 50Hz AC Power Generation from Generators
- 400V 3-phases AC Power Supply Shore Connection

#### Battery Groups: VICTRON or MASTERVOLT or Equivalent:

- Marine Gel Service Batteries
- AGM Deep Cycle Engine Start Batteries
- AGM Deep Cycle Generator Start Batteries
- Marine Gel Emergency Batteries

#### Power Generator Plants:

- 2x 60 Kw, 400V AC 50Hz Marine Diesel Generator: KOHLER or equivalent
- Power Management System for all 2 generators to operate automatically
- Sound shields will be provided
- Note For Generator Capacities: Generator Capacities may be increased as per Owner's requirements and is subject to price increase

#### Inverters & Battery Chargers: VICTRON or MASTERVOLT or Equivalent:

- Adequate Capacity Battery Charger Groups

#### 24V DC / 230V AC / 400V AC Switchboards, Distribution Boxes & Fuses

#### Accommodation Lighting, Interior & Exterior:

- LED spotlights
- LED spot, emergency lights

## Painting & Corrosion Protection

#### Exterior Putty & Paint System: AWLGRIP:

- Epoxy based putty on exterior surfaces above waterline with its epoxy-based primer
- Acrylic based final layer paint (colors owner choice)

#### Interior Paint System: TEKNOMARIN:

- Epoxy based primer paint on bilge and inside of the tanks. White color paint on bilge

Antifouling Paint Under Water: AKZO-NOBEL:

- 1 Layers

Zinc Anodes:

- 1 Year Protection

## Delivery

Delivery Time:

- Boat Shall be Delivered as Seaworthy Condition at the Free Zone's Quay in Antalya

## Other Expenses at Owner's Account

Non-fixed, loose interior decoration components:

- Chairs, dishes, fork, knife, linens etc.

Flag registration expenses & taxes

Tender boat

## Warranty Terms & Conditions

The BUILDER, for a period of 12 months following acceptance of the YACHT by the BUYER, undertakes to repair and rectify at its own cost and expense and free of charge to the BUYER, any defects - including latent defects or deficiencies - concerning the YACHT or parts thereof, which are caused by defective material and/or poor workmanship on the part of the BUILDER, its servants, employees or Subcontractors, but excluding defects arising after delivery due to normal wear and tear or improper handling of the YACHT or caused or aggravated by omission or improper use or maintenance of the YACHT on the part of the BUYER, its servants or agents and excluding BUYER's Supplies.

The repairs, replacements and/or rectifications shall be made at the BUILDER's yard. However, the BUYER may, after having notified the BUILDER in writing, cause the necessary repairs, replacements and/or rectifications to be carried out elsewhere provided that the BUILDER declares its consent to do so. In such case, the BUILDER shall, at its own cost, be entitled to forward necessary replacement parts or materials and a team to rectify the defects. The BUILDER's liability shall in such case be limited to pay the cost of repairs, including travelling, and forwarding expenses, to the price of the work which the BUILDER would normally charge at its yard. In any case, the BUILDER shall co-operate with the BUYER to find proper solutions to rectify the deficiency.

## Disclaimer

The company offers the details of this vessel in good faith but cannot guarantee or warrant the accuracy of this information nor warrant the condition of the vessel. A buyer should instruct his agents, or his surveyors, to investigate such details as the buyer desires validated. This vessel is offered subject to prior sale, price change or withdrawal without notice.



Kando 110





61\_o



62\_o





238







Guest



Master Cabin





Master Cabin



Master Cabin



TP Upper Deck Master Cabin 02



TP Upper Deck Master Cabin 07



TP Upper Deck Master Cabin 14



TP Upper Deck Master Cabin 17





TP Upper Deck Master Cabin 25



TP Upper Deck Master Cabin 28



TP Upper Deck Master Cabin 29



TP Upper Deck Master Cabin 30





TP Upper Deck Master Cabin 31



TP Upper Deck Master Cabin 32



TP Upper Deck Master Cabin 37



TP Upper Deck Master Cabin 39





TP Upper Deck Master Cabin 41



TP Upper Deck Master Cabin 54





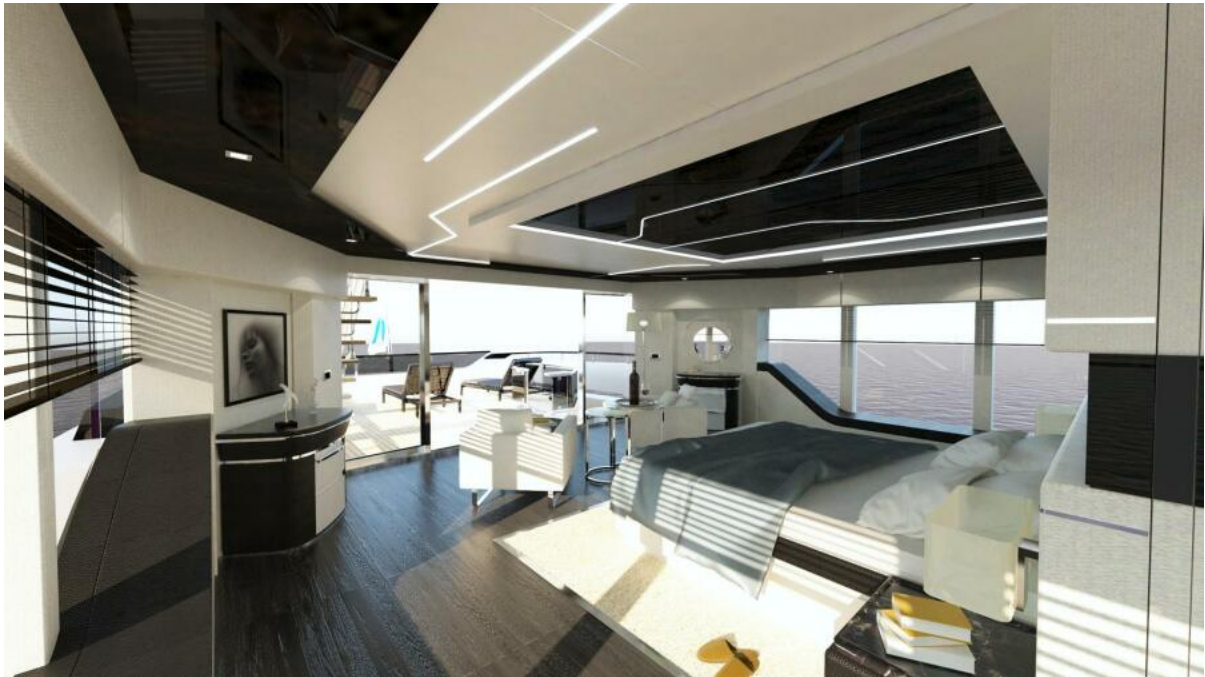
TP Upper Deck Master Cabin 56\_1



TP Upper Deck Master Cabin 57



TP Upper Deck Master Cabin 58



TP Upper Deck Master Cabin 61





TP Upper Deck Master Cabin 62



TP Upper Deck Master Cabin 63



TP Upper Deck Master Cabin 64\_1











Kando 110 GA