



# SKYE

80' (24.38m) 2023 Mystique Yachts Silhouette 800  
Fort Lauderdale Florida United States



## OVERVIEW

Manufacturer:	<i>Mystique Yachts</i>		
Engines:	2 Volvo	Hull Material:	Fiberglass
Engine Model:	D3-2001	Cruise Speed:	
Engine HP:	200	Max Speed:	
Beam:	36' 0"	Cabins/Heads:	5 / 5
Max Draft:	5' 7"	Fuel Type:	Diesel
Water:	925 G (3501.5 L)	Fuel:	554 G (2097.12 L)

**\$4,740,000**



## Data Sheet

Category: Catamaran  
Subcategory: Multi-Hulls  
Condition: Used  
Model Year: 2023  
Documented Year: 2023  
Beam: 36' (10.97m)  
Max Draft: 5' 7" (1.70m)  
LOA: 78' (23.77m)  
Cabins: 5  
Heads: 5

Crew Cabins: 2  
Captain's Quarters: Yes  
Fuel Type: Diesel  
Hull Material: Fiberglass  
Hull Shape: Catamaran  
Air Conditioning: Yes

Bow Thruster: Yes  
Fuel Tank: 554 gal (2097.12 liters)  
Fresh Water: 925 gal (3501.5 liters)  
Holding Tank: 1004 gal (3800.55 liters)  
Imported: Yes  
Builder: Mystique Yachts  
Designer: Peter Wehrley  
Exterior Color: White  
HIN/IMO: MYSSIL01A023  
Stock #: B91360

## Engines/Generators

### Engine 1

Volvo  
D3-2001  
Inboard  
200HP  
149.14KW  
Fuel: Diesel  
Hours: 550  
Year: 2022  
Location: Starboard

### Engine 2

Volvo  
D3-2001  
Inboard  
200HP  
149.14KW  
Fuel: Diesel  
Hours: 550  
Year: 2022  
Location: Port

## Summary/Description

Discover the 2023 Mystique Yachts Silhouette 800 Sail Catamaran, "Skye"- a new pinnacle in long-range cruising and charter excellence.

Discover the **2023 Mystique Yachts Silhouette 800 Sail Catamaran, "Skye"**- a new pinnacle in long-range cruising and charter excellence.

Crafted by a seasoned builder with a legacy of 76ft catamarans that have won numerous prestigious awards, including the **South African Boating Award for best sailing craft over 10 meters**, the Queen of the Miami Boat Show, and Best Charter Boat of the Year on multiple occasions.

### Skye's Highlights:

- Twin 2022 Volvo D-3 Diesel - 200 Hp / Hours: 550
- Carbon fiber mast and boom
- Aramid (Carbon) side stays
- Powered self-tailing winches
- Accommodate 10 Guests and up to 6 Crew
- (2) Onan Generators / 19kW / Hours: 368 / 762
- Raymarine Axiom with Pro16 RVX MFD and an Axiom 16XL MFD Multifunction Display
- Jefa Autopilot
- Raymarine Smart Transducer
- 1800 Gallon p/day Watermaker
- 925 Food Grade Epoxy Water Tanks
- 

This cutting-edge vessel features 7 spacious cabins, including a lavish bridge-deck owner's suite, all with on-suite heads and showers.

Designed for versatility, "**Skye**" offers a unique blend of comfort and performance. This sail catamaran, available for immediate ownership, presents an enticing opportunity for both private use and charter business endeavors.

With its modern amenities and thoughtful layout, this Mystique Yachts creation is primed for unforgettable charter experiences. Seize the chance to navigate the seas with the 2023 Mystique Yachts 80 Sail Catamaran - where luxury and charter potential converge, setting a new standard in sail catamarans.

## Walkthrough

Upon boarding the Silhouette the innovative use of space will become immediately evident. Its unrivaled master cabin has earned its designers the distinction of being builders of some of the most desirable mega yachts in their category. The Silhouette 760 has won the South African Boating award for the best sailing craft over 10 meters. The yachts are well known in the charter market and have been extremely successful and have won numerous prestigious charter awards annually. Wherever the Silhouette goes it turns heads and is showered with accolades.

As a policy, the manufacturer only supplies vessels that are very comprehensively equipped with the latest and best equipment. This maintains the good name of the Silhouette design and protects the owner's investment. Most of our

competitors charge extra for much of what we supply as standard. Options such as a carbon fiber mast and boom, Aramid (Carbon) side stays, powered self-tailing winches, quality grade sails, motorized blinds, frameless glass shower cubicles, laminated glass window panes, a large LED TV in the saloon, lightweight carbon fiber gang planks, etc. are standard on the Silhouette. The Silhouette 800 offers the best value no matter how measured; be it in price, performance, space, ease of sail handling, useful deck area, headroom, and other features such as separate laundry, workshop, machine rooms, crew quarters, and aesthetics, etc. Nevertheless to give our customers maximum flexibility we invite their input.

Much attention has been given to minimizing the weight of the vessel. Many of the walls have synthetic finishes rather than the traditional veneer-cladded walls. This reduction in weight significantly contributes to the already spectacular performance of the vessel.

The intelligent use of space has enabled the yacht to accommodate 10 guests and 6 crew in generous on-suite cabins where the luxury of space will be felt.

With the large number of guests that are able to be accommodated on the vessel and with the level of service expected on a yacht of this size and stature, the design boasts a large well-equipped galley on bridge deck level. The galley is complimented with ample refrigeration, plenty of work space, large storage cupboards, and allowing for the crew to cater to the guest's every need.

The yacht has also been laid out with the crew requirements in mind. It has been provided with generously appointed crew quarters located in the starboard forward section of the hulls with an on-suite bathroom and ample storage. The Captain and partner have a private cabin immediately forward of the galley.

The laundry and workshop are accessed through the Captain's cabin. The laundry is fitted with genuine commercial-grade laundry equipment. This reduces the dependency of the yacht on shoreside laundry facilities and increases the level of service available to the guests onboard.

In keeping with the designer's minimalistic and simplicity in design, a large open flybridge has been incorporated into the design where all sailing operations are performed from a central point. This allows for a reduction in the crew needed to sail the yacht and increases the safety of both the crew and guests onboard. A large electronically operated dive platform has been added off the aft dive deck to the yacht which is able to be used for lifting the tender, lounging on a deck chair with your feet in the water, or as a swimming platform. The lifting platform is raised and lowered by a simple push button switch.

## Construction

The primary structure of the yacht is **Epoxy GRP sandwich** construction throughout, the core of which is a high-density closed cell PVC foam that has been thermo-formed to shape to reduce weight and to eliminate square cut edges for the prevention of moisture migration. All composite laminates use Epoxy resin, are vacuum-consolidated, and post-cured for extra strength.

### Features:

- The fiberglass reinforcing and epoxy resin used in the construction of the vessel conforms to ISO 9002 or better quality control procedures Epoxy resin is used in all structural members and polyester resin in the non-structural areas
- Stitched E-glass engineered fabrics is used throughout with Carbon reinforcing in places
- Core material: Thermo formed rigid closed cell PVC foam is to be used in the hull, decks, floors and bulkheads and Polyethylene honeycomb in the bridge deck and fly bridge floor, and marine plywood in high stress areas

- Bulkheads are resin infused for planeness and strength
- Laminates are vacuum consolidated
- All core materials to cured laminates.

## Exterior Finishes

Indulge in the epitome of maritime aesthetics with **2023 Mystique Silhouette 800 - Skye's** exterior finishes, meticulously crafted to elevate every detail. From flawless high-gloss gel coat surfaces to artfully faired GRP finishes, each element reflects precision and artistry. The patterned non-skid gel coat decks offer a perfect blend of safety and style, while submersible brilliance is ensured with durable antifouling paint below the waterline. UV Shield Technology protects laminated glass windows, and visionary hatches add an air of luxury. Polished stainless steel fittings showcase our commitment to excellence, adding refined elegance to every aspect of this exceptional vessel.

- **Elevate the Aesthetics:** Crafted with precision, our molded GRP surfaces boast a flawless high-gloss gel coat, setting a new standard
- **Artistry in Fairing:** Witness perfection as our faired GRP surfaces are meticulously sprayed with a premium, high-quality paint, adding a touch of excellence to every detail.
- **Traction Redefined:** Experience unparalleled safety and style with decks featuring a patterned molded non-skid gel coat finish, ensuring a secure footing while exuding a sleek, modern aesthetic.
- **Submersible Brilliance:** Below the waterline, vessels are protected by two coats of antifouling paint, ensuring durability and performance that stand the test of time.
- **UV Shield Technology:** Laminated glass window panes are not just elegant; they feature an integral fused black ceramic band, safeguarding the sealant against the harsh effects of UV rays.
- **Visionary Hatches:** Deck hatches take on a new dimension with tinted or opaque lenses, combining functionality with a touch of mystique, creating an ambiance of luxury and exclusivity.
- **Polished Precision:** Our commitment to excellence extends to the smallest details, with custom stainless steel fittings that are not just functional but also boast a bright polished finish, adding a touch of refinement to every aspect of the vessel.

### COCKPIT:

- Cushions to seating
- Beverage refrigerator
- Sun mats (2x)
- Waterproof marine speakers - pair (1x)
- Contoured solid surface worktop
- Garbage locker
- Stainless steel staircase to flybridge
- Storage lockers under seating (4x)

## Interior and Systems

**AquaAir Reverse Cycle two-stage Air conditioning.** 120,000 BTU multi-compressor marine chilled water system with individual cabin air handlers and remote controls in every cabin and saloon.

**Headhunter Royal Flush toilets (6x)** have been fitted to resemble customary household toilets in appearance and are touch-button operated. As they do not have any moving parts, they are very reliable.

**Sea Recovery Aquamatic Compact Water Maker** - 75 gal / 284 L per hr, automatic control, programmable to provide the yacht with a plentiful water supply.

**Drinking water softeners and faucets** on the flybridge, cockpit, and galley to reduce the need to stock a large quantity of bottled water.

- Furniture is constructed from plywood, solid wood & GRP sandwich panels
- The furniture is finished with wood veneer, varnish synthetic covering or synthetic leather
- Bulkheads - Wood veneer, vinyl, wallpaper, or synthetic suede
- Mattresses are to be custom upholstered with 150mm thick foam mattress
- Work surfaces: solid surfacing, Formica, or wood veneer
- Ceilings - Removable plywood panels covered in vinyl or synthetic suede
- Floors - Floor grade Formica flooring
- Bathroom walls - Smooth gloss GRP or Formica
- Bathroom floors - Nonskid patterned GRP
- OceanAir sky screens are to fitted to all cabin hatches
- LED lighting throughout

## Sleeping Accommodations

### Owner's Suite:

Step into a sanctuary of sophistication, where the spacious owner's suite captivates with panoramic views and elegant design. Immerse yourself in the plush surroundings, featuring a king-size bed, ample storage, and an en-suite bathroom adorned with premium fixtures. Every detail is meticulously curated to create a haven of relaxation and indulgence.

- King size bed with upholstered headboard
- Remote controlled roller blinds to windows.
- Bedside table / cupboard and lamps (2x)
- Upholstered lounge settee
- Vanity dressing table (1x), cupboards (4x) and ottoman
- Walk in clothes cupboard (1x)
- 138 cm UHD TV (1x)
- Electric powered ventilation fan (2x)
- Ensuite bathroom with frameless glass shower
- Solid surface worktop to wash hand basin, vanity cupboard and ceramic tiled floor

### Guest Cabins (4x):

Designed for discerning guests, the VIP cabins on Skye offer an unparalleled blend of comfort and style. Guests will be treated to sumptuous accommodations, with queen-size beds, private en-suite bathrooms, and thoughtfully appointed

amenities. The panoramic windows allow for breathtaking views, ensuring an unforgettable experience at sea.

- Queen size bed (1500 x 1900mm)
- Clothes hanging cupboard
- Bedside table/cupboard and lamps (2x)
- Ensuite bathrooms with hot and cold water, frameless glass showers enclosures, solid surface top to wash hand basins
- Electric powered ventilation fan

### **Captain's Cabin**

- Queen size loft bed (1430 x 1900mm)
- Office desk with storage cupboards under
- Office filing shelf
- Electric powered ventilation fan
- Ensuite bathroom with separate frameless shower doors
- Solid surface top to wash hand basin and cupboard (1no)

### **Crew Cabin**

- Queen size bed (1500 x 1900mm).
- Single bed size bed (800 x 1900mm) (2x)
- Ensuite bathroom with Solid surface top to wash hand basin, salon mixer, hanging and storage cupboards.
- Electric powered ventilation fan

## **Electrical Installation**

### **ELECTRICAL INSTALLATION:**

To enable the yacht to draw high power it can accept three-phase shore power as the majority of superyachts do.

The main battery bank on the yacht is 1000Ah at 24V of Victron Lithium batteries.

Inverter & Charger – For ease of maintenance, the yacht has been fitted with a standalone Victron 5kW Phoenix Inverter and a Victron Skylla TG 50A 3-phase battery charger

Dual 19 kVA Onan super silent low revving gensets in sound enclosures. To eliminate the need for manual changeover switches they are controlled by automatic electronic contactors.

- All wiring to CE regulations
- 2 x 19kW Onan Generator with instrument panel (2x)
- AC & DC Distribution boards
- Marinco 220v shore power plugs, stainless steel (2x)
- Shore power cable, 15m (50ft) (2x)
- Galvanic isolator
- Genset/shore power change over switch
- Victron inverter 24/5000/120 - 220V



- Victron Skyllar charger 24/100
- House bank 5 x 200 Amp Hr Victron Li-Fe batteries at 24v
- Start battery – 2x 75 amp batteries (2no)
- Victron Orion DC/DC converter 30amp (4no)
- 500amp fuse (1no)

## Steering System // Engines

Navigate the seas with precision and ease on Skye, thanks to our advanced steering system. Engineered for optimal control, the system ensures a smooth and responsive sailing experience. Whether you're captaining the ship or entrusting it to your crew, the steering system on Skye guarantees reliability and effortless maneuvering, allowing you to cruise with confidence and enjoy the open waters to the fullest.

### STEERING SYSTEM

- Whitlock-type chain and cable steering system
- Rudders are interlinked and connected to the steering wheel and aluminum steering quadrants with a stainless steel chain and wire.
- Quick bow Thruster, 24VDC 10kw

### ENGINES

- Volvo D3-200 HP diesel engines with, ZF 63A gearbox, ratio 2.71 (2x)
- Exhaust system, Racor fuel filters, and raw water strainers
- Volvo 7" glass cockpit engine instrument panel
- Stainless steel 50mm propeller shafts (2x)
- The propeller shaft is supported by P brackets with cutlass bearings (2x).
- Mechanical shaft seal (dripless)
- Brunton's 4-bladed Varifold folding propellers (2x)
- Electronic engine controls (Throttle & gear shift)
- Exhaust water traps, gooseneck, and outlets (2x)
- Stainless steel sea cocks
- 50mm Soundproofing to engine compartments
- Engine compartment ventilation fans (2x)
- Diesel tank –1050 Liters/277 gals (2x)

## Instrumentation

Where possible, **Raymarine instrumentation** has been fitted. The yacht has been fitted with two large touchscreen Axiom Pro MFD's, p70 Instruments, and an Evolution Autopilot. The operator is able to configure the displays to show the data of his personal choice.

**Raymarine Thermal Camera** – To enhance the boater's overall situational awareness, the yacht has been equipped with a FLIR M232 with pan and tilt night vision camera

The yacht has been fitted with **Doppler Radar** as used by meteorologists, which provides high-quality data compared to standard radars.



- Raymarine Axiom Pro16 RVX MFD with key pad
- Raymarine Axiom 16XL MFD multifunction display
- Raymarine p70 evolution autopilot control & colour display
- Jefa autopilot rotary drive unit
- i70 wind multifunction color display (2x)
- Raymarine smart transducer
- Raymarine Quantum Doppler Radar 24nm
- Raymarine Ray53 VHF radio
- Offshore 135 binnacle compass
- Echopilot forward facing 3D sonar with 2'x5" transducers
- Trumpet horn dual
- La Crosse Weather station
- Search light

## Plumbing // Safety Equipment

Onboard Skye, our plumbing and safety equipment are meticulously designed to ensure a seamless and secure maritime experience. The plumbing system, engineered for efficiency, delivers reliable water supply throughout the vessel, providing comfort and convenience. Safety takes precedence with state-of-the-art equipment, including advanced fire suppression systems, life-saving rafts, and top-notch emergency response mechanisms. Sail with confidence, knowing that Skye is equipped with cutting-edge technology to prioritize both comfort and safety on your maritime adventures.

### PLUMBING

- Water maker - 6814 lit/day / 1800 gal/day
- Fresh water tanks coated with food grade epoxy -3500L / 925gal
- Black water holding tanks -3800L L / 1004 gal
- Grey water tanks - 2090 L / 552 gal
- Jabsco quiet flush electric crew toilet (1x)
- Headhunter Royal flush electric toilets (6x)
- Headhunter puffer accumulator tank - 7.6l / 2gal (2x)
- Quick water heaters - 80L / 21gal (2x)
- DAB Booster silent 0.75Kw 230v pump (2x)
- Zenit draga 2M black water pump - 2x
- Johnson viking power grey water pump 24v (2x)
- Rulemate 1100 bilge pump(6x)

### SAFETY EQUIPMENT

- Viking 8UKL rescue liferaft (2x)
- Self activating fire extinguisher in engine rooms (2x)
- Fire Extinguishers -1.5L (10x) and 4.5kg (2x)
- Fire Blanket
- smoke & Co2 detectors (14x)
- Lifebouy ring, Danbouy & Lifelink throwing line
- Lifebouy ring with MOB light
- Flares- handheld (6x), parachute (4x), smoke(2x)
- Water grab bag with thermal blankets (12x), emergency nav lights, fog horn, air horn, emergency VHF aerial, Solas 2 signal card & bungs

- Harken deluxe boson's chair
- Solas folding life jacket adult (10x) child (4x)
- Sigma inflatable lifejacket with harness line(4x)
- Lalizas safety harness with Dring (6x)
- Telescopic boat hook
- Anchor ball (2x) and cone (1x)
- Flags C, N, Q, V, and W
- Sail sewing repair kit
- Fire buckets (2x)
- Ocean Signal EPIRB1 rescue me
- Medical kit (annexure 3 under 200 tons)

## Disclaimer

The company offers the details of this vessel in good faith but cannot guarantee or warrant the accuracy of this information nor warrant the condition of the vessel. A buyer should instruct his agents, or his surveyors, to investigate such details as the buyer desires validated. This vessel is offered subject to prior sale, price change or withdrawal without notice.



2023 Mystique 800 Silhouette - SKYE



2023 Mystique 800 Silhouette - SKYE



2023 Mystique 800 Silhouette - SKYE



2023 Mystique 800 Silhouette - SKYE





2023 Mystique 800 Silhouette - SKYE



2023 Mystique 800 Silhouette - SKYE



2023 Mystique 800 Silhouette - SKYE



2023 Mystique 800 Silhouette - SKYE





2023 Mystique 800 Silhouette - SKYE



2023 Mystique 800 Silhouette - SKYE





2023 Mystique 800 Silhouette - SKYE



2023 Mystique 800 Silhouette - SKYE



2023 Mystique 800 Silhouette - SKYE



2023 Mystique 800 Silhouette - SKYE





2023 Mystique 800 Silhouette - SKYE



2023 Mystique 800 Silhouette - SKYE



2023 Mystique 800 Silhouette - SKYE



2023 Mystique 800 Silhouette - SKYE





2023 Mystique 800 Silhouette - SKYE



2023 Mystique 800 Silhouette - SKYE



2023 Mystique 800 Silhouette - SKYE



2023 Mystique 800 Silhouette - SKYE



2023 Mystique 800 Silhouette - SKYE



2023 Mystique 800 Silhouette - SKYE





2023 Mystique 800 Silhouette - SKYE



2023 Mystique 800 Silhouette - SKYE



2023 Mystique 800 Silhouette - SKYE



2023 Mystique 800 Silhouette - SKYE





2023 Mystique 800 Silhouette - SKYE



2023 Mystique 800 Silhouette - SKYE



2023 Mystique 800 Silhouette - SKYE



2023 Mystique 800 Silhouette - SKYE





2023 Mystique 800 Silhouette - SKYE



2023 Mystique 800 Silhouette - SKYE



2023 Mystique 800 Silhouette - SKYE

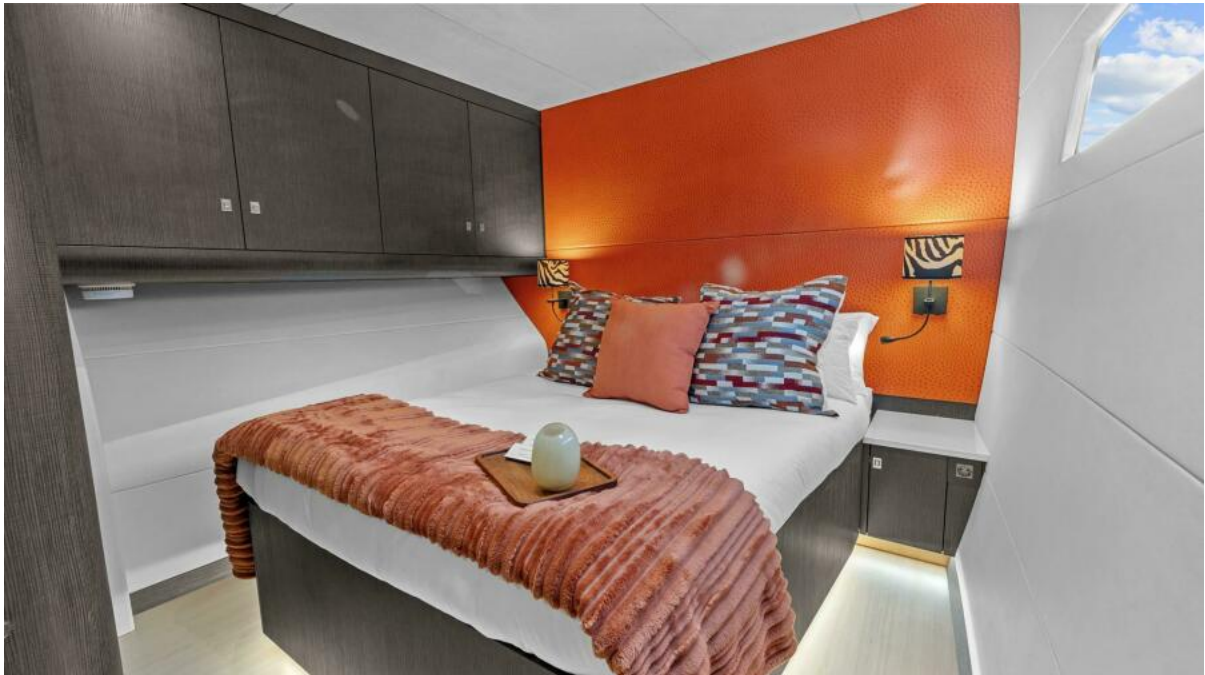


2023 Mystique 800 Silhouette - SKYE





2023 Mystique 800 Silhouette - SKYE



2023 Mystique 800 Silhouette - SKYE





2023 Mystique 800 Silhouette - SKYE



2023 Mystique 800 Silhouette - SKYE



2023 Mystique 800 Silhouette - SKYE



2023 Mystique 800 Silhouette - SKYE



2023 Mystique 800 Silhouette - SKYE



2023 Mystique 800 Silhouette - SKYE





2023 Mystique 800 Silhouette - SKYE



2023 Mystique 800 Silhouette - SKYE



2023 Mystique 800 Silhouette - SKYE



2023 Mystique 800 Silhouette - SKYE



2023 Mystique 800 Silhouette - SKYE



2023 Mystique 800 Silhouette - SKYE



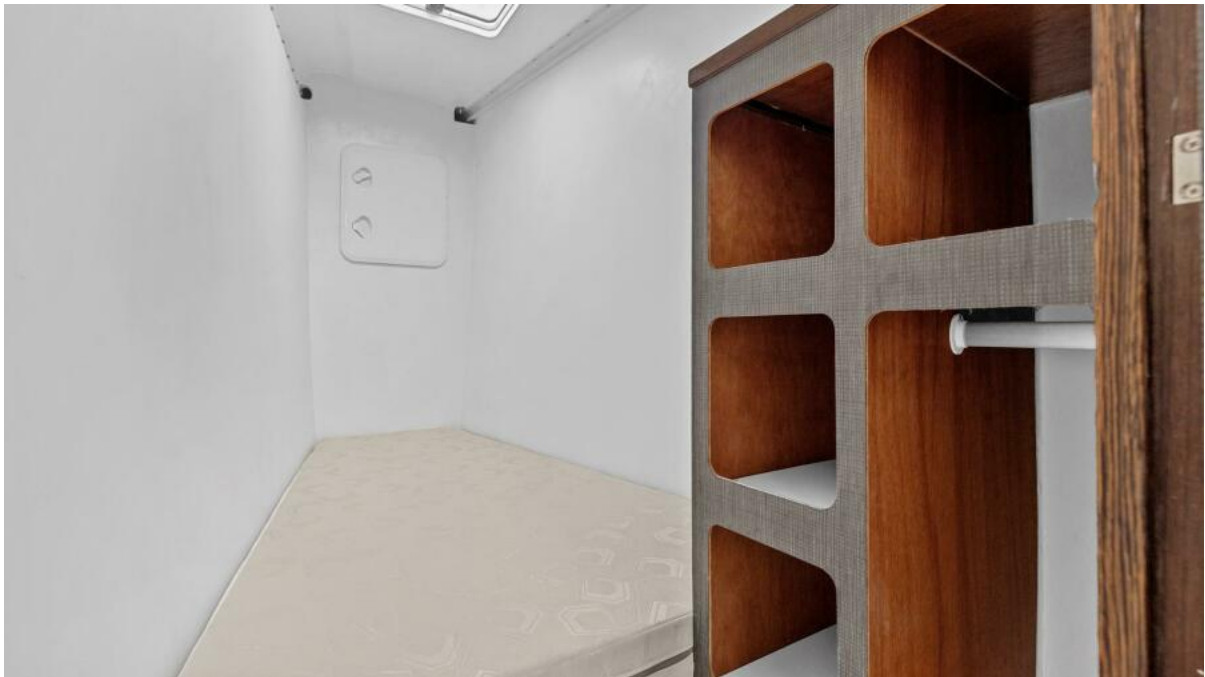


2023 Mystique 800 Silhouette - SKYE



2023 Mystique 800 Silhouette - SKYE





2023 Mystique 800 Silhouette - SKYE



2023 Mystique 800 Silhouette - SKYE

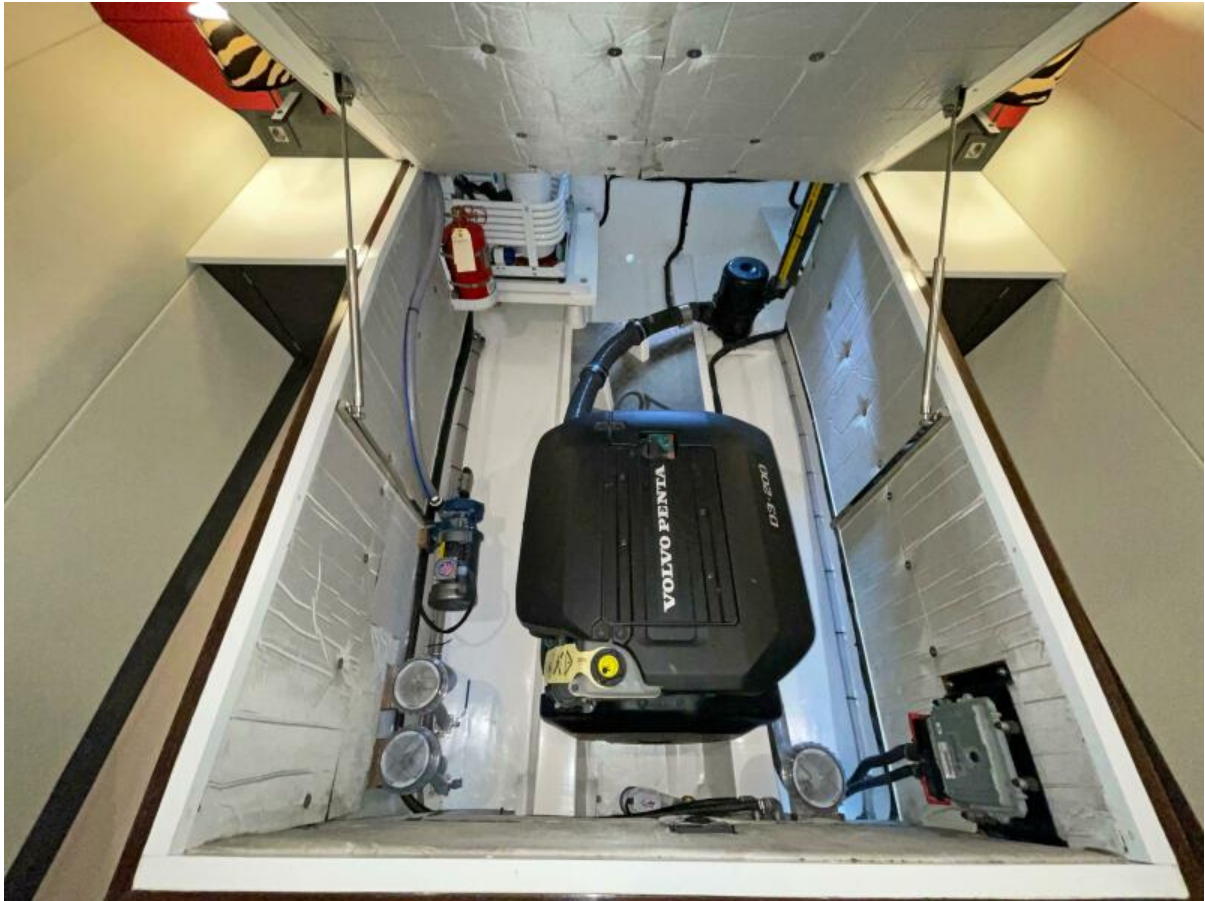


2023 Mystique 800 Silhouette - SKYE



2023 Mystique 800 Silhouette - SKYE





2023 Mystique 800 Silhouette - SKYE



2023 Mystique 800 Silhouette - SKYE





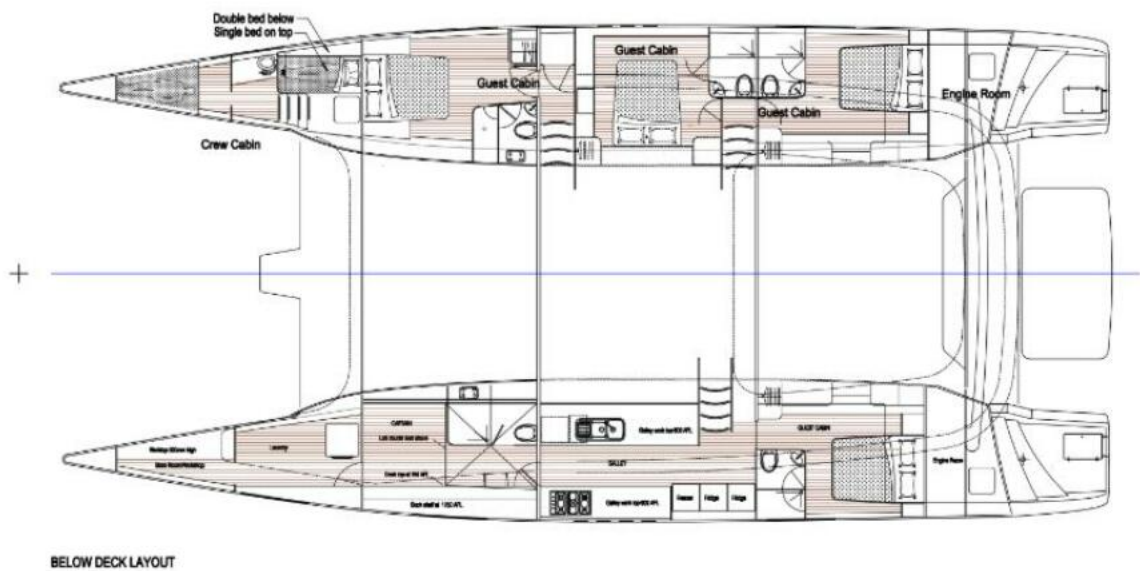
2023 Mystique 800 Silhouette - SKYE



2023 Mystique 800 Silhouette - SKYE

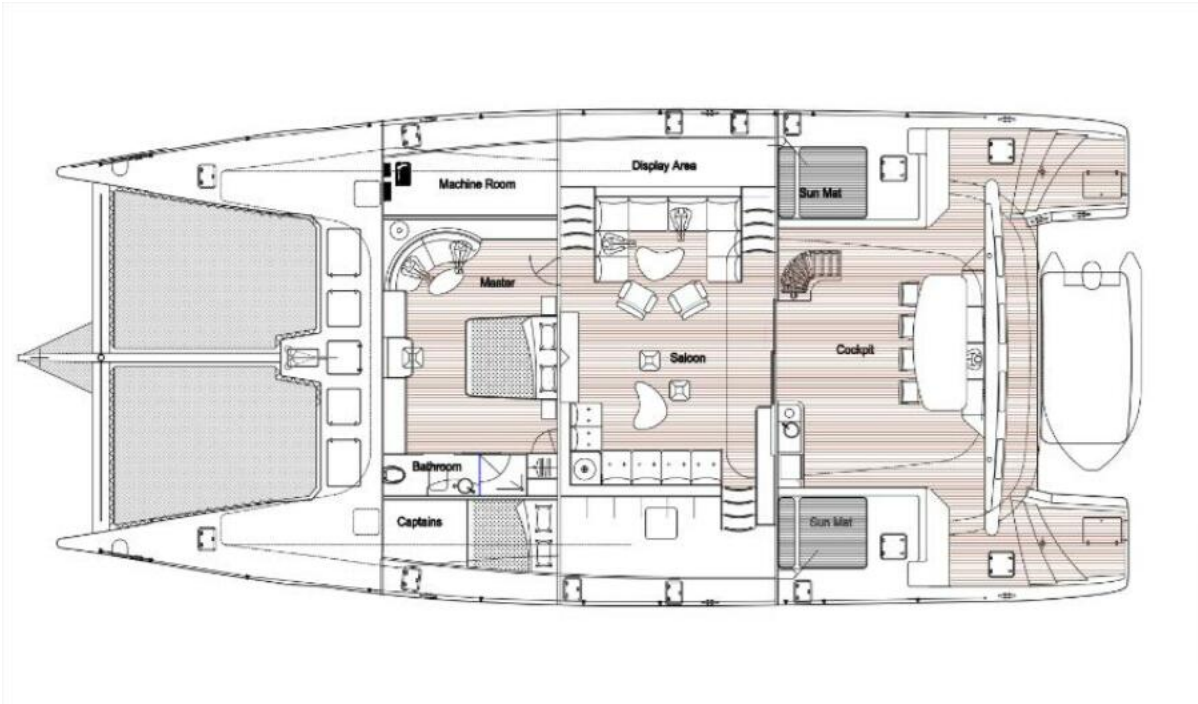


2023 Mystique 800 Silhouette - SKYE

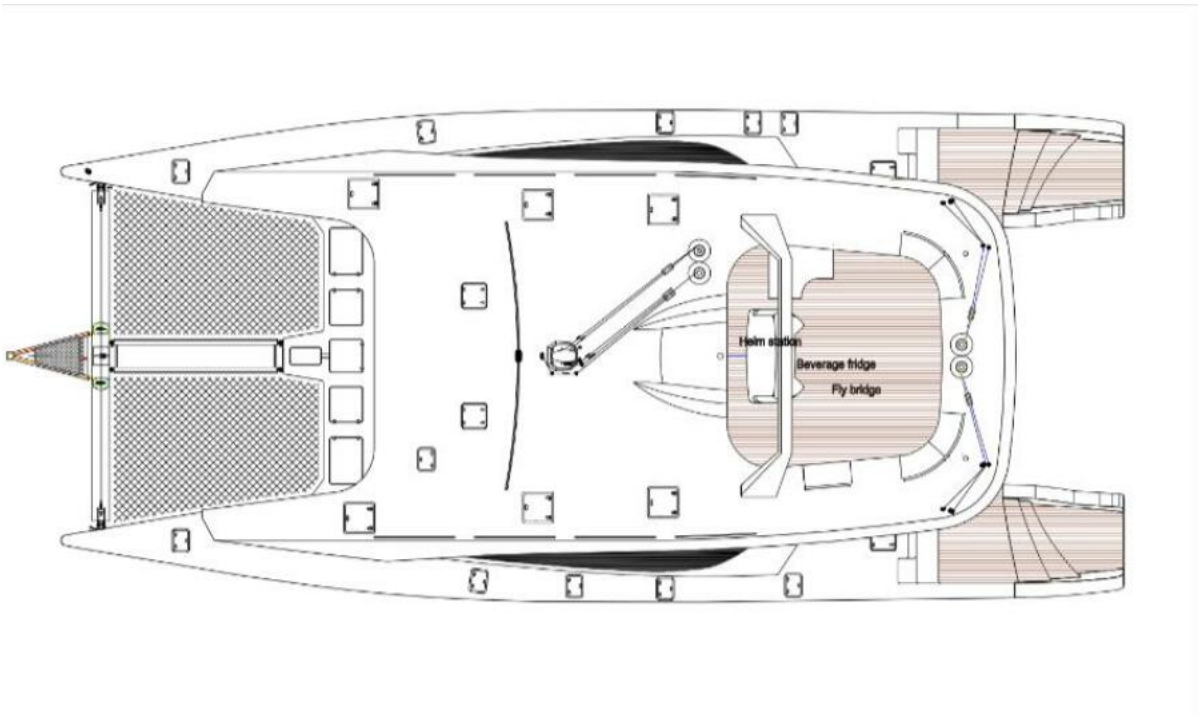


2023 Mystique 800 Silhouette - SKYE





2023 Mystique 800 Silhouette - SKYE



2023 Mystique 800 Silhouette - SKYE