



70' (21.34m) 2020 Sunreef  
St Thomas Virgin Islands (US)



## OVERVIEW

Manufacturer:	Sunreef	Hull Material:	Composite
Engines:	2 John Deere	Cruise Speed:	Knots
Engine Model:	4045AFM85	Max Speed:	Knots
Engine HP:	225	Cabins/Heads:	5 / 7
Beam:	35' 7"	Fuel Type:	Diesel
Max Draft:	6' 3"	Fuel:	1056 G (3997.39 L)
Water:	423 G (1601.23 L)		

**\$5,400,000**



## Data Sheet

Category: Catamaran  
Condition: Used  
Model Year: 2020  
Beam: 35'7" (10.85m)  
Max Draft: 6' 3" (1.91m)  
LOA: 74' 9" (22.78m)  
Cabins: 5  
Sleeps: 10  
Queen Berths: 5  
Heads: 7

Crew Cabins: 2  
Crew Sleeps: 3  
Knots  
Knots  
Fuel Type: Diesel  
Hull Material: Composite  
Air Conditioning: Yes

Dry Weight: 139310 lbs  
Bow Thruster: Yes  
Fuel Tank: 1056 gal (3997.39 liters)  
Fresh Water: 423 gal (1601.23 liters)  
Holding Tank: 93 gal (352.04 liters)  
Imported: No  
Builder: Sunreef  
HIN/IMO: SYR70A02B920

## Engines/Generators

### Engine 1

John Deere  
4045AFM85  
Inboard  
225HP  
167.78KW  
Fuel: Diesel  
Hours: 740  
Hours Date: 11-29-2023  
Year: 2020  
Location: Port

### Engine 2

John Deere  
4045AFM85  
Inboard  
225HP  
167.78KW  
Fuel: Diesel  
Hours: 720  
Hours Date: 11-29-2023  
Year: 2020  
Location: Starboard

### Generator 1

KOHLER  
18EFKOZD  
18KW  
Hours: 5300

### Generator 2

KOHLER  
18EFKOZD  
18KW  
Hours: 4300

## Summary/Description

The 2020 Sunreef 70 Sail Catamaran, renowned for its luxurious design and advanced technology, presents a unique offering in the world of high-end sailing. Known as "Ocean Vibes," this exquisite model boasts a spacious 5-cabin layout, an expansive flybridge, and a bow terrace.

## Propulsion Systems

The propulsion system of the 2020 Sunreef 70 Sail Catamaran features two high-performance engines, one installed in each hull, delivering an exceptional blend of power and efficiency. Here are the details of the engines based on the information from the owner's manual:

- 1. Engine Specification:** The yacht is equipped with two John Deere 4045AFM85 diesel engines, well-regarded for their reliability and performance. These engines are designed to meet the demands of marine applications, offering robust power delivery and efficient operation.
- 2. Performance and Capacity:** Each engine has a crankshaft power rating of 168 kW (225 hp) at 2600 RPM, ensuring ample thrust for the catamaran. The engines have a displacement of 4.5 liters (275 cubic inches).
- 3. Engine Design:** The engines are inline-4 cylinders with a compression ratio of 16.7:1, utilizing a direct injection combustion system. This design is optimized for marine use, providing a balance between power output and fuel efficiency.
- 4. Advanced Features:** The engines are turbocharged and aftercooled, further enhancing their performance. The aftercooling system is seawater cooled, an essential feature for marine engines operating in varying temperature conditions. Additionally, the engines have a closed engine crankcase vent system, which helps in maintaining environmental compliance and engine cleanliness.
- 5. Additional Specifications:** Importantly, they comply with EPA Commercial Marine Tier 3 and IMO MARPOL Annex VI Tier II standards, emphasizing their environmental friendliness. The engines are mounted using a rubber-type flexible mounting system, which aids in reducing vibrations and enhancing onboard comfort.

## Advanced Mast, Rigging & Sails

The 2020 Sunreef 70 Sail Catamaran boasts a state-of-the-art mast and sail system, which is a harmonious blend of functionality and design, enhancing the sailing experience for its users.

- 1. Mast and Boom Specifications:** The catamaran features a robust mast and boom supplied by Sparcraft, known for their high-quality marine products. The mast, towering at an impressive length of 104-ft, and the boom, measuring 27-ft, are

both constructed from durable aluminum. This choice of material ensures a perfect balance between strength and weight, crucial for the catamaran's performance. The boat is equipped with steps at the bottom of the mast for easy access to the boom, and padeyes on the sides of the craft to fix the boom with a preventer rope, ensuring safe and efficient sail handling.

2. Sails and Rigging Details: The catamaran's sail wardrobe comprises a full batten main sail, a Genoa, and a Gennaker, with the areas being 170 m<sup>2</sup>, 140 m<sup>2</sup>, and 290 m<sup>2</sup> respectively. The main sail and Genoa are made from Dacron, a material known for its durability and performance, while the Gennaker is made from polyester, providing excellent performance in light wind conditions. The Genoa and Gennaker are equipped with Bamar furlers (NDE2C600 for the Genoa and PE WL 8/10T for the Gennaker), facilitating ease of handling and control. Additionally, the sailboat utilizes Harken self-tailing winches for sheets and halyards control. These winches, located on the flybridge, are electrically controlled but can also be operated manually with a winch handle. Each winch has thermal switches for safety and efficiency, ensuring a seamless sailing experience. The boat also features a winch for the traveler motor, with its control buttons situated at the front part of the flybridge, and all winches are powered by 24V DC main batteries.

This advanced mast, rigging, and sail configuration on the Sunreef 70 provides a blend of performance, safety, and ease of use, making it an ideal choice for both experienced sailors and those new to sailing luxury catamarans.

## Interior Guest Accommodations

Ocean Vibes," a 2020 Sunreef 70 Sail Catamaran, exemplifies luxurious maritime living with its well-designed interior and exceptional guest accommodations. The yacht features a spacious 5-cabin layout, accommodating up to 10 guests in comfort and style. ( Plus Crew Accommodations for 3) Each guest stateroom is furnished with queen-size beds, ensuring a plush and comfortable stay for all guests onboard. The interior design is a testament to Sunreef's dedication to luxury, with each space crafted to provide an unrivaled experience of elegance and comfort.

The catamaran's generous 3090 Sq-ft living space showcases a classic yet modern aesthetic, designed to maximize comfort and functionality. Guests can indulge in various activities, from basking in the sun to enjoying alfresco dining in picturesque surroundings. The yacht's vast flybridge and bow terrace, accessible directly from the main salon, add to its appeal, offering panoramic views and ample space for relaxation. Additionally, the hydraulic aft platform enhances the experience, creating perfect conditions for various watersports and leisure activities. This blend of classic inspiration and contemporary design makes "Ocean Vibes" not just a sailing vessel but a floating luxury home, ideal for both relaxation and entertainment.

## Watersports, Activities & Lifestyle Features

The 2020 Sunreef 70 "Ocean Vibes" is a haven for watersports enthusiasts, offering a myriad of activities that make the most of its stunning maritime setting. The yacht's innovative design includes a hydraulic aft platform, which serves as an ideal launchpad for a variety of watersports. This platform, extending across the yacht's entire 35.4 ft beam, provides ample space for guests to engage in activities like jet skiing, paddleboarding, and snorkeling. The easy access to the water enhances the overall experience, allowing guests to effortlessly transition from the comfort of the yacht to the thrill of ocean adventures. Additionally, the spacious design of the stern cockpit not only contributes to onboard comfort but also facilitates the storage and use of watersports equipment, ensuring that everything guests need for their aquatic adventures is within easy reach.

Beyond the thrill of active watersports, "Ocean Vibes" also offers ample opportunities for relaxation and leisure in a marine environment. The vast flybridge and bow terrace, accessible directly from the main saloon, are perfect for guests who prefer to soak up the sun and enjoy the ocean breeze in a more tranquil setting. These areas provide a picturesque backdrop for unwinding, socializing, and alfresco dining, making them ideal for those who wish to experience the ocean's beauty in a more serene manner. The blend of high-octane watersport facilities and serene lounging areas ensures that "Ocean Vibes" caters to a wide range of preferences, making every moment spent on board a memorable and enjoyable experience.

## Dining Experiences

Aboard the 2020 Sunreef 70 "Ocean Vibes," guests are treated to a variety of dining experiences, tailored to suit their preferences and dietary needs. The yacht's modern galley enables the onboard chef to prepare a range of dishes, from fresh seafood to international cuisine. Dining options include the elegant main saloon for a more formal atmosphere, as well as alfresco dining on the flybridge or aft deck, offering panoramic views of the surrounding seascape. These versatile dining settings, combined with the focus on quality and freshness, ensure a satisfying culinary experience for every guest onboard.

## Navigation, Docking, Thrusters & Automated Control Systems

For navigation and communication, the yacht is equipped with state-of-the-art technology, ensuring safe and efficient voyages. The flybridge helm station features a comprehensive array of equipment, including a Dockmate wireless charger, Raymarine AXIOM XL 16" Multifunction display, Raymarine Ray90 VHF, Raymarine i70s multifunctional display, and a ZF Cruise Command engine dual throttle. Additionally, the yacht includes a Side Power bow thruster joystick and a Jabsco 24V remote control searchlight, enhancing maneuverability and visibility. The saloon chart table is similarly equipped with advanced navigation tools, including a Microsoft Surface Go tab, Furuno NX-700-A Navtex receiver, and a Kohler generator control panel, providing a centralized hub for monitoring and controlling various yacht functions.

## Experiencing the Best of the Virgin Islands

Based in St. Thomas, the "Ocean Vibes" Sunreef 70 is the perfect platform to indulge in the US Virgin Islands' best offerings. Its location enables guests to embark on unforgettable ocean adventures to places like Little Buck Island, known for its vibrant coral reefs and diverse marine life, ideal for snorkeling and underwater exploration. On land, St. Thomas offers a rich blend of culture and history, with attractions like the interactive Pirate Treasure Museum and the bustling capital, Charlotte Amalie, for culinary adventures.

Guests can also embrace the natural beauty of St. Thomas at Magens Bay Park, offering serene beach experiences and nature trails, or visit Drake's Seat for stunning sunsets. For shopping and dining, Yacht Haven Grande offers luxurious settings with high-end boutiques and gourmet restaurants. Art enthusiasts can explore Tillett Gardens, showcasing local art and culture, while adventurers can delve into the underwater world at Coki Point Beach, a snorkeling and diving paradise. For a peaceful retreat, Phantasea Tropical Botanical Garden provides a lush environment, making "Ocean Vibes" an ideal base for a varied Caribbean adventure.

## Entertainment, Connectivity & AV Systems

Onboard the 2020 Sunreef 70 "Ocean Vibes," entertainment and connectivity are key components of the guest experience, seamlessly blending modern technology with luxury. The yacht is equipped with a state-of-the-art entertainment system, including high-definition TVs, a comprehensive audio system, and a variety of multimedia options. Guests can enjoy their favorite movies, music, or sports events in the comfort of the spacious saloon or in their private cabins, each equipped with its own entertainment setup. Additionally, the yacht offers a selection of games and

leisure activities, ensuring that guests of all ages remain engaged and entertained throughout their journey.

Connectivity is a crucial aspect of the "Ocean Vibes" experience, particularly for those who need to stay in touch with the outside world or work remotely. The yacht is equipped with high-speed internet access, allowing guests to browse the web, stream media, or conduct business as needed. Wi-Fi coverage extends throughout the yacht, ensuring guests can stay connected whether they are relaxing in their cabins, sunbathing on the deck, or dining alfresco. This blend of entertainment and connectivity options ensures that guests aboard "Ocean Vibes" can enjoy a perfect balance of relaxation, recreation, and connectivity, catering to both their leisure and professional needs.

## **Air Conditioning: Advanced Frigomar Chilled Water system**

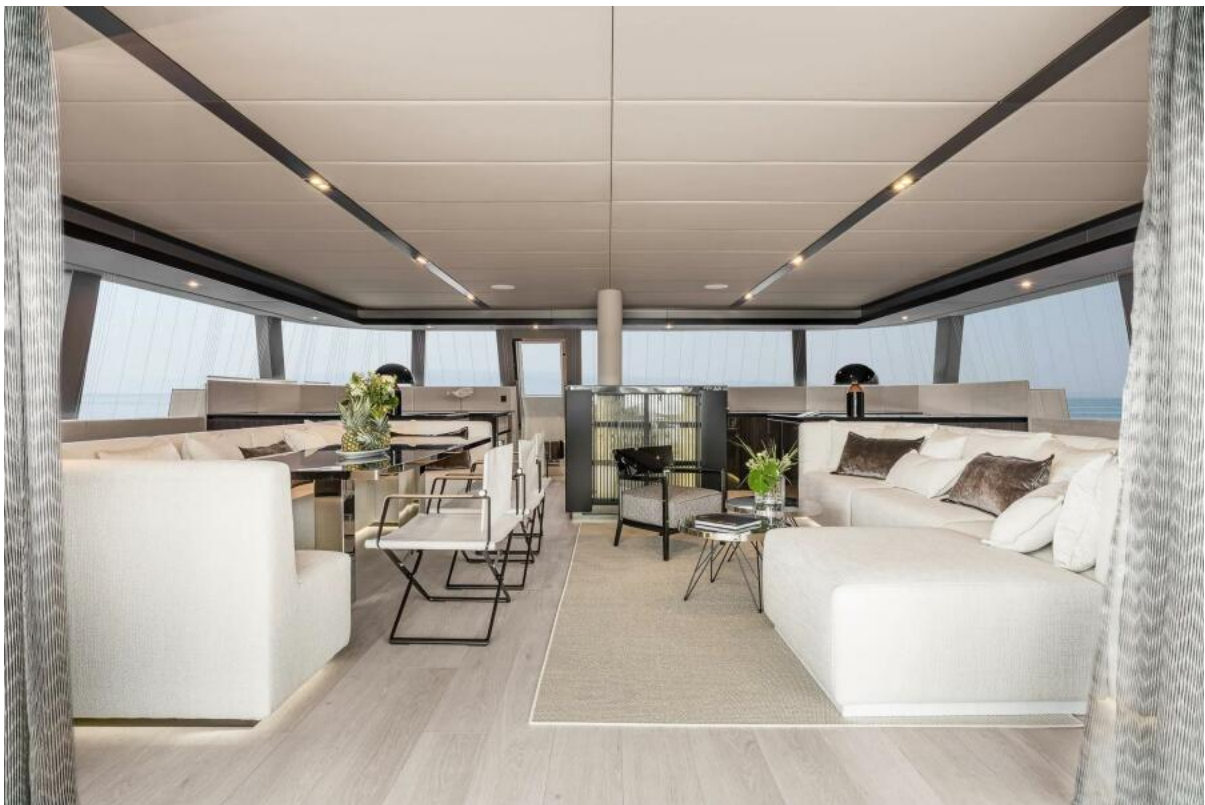
The 2020 Sunreef 70 Sail Catamaran is equipped with an array of technical features designed for efficiency, safety, and comfort. The chilled water circulation pump, Frigomar 708 50/60 Hz, is a key component of the air conditioning system, ensuring a comfortable environment onboard. This system is enhanced with glycerol-based antifreeze refrigerant, maintaining optimal pressure for efficient cooling. The chilled water piping, made of rigid plastic tubing from Georg Fisher ABS, is insulated with synthetic rubber foam, ensuring energy efficiency and reduced thermal loss.

## **Fire Protection & Safety**

Safety is a paramount concern on the Sunreef 70, and it is equipped with an advanced Fireboy Xintex MA2-400 automatic fire extinguishing system in each engine room. This system is designed to automatically activate in case of fire, shutting down engines, generators, engine room fans, and fuel pumps while deploying extinguishers to combat the fire. Additionally, the yacht's ventilation system is meticulously designed, with air intake through custom-built plenum boxes and 24V DC exhaust fans, ensuring optimal air circulation. The engine room ventilation is integrated with the fire extinguishing system for automatic shutdown in emergencies.































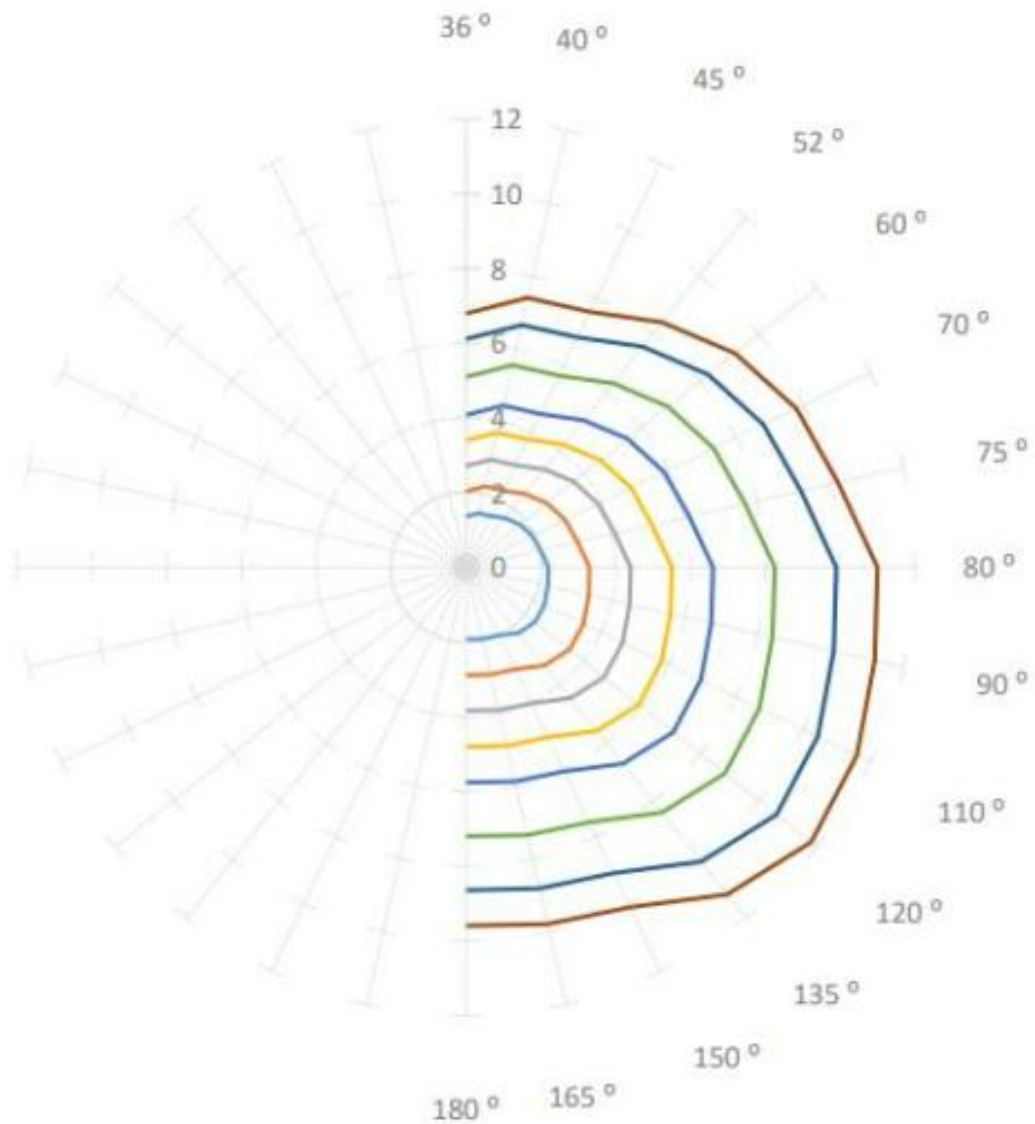








## Sunreef 70A Polar plot TWS/TWA/SOG



**This document is for information purpose only and cannot be contractual**

## Sunreef 70A SPEED PREDICTION

The speed prediction are analysed below (in knots):

	4 kt	6 kt	8 kt	10 kt	12 kt	15 kt	18 kt	20 kt
36 °	1,36	2,04	2,72	3,4	4,08	5,1	6,12	6,8
40 °	1,48	2,22	2,96	3,7	4,44	5,55	6,66	7,4
45 °	1,52	2,28	3,04	3,8	4,56	5,7	6,84	7,6
52 °	1,68	2,52	3,36	4,2	5,04	6,3	7,56	8,4
60 °	1,84	2,76	3,68	4,6	5,52	6,9	8,28	9,2
70 °	1,96	2,94	3,92	4,9	5,88	7,35	8,82	9,8
75 °	2,04	3,06	4,08	5,1	6,12	7,65	9,18	10,2
80 °	2,2	3,3	4,4	5,5	6,6	8,25	9,9	11
90 °	2,24	3,36	4,48	5,6	6,72	8,4	10,08	11,2
110 °	2,32	3,48	4,64	5,8	6,96	8,7	10,44	11,6
120 °	2,36	3,54	4,72	5,9	7,08	8,85	10,62	11,8
135 °	2,24	3,36	4,48	5,6	6,72	8,4	10,08	11,2
150 °	2,02	3,03	4,04	5,05	6,06	7,575	9,09	10,1
165 °	1,96	2,94	3,92	4,9	5,88	7,35	8,82	9,8
180 °	1,92	2,88	3,84	4,8	5,76	7,2	8,64	9,6