



58' (17.68m) 1999 Azimut  
Hollywood Florida United States



## OVERVIEW

Manufacturer: *Azimut*

Engines: 2 MTU 8V 183 TE 93

Engine Model: MTU 8V 183 TE 93

Engine HP: 767

Beam: 15' 9"

Max Draft: 4' 1"

Water: 238 G (900.93 L)

Hull Material: Fiberglass

Cruise Speed: Knots

Max Speed: Knots

Cabins/Heads: 3 / 3

Fuel Type: Diesel

Fuel: 687 G (2600.58 L)

**\$449,000**



## Data Sheet

Category: Motor Yachts  
Subcategory: Aft Cabin  
Condition: Used  
Model Year: 1999  
Beam: 15'9" (4.80m)  
Max Draft: 4' 1" (1.24m)  
(0.00m)  
LOA: 58' (17.68m)  
Cabins: 3  
Single Berths: 2  
Double Berths: 2  
Heads: 3

Knots  
Knots  
Fuel Type: Diesel  
Hull Material: Fiberglass

Dry Weight: 48400 lbs  
Fuel Tank: 687 gal (2600.58 liters)  
Fresh Water: 238 gal (900.93 liters)  
Imported: No  
HIN/IMO: XAX58098J999  
Stock #: B93012

## Engines/Generators

### Engine 1

MTU 8V 183 TE 93  
MTU 8V 183 TE 93  
Inboard  
767HP  
571.95KW  
Fuel: Diesel  
Hours: 2018  
Year: 2000  
Location: Port

### Engine 2

MTU 8V 183 TE 93  
MTU 8V 183 TE 93  
Inboard  
767HP  
571.95KW  
Fuel: Diesel  
Hours: 2018  
Year: 2000

## Summary/Description

This Azimut 58' is the perfect size motor yacht for a private family as well as a charter vessel

This Azimut 58' is the perfect size motor yacht for a private family as well as a charter vessel.

Her exterior lines are unmistakably Azimut and the interior space is well distributed with Italian style interior furniture and decoration.

The galley is located down and to port aft. The dinning area welcomes a big family and the table centrally located in the salon is large enough to serve as a conference for meetings and planning of the next day route.

The lower helm offers ample sitting and a 360 degrees view of the ocean around the yacht and the upper station also has great visibility when docking since the captain is able to see the stern through the flybridge hatch.

The vessel presents a master stateroom and a VIP cabin both with ensuite bathrooms while the twin cabin shares the day head with the rest of the guests.

## Manufacturer Provided Description

The flybridge of the Azimut 58 is equipped with a built-in sink, fridge, and barbecue - ideal for an enjoyable open air snack. The spacious saloon provides a dining table that can be converted into an extra coffee table if required. The 58 also has an ergonomic wheelhouse abaft of the saloon. The helm seat adjusts electrically to eight different positions - an exclusive feature of the 58. The owner's stateroom is elegant and roomy, with three large wardrobes and a bedside table, offering all the comforts of a large bedroom. The Azimut 58 also offers a VIP stateroom.

## Engine Notes

Top speed of boat: 37.97442mph

## Disclaimer

The company offers the details of this vessel in good faith but cannot guarantee or warrant the accuracy of this information nor warrant the condition of the vessel. A buyer should instruct his agents, or his surveyors, to investigate such details as the buyer desires validated. This vessel is offered subject to prior sale, price change or withdrawal without notice.



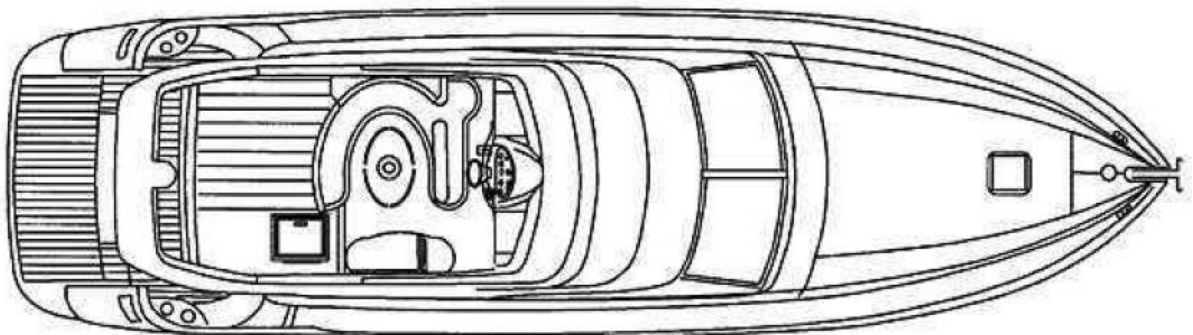
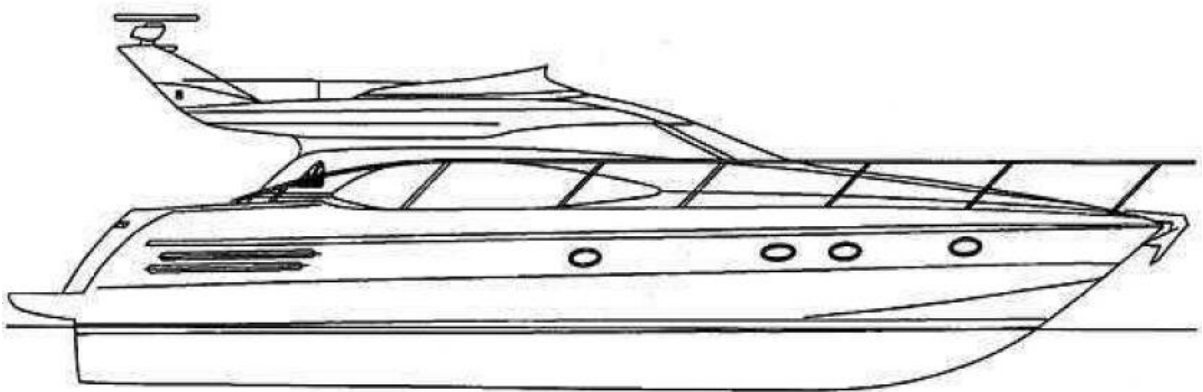


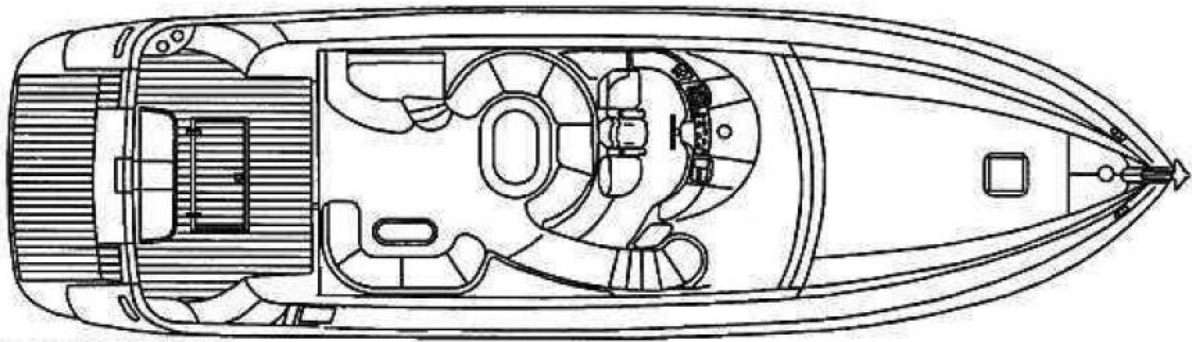




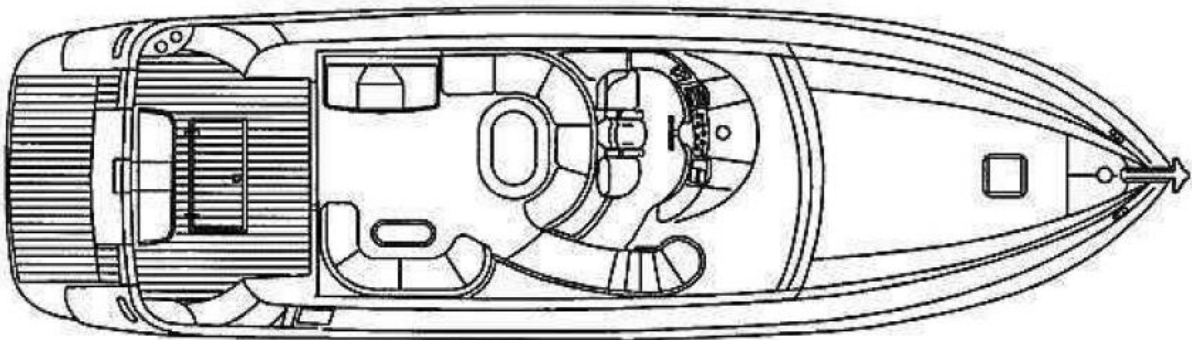
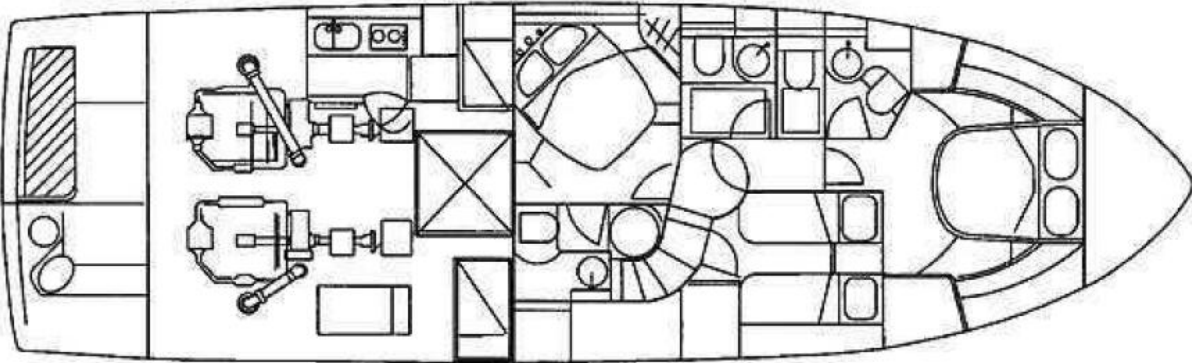








**3 CABIN VERSION**



**2 CABIN VERSION**

