



# IN THE ZONE

110' (33.53m) 2012 Horizon P110 Tri Deck Series  
Fort Lauderdale Florida United States



## OVERVIEW

**\$4,995,000**

|               |                  |                |                     |
|---------------|------------------|----------------|---------------------|
| Manufacturer: | Horizon          | Hull Material: | Composite           |
| Engines:      | 2 CATERPILLAR    | Cruise Speed:  | 16 Knots            |
| Engine Model: | C32 ACERT        | Max Speed:     | 20 Knots            |
| Engine HP:    | 1900             | Cabins/Heads:  | 4 /                 |
| Beam:         | 23' 6"           | Fuel Type:     | Diesel              |
| Max Draft:    | 6' 4"            | Fuel:          | 5000 G (18927.05 L) |
| Water:        | 850 G (3217.6 L) |                |                     |



## Data Sheet

Category: Trideck  
Subcategory: Flybridge  
Condition: Used  
Model Year: 2012  
Refit Year: 2020  
Documented Year: 2012  
Beam: 23'6" (7.16m)  
Max Draft: 6' 4" (1.93m)  
LOA: 110' (33.53m)  
LWL: 96' 3" (29.34m)  
Cabins: 4  
Sleeps: 8  
Convertibles: 2  
Double Berths: 1  
King Berths: 1  
Full Beam Master: Yes

Maximum Speed: 20 Knots  
Cruise Speed: 16 Knots  
Range NM: 850  
Fuel Type: Diesel  
Super Structure Material: GRP  
Hull Material: Composite  
Hull Shape: Semi Displacement  
Air Conditioning: Yes

Gross Tonnage: 221  
Displacement: 125 tonnes  
Stabilizer Brand: SeaStar  
Bow Thruster: Yes  
Stern Thruster: Yes  
Fuel Tank: 5000 gal (18927.05 liters)  
Fresh Water: 850 gal (3217.6 liters)  
Holding Tank: 300 gal (1135.62 liters)  
Imported: No  
Builder: Horizon  
Designer: Horizon Design Team  
Interior Designer: Espinosa Yacht Design  
Exterior Color: White  
HIN/IMO: WHY123456788

## Engines/Generators

### Engine 1

CATERPILLAR  
C32 ACERT  
Inboard  
1900HP  
1416.83KW  
Fuel: Diesel  
Hours: 3029  
Hours Date: 10-04-2023  
Location: Port

### Engine 2

CATERPILLAR  
C32 ACERT  
Inboard  
1900HP  
1416.83KW  
Fuel: Diesel  
Hours: 3022  
Hours Date: 10-04-2023  
Location: Starboard

### Generator 1

Onan/Cummings  
MDDCG w/ Sound Shields - PORT  
50KW  
Hours: 7310  
Hours Date: 10/04/2023

### Generator 2

Onan/Cummings  
MDDCG w/ Sound Shields - STBD  
50KW  
Hours: 7263  
Hours Date: 10/04/2023

## Summary/Description

IN THE ZONE was completed in 2012 and last refitted in 2020. This Tri-deck Horizon can accommodate up to 8 guests in 4 staterooms and has a crew of 4-5. It is powered by twin diesel Caterpillar engines, allowing it to comfortably cruise at 16 knots with a maximum speed of 20 knots. The yacht has an

*IN THE ZONE was completed in 2012 and last refitted in 2020. This Tri-deck Horizon can accommodate up to 8 guests in 4 staterooms and has a crew of 4-5. It is powered by twin diesel Caterpillar engines, allowing it to comfortably cruise at 16 knots with a maximum speed of 20 knots. The yacht has an impressive range of up to 850 nautical miles and features a GRP hull and superstructure with teak decks.*

## Detailed Specifications October 2023

### MAIN CHARACTERISTICS

Name: IN THE ZONE

Type: Monohull Motor Yacht

Builder: Horizon Yacht Co. LTD – Kaohsiung, Taiwan

Year: 2012

Refit Year: 2020

Hull No: #3

Yacht Model: P110 Tri-Deck Series

LOA: 110' 33.53m

LWL: 96'3" 29.34m

Beam: 23'6" 7.16m

Draft: 6'4" 1.93m

Gross Tonnage: 221 Tons

Displacement (Fully Loaded): 125 Tons

Hull Material: GRP – Composite Fiberglass

Hull Configuration: Semi-displacement

Superstructure: GRP – Composite Fiberglass

Decks: 3

Flag: Bahamas

Port of Registry: Nassau

Naval / Exterior Designer: Horizon Design Team

Interior Designer: Espinosa Yacht Design

Main Engines: 2 x Caterpillar C32 1900HP

Max Speed: 20 knots

Cruising Speed: 16 knots

Range: 850 nm @ 12kn

Guest Accommodations: 8 Guests in 4 Staterooms

Crew Accommodations: 4 Crew in 2 Staterooms

## NOTEWORTHY FEATURES AT A GLANCE

- Tri-Deck Layout for Entertaining
- Refit in 2020
- Twin Caterpillar Engines
- ABT TRAC Hydraulic Bow and Stern Thruster
- New 2020 Flybridge Hot Tub
- Hydraulic Swim Platform

## ACCOMMODATIONS

### OVERVIEW:

IN THE ZONE can accommodate 8 guests in 4 staterooms on the lower deck; a full-beam master suite aft, forward VIP stateroom and two guest staterooms, one to port and one to starboard. Each stateroom features an ensuite.

### MASTER:

The Master suite offers a luxurious design that focuses on both real and implied textures. The centerpiece of the room is the large, king-sized bed with built-in nightstands and a desk/dresser combo to port. The room also features two large, rectangular windows on each side, providing ample natural light and a beautiful view. For added privacy, the master

head includes a “his and hers” bathroom, connected by a shower room with granite floors and walls and a rain shower head.

#### VIP:

The VIP stateroom includes a centerline double berth, integrated nightstands, a built-in dresser, a full mirror closet, and large rectangular windows on each side of the room. The ensuite boasts granite floors, a shower, and a sink with plenty of room to move around. Additionally, there are multiple outlets for charging electronic devices, as well as a television and reading light for night-time enjoyment.

#### GUEST STATEROOMS:

On both port and starboard of the lower deck are two additional guest staterooms. Each room is outfitted with twin beds that can be converted into a double bed, drawers beneath the bed for storage, a moveable nightstand, and a large rectangular window. Additionally, each room is equipped with an ensuite

#### CREW:

An independent crew area is located aft of the engine room and includes two staterooms and two crew baths both ensuite. Access is from the aft deck centerline door or through a hidden staircase on the portside of the salon. There is a laundry area and crew lounge is located in the same space.

### CAPACITIES

Gross Tonnage: 221 GT ITC

Net Tonnage: 67 NT ITC

Displacement: 125 Tons

Fuel Capacity: 5,000 US Gallons 18,927 Liters

Fresh Water Capacity: 850 US Gallons 3,218 Liters

Water Makers: 1,400 GPD 5,300 LPD

Grey Water: 150 US Gallons 568 Liters

Black Water: 300 US Gallons 1135 Liters

Speed Consumption p/h Range RPM

Maximum 20 knots 200 GPH 400 NM 2300

Cruising 16 knots 130 GPH 600 NM 2000

Economical 12 knots 70 GPH 850 NM 1500

## **MAIN MACHINERY**

Main Engines: 2 x Caterpillar C32 Acert diesel engines 1,900hp each w/ ZF reduction gears

12-Cylinder, twin turbo charged, aftercooled

Engine Hours (July 2023): Port: 3029 hours

Starboard: 3022 hours

Propulsion Type: Direct Drive

Engine Controls: The main engines are controlled from the wheelhouse, the flybridge and on the port side main deck aft.

Engine Mounts: 4 x resilient rubber type

Engines exhaust system Main engine exhaust 15" Diameter with fiberglass cowling

Main engine exhaust 9" by-pass at the transom

Gear Boxes: 2 x ZF 3055A 2.52:1 Ratio

Shafting: Aqualoy 22, non-magnetic stainless-steel, 4" diameter

Propellers: 2 x ZF 5-blade, NiBrAl 45.5" x 37.5"

Engine Ventilation: Delta T

## **GENERATORS & ELECTRICITY**

Output/Electricity: 230V AC single phase @ 50Hz and 120V @ 60Hz

24V DC system

Generators: 2 x Onan/Cummins MDDCG 50kW with sound shields

Generator Hours (July 2023): Port: 7310 hours

Starboard: 7263 hours

Generator Exhaust System: Generator exhaust 4" port & stbd hull side

Shore Power: 2 x ASEA AC25TP, 21.5 kW Converters (ER above stbd engine)

2 x Glendenning cable reels with storage bins (Port & stbd steering flat)

2 x Hubbel #2 AWG 3 core cords and plugs 100A Aft

2 x Marinco sockets forward

4 x shore power connection points

4 x 100A shore power breakers

US Converters: Alerex Electronics – Input 230V 50Hz 30Amps – Output 120V 60Hz 27.3Amps. 2 x 6kVA rating

Inverters: Mastervolt Mass Combi 24 / 2600 – 60 24VDC / 2.6kVA @ 230V / 60Amp

Batteries: 10 x 225Ah AGM service batteries for ships power

4 x 225Ah engine start batteries w/ battery charger

2 x 225Ah emergency batteries w/ battery charger

Generator Start: Bridge, MSB & local

## **AUXILIARY MACHINERY**

Steering System: SeaStar Hydraulic.

3 x stations: bridge deck, flybridge and port aft deck.

Bow Thruster: ABT-TRAC 65hp hydraulic, twin blade, underway and at anchor (VIP Cabin cupboard stbd)

Stern Thruster: ABT 65hp hydraulic, twin blade (Stbd steering compartment)

Trim Tabs / Stabilizers: ABT Trac Zero-Speed

## **Fuel & Oil System**

Fuel Separator & Filtration: 2 x RACOR 79/1000MA fuel filters/water separator

Fuel Transfer Pump: Gianneschi, rated 24V, 175/40 Liters/min. (Stbd fwd ER bilge)

Fuel Filling Pump:

Furl Purifier: Reverso FPS210 S02, 24VDC (centerline fwd ER)

Lubrication Oil Pump: Groco U-Lube 24vdc pump with forward & reverse

**Firefighting & Bilge System** 7 x 24vdc, Rule 3700GPH submersible pumps with Rule-matic auto activate float switches and high-water switches

Firefighting & Bilge Pump: Gianneschi ML1100691, type ACB432, 24vdc, 1.5Kw, 230/110 L/min

### **Fresh Water System**

Fresh Water Makers: SEARECOVERY AQMC 1400/230vac, dual membrane 1400 GPD

Hot & Cold Circulation Pump: Gianneschi - (1) ML1700/77 - ECOJET 2B, 220vac, 0.55Kw, 5/32 L/min

(2) ML1300/23 - ECOJET 2B, 24VDC, 037Kw, 7/57 L/min

Expansion Tanks: (1) Varem Type Max1 Varem 30gallon, code USP6138 @ Pumps

Hot Water Tanks: 3 x 30 Gallon TORRID Electric MV-30 (30gal) 220vac, 1500watts, 6.81amps

### **Black & Grey Water System**

Black & Grey Water Treatment: 1 x 200gal tank fwd + 1 x 100gal tank aft, level monitored on the Maratronic system

WC's (toilets/bidets): 8 x TECMA Fresh water 24vdc electric flush toilets

Discharge Pumps: Gianneschi ML1400-652, Type ECO-MV44G, 24vdc

**AC & Ventilation System** A chilled water loop type air conditioning system, consisting of a central chiller plant in the ER which provides cool water to multiple fan coils installed around the yacht.

Air Conditioning: Marine Air - MCG240 SCR

4 x 5-ton / 240,000 BTU's

Air Compressor: 4 x Marine Air Chilled Water Compressors

Engine Room Ventilation: Delta T, 2 x 3hp axial blowers, intake on port & stbd main deck sides

Both fans are speed controlled and reversible using the Delta T controller on the wheelhouse and can run in automatic mode or in manual.

Galley Ventilation: Miele extraction fan above the cooking range. 5-speed, discharges to the port side of the main deck.

**Antifouling System** Micron Extra SPCBlack, YBC452 a TBT Free Antifouling coating (2022)

## **NAVIGATION & COMMUNICATION SYSTEMS**

### NAVIGATION SYSTEMS

---

Bill Stamp    Bill@stampyachtsales.com

---

1-407-466-3477



Radar: 2 x Furuno 120 mile DRS Radars 4' & 6' scanners

Monitors: 5 x Monitors: 19" NPD 1954 EGAW-H01

Gyro Compass: 2 x Ritchie compass

Auto Pilot: Furuno Navpilot

Depth, Wind, Speed: In Navnets & Furuno FI-50

GPS: 2 x Furuno Navnet and Furuno RD33

Weather Fax: Furuno WS-200

Ship's Computer: Maretron Ships Monitoring System w/ monitor in pilothouse

Chart Plotter: 2 x Furuno Navnet, 5 x Marine View monitors

Wind / Speed Log: In both GPS

Navtex: Furuno NX-300

Navigation Lights: A set of International & US approved Navigation lights are installed on the yacht for use underway and whilst at anchor and supplied power from the emergency distribution panel. They can be turned on using Maretron system or using manual switches behind the port side wheelhouse electrical panel. The following lights are fitted:

Port & stbd lights

Mast light

Stern light

Anchor light

#### COMMUNICATION SYSTEMS

VHF: 2 x ICOM VHF MC-505 & 2 x ICOM Command Mic III

Cellular Phone System: Starlink Maritime

FLYBRIDGE 2 x Furuno 1900 NavNet Multi-function Monitors

Ritchie Compass.

Autopilot Control

Bow & stern thruster control

#### DECK MACHINERY & EQUIPMENT

Anchors: 2 x Stainless-steel 110Kg anchors

Saltwater anchor-chain wash down system

Anchor Windlass System: 2 x Maxwell 45000 Vertical, Hydraulic

Deck Winches: 2 x Maxwell 3500 Aft Deck Capstans

Cranes / Davits: Hydraulic Steelhead davit SM2500

Swim Platform: Hydraulic swim platform w/ handrails around

Spotlights: 3 x Sanshin HR102 Searchlight controllers

Other: Speich Windshield wiper/wash water control

## **SAFETY, SECURITY, & FIRE FIGHTING EQUIPMENT**

Vessel Monitoring & Control: Maretron - The alarm, monitoring and control system (AMCS) consists of a main PLC and display in the wheelhouse, which is connected to various relay modules, switching modules, run indication modules, temperature and flow modules using a CanBus network.

CCTV AXIS

Cameras: 4

Fixed Firefighting System: SEAFIRE Clean Agent H-FM-200

Firefighting Equipment: 6 x 5lb dry power fire extinguishers

Smoke Detection: Yes, monitored by Maratronic system

Life rafts: 2 x Plastimo - 12 person, Next inspection 02/22/2024

2 x Emergency Grab bags

Lifejackets: PFD's: 12-Inflatable vests, 24 foam

Life Rings: Life Ring with throw line and smoke/ water light.

EPIRBs ACR 406Mhz

Flares: 6

Medical Equipment: Offshore MedAire medical equipment: First Aid, Defibrillator, O2 kit

## **ENTERTAINMENT, AUDIO/VISUAL AND IT SYSTEMS**

### **Video Equipment:**

Boat deck LG 32" TV

32" LG LED TV on aft deck in folding cabinet

Salon 55" LG LED TV on a Hi/Lo system

Galley 22" LG LCD TV

Master Stateroom 47" LG LED TV

VIP Stateroom 32" LG LED TV

Twin Stateroom 26" LG LED TV

22" LG LED TV in captain's cabin & crew galley

#### **Audio Equipment:**

Boat deck Bose Lifestyle SA-2 sound system

Bose Lifestyle SA-3 sound system on aft deck

Salon Bose Lifestyle V35 home theater system w/ iPod dock

Galley Bose Lifestyle SA-3 amplifier

Master Stateroom Bose Lifestyle V25 home theater system w/ iPod dock

VIP Stateroom Bose Lifestyle V235 home theatre system w/ iPod dock

Twin Stateroom Sony stereo system

Sony stereo system in captain's cabin & crew galley

**Underwater Lights:** 8 x white lights at stern

#### **GALLEY & LAUNDRY EQUIPMENT**

##### **GALLEY**

The "Country-Kitchen" style galley is located on the main deck, forward of the salon/dining area.

Cooking Equipment: Miele Oven

Miele 4-burner induction stove top

Refrigeration/Freezer: Samsung

Dishwasher: Miele

## PANTRIES AND OTHERS

Refrigeration/Freezer: Fisher & Paykel fridge/freezer drawer (interior dining area)

Siemens Wine Chiller (salon)

3 x Raretan Ice Maker (aft deck, flybridge deck and sun deck wet bar)

3 x Engle refrigerator (aft deck, flybridge deck and sun deck wet bar)

SubZero Ice machine (flybridge deck wet bar)

Other: Miele Espresso Station

## CREW MESS EQUIPMENT / COOKING EQUIPMENT

Cooking Equipment: Miele microwave/convection oven

Siemens 2-burner electric stovetop

Refrigeration/Freezer: Samsung refrigerator/freezer

Other: Dyson Vacuum

## LAUNDRY

Main Laundry Equipment: Miele

## OTHER EQUIPMENT

Spa Tub On flybridge

## TENDERS & TOYS

Tenders: ZAR Formenti Model ZF-1 RIB 11' w/ Suzuki 40HP engine.

Features Garmin GPS map, ICOM VHF, PFD, Nav Lights and Fusion stereo

Diving Compressor: Bauer Dive compressor with elevator swim platform

## **CAPITAL IMPROVEMENTS**

### **2023**

New exterior cushions and covers

AC has 2 new compressors

Full exterior polish

Electrical power converters refurbished

All non-skid repainted

Stabilizers refurbished in 2022 & 2023

New HP pumps for the watermaker with new membranes

Davit/Crane refurbished

New service batteries

New Victron charges/converters

### **2018 Refit at Bradford Marine**

Bottom paint + prop speed (March 2018)

Cap rail varnish, teak decks sanded, interior main deck hardwood floors refinished, salon carpet replaced (February 2018)

## **DISCLAIMER**

**NOT AVAILABLE FOR SALE OR CHARTER TO U.S RESIDENTS WHILE IN U.S. WATERS**

These particulars have been prepared by us from information provided by the sellers and are intended as a general guide to the vessel. we cannot, however, be liable for any inaccuracy. It is up to the purchaser to confirm details of concern to him by survey, inspection and/or enquiry of the seller and to ensure that the purchase contract properly reflects his concern and specific details upon which he may rely. We always advise an independent survey.





Aft Deck





Aft Deck

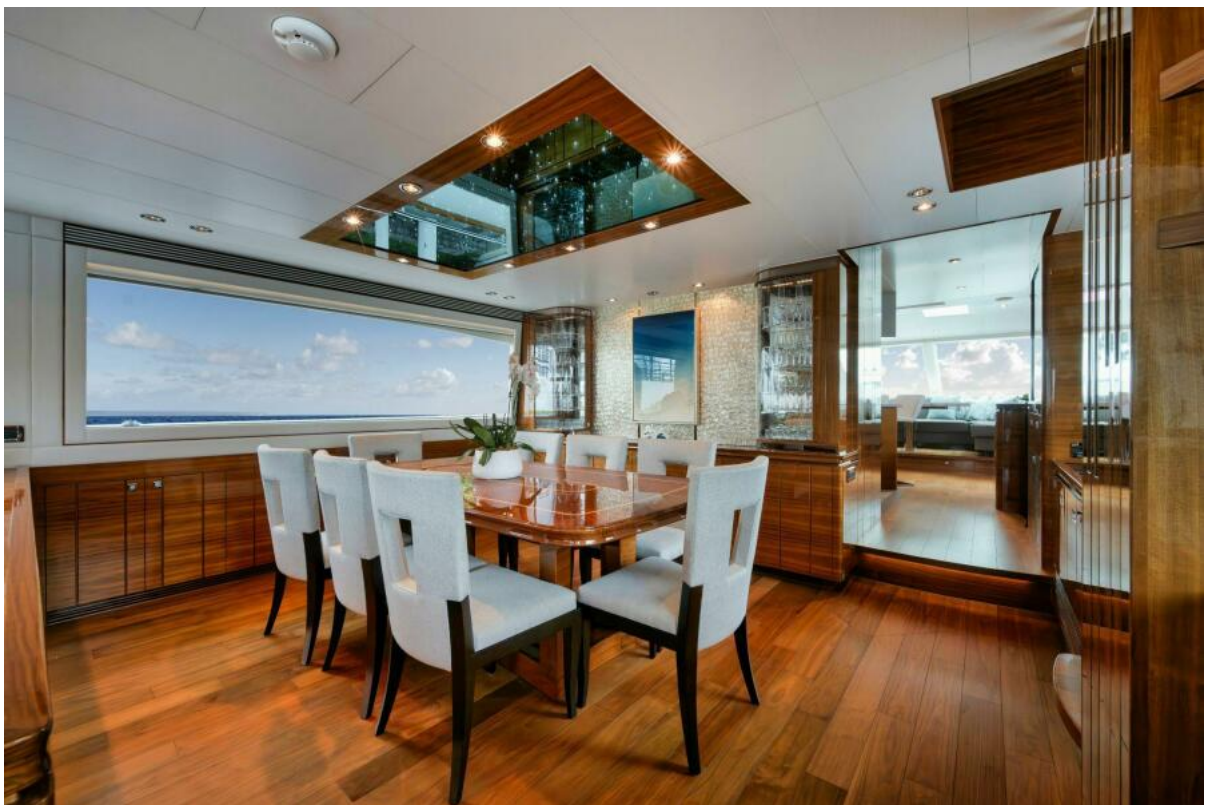


Main Salon





Main Salon

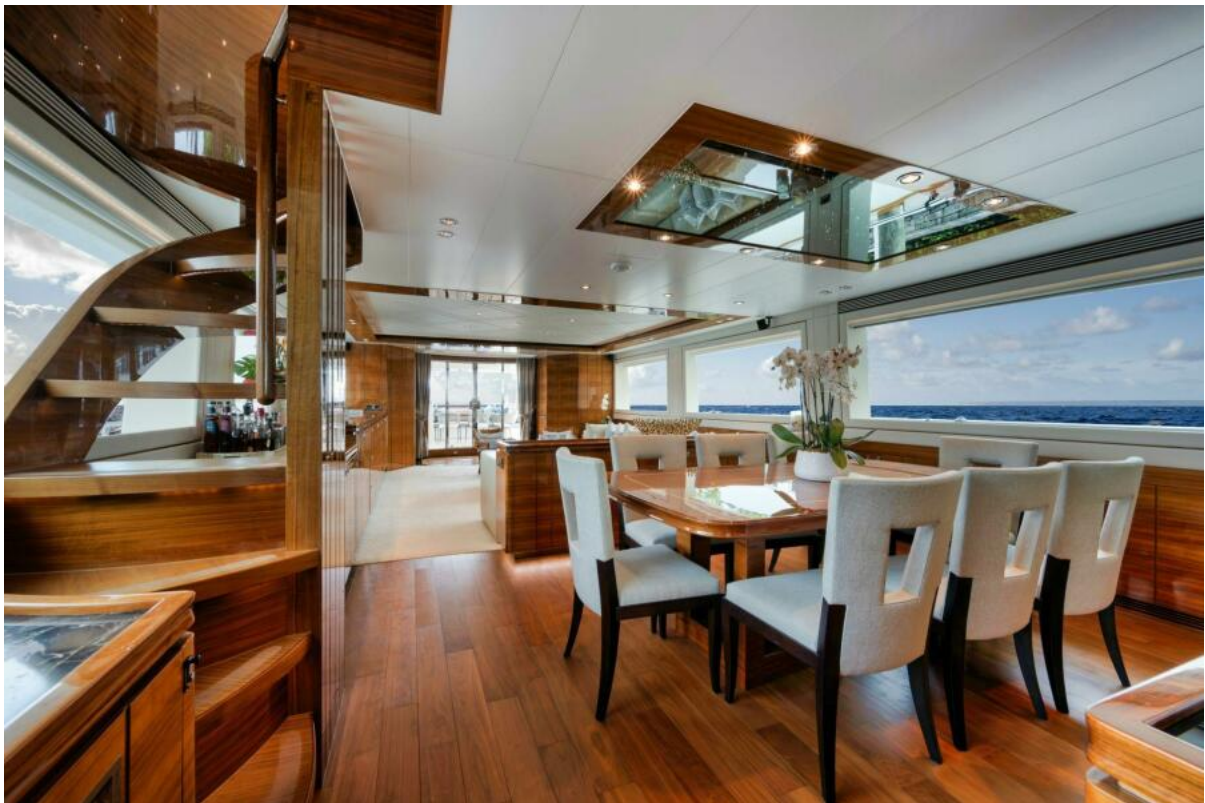


Formal Dining





Formal Dining



Formal Dining



Country Kitchen



Country Kitchen





Country Kitchen



Country Kitchen



Lower Guest Foyer



Master Suite





Master Suite



Master Ensuite



Master Ensuite



Master Ensuite





VIP Stateroom



VIP Ensuite





Stbd Guest Convertible Stateroom Guest Double



Stbd Guest Convertible Ensuite



Horizon (94) Port Guest Twin Stateroom



Port Guest Twin Ensuite





Bridge Deck Helm



Bridge Deck Helm



Bridge Deck Skylounge



Bridge Deck Skylounge





Sun Deck Flybridge



Sun Deck Flybridge



Sun Deck

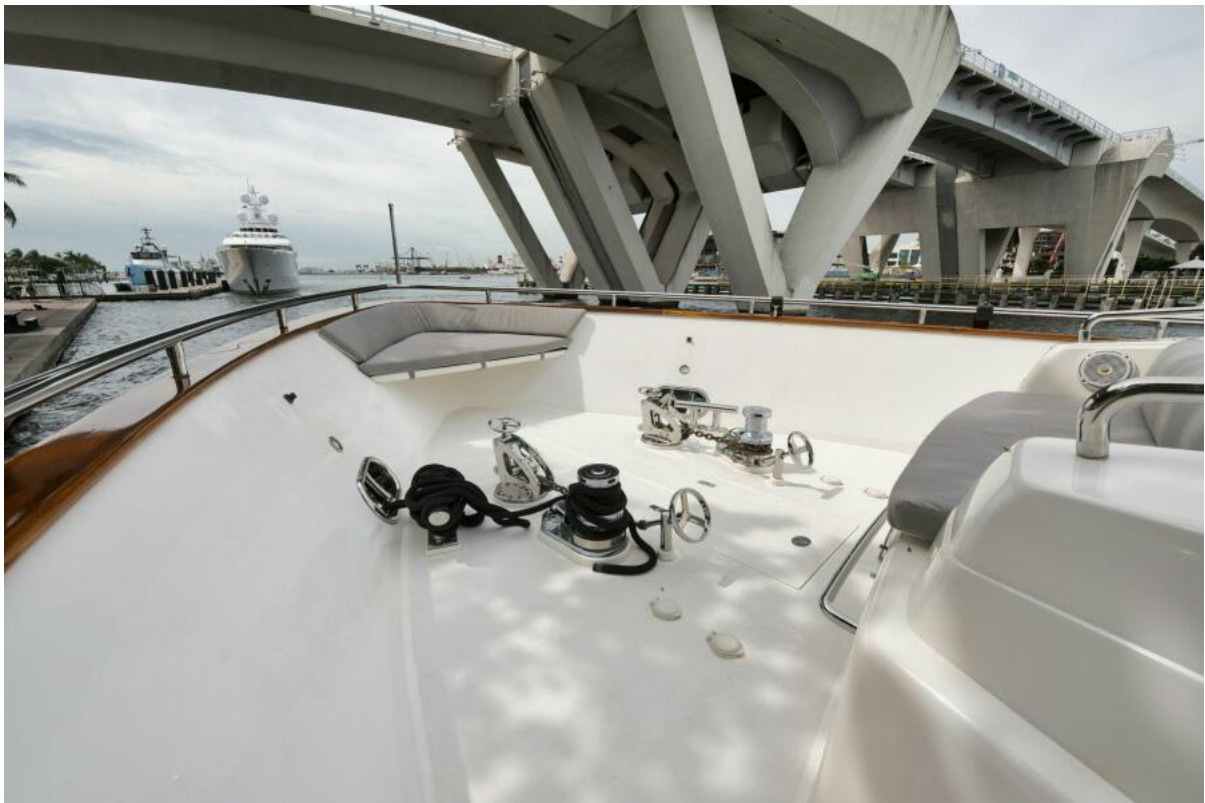


Sun Deck





Bow



Bow



Crew Mess



Crew Mess





Captain's Cabin



Captain's Head



Crew Cabin



Engine Room





Engine Room



Engine Room





Swim Platform



