



96' (29.26m) 2021 San Lorenzo SD96
Naples Florida United States



OVERVIEW

Manufacturer:	San Lorenzo		
Engines:	2 Mtu	Hull Material:	Fiberglass
Engine Model:	10V 200 M86	Cruise Speed:	Knots
Engine HP:	690	Max Speed:	Knots
Beam:	25' 0"	Cabins/Heads:	/
Max Draft:	6' 6"	Fuel Type:	Diesel
Water:	396 G (1499.02 L)	Fuel:	2730 G (10334.17 L)

\$8,300,000



Data Sheet

Category: Motor Yachts
Condition: Used
Model Year: 2021
Beam: 25' (7.62m)
Max Draft: 6' 6" (1.98m)
LOA: 96' (29.26m)

Knots
Knots
Fuel Type: Diesel
Hull Material: Fiberglass
Hull Warranty Date: 04/08/2025
Seating Capacity: 12

Fuel Tank: 2730 gal (10334.17 liters)
Fresh Water: 396 gal (1499.02 liters)
Holding Tank: 147 gal (556.46 liters)
HIN/IMO: SLZ00085G021
Stock #: 187144

Engines/Generators

Engine 1

Mtu
10V 200 M86
690HP
Fuel: Diesel
Hours: 1620

Engine 2

Mtu
10V 200 M86
690HP
Fuel: Diesel
Hours: 1620

Summary/Description

For sale

2021 San Lorenzo SD96 'Don't Tell Mom'

The SD96 is built on three decks, but thanks to the carefully studied proportions and the great balance achieved between design and volume, it is not only exceptionally elegant, but also as light and manageable as a two-deck yacht.

The interiors are warm and welcoming, yet with a modern and sophisticated overall look.

The principal living area is located on the main deck; it's function can be increased by setting up a dining table for 10 people, cleverly folded away inside a bench in front of the sofa.

We then move on to the central staircase, designed to reach the other two bridges, and is a focal and iconic point that connects all the floors and also serves to divide the areas via a metal mesh screen.

Moving on to the upper deck we find the Sky lounge, with fully opening windows that can be used as a living room, dining area, or cinema, thanks to modular furniture.

The flybridge can also be used as a lounge or outdoor dining area, thanks to the coffee table which can be converted to a dining table if desired.

The principle of flexibility returns to the lower deck where the living room can be totally transformed by closing a system of sliding panels, creating a VIP cabin with bathroom.

On the same level, there are also two guest cabins, while the owner's cabin is located on the main deck.

Much wider in width than those offered on yachts of similar sizes, the owner's cabin has large windows that create a feeling of uniformity with the surrounding environment.

Don't Tell Mom is a highly customized yacht with hand-selected details chosen by an experienced yachter.

Notable features include an extensively upgraded AV system, including a KVH HD7 SAT TV and a 4G wi-fi with hot spot.

The exterior of the yacht is complete with teak decking throughout, a sun awning for the upper deck- aft, upgraded skylounge side doors (in lieu of standard fixed glass), and a sliding bulwark starboard.

Upgraded electronics include a portable MTU control station and additional wing station with engine throttles and bow thruster.

Don't Tell Mom is located in Fort Lauderdale, Florida, November - April, and in New York City, May - October.

Certification

As-is

Disclaimer

The Company offers the details of this vessel in good faith but cannot guarantee or warrant the accuracy of this information nor warrant the condition of the vessel. A buyer should instruct his agents, or his surveyors, to investigate such details as the buyer desires validated. This vessel is offered subject to prior sale, price change, or withdrawal

without notice.

Contact Information

James Corts

MarineMax Yachts

email: james.corts@marinemax.com

direct: 239.253.2984

Included Options

OPTIONS

Electrical Appliances

Dimmer package

Additional battery charger 12V 25A for generator batteries

Qty, 19 USB sockets

Qty, 4 Additional standard sockets waterproof for exterior under GFCI for building into cabinet

Alarms and Controls

CCTV IP Panasonic: 2 fixed in cockpit, 1 pan & tilt+2 fixed in engine room. (with DVR)

Additional touch screen monitor 12" (ship monitoring system)

Electronics

Additional wing station cad. (Engine throttles and bow thruster tiller)

Portable control station MTU with one connection point (at aft cockpit)

Satellite and Communication Systems (TV SAT)

TV-sat antenna KVH HD7 (North America)

Empty dome for aesthetics to balance the SAT TV dome.

Audio and Video Appliances

Internet WI-FI System 4G with harbour spot antenna

Household Appliances (installation to be verified considering the chosen layout)

Wine cooler Gaggenau/Miele 34 bottles in port side pantry

BBQ Kenyon

Bathrooms

N#3 rain shower in owner, guest, and vip cabins

Flybridge

Sun awning for the stern area of the upper deck
Full beam canvas for sunbed in Portugues deck
Teak floor for upper deck (including full beam are for SD96)
Skylounge side doors in lieu of standard fixed side glass

Main Deck

N#4 underwater lights LED on transom
Sliding bulwark on starboard side
Teak floor in bow area including the stairs step

Thrusters and Stabilizers

Hydraulic stern thruster

Engine Room Equipment

Sewage treatment system Tecnicomar Ecomar 32S
Water maker SeaRecovery Aquamatic 900-2
Active carbon filters for grey/black water tank
Water softener SpotZero

Upgrades:

Audio and Video Appliances

Gold Audio/Video Package-diff from Silver Standard Configuration

Navigation Electronics

Garmin Diamond Package (diff from Simrad Silver Standard Configuration)
Camera for night vision FLIR (thermal vision + low light)

STANDARD FEATURES & EQUIPMENT

ELECTRICAL SYSTEM

Electrical system: 127/220V
Shore power connections: Two (2) 220V AC 100A Three-phase 60Hz
Fail-safe Galvanic Isolator for dry dock
Generators: Two (2) 55kW
Glendenning Cablemaster: One (1) CM8
4-6 mAmp GFCI installed in electrical subpanel with dedicated line for receptacles for technical room and bath
Isolation transformers (TBQ in case of FC not installed)
Double gang 110V 60Hz USA/EU sockets
One (1) 24V master switch dedicated to navigation electronics at pilothouse

Shore power inputs to be fitted with over current protector breaker (to be installed before the transformer)

ENGINE ROOM EQUIPMENT

Double fuel filters for generators

Ball valve thru-hull fittings (engine cooling exhausts remain as gate valves)

Engine oil change system with manual pump

Insulated overboard venting for dryer, in lieu of self-contained ventilation

Installation of FM200 fire system equipment (USCG approved)

AIR CONDITIONING SYSTEM

Tropicalized air conditioning system (twin chillers) with chilled water piping insulation upgrade: 288,000 BTU

Air conditioning condensation draining overboard

Chilled water pipe insulation upgrade

NAVIGATION ELECTRONICS

VHF with US channels

Additional electrical conduits between the engine room, pilothouse, flybridge helm station and hard top

AUDIO VISUAL EQUIPMENT

US Audio/Visual equipment

COMPLEMENTS FOR THE EXTERIOR

Three (3) freshwater outlets: Flybridge, aft and bow

Spotlight

Stainless steel protection around swim platform

Prop speed on shafts, propellers, intruder, bow thruster

USCG approved mast headlight (local fiberglass reinforcing, wiring and pole supplied)

COMPLEMENTS FOR THE INTERIOR

Hard latch system: Slides or positive catches on all galley/bar appliances and other drawer units

Master and VIP berths hinging up for additional under bed storage

Insulation around the hood exhaust pipe

Washing machine: Asko

Dryer: Asko

Cooktop (30"): Miele

Oven (24"): Miele

Microwave: Miele M6260

Dishwasher (24"): Miele

Ventilation fan (35"): Miele

Sink/food waste disposal: Insinkerator compact 3/4 Hp

Galley upright refrigerator/freezer: Qty.2 (two) Miele KFNS 37432 iD built-in fridge/freezer (no ice maker)

Salon bar: refrigerator Frigonautica 80

Salon ice maker: Indel Webasto, clear-cube

Flybridge refrigerator: Frigonautica 60



















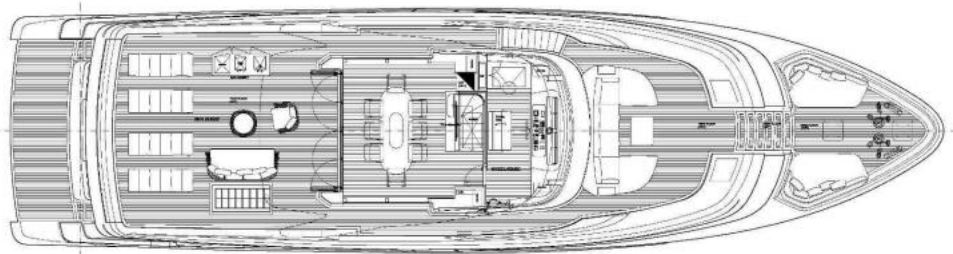


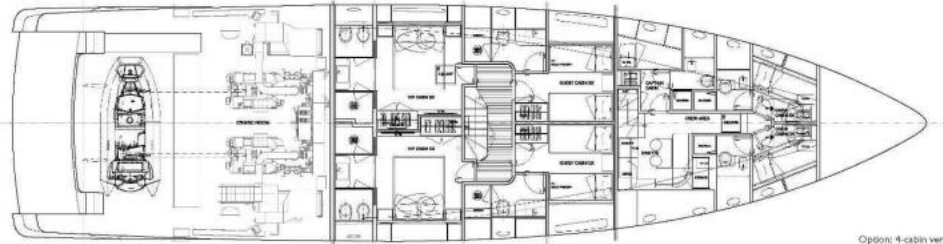
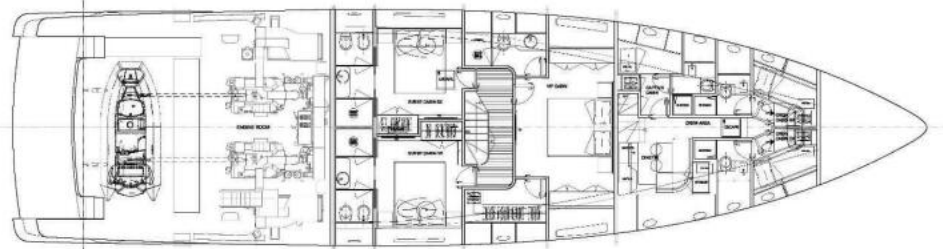
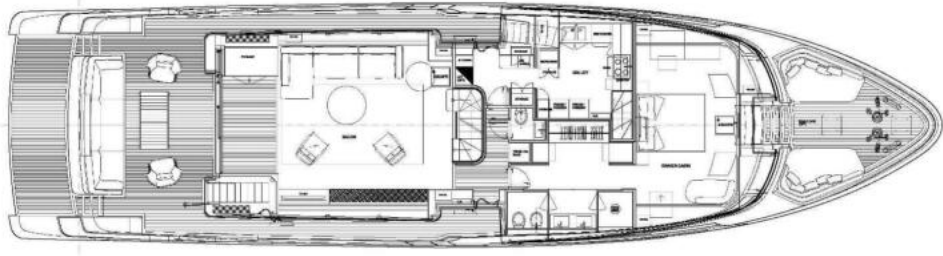












Option: 4-cabin version