



# LAUREL

240' (73.15m) 2006 Delta  
Palm Beach Florida United States



## OVERVIEW

Manufacturer: *Delta*

Engines: 2 Caterpillar

Engine Model: 3516B

Engine HP: 2500

Beam: 40' 2"

Max Draft: 12' 0"

Water: 11000 G (41639.51 L)

Hull Material: Steel

Cruise Speed: 13 Knots

Max Speed: 18.2 Knots

Cabins/Heads: 7 / 13

Fuel Type: Diesel

Fuel: 45783 G (173307.43 L)

**\$69,500,000**



## Data Sheet

Category: Superyacht  
 Condition: Used  
 Model Year: 2006  
 Refit Year: 2014  
 Beam: 40'2" (12.24m)  
 Max Draft: 12' (3.66m)  
 LOA: 240' (73.15m)  
 Cabins: 7  
 Sleeps: 17  
 Single Berths: 2  
 Twin Berths: 1  
 Queen Berths: 2  
 King Berths: 5  
 Full Beam Master: Yes  
 On Deck Master: Yes  
 Heads: 13

Captain's Quarters: Yes  
 Crew Sleeps: 24  
 Elevator: Yes  
 Maximum Speed: 18.2 Knots  
 Cruise Speed: 13 Knots  
 Range NM: 6000  
 Fuel Type: Diesel  
 Super Structure Material: GRP  
 Hull Material: Steel  
 Air Conditioning: Yes  
 Max Passengers: 12

Gross Tonnage: 1595  
 Stabilizers: Zero Speed  
 Stabilizer Brand: Quantum  
 Bow Thruster: Yes  
 Stern Thruster: Yes  
 Fuel Tank: 45783 gal (173307.43 liters)  
 Fresh Water: 11000 gal (41639.51 liters)  
 Classification: Lloyd's  
 MCA Certified: Yes  
 Builder: Delta  
 Interior Designer: Donald Starkey  
 HIN/IMO: 1008384

## Engines/Generators

### Engine 1

Caterpillar  
 3516B  
 Inboard  
 2500HP  
 Fuel: Diesel  
 Hours: 21499  
 Hours Date: 01-25-2023  
 Location: Port

### Engine 2

Caterpillar  
 3516B  
 Inboard  
 2500HP  
 Fuel: Diesel  
 Hours: 21499  
 Hours Date: 01-25-2023  
 Location: Starboard

### Generator 1

Caterpillar  
 C9  
 460KW  
 1800.00RPM  
 Hours: 21045  
 Hours Date: 01/25/2023

### Generator 2

Caterpillar  
 C9  
 460KW  
 1800.00RPM  
 Hours: 21784  
 Hours Date: 01/25/2023

### Generator 3

Caterpillar  
 C9  
 460KW  
 1800.00RPM  
 Hours: 21965  
 Hours Date: 01/25/2023

### Generator 4

Cummins  
 6CTAS  
 130KW  
 Hours: 208  
 Hours Date: 01/25/2023

## Summary/Description

World Renowned LAUREL 240'/73.15m Delta 2006/2014 - A TOP pedigree vessel from Delta Marine, the most iconic of all US yachts.

**World Renowned LAUREL 240'/73.15m Delta 2006/2014**

**A TOP Pedigree Vessel from Delta Marine, the Most Iconic of all US Yachts.**

Key Features:

- World Ocean Cruiser, 7,000 Mile Range
- Steel Hull with Fiberglass Superstructure
- 2023 - Fresh Hull Paint, New Teak on the Foredeck, Interior upgrades
- Touch & Go Helipad
- On Deck Master Suite with Private Balconies and Office
- Stunning Deck Space
- 6 Lavish Staterooms; 4 King Ensuites, 1 Queen Ensuite
- BONUS! 7th Stateroom can be Massage/Spa room, Double or Twin Stateroom
- Wheelchair Access
- Elevator to all Five Decks
- Jacuzzi on Sundeck with Wide Range Scenic Views
- Private Gym with Enclosed Glass Shower
- Beach Club with Shade Features; Perfect for Watersports or Even Al Fresco Dining
- Incredible Charter Program & Layout
- Twin Caterpillar Engines; 3516B HD at 2,500 HP
- Four Quantum Zero Speed Stabilizers
- Lloyd's Class, UMS & LMC Classifications
- MCA, LYC, ISM Compliant

## LAUREL 240'/73.15m Delta 2006/2014 Description

**World Renowned LAUREL 240'/73.15m Delta 2006/2014**

**A TOP Pedigree Vessel from Delta Marine, the Most Iconic of all US Yachts.**

Key Features:

- World Ocean Cruiser, 7,000 Mile Range
- Steel Hull with Fiberglass Superstructure
- 2023 - Fresh Hull Paint, New Teak on the Foredeck, Interior upgrades
- Touch & Go Helipad

- On Deck Master Suite with Private Balconies and Office
- Stunning Deck Space
- 6 Lavish Staterooms; 4 King Ensuites, 1 Queen Ensuite
- BONUS! 7th Stateroom can be Massage/Spa room, Double or Twin Stateroom
- Wheelchair Access
- Elevator to all Five Decks
- Jacuzzi on Sundeck with Wide Range Scenic Views
- Private Gym with Enclosed Glass Shower
- Beach Club with Shade Features; Perfect for Watersports or Even Al Fresco Dining
- Incredible Charter Program & Layout
- Twin Caterpillar Engines; 3516B HD at 2,500 HP
- Four Quantum Zero Speed Stabilizers
- Lloyd's Class, UMS & LMC Classifications
- MCA, LYC, ISM Compliant

LAUREL is a proven prestigious world traveler and one of the most iconic mega yachts in the world. With one glance, you can tell the quality and the classic luxury LAUREL maintains. LAUREL offers her 12 guests an unbeatable experience while cruising. A popular charter vessel that will undoubtedly catch the attention of any savvy Owner, LAUREL is a fantastic investment opportunity. With her bright blue hull and classic lines, she is the epitome of elegance.

LAUREL's clever layout offers both intimate social spaces and expansive deck spaces perfect for entertaining. Her interior design introducing exotic woods, glass, large windows, and big volume with a 40' beam sets LAUREL apart. Not to mention her crowning features: a spa pool, gymnasium, enormous beach club, and 7 staterooms.

LAUREL is particularly well-suited to families and features a child-friendly set-up and countless toys to keep them entertained while on board. Guests will enjoy seamless access to the water with her enormous beach club and can travel between all decks via her elevator.

The flexible cabin arrangement offers a range of options for guests. In addition to the on-deck master suite, LAUREL has four identical king cabins, a queen with a single and pullman, and an optional seventh cabin that is equipped with Murphy beds and/or massage table. The full beam owner's suite offers two private balconies, a service alcove, a lounge, a study and his and hers ensuite bathrooms – a true oasis on board.

There are several generous social areas to enjoy on board LAUREL. The library and media room can host movie nights or



intimate cocktail evenings. For al fresco entertaining, she benefits from two generous dining areas on the aft deck and bridge deck, while her sun deck offers loungers and a jacuzzi to enjoy throughout the day. Her sky lounge also acts as a second salon for air-conditioned comfort with a view.

## **MAIN DECK**

### **Main Salon**

A wide ranging salon with a classic club design, glossy burlwood and large windows provide ever changing views of your destination. Oversized settees and classic upholstered chairs make this a perfect spot for aperitifs and conversation. The large TV screen is concealed by artwork which can be ready for viewing with a touch of a button.

### **Formal Dining Salon**

The formal dining salon is located forward of the Main Salon of which can be closed off for intimate dinners. Up to sixteen guests can be seated at the high gloss bond wood table and leaves may be removed for more modest parties. Custom storage for all linens, China and crystal allows guests to enjoy an array of presentations throughout their stay onboard.

### **Master Office & Ensuite**

Enter the main deck master suite by beginning in the private Owner's office. This allows the Owner to be efficient with business in the outside world while underway. Private balconies on port and starboard side are ideal for your morning coffee or night cap.

The sleeping and sitting area of the Master Suite has a warmth to her with rich fabrics complementing the natural wood textures and finishes; and is highly spacious. The entertainment system can be hidden when not in use.

The Master ensuite is finished in antique travertine and gold leaf with his and her sinks and mirrors; a separate toilet room and double shower room.

## **BRIDGE DECK**

LAUREL's bridge deck has an informal atmosphere and fantastic views. The aft deck has ample seating for relaxation and fun in the sun. Under the fixed cover is a large shaded area for dining and conversation. The aft deck dining table easily accommodates 16 guests. Under the fixed cover is a large shaded area for dining and conversation. Step through the double doors to the sky lounge, a favorite spot for breakfast. A separate library and media room is a cozy spot for reading, games or watching movies.

## **SUN DECK**

LAUREL's versatile top deck is outfitted for outdoor and indoor fun. Large sunpads and chaise lounges are located aft on

the deck. Just forward is the Jacuzzi. An enclosed glass shower is perfect for cooling down after a workout in the well-equipped gym located in the center of the sun deck. The observation lounge forward can be used as a sitting room with card table or as a beautiful setting for an intimate dinner. The lounge area with wet bar forward is protected by removable sun sails.

## LOWER DECK

Six guest cabins are located on the lower deck and offer a variety of configurations depending on guest requirements. The four king suites have bathrooms with twin sinks and showers en suite, writing desk and arm chairs. The two queen suites each have bathtubs and twin sinks. One is easy to set up as a children's room with a single bed + pullman bed in addition to the queen. The 7th stateroom can serve as a massage / spa room (upon request) or as a staff/security room with a Murphy style Queen size bed and/or Twin bed inclusive of ensuite head with Jacuzzi tub/shower and double sinks.

## ENGINE ROOM

LAUREL was built expressly for traveling the world in safety and comfort. The engine room is amazingly clean, efficient and set up for consistent maintenance. Ship systems are robust and designed for reliability of performance. Tenders and toys are safely secured in garages, leaving deck spaces uncluttered and available for guest use at all times. Guests can enjoy a sea-faring adventure with complete confidence.

## LAUREL 240'/73.15m Delta 2006/2014 Specs

### MACHINERY

#### Engines & Generators:

Engines: 2 x Caterpillar 3516B, 2500hp @ 1650 rpm - (November 2023)

- Port: 3,911 SMOH, Total 22,708
- Starboard: 3,898 SMOH, Total 22,708

Major Overhaul completed November 2019 as part of Class Requirement

Generators: 3 x Caterpillar C9, 460V/ 250 kW @1800 RPM (November 2023)

- Port: 2,280 SMOH, Total 21,930
- Mid: 7,738 SMOH, Total 22,685
- Starboard: 6,285 SMOH, Total 22,646

Fuel Consumption; RPM/Gallons Per Engine

- 1000/30
- 1100/40
- 1200/50
- 1300/60
- 1450/90

Fuel Consumption: 20 GPH (Average for the Day)

Emergency Generators: Cummins 6CTAS 130 kW, 460Vac, 60Hz

- 208 hours

## **SHORE POWER**

Magnus 1B-100-101

- Input: 3PH-E 180-5
- 20Vac, 2x250A, 47-64Hz
- Output: 3PH-E 460Vac, 376A, 60Hz @ 1pm (July 2020)

## **STABILIZERS / THRUSTERS / WATERMAKER**

Quantum QC1800 - x4 Fin, Zero Speed

Bow Thruster - Jastram BU40F, 250kW

Stern Thruster - Jastram W20 Azimuth, 150 kW

Watermaker - x2 HEM 4800, Reverse Osmosis, 18,000 LPD each

## **AV EQUIPMENT**

AV - Crestron; Upgrade Completed 2015 IT - VSAT; x2 Intellian V130NX (New 2020)

Sat TV

- LED HDTV's throughout
- Central Apple TV
- Apple Airplay
- Xbox 360
- Kaleidescape movie library
- Cinema Room Conversion from Library Room.
- Frankentak Security Camera/ Monitoring System with Night Vision 1200 Point Alarm and Monitoring System

## DECK FACILITIES

Windlass

- x2 Muir VRC20000/307, Capstan
- x4 Muir VC13000

MOB Crane - Nautical Structures EZ3000 Passerelle - Nautical Structures 13847

Tender Garage Davit Cranes

- Ascon, Foremast Telescopic
- Ascon, Hydraulic Hull Openings - Navalimpianti

Nautica RIB 15 Yamaha T60TLR 122hrs

Nautica RIB 22 WB Yamaha VF 250XA New 2018 558 hrs Nautica RIB 25 MerCruiser Bravo

x2 Stern Drive New

2017 Yanmar 6LPTA-STP2R 176 hrs (New 2020)

Jetskis - x2 Yamaha EX105AX 26hrs/27hrs (New 2021)

## SECURITY & SAFETY EQUIPMENT

Security - Frankentek, Hirsch, Panasonic

Fire Detection - Notifier AFP-200

Fire Protection - Marioff Hi-Fog Water Mist System Fire Doors - DSG

Watertight Doors - Tebul

## GALLEY & LAUNDRY EQUIPMENT

Crew Galley

- Oven - x2 MKN EKECOD610T0005 Cooktop - x3 Vulcan EV12
- Refrigerator - Cospolich R40-2M-SM-MLR Freezer - Cospolich F20-2M ADSM-MLR Dishwasher - Hobart FPA-SEF
- Ice Maker - Manitowoc QM30A

Guest Galley

- Oven - x2 MKN EKECOD610T0005, Cooktop x3 Vulcan EV12
- Refrigerator - Cospolich R41-2M-SM-MLR Freezer - Cospolich R13F172M ADSM-MLR Dishwasher - Hobart FPA-SEF

- Ice Maker – Manitowoc QM30A

#### Laundry

- Washers – x3 Miele WSF100S0 10Kg Miele WSFD71LP 7.5Kg
- Miele WSE 5425 5Kg
- Dryers
- x3 Miele T6251EL 10 Kg
- Miele T6185 7.5Kg
- Roller Iron – Miele HM2110050 Dryer Cupboard – Electrolux TS460

#### **GUEST ACCOMMODATIONS:**

##### Stateroom Configurations:

1. Master Stateroom: Main Deck, King Bed, His/Hers Bath
2. King, Ensuite Shower - Twin Sinks
3. King, Ensuite Shower - Twin Sinks
4. King, Ensuite Shower - Twin Sinks
5. King, Ensuite Shower - Twin sinks
6. Queen + Single Bed + Pullman, Ensuite Shower/Jacuzzi Bath - Twin Sinks
7. Massage Room / Queen Murphy Bed + Twin Murphy Bed, Ensuite Shower/Jacuzzi Bath - Twin Sink

#### **GYM EQUIPMENT**

##### TechnoGym Equipment:

- Stationary bike
- Elliptical
- Treadmill
- Weight Machine
- Weight Bench
- Free Weights

#### **Mechanical Disclaimer**

Engine and generator hours are as of the date of the original listing and are a representation of what the listing broker is told by the owner and/or actual reading of the engine hour meters. The broker cannot guarantee the true hours. It is the responsibility of the purchaser and/or his agent to verify engine hours, warranties implied or otherwise and major overhauls as well as all other representations noted on the listing brochure.



## Disclaimer

The company offers the details of this vessel in good faith but cannot guarantee or warrant the accuracy of this information nor warrant the condition of the vessel. A buyer should instruct his agents, or his surveyors, to investigate such details as the buyer desires validated. This vessel is offered subject to prior sale, price change or withdrawal without notice.



LAUREL 240'73.15m Delta 2006/2014 LAUREL 240'73.15m Delta 2006/2014



LAUREL 240'73.15m Delta 2006/2014 LAUREL 240'73.15m Delta 2006/2014





LAUREL 240'73.15m Delta 2006/2014 LAUREL 240'73.15m Delta 2006/2014



LAUREL 240'73.15m Delta 2006/2014 LAUREL 240'73.15m Delta 2006/2014



LAUREL 240'73.15m Delta 2006/2014 Sun Deck, Forward



LAUREL 240'/73.15m Delta 2006/2014 Sun Deck, Forward





LAUREL 240'/73.15m Delta 2006/2014 Observation Room, Sun Deck Forward



LAUREL 240'/73.15m Delta 2006/2014 Jacuzzi





LAUREL 240'/73.15m Delta 2006/2014 Bridge Aft Seating



LAUREL 240'/73.15m Delta 2006/2014 Bridge Aft Seating





LAUREL 240'/73.15m Delta 2006/2014 Bridge Aft Dining



LAUREL 240'/73.15m Delta 2006/2014 Bridge Aft Dining



LAUREL 240'/73.15m Delta 2006/2014 Sky Lounge



LAUREL 240'/73.15m Delta 2006/2014 Sky Lounge





LAUREL 240'/73.15m Delta 2006/2014 Sky Lounge



LAUREL 240'/73.15m Delta 2006/2014 Sky Lounge





LAUREL 240'/73.15m Delta 2006/2014 Library



LAUREL 240'/73.15m Delta 2006/2014 Library



LAUREL 240'73.15m Delta 2006/2014 Main Staircase





LAUREL 240'/73.15m Delta 2006/2014 Main Aft Deck



LAUREL 240'/73.15m Delta 2006/2014 Main Aft Deck





LAUREL 240'/73.15m Delta 2006/2014 Main Salon



LAUREL 240'/73.15m Delta 2006/2014 Main Salon





LAUREL 240'73.15m Delta 2006/2014 Main Salon



LAUREL 240'73.15m Delta 2006/2014 Main Salon Dining





LAUREL 240'/73.15m Delta 2006/2014 Private Master Office



LAUREL 240'/73.15m Delta 2006/2014 Master Stateroom



LAUREL 240'73.15m Delta 2006/2014 Master Stateroom



LAUREL 240'73.15m Delta 2006/2014 Master Stateroom





LAUREL 240'/73.15m Delta 2006/2014 Private Master Balcony



LAUREL 240'/73.15m Delta 2006/2014 View from Balcony looking into the Master





LAUREL 240'/73.15m Delta 2006/2014 Master Ensuite



LAUREL 240'/73.15m Delta 2006/2014 VIP Stateroom





LAUREL 240'/73.15m Delta 2006/2014 Guest Stateroom



LAUREL 240'/73.15m Delta 2006/2014 Guest Stateroom





LAUREL 240'/73.15m Delta 2006/2014 Twin Stateroom



LAUREL 240'/73.15m Delta 2006/2014 7th Stateroom/Massage Room



LAUREL 240'/73.15m Delta 2006/2014 Private Gym





LAUREL 240'/73.15m Delta 2006/2014 Beach Club

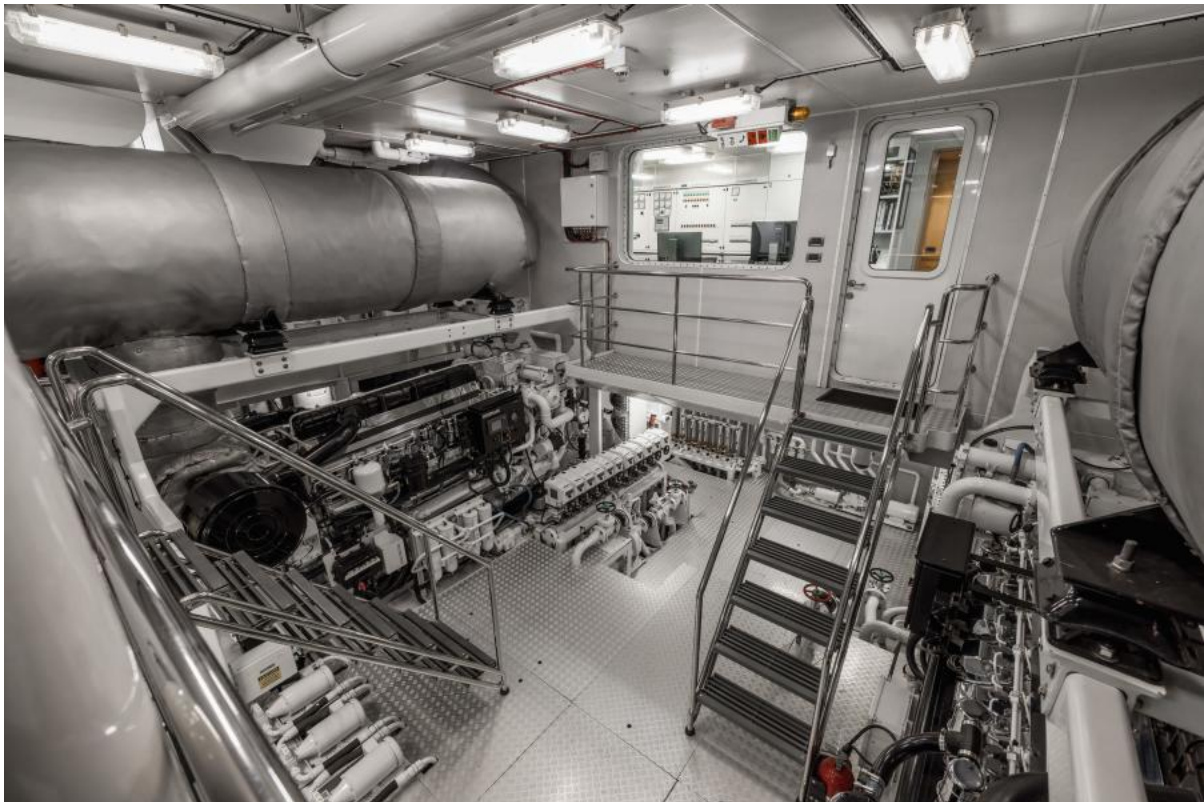


LAUREL 240'73.15m Delta 2006/2014



LAUREL 240'73.15m Delta 2006/2014 Tender Bay



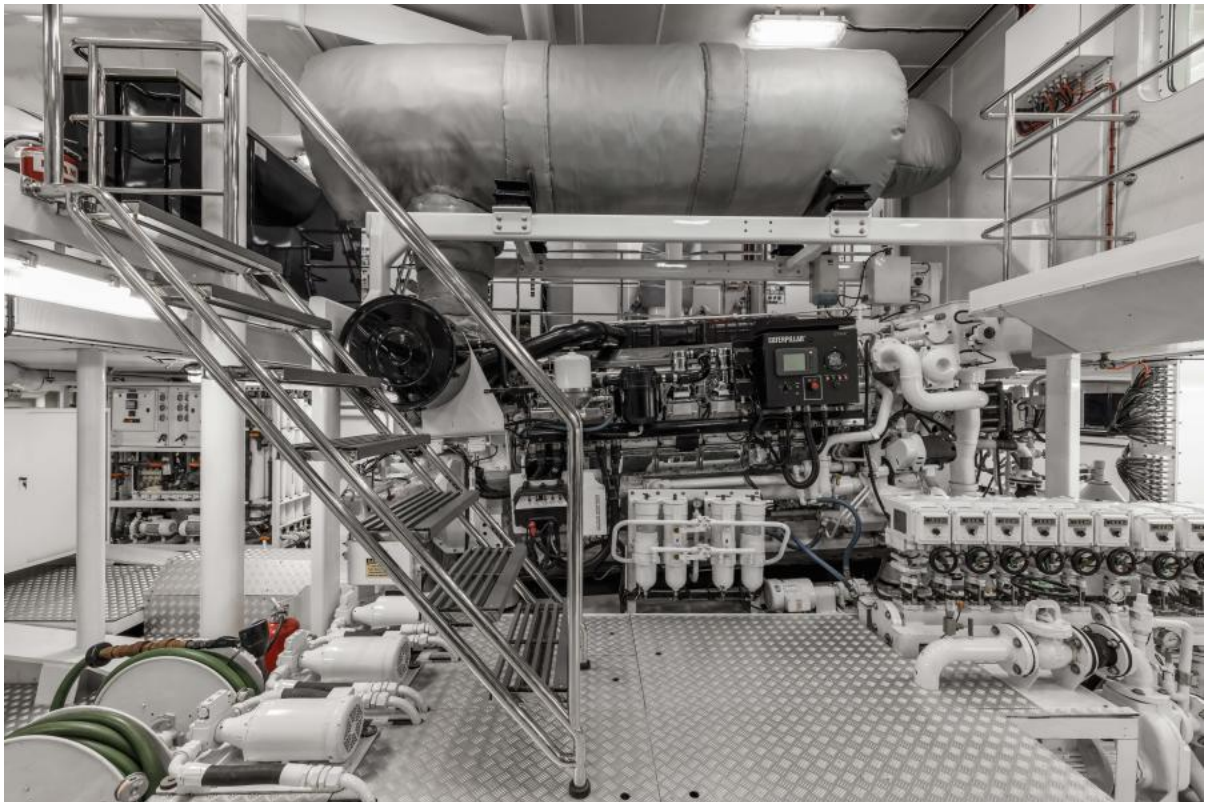


LAUREL 240'73.15m Delta 2006/2014 Engine Room



LAUREL 240'73.15m Delta 2006/2014 Engine Room





LAUREL 240'73.15m Delta 2006/2014 Engine Room



LAUREL 240'73.15m Delta 2006/2014 Engine Room





LAUREL 240' / 73.15m Delta 2006/2014 Engine Room



LAUREL 240' / 73.15m Delta 2006/2014 Engineer Office





LAUREL 240'/73.15m Delta 2006/2014 Engine Room



LAUREL 240'/73.15m Delta 2006/2014 Engine Room