



74' (22.56m) 2007 Viking 74 Enclosed Bridge  
Florida United States



## OVERVIEW

**\$1,750,000**

Manufacturer: *Viking*

Engines:	1 MTU	Hull Material:	Fiberglass
Engine Model:	16V2000M93	Cruise Speed:	28
Engine HP:	2400	Max Speed:	38
Beam:	19' 9"	Cabins/Heads:	5 / 5
Max Draft:	6' 0"	Fuel Type:	Diesel
Water:	385 G (1457.38 L)	Fuel:	3000 G (11356.23 L)



## Data Sheet

Category: Sport Fishing  
Subcategory: Flybridge  
Condition: Used  
Model Year: 2007  
Beam: 19'9" (6.02m)  
Max Draft: 6' (1.83m)  
LOA: 74' (22.56m)  
Cabins: 5  
Double Berths: 2  
Queen Berths: 1  
King Berths: 1  
Heads: 5

Crew Cabins: 1  
Crew Sleeps: 2  
Maximum Speed: 38 Cruise Speed: 28  
Fuel Type: Diesel  
Hull Material: Fiberglass  
Special Offer: Yes

Displacement: 107106 Fuel Tank: 3000  
gal (11356.23 liters)  
Fresh Water: 385 gal (1457.38 liters)  
Holding Tank: 250 gal (946.35 liters)

## Engines/Generators

### Engine 1

MTU  
16V2000M93  
2400HP  
Fuel: Diesel  
Hours: 4600  
Year: 2007

## Summary/Description

MAKE AN OFFER! PRICE REDUCED! LOWEST 74 ON THE MARKET! WILL CONSIDER TRADES! We bought the boat last year with very little use! This 74' Viking is upgraded (OVER \$200k), serviced and ready to run! MTUs (Upgraded 2400hp M93s) 4000 Hour service by RPM diesel April 2019. Both Generators fully service

### 2019 New Upgrades May-September

- NEW Raw Water Pumps
- NEW Sea Recovery Watermaker
- NEW Electronics (Garmins throughout added)
- NEW FLIR Thermal Camera
- NEW A/C Handler
- NEW A/C Ducts Run throughout boat
- NEW Chilled Water Evap.
- NEW Condensing Unit
- NEW A/C Membranes
- NEW Zincs
- NEW Hull Wrap
- NEW All Outside Cushions Reupholstered
- NEW TV's in Salon and Master Stateroom
- NEW Appliances (Trash Compactor, Washer/Dryer, Dishwasher)

### 2019 Services May-September

- SERVICED Chiller system serviced
- SERVICED A/C Completely Serviced
- SERVICED Fuel Tank Flush and Polish
- SERVICED Generators Fully Serviced (Pumps, gaskets, clamps, hoses ect)
- SERVICED Engine injectors, replaced racors
- SERVICED Satellite TV
- SERVICED Eskimo Ice Machine
- SERVICED New bottom paint and prop speed

### Accommodations

Sleeps up to (10) in (5) staterooms (1) of the (5) staterooms has engine room access and can be designated for crew.

#### Salon:

The molded fiberglass Salon door with large window and teak finish automatically slides open and has a key lock. Custom Antico flooring lays elegantly at salon entrance. The rest of the salon has wall-to-wall carpeting with lead lined padding for sound absorption, a canvas carpet runner, and teak trim where Amtico Noor meets carpet. Fixed frameless side windows with tinted tempered glass are accented with Custom embroidered fabric & Teak valances and Hunter Douglas silhouette blinds. Behind the valances lay indirect decorative rope lighting behind valances. Overhead Xenon lights are recessed with dimmer switches. The salon has a teak aft bulkhead and teak cabinetry with drawers and bottle storage. The large L-shaped sofa with underneath storage for rods hugs a Satin Teak hi/low cocktail table and faces a

Pop-up LED TV. Facing the spacious galley countertops sit counterweighted movable bar stools in front of the Teak-stepped spiral staircase to the Flybridge. The Salon Day Head is lined with Attic flooring, Custom Alligator skin wallpaper, and a mirrored backsplash over the vanity with a granite countertop and satin Grohe fixtures. Behind the Head Hunter elongated head is a Teak cabinet with access to a large brow storage room with an electric panel and central vacuum system.

#### Galley and Laundry:

The Galley features custom Amtico teak & holly flooring, Granite counter tops with a 6" overhang for bar stool area, and a custom granite galley island with (2) custom release bar stools, all accented with a mirrored backsplash and dimmers on the overhead halogen lights. Functionally there are double stainless steel sinks under the counter mount with a satin Grohe faucet. The Galley boasts ample storage between the refrigeration and freezers, the (2) Teak faced cabinets with long pullout drawers for food storage, large cabinetry under the cooktop for storage, and the pullout dinnerware storage. Across from the Galley is the Dinette with booth-style seating hugging a teak table with satin finish and a single thru-bolted pedestal. The cushions are removable offering additional storage underneath. There is a teak divider between the Dinette and Salon and the Companionway entrance is located behind the Dinette down the teak stairwell with carpeted teak steps and a teak handrail. Through the Companionway, the walls are padded with teak accents and the floors are carpeted with canvas covering runners. The overhead Xenon lights are recessed in headliner. There is storage throughout the Companionway. The Companionway has access to another electric panel, the water tank level gauge and pump indicator located in the sub-panel, bilge areas with awl grip access hatches, the central vacuum unit connection with accessories, and the Laundry Center with NEW Miele stackable washer and dryer behind a teak door.

#### **Bow Thruster**

- Hydraulic Sidepower Bow Thruster

#### **Cockpit**

- Boarding box, fiberglass with nonskid, lift up top and storage
- Cable TV and telephone connections in cabinet under starboard gunwale
- Phone cable is CAT-5 to accommodate data phone systems
- Dockside electric connection in port and starboard cabinets
- Dockside water connection with pressure reducing valve
- Electric sliding salon door
- Engine room access hatch and door lock
- Custom teak mezzanine with starboard aft facing lounge seating with covered cushions
- Hinged seats with storage under lounge area
- Tackle cabinet with pullout drawers and large bait freezers
- New C-Worthy mezzanine seating with fabric and armrests
- Fresh water wash-down with hose bib
- 2x 12V outlets forward under coaming on each side
- Offset pedestal fighting chair (Release Marine)
- Reinforced stainless steel cleats
- GaP storage in starboard side
- Electrical inlet box
- Self-bailing cockpit with large scuppers
- Side lockers
- Cockpit misters



- Recessed refrigerate chill box under-mounted in mezzanine step
- Gasket for all lids, doors and access doors
- Grab rails at cockpit haunch
- Ladder to flybridge with plastic treads
- "T" in dockside water inlet to fill water tank
- Transom door
- Transom swim steps
- Teak deck and mezzanine
- Lazarette access
- Custom electric grill in tackle center
- Y-valve for fresh & salt water wash-downs
- Eskimo ice machine with discharge in cockpit sole
- Livewell in cockpit box
- Saltwater supply & fitting with standard A/C pump for on-deck livewell
- Stainless steel and flush mounted rod holders
- Indirect lighting
- Additional hose bib to make R/O water out of dock water
- Dual thermostat for cockpit freezer
- Stainless steel gas springs for fish box, as well as sole port and starboard boxes
- Additional cable master
- Fish box macerator
- Lazarette hatch with access to steering, trim tabs and drain pumps
- Circulation blowers in launch
- Hydraulic outrigger with cameras
- Outriggers mounted on flybridge
- Upgraded 1000 GPH for transom livewell

### **Crew Quarters (5th Stateroom)**

The Crew's Stateroom comes fitted with upper and lower berths with upgraded orthopedic mattresses dressed in custom fabrics and a large upper bunk with a teak sea rail. There are (3) mirrored storage cabinets above top bunk and below. The stateroom has custom wallpaper and Amtico teak flooring with a watertight access door to the engine room. For additional storage, there is a Teak nightstand with (3) drawers and a hanging overhead lighting. Entering the en suite head, there is custom wallpaper, a mirrored backsplash with a Granite vanity countertop, overhead lighting, a mirrored ceiling, Amtico teak and Holly Nooring, a Magnum Opus head, a stall shower with seating, and silver Grove Mixtures for the faucet, shower, towel bars and rings. Head is equipped with 110V outlet.

### **Custom Tower**

- Custom Built by Palm Beach Towers
- Tuna tower
- Center ladder
- Molded standing platform
- (2) Quartz lights molded with stainless bezel aft and (2) fwd
- Tower sunshade
- Pod style
- KEP 12" monitor
- MTV Digital engine displays
- Control box helm pod with recessed electronics boxes
- Polycarbonate enclosure
- Ritchie compass

- RD030 Furuno
- Bow thruster control
- Furuno NavPilot
- Remote teaser reel controls
- Custom seating
- Single lever controls

### **Deck and Hull Equipment**

- Anchor Windlass System: Lewmar RC 2500 Hydraulic
- Anchors: Fortress
- Anchor Chain: 250 feet of rope & 30 feet of chain-link

### **Enclosed Bridge**

- Single Stidd ultra leather helm chair
- Spiral teak staircase
- Aft control station
- L-shaped ultra leather seating with storage underneath
- Teak cocktail table
- Overhead lighting
- Subzero refrigerator/freezer
- 20" Sharp Nat screen TV
- Bomar hatch
- Port and starboard bench seating at helm
- HP Photosmart printer/fax machine
- (4) Sony DVR engine room/cockpit camera recorders
- Digital controlled AC/Heat
- Large teak countertop to port with chart drawer underneath

### **Fire Fighting and Safety Equipment**

- Fire Fighting Equipment: Kidde Marine Fire System
- Safety Equipment
- Life Rafts: AVON Life Raft
- Life Rings: Yes
- EPIRBS: ACR
- Smoke & Flare Signals: ORION

### **Fuel Filtration**

- Racor dual fuel/water filtration for main engines and generators
- Oil changing system
- Fuel transfer system, 220V AC pump with a 24VDC pump in parallel as backup
- Separ 2000 fuel filter inline on fuel transfer pumps

### **Guests Staterooms**

There are (4) guest staterooms including a forward VIP Suite. (3) of the Guest Staterooms have ensuite bathrooms with stall showers. The VIP has a queen bed and the other (3) guest cabins have upper and lower single bed berths.

## HVAC System

- New 30 Gal electric water heater
- Cruisair Tempered Water AC
- NEW Backup seawater pump for air conditioning system
- Delta T engine room ventilation system

## Main Galley Equipment

- Cooking Appliances
- Gaggenau 4-Burner ceramic cooktops
- Sharp Convection Microwave
- Refrigerators/Freezers
- (2) Sub-Zero refrigerators
- (1) Sub-Zero freezer
- (1) Sub-Zero ice maker
- NEW Dishwashers
- NEW Trash Compactor
- Garbage Disposer
- InSinkErator Evilution Pro
- Laundry Equipment
- Main Laundry Equipment
- NEW Miele Stackable Washer & Dryer Combo

## Main Propulsion

### Propellers:

- (2) VEEM - 5 Blades, NiBrAl Propellers
- (2) Aquamet High-Strength Stainless Steel Shafts

### Generators:

- (2) Onan 27 KW, 3600hrs
- Shelving over generators
- DC Electrical System
- (2) shorepower 50 Amp each Charles industries PM3 voltage stabilizer transformer

## Master Stateroom

The Master Suite is quite luxurious and features a custom fabric headboard with mirrored accents behind a custom King size pillow top mattress. Custom fabrics can be found throughout the suite. The king bed is actuated with large storage underneath including a bank of (5) teak drawers at the foot of the bed and a Gardall Safe under lift top bed. On either sides of the bed, stand beautiful teak-topped end tables with drawers and additional cabinet space underneath. Furthermore the corner settee offers another storage space underneath. Other features in the suite include dimmer lights and large double hanging lockers with mirrored doors. Apart from the mirrored doors, you will find large beveled wall mounted mirrors. The bomar hatch is equipped with a privacy shade. The suite comes complete with a 32" Sharp Flat Panel TV, Sony DVD Player, Bose Speakers, Bose Surround Sound, and additional 110V, telephone and television outlet. Entering the en suite head, a large mirrored storage closet with shelves offers ample storage, accompanied by large wall mounted vanity mirrors, a mirrored ceiling, custom wallpaper, Amtico teak and Holly flooring, Granite vanity counter-top with teak facing lower vanity, Magnum Opus elongated Head Hunter head, a large stall shower with one-

piece custom frameless shower door, Grohe brushed nickel shower & faucet fixtures, towel bars, and rings, along with an exhaust fan.

### **Other Engine Room Equipment**

- Hydraulic emergency bilge pump manifold to forward engine room and cockpit bilges
- Bennett Trim Tabs, dual piston with center tabs recessed in transom
- Structural Steel Engine Beds
- (3) Cameras
- Remotes for Eskimo Ice maker
- Access door to crew quarters
- Engine Room entrance gauges installed into fiberglass
- Electronics
- Communication System
- Satcom: KVH TracPhone

### **Port Guest Stateroom**

The Port Guest Stateroom comes fitted with upper and lower berths dressed in quilted bedspreads and an upgraded single custom full bed aloft with an actuated lower bunk for storage. The stateroom has custom wallpaper and carpeting. For additional storage, there is a Teak shelf and hanging locker with cedar lining. The stateroom comes complete with a 20" Toshiba Flat Screen TV, Direct TV, a DVD Player, Stereo speakers recessed in soffit - tied into salon stereo, and overhead Xenon lights and decorative rope lighting. Entering the en suite head, a large wall mounted medicine cabinet with mirrored doors offers generous storage, matched with a mirrored ceiling. Granite vanity counter-top with a teak facing mirror are accented with Amtico teak and Holly flooring. There is a towel bar & ring and the sink has a Grohe faucet. This ensuite has a stall shower with a shower light, AC and heat with registered soffit, and exhaust fan with vent.

### **Starboard Guest Stateroom**

The Starboard Guest Stateroom is carpeted with Majilite wall coverings and comes fitted with upper and lower berths with upgraded twin mattresses dressed in quilted bedspreads. For storage, there is a Teak hanging locker with cedar lining and storage drawers underneath. The stateroom comes complete with a 20" Toshiba Flat Screen TV, built-in overhead speakers, Stereo speakers recessed in soffit - tied into salon stereo, overhead Xenon lights and decorative rope lighting, and Temperature controlled AC and Heat.

### **Steering System**

- TeleNex power assist hydraulic steering
- Dual power steering pumps

### **Telephone System**

- Phone cable is CAT-5 to accommodate data phone systems
- Several Phones on board as well as Fax machine
- VHF
- ICOM M604 VHF radios
- ICOM CommandMic3
- Entertainment System
- Equipment Summary
- XM Radio
- Direct TV
- (3) SONY BluRay

- Bose Home Theater
- (6) LED/LCD Flat Screen TVs
- Monitoring System
- \*Equipment Summary: (3) Engine Room Cameras

### **Toilet Systems**

- Head Hunter fresh water system with plumbed backup

### **VIP Stateroom**

The VIP Suite is forward and features custom wallpaper and carpeting with a custom teak headboard over a center-line queen pillow top mattress topped with a quilted bedspread and (4) large storage drawers underneath. Teak storage cabinets line both sides of the bed accompanied with (6) overhead teak cabinets, a lovely teak shelf, and a spacious, cedar-lined, teak hanging locker offering ample storage. The VIP has mirrored bulkheads and a bomar hatch. The suite comes complete with a 26" Sharp Flat Panel TV, Direct TV, overhead stereo speakers, stereo speakers recessed in headlined tied into TV and stereo, overhead Xenon lights and decorative rope lighting, and separate switches for reading lights. Entering the en suite head, a large wall mounted medicine cabinet with mirrored doors offers generous storage, matched with a mirrored ceiling. Granite vanity counter-top with a teak facing mirror are accented with Amtico teak and Holly shower with a shower light, AC and heat with registered soffit, and exhaust fan with vent.

### **Water Filtrations**

- NEW (2) Grundfos pumps, w/ Silver Ion and UV sterilization

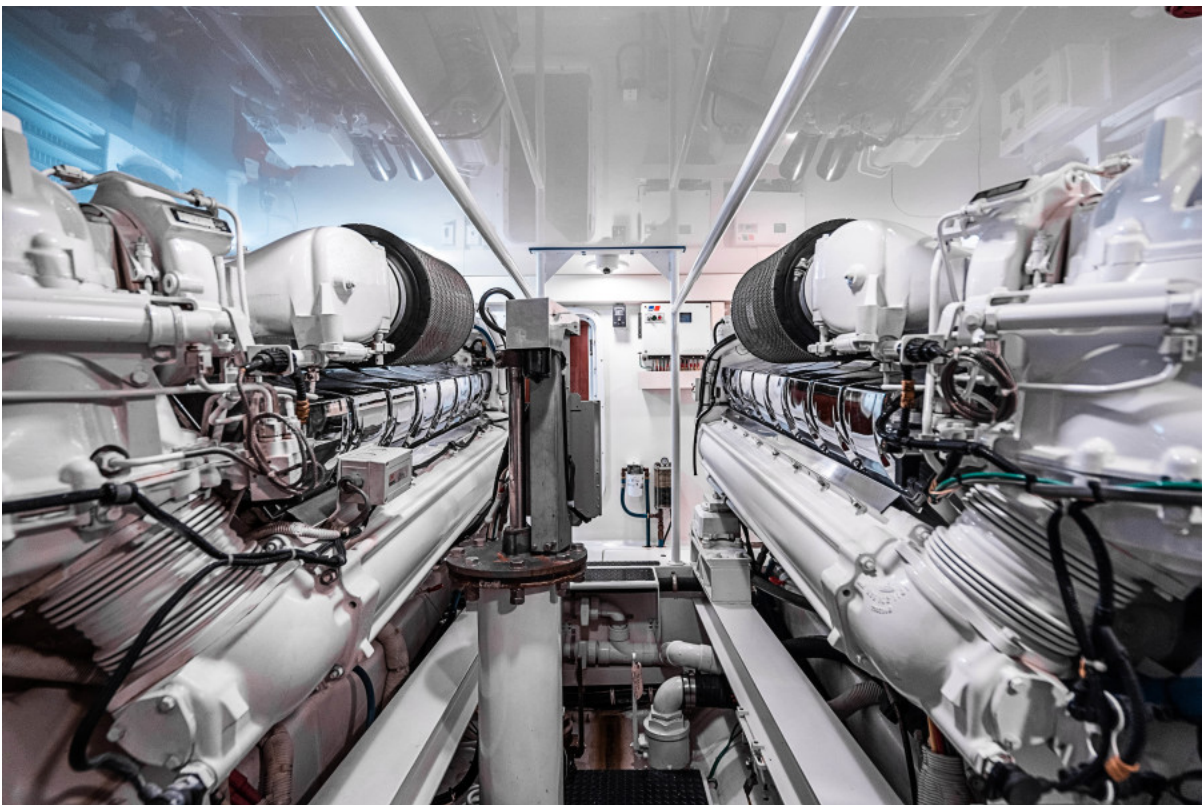
### **Watermakers**

- NEW Aquamatic Sea Recovery 1200 GPD with auto backNush





74 Viking

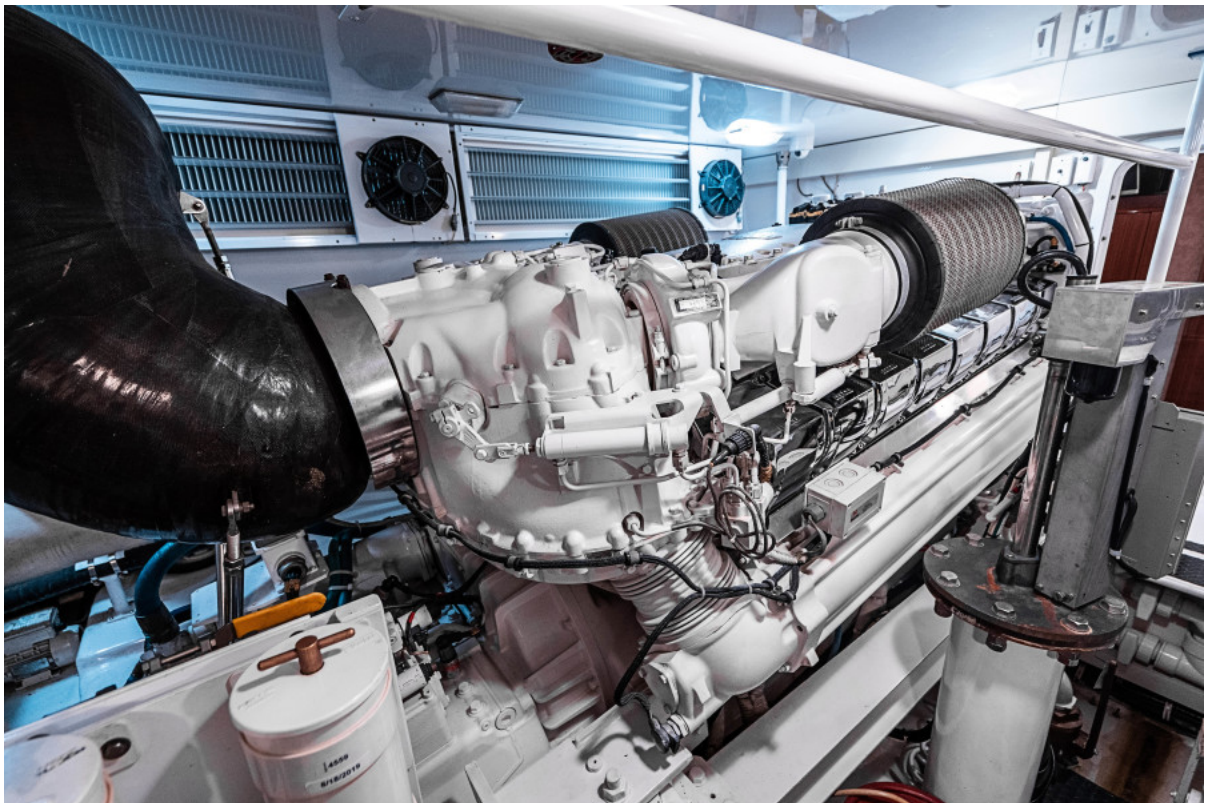


74 Viking Engine Room





74 Viking Engine Room



74 Viking Engine Room





74 Viking Engine Room



74 Viking Engine Room





74 Viking Crew



74 Viking Crew ensuite





74 Viking Bridge



74 Viking Helm





74 Viking Helm



74 Viking Bridge





74 Viking Bridge



74 Viking VIP Ensuite





74 Viking VIP



74 Viking VIP





74 Viking Guest



74 Viking Guest Ensuite





74 Viking Guest



74 Viking Master Ensuite





74 Viking Master



74 Viking Master



74 Viking Master



74 Viking Laundry





74 Viking Hall



74 Viking Day Head



74 Viking Salon



74 Viking Salon





74 Viking Galley



74 Viking Galley





74 Viking Salon



74 Viking Salon





74 Viking Salon



74 Viking Salon



74 Viking



74 Viking Tower





74 Viking Tower



74 Viking



74 Viking Fly



74 Viking





74 Viking



74 Viking





74 Viking Cockpit



74 Viking





74 Viking



74 Viking





74 Viking



74 Viking