



My Michelle

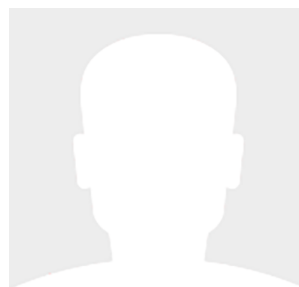
60' (18.29m) 2008 Viking Convertible
Fort Lauderdale Florida United States



OVERVIEW

\$1,750,000

Manufacturer:	Viking	Hull Material:	Fiberglass
Engines:	2 Caterpillar	Cruise Speed:	
Engine Model:	C-32	Max Speed:	
Engine HP:	1825	Cabins/Heads:	3 / 3
Beam:	18' 0"	Fuel Type:	Diesel
Max Draft:	5' 0"	Fuel:	300 G (1135.62 L)
Water:	1630 G (6170.22 L)		



Data Sheet

Category: Convertible Boats
Condition: Used
Model Year: 2008
Beam: 18' (5.49m)
Max Draft: 5' (1.52m)
LOA: 60' (18.29m)
Cabins: 3
Heads: 3

Fuel Type: Diesel
Hull Material: Fiberglass

Fuel Tank: 300 gal (1135.62 liters)
Fresh Water: 1630 gal (6170.22 liters)
Holding Tank: 135 gal (511.03 liters)
HIN/IMO: Vky60108B808

Engines/Generators

Engine 1

Caterpillar
C-32
1825HP
1360.90KW
Fuel: Diesel

Engine 2

Caterpillar
C-32
1825HP
1360.90KW
Fuel: Diesel

Summary/Description

The 60' Viking is considered to be one of the Vikings top performing Blue Water machines.

The 60' Viking is considered to be one of the Vikings top performing Blue Water machines. "My Michelle" is a beautiful example of how a 60' Viking should be maintained. This particular boat comes with a 4 stateroom layout which the majority of 60' convertible buyer is looking for. Also powered with proven marine Diesel 132A (1800 HP) Caterpillar engines. Fuel capacity to 1.920 gallons for sport fishing destinations.

Custom stone galley countertops with high glass teak interior. Another custom feature is the custom Palm Beach Tower, with upgrade Garmin electronics package. Recent hall side paint with a stunning "Haze Grey" color. If you are looking for a 60' Class 4 stateroom convertible that is captain maintained, with many custom upgrades then you should definitely take a look at "My Michelle"

Salon

- New salon smart TV (2022)
- New Yamaha stereo system and speakers (2022)
- Dimmers for quartz lights
- Bottle storage
- Teak strips in headliner
- Upgraded sofa
- (2) Backless bar stools
- Entertainment center
- Kenmore clear ice maker
- Electric salon door
- Hi-Low cocktail table with custom teak inlay, high gloss finish
- Teak on aft side of galley island
- Overhead LED lights on dimmers (2022)
- Teak and holly entrance sole
- Teak valances and lambrequins
- AC Control
- AC/DC and shore power breakers with generator start/stop controls
- Teak credenza/storage to port with drawers and shelf storage
- Smoke detector
- L-shaped sofa with storage below with décor pillows
- Octoplex ship electrical panel
- Bar storage to port with pull out access
- ICom VHF command mic
- Carpet runner

Galley

- Granite countertop (Verde Larvus) with Ogee edge
- Microwave/convection oven
- Garbage disposal
- Sub Zero refrigerators and freezers (2) refrigerators, (1) freezer
- New Gaskets 10/2018
- Freshwater tank gauge
- Storage at the end of galley
- Overhead LED lights on dimmers (2022)
- 110V outlet
- Undermount stainless steel sink
- Kenyon (4) burner cook top
- Exhaust vent
- Amtico teak and holly flooring
- Satin nickel faucet

Dinette

- Flat screen TV (1/2022)
- Seating up to 5
- Décor pillows
- Overhead lights on dimmers
- Table with custom inlay, high gloss finish
- Storage below seating

Companionway

- Teak accent strips in wall coverings
- Central Vac
- Custom rod storage to port side forward of the galley
- AV/computer equipment storage to starboard side forward of dinette
- Magnetic switches for all bilge lights
- Carpet runner with stair covers
- Laundry center with washer and dryer
- Linen closet to port side
- Bilge access for storage

Master Stateroom

- King berth with teak headboard and built in storage
- Mattress system #3 upgraded orthopedic mattress
- Large storage below berth
- Teak valance with AC discharge
- Reading lights
- Accent lighting below berth
- Private access to master stateroom head
- Overhead Bomar hatch with screen and blackout screen

- Upgraded décor package for pillow shams and mattress duvet
- Drawer storage below berth
- Teak hanging closet
- Telephone outlet
- New TV and speakers (1/2022)
- DVD player
- Teak top end tables
- Credenza with teak top
- Dimmers on LED overhead lights (1/2022)
- Custom wallpaper
- Small safe

Master Head

- Teak grate floor
- Dometic freshwater Vacuflush heads
- Linen closet
- Full length mirror
- Mirrored vanity
- Granite countertop (Verde Larvus with bone sink)
- Towel bar holder
- Stall shower with full one-piece glass door
- Exhaust fan
- Teak face on lower vanity with mirror above
- Custom Amtico teak and holly flooring
- Satin nickel shower fixtures and faucets
- Brushed nickel towel bars and rings
- Custom wallpaper

Forward Stateroom (VIP)

- Cross over optional VIP berths
- Overhead storage to starboard with shelving built in
- Private entrance to VIP head
- Overhead Bomar hatch with screen and blackout screen
- Storage below port single berth
- New TV (1/2022)
- Large storage below queen berth
- Hanging closet
- Reading lights
- Teak valances
- 110V outlet
- Overhead LED lights on dimmers

Forward Stateroom Head

- Dometic freshwater vacuflush head
- Exhaust fan
- New evaporator/fan assembly fwd. stateroom added in 9/2017
- Teak face on lower vanity with mirror above
- Custom Amtico teak and holly flooring
- Corian countertop with Bone sink (sagebrush)
- Satin nickel shower fixtures and faucet
- Brushed nickel towel bars and rings
- Stall type shower with bi-fold glass doors

Starboard Guest Stateroom

- (2) Single side by side berths with orthopedic mattress upgrades (storage below)
- 15" Flat screen TV
- Large storage overhead starboard berth
- Courtesy lighting
- Teak hanging closet
- 110V outlet
- AC control
- Dimmers on overhead lights
- Teak locket top

Starboard Guest Stateroom Head/Day Head

- Dometic freshwater Vacuflush head
- Exhaust fan
- Overhead Bomar hatch with screen and black out screen
- Companionway access
- Satin nickel shower fixtures and faucet
- Brushed nickel towel bars and rings
- Corian countertop with under mount Bone sink
- Teak face on lower vanity with mirror vanity above
- Custom Amtico teak and holly flooring
- Stall shower with bi-fold glass doors

Flybridge

- (2) 12V electric reel outlets
- (2) Recessed Miya Epoch US9 teaser reels
- Molded in triple aft spreader lights beneath tower standing platform
- Drop down electronics box
- Tower freshwater supply valves
- Refrigerated drink box
- Release teak pod
- Electronics console
- Palm Beach Tower hardtop

- Octoplex control panel (New 7/2021)
- Custom rod storage under port and starboard bench seating
- Murray Brothers helm chairs
- 3-sided "Rigid glass" enclosure with second spare set***
- Electronic trolling valves
- Recessed electronics boxes with gas springs
- Caterpillar single lever controls for POD with integrated bow thruster controls
- Push button catches for electronics boxes
- Fresh water outlet on bridge
- Large freezer box
- Cigarette lighter style 12V outlet
- Drip dry foam cushions
- Horn
- Release teak helm pod
- Handrail on side of helm console
- Trim tab switches
- Toggle switch for tri colored lights
- Gas pistons for bench seat lids

Flybridge Electronics

- New Flir M364 - 5/2020
- 3x Garmin 8617 MFD
- Garmin GRID remote
- GSD-26 Black Box Sounder
- Airmar PM411C-LWM Chirp Ducer
- Garmin GMR2526 XHD 6 ft open array radar
- Garmin GXM53 XM satellite antenna
- Garmin AIS 800 transceiver
- Garmin GHP reactor Autopilot
- 2x Icom M605 VHF
- Icom Control command mic for Tower
- Newmar hailer horn
- New Garmin camera system (2/2023)
- ACR spotlight
- Simrad chart plotter in overhead drop-down box
- Furuno RD 30 digital depth display
- Compass
- Trim tabs
- Caterpillar digital engine displays in overhead drop down
- NSS9 evo2D 9" Garmin screen top tower
- KVH TV6
- KVH satellite internet dome V30
- Moritz monitor
- Eskimo ice machine control panel
- 12V Stereo XM/FM/AM with JL audio amplifiers
- HD Sat converter
- Mike Latham camera system on outriggers and under hardtop

- (4) 4MM color ball engine room camera
- RF mouse
- Iridium handheld SAT phone dock station with external antenna
- ACR spotlight

Tower

- Tuna tower with molded 60' convertible 9' gap
- Engine controls and gauges
- ICom Command mic
- Pipework painted black to reduce glare
- Freshwater outlet
- New LED tower spreader lights (2/2022)
- (6) Rod holders on aft rail

Deck and Hull

- Painted hull (Yellow)
- Hawse pipes
- Underwater lights (New 9/2022)
- Transom door
- Pipewelders bow rail
- Black wrap on brow
- Faux Teak Transom
- Rupp triple spreader outriggers and center rigger
- Fresh water wash down in anchor locker
- Recessed trim tab covers
- Under mount bridge side hand rails
- Bow thruster
- Fore and aft bow cleats
- Prop pockets
- Underwater exhaust
- New bottom job (1/2023)

Cockpit

- Murray Brothers fighting chair with 4" pedestal
- Murray Brothers rocket launcher
- (6) Rod holders in tower legs
- Tackle center to port with (4) slide out drawers
- Dual cablemaster with 50 amp cords
- Engine room access
- Insulated box to port on mezzanine
- Ladder access to flybridge with teak steps
- 12 & 24V electric reel outlets
- Pressurized live well (New 2/2022)

- Seakeeper 16 Custom serviced. New rams, paint 11/2022
- Refrigerated starboard cockpit drink box
- Eskimo ice machine dumps into fish box
- Fresh and saltwater wash downs
- 2 lights in overhang
- Livewell in transom box
- Bait box and bait trays
- (2) Large fish boxes with split lids
- J Hooks for shore cords
- Release rod holders
- Teak sole with upgraded 5/8" teak boards
- Teak mezzanine
- Mezzanine with freezer storage
- Cockpit cover
- Electric reel outlets
- Courtesy lighting under gunnels
- Gaff storage
- Awlgrip lazarette

Engine Room

- Rebuilt Twin Caterpillar C-32 1825hp engine -In Frame majors in 2019
- Hours: 5650 on the blocks, approx. 1325 on full rebuilds
- ZF gears
- Electrosea system (Installed 4/2022)
- Dual 21.5KW Onan generators, 3600 hours each
- New 540 Eskimo ice maker
- Fuel priming pumps
- Fuel transfer pump
- Sea chest
- Oil change system
- Dripless shaft seals
- Dual Racor 1000's each engine
- Emergency bilge pump pick-ups for engines
- Tool box
- 1400 gal/per day water maker and extra fuel!
- CAT chrome package
- 1400 GPD water maker with auto back flush
- Dual steering pumps
- New hydraulic steering hoses (9/2022)
- Hot water heater
- New engine and house batteries (Installed 1/2022)
- Delta T ventilation system
- Kiddie fire system
- Trim painted at engine room entrance
- (4) Engine room cameras
- Glendinning cabledmaster
- Fiberglass side thru hulls

- Awlgrip forward bilge and anchor locker
- Battery chargers
- Awlgrip brass thru-hulls and sea strainers in engine room and forward bilges
- Snow white Racor fuel filters
- 110V outlet on aft bulkhead at entryway
- Bilge pumps

Highlights and Features

- Twin Caterpillar C-32 1825hp engines ...in Frame majors 2019
- Seakeeper 16 Custom install 11/17
- Factory installed forward extra fuel (300gal) - Total Fuel with SeaKeeper (1636 gal)
- New Garmin electronics 5/20
- Bottom paint and Propspeed on all running gear (1/2023)
- 1400 gal/per day water maker fully serviced and replaced high pressure hoses
- New Octoplex Screens on bridge (7/2021)
- Tournament pressurized live well modifications to improve factory well and add plumbing for two on deck live wells
- Custom removable anchor chute assembly 2017
- (2) 8 person hardpack liferafts mounted to hardtop (Serviced 11/2021)

Factory Options and Upgrades

- Upgraded Teak hi-lo coffee table with black stripping inlay
- Upgrade the dinette table to black inlay inside the bullnose
- LED lighting throughout vessel by AME
- LED tower spreader lights and cockpit ropelights installed by AME
- Complete rework of all A/V systems by AME-All new networking system with 2 Rukus Access points, New smart Tv's in staterooms and salon, New Definitive Technologies speakers and subwoofers in all rooms, Yamaha stereo systems in all staterooms and salon, Universal remote control systems in all staterooms and salon
- Galley - Custom full granite backsplash in Giallo Del Oro
- Granite countertop in galley
- All lower cabin doors upgraded to diamond pattern with solid borders
- Underwater exhaust
- Bow thruster controls in engine control levers
- Upgraded Murray elite flybridge helm chairs and fighting chair
- Dual Steering pumps on engines
- New livewell pump
- Electrosea system for AC water system
- New underwater lights

Disclaimer

The company offers the details of this vessel in good faith but cannot guarantee or warrant the accuracy of this information nor warrant the condition of the vessel. A buyer should instruct his agents, or his surveyors, to investigate such details as the buyer desires validated. This vessel is offered subject to prior sale, price change or withdrawal



without notice.







