



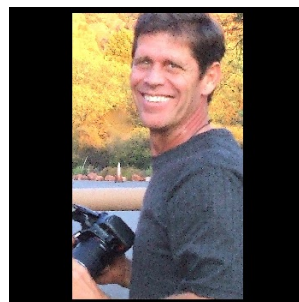
56' (17.07m) 2015 Princess Flybridge
Naples Florida United States



OVERVIEW

Manufacturer:	<i>Princess</i>		
Engines:	2 Man	Hull Material:	Fiberglass
Engine Model:	R6 800	Cruise Speed:	Knots
Engine HP:	800	Max Speed:	Knots
Beam:	15' 7"	Cabins/Heads:	3 / 2
Max Draft:	"	Fuel Type:	Diesel
Water:	130 G (492.1 L)	Fuel:	699 G (2646 L)

\$1,365,000



Data Sheet

Category: Motor Yachts
Condition: Used
Model Year: 2015
Beam: 15'7" (4.75m)
(0.00m)
Min Draft: 4' 3" (1.30m)
LOA: 59' 8" (18.19m)
Cabins: 3
Sleeps: 8
Full Beam Master: Yes
Heads: 2

Crew Cabins: 1
Crew Sleeps: 1
Knots
Knots
Fuel Type: Diesel
Hull Material: Fiberglass
Hull Shape: Displacement
Hull Warranty: None
Air Conditioning: Yes

Displacement: 59084 lbs
SeaKeeper: Yes
Bow Thruster: Yes
Stern Thruster: Yes
Fuel Tank: 699 gal (2646 liters)
Fresh Water: 130 gal (492.1 liters)
Builder: Princess Yachts
HIN/IMO: PYIN60671415

Engines/Generators

Engine 1

Man
R6 800
Inboard
800HP
Fuel: Diesel
Hours: 745
Hours Date: 05-24-2022
Year: 2016
Location: Port

Engine 2

Man
R6 800
Inboard
800HP
Fuel: Diesel
Hours: 745
Hours Date: 05-24-2022
Year: 2016
Location: Starboard

Generator 1

Onan
21.50KW
Hours Date: 05/24/2022

Summary/Description

Just pulled out for new Bottom Paint. Prop speed, all new anodes, teal cleaned. We are pleased to welcome you aboard this elegant, impressive, and spectacular 56 Princess luxury yacht. This beautiful yacht offers both comfort & luxury with extensive upgrades throughout. The vessel is washed weekly

NOTABLE UPGRADES

Exterior Upholstery upgrade. 2024

- **SeaKeeper NK9**
- **Quartz Counters throughout**
- **Stern Thruster**
- **Hard wood flooring in Saloon**
- **All new Carpet throughout lower deck**
- **New Strut Bearings 2021**
- **Backup Cameras**
- **New Sunbrella Bow sundeck pads**
- **New Water maker system 2022**
- **New batteries 2023**
- **New Bottom Paint 4/2023**
- **Prop Speed 4/2023**
- **All new anodes 4/2023**
- **Teak cleaned 8/2023**
- **New Master Stateroom A/C & Twin Stateroom 8/2023**

STANDARD EQUIPMENT

- 220v/240v diesel generator (9.5kW)
- Dual station remote control electric anchor winch
- Dual station electric trim tabs with indicators
- Dual station autopilot
- Dual station VHF with DSC R/T with intercom
- Dual station speed and distance log
- Dual station echo sounder with alarm
- Remote control searchlight
- Combination microwave/conventional oven/grill
- Cocktail cabinet with refrigerator
- Flybridge wet-bar including sink, electric barbecue and cool-box Flybridge convertible sun-bed
- Electric quiet-flush toilets
- Saloon LED TV/DVD/radio linked to flybridge speakers
- Stereo CD/radio in owner's stateroom
- Teak-laid transom platform/cockpit deck/flybridge stairway/ stairs to side decks

- Triple opening stainless-steel framed saloon doors
- Full length transom platform with tender storage facilities Transom door
- Hot and cold transom shower
- Cockpit night cover

DECK FITTINGS

- Teak-laid transom platform, cockpit deck, flybridge stairway and stairs to side decks
- Reversible electric anchor winch with foredeck, main helm and flybridge controls
- Self stowing 25kg/55lb Delta anchor with 40m of chain
- Stemhead roller with automatic anchor launch and retrieve
- Stainless-steel bow, stern and spring cleats
- Stainless-steel bow fairleads
- Stainless-steel pulpit and guard rails
- Stainless-steel coachroof and flybridge rails
- PVC rubbing band with stainless-steel insert
- Foredeck hatch
- Full set of IMCO navigation lights
- Riding light
- Twin beam searchlight with dual-station remote controls
- Twin electric horns
- Fuel and water fillers

Aft Cockpit area

- Self-draining
- U-shaped seating with teak table
- Lockable access hatch to engine room and lazarette
- Steps to side decks
- Cockpit lighting
- Transom gate leading to bathing platform
- Side lockers
- Fender storage
- 220/240v shore support inlet
- Stainless-steel handrails
- Locker containing remote fuel cocks, manual bilge pump with valve chest and manual controls for automatic fire extinguishers
- Integral stairway to flybridge with teak treads
- Teak-laid transom bathing platform with foldaway swimming ladder, hot and cold shower
- Dinghy chock system
- Electro-hydraulic raise/lower mechanism for transom platform (suitable for a tender up to 400kgs) is optionally available

FLYBRIDGE

- Dual station instrument controls (see Lower Helm Position)
- Visible and audible engine warning system
- Bilge pump audible alarm
- Twin helm seats
- Forward facing L-shaped seat which converts to sunbed
- U-shaped seating area with teak table
- Wetbar with sink and electric barbecue
- Refrigerated 2 drawer Isotherm no frost **UPGRADE**
- Loudspeakers linked to saloon stereo
- Integral stairway from aft cockpit with clear view hatch
- Wind deflector screen
- Stainless-steel handrails
- GRP radar arch
- Console and seat covers
- Matched whip aerials for VHF R/T and radio

LOWER HELM POSITION

- Twin helm seats with fore and aft adjustment for helmsman
- Electric-opening side window at helm position and on port side
- Instrument console with engine instruments and fuel gauges
- Dual station instruments and controls at Flybridge and Lower Helm Position: rudder position indicator electronic engine controls power-assisted hydraulic steering with adjustable steering wheel
- Bow & Stern thruster controls
- anchor winch remote control ▶ trim tab controls
- autopilot
- VHF DSC R/T with intercom
- speed and distance log echo sounder with alarm
- searchlight remote control
- high-speed magnetic compass ▶ horn, Navigation light switches
- Chart table with light and chart stowage
- Windscreen wipers with freshwater windscreen wash system
- Bilge pump controls with visual 'pump running warnings
- Mesh PVC sunscreens
- 24v and 240v control panel ■ 12v outlet
- Red night lighting

DECK SALOON

- U-shaped sofa with coffee table on starboard side ■ Port sofa
- Sideboard units with refrigerator, bottle and glass
- storage and radio/DVD with saloon and flybridge
- speakers
- 32" LED TV (with electric raise/lower mechanism) ■ Triple stainless-steel framed sliding doors

Tinted windows

- Blinds, curtains or sunscreens to all windows and doors
- Overhead downlighters
- Clock and barometer
- Dining area with U-shaped seating and additional stools (to seat 6 in total)

GALLEY

- Quartz worktop **UPGRADE**
- 3-zone ceramic hob
- Combination microwave/conventional oven with grill ■ Stainless-steel sink with mixer tap
- Chopping board
- Refrigerator with icebox
- Waste disposal bin
- Overhead and concealed lighting
- Drawers and storage cupboards
- Dedicated cutlery drawer and crockery storage
- Provision for dishwasher and additional refrigerator

OWNER'S STATEROOM

- Large double bed with drawers below ■ Twin bedside tables Quartz tops **UPGRADE**
- Wardrobe and shelves
- Dressing table
- Mirror
- Storage lockers and drawers
- Downlighters and individual berth lights
- Stereo CD/radio
- **En-suite bathroom:**
- Washbasin with Quartz worktop **UPGRADE**
- Mirror
- Shower compartment with automatic pump out ■ Extractor fan
- Bathroom accessories

FORWARD GUEST CABIN

- Large double bed
- Wardrobe and shelves
- Storage lockers and drawers
- Mirror
- Dressing table with mirror
- Downlighters and individual berth lights
- Large deck hatch/skylight with flyscreen and blind ■ Stowage location for dinette stools (2)
- **En-suite bathroom:**

- Washbasin with Quartz worktop **UPGRADE**
- Shower compartment with automatic pump out
- Extractor fan
- Bathroom accessories
- Mirror
- Dual access from passageway

STARBOARD GUEST CABIN

- Two single berths
- Mirror
- Bedside locker
- Wardrobe with shelf ■ Storage locker
- Downlighters and individual berth lights
- 22" Led TV

OPTIONAL AFT CABIN

- The optional crew cabin incorporates a single berth, storage lockers and overhead and berth lighting.
- There is a separate toilet compartment with washbasin and electric quietflush WC. Both compartments have opening portholes and additional light is provided by the transom window

POWER AND DRIVE SYSTEMS

- 4-bladed propellers in nickel aluminum bronze
- Bow & Stern thrusters (130kgf/287lbf) with dual-station controls ■ Engine room lighting
- Lockable access hatch to engine room and lazarette
- Power-assisted electronic steering system with hydraulic back-up system
- Trim tabs with indicators
- Electronic engine and gear shift controls
- Engine room extractor fans with electronic time delay ■ Dripless shaft seals
- Automatic fire extinguisher system

FUEL SYSTEM

- Twin fuel tanks (in NS8 marine grade alloy) with interconnection system giving 582 gallons/699 US gallons/2650 litres capacity
- Fuel fillers on port and starboard side decks
- High-capacity duplex fuel filters/water traps with audible and visual fuel contamination warning system at lower helm
- Remote fuel isolation controls in cockpit locker ■ Fuel gauges at lower helm console

Mechanical Disclaimer

Engine and generator hours are as of the date of the original listing and are a representation of what the listing broker is told by the owner and/or actual reading of the engine hour meters. The broker cannot guarantee the true hours. It is the responsibility of the purchaser and/or his agent to verify engine hours, warranties implied or otherwise and major overhauls as well as all other representations noted on the listing brochure.

Disclaimer

The company offers the details of this vessel in good faith but cannot guarantee or warrant the accuracy of this information nor warrant the condition of the vessel. A buyer should instruct his agents, or his surveyors, to investigate such details as the buyer desires validated. This vessel is offered subject to prior sale, price change or withdrawal without notice.

From the Manufacture

The new Princess 56 perfectly combines a spacious and exquisitely finished interior with an exhilarating performance and is destined to become the new benchmark for her class.

Out on deck, the expansive cockpit features a teak dining table and generous U-shaped seating. Teak-laid steps either side of the transom lead to the bathing platform which can be optionally fitted with a raise/lower mechanism to ensure easy stowage, launch and recovery of a tender.

For panoramic views, dining can also be enjoyed on the spacious flybridge where further seating surrounds a second alfresco dining table. Twin helm seats are complemented by a versatile 'L' shaped companion seat to starboard which can be easily converted into a sun bed.

As with all Princess craft, the interior is crisp and contemporary and finished to the highest quality to create an interior ambience of a much larger vessel. The beautifully styled main saloon is bright and airy with large wrap around windows providing panoramic views. The open-plan arrangement features a U-shaped sofa and coffee table, with additional seating to port and a separate raised dining area forward, opposite the well equipped galley, ensuring a highly sociable layout.

The lower accommodation comprises of three beautifully appointed cabins including a full beam master stateroom and a spacious forward guest cabin, both with generous en-suites. The latest resin infusion technology allows for a less intrusive stiffening structure, increasing the space available for accommodation below decks, whilst a new single pane hull window offers unrivalled views when away from port. An optional aft cabin is available with its own WC, incorporating a single bed for crew or occasional guests.































































