



ZOUT

100' (30.61m) 2021 Maïora 30 Convertible
Viareggio Italy



OVERVIEW

Manufacturer: *Maïora*

Engines:	2 MTU	Hull Material:	GRP
Engine Model:	16V 2000 M96L	Cruise Speed:	22 Knots
Engine HP:	2600	Max Speed:	26 Knots
Beam:	24' 6"	Cabins/Heads:	5 / 6
Max Draft:	6' 11"	Fuel Type:	Diesel
Water:	739.68 G (2800 L)	Fuel:	3473.86 G (13150 L)

€8,900,000



Data Sheet

Category: Motor Yachts
Condition: Used
Model Year: 2021
Beam: 24'6" (7.49m)
Max Draft: 6' 11" (2.11m)
LOA: 100' 5" (30.61m)
Cabins: 5
Sleeps: 12
Pullmans: 2
Twin Berths: 2
Double Berths: 3
Full Beam Master: Yes
On Deck Master: Yes
Heads: 6

Crew Cabins: 3
Captain's Quarters: Yes
Crew Sleeps: 5
Crew Mess: 1
Maximum Speed: 26 Knots
Cruise Speed: 22 Knots
Fuel Type: Diesel
Hull Material: GRP
Hull Shape: Semi Displacement
Air Conditioning: Yes

Gross Tonnage: 205
Displacement: 61 tonnes
Stabilizers: Standard and Zero Speed
Stabilizer Brand: CMC Fin
Fuel Tank: 3473.86 gal (13150 liters)
Fresh Water: 739.68 gal (2800 liters)
Classification: RINA
Builder: Maiora
Designer: Maiora
Interior Designer: Fossati Design Bureau
Italian

Engines/Generators

Engine 1

MTU
16V 2000 M96L
Inboard
2600HP
1938.82KW
Fuel: Diesel
Hours: 580
Hours Date: 04-22-2024

Engine 2

MTU
16V 2000 M96L
Inboard
2600HP
1938.82KW
Fuel: Diesel
Hours: 580
Hours Date: 04-22-2024

Generator 1

KOHLER
Gensets parallel system + Seamless transfer
45KW
Hours: 1980
Hours Date: 04/22/2024

Generator 2

KOHLER
Gensets parallel system + Seamless transfer
Hours: 1980
Hours Date: 04/22/2024

Summary/Description

Motor Yacht ZOUT is a 100' 5" (30.61m) yacht for sale, built and launched by yacht builder Maiora and delivered in 2022. This vessel sleeps up to 12 guests in 5 staterooms and has accommodations for 5 crew in 3 cabins.

Overview

The most unique vessel in her category is now for sale! ZOUT was launched in 2022 as part of the Maiora 30 Convertible series. Utilizing the same proven hull as the 30 Walkaround, she features an additional upper salon, allowing for more internal space and the creation of a sunbathing area on the roof.

At 30.61 meters in length, ZOUT can still be registered under 24 meters while boasting one of the largest beams for her size at 7.5 meters. The total internal volume of 205GT surpasses the competition, creating ample space for guests and enabling the addition of unique features such as a sauna, an upper salon, and all en-suite cabins.

The floor-to-ceiling windows on ZOUT main deck bring plenty of natural light into the salon and offer an unobstructed view of the landscape. The main deck is home to the full-beam master stateroom, with the en-suite built with marble located behind the bed, allowing for better sound insulation from the galley. The shower can be used as a hammam to enhance your onboard experience. If you fancy an outdoor lunch, a large table is located on the aft main deck, fully protected from the sun.

On the lower deck, 2 en-suite twin staterooms with pullman beds are located forward, and 2 double Staterooms are located aft. A garage with space for a 6.2m Tender, which is very unique for a 30m motor yacht, and a sauna with direct access from the swimming platform can be found on this deck.

The sundeck of this 30m motor yacht, is where you will spend most of your time. A very versatile space, it is split between indoor and outdoor areas. The upper salon of 50 sqm has a dining table for 10 guests and a couch area. The side windows can be fully opened, as well as the doors, to create an in-out space for cozy evenings. The sundeck features 120 sqm of exterior space. The aft deck has a flexible layout with loose furniture that can be set up according to your needs. There is also direct access to the observatory space, which consists of a large sun pad on the roof for ultimate privacy and a 360° view. The forward area of the sundeck has a U-shaped couch with a coffee table for privacy in the marina or a 180° view at the anchor. In front of that couch, is a sunbathing area that can be reconfigured to your needs.

The bow of ZOUT can accommodate 2 jet skis for added fun onboard. ZOUT can accommodate 5 crew in 3 cabins to support the guests.

Equipped with the latest onboard technologies and fully loaded with options, ZOUT is a turn-key yacht ready for the summer season.

Key Features

- 205 GT providing more space than any similar yacht
- Garage for up to 6.2m tender – unbeatable on that yacht range
- Upper salon with retractable windows and concealed doors
- Up to 27 Knots
- 120 sqm outdoor area on the sundeck divided into 2 areas + the observatory deck

Accommodation

1 x En-suite Master stateroom located forward on the main deck

2 x En-suite VIP staterooms located on the lower deck fitted with double beds

2 x En-suite twin guest staterooms located on the lower deck fitted single beds + 2 pullmans

- CREW Accommodation:

3 x Cabins for 5 crew, 2 bathrooms: (1 single captain's cabin + 2 twin bunk bed cabins)

Machinery

- MAIN ENGINES

2 x 2600 Hp (1939 kW) MTU 16V 2000 M96L @ 2450 RPM

Engine Type: Inboard

Engine/Fuel Type: Diesel

Drive Type: V Drive

Hours: 580h

- GENERATORS AND ELECTRICITY

2 x KOHLER 45 kW Gensets parallel system + Seamless transfer

Hours: 1980h

Galley Equipment

2 x Refrigerators LIEBHERR

1 x Freezer LIEBHERR

Icemaker

Wine Cellar

90cm Induction hob MIELE

90cm Hood MIELE

90cm Oven MIELE

Microwave oven MIELE

Dishwasher MIELE

Option Included

Full convertible air-conditioned upper deck salon with aft electric door that slides and hides completely out of the way and up/down electric side windows

Hamam in the Master Suite's bathroom, equipped with Calacatta white marble of Carrara

Sauna in the aft area by the sea, located next to the swimming platform

Calacatta white marble of Carrara also for the sinks in the bathroom

Privacy pop-up shade from the ceiling (aft deck)

Observatory deck dedicated to private sunbathing

Sunbeds on the foredeck

Sunbathing areas in the aft sundeck

Upgrade (2) KOHLER 45 kW

Gensets parallel system + Seamless transfer

Upgrade (2) MTU 16V 2000 M96L from 1900 Hp to 2600 Hp

Upgrade (2) larger anchors instead of one and double stainless-steel housing

Upgraded more powerful Bow and Stern thrusters

Side garage and haulage/launching system for up to 6.20m tender

Bow area hydraulic crane for toys/jetski/service tender

Teak on Flybridge

Upgrade FURUNO Navigation Equipment package with Radar FAR 2238

Navigation Software AXSEA TimeZero Professional for mega-yacht with 5 monitors 24" in the helm station

FLIR thermal camera

AIS and Weather Station

6 x Camera CCTV system

2 x External Control Wings Port and Starboard

Carbon Fibre poles for outside shade and microholed tents

Duplex IDROMAR 360 l/h tot. watermaker

Third Control station (aft located) + Display

CMC Electric Fin Stabilizers (Zero Speed and Underway)

Monitoring System

GSM Text Alarm system via text message on mobile phone, JL Speakers (outside)

B&W speakers (inside)

SONOS audio system

65" SAMSUNG 8K pop-up TV in the upper deck saloon

Pop-up mechanism

65" SAMSUNG 8K TV in the master suite (main deck)

55" SAMSUNG 8K TV in the main deck saloon with opening-up system

SEATEL ST24 TV Antenna

One-off custom-made piece of Art by GIANFRANCO ZAPPETTINI on the front in the main saloon

Water softener

Water U.V. sterilizer

Cooler fridge in the upper deck saloon

1 x Bow area professional MIELE washer

1 x Bow area professional MIELE dryer

1 x Bow area professional LIEBHERR freezer

1 x Crew Dinette professional MIELE washer

1 x Crew Dinette's professional MIELE dryer

Additional MIELE upgrade household appliances

LAN & Wi-Fi Network; (2) 4G GSM outdoor antennas; Wi-Fi Marine antenna

Tender and Toys

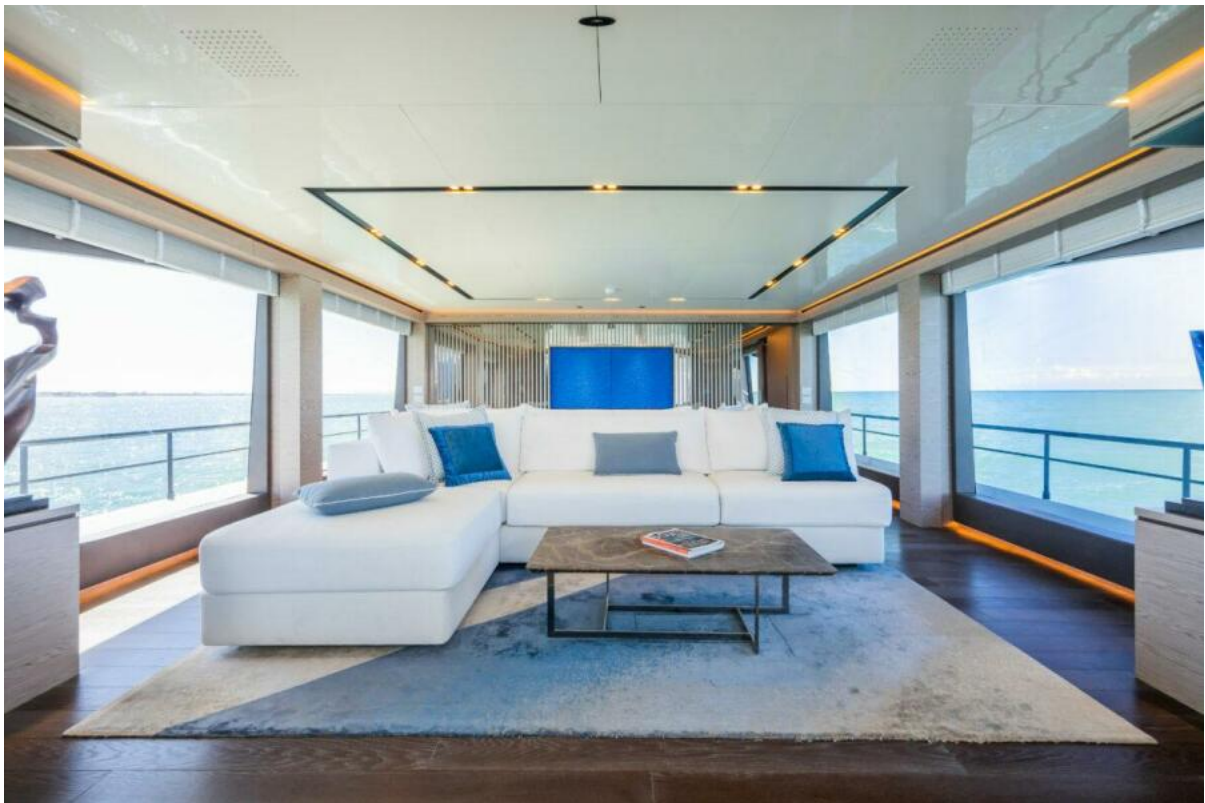
- Williams 5.65m 190hp

- Jet Ski Spark 90hp

Disclaimer

The company offers the details of this vessel in good faith but cannot guarantee or warrant the accuracy of this information nor warrant the condition of the vessel. A buyer should instruct his agents, or his surveyors, to investigate such details as the buyer desires validated. This vessel is offered subject to prior sale, price change or withdrawal without notice.





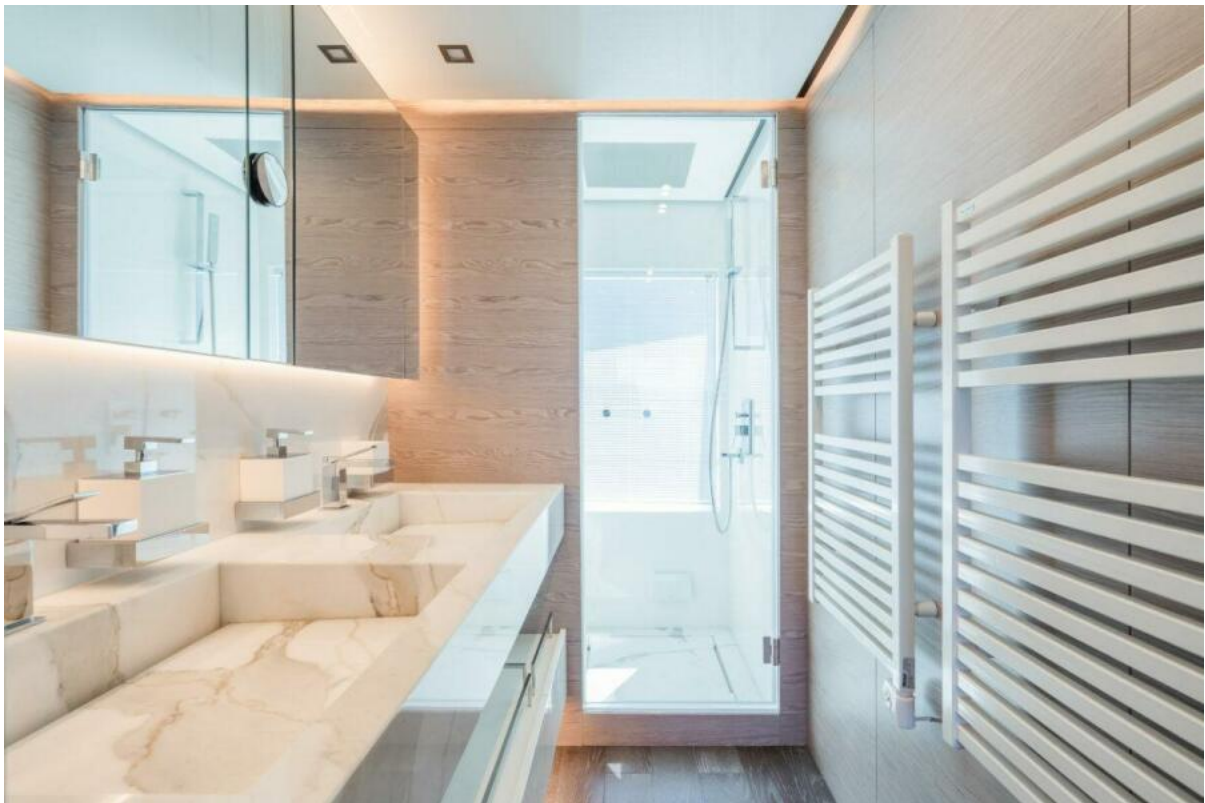


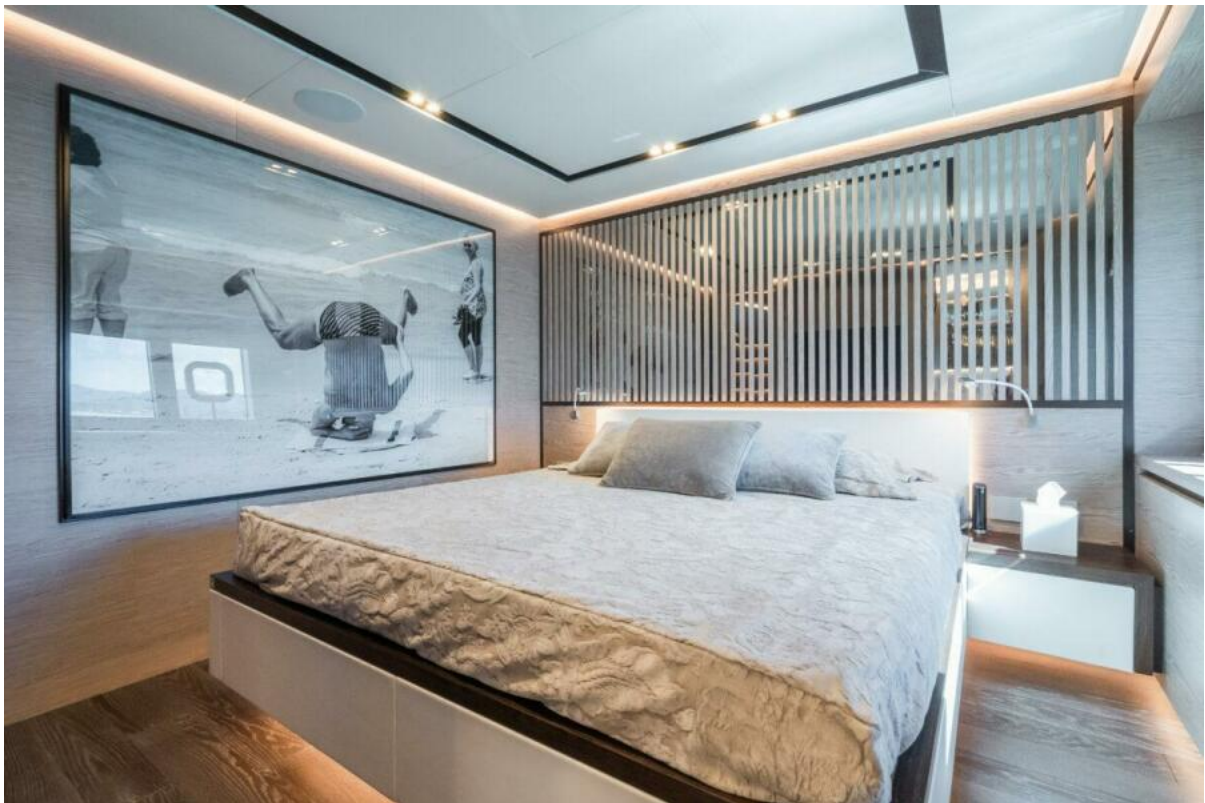






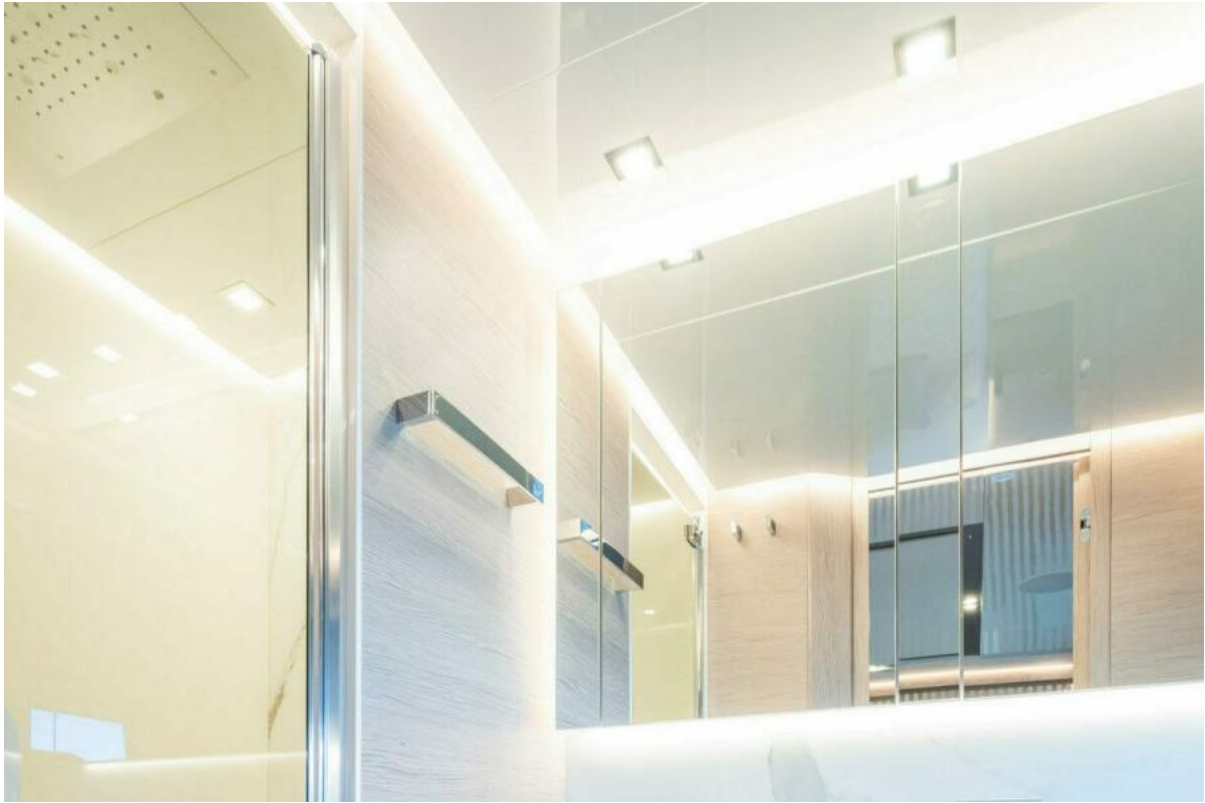












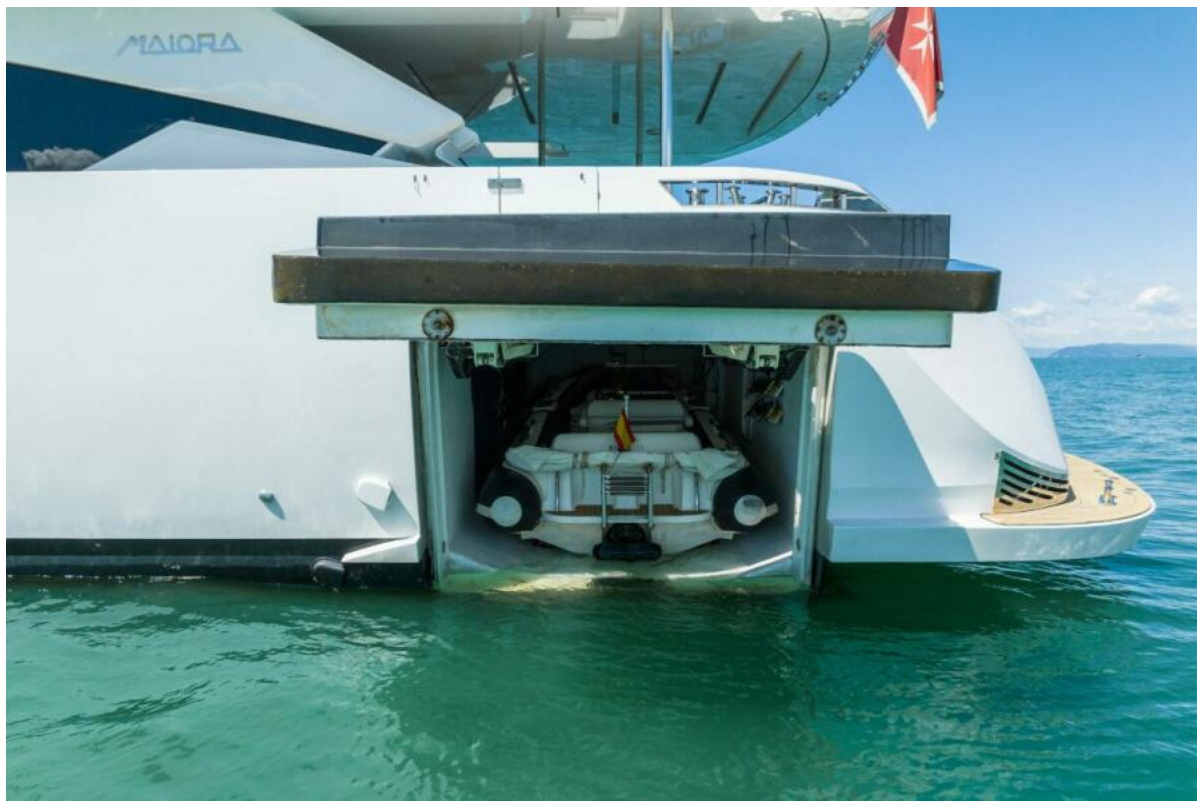






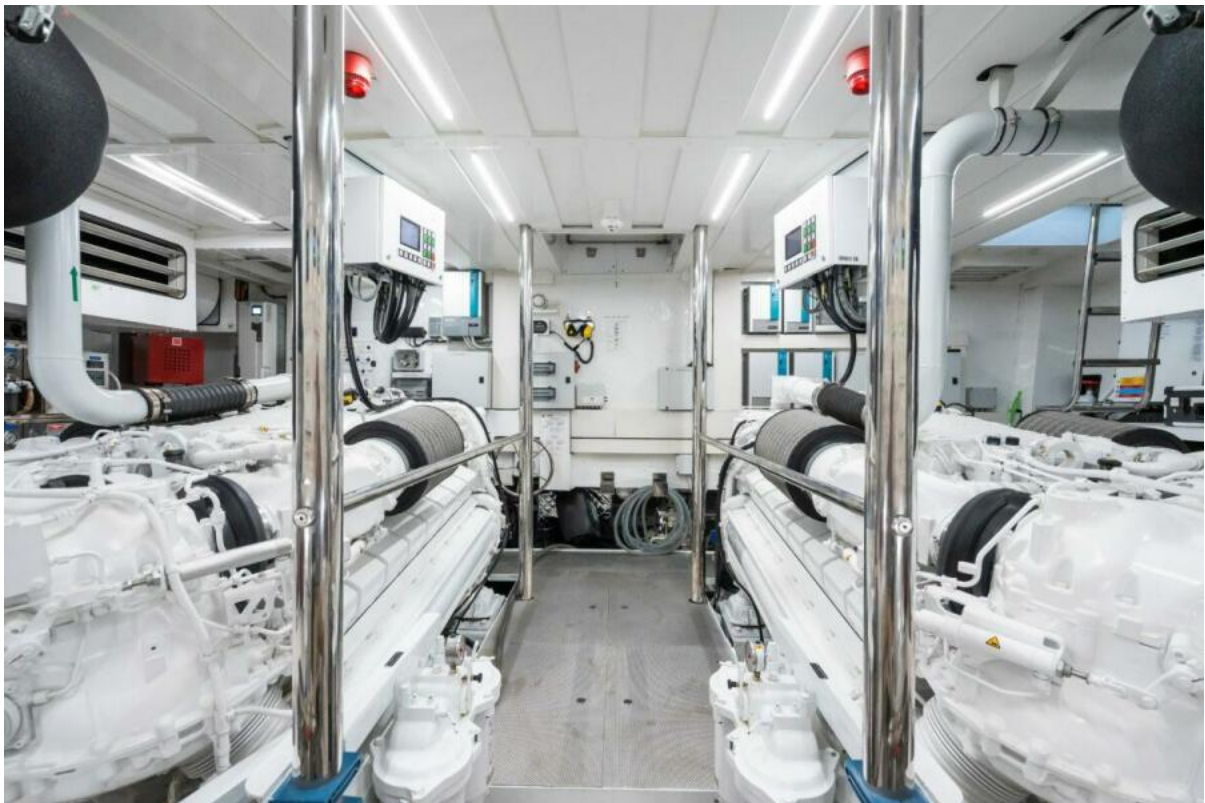


















GA - ZOUT

