



# FOREVER 32

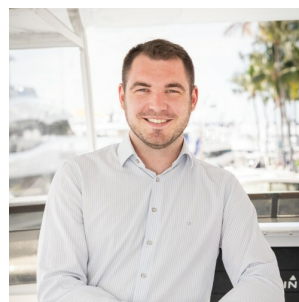
72' (22.00m) 2018 Nova Marine Black Shiver 220  
Porto Cervo Italy



## OVERVIEW

Manufacturer:	Nova Marine		
Engines:	2 MAN	Hull Material:	Fiberglass
Engine Model:	V12	Cruise Speed:	38 Knots
Engine HP:	1150	Max Speed:	50 Knots
Beam:	19' 4"	Cabins/Heads:	1 /
Max Draft:	3' 5"	Fuel Type:	Diesel
Water:	132.09 G (500 L)	Fuel:	845.35 G (3200 L)

€2,800,000



## Data Sheet

Category: Rigid Inflatable Boats  
Condition: Used  
Model Year: 2018  
Beam: 19'4" (5.90m)  
Max Draft: 3' 5" (1.05m)  
LOA: 72' 2" (22.00m)  
Cabins: 1  
Sleeps: 2  
Double Berths: 1

Crew Cabins: 1  
Maximum Speed: 50 Knots  
Cruise Speed: 38 Knots  
Fuel Type: Diesel  
Hull Material: Fiberglass  
Hull Finish: GRP and Kevlar reinforced plastic

Gross Tonnage: 44  
Fuel Tank: 845.35 gal (3200 liters)  
Fresh Water: 132.09 gal (500 liters)  
Classification: Pleasure  
Builder: Novamarine  
HIN/IMO: IT-BSH22011B819

## Engines/Generators

### Engine 1

MAN  
V12  
1150HP  
857.56KW  
Fuel: Diesel  
Hours: 500  
Hours Date: 06-29-2023  
Year: 2018

### Engine 2

MAN  
V12  
1150HP  
857.56KW  
Fuel: Diesel  
Hours: 500  
Hours Date: 06-29-2023  
Year: 2018

## Summary/Description

FOREVER 32 is a recent Black Shiver 220 for sale, built and launched by Novamarine and delivered in 2018. This vessel sleeps up to 2 guests in 1 stateroom.

## Overview

Delivered in 2018 by Novamarine, Forever 32 is the only Black Shiver 220 available for sale. In perfect condition, ready to go, and priced to sell.

Onboard you can enjoy the spacious sunbathing areas or feel like a racing pilot while driving the yacht up to 50 knots! Her convertible en-suite cabin for 2 people is perfect for a weekend or a few days on board while the crew is staying in a separate cabin. The kitchen is located next to the Guest cabin with direct access from the cabin or outside. With a 38-knot cruising speed, you will comfortably reach your next destination in no time. Once at anchor, the sea access is easy thanks to the stairs located on the swimming platform. A hidden shower is in the mast aft next to the sea.

A unique opportunity to buy one of the latest Black Shiver 220!

### Key Features

- The only Black Shiver 220 for sale
- Turn-Key condition with only 500h on engines
- Rolls-Royce Kamewa Propulsion
- Missoni outdoor furniture
- Separated Kitchen area

## Interior

- Cabin

Master Cabin with a double bed, sofa, linen cupboard, and a head with toilet, shower, and basin.

- Saloon

Small dinette with sofas, lockers for small objects, refrigerator, ceramic cooktop, and combined microwave.

- Crew Quarter

One Cabin for 2 crew members, equipped with 2 single beds and head toilet and sink.

## **Entertainment Equipment**

DVD tuner – all the area will be served by the audio channel operated with remote control.

## **Deck Equipment**

- A Sanguinetti anchor
- Two showers in the chain's storage locker – one with fresh water to wash the chains, one is a seawater shower
- Windlasses
- 2 cleats in the aft areas and 2 forward (AIS 316 stainless steel)
- T-top in fiberglass reinforced plastic painted black
- Large sunbathing areas

## **Swim ladder, handrail, aft platform**

- Carbin gangway equipped with bushing and bag of stowage
- Swimming manual ladder under the aft platform
- Two freshwater showers – one with hot water

## **Pilothouse/Helm**

- 3 driving stations
- Adjustable seat and backrest

## **Communication/Navigation Equipment**

- VHS DSC radio telephone
- D Class with one station and removable handset
- Nav Station LCD display with functions of Chart Plotter with the Mediterranean chart
- Depth gauge
- Magnetic compass according to the regulation in force

## **Machinery**

- 2 MAN engines Model V12 1550 HP coupled by a gear reduction unit and a transmission joint to the propulsion.
- Propulsion: Waterjets are KAMEWA Rolls-Royce Model A4
- Generator: 5 kw generator

## Auxiliary Equipment

- Bilge water exhaust system: 24 DC powered bilge electronic pump
- Engine room ventilation system
- Fuel System
- Fresh water system

## Electrical Equipment

- DC 24 V Systems
- AC 230 V Systems
- Electrical panels
- Navigation lights
- Internal and external lights
- Engine Room Lighting

## Safety, Security and Firefighting Equipment

- Alarms
- Firefighting System

## Disclaimer

The company offers the details of this vessel in good faith but cannot guarantee or warrant the accuracy of this information nor warrant the condition of the vessel. A buyer should instruct his agents, or his surveyors, to investigate such details as the buyer desires validated. This vessel is offered subject to prior sale, price change or withdrawal without notice.



















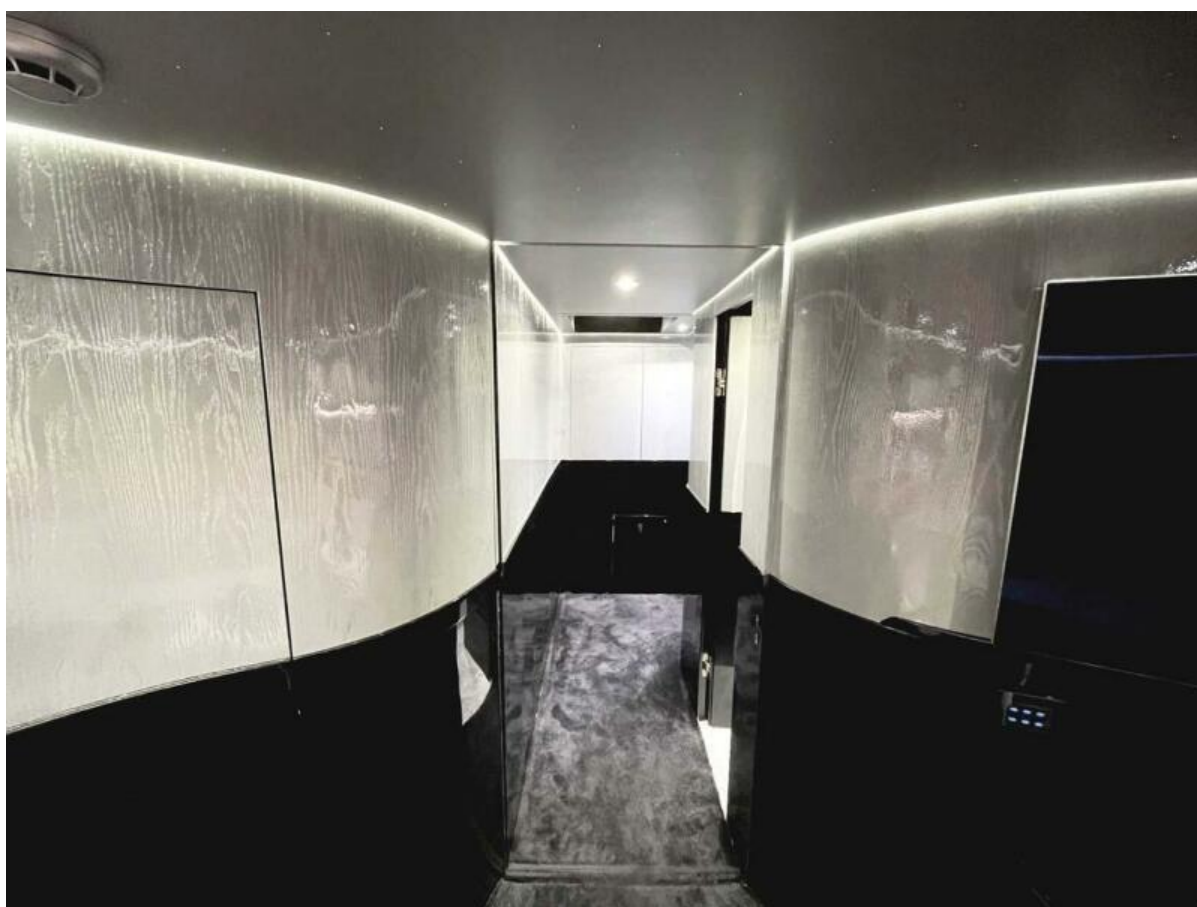








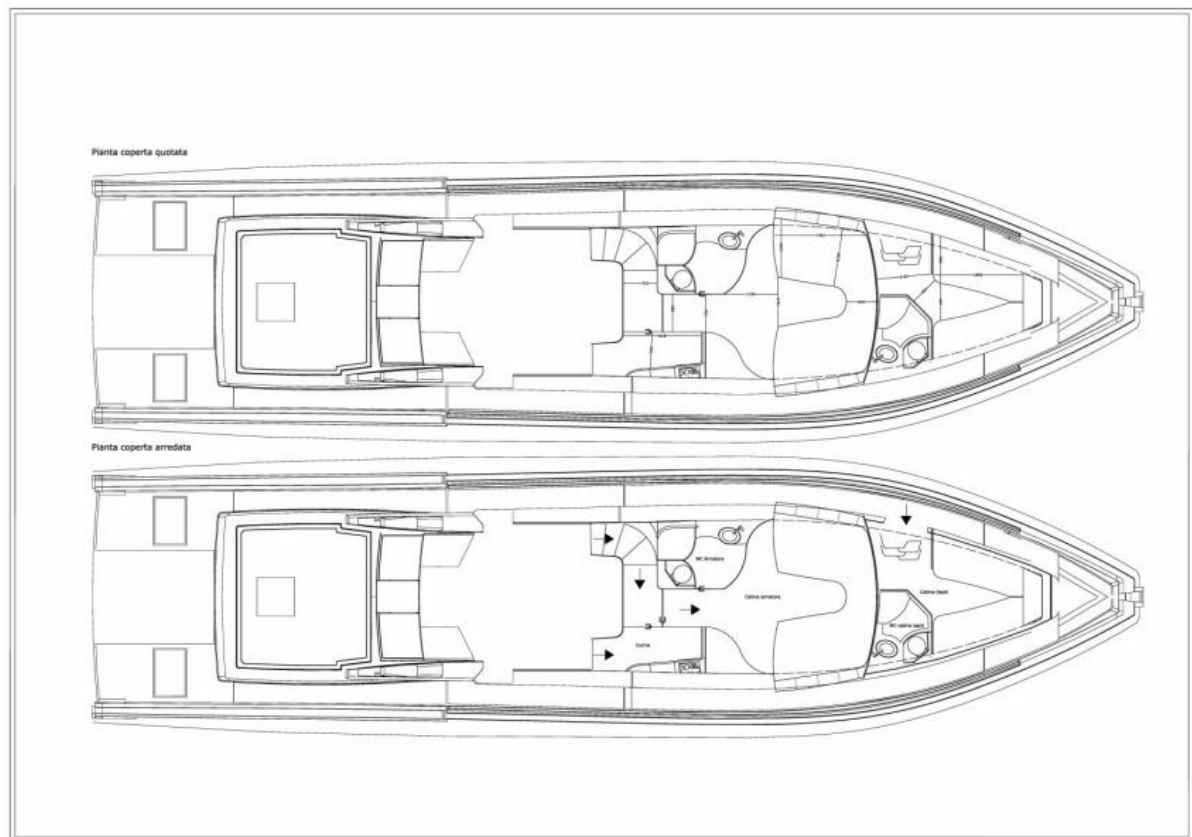




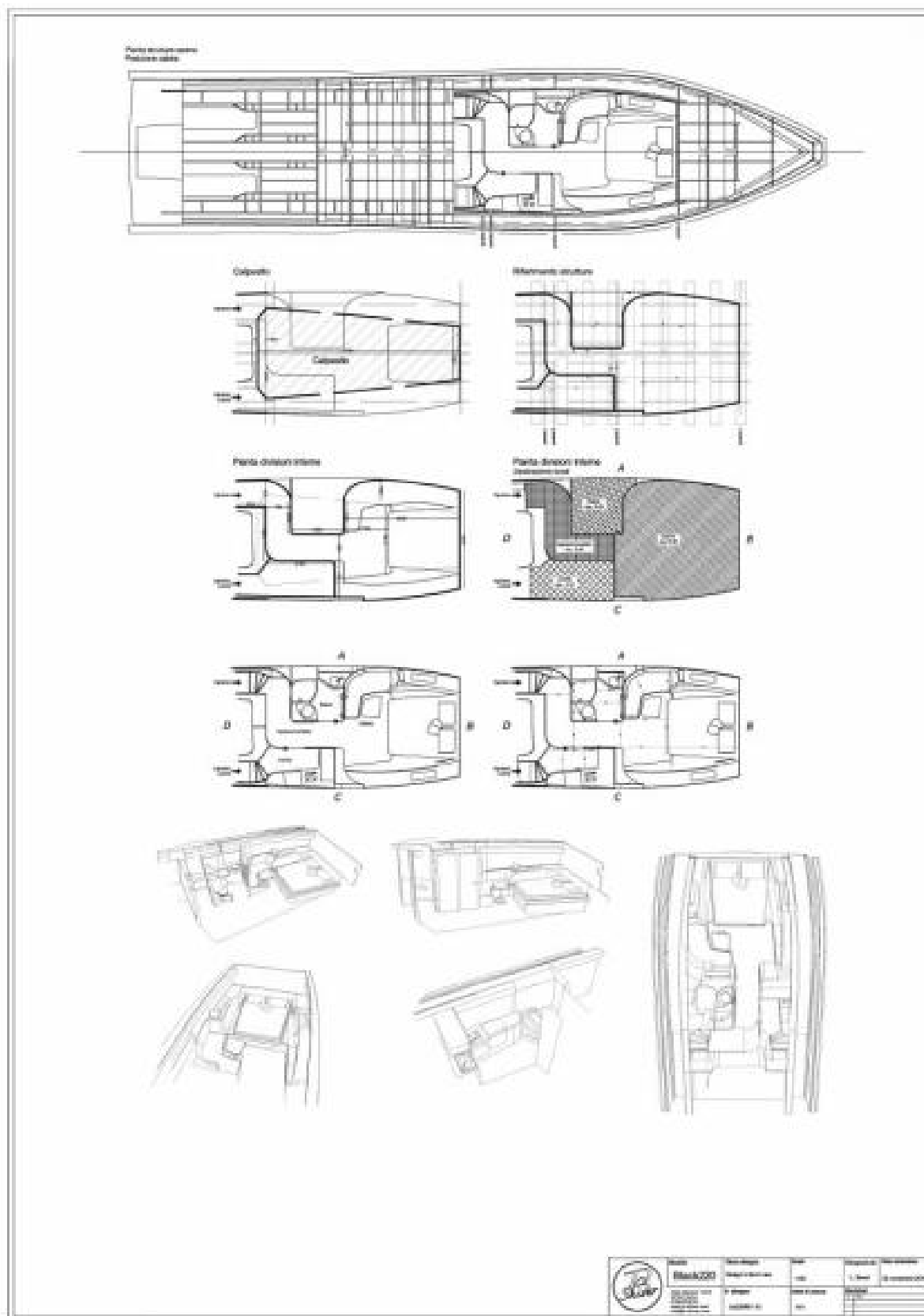








Layout



Layout