



21' (6.40m) 2001 Sea Ray Sundeck  
Atlantic City New Jersey United States



## OVERVIEW

|               |              |                |                 |
|---------------|--------------|----------------|-----------------|
| Manufacturer: | Sea Ray      | Hull Material: | Fiberglass      |
| Engines:      | 1 Mercruiser | Cruise Speed:  | 25              |
| Engine Model: | 300          | Max Speed:     |                 |
| Engine HP:    | 0            | Cabins/Heads:  | /               |
| Beam:         | 8' 6"        | Fuel Type:     | Gas/Petrol      |
| Max Draft:    | 3' 0"        | Fuel:          | 40 G (151.42 L) |
| Water:        |              |                |                 |

\$12,500



## Data Sheet

Category: Motor Yachts  
Subcategory: Bowrider  
Condition: Used  
Model Year: 2001  
Beam: 8'6" (2.59m)  
Max Draft: 3' (0.91m)  
LOA: 21' 6" (6.55m)

Cruise Speed: 25 Fuel Type: Gas/Petrol  
Deadrise: 19°  
Hull Material: Fiberglass  
Hull Shape: Deep Vee  
Hull Finish: White

Dry Weight: 3334 lbs  
Fuel Tank: 40 gal (151.42 liters)  
Builder: Sea Ray  
HIN/IMO: SERV52900101

## Engines/Generators

### Engine 1

Mercruiser  
300  
Inboard/Outboard  
Fuel: Gas/Petrol  
Year: 2001

## Summary/Description

This is the perfect entry level family boat with plenty of storage and seating along with an enclosed portable head. It has a beautiful outlay with roomier cockpit and beach platform. The bow cockpit has deep seating to keep everyone secure with arm rests and recessed grab handles

Sea Ray engineered the 210 Sundeck with the entry-level boater in mind. It has a boatload of amenities packed into a trailerable and affordable 22' package

Bowriders are the staple of the entry level market , but the Sundeck is more like a bowrider /deckboat hybrid. The best lounge seating for when the boat is

beached is atop the engine compartment in the main cockpit. The port section of the bench lifts up to reveal a stowage cockpit big enough to slide i a pair of skis

The Sundeck will have no problems pulling riders with the 300 hp Mercruiser engine. When topped out at 48 mph it handled a light chop and boat wakes much

better than ever suspected for a boat its size.

Sea Ray brings the keyless push button dash into its entire product line. The helm features standard Mercury Smartcraft guages that let you scroll through engine

functions with the push of a button along with digital readings on fuel burn and rpm.

Overall the boat is a very affordable and enjoyable for the budget conscious family



Midship



Starboard Side





Port Side



Stern



Helm Smart Gauges



Bow





Helm



Midship



Stern Seating

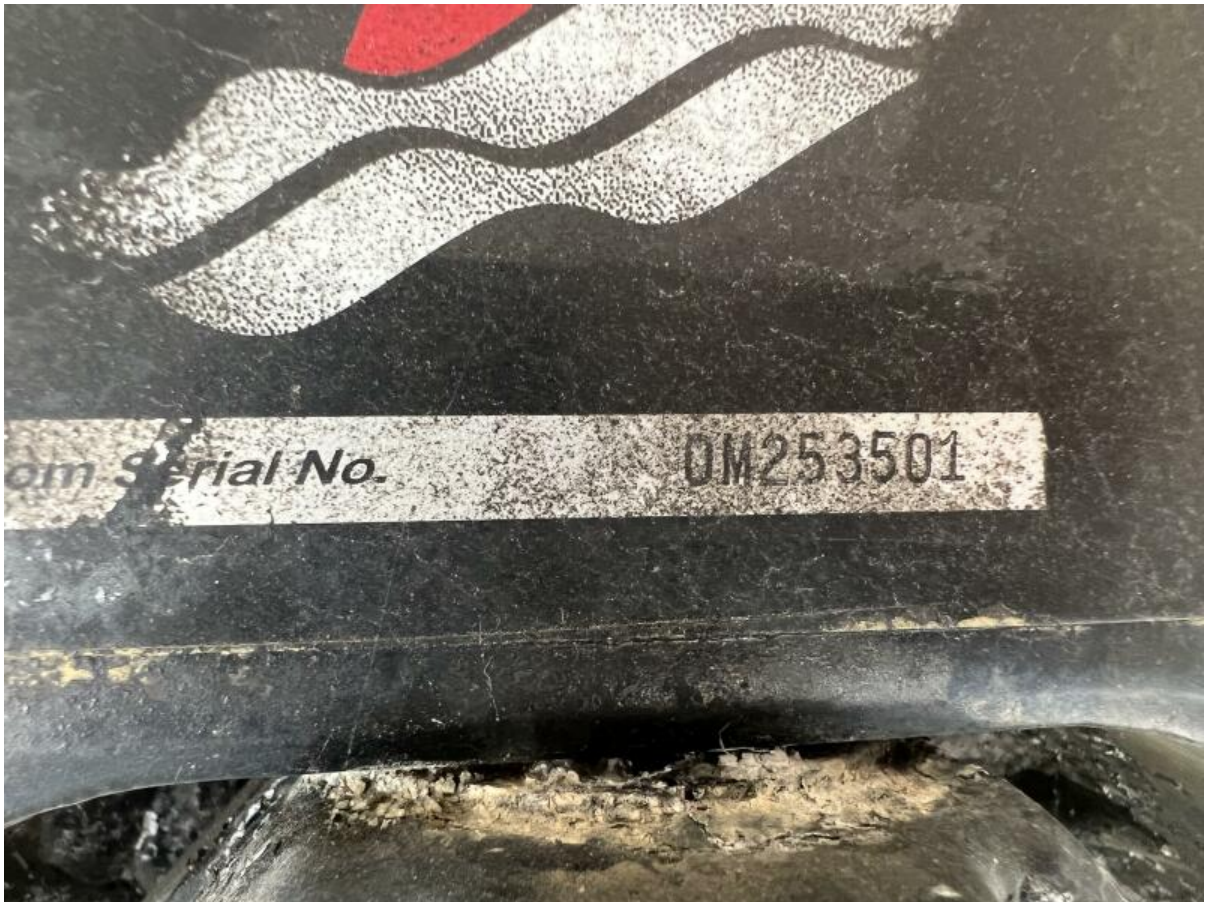


Head Storage





Serial Number



Outdrive



Stainless Prop