



Sally Lynn

42' (12.80m) 1972 Island Trader
Wilmington North Carolina United States



OVERVIEW

Manufacturer:	<i>Island Trader</i>		
Engines:	1 Perkins	Hull Material:	Aluminum
Engine Model:	T6-354	Cruise Speed:	8 Knots
Engine HP:	160	Max Speed:	10 Knots
Beam:	13' 3"	Cabins/Heads:	/
Max Draft:	4' 6"	Fuel Type:	Diesel
Water:	100 G (378.54 L)	Fuel:	1200 G (4542.49 L)

\$99,500



Data Sheet

Category: Trawlers

Condition: Used

Model Year: 1972

Refit Year: 2012

Beam: 13'3" (4.04m)

Max Draft: 4' 6" (1.37m)

LOA: 42' (12.80m)

Maximum Speed: 10 Knots

Cruise Speed: 8 Knots

Fuel Type: Diesel

Super Structure Material: Aluminum

Hull Material: Aluminum

Hull Shape: Fast Displacement

Hull Finish: paint

Fuel Tank: 1200 gal (4542.49 liters)

Fresh Water: 100 gal (378.54 liters)

Holding Tank: 35 gal (132.49 liters)

Engines/Generators

Engine 1

Perkins

T6-354

Inboard

160HP

119.31KW

Fuel: Diesel

Hours: 256

Hours Date: 02-09-2024

Year: 1972

Location: Middle

Generator 1

Westerbeke

5KW

Summary/Description

Sally Lynn has been well maintained, completely refit and upgraded inside and out. With rugged aluminum plate hull and decks, 1200 gallon fuel capacity and a fuel efficient 160 hp Perkins diesel, she is ready for long range exploration. Please see below for all the details and photos

Sally Lynn is an excellent example of the 1972 Island Trader 42 long range cruiser. She features a 160hp Perkins T6-354 diesel engine, rebuilt in 2009, bow-thruster, a 5kw Westerbeke diesel generator and holds 1200 gallons of fuel. Sally Lynn is constructed of marine grade aluminum plate with a strength to weight ratio uncommon in vessels of this size. Sally Lynn has been very well maintained, refit and upgraded. In 2012 the hull, decks were blasted to bare aluminum and inspected by USCG. The previous year a complete interior re-fit/re-build was done. Refit and upgrades continued from 2015-2018 with new refrigerator, Belville smart oven, Kuma water-heater, teak decking added, new V-drive and finally in 2018 the SeaKeeper stabilizer was added. Sally Lynn is available to see by appointment in Wilmington NC. Please see the full specs below for all the details photos and video.

Island Trader Vessel Walk-Through

Boarding Sally Lynn is facilitated by built in steps on either side of the cockpit. The cockpit is spacious and secure with high bullworks. The cockpit sole and engine box have been finished with solid teak. Up one step the side-decks are easy to navigate. The rugged build of Sally Lynn is evident in the robust solid aluminum decks, bullworks and railings. The foredeck is spacious and secure as well. The windlass is elevated for ease of use.

Sally Lynn's sundeck and flybridge are accessed by a ladder from the cockpit or the interior companionway. The large sundeck is clear of obstructions except for the bunks installed to hold a tender. There is a sturdy davit to bring a tender aboard. The flybridge has a bimini top and is enclosed with clear vinyl on three sides. The upper helm has full gauges and controls mounted on a beautiful teak console. There is seating for 4 on 2 upholstered bench seats and a helm chair. Visibility is excellent in all directions.

Going in the teak door from the cockpit, you enter the Main Cabin with a spacious, well appointed Salon. a large Galley. There is new custom vinyl floor runners which can be removed and hosed off for easy cleaning. The remaining sole is finished in beautiful teak. To port there is a large L-shaped sofa with teak table. Large windows with privacy screens provide a panoramic view and lots of natural light. The well organized Galley is just forward of the Salon. Large solid surface counters on starboard side have a large 2 basin sink, 3 gas burner stove and a Breville electric smart oven and plenty of storage space, above and below the counter. To port there is an apartment size refrigerator/freezer and microwave oven. The head is to port aft of the refrigerator and features a Vacu-Flush toilet, a separate shower teak and holly sole, and lots of storage.

Forward of the Galley there is a foyer with ladder to the flybridge companionway and 2 steps up to the Pilot-House with sliding doors to port and starboard. a comfortable bench-seat/crew birth and a large teak console for the lower helm. There is good visibility in all directions and lots of natural light and ventilation. As with the Main cabin, the headliner, bulkheads and teak & holly sole are all in like new condition.

The forward cabin is down a spiral staircase and is also beautifully fitted with teak & holly sole. There is a hanging locker to port and queen size V-Birth forward. There is additional storage under the V-birth. Aft of the V-birth there is access to the mechanical compartment which houses the SeaKeeper stabilizer, generator, pumps and water-heater.

Island Trader 42 Mechanical & Electrical Equipment

- 160hp Perkins T6-345 diesel engine, rebuilt 2009 256 hrs since rebuild
- Westerbeke 5kw generator
- SidePower bow-thruster
- 1 Dometic 16,000 BTU HVAC forward
- 1 MarineAir 16,000 BTU HVAC in the main cabin
- Vacuflush head
- Kuma 6gal. waterheater
- Fresh water and bilge pumps
- 2 30amp shore-power cords and receptacles
- Xantrex inverter charger
- Guest 30 amp charger for generator
-

Island Trader 42 Hull Deck & Refit Details

- 2009 Rebuild Perkins engine
- 2011 Interior refit. Walls removed to expose and inspect bare metal and studs. New, re-designed galley, head and salon.
- 2012 Exterior refit. Hull and deck blasted bare, inspected by USCG and repainted.
- 2015 New refrigerator/freezer
- 2016 Teak installed in cockpit and on engine box
- 2017 New Walter V-drive installed
- 2018 New water tanks and water heater installed. New SeaKeeper stabilizer added
- 2022 New Breville smart oven added
- 2/07/2024 Approximately 700 gallons of fuel on board



1002 Sally Lynn 1972 Island Trader 42



1004 Sally Lynn



1006 Sally Lynn



1008 Sally Lynn



1010 Sally Lynn



1012 Sally Lynn



1014 Sally Lynn Lazarette



1016 Sally Lynn Sidedeck



1018 Sally Lynn Sidedeck



1020 Sally Lynn Sidedeck



1022 Sally Lynn Foredeck



1024 Sally Lynn Foredeck



1026 Sally Lynn Windlass



1028 Sally Lynn Sidedeck



1030 Sally Lynn Sundeck



1032 Sally Lynn Flybridge



1034 Sally Lynn Upper Helm



1035 Sally Lynn Flybridge



1036 Sally Lynn Upper Helm Controls



1038 Sally Lynn Upper Helm Gauges



1040 Sally Lynn Upper Helm Stabilizer Controls



1042 Sally Lynn Companionway



1044 Sally Lynn Companionway



1046 Sally Lynn Davit



1050 Sally Lynn Salon



1052 Sally Lynn Salon Aft



1054 Sally Lynn Galley



1056 Sally Lynn Galley



1058 Sally Lynn Galley Stove



1060 Sally Lynn Smart Oven



1062 Sally Lynn Microwave Oven



1064 Sally Lynn Head



1066 Salley Lynn Shower



1068 Sally Lynn Head



1070 Sally Lynn Companionway



1072 Sally Lyn Pilot House



1073 Sally Lynn Lower Helm



1074 Sally Lynn Lower Helm



1076 Sally Lynn Lower Helm Controls



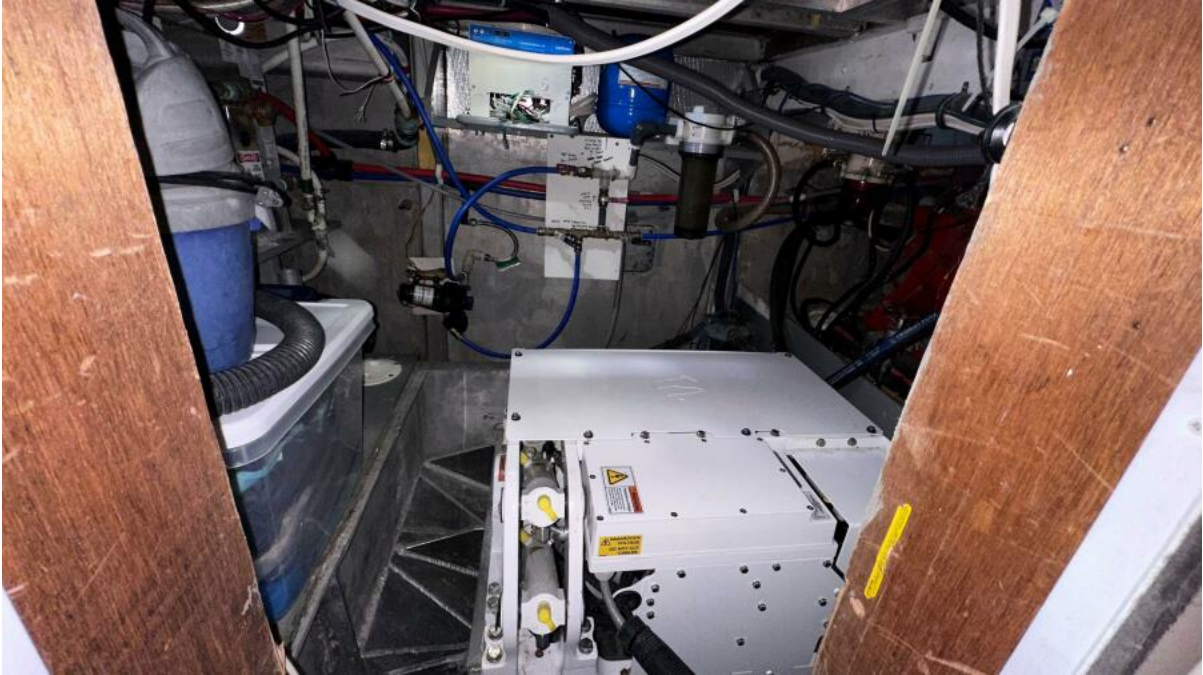
1078 Sally Lynn Electrical Panel



1080 Sally Lynn Foreward Cabin



1082 Sally Lynn V Birth



1090 Sally Lynn Mechanical Compartment



1091 Sally Lynn Mechanical Compartment



1092 Sally Lynn Generator



1094 Sally Lynn SeaKeeper Stabilizer



1096 Sally Lynn Engine Compartment



1098 Sally Lynn Engine



1100 Sally Lynn Engine