



X80

80' (24.38m) 2024 Princess X80
West Palm Beach Florida United States



OVERVIEW

Manufacturer: *Princess*

Engines:	2 MAN	Hull Material:	Fiberglass
Engine Model:	V12	Cruise Speed:	
Engine HP:	1900	Max Speed:	
Beam:	19' 11"	Cabins/Heads:	5 / 6
Max Draft:	"	Fuel Type:	Diesel
Water:	370 G (1400.6 L)	Fuel:	1717 G (6499.55 L)

Call for Price



Data Sheet

Category: Motor Yachts
Condition: New
Model Year: 2024
Beam: 19'11" (6.07m)
LOA: 82' 3" (25.07m)
Cabins: 5
Single Berths: 2
Double Berths: 4
Heads: 6

Crew Cabins: 1
Crew Sleeps: 3
Fuel Type: Diesel
Hull Material: Fiberglass

Fuel Tank: 1717 gal (6499.55 liters)
Fresh Water: 370 gal (1400.6 liters)
HIN/IMO: X80XXX

Engines/Generators

Engine 1

MAN
V12
1900HP

Engine 2

MAN
V12
1900HP

Summary/Description

For Sale

Available for Winter 2023-2024 Delivery

Following in the wake of the X95, the X80 is not trying to fit into a niche that already exists. She is at once everything you know, yet nothing you recognize. The X80 has been developed to offer a unique boating lifestyle, one that is tailored to how each owner wants to use their yacht. The X80 is at once an open-concept dream, whilst retaining a host of distinct spaces, creating boundaries without walls. Boasting class-leading outdoor space, she has been painstakingly designed to offer the most versatile and accommodating experience, while keeping design and style at the forefront. Princess Yachts' long-standing naval architect, Olesinski, has partnered with Italian design heavyweights Pininfarina to create the ultimate in avant-garde yacht design. The X80 makes a statement wherever she goes, and her muscular yet timeless lines give her an air of perpetual motion, always ready to start her next adventure. The X Class may be ground-breaking, but they still remain a Princess. Beautiful design, flawless interior fit out and an unrivalled aftersales experience are a staple across the fleet, and the X80 is no different. The X80 'Superfly' is a true Princess: she is always moving forward and shattering expectations.

Available for co-brokerage contact Mike O'Hara at 609-661-2114

Standard Options

DECK FITTINGS

- Teak-laid transom platform, transom steps, cockpit deck, stairway to flybridge, side decks, steps to foredeck, flybridge aft sun deck and foredeck seating walkthrough areas
- Reversible hydraulic anchor winch with foredeck, main helm and flybridge controls
- Stemhead roller with automatic anchor launch and retrieve
- Twin anchor system incorporating a Primary anchor - 80kg Galvanised Claw anchor with 100m of 14mm galvanised chain and a Secondary anchor - 50kg Galvanised Claw anchor with 70m of 14mm galvanised chain
- Twin electric sternline mooring winches
- Deck hatch access to chain locker, rope locker and engine room
- Freshwater deck/anchor wash (with both fore and aft deck outlets)

- **Stainless steel bow, nose and stern fairleads**
- **Stainless-steel bow spring cleats (1 pair, port & starboard)**
- **Stainless-steel stern spring cleats (1 pair, port & starboard)**
- **Stainless-steel guard rails to foredecks**
- **Stainless steel flybridge handrails with glazed panel**
- **Stainless steel handrails to main deck side decks**
- **Foredeck escape hatch**
- **Foredeck U-shaped seating area with removable coffee table (2x legs to vary height)**
- **Twin coach roof lockers for storage of fenders, ropes and cushions**
- **PVC rubbing band with stainless-steel insert**
- **LED deck level lighting**
- **Full set of IMCO navigation lights**
- **Riding light**
- **Twin beam searchlight with remote controls**
- **Stern docking lights**
- **Twin electric horns**
- **Fuel and water fillers**

AFT COCKPIT AND BATHING PLATFORM

- **Self-draining**
- **Upholstered U-shaped seating with storage below (for life-rafts)**
- **Teak folding dining table paired with 3 dining chairs**
- **LED overhead and deck level lighting**
- **Stainless-steel handrails**
- **Second station controls portside including thruster controls and emergency engine stop**
- **Remote control 4.5m telescopic passerelle with automatic folding handrails (1.2m overhang)**
- **Watertight pantograph door giving access from bathing platform into crew area/engine room**
- **Engine room to cockpit escape hatch**
- **Stern lazarette and locker with provision for 2x Seabob F5/F5 S/F5 SR storage & charging**

- Wash hand basin with mixer tap to portside
- Starboard locker containing remote fuel cocks, manual bilge pump with valve chest and manual controls for automatic fire extinguishers
- Integral stairway to flybridge with teak step treads
- Twin transom gates leading to bathing platform
- Electro-hydraulic teak laid raise/lower bathing platform (550kg SWL)
- Retractable bathing ladder (manual) in side of bathing platform
- Hot and cold transom shower
- 220/240v shore support inlet
- Canvas cockpit cover

HELM

- Enclosed pilot house with central leather upholstered electric seat with fore, aft and height adjustment
- L-shaped companion seating to port with deployable side table and optional navigator seat to starboard.
- Two stage sliding doors to fully enclose or open helm to skylounge area
- Instrument console with display incorporating engine instruments, CCTV, fuel gauges, alarms and rudder position indicator
- Helm position instrument and controls console
- power-assisted electro-hydraulic steering
- adjustable steering wheel
- high-speed magnetic compass
- electronic engine controls
- bow thruster control
- anchor winch remote control
- colour radar (with scanner) and GPS/ chart plotter (twin 19" displays)
- autopilot
- speed and distance log
- echo sounder with alarm
- VHF with DSC R/T with intercom
- remote control dual searchlight

- horn button (to operate twin electric horns)
- audible and visual alarm for bilge pumps
- engine room fire extinguisher warning system
- Intercom to galley and crew area
- Automatic fog horn with loudhailer
- Chart storage
- Drink holders
- Toughened glass screen (clear for night vision) with windscreen de-mist system
- Windscreen wipers with freshwater windscreen wash
- Black mesh sunscreens
- Bilge pump controls with visual pump running warnings
- 24v and 240v electrical control panel
- Riding light, helm and navigation light control switches
- On/Off & dimmable LED overhead/concealed lighting (24V) with night lighting & scene selection
- Watertight pantograph door giving direct access to starboard side foredeck walkthrough area
- 'V' groove planked timber flooring
- 220/240v outlets (1)
- USB connection points (2)

SKY LOUNGE

- Sofa & coffee table
- 55" 4K UHD LED TV on rise and fall
- UHD DVD Blu-ray system with Naim Uniti Atom audio system with speakers (2)
- Sideboard with fridge and storage
- Access stairway to main deck
- Stainless steel opening glass patio doors to aft deck area
- USB connection points (2)
- On/Off & dimmable LED overhead/concealed lighting (24V) with scene selection
- Tinted panoramic toughened side windows

- Glazed roof panels with powered blinds and slat feature
- Manual roller blinds to all side windows
- Manual curtains to aft door, stowed to port
- 'V' groove planked timber flooring with rug inlay
- 220/240v outlets (1)
- USB connection points (2)

FLYBRIDGE AND FLYBRIDGE FOREDECK

- Flybridge foredeck with twin sunbeds with the option of adjustable backrests for seat conversion
- Standard layout is Flybridge aft deck area with two L-shaped sofas & side tables. Port side L-shaped sofa can be adjusted to face forward or aft.
- Dining table with chairs to accommodate 8 persons (10 for 5 cabin layout)
- Naim Uniti Atom audio system with waterproof speakers (2) to aft end of flybridge
- Clear view hatch to aft cockpit
- Access stairway to aft cockpit
- Stainless-steel handrails with glass balustrade to aft of flybridge deck
- Storage lockers port/starboard
- Aft servery unit with sink and tap
- LED overhead and deck level lighting
- Radar mast
- Twin matching whip aerials for VHF R/T and radio
- Covers to exterior furniture where appropriate
- USB connection points (2)

DECK SALOON

- Large L-shaped sofa to port with storage below
- Sofa to starboard with storage below
- Coffee table
- 55" 4K UHD LED TV on rise and fall.

- DVD Blu-ray system and Naim Uniti Atom audio system with speakers (4)
- Servery unit with integrated drinks refrigerator and icemaker
- Glasses storage sideboard
- Panoramic tinted toughened glass windows port and starboard
- Triple stainless-steel framed cockpit doors
- Access stairway to lower accommodation
- Access stairway to skylounge
- On/Off & dimmable LED overhead/concealed lighting (24V) with scene selection
- 220/240v outlets (2)
- USB connection points (4)
- Manual roller blinds to all outboard windows
- Manual curtains on wave track to aft patio doors, stowed to port
- Fitted carpet
- Onboard ethernet router & 4G/5G internet modem

GALLEY

- Granite/quartz worktop
- Open bar/servery layout with powered electric screen to fully enclose galley and sliding door
- Miele 4-zone Induction hob
- Hob extractor
- Miele combination microwave/ convection oven with grill
- 1.5-bowl stainless-steel sink with mixer tap
- Chopping board & storage
- Full height refrigerator/deep freezer
- Dishwasher
- Icemaker
- Waste bin
- Drawers and storage cupboards
- Manual roller blinds to window

- Pantograph door to starboard side deck
- LED overhead and task lighting (24V)
- 220/240v outlets (4)
- 'V' groove planked timber flooring
- Access to deck saloon via sliding door
- Access to dinette via sliding door

FORWARD DINING AREA

- Dining table with aft facing dinette seating and dining chairs (4)
- Stone topped Sideboard unit with crockery, glassware and general storage
- Entertainment unit with Naim Uniti Atom audio system and speakers (2)
- 220/240v power outlets (2)
- USB connection points (2)
- On/Off & dimmable LED overhead/concealed lighting (24V) with scene selection
- Full-height panoramic tinted toughened glass port window, with manual recessed roller blinds
- Powered SHY roller blinds to forward glazing
- Manual roller blinds to outboard windows
- Fitted carpet

DAY TOILET

- Electric freshwater toilet
- Wash hand basin and worktop in thermoformed Solid Surface
- Storage cupboard
- Manual tension venetian blind
- Solid Surface flooring

ACCOMMODATION

- All cabins and bathrooms feature opening portholes and air conditioning
- All cabins feature 220/240v powerpoints

- All en-suites feature 240v shaver points

MASTER STATEROOM

- Large double bed with bedside tables and drawers below
- Dressing area with full length mirror, hanging, shelf and drawer storage
- Built-in safe
- Port side dressing table with integrated mirror, chair, storage drawers and cupboards
- Starboard side sofa with storage units
- 55" 4K UHD LED TV
- UHD DVD Bluray system connected to Naim Uniti Atom audio system with speakers (2) and subwoofer
- Panoramic windows including opening portholes
- Roman blinds and manual sheer roller blinds to hull windows
- On/Off & dimmable LED overhead/concealed lighting (24V) with scene selection
- Individual berth lights (2)
- 220/240v outlets (2)
- USB connection points (4)
- Fitted carpet

EN-SUITE BATHROOM

- Twin washbasins and worktop in thermoformed Solid Surface
- Mirror
- Storage lockers
- Electric freshwater Toilet and option of separate bidet
- Shower compartment with automatic pump out
- Extractor fan
- Heated towel rail
- Window with opening porthole
- Manual tension venetian blind
- LED overhead and concealed lighting (24V)

- Bathroom accessories
- Solid surface flooring

FORWARD STATEROOM

- Large double bed with bedside tables and drawers below
- Built-in safe
- Twin double wardrobes
- Port side dressing table with integrated mirror, stool & storage drawers
- 43" 4K UHD LED TV
- UHD DVD Blu-ray system connected to Naim Uniti Atom audio system with speakers (2) and subwoofer
- Panoramic windows including opening portholes
- Roman blinds and manual sheer roller blinds to hull windows
- On/Off & dimmable LED overhead/ concealed lighting (24V) with scene selection
- Individual berth lights (2)
- 220/240v outlets (2)
- USB connection points (4)
- Fitted carpet

EN-SUITE BATHROOM

- Washbasin and worktop in thermoformed Solid Surface
- Mirror
- Storage lockers
- Electric freshwater Toilet
- Shower compartment with automatic pump out
- Extractor fan
- Window with opening porthole
- Manual tension venetian blind
- LED overhead and concealed lighting (24V)
- Bathroom accessories

- Solid surface flooring

STARBOARD GUEST CABIN

- Double bed with drawers below
- Bedside table
- Dressing table with stool
- Wardrobe with shelves
- Mirror
- Storage lockers
- Window with opening portholes
- Roman blinds
- On/Off & dimmable LED overhead/ concealed lighting (24V) with scene selection
- Individual berth lights
- 220/240v outlets (1)
- USB connection point (2)
- Fitted carpet

EN-SUITE BATHROOM

- Electric freshwater toilet
- Washbasin and worktop in thermoformed Solid Surface
- Mirror
- Storage lockers
- Shower compartment with automatic pump out
- Extractor fan
- Windows with opening porthole
- Manual tension venetian blind
- LED overhead and concealed lighting (24V)
- Bathroom accessories
- Solid surface flooring

PORT GUEST CABIN

- Two single beds with drawers below
- Bedside table
- Wardrobe with shelves
- Mirror
- Storage lockers
- Window with opening portholes
- Roman blinds
- On/Off & dimmable LED overhead/concealed lighting (24V) with scene selection
- Individual berth lights
- 220/240v outlets (1)
- USB connection point (2)
- Fitted carpet

EN-SUITE BATHROOM

- Electric freshwater toilet
- Washbasin and worktop in thermoformed Solid Surface
- Mirror
- Storage lockers
- Shower compartment with automatic pump out
- Extractor fan
- Windows with opening porthole
- Manual tension venetian blind
- LED overhead and concealed lighting (24V)
- Bathroom accessories Solid surface flooring

LOBBY / PASSAGEWAY AREA

- Linen cupboard below companionway stairs
- Space for optional combination washer/dryer below companionway stairs

- On/Off & dimmable LED overhead/concealed lighting (24V) with scene selection
- Fitted carpet
- Manual roller blind to window

CREW QUARTERS

N.B. All lower crew furniture is in the customer selected timber finish, with Carrara White Solid Surface (gloss finish) bathroom vanity unit tops and Carrara White Solid Surface (satin finish) bathroom floors

CREW CABIN PORT

- Twin single beds with storage below
- Wardrobe with shelf
- Mirror
- Storage lockers
- Opening portholes and venetian blind
- LED overhead lighting (24V)
- Individual berth light
- 220/240v outlets (1)
- USB Connection points (2)
- Fitted carpet

CREW CABIN STARBOARD

- Single bed
- Wardrobe with shelf
- Storage lockers

CREW BATHROOM

- Electric freshwater toilet
- Washbasin with Carrara White (gloss finish) solid surface worktop

- **Mirror**
- **Storage lockers**
- **Shower compartment with automatic pump out**
- **Extractor fan**
- **LED overhead lighting (24V)**
- **Bathroom accessories**
- **Solid Surface flooring in Carrara white(satin finish)**

CREW AREA

- **Access from transom door**
- **Access to engine room**
- **Storage space, cupboards and lockers**
- **Separate washing machine and separate tumble dryer. For all option scenarios including when Glendinning equipment is specified**
- **LED overhead lighting (24V)**
- **Non slip safety flooring**
- **Mirror**
- **Opening porthole and venetian blind**
- **Individual berth light (where fitted)**
- **220/240v outlets (2) USB connections points (2)**

POWER AND DRIVE SYSTEMS

- **Engine room soundproofed**
- **High volume air intakes**
- **Engine room extractor fan with electronic time delay**
- **Engine exhaust silencers and water-cooled exhausts**
- **Forward and aft engine room bulkheads integrally bonded including acoustafoam layers**
- **Engines flexibly mounted**
- **Automatic fire extinguisher with remote override control**

- Automatic and manual bilge pumps
- Propeller shafts in Marinemet
- 5-bladed propellers in nickel aluminum bronze
- High speed balanced rudders
- Cathodic protection for sterngear
- Stern gear, engines, fuel tank fillers, etc all electrically bonded
- LED Engine room lighting
- Engine room access from transom and port side deck via crew area and from cockpit deck
- Power-assisted electro-hydraulic steering system
- Electronic engine and gear shift controls
- Bow thruster with dual-station controls
- Fresh water supply point in engine room
- Dripless self-aligning shaft seals

ELECTRICAL SYSTEMS

24 Volt:

- 4 x heavy duty batteries for engine starting
- 6 x heavy duty auxiliary batteries
- Battery link facility with remote control at helm position
- Both battery banks are charged using a voltage sensitive relay that parallels both battery banks when a charging source is present
- 2 x 100-amp 24v float battery chargers • Remote battery isolator control switches at main switch panel position
- Circuit breakers on all circuits
- 24v to 12v converters for certain navigation and radio circuits
- 24v to 240v/50Hz inverter for saloon a/v, galley fridge and optional telephone system
- Galvanic isolation system

220/240 Volt:

- European specification: Up to 2 x 27.5kW @ 50Hz diesel generators in own sound shields, water cooled and with specially silenced exhaust systems and with remote operation from main control panel

(single generator as standard)

- **USA specification: Up to 2 x 29kW @ 60Hz diesel generators in own sound shields, water cooled and with specially silenced exhaust systems and with remote**

operation from main control panel (single generator as standard)

- **220/240v shore power inlet**
- **Shore power/generator change over control operated from main control panel**
- **Polarity check system**
- **Earth leakage safety trip, circuit breakers on all circuits**
- **Power points (240v) in all cabins and living areas, helm position and galley**
- **240v shaver points in washrooms**
- **3kW immersion heater for fresh water**
- **CCTV system with camera in aft cockpit and two fixed cameras in engine room,**
displayed on helm MFDs

BÖNING SYSTEM

- **Engine instrumentation & monitoring**
- **Digital boat alarms**
- **Lighting controls**
- **Control and monitoring of AC/DC electrical systems**

FUEL SYSTEM

- **Main fuel tank with fuel polishing transfer system to day tank giving a total 7000 litres of fuel capacity (8500 litres if long range fuel tank is specified).**
- **Fuel fillers to port and starboard**
- **High capacity duplex fuel filters/water traps with integral changeover valves and water sensors connected to alarms at helm position**
- **Remote fuel isolation controls in cockpit locker for main engines and generators**
- **Fuel gauges at helm position**

AIR CONDITIONING SYSTEM

- **Air Conditioning/heating reverse cycle**
- **204,000 BTU fan capacity with 144,000 BTU chiller capacity suitable for temperatures to 40°C (tropical) incorporating a windscreen demist facility.**
- **The standard generator is suitable. Outlets in all areas and any concentrations of AV equipment (if required)**

WATER SYSTEM

- **Fresh water tanks giving 1500 litres capacity plus 200 litres hot water calorifier**
- **Automatic water pump with filter**
- **Water level gauge**
- **Deck filler**
- **Pump circuit breaker at main switch panel**
- **Electric freshwater toilet system linked to 500 litres holding tank, content gauge and low noise electric overboard discharge, with macerator backup system as well as dockside discharge system**
- **Grey water tank to take waste water from sinks/showers, washing machine(s) and dishwasher**

BILGE PUMPS

- **Automatic/manual override electric bilge pumps in engine room, rudder area and forward accommodation**
- **High capacity manual bilge system with suction points in the same areas**
- **Electric bilge pumps have controls and warning lights with audible alarm at helm position**

EXTINGUISHERS / FIRE CONTROL SYSTEMS

- **Automatic engine room fire extinguisher system (with manual override) and warning system at helm position providing automatic shutdown of engines, generators and ventilation fans**
- **Automatically operated engine room air shutoff system**
- **Hand operated fire extinguishers in all guest cabins, galley, crew quarters and flybridge**

OTHER STANDARD EQUIPMENT

- **Ensign staff**
- **Fenders (8)**

- Mooring warps (4)
- First Aid kit
- Set of towels (8 large, 8 hand), NB : 10 sets with 5 cabin layout
- Bed cover supplied to all cabins (except crew cabin)
- Complete set of Lucrezia crystal glassware (8 settings consisting of tumbler, highball and wine glasses)
NB : 10 settings with 5 cabin layout
- Set of Sous Le Soleil crockery (8 settings consisting of plate, cake plate, dessert plate, bowl, cup & saucer) NB : 10 settings with 5 cabin layout
- Set of stainless steel cutlery (8 settings of David Mellor "Paris" cutlery 7 pieces) NB : 10 settings with 5 cabin layout
- Tool kit
- Boat hook
- Owner's manual and engine manual Ship's document case

FINISHES

- Teak-laid decks to all external deck areas (including flybridge)
- V grooved planked timber floor to galley, skylounge and wheelhouse
- Furniture in choice of Alba oak, Rovere oak in satin finish as standard. Silver Oak or walnut with satin or gloss finishes available as an option.
- Solid Surface in all bathroom suites in guest accommodation (including day head)
- Thermoformed Solid Surface wash hand basin counter tops in all bathroom suites and day head
- Galley worktop in granite or quartz
- Choice of high-quality carpets and fabrics from extensive range
- Curtains, blinds or sunscreens to all windows and portholes
- Crew cabins have fitted carpet, Crew bathrooms have Solid Surface floors and countertops
- Non slip safety flooring to crew mess and passageway

US SPECIFICATIONS

120/240v 60hz electrical system throughout including bespoke US socket arrangement

Anodes, spare set (hull, trim tab, and hydraulic platform)

Central vacuum (2)

Clear bowl for generator fuel/water separator

Cooktop, 240v/60hz, in place of standard

Dishwasher, 120v/60hz, in place of standard

Energy Solutions 24kWA (100 Amp) Isoboost transformers

(2) Exhaust clamps in stainless steel as per ABYC standards

Exterior Upholstery in Reticulated Foam

Gelcoat - 1 spare kg hull/superstructure gelcoat

Glendinning Cablemasters - 2x 100 Amp

Hubbell Shore Cords, 2x 100 Amp

JL Audio speakers (4 x 7.7") & subwoofer on flybridge

Laundry - combination washer/vented dryer in crew, 120v/60hz, in place of standard

Microwave, 120v/60hz, in place of standard in crew mess area

Microwave, 120v/60hz, in place of standard in galley

Oven, 240V/60hz, in place of standard

Pillow package and bed linens (not including crew)

Princess Yachts America HIN tag

Propeller hubs drilled and tapped to suit prop puller

Teak decking to be 8mm thick in place of standard

Disclaimer

The Company offers the details of this vessel in good faith but cannot guarantee or warrant the accuracy of this information nor warrant the condition of the vessel. A buyer should instruct his agents, or his surveyors, to investigate such details as the buyer desires validated. This vessel is offered subject to prior sale, price change, or withdrawal without notice.

SPECIFICATION DISCLAIMER

This specification is subject to change. the right is reserved to make changes, without notice, at anytime, in equipment, materials, and specifications. Photos may show some optional equipment.

Photos shown here are stock photography and not necessarily representative of the the decor and equipment specified.

Generator and dockside service are not intended to supply power for all standard and optional equipment. Load must be limited to generator output rating and available dockside power.

Variation in wood grain and color are natural and cannot be controlled in manufacturing process.

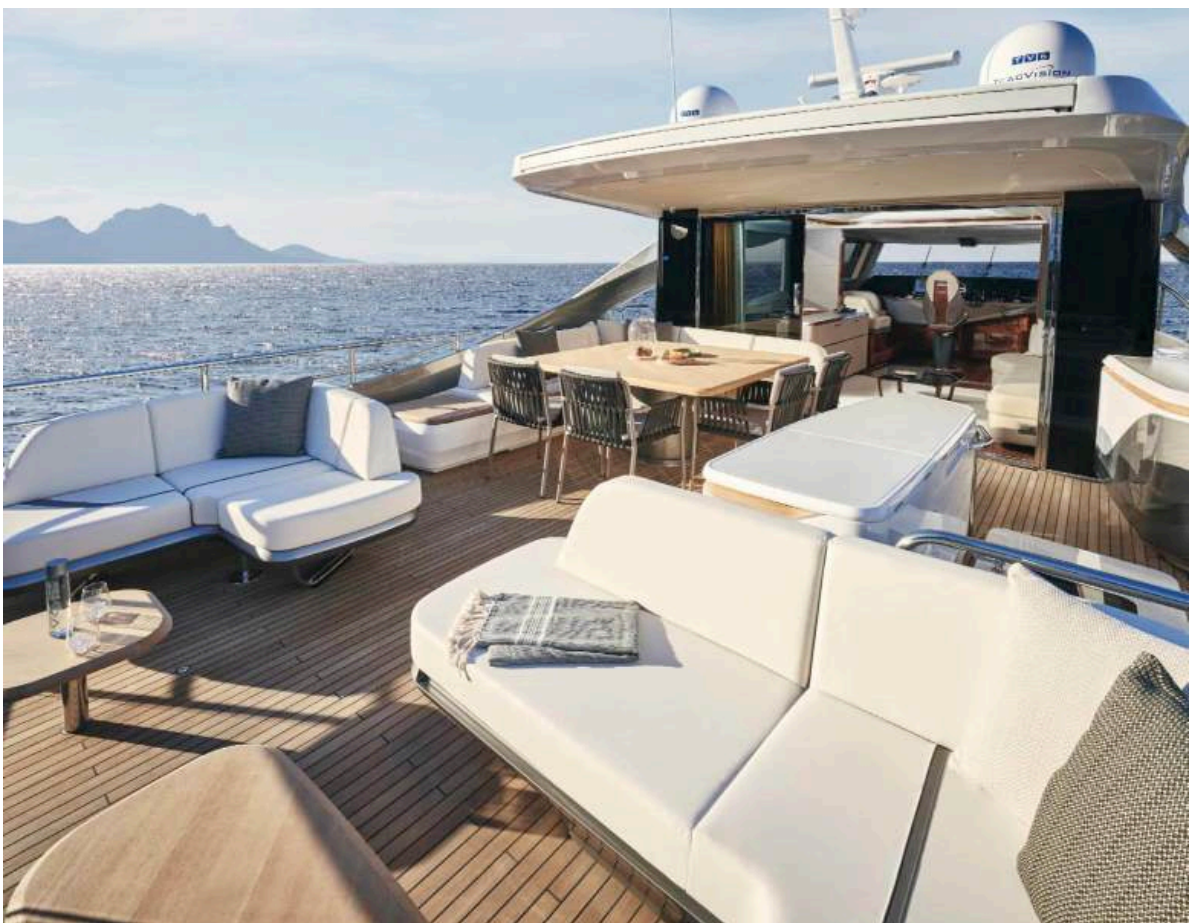






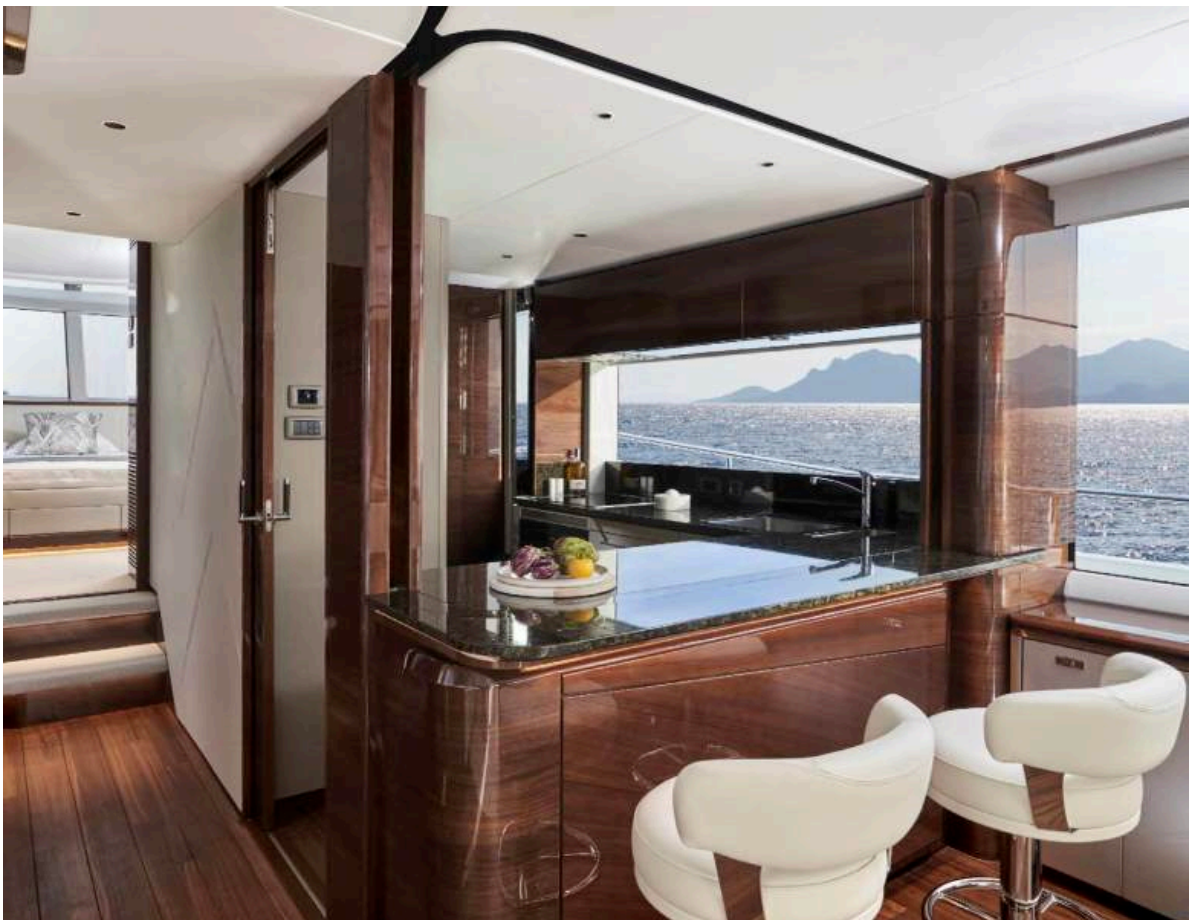






Skybridge





Galley





Salon



Skylounge



Lower Deck Master



Optional Main Deck Master















