



007

32' (9.75m) 2022 Targa 32
Newington New Hampshire United States



OVERVIEW

\$592,000

Manufacturer:	Targa		
Engines:	1 Volvo Penta	Hull Material:	Fiberglass
Engine Model:	D6-440/DPI	Cruise Speed:	
Engine HP:	440	Max Speed:	
Beam:	11' 1"	Cabins/Heads:	/ 1
Max Draft:	3' 6"	Fuel Type:	Diesel
Water:	80 G (302.83 L)	Fuel:	220 G (832.79 L)



Data Sheet

Category: Express Cruiser
Condition: Used
Model Year: 2022
Beam: 11'1" (3.38m)
Max Draft: 3' 6" (1.07m)
LOA: 35' 4" (10.77m)
Heads: 1

Fuel Type: Diesel
Hull Material: Fiberglass

Dry Weight: 13800 lbs
Fuel Tank: 220 gal (832.79 liters)
Fresh Water: 80 gal (302.83 liters)
Holding Tank: 40 gal (151.42 liters)
HIN/IMO: CYS32278D222

Engines/Generators

Engine 1

Volvo Penta
D6-440/DPI
Inboard/Outboard
440HP
328.11KW
Fuel: Diesel
Hours: 200
Year: 2022

Summary/Description

One of the First Targas on the East Coast of the United States, 007 was configured to be fast, efficient and out to sea for extended periods in any season. With just 200 hours she is in near new condition, and she has always been stored in the off season in indoor storage.

One of the First Targas on the East Coast of the United States, 007 was configured to be fast and efficient for the ability to adventure out to sea for extended periods in any season. With just 200 hours she is in near new condition, and she has always been stored in the off season in indoor storage. With just 200 hours she is in near new condition, and she has always been stored in the off season in indoor storage.

007 was configured with double the waste and water storage, providing over 80 Gallons of Fresh water and 40 Gallons of waste storage, providing ample fresh water for a full crew to take showers for a week without running out of water. The boat will top out at 38 knots loaded with fuel and water and cruise all day long in the high 20s at 2,600 RPM. The boat was specked with additional teak on the lockers, seats, bow and in the interior additional teak was laid on the walls of the front, and aft bunk walls.

Vessel Details

Targa 32

The Targa 32 is often chosen by professionals, such as coast guards and sea rescue organizations, as well as by private users who appreciate its reliability and performance in various sea conditions.

- **Construction:** The Targa 32 is built with a strong focus on quality and safety, featuring a deep V-hull design for excellent seaworthiness.
- **Design:** The Targa 32 has a practical layout with ample space for leisure use. It includes a spacious fore cabin and a larger toilet compartment in the aft cabin.
- **Maneuverability:** The Targa 32 is ideal for the single-handed user with a bow thruster and stern drive the boat is immensely maneuverable.
- **Comfort:** The boat offers good comfort for longer trips.

Standard Equipment

- Pilothouse with two sliding doors
- Wide passageways around pilothouse
- Fore and aft self-draining decks
- Double transom door
- Swimming platform including ladder
- Seven seats in pilothouse
- Table for five in pilothouse
- Galley (2-burner cooker and fresh water)
- 2 Berth in aft cabin

- Toilet including shower in aft cabin
- 20-Gallon hot water tank

Layout

- Comfort forward cabin
- Straight roof without flybridge
- Aft door version with glass door from pilothouse to aft deck

Hull and Deck

Hull

- Lumishore SMX53 underwater LED lights

Deck

007 has both driving lights on front of the bow which the owner specs not only for nighttime running but for safety as they act like a car's daytime running lights. There is a high-powered spotlight, a bow

work light, an aft work light and an LED light bar which will light up an entire harbor. There are also underwater lights. Other features include:

- Non-standard color: 2-coloured deck and top of seats
- Teak rail extended width around aft deck
- (4) Burnewiin rod-holder stainless steel mounts in teak rail with backing plates and thru-bolts (2 centered on aft rail port and starboard, 2 Aft corners)
- (2) 12VBR2 Marinco plugs for downriggers for electric/hydraulic fishing rods
- Teak on aft deck lockers/seats
- Teak on 20 cm deep "step" and foldable seats behind pilothouse
- Teak on upper fore deck, between bow rails

Swim Platform

- Shower on aft deck/swimming platform from galley pump fresh water cold/hot
- Extended swim platform
- Teak hatch in swim platform
- Swim ladder to starboard with stainless steel handle on transom

Aft Deck

- Navy with white piping exterior aft deck cushions
- Extended roof (approximately 18" beyond aft door)
- Sunshade for aft deck
- In-deck fish locker/dry storage

- (2) Folding deck chairs stored in canvas bags under engine
- Table under hatch and canvas for chairs in engine room
- Propane line led to port aft locker for BBQ

Bow

- Navy with white piping exterior foredeck cushions
- (2) Bow lights LED, stainless steel housing 35 W (equivalent to ~ 2 x 90 W)
- Anchor winch on bow standard electric Lewmar V1 (700 W)
- 8M stainless steel chain/40 m rope with roller
- 16Kg galvanized "Delta" anchor
- Control panel in pilothouse and fore deck for windlass
- Bow ladder removed

Pilot Salon Roof/Superstructure

- Long-range running lights, LED - Vision X XPR-9M, 19", 90W on pilothouse roof
- (3) Interval wipers with windscreen wash system
- Reservoir for windscreen wash allows all season washer fluid so you can run all year and don't have to drain system
- Extended roof stainless steel handrails/support

Interior

007 has both Hydroponic (Forced hot water) heat and an auxiliary heater by Espar, which provides heat to the entire cabin even if the engine is not running. The galley has both salt and freshwater, hot and cold water with 20 gallons of hot water which is heated electrically if plugged into shore power and by the engine when underway. The Bathroom is an electric, freshwater flush system eliminating the smell often associated with marine toilets. The aft bathroom is also fitted with a dedicated pressurized hot and cold-water shower system with shower wand with flexible hose and wall mount. A 110-volt outlet has also been installed in the head compartment.

- Gray carpet with trim in pilothouse
- Gray curtains for aft side windows and aft window
- Alcantara salon upholstery
- Portlights hull opening stainless steel
- (2) Roof hatches on hinges Lewmar Low Profile 60 includes sunshade and mosquito net
- Contemporary interior
- Cabin heater diesel - Eberspächer D 4
- (4) Caframo cabin fans (2 in aft cabin, 1 in salon and 1 in forward cabin)

Helm Station/Co-Pilot Station

- Angled teak box for chart plotter in front of steering wheel
- Teak footrest in lieu of stainless footrests (owner has stainless steel footrests as well)
- USB outlet installed behind helm seat

Salon

- TV cabinet aft of salon (for tip up TV, Majestic 22" 12V) includes power outlet and HDMI (no antenna)

Galley

- Saltwater pump to galley - 7 L/min/1.4 bar
- Eno oven beneath stove top

Dinette

- Dinette Layout - Table on Pole to Ceiling with filler cushion and legs for table (allows the table to slide up and out of the way, part way down for the dinette table and all the way down to convert dinette into bunk with infill)

Cabins

- Mirror on wall between aft beds
- Teak slats on berth hull sides in aft cabin
- Privacy curtain added in aft cabin on sliding rail
- Foam topper on aft double berths with sheet set
- Teak slats on berth hull sides in fore cabin
- Additional step to forward cabin with storage behind steps with additional storage

Electrical System

The boat is prewired for solar with a solar control unit already integrated into the boat. The new owner just needs to purchase a solar panel and connect the wires. The owner took this option, knowing that the efficiency of the solar panels is continually improving by the quarter. With 5 Gel Marine batteries, power has never been an issue even on extended stays away from power.

- (3) Group 31 gel service batteries
- Inverter Mastervolt Mass Sine 12/2000
- Mastervolt Mass GI 7 isolation transformer, against corrosion and electrical disturbance
- Pre-wire for solar with charge controller - wiring through roof to junction box port side
- Smart plug shore power system

Mechanical Systems

The boat is fitted with a single Volvo D440 with a DPI dual prop stern drive. This set up offers superior fuel economy of 2.2 nm per gallon. Fuel burn at 25 knots is about 12 gallons per hour providing for a range at 25 knots of approximately 450 miles with a 10% reserve. If dialed back to 16 knots the boat will easily cruise at over 600 miles. The owner has taken many trips from Portsmouth, NH to Camden Maine and back without ever refueling a trip of over 250 NM.

The boat has active corrosion protection in addition to extensive anodes.

The single engine provides power, efficiency with the lowest cost of maintenance and has gobs of room for you or a mechanic to work on.

Electronics

Garmin 8616xsv electronics

At Helm

- Garmin marine VHF
- Garmin AIS 800 (transmits and receives)
- Card reader and port expander
- Volvo Penta full control, NMEA 2000 and fuel management

On Roof

- Garmin GMR Fantom 18 Radar
- Antenna on ratchet mount on arch

In Hull

- Dual GT51's for fishing

Additional

- Antenna splitter

Entertainment

- Fusion MS-RA770 stereo with 3 zone amp, (8) speakers (4 in salon, 2 in cockpit, 2 in forward cabin)

Upgrades

- Water heater upgraded to 10.5-gallon tank
- Water capacity upgraded to 80-gallon tank
- Black water tank upgraded to 40-gallons
- Drains on exterior washdown and shower for winterization
- Signature series interior speakers
- 7" VP Glass cockpit displays in lieu of analog gauges (required for oil level reading)
- Manual gauges added for redundancy

Additional Equipment

- Mooring Lines
- Fenders
- Fender socks

Represented by a Certified Professional Yacht Broker (CPYB)

A Certified Professional Yacht Broker (CPYB) is recognized as having achieved the highest level of industry accreditation, available only to fully qualified yacht sales professionals. The CPYB program is administered by Yacht Brokers Association of America in partnership with Florida Yacht Brokers Association, Northwest Yacht Brokers Association, California Yacht Brokers Association, Boating Ontario Dealers, British Columbia Yacht Brokers Association and Gulf Coast Yacht Brokers Association.

The CPYB program is also endorsed by the Marine Retailers Association of the Americas (MRAA) Marine Industry Certified Dealership (MICD) program and leading yacht manufacturers as a key component of their own industry standards, the highest level of achievement for their member yacht sales professionals.

Experience & Validity

The CPYB designation is earned by eligible yacht sales professionals, who, after serving a minimum of three years as a full-time professional, have successfully completed a comprehensive written examination to validate professional competency.

Continuing Education

A CPYB is committed to their personal and professional development through continuing education, as mandated for CPYB recertification every three years.

Ethics & Standards

A CPYB adheres to, and is accountable to, a nationally recognized Code of Business Ethics and conducts yacht sales transactions in accordance with a stringent set of industry standards of practice.

Fiduciary Responsibility

A CPYB maintains a dedicated escrow/trust account to protect their client's funds. A CPYB understands their fiduciary responsibility and obligations with respect to client funds.

Transaction Management

A CPYB uses proven, industry-recognized transaction documents, which fully and clearly describe all terms and conditions of a transaction.

Honesty & Integrity

A CPYB maintains the highest standards of professionalism, acting with honesty and integrity.

Trust & Confidence

A CPYB instills confidence, trust and consistency in all transactions involving fellow yacht sales professionals for the benefit of the client.

Disclaimer

The company offers the details of this vessel in good faith but cannot guarantee or warrant the accuracy of this

information nor warrant the condition of the vessel. A buyer should instruct his agents, or his surveyors, to investigate such details as the buyer desires validated. This vessel is offered subject to prior sale, price change or withdrawal without notice.

Mechanical Disclaimer

Engine and generator hours are as of the date of the original listing and are a representation of what the listing broker is told by the owner and/or actual reading of the engine hour meters. The broker cannot guarantee the true hours. It is the responsibility of the purchaser and/or his agent to verify engine hours, warranties implied or otherwise and major overhauls as well as all other representations noted on the listing brochure.



Targa 32 007D 3



Targa 32 007D 5



Targa 32 007D 6



Targa 32 007D 8



Targa 32 007D 10



Targa 32 007D 13



Targa 32 007D 14



Targa 32 007 Offered For Sale 25



Targa 32 007 Offered For Sale 23



Targa 32 007 Offered For Sale 21



Targa 32 007 Offered For Sale 20



Targa 32 007 Offered For Sale 13



Targa 32 007 Offered For Sale 14



Targa 32 007 Offered For Sale



Targa 32 007 Offered For Sale 3



Targa 32 007 Offered For Sale 15



Targa 32 007 Offered For Sale 12



Targa 32 007 Offered For Sale 11



Targa 32 007 Offered For Sale 9



Targa 32 007 Offered For Sale 7



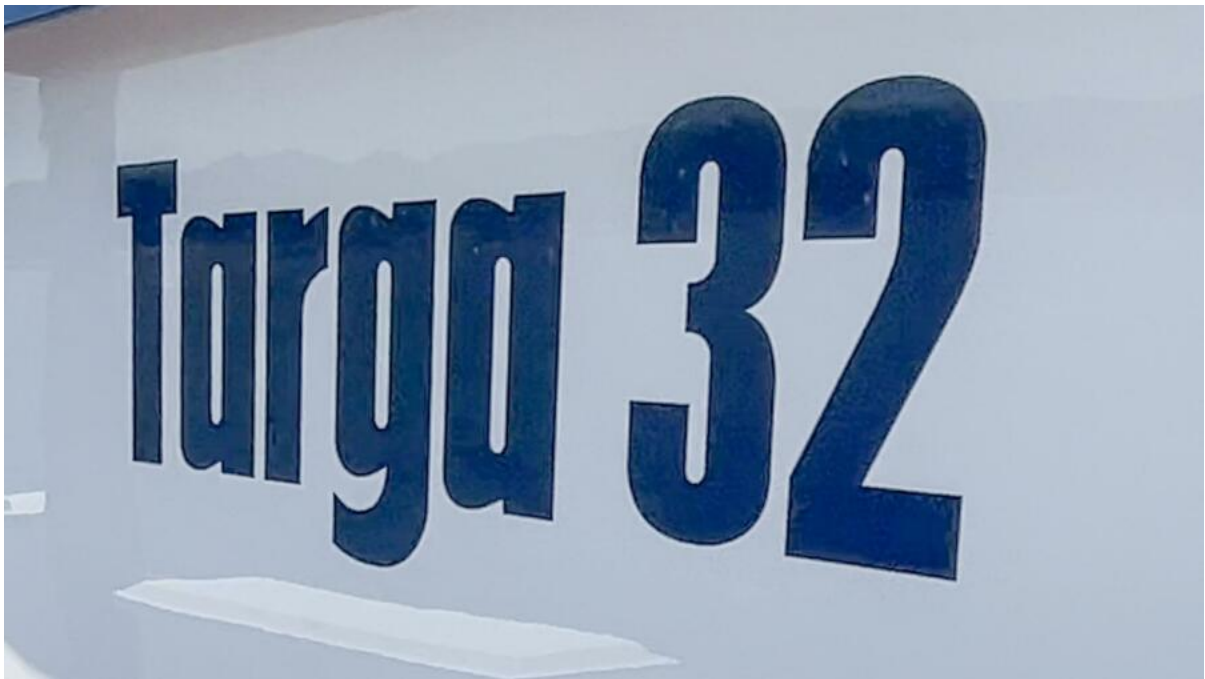
Targa 32 007 Offered For Sale 8



Targa 32 007 Offered For Sale



Targa 32 007 Offered For Sale 6



Targa 32 007 Offered For Sale 5



Targa 32 007 Offered For Sale 16



Targa 32 007 Offered For Sale 17



Targa 32 007 Offered For Sale 10



Targa 32 007 Offered For Sale 18



Targa 32 007 Offered For Sale 428



Targa 32 007 Offered For Sale 433



Targa 32 007 Offered For Sale 434



Targa 32 007 Offered For Sale 435



Targa 32 007 Offered For Sale 436



Targa 32 007 Offered For Sale 437



Targa 32 007 Offered For Sale 438



Targa 32 007 Offered For Sale 626



Targa 32 007 Offered For Sale 439



Targa 32 007 Offered For Sale 442



Targa 32 007 Offered For Sale 677



Targa 32 007 Offered For Sale 429



Targa 32 007 Offered For Sale 431



Targa 32 007 Offered For Sale 416



Targa 32 007 Offered For Sale 657



Targa 32 007 Offered For Sale 669



Targa 32 007 Offered For Sale 397



Targa 32 007 Offered For Sale 665



Targa 32 007 Offered For Sale 664



Targa 32 007 Offered For Sale 412

[illegible]

800-826-2807



Targa 32 007 Offered For Sale 653



Targa 32 007 Offered For Sale 400



Targa 32 007 Offered For Sale 655



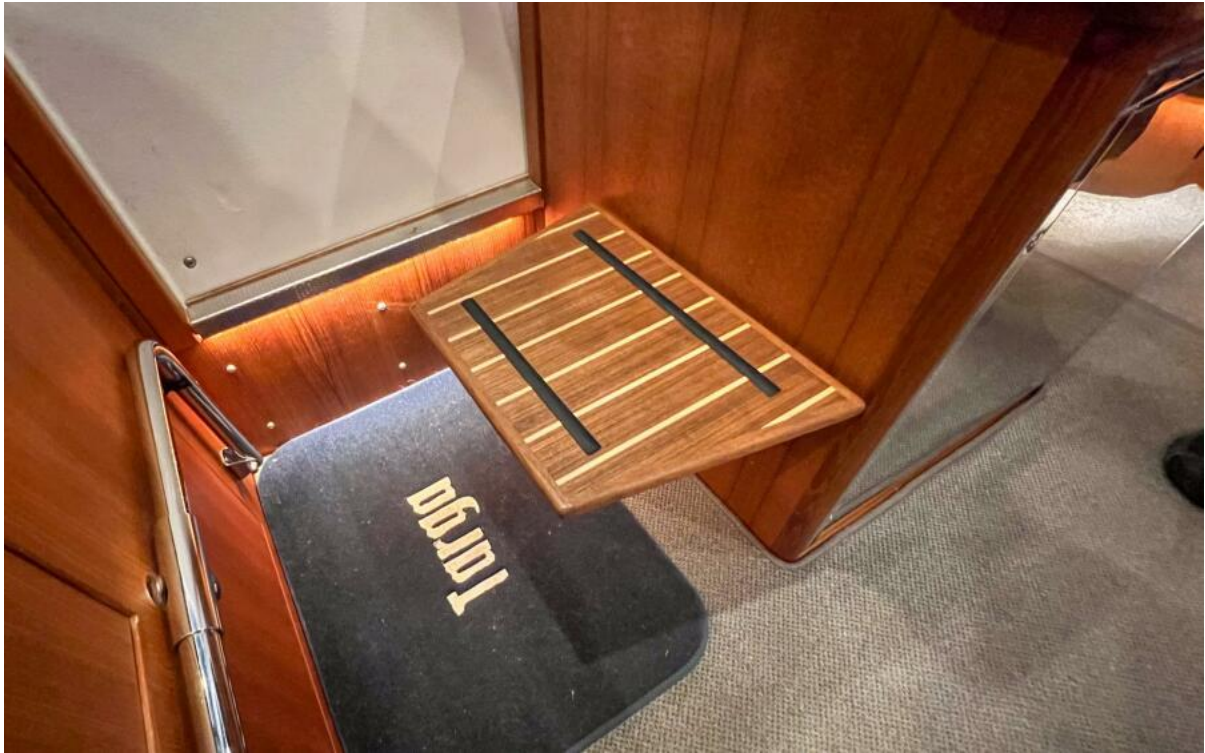
Targa 32 007 Offered For Sale 689



Targa 32 007 Offered For Sale 419



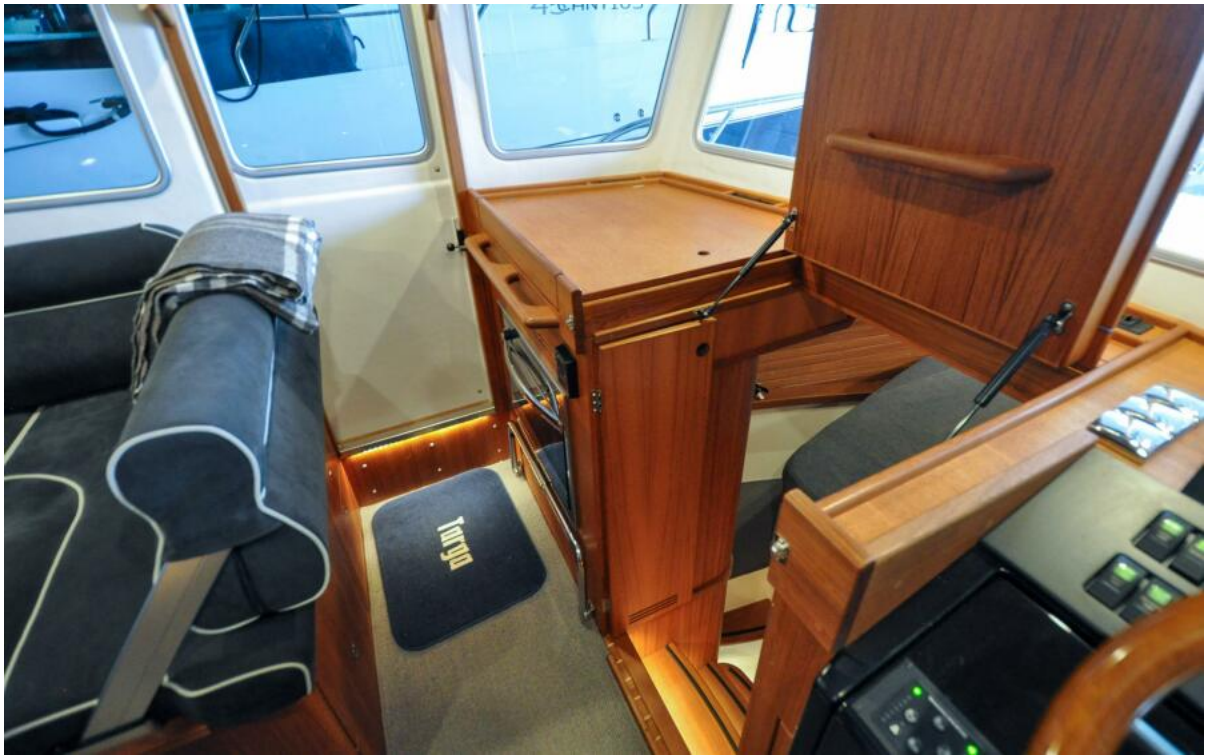
Targa 32 007 Offered For Sale 647



Targa 32 007 Offered For Sale 421



Targa 32 007 Offered For Sale 415



Targa 32 007 Offered For Sale 660



Targa 32 007 Offered For Sale 404



Targa 32 007 Offered For Sale 668



Targa 32 007 Offered For Sale 408



Targa 32 007 Offered For Sale 645



Targa 32 007 Offered For Sale 409



Targa 32 007 Offered For Sale 406



Targa 32 007 Offered For Sale 661



Targa 32 007 Offered For Sale 662



Targa 32 007 Offered For Sale 420



Targa 32 007 Offered For Sale 423



Targa 32 007 Offered For Sale 634



Targa 32 007 Offered For Sale 424



Targa 32 007 Offered For Sale 686



Targa 32 007 Offered For Sale 444



Targa 32 007 Offered For Sale 676



Targa 32 007 Offered For Sale 432



Targa 32 007 Offered For Sale 684



Targa 32 007 Offered For Sale 685



Targa 32 007 Offered For Sale 688



Targa 32 007 Offered For Sale 674



Targa 32 007 Offered For Sale 391



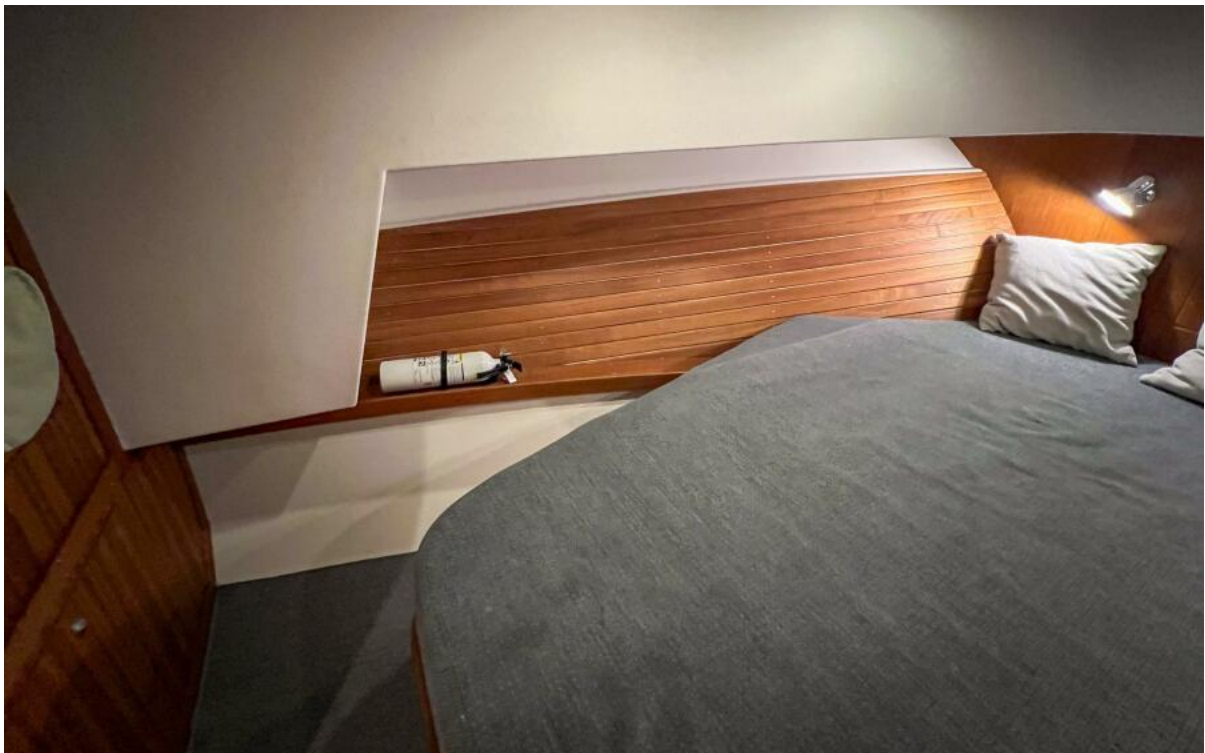
Targa 32 007 Offered For Sale 395



Targa 32 007 Offered For Sale 392



Targa 32 007 Offered For Sale 393



Targa 32 007 Offered For Sale 394



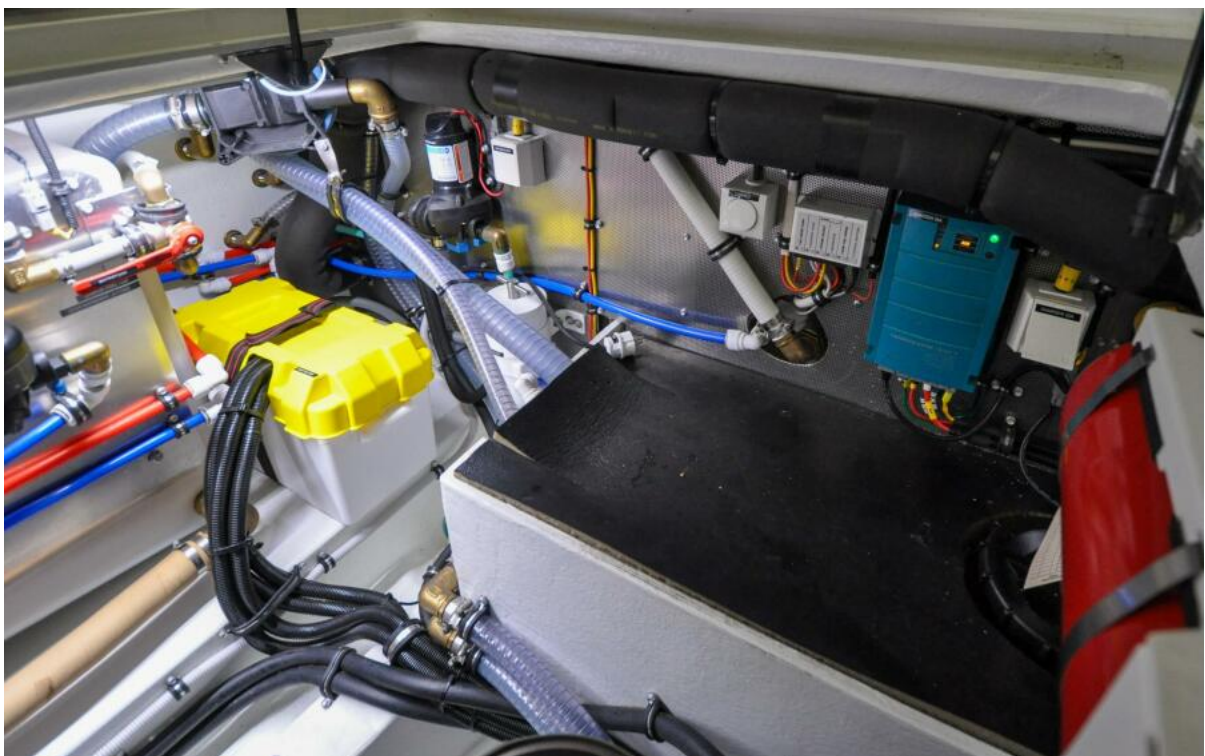
Targa 32 007 Offered For Sale 694



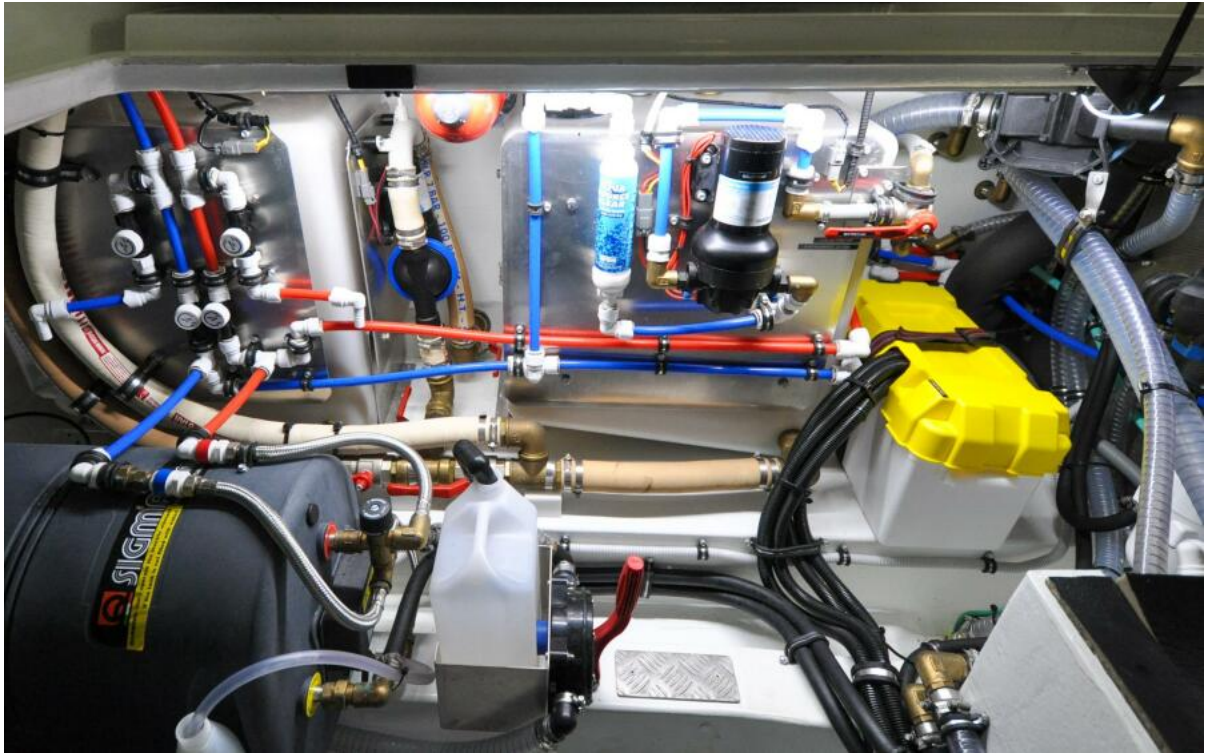
Targa 32 007 Offered For Sale 699



Targa 32 007 Offered For Sale 695



Targa 32 007 Offered For Sale 696



Targa 32 007 Offered For Sale 697



Targa 32 007 Offered For Sale 698