



KAILUA

74' (22.56m) 2018 Sunreef Sunreef 74C
Hollywood Florida United States



OVERVIEW

\$3,500,000

Manufacturer:	Sunreef	Hull Material:	FRP
Engines:	1 John Deere	Cruise Speed:	
Engine Model:	4045AFM85	Max Speed:	
Engine HP:	225	Cabins/Heads:	4 /
Beam:	33' 1"	Fuel Type:	Other
Max Draft:	6' 4"	Fuel:	793 G (0 L)
Water:	211 G (0 L)		



Data Sheet

Category: Catamaran

Condition: Used

Model Year: 2018

Beam: 33'1" Max Draft: 6' 4" LOA: 74'
(22.56m)

Cabins: 4

Fuel Type: Other

Hull Material: FRP

tonnes

Fuel Tank: 793 gal Fresh Water: 211 gal

Imported: Yes

HIN/IMO: PL-SRY74C12D818

Stock #: 336853

Engines/Generators

Engine 1

John Deere

4045AFM85

225HP

Fuel: Other

Hours: 4157

Summary/Description

Used Sail Catamaran for sale

****Seller is motivated and willing to consider any reasonable offer. Vessel is US Duty paid. ****

The Sunreef 74 marks a new era in lifestyle at sea, meeting the expectations of the most demanding clientele searching for a long-range optimized yacht offering a perfectly balanced compromise between supreme comfort, performance, and advanced technology.

The S.Y Kailua is no ordinary Sunreef 74C, a tremendous amount of attention has been paid to make sure she stuns you every time you get high-end been completed in the past year in both the electrical and interior furnishings making her not only the perfect pleasure cruise craft, but

also more than capable on taking you to any adventure, no matter where you want to go.

The Sunreef 74C is an incredible sailing yacht that makes sailing an high-end serves every need from the casual sailing trip to an ocean crossing. Beautifully outfitted cabins that bring in lots of natural light - allowing for some pleasant down time in the master Suite or one of the other 3 cabins. state-of-the-art installed in 2021 that allows for generator free hours at anchor - whilst not having to sacrifice the comforts of A/C. An aft platform that makes it easy to get in the water with all the included water sport toys - a Seabob FS5, E-Foil, SUP, and more. With 2 watermakers onboard, one of which runs on 24V, you have absolute freedom with redundancy, making spending extended periods of time in far flung destinations possible. KVH Maritime Tracphone V7-HTS Satellite Communication System & additionally a Starlink terminal onboard for use in the future.

Layout & Accommodations

The vessel has a beautiful interior and is equipped with the following features:

Beautifully crafted furniture made with individually selected grade A wood treated with high end varnish

Beautifully upholstered cushions throughout all the cabins

Front saloon windows finished with black hatch frames and darkened windows

Teak toe rails along the entire deck

Deck (incl. flybridge) covered with 10mm teak and installed flush to the hatches (Lewmar)

An electric sliding door for the master cabin, maximizing the space in the owners cabin.

The master cabin sports a desk with multiple lockable drawers

Beautifully designed bathrooms in each cabin

Electric sockets

Adjustable lights

Electric curtains

Aircon in every cabin

Galley

High End galley appliances package:

Refrigerator with integrated freezer

Dishwasher

Gas stove (2022)

Electric oven (2022)
Microwave (2022)
800L of Fridge and Freezer space in the galley
Thermomix Kitchen Machine
Washing machine & dryer (2022)

Deck & Equipment

The S.Y. Kailua has state of the art systems that make sailing and enjoying time on deck easy:

Bow pulpits with integrated teak seats
Lewmar portlights
1 swim ladder on the skirts with large easy to grab handles
Blocks and jammers-Harken, Antal and Spinlock
Electric lifting system for the dinghy with extendable arms and remote controller for up to 1000 kg including stainless steel dinghy chokes
A Hydraulic platform capable of lifting up to 500 kg
A Hatch at the top of the stairway between cockpit and flybridge
2 fresh water outlets at the bottom of the mast and in the cockpit
5 deck chairs (Valdenassi Calypso) together with a height adjustable cockpit table
L-Shaped sofa in the cockpit
Composite hard top bimini with SS leg and structure on the flybridge with integrated lights and solar panels.
Bow pulpits with integrated teak seats
Bimini windshield
Carbon steering wheel 1200 mm 3-stroke
Hydraulic gangway - Opacmare - model (3000mm length, width 60mm)
4 aft and bow capstans for mooring — 1500 W Quick
Rain Shower on the cockpit ceiling with mixing valve
Cover kit (Steering wheel, Nav station, Flybridge table) - Sunbrella
Curtains to cover flybridge
Curtains to fully close cockpit.
Stainless steel BBQ on the flybridge
Wine cooler for 32 bottles (Liebherr Vinidor)
Double-drawer fridge Vitrifrigo in saloon
Fridge in the cockpit
Fridge on the flybridge
2 x Ice Maker
Mooring kit (10 fenders + 4 mooring ropes)
Anchors:
Main Anchor - Ultramarine 100kg
Secondary Anchor: FOB Rock 60kg
2x Windlass Quick Marine DK6 3500 W with drum + 120 m galvanised chain (diameter 16mm)
Digital Chain Counter
2x Boat hook
Rudders constructed of a moulded sandwich lamination (fiberglass/vinyl ester)
Self-aligning lower and top bearings

Hydraulic steering system

2 emergency tillers

Electronic alignment system

The hulls, deck, flybridge and all structural bulkheads are constructed of e-glass sandwich laminate with reinforcement by infusion giving the Sunreef 74C an incredibly strong hull with a long life.

Rudders constructed of a moulded glass/vinyl ester and the rudder stocks are made out of high end aluminium

The extended longitudinal beam is reinforced

A Catwalk is fitted on the forward beam

The raisable aft platform makes swimming and watersports possible with ease at the press of a button

Electronics & Navigation

135mm Compass

Raymarine AIS700 Class B

Raymarine gS-series (2021):

1x15,4" Raymarine Multifunction Display

1x12,1" Raymarine Multifunction Display

2 x Raymarine RMK-9 remote keyboard

Radar 4kW 24" Raymarine RD424HD

Raymarine Evolution Autopilot

2 x pilot control Raymarine p70

GPS RayStar 130

4 universal displays Raymarine i70 for speed, depth and wind display

Ray260 VHF with DSC function (dual station)

Mast mounted camera

Widescreen 55" LED TV in the saloon

Including a system that completely hides the TV in the ceiling when not in use at the touch of a button

Widescreen 32" TVs in each cabin

High end yacht wide audio system:

Heos by Denon Surround 4.1 (Yamaha Subwoofer + Heos driver with ceiling speakers)

4 waterproof speakers in the cockpit

Multimedia / Wifi System:

Hubba X4 Duo (Wifi / GSM Router)

Asus Router

WD Personal Cloud for Offline Media Viewing

Apple TV 4K & Chromecast

Satellite Internet & Phone:

Maritime Tracphone V7-HTS

Starlink

KVH Maritime Tracphone V7-HTS Satellite Communication System

Electrical, Power & Plumbing

The S.Y Kailua was completely upgraded to a state of the art Lithium

Battery system in 2021 - making her far more capable than any other

Sunreef 74C on the market today:

Generators: 2x Cummins Onan Diesel 2x 27kVA Port generator hours: 3326 Starboard generator hours: 3354

AC – 230V 50Hz 1PH: main switchboard with panel extension
(semi-automatic change over shore/generators)

1x Victron Cerbo Energy Monitoring & Control

4x Victron chargers (24V/100A)

1x Victron chargers (24V/80A)

2x Victron Inverters (230V/50Hz/5000W)

1x Victron Inverter (230V/50Hz/3000W)

8x Victron 24V LFP batteries 1600AH

2x 24V AGM Batteries

2x shore power inlets (63A)

2x Mastervolt 110A Alternator

12 solar panels 156Wp on hardtop bimini.

Guest & Master Cabin:

3 x Sockets(230V)

3 x USB Chargers

4 x Sockets (230V) in the saloon

4 x Sockets (230V) in the dining area

4 x Sockets (230V) in the galley

The S.Y Kailua's D/C systems are centrally controlled - making it easily to manage your D/C systems:

Domotic Controller- the control system for lights, controls, and D/C system:

Valves / Pumps:

Control of all electric valves

Control all pumps (grey, black, freshwater, etc.)

Measurement / System Information:

Tank level monitoring with alarm: fresh water, black water, fuel

Measurement of temperature in the engine room

The boat is lit up well naturally through its open floor plan and many windows - for everything else there are state of the art lighting systems on board:

Dimmable cabin lights (All lights are equipped with LED Lamps)

Navigation lights (LED)

Lights in the engine rooms (LED)

10 underwater LED lights (Sea Vision)

Mast LED courtesy light

Exterior lighting (Deck light w/ 2 additional lights for the flybridge with separate switch)

LEDs in skirts' stairs, cockpit and flybridge

Upgraded black round ceiling lamps for bathrooms and hallway

2x 800 Liters / 211 Gallons fresh water tanks equipped with level indicators and pump

2x 100 Liters / 26.4 Gallons hot water boilers

1x 700 Liters black water tanks with 3 way valves

1x 700 Litres grey water tanks with electric pumps

Fresh water inlet, shore connection

Bilge pumps:

4 electrical bilge pumps

2 manual bilge pumps

Fresh water hose outlets:

1 x cockpit

1 x bow

Rain Shower on the cockpit ceiling with mixing valve

6 High end Tecma electric toilets with fresh water flush

Hot Water Boilers: 2x 100 Liters / 26.4 Gallons

Fresh Water Tanks: 2x 800 Liters / 211 Gallons

Black Water Tanks: 700 Litres / 184 Gallons

Grey Water Tank: 700 Litres / 184 Gallons

Water Maker 1: Sea Recovery Aquamatic 1400

Water Maker 2: Watermaker Schenker Zen 100

Starboard watermaker 1966

Engine & Mechanical

The S.Y. Kailua is equipped with the following propulsion system:

2x John Deere 4045AFM85 (225 HP) | Port: 4157 hours. Stbd 4111 hours (as of October 2023)

Stainless Steel Shafts

2 three-bladed folding propellers (Ewol)

2 engine speed controls and 2 extra engine instruments at the navigation table + engine controls

Yacht controller for control of engine and bow thruster and windlass plus upgrade of the engine controls from ZF to Marex

2 electric bow thrusters-Side Power

2 electric oil pumps for servicing engines and generators

Extended long range fuel tanks of 2x 3000 Liters / 793 Gallons

(Instead of the standard 1000 Liter tanks)

2 foldable diesel turtle tanks 1000 Litres each

1 electric pump + 1 manual pump for fuel tanks

Rope cutters on the propeller shafts

Air Conditioning of 104'000 BTU from Frigomar:

1x 62'000 BTU Unit

1x 42'000 BTU Unit

Fireboy fire extinguishing system in the engine rooms

Adaptation to commercial requirements, MCA cat 2 (Red Ensign)

Fire extinguishers in every cabin

Sails & Rigging

The S.Y. Kailua comes equipped with state of the art sailing equipment, ready to sail anywhere:

Carbon mast Performance

Carbon boom Park Avenue

Lazy jack and lazy bag

A Fully battened mainsail made of first choice dacron, cross cut, 2 reefs made by Incidence Sails

A double pleated Genoa made of first choice dacron, made by Incidence sails with complete gear and an electrical furler (Profurl)

A double pleated Staysail made of first choice dacron, made by Incidence sails with complete gear and an electrical furler (Profurl)

Gennaker made by Incidence Sails ,including complete gear and an electric furling (Profurl)

Storm Jib made by Incidence sails

Mast steps up to boom height
Main Sail: 180 Square Meters / 1937.5 Square Feet
Genoa: 114 Square Meters / 1227 Square Feet
Staysail: 80 Square Meters / 861 Square Feet
Storm Jib: 20 Square Meters / 215 Square Feet
Gennaker: 260 Square Meters / 2798 Square Feet

Additional Information

The vessel comes with a beautiful Tender making trips to shore and back an absolute breeze:

Diverib 550 with hypalon tubing
Suzuki 115 HP fourstroke outboard DF115A
Suzuki Keyless Start System
Lowrance Elite 7Ti chartplotter
Raymarine VHF Ray60
New upholstery 2022
Sound System:

4 speakers & radio
Ultra Marine 5kg anchor
Towing post for wakeboards / waterskiing
Navigation lights
Courtesy lights

A variety of incredibly fun water sport toys that make any sail trip an even more fun adventure:

Seabob FS5 including Camera
Fliteboard electric foil board (E-Foil)
2x SUP

1x Complete Wing Foil Setup

Kitesurfing Equipment:

2 boards & kites: 7,9,12 Cabrinha

Foldable kayak

Nomad Floating Electric Dive Compressor

2x Wakeboard

1x Wakesurf

Tube for Tubing

Snorkeling Equipment 7x set of fins with mask and snorkel

Yoga Mats, Weights, Gym Equipment, etc.

3x E-Scooter

Vessel was out of the water for service in June/July 2023 and had the following service work completed;

Arimar Liferrafts (2) serviced and installed, new HRUs (2) mounted

Fire extinguishers (13) and engine rooms fire suppression system (2) inspected

Engine shafts (2) with couplings (2) were taken out, serviced and mounted back

EWOL propellers (2) were taken out, serviced, cleaned, greased

New Tidesmarine shafts seals (2) installed

Shafts (2) alignment and correction of engines mountings

Rudders and bearings inspected after removal

Bottom, rudders and bow thrusters painted with two coats of Interlux Micron Extra SPC with additional layer on waterline, bows, transoms and rudders

Propellers and shafts painted with Prop speed after installation
New zinc anodes on shafts (2) and bow thrusters (4)
Minor damages in fiberglass on bows and transoms repaired
Paint touchups on Tenderlift platform
Emergency hatches (4) repainted
New Tenderlift belts (2) installed
Caulking replaced where needed on flybridge
New caulking around aft fairleads
All valves and thru hulls checked, 2 valves exchanged
Grey water system flushed and dismantled for cleaning where needed
Main anchor chain locker cleaned, ground tackle inspected
Stern and side railing cables (16) exchanged
Bilges inspected and cleaned
Bilge pumps (6) checked, one repaired



Used Sail Catamaran for sale 2018 Sunreef 74C - KAILUA



Used Sail Catamaran for sale 2018 Sunreef 74C - KAILUA



Used Sail Catamaran for sale 2018 Sunreef 74C - KAILUA



Used Sail Catamaran for sale 2018 Sunreef 74C - KAILUA



Used Sail Catamaran for sale 2018 Sunreef 74C - KAILUA



Used Sail Catamaran for sale 2018 Sunreef 74C - KAILUA



Used Sail Catamaran for sale 2018 Sunreef 74C - KAILUA



Used Sail Catamaran for sale 2018 Sunreef 74C - KAILUA



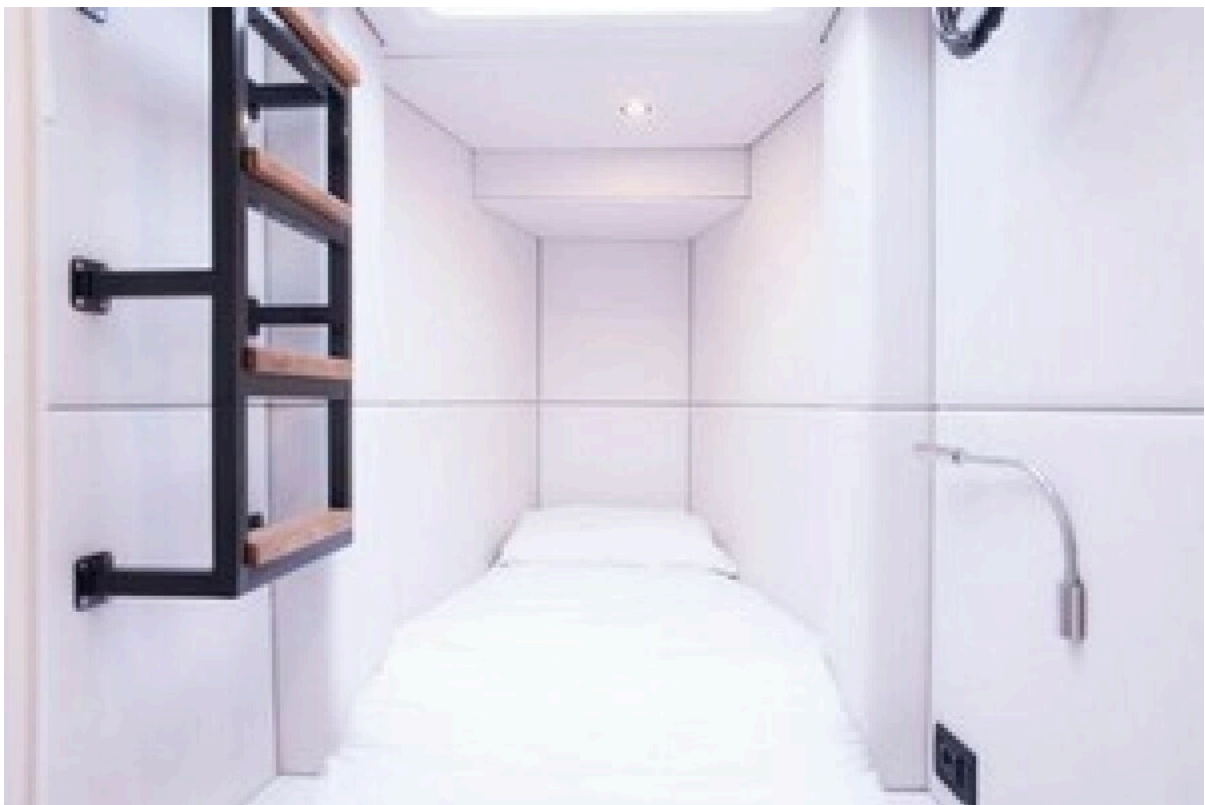
Used Sail Catamaran for sale 2018 Sunreef 74C - KAILUA



Used Sail Catamaran for sale 2018 Sunreef 74C - KAILUA



Used Sail Catamaran for sale 2018 Sunreef 74C - KAILUA



Used Sail Catamaran for sale 2018 Sunreef 74C - KAILUA



Used Sail Catamaran for sale 2018 Sunreef 74C - KAILUA



Used Sail Catamaran for sale 2018 Sunreef 74C - KAILUA



Used Sail Catamaran for sale 2018 Sunreef 74C - KAILUA



Used Sail Catamaran for sale 2018 Sunreef 74C - KAILUA



Used Sail Catamaran for sale 2018 Sunreef 74C - KAILUA



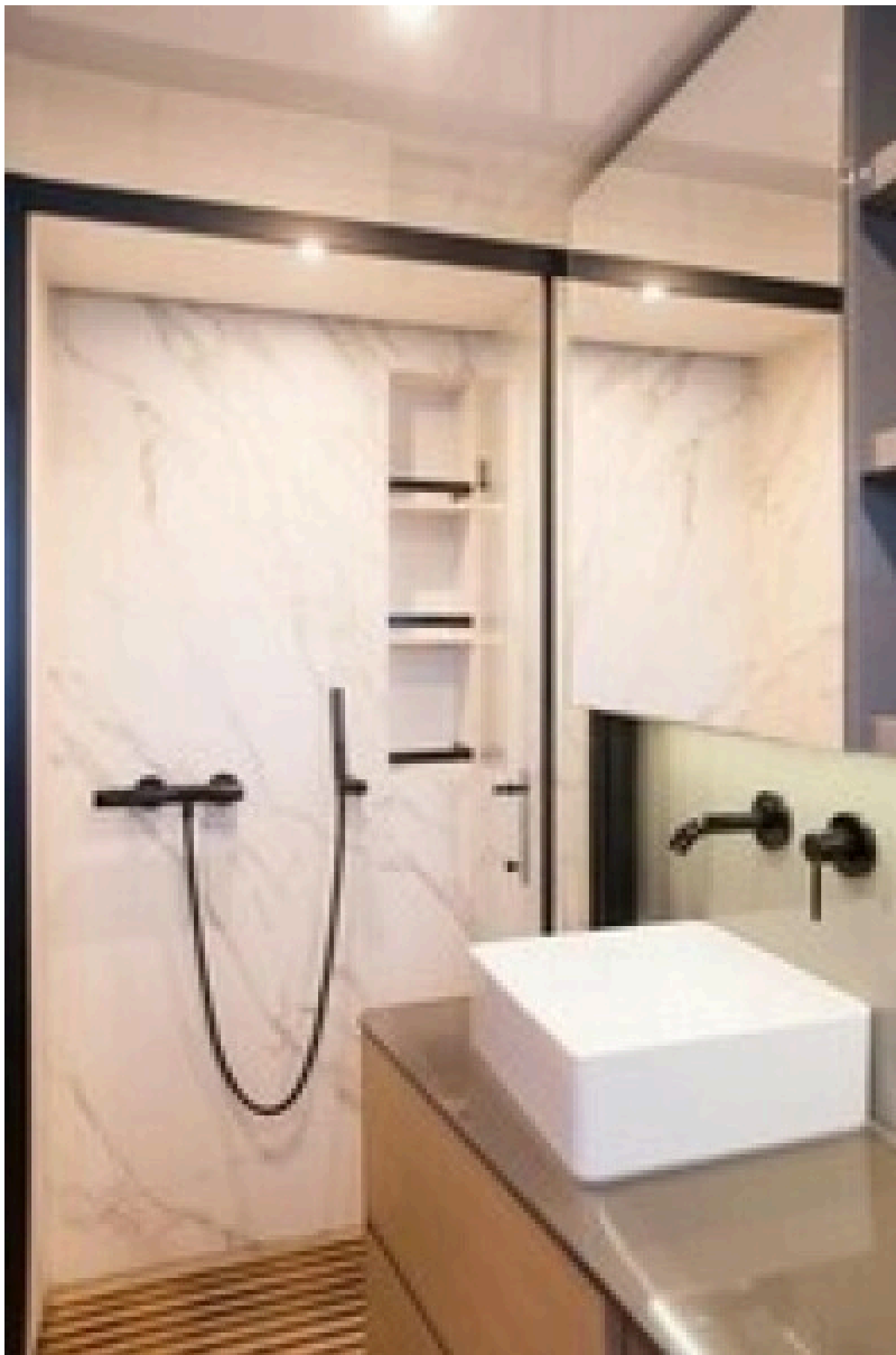
Used Sail Catamaran for sale 2018 Sunreef 74C - KAILUA



Used Sail Catamaran for sale 2018 Sunreef 74C - KAILUA



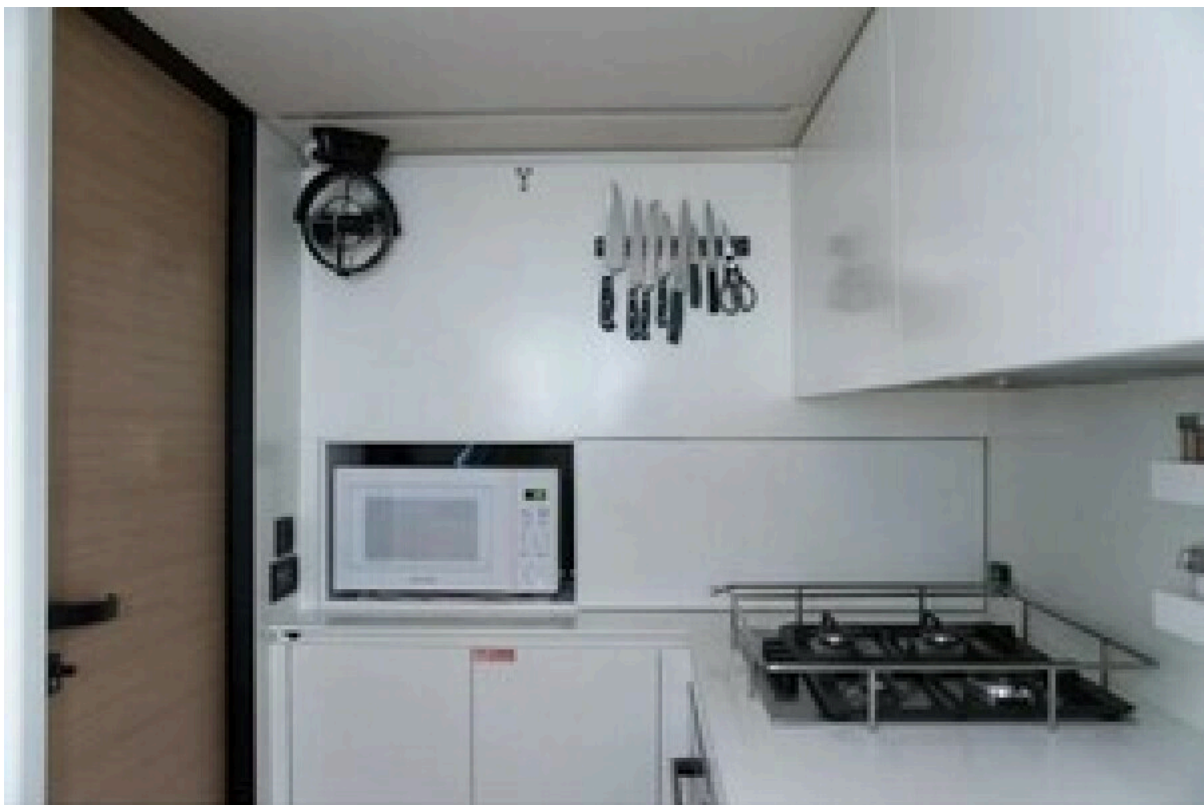
Used Sail Catamaran for sale 2018 Sunreef 74C - KAILUA



Used Sail Catamaran for sale 2018 Sunreef 74C - KAILUA



Used Sail Catamaran for sale 2018 Sunreef 74C - KAILUA



Used Sail Catamaran for sale 2018 Sunreef 74C - KAILUA



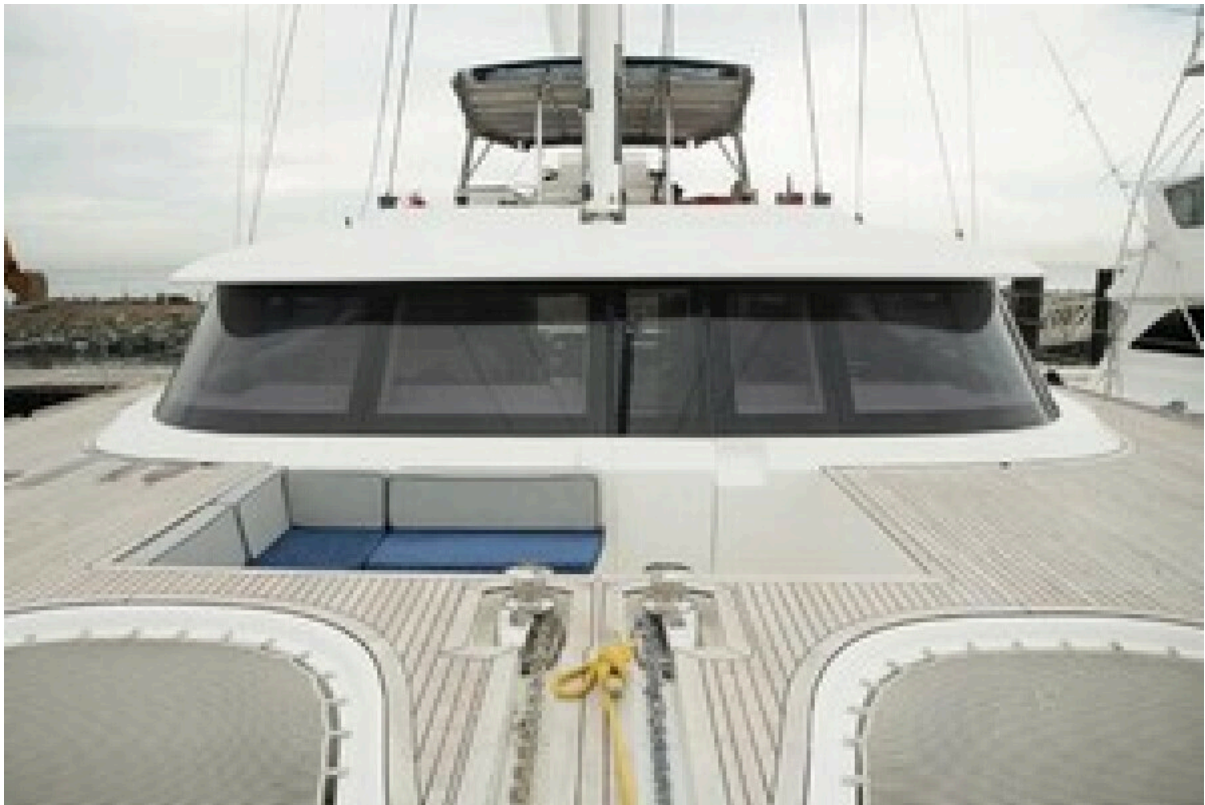
Used Sail Catamaran for sale 2018 Sunreef 74C - KAILUA



Used Sail Catamaran for sale 2018 Sunreef 74C - KAILUA



Used Sail Catamaran for sale 2018 Sunreef 74C - KAILUA



Used Sail Catamaran for sale 2018 Sunreef 74C - KAILUA



Used Sail Catamaran for sale 2018 Sunreef 74C - KAILUA



Used Sail Catamaran for sale 2018 Sunreef 74C - KAILUA



Used Sail Catamaran for sale 2018 Sunreef 74C - KAILUA



Used Sail Catamaran for sale 2018 Sunreef 74C - KAILUA



Used Sail Catamaran for sale 2018 Sunreef 74C - KAILUA



Used Sail Catamaran for sale 2018 Sunreef 74C - KAILUA



Used Sail Catamaran for sale 2018 Sunreef 74C - KAILUA



Used Sail Catamaran for sale 2018 Sunreef 74C - KAILUA



Used Sail Catamaran for sale 2018 Sunreef 74C - KAILUA



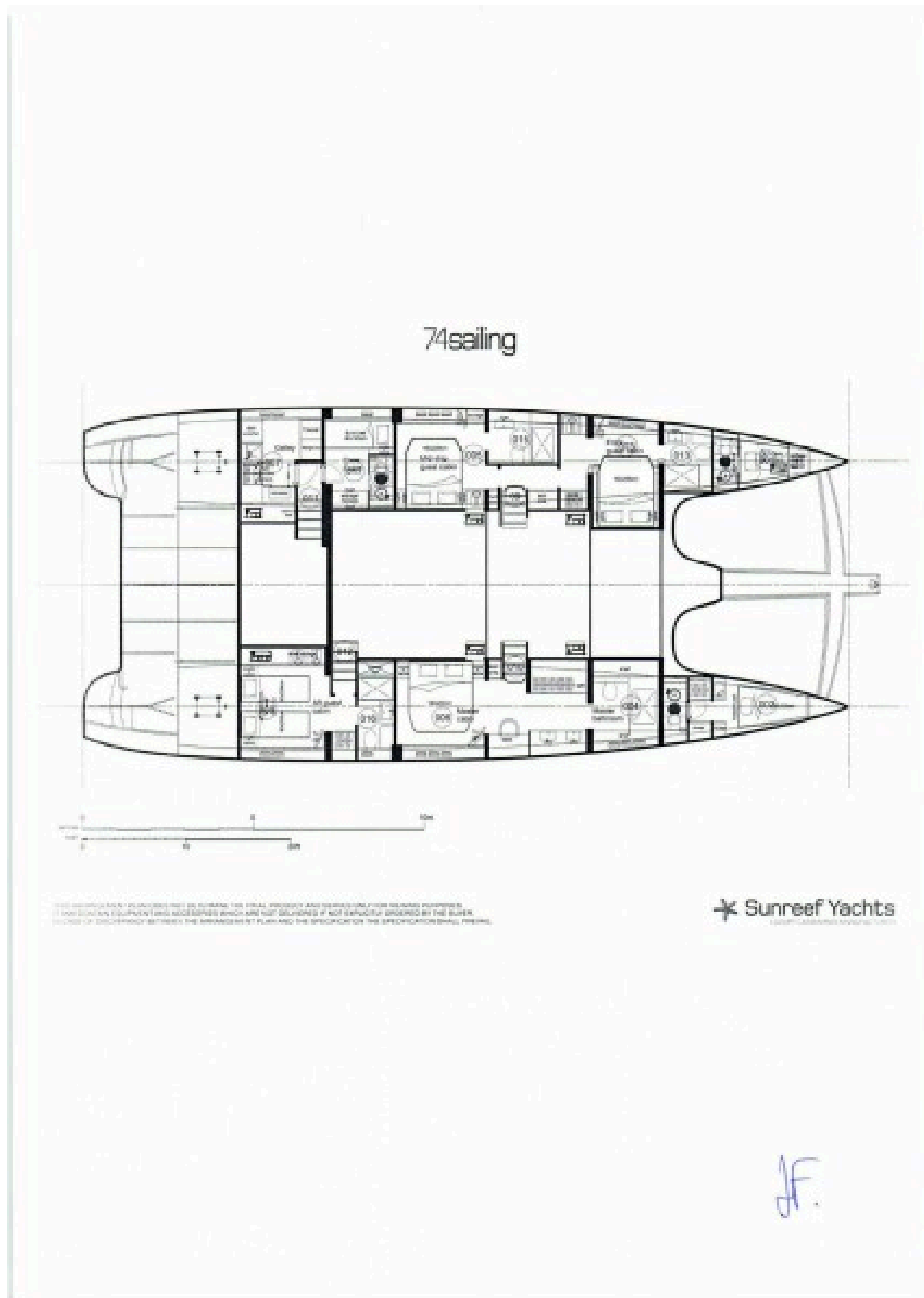
Used Sail Catamaran for sale 2018 Sunreef 74C - KAILUA



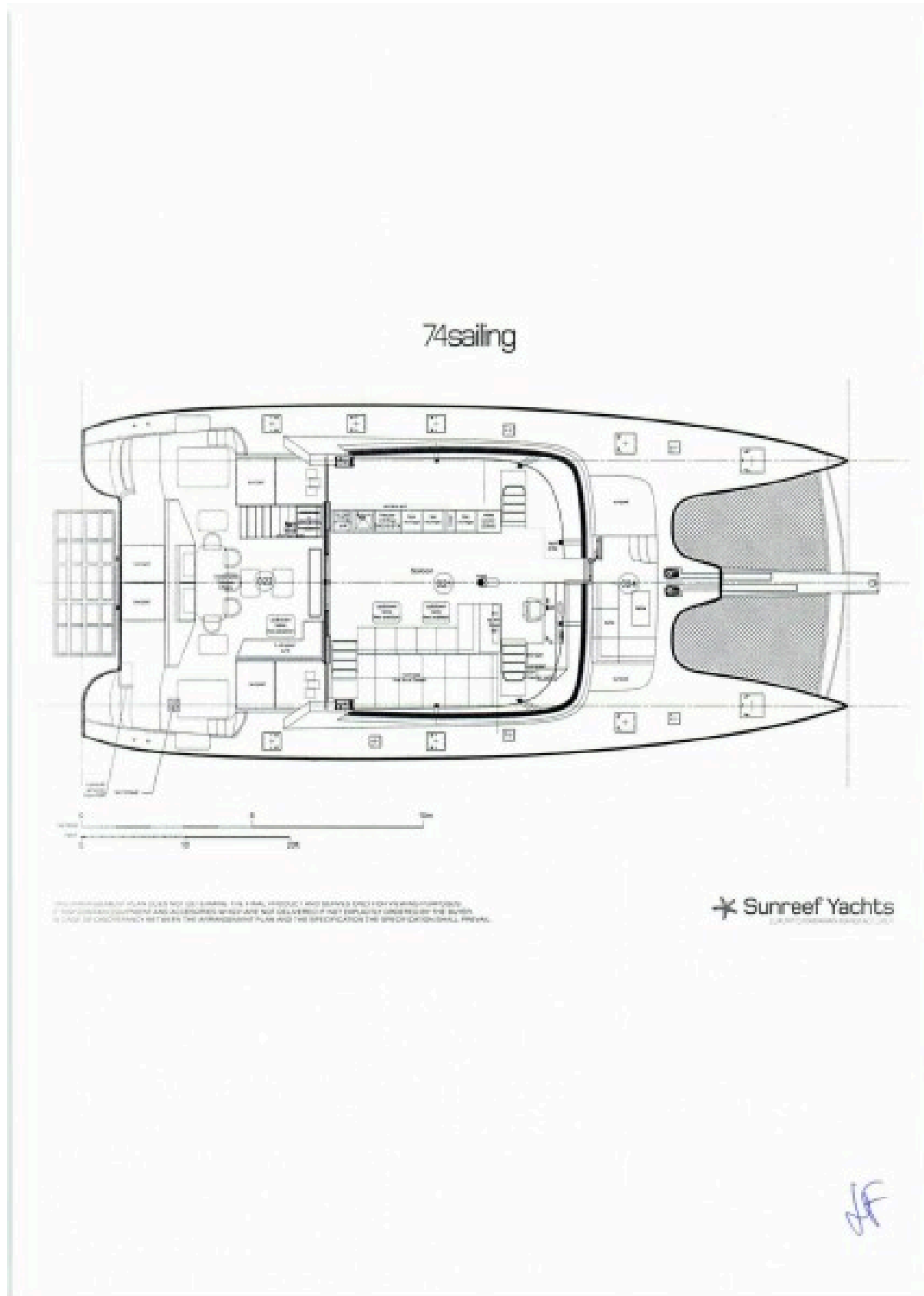
Used Sail Catamaran for sale 2018 Sunreef 74C - KAILUA



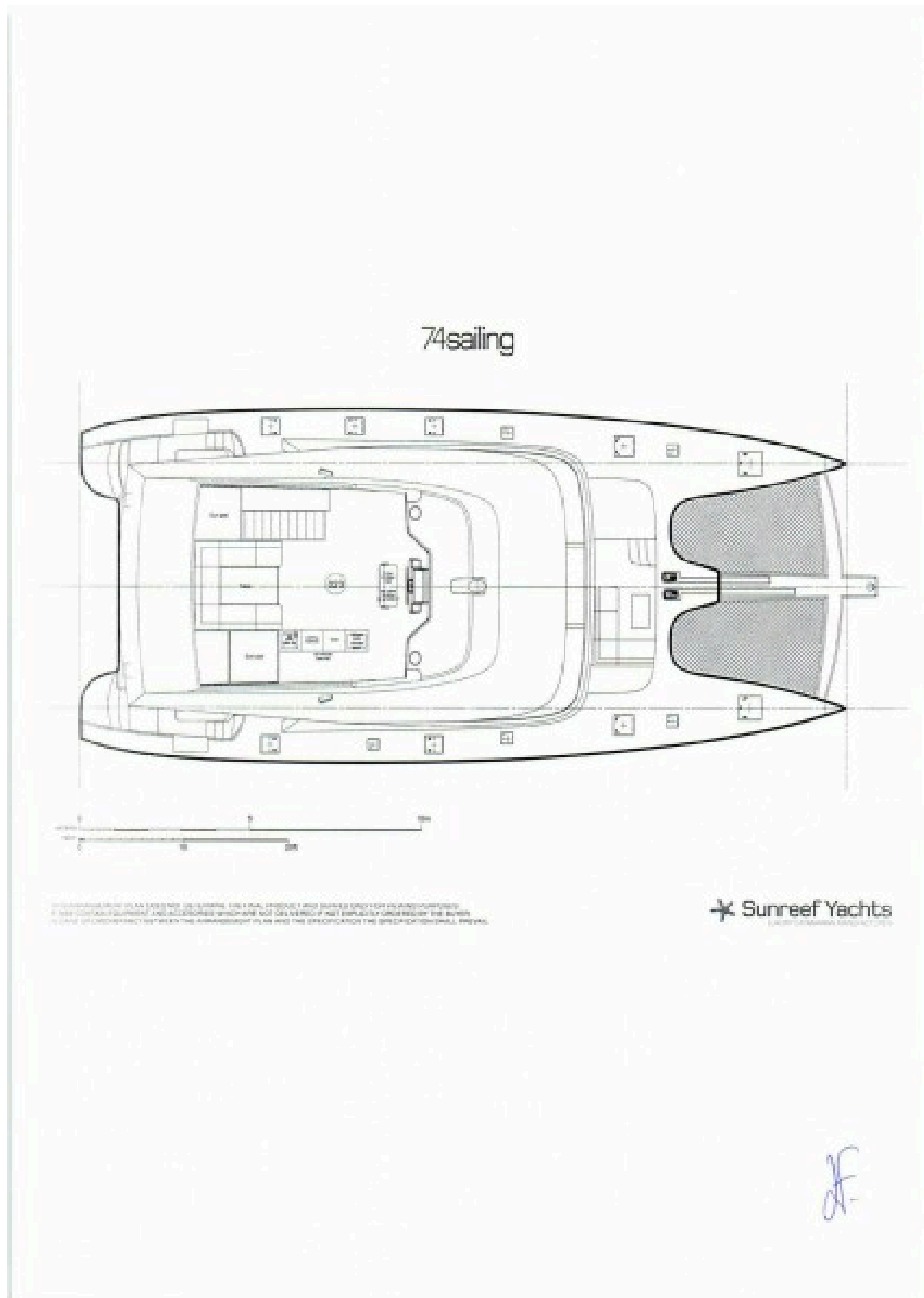
Used Sail Catamaran for sale 2018 Sunreef 74C - KAILUA



Used Sail Catamaran for sale 2018 Sunreef 74C - KAILUA



Used Sail Catamaran for sale 2018 Sunreef 74C - KAILUA



Used Sail Catamaran for sale 2018 Sunreef 74C - KAILUA



Used Sail Catamaran for sale 2018 Sunreef 74C - KAILUA