



# SWEET ESCAPE

130' (39.62m) 1993 Christensen  
Fort Lauderdale Florida United States



## OVERVIEW

**\$6,450,000**

Manufacturer:	<i>Christensen</i>		
Engines:	2 Caterpillar	Hull Material:	Fiberglass
Engine Model:	C32	Cruise Speed:	12 Knots
Engine HP:	1652	Max Speed:	17 Knots
Beam:	26' 8"	Cabins/Heads:	6 /
Max Draft:	6' 11"	Fuel Type:	Diesel
Water:	1112 G (4209.38 L)	Fuel:	9440 G (35734.27 L)



## Data Sheet

Category: Superyacht  
Subcategory: Motor Yachts  
Condition: Used  
Model Year: 1993  
Refit Year: 2022  
Beam: 26'8" (8.13m)  
Max Draft: 6' 11" (2.11m)  
LOA: 130' (39.62m)  
Cabins: 6  
Sleeps: 12  
Full Beam Master: Yes

Crew Cabins: 4  
Crew Sleeps: 8  
Maximum Speed: 17 Knots  
Cruise Speed: 12 Knots  
Fuel Type: Diesel  
Super Structure Material: Fiberglass  
Hull Material: Fiberglass  
Air Conditioning: Yes

Gross Tonnage: 279  
Stabilizers: Zero Speed  
Stabilizer Brand: Naiad  
Bow Thruster: Yes  
Fuel Tank: 9440 gal (35734.27 liters)  
Fresh Water: 1112 gal (4209.38 liters)  
Classification: ABS  
Imported: No  
Builder: Christensen (USA)  
Designer: Christensen (USA)  
Interior Designer: Christensen (USA)

## Engines/Generators

### Engine 1

Caterpillar  
C32  
Inboard  
1652HP  
1231.90KW  
Fuel: Diesel

### Engine 2

Caterpillar  
C32  
Inboard  
1652HP  
1231.90KW  
Fuel: Diesel

### Generator 1

Northern Lights  
80KW

### Generator 2

Northern Lights  
80KW

## Summary/Description

Significant improvements and upgrades have been made in recent years to enhance and modernize SWEET ESCAPE. The outcome is a blend of classic exterior styling with a contemporary, elegant interior equipped with modern-day features.

Significant improvements and upgrades have been made in recent years to enhance and modernize SWEET ESCAPE. The outcome is a blend of classic exterior styling with a contemporary, elegant interior equipped with modern-day features.

## FULL SPECIFICATION

### 1. CONSTRUCTION

Fiberglass hull and superstructure, teak decks

### 2. DIMENSIONS

#### 2.1 General

Length Overall (L.O.A.):	130.00 feet	(39.62 meters)
Beam (molded):	26.91 feet	( 8.23 meters)
Draft (loaded):	6.92 feet	( 2.11 meters)
Tonnage:	279 gross	

#### 2.2 Capacities

Fuel Capacity:	9,440 US Gallons	(3,574 liters)
Water Capacity:	1,112 US Gallons	(4,209 liters)
Watermakers:	(3) 60 GHP	
Lube Oil:	200 US Gallons	( 757 liters)
Waste Oil:	85 US Gallons	( 321 liters)

#### 2.3 Speed

Maximum:	17.0 knots
----------	------------

Cruising: 12.0 knots

### **3. MACHINERY**

#### **3.1 Main Engines**

Engine Type:

- (2) C32 Caterpillar diesels @ 1652 Hp
- Completely overhauled Caterpillar engines with almost 4 years left on an Extended Platinum Factory Warranty from Caterpillar

Gearboxes for Main Engines:

- ZF BW-256

Drive:

- Electronic low idle speed
- Auxiliary engine controls port and starboard wing stations

#### **3.2 Generators & Electricity**

Output: • 4 cylinders: R.P.M. 1800

Generators: • (2) 80 kW John Deere Northern Lights

Generator Fuel Consumption: • Approx. 4.5 gph @ 30% load  
6.1 gph @ 100% load

Shore Power:

- Atlas shore power classic spa-ii
- 100 amp cables (2) 100 amp x 100 ft

Batteries:

- 24 volt charger (2) 40 amp mastervolt

#### **3.3 Air Conditioning**

Type:

- Dometic/Marine air chilled water system
- (3) 120,000 btu compressors
- A/C Chillers serviced & rebuilt / additional pumps installed 2022

### 3.4 Other Machinery

- |                              |  |
|------------------------------|--|
| Watermakers:                 | • Village Marine Tech. (3) 60 GPH - Rebuilt                |
| Trim Tabs/Stabilizers:       | • Naiad Dynamics "at rest" / Zero Speed                    |
| Bow Thruster:                | • Naiad twin 4 blade propellers in 16" tube hydraulic      |
| Steering System:             | • Steering gear powered, hydraulic w/emergency backup pump |
| Fuel Separator & Filtration: | • Alfa Laval fuel polishing system                         |
| Sewage System:               | • Headhunter TW-HMX - New 2023                             |
| Fresh Water System:          | • (2) Headhunter Pumps Aqua – Box Multi stage              |

## 4. **COMMUNICATION, NAVIGATION & ENTERTAINMENT SYSTEMS**

### 4.1 Communication Systems

SATcom:

- KVH V7IP + iridium handheld
- V-Sat High Speed Internet

VHF:

- (2) ICOM IC-M506
- (2) ACR gmdss handheld

Batteries:

- (16) 6 volt, in forward of Portuguese bridge

### 4.2 Navigation Systems

- |                   |                                   |
|-------------------|-----------------------------------|
| Radar:            | • Furuno 96 mile + Garmin 96 mile |
| Gyrocompass:      | • Simrad satellite compass gn70   |
| Magnetic Compass: | • 6" Ritchie                      |
| Auto Pilot:       | • Simrad ap70 mk2                 |
| Depth Sounder:    | • Furuno fcv-587 + in GPS map     |

GPS:

- Nobletec Time Zero

- Garmin GPS map 8617
- Garmin GPS map 7610 (lazarette)
- Furuno gp-33
- Garmin GPS map 741xsv in (captain's cabin)

Ships computer:

- Apple mac 5 (2) monitors (Bluetooth)

AIS:

- Furuno universal

Laser plotter:

- GPS map + TimeZero

Wind/speed log:

- in GPS GMI 20's + B&G GPS + GMI 20's

Navtex:

- Furuno hs 2003 + Furuno nx-500

- Furuno br 510 bnwas system
- Hailer: Raytheon Ray 430
- Peplink marina Wi-Fi router
- Viasat

#### 4.3 Entertainment System:

##### a. Video Equipment

TV's:

- 55" HDTV - Main Salon
- 55" HDTV - Main Master Stateroom
- 55" HDTV - On Deck Master
- 55" HDTV - Sky Lounge
- 55" HDTV - Outdoor Screen Main Deck
- 55" HDTV - VIP Lower Deck
- 32" HDTV - Starboard Twin Stateroom
- 32" HDTV - Port Twin Stateroom
- 32" HDTV - Twin Bunk Cabin
- 32" HDTV - Crew Mess
- 18" TV - Galley

##### b. Audio Equipment

- Control 4 integration / share bridge
- ViaSat installed with unlimited data contract (YouTube TV / Netflix / HBO / Direct TV installed on all media stations)

## 5. GALLEY & LAUNDRY EQUIPMENT

## 5.1 Main Galley Equipment

### Cooking Equipment:

- (2) Miele ovens model H6580BP
- Sharp microwave oven
- Hoshizaki ice maker KM61BAH

### Refrigeration/Freezer:

- (2) Miele refrigerators
- Perlick double drawer freezer HA24FB
- (2) Miele F1813 SF freezers

### Dishwasher:

- Miele G7856

## 5.2 Crew Galley/Mess Equipment

### Cooking Equipment:

- Microwave Magic chef
- Breville toaster
- Griddle by Cuisinart
- (2) Black and Decker kettle

### Refrigeration/Freezer:

- Blomberg fridge model K6031OHU
- deck fridge/ freezer
- Bridge deck freezer Frigidaire chest
- Bridge deck icemaker
- (2) aft deck refrigerators Sub-Zero drawers
- Aft deck refrigerator Edgestar wine chiller
- Freezer bosun locker

### Other:

- Nespresso machine
- Black and Decker drip machine

### 5.3 Laundry Equipment

#### Main Laundry Equipment

- (2) Washers: Miele model W3037
- (2) Dryers: Miele model T8003
- New iron: Rowena perfect steam pro DG8624U1
- Vacuums: Miele handheld Triflex HX1
- Miele compact C1 turbo team
- Hoover FH11300

## 6. TENDERS & TOYS

Tenders: 12.5' inflatable tender 15 Hp Mercury Outboard

Other:

- (2) Jet Skis 1100 cc
- (2) Jet Skis 1800 cc - New 2023

## 7. DECK EQUIPMENT

Anchor Windlass System: Twin Muir Vertical, Hydraulic

Aft Warping Capstans: Maxwell Hydraulic, To Port and Starboard

Anchors: FORTRESS FX-37 as spare

Anchor Chain: (2) traditional style w/400' chain

Boat Crane and Davits:

- Nautical structures hmc1700 at fore deck
- Roskelley/olsson hydraulic, at bridge deck

Passerelle: Marquipt (purchased October 2023)

Swimming Platform:

- TNT Lift powered swim platform
- Large inflatable

## 8. SECURITY, FIRE FIGHTING & SAFETY EQUIPMENT



### 8.1 Security Equipment

CCTV System: Elbex CCTV System w/ (7) cameras

Cameras: (7)

Monitors: (2) Control 4 System

### 8.2 Fire Fighting Equipment

Fire Control System:

- Kidde Halon 1301
- Tank Aft In E/R Pyrochem Pcl 300 Wet Agent Type
- Tank In galley w/ hood
- Outlets & Remote Release Station
- (2) Scott Scba Sets w/(4) Tanks
- (2) 220 V Fire/Bilge Pumps on Manifold w/hydrants
- Aft + Honda gasoline crash pump

Fire Extinguishers:

- (4) 2 lb
- (17) 2.5 lb
- (5) 5 lb
- (14) 10 lb dry powder
- (1) 5 lb CO2
- (2) 2.5 gallon foam
- fire panel

### 8.3 Safety Equipment

Life Rafts:(2) REVERE 20 person

Life Rings:

- (4) rings w/strobes
- (2) w/throw

EPIRBS:

- ACR battery expires June 2027
- Hydrostatic release expires May 2024

Flares: as per regulation ISM

Medical Equipment:

- Medaire
- (3) Offshore medical packs + AED & oxygen kit
- (21) Drager EEBD Smoke Hoods
- Life jackets, type I (43) adult, (13) child + (3) infant
- Life jackets, other twelve type III + fourteen inflatable type
- Immersion suits: (16) adult + (4) child
- (2) 220 v fire/bilge pumps on manifold w/hydrants fore & aft + Honda gasoline crash pump

## **9. ACCOMMODATIONS**

SWEET ESCAPE offers accommodation for up to 12 guests in 6 staterooms, comprising of 3 king staterooms, 2 convertible twin/king staterooms, and 1 single bed with an adjacent bunk. Each stateroom is equipped with an ensuite bathroom.

**MASTER STATEROOM:** Located on the Lower Deck, amidship, this full-beam stateroom features a Sleep Number® King bed, a mini-refrigerator, a desk, and a settee. The ensuite amenities are separate for His and Hers, including a Jacuzzi tub with an overhead shower, sink, head, walk-in closet, and vanity dresser for Her, as well as a steam shower with a bench seat, head, sink, and walk-in closet for Him. The entertainment system includes Bose surround sound, a 60" HDTV with an individual satellite receiver, and an iPod docking station. Port holes in the master stateroom, as well as in the ensuite, allow for abundant natural light if desired, with a complete blackout option also available. A combination safe is located in the Master Stateroom.

**ON-DECK VIP KING STATEROOM:** Positioned on the main deck forward, this stateroom offers a Sleep Number® King bed with picturesque views and an ensuite with a stall shower. The entertainment system features Bose surround sound, a 55" HDTV with an individual satellite receiver, and an iPod docking station.

**LOWER DECK VIP KING STATEROOM:** Located mid-ship to aft on the lower deck, this full-beam Stateroom boasts a walk-around Sleep Number® King bed. The ensuite includes an oversized shower with a bench seat, head, and sink. An entertainment system with Bose surround sound, a 50" HDTV with an individual satellite receiver, and an iPod docking station complete the amenities.

**CONVERTIBLE TWIN/KING STATEROOM TO STARBOARD:** Found on the lower deck amidships, this stateroom offers two twin-sized beds (extra-long) convertible to 1 King bed and an ensuite with a shower. The entertainment system includes Bose surround sound, a 36" HDTV, and an iPod docking station.

**CONVERTIBLE TWIN/KING STATEROOM TO PORT:** Also situated on the lower deck amidships, this stateroom offers two twin-sized beds (extra-long) convertible to 1 King bed and an ensuite with a shower. It features an entertainment system with Bose surround sound, a 36" HDTV, and an iPod docking station. This stateroom shares the ensuite bathroom with the 6th guest stateroom.

**GUEST STATEROOM:** Designed for one guest, this stateroom includes a Single bed with an adjacent bunk bed suitable for children or staff. It has a hanging locker, drawers, a 36" HDTV with an individual satellite receiver, and shares its ensuite bathroom with the Port side King/Twin Convertible Guest Stateroom.

All staterooms are equipped with individual satellite receivers and individual climate controls

## **10. KEY FEATURES**

- Significant improvements and upgrades have been made in recent years to enhance and modernize SWEET ESCAPE. The outcome is a blend of classic exterior styling with a contemporary, elegant interior equipped with modern-day features.
- SWEET ESCAPE offers flexible accommodations for up to 12 guests in 6 staterooms, including a full-beam master suite with his and hers ensuites.
- Shallow draft is ideal for Bahamas cruising
- Foredeck sun pad can be converted into a multifunctional dining area
- Caterpillar engines have been completely overhauled and come with almost 4 years remaining on an Extended Platinum Factory Warranty from Caterpillar
- Equipped with Naiad Zero Speed Stabilizers
- Features V-Sat High-Speed Internet capability
- SWEET ESCAPE boasts a successful charter history, with over \$450,000 in confirmed charter contracts for 2024 alone; these contracts are transferable to the new owner.

## **11. REFIT HISTORY**

### **2023 Rybovich Shipyard**

- Redid Ships Stability Booklet with Flag (Murray & Associates commissioned the project with Safe Harbor Rybovich)
- New exhaust jackets one main engines
- Props pulled & sent for cleaning
- Anchors refurbished
- All hydraulics including critical gear refurbished & block replaced in E/R
- Vibration analysis by Rybovich (they found nothing)
- (2) Fresh Air Makers added to reduce condensation.
- Galley / Sky Lounge insulation added above overheads to minimize sweating
- All Annuals as per Flag State Requirement
- New furniture on Bridge Deck
- Procured (2) 1800 Jetskis / total of 4 jetskis
- All deck awnings & deck cushions replaced / reupholstered to modern grey contemporary

### **2021/2022 Upgrades - Derecktors Shipyard Dania Beach:**

- Rebuilt C32 Caterpillar Main Engines - Rebuild process went all the way down to new blocks & cranks.

- • 5-year Platinum Warranty with Caterpillar
- • All engine mounts including transmission mounts & couplings sent to Lo-Rez to be refurbished
- • Shafts + Mounts reinstalled by Datum
- • Rebuilt network and added in additional access points
- • Zero Speed / At Rest Stabilizers installed. All new hardware throughout. Murray & Associates commissioned the project to Class Spec.
- • ViaSat installed with unlimited data contract (YouTube TV / Netflix / HBO / Direct TV installed on all media stations)
- • Control4 Entertainment System rewired / replaced lighting panels & sound matrix. System is now fully functional throughout Vessel
- • Rebuilt water makers / replaced high pressure hoses & membranes
- • Rebuilt UPS battery backup for Control4 when changing over power
- • A/C Chillers serviced & rebuilt / additional pumps installed for better servicing of Chillers / replaced all accessible insulation throughout Vessel on chilled water loop / every air handler was serviced / replaced / reconditioned
- • New Navigational Computers / New SAT compass
- • NEMA 2000 backbone rewired to eliminated faults on tank sensors
- • All Annuals as per Flag State Requirement
- • HVAC - Rebuilt/Service Compressors - replaced insulation throughout Yacht (where possible)

## **2021/2022 Interior**

- • Carpet replaced throughout Vessel
- • New Flooring in Galley & all the way through Crew area
- • Bridge carpet removed & the original flooring refurbished to match Sky Lounge corridor
- • Twin Cabins (2) due to stabilizer installation rebuilt / new wallpaper & (4) new mattress
- • Wallpaper replaced lower deck corridor
- • All Salon & Sky Lounge furniture reupholstered to more modern grey contemporary look & feel including header boards.
- • Sky Lounge bar area reupholstered & changed to modern grey contemporary look & feel including header boards.
- • Helm Chair reupholstered including additional Bridge walling

## **2017 Refit includes:**

- • The Gym has been changed into a 6th stateroom
- • New sun pad on the Portuguese deck that doubles as a dining area for 10 guests
- • New Venetian plaster in Main Salon with Swarovski crystal chandelier
- • New propellers
- • All new interior furniture, new carpets and wooden Amtico flooring in different areas New wallpaper
- • New wine cooler
- • Sound proofing and insulation installed all over the vessel including over the generators and engine room ceiling
- • UV film installed on all windows and portholes
- • All major damaged paintwork redone on the exterior
- • Day head added to Main Salon
- • New Atlas power management system with retractable Glendinning shorepower cords
- • Aft swim platform extension, 6ft Submersible swim platform

- • Bow davit (crane) to stow two jet skis on bow
- • All new air conditioning
- • All ensuite bathrooms remodeled
- • LED lights throughout
- • All equipment in bridge being updated, HD TV's, internet KVH, control-4-home entertainment system, hard drive movie server. Piano in main salon.
- • 75" HDTV in main salon with surround sound.
- • All new galley appliances, all new refrigeration.
- • All exterior soft goods in shades of turquoise, navy and white.
- • All new deck furniture, cushions and new sun awnings.
- • Mobile network booster which should provide fast/reliable internet all over the Exumas

**Fall 2012:**

- • All new interior in all the Guest Staterooms.

**November 2011:**

- • New engines
- • New generators
- • New soft goods in the main salon and skylounge
- • (2) Blu-ray added

**2010:**

- • New refrigeration
- • New A/C
- • New electrical
- • New pumps

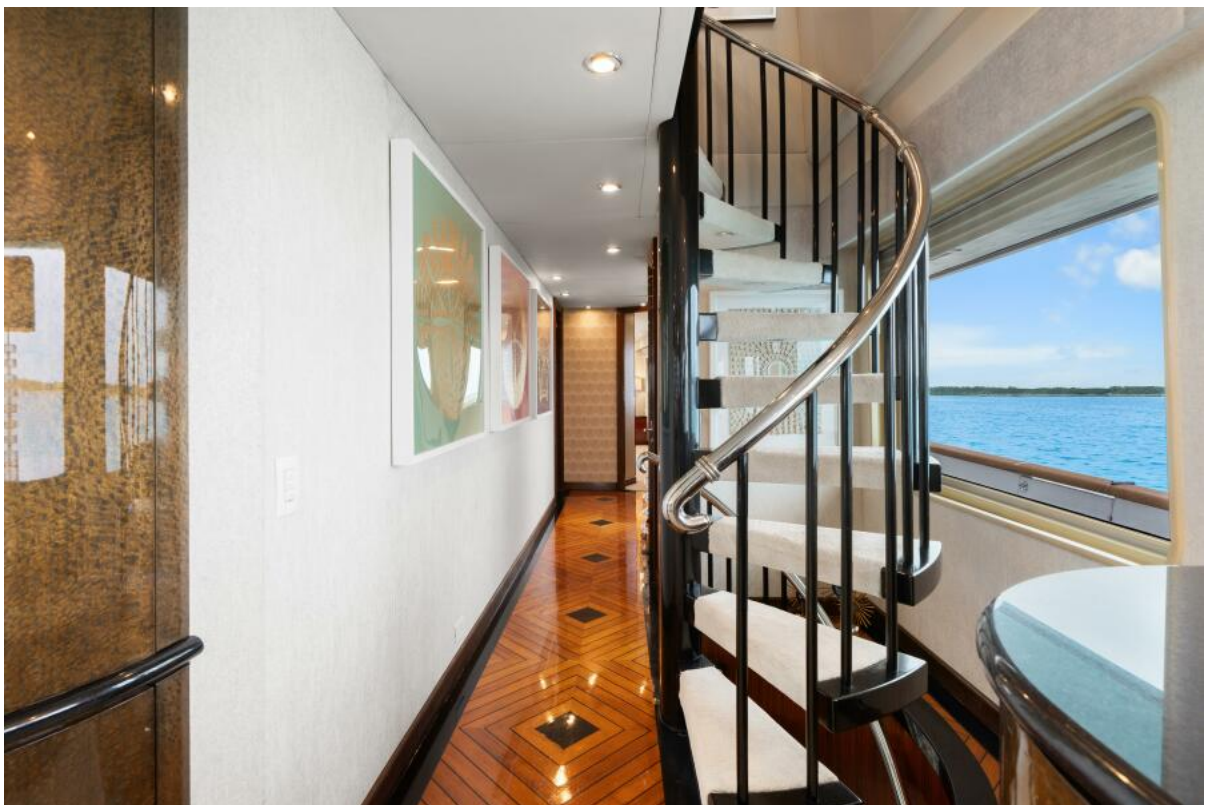








































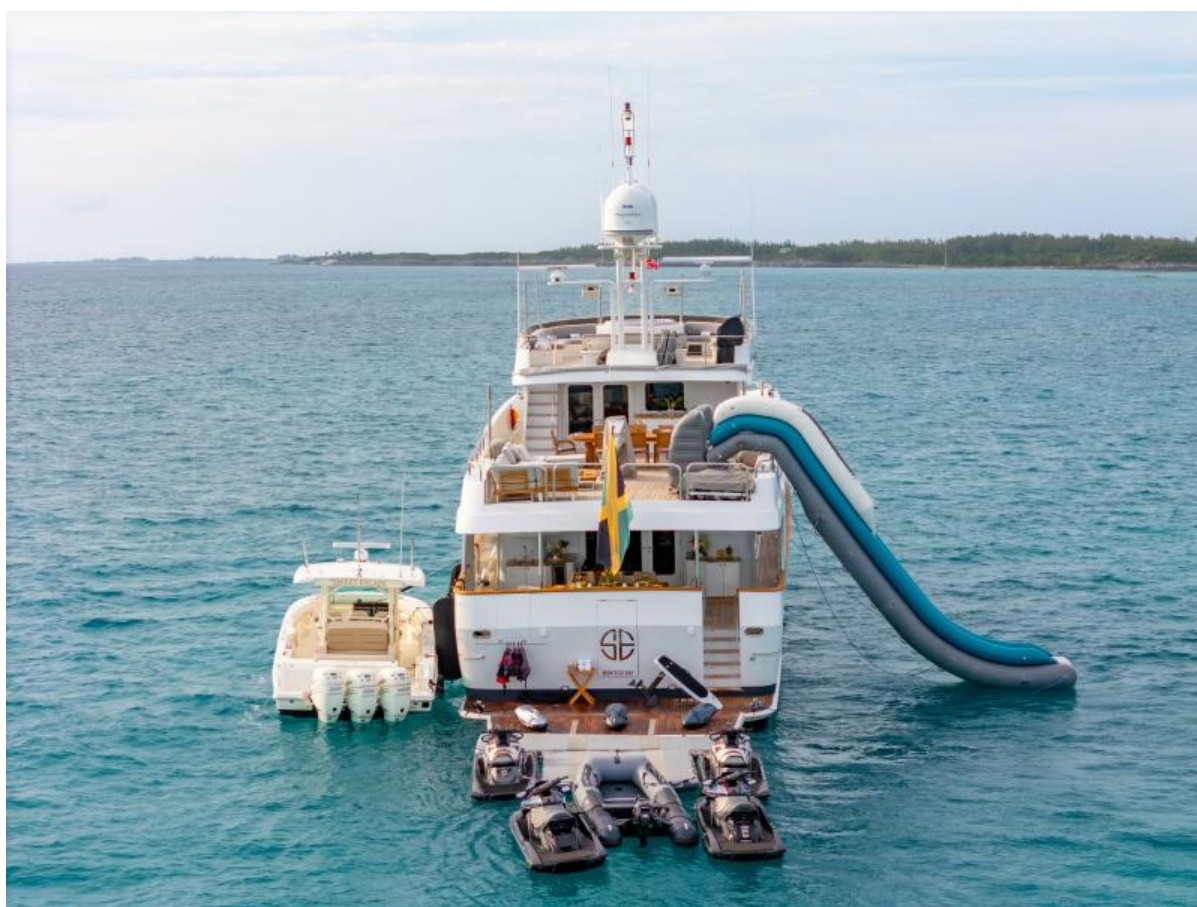


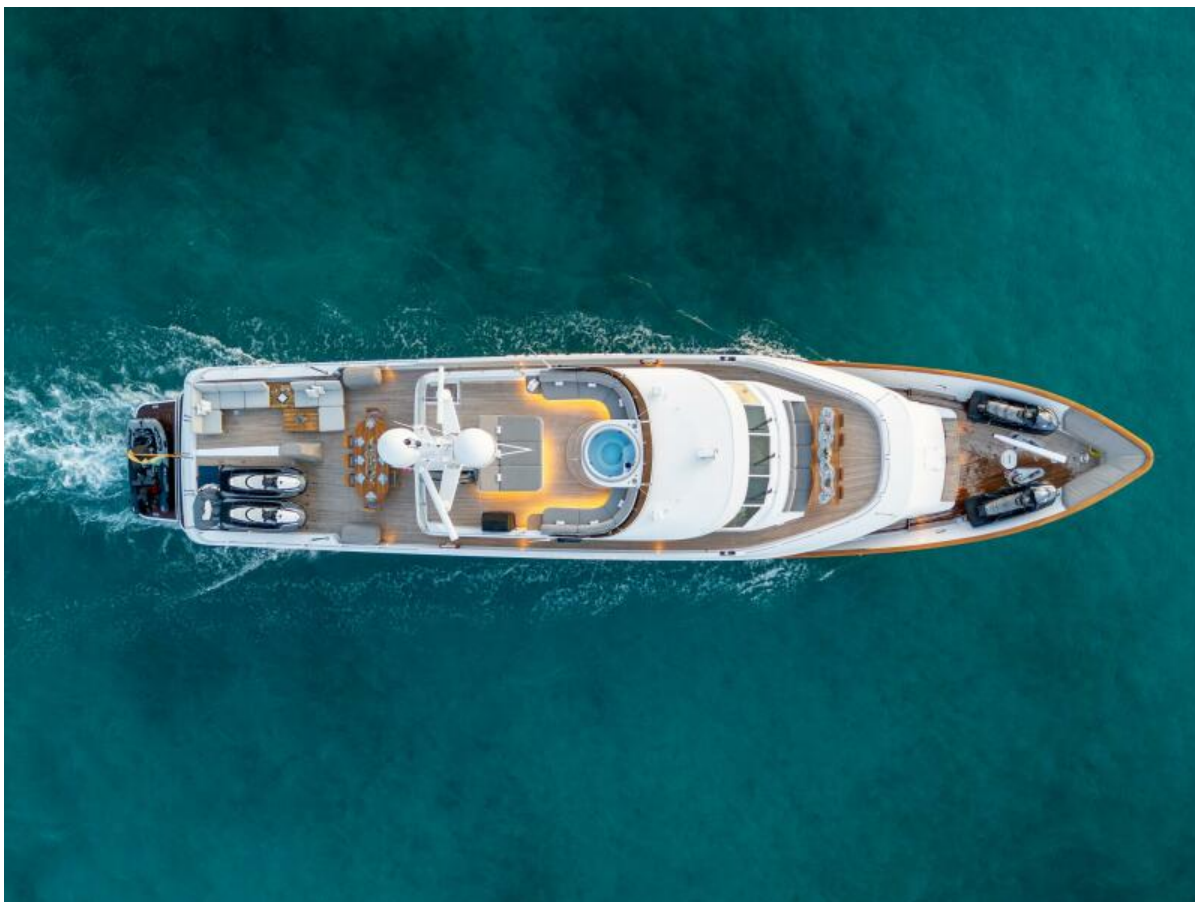




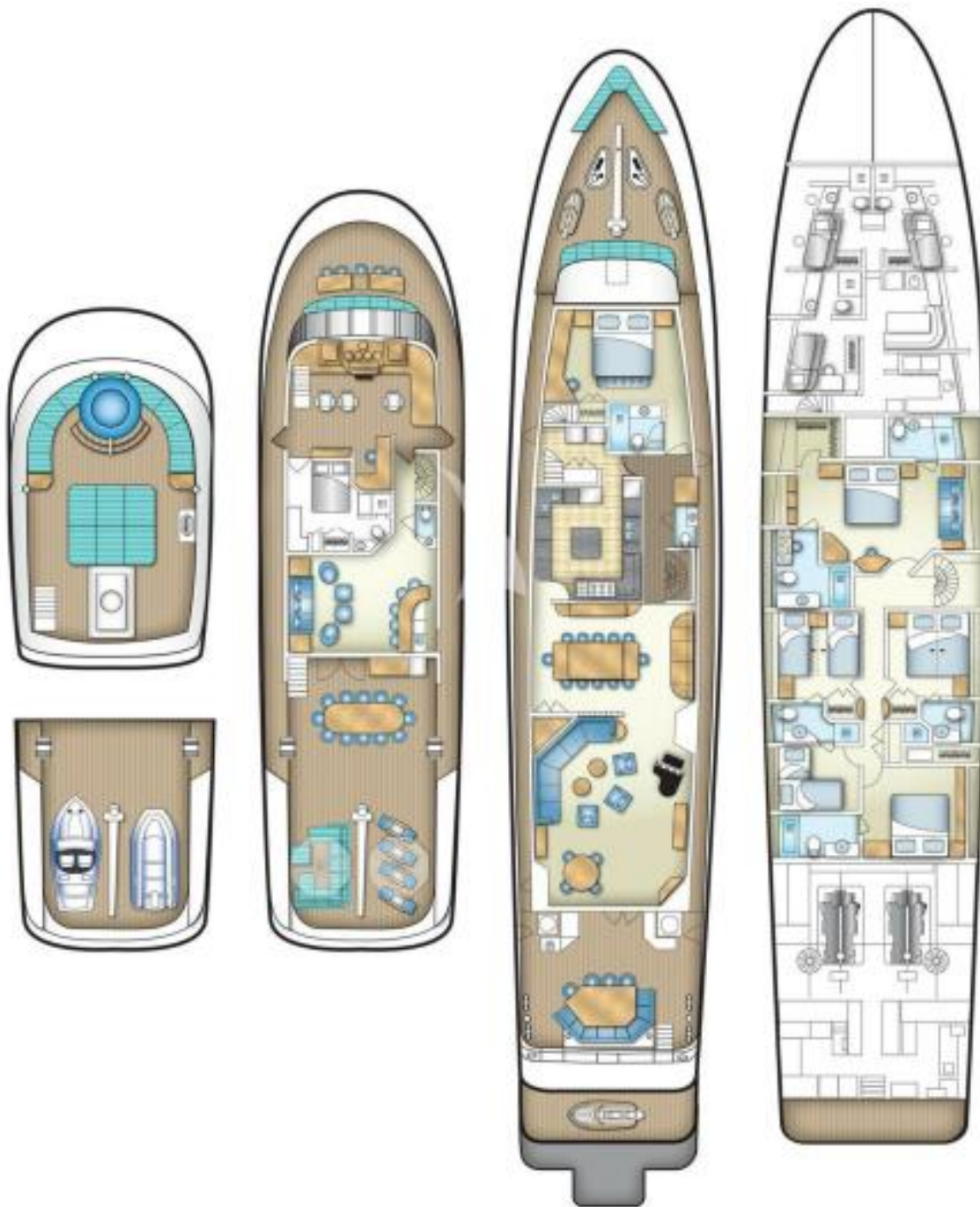












SWEET ESCAPE, 130' (39.62m) Christensen Motoryacht, 1993/2022