



# PRETTY LADY

59' (17.98m) 2003 Ferretti Yachts 590 Motor Yacht  
Ft. Lauderdale Florida United States



## OVERVIEW

**\$499,000**

Manufacturer:	<i>Ferretti Yachts</i>		
Engines:	2 D2840LE403	Hull Material:	Fiberglass
Engine Model:	D2840LE403	Cruise Speed:	26 Knots
Engine HP:	1050	Max Speed:	34 Knots
Beam:	17' 3"	Cabins/Heads:	3 / 3
Max Draft:	5' 2"	Fuel Type:	Diesel
Water:	174 G (658.66 L)	Fuel:	924 G (3497.72 L)



## Data Sheet

Category: Motor Yachts  
Condition: Used  
Model Year: 2003  
Documented Year: 2003  
Beam: 17'3" (5.26m)  
Max Draft: 5' 2" (1.57m)  
LOA: 59' (17.98m)  
Cabins: 3  
Sleeps: 6  
Heads: 3

Crew Cabins: 1  
Crew Sleeps: 1  
Maximum Speed: 34 Knots  
Cruise Speed: 26 Knots  
Fuel Type: Diesel  
Hull Material: Fiberglass  
Hull Shape: Deep Vee  
Air Conditioning: Yes

Bow Thruster: Yes  
Fuel Tank: 924 gal (3497.72 liters)  
Fresh Water: 174 gal (658.66 liters)  
Holding Tank: 50 gal (189.27 liters)  
Builder: Ferretti Yachts  
Designer: Ferretti Yachts  
HIN/IMO: XFA59003A203

## Engines/Generators

### Engine 1

D2840LE403  
D2840LE403  
Inboard  
1050HP  
782.99KW  
Fuel: Diesel  
Hours: 1817  
Hours Date: 03-15-2024  
Year: 2003  
Location: Port

### Engine 2

D2840LE403  
D2840LE403  
Inboard  
1050HP  
782.99KW  
Fuel: Diesel  
Hours: 1820  
Hours Date: 03-15-2024  
Year: 2003

### Generator 1

Kohler  
2KW  
Hours: 3457  
Hours Date: 03/15/2024

## Summary/Description

PRETTY LADY represents a great example of a US specification 590 Ferretti originally sold by Ferretti of America. She has 3 cabins, 3 heads and lots of outdoor spaces. Professionally maintained, she presents well and is seriously for sale by her owner of over 12 years.

## WALKTHROUGH

Boarding **PRETTY LADY** from a floating dock is easy via her wide swim platform.

Side deck access over the gunwales is easy from a fixed dock.

The large teak aft deck has built-in seating, steps to the side deck, access to the centerline passerelle and a ladder to the flybridge.

The centerline salon glass door opens to the salon with a U-shaped settee and table to

Port and a single matching seat to starboard followed by a curved three door cherry locker going forward.

Next, three steps lead to the lower level galley and spacious laundry area.

Up three steps to the lower station to port are a curved settee and table to starboard.

Five carpeted steps lead below. Immediately to starboard is a twin berth lower cabin followed by the guest head with two entry doors.

Forward is a queen size VIP cabin with a private head and stall shower.

The Master cabin is amidships and features an athwartships queen size berth and a surprisingly large head that nearly spans the beam of the vessel.

Flybridge access is from steps aft of the lower helm or from the aft deck ladder.

The helm area is to starboard with a pop-up electronics locker, a bar area with a fridge, grill and sink aft. To port is curved seating group that extends aft across the beam around a fixed height dining table.

The forward end of the bridge is shaded with a Bimini top.

## SALON

The Salon is entered from the aft deck via a glass and stainless steel sliding door, slightly to starboard in a mostly glass aft bulkhead of the salon.

Immediately to starboard is a curved leather seat with storage below. Next forward is a curved cherry cabinet with 3 doors concealing general storage. The Cherry top of this cabinet contains a Bose Lifestyle AM/FM/CD stereo. Just forward are the steps to the galley. Above are two Roman shades over the house side windows.

To port is an L-shaped leather sectional with storage below. This sectional terminates into a built-in Cherry end table and a built-in leather single seat that matches the sofa. A high gloss Cherry table with hidden leaves that slide out is a dining height lies in front of the sofa. Outboard are matching Roman shades above the sofa.

Also in the salon are Bose Mini Cube speakers, 8 dimmable halogen lights, an attractive ceiling detail, digital A/C controls and a carpeted sole.

Forward and up two steps is the helm area.

## **GALLEY**

The Galley is down three carpeted steps from the salon on the starboard side but open to the salon area from above.

- Carpeted sole
- Granite counter tops
- (2) Undermount stainless steel sinks
- (11) Cherry cabinets
- (1) Cherry drawer
- Trash compartment
- Opening stainless steel porthole
- Bosch 4 burner electric cooktop with a sea rail
- Premium refrigerator/freezer
- Cuisinart built-in microwave oven
- Garbage disposal
- Isotherm icemaker behind a Cherry door

## **LAUNDRY ROOM**

Entered via the galley and inboard to port is the laundry room with the following features:

- Carpeted sole
- (2) overhead lights
- 2 door pantry locker
- Open shelving
- Miele Novotronic T1570C clothes dryer
- Miele Novotronic W1930 clothes washer
- High water alarm
- Magic Chef refrigerator freezer
- Sink with hot and cold removable spray faucet
- Storage locker outboard
- Digital A/C control

## **LOWER HELM**

Up two steps from the salon is the large lower station and raised dinette area excellent for viewing the scenery while underway.

This area has the following features:

- Carpeted sole
- 6 " Urania magnetic compass
- Furuno NavNet 8" plotter
- Garmin GPS Map XSV with 12" touchscreen
- Simrad AP22 autopilot
- Raytheon Tridata, depth speed indicator
- VDO fuel tank gauge

- VDO water tank gauge
- Dometic A/C system control
- VDO rudder angle indicator
- VDO engine gauges, tank, water temp, oil pressure and gear pressure
- Engine hour meters in tachometer
- Switches for (4) bilge pumps, shower pump, black water pump, bilge alarm, generator controls, windlass, trim tabs, horn and engine start/stops
- Generator hour meter
- Vetus bow thruster control
- Helm wheel
- Rexroth electronic engine controls
- Engine alarm system
- Engine key switches
- Emergency stop button
- SeaFire system indicator
- Main electrical panel outboard of helm
- ICOM IC-M502 VHF radio
- Jabsco searchlight control
- Bench style helm seat for two
- Storage well, starboard aft
- Port and starboard opening windows
- Six lights overhead
- Six steps up to bridge hatch just aft of the helm
- Stainless steel windshield
- (2) wipers with washers

Also in this area but to starboard is a curved dinette with table and storage below to seat 4-5 people. An attractive Cherry ceiling detail is above.

## **ACCOMMODATION FOYER**

From that starboard side of the wheelhouse area are five carpeted steps leading to the accommodations.

A twin cabin is to starboard. Next forward is the dual access guest head.

To port is the Master cabin entrance and all the way forward the ensuite VIP cabin.

All the Cherry cabin doors are arched above and below.

## **TWIN BERTH CABIN**

Entered via the forward end, just inside the door is a full length hanging locker. Next aft is a two door cabinet with a 18" flat screen TV above. Down two steps aft are twin single berths with a small nightstand between.

There are two drawers under the inboard berth. Above the outboard berth is a hull side window with an opening porthole with drapes for privacy.

Each berth has a reading light and the upper aft bulkhead is mirrored.

Also in the cabin are 3 overhead halogen lights and digital A/C controls.

Forward is a secondary access to the guest head.

## **GUEST HEAD**

The guest head has a fiberglass inner liner sole with a Tecma toilet, a molded sink with a stone counter top, two mirrored medicine cabinet doors, an opening porthole with drapes, an A/C vent, two lights and a handheld shower with a unique pull down shower enclosure curtain.

## **MASTER CABIN**

The Master cabin has an athwartship tapered queen berth off the outboard hull side.

Above the berth is a hull side window with two opening portholes covered with a Roman shade. There are night stands and reading lights fore and aft of the berth. Below the berth are two large drawers.

Forward in the cabin is a two door hanging locker and upholstered panels on the bulkhead.

At the foot of the berth aft is a corner cabinet with a unique half round sliding vanity top, a light, two cabinets below and a 18" flatscreen TV above.

The aft bulkhead has four mirrored panels, a small locker and an inset art niche plus the entrance to the cabin's head.

Over the berth is a soffit area with rope lighting in the perimeter and a sliding shade over the skylight from above.

## **MASTER CABIN HEAD**

One step down and forward is the head's vanity with a storage cabinet below and a stone countertop with an undermount sink. Outboard is a storage cabinet and an opening stainless steel porthole behind drapes.

Down two steps towards the centerline is a Tecma toilet, five storage cabinets, open shelving and further inboard a stall shower with a plexiglass door and sidelight, a handheld or wall mountable fixture, a light and an exhaust fan.

## **VIP CABIN**

All the way forward is the VIP cabin with a queen size berth off the forward bulkhead with an inset mirror area and two reading lights. Above the berth is an escape hatch with a sliding privacy shade. Either side of the berth are small built-in nightstands at the hull sides. One larger drawer is at the foot of the berth facing aft.

Going aft on both the port and starboard sides are triangular cabinets with one cabinet door each. Above the cabinets are an opening stainless steel porthole each side with privacy drapes.

An 18" flatscreen TV and a two door hanging locker are aft to starboard. Aft to port is the ensuite head.

Also in this cabin are three overhead lights, digital A/C controls and a carpeted sole.

## **VIP HEAD**

The head area has a curved front vanity with a stone counter top and undermount sink with mirrors above. The toilet is a Tecma model. The stall shower has clear plexiglass door, a light and a handheld or wall mountable fixture. Also in the head is a medicine cabinet, an A/C vent and an opening stainless steel porthole with drapes.

## **FOREDECK / SIDE DECKS**

- Fiberglass non-skid decking
- Stainless steel bow rail with life line



- Stainless steel anchor chute with bow roller
- Bruce 66 lb. anchor
- 200' chain rode
- Quick anchor windlass
- Salt water washdown in chain locker
- (2) foredeck hatches for anchor locker
- Sunlounge cushions with cover for 4 people
- Dual spring line cleats
- International navigation lights
- Remote spot light
- (2) windshield wipers/washers
- Textulene side windshield covers
- (2) windshield wipers
- Port and starboard hinged rail breaks

## **AFT DECK**

- Teak over fiberglass decking
- Boat deck hard top over aft deck
- (6) overhead lights in overhead
- 24" life ring
- Bench seat with storage below and removable cushions above
- Centerline passerelle
- Besenzoni passerelle controls
- (2) teak steps to passerelle
- Storage in starboard pilaster
- 7 step teak and stainless ladder to FB
- Aft deck sink with fresh and salt water faucets to starboard
- Hinged covers over stern cleats with dock line storage
- (2) teak steps port and starboard to side decks
- Centered hatch to engine room
- Unique fold-up port side section of aft salon bulkhead glass
- 3' x 4' glass and stainless steel table stores against aft glass bulkhead
- (2) Bose stereo speakers
- (2) clamp on rod holders
- (3) side Dacron storage covers to keep aft deck clean
- Large scuppers aft

## **SWIM PLATFORM**

- Fiberglass non-skid decking
- 240 V50 amp Glendenning Cable Master
- Dockside water inlet
- Marine Tel/TV inlet fixture
- Shower head on hose with mounting bracket
- Single step to aft deck with hinged gunwale
- Hydraulic passerelle
- Lazarette hatch lifts to reveal a cavernous storage area
- Bilge pump with high water alarm
- Besenzoni hydraulic steering activator

## FLYBRIDGE

- Fiberglass non-skid sole
- Accessible from aft deck and lower helm
- Sunlounge with storage below and cover to port
- 2 burner electric grill under hinged FRP top
- Isotherm refrigerator
- U-shaped seating with table and storage below aft
- 4 bow bimini top
- Venturi plexiglass windscreen
- ACR EPIRB
- Eurovinil 8 person life raft
- (2) Bose stereo speakers
- Fixed reclining lounge port side of helm

## HELM EQUIPMENT

- Helm wheel
- Rexroth electronic engine controls
- Vetus bow thruster controls
- ICOM IC M504 VHF
- Jabsco searchlight control
- Simrad AP 22 autopilot
- Raymarine ST60 Tridata
- Garmin GPSMAP 7612Xsv touchscreen
- VDO Rudder angle indicator
- VDO tachometer, water temp gauges
- Helm seat with cover
- Switches for trim tabs, horn, windlass, console actuator
- Engine start/stop and light switches
- Raymarine ST-60 compass

## ARCH

- Fiberglass radar arch with the following:
- KVH TracVision 4 SAT dome
- SAT TEL dome
- GPS sensor
- Glomex Terrestrial TV antennae
- Dual stainless steel trumpet horn
- Garmin Radome
- (2) VHF antennas
- Forward Nav light
- Aft Nav light
- Anchor light
- (2) stereo speakers

## AFT CREW CABIN

- Entrance via port side pilaster door, four steps down – currently used for storage
- (2) portholes



- Bow thruster breaker
- Engine room fire system pull handle
- (2) battery shut-off switches and battery parallel switches
- (2) overhead lights
- Single berth

## ENGINE ROOM

- Entrance via hinged hatch on the aft deck
- 6 step entrance ladder
- Painted Diamond plate sole
- Dual Racor 1000 fuel filters with vacuum gauges for each main engine
- SeaFire 19lb. FM 200 fire suppression system
- 24 volt black water pump
- 24 volt fresh water pump
- 24 volt grey water pump
- Electric water heater
- Dual compressor Dometic chilled water A/C system 24,000 BTU each
- A/C chilled water pump
- A/C raw water pump
- Incandescent DC overhead lights
- Steering system pump
- Trim tab system pump
- (5) bilge pumps
- Single FRP 924 gallon fuel tank with site gauge
- (2) crash pump valves off main engine plumbing
- Hydraulic passerelle pump
- Engine room blower
- ZF 550 V-drives with 1:97 to 1 ratio
- (2) 31" x 46" 5 blade main propellers
- 2.75" diameter stainless steel shafts
- (3) polyethylene water tanks - 174 gallons total
- (1) 50 gallon polyethylene waste tank
- Racor 900 fuel filter for generator

## ELECTRICAL

- 12/24 volt DC system
- 120/240 volt AC system 60Hz
- Charles 60 amp battery charger
- (4) 12 volt engine start batteries, 24V system
- (4) 12 volt house batteries, 24V system
- (1) 12 volt generator battery
- Kohler 20kW generator in sound shield - 3457 hours
- Generator battery shut-off switch
- Isolator transformer
- Glendenning 50 amp cable reel
- Engine room circuit breaker panel with (14) 24V breaker protected circuits
- MAN engine control boxes
- Lower helm electrical panel with the following equipment:
- (5) digital volt and amp meters including charge rate

- Ship's schematic with pump, battery and Nav light indicator
- (6) breaker protected 24 Volt circuits
- (9) breaker protected 240 Volt circuits
- (8) breaker protected 120 Volt circuits
- Generator start controls

## **JUNE 2023 YARD VISIT**

1. Two coats of bottom paint, SeaHawk Cukote
2. Prop Glide on running gear
3. Prove all seacocks operational
4. New cutlass bearing
5. Refit shaft seals
6. (3) new SeaBlaze white/blue underwater lights

## **COMMENTS**

**PRETTY LADY** represents a great example of a US specification 590 Ferretti originally sold by Ferretti of America.

She has 3 cabins, 3 heads and lots of outdoor spaces. Professionally maintained, she presents well and is seriously for sale by her owner of over 12 years.



Profile



Salon Looking Forward





Salon Looking to Port



Salon Looking to Stbd.





Salon Table Extended



Galley





Galley



Galley



Laundry





Salon Looking Out



Upper Dinette





Helm



Helm Outboard



Companionway





Companionway



Twin Cabin



Twin Cabin





Guest Head



Master Looking Outboard



Master Looking Inboard



Master Looking Forward





Vanity



Master Head



Master Shower



VIP Looking Fwd.





VIP Looking to Stbd.



VIP Head



View from Helm



Windlass Detail



Sunlounge Cushions





Side Decks



Aft Deck Curtains



Aft Deck





Aft Deck



Folding Table



Aft Seating



Folding Table





Flybridge Access



Sink and Cleats



Crew Cabin Entry



Flybridge Looking Fwd.





Flybridge Looking Aft



Flybridge Wet Bar



Helm



Helm Detail





Garmin



Helm Controls





Engine Room Access

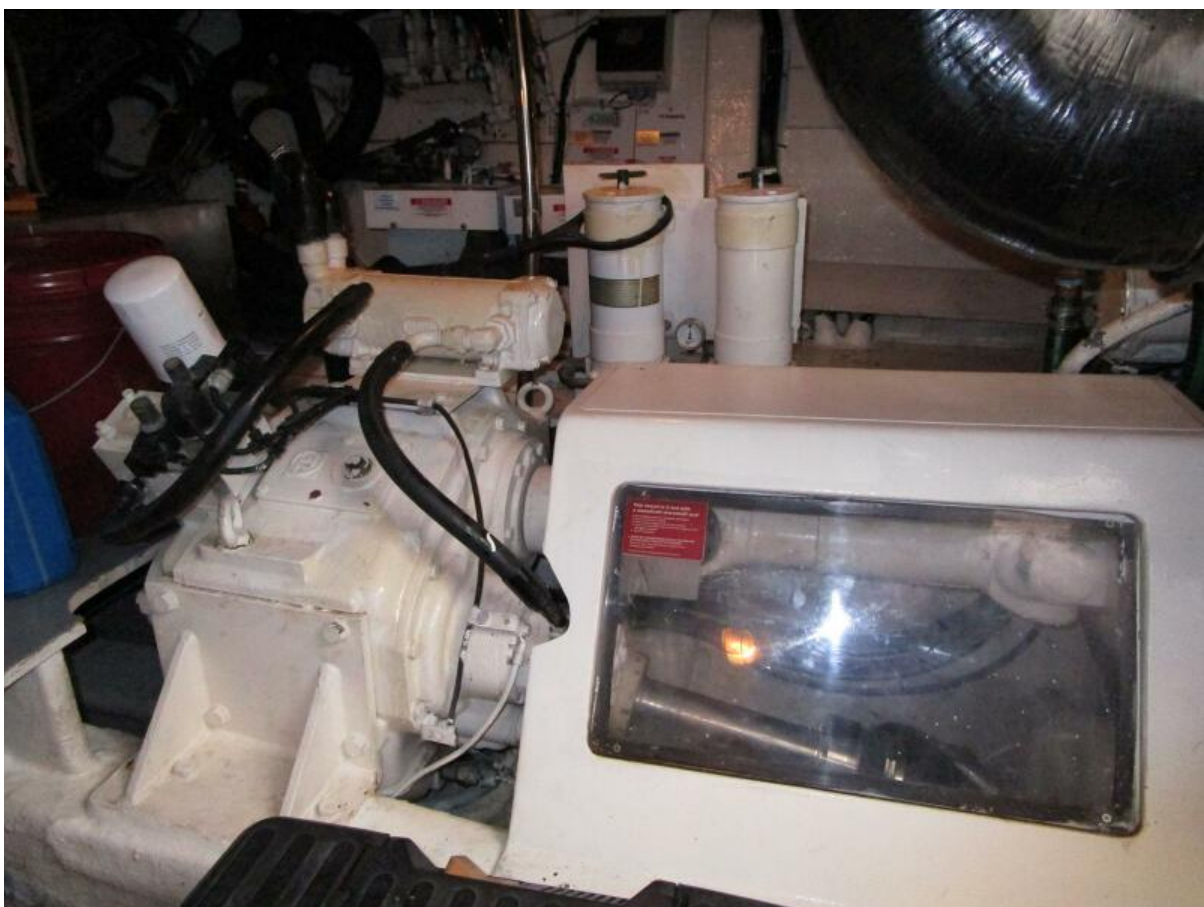


Port Engine





Stbd. Engine



Reverse Gear / V Drive



Engine Room Aft



Engine Room Forward





Swim Platform



Alt Profile



Bahamas





Cropped Bahamas





Bahamas