



# NORTH STAR

34' (10.06m) 1983 Vindo 45  
Salem Massachusetts United States



## OVERVIEW

**\$68,500**

Manufacturer:	Vindo	Hull Material:	Fiberglass
Engines:	1 Beta Marine	Cruise Speed:	Knots
Engine Model:	BD1005	Max Speed:	Knots
Engine HP:	28	Cabins/Heads:	3 / 1
Beam:	10' 10"	Fuel Type:	Diesel
Max Draft:	5' 2"	Fuel:	21 G (79.49 L)
Water:	60 G (227.12 L)		



## Data Sheet

Category: Cruisers	Knots	Displacement: 13000 Fuel Tank: 21 gal
Condition: Used	Knots	(79.49 liters)
Model Year: 1983	Fuel Type: Diesel	Fresh Water: 60 gal (227.12 liters)
Beam: 10'10" (3.30m)	Hull Material: Fiberglass	Holding Tank: 20 gal (75.71 liters)
Max Draft: 5' 2" (1.57m)		Imported: No
LOA: 33' 8" (10.26m)		HIN/IMO: VNA098300063
LWL: 26' 9" (8.15m)		
LOD: 33' 8" (10.26m)		
Cabins: 3		
Double Berths: 2		
Heads: 1		

## Engines/Generators

### Engine 1

Beta Marine  
BD1005  
28HP  
20.88KW  
Fuel: Diesel  
Hours: 450  
Year: 2001  
Location: Middle

## Summary/Description

Beautiful, Handcrafted Sailboat, Built in Sweden This boat has been well cared for and refurbished over the past 4 years, including a complete engine rebuild.

### Beautiful, Handcrafted Sailboat, Built in Sweden

This boat has been well cared for and refurbished over the past 4 years, including a complete engine rebuild.

The Vindo 45 is an exceptional example of Swedish craftsmanship. In his book, "The World's Best Sailboats", Ferenc Maté, stated "If you were to ask most sailors to tell you in one phrase how they'd like their fiberglass boats built, they would tell you without hesitation, "out of wood". Vindö Yachts of Sweden have done just that as far as is humanly possible. They have combined strength and longevity of fiberglass hulls and cockpits and a partial deck with the beauty of magnificently crafted varnished mahogany house and teak housetops and teak decks, to create some of the prettiest yachts in the world today."

### Recent Upgrades:

- Beta 28hp engine totally rebuilt (2019)
- New Simrad chartplotter & radar (2020, 21)
- New Doyle main and jib (2021)
- New Harken jib furler (2022)
- Varnishwork refurbished (2022)
- New stainless steel standing rigging (2023)

## Descriptions

### Accommodations

Accommodations for up to 7 in a handsome 2 stateroom layout with a full varnished mahogany interior with a varnished teak and holly sole. Headroom is 6'-2" to 6'-3" aft and throughout the Salon. Abundant natural light and ventilation with 4 large fixed ports, 7 opening ports, and three hatches (all opening ports and hatches have screens as does the companionway). Artificial lighting is equally well thought out with swivel style reading lamps at all berths and settees and overhead lamps in working areas. Starting forward is the private forward cabin with 6'-2" V-berth with filler. Below the berth there is some bin type storage and above the berth the hull is lined with varnished mahogany ceilings and then under deck lockers. Aft and to port are two large hanging lockers. Opposite the hanging lockers, to starboard is the enclosed head with large vanity with good storage, porcelain sink with pressure hot & cold water and manual fresh water. A telephone style faucet allows one to take a shower. Manual W.C. is plumbed via a Y-valve to the holding tank. Continuing aft is the Salon with 6'-8" U shaped settee to starboard which makes out to a double. There is storage under and behind and in lockers and shelves above. Dining is off a varnished mahogany drop leaf table. Opposite is a shorter settee of 5'-5" in length but the seat back flips up either for storage or to provide enough length that a child or not too tall adult might sleep diagonally on this berth, again above the berth there is storage in lockers and shelves. At the aft end of the port settee is the aft facing Nav. Station with flip top type chart table electronics and the yachts electrical distribution panels. Furthest aft and to port is the private aft cabin with 6'-6" double berth. Above the berth the hull is lined with varnished mahogany ceilings and then an under deck locker with sliding doors. Fwd in the cabin is a hanging locker. Aft and to Starboard is the U-Shaped Galley featuring double basin stainless steel sinks with pressure H&C water and manual fresh and salt water faucets, "ice box" fitted with an Adler Barber refrigeration system with small freezer

compartment and Optimus gimbaled propane 2 burner stove with oven. There is very good storage and counter-space. While original the interior upholstery is in excellent condition as are all finishes throughout. 4 Hela turbo fans Eclipse AM/FM/CD stereo with Bose speakers in cockpit and Salon Marine tech electronic propane solenoid & sniffer

## **Sails and Rigging**

Aluminum deck stepped single spreader mast and boom New 1X19 stainless steel wire rigging in 2023. New Doyle Mainsail and 135% roller furling genoa in 2021 Hood Spinnaker, hardly used (2) Lewmar #43ST 2 speed primary winches (3) Lewmar #7 single speed halyard winches (main, jib, spinnaker) New Harken roller furling in 2022 Manual backstay adjuster Harken traveller system

## **Electronics**

Equipped for coastal cruising. 3 Nexus combination displays Wind Angle & Speed, Depth, Speed/Log Icom VHF New Simrad Radar 2021 New Simrad chart plotter 2020 2008 Silva magnetic compass Hand Held searchlight The VHF and a Nexus wind, depth, speed/log display are located at the Nav. Station, the Radar and Plotter are on swing-out brackets at the companionway, and there are 2 Nexus displays in the cockpit at the helm.

## **Electrical**

Wired for both 110 Volt AC and 12 Volt DC service. 12 Volt DC: Switch panel with breakers 55 amp alternator 3 Group 24 lead acid batteries 1 Group 27 lead acid batteries Link 10 battery monitor 110 Volt AC Switch panel with breakers 30 amp shore power connection aft 50' 30 amp shore power cord Outlets 20 amp True Charge 20 battery charger 2008 Water heater (also engine supplied)

## **Mechanical**

The 28 hp Beta fresh water cooled engine was removed, and totally rebuilt in 2019, 350 hrs since rebuild. 15X9.5" 3 bladed bronze propeller 7/8" stainless steel shaft Racor fuel filter Fuel Gauge at nav. Station Electric bilge pump Manual bilge pump Manual waste tank pump (and deck pump out)

## **Hull and Deck**

Fiberglass hand laid hull with Divynicell coring to app 2' outboard of centerline. The bottom was stripped and barrier coated in the late nineties Comfortable cockpit with sail locker starboard side and additional lockers aft P&S as well as a lazarette. Wide side decks with stainless steel stanchions and double lifelines with gates P&S. There is a fold down stainless ladder on centerline aft. The brightwork was refurbished in 2022. 12 HT Danforth anchor with app 20' chain and 150' rode 6 Type II vests and PFDs Flare kit 3 ABC dry chem fire extinguishers Lifesling Horseshoe lifering Outboard motor bracket Canvas sail cover, dodger and cockpit awning Foredeck light Cockpit cushions 4 fenders & 4 docklines

## **Additional Equipment**

Achilles 7'8" inflatable tender (2019) 3.5 HP Mercury outboard (2019) 2 anchors: Danforth and Delta Plow fast-set  
Custom Fairclough custom winter cover (2022) Magama Barbecue grill (2021)

## **Features**

### **Electronics**

- Depthsounder
- Radar
- Log-Speedometer
- Wind Speed and Direction
- Repeater(s)
- Navigation Center
- Plotter
- Compass
- VHF

### **Sails**

- Battened Mainsail
- Spinnaker
- Genoa
- Furling Genoa

### **Rigging**

- Steering Wheel

### **Inside Equipment**

- Electric Bilge Pump
- Oven
- Manual Bilge Pump
- Marine Head
- Hot Water
- Refrigerator
- Battery Charger

### **Electrical Equipment**

- Shore Power Inlet
- Inverter

### **Outside Equipment/Extras**

- Teak Cockpit
- Teak Sidedecks
- Cockpit Cushions

## Covers

- Spray Hood
- Mainsail Cover
- Genoa Cover

## Mechanical Disclaimer

Engine and generator hours are as of the date of the original listing and are a representation of what the listing broker is told by the owner and/or actual reading of the engine hour meters. The broker cannot guarantee the true hours. It is the responsibility of the purchaser and/or his agent to verify engine hours, warranties implied or otherwise and major overhauls as well as all other representations noted on the listing brochure.





NORTH STAR at Mooring









Main Salon at Night



Main Salon Looking Forward



Starboard Settee looking Forward





Starboard Settee looking Aft



Port Settee looking Forward



Port Settee looking Aft



Nav Station





Galley Looking Aft



Head





Vee Berth



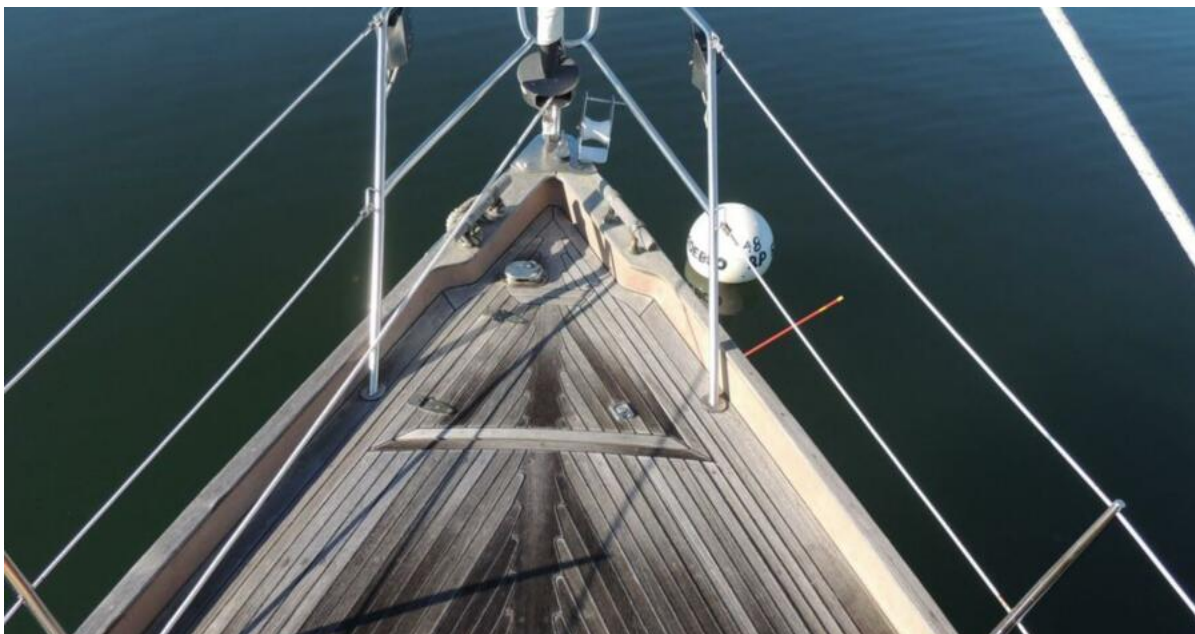
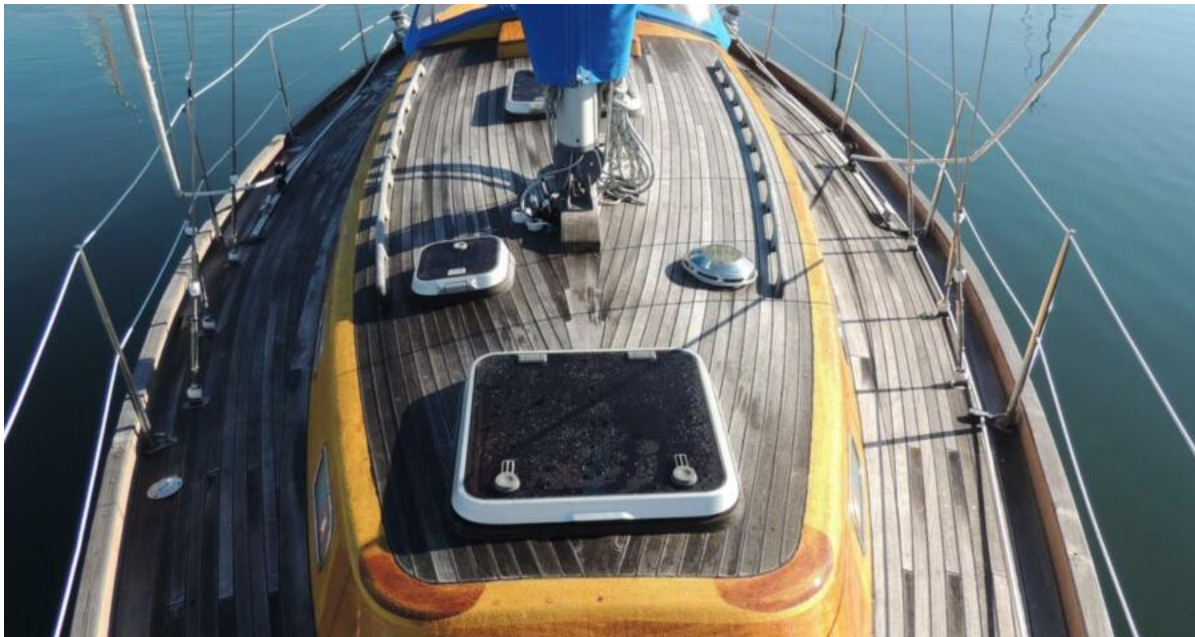
Quarter Berth



Full Keel









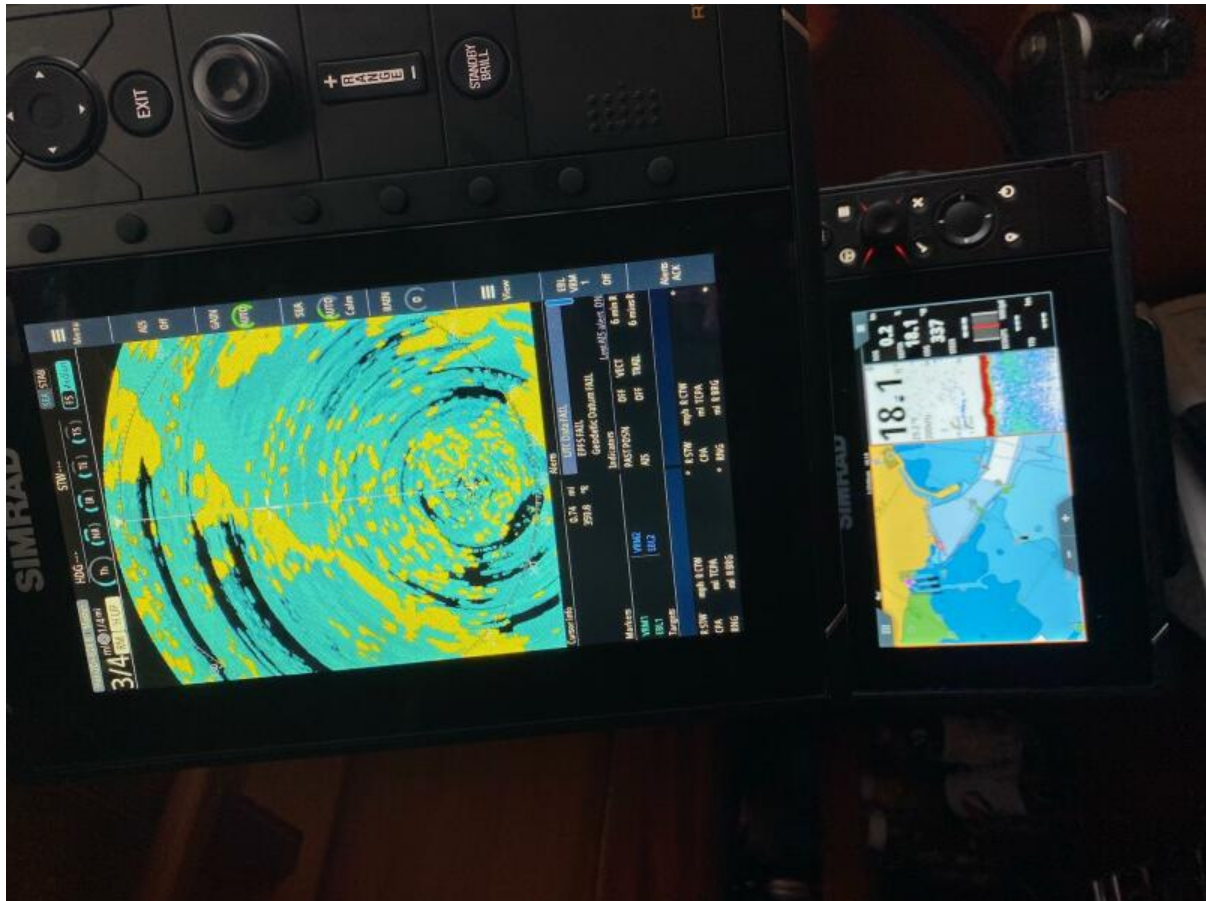












New Simrad Radar and Chart Plotter



Engine Totally Rebuilt

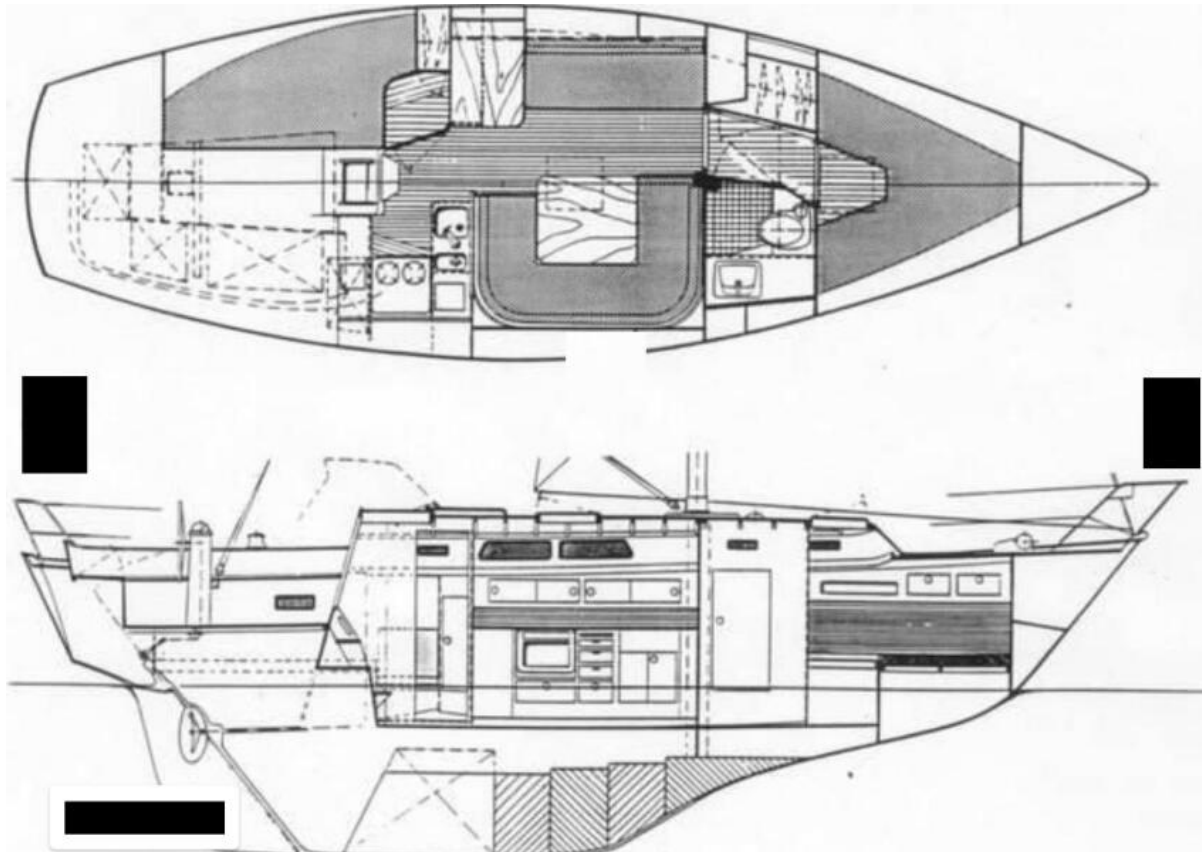


At the Dock





Under WAY



Arrangement Plan