



76' (23.16m) 2022 Sunseeker 76 Yacht
Aventura Florida United States



OVERVIEW

\$4,650,000

Manufacturer:	<i>Sunseeker</i>		
Engines:	2 MAN	Hull Material:	Fiberglass
Engine Model:	V12	Cruise Speed:	MPH
Engine HP:	1550	Max Speed:	32 MPH
Beam:	19' 6"	Cabins/Heads:	4 / 4
Max Draft:	5' 7"	Fuel Type:	Diesel
Water:	370 G (1400.6 L)	Fuel:	1585 G (5999.87 L)



Data Sheet

Category: Motor Yachts
Condition: Used
Model Year: 2022
Beam: 19'6" (5.94m)
Max Draft: 5' 7" (1.70m)
LOA: 77' 5" (23.60m)
Cabins: 4
Heads: 4

Maximum Speed: 32 MPH
MPH
Fuel Type: Diesel
Hull Material: Fiberglass

Dry Weight: 118140 lbs
Fuel Tank: 1585 gal (5999.87 liters)
Fresh Water: 370 gal (1400.6 liters)
Holding Tank: 115 gal (435.32 liters)
HIN/IMO: GBXSK07729I122

Engines/Generators

Engine 1

MAN
V12
Inboard
1550HP
1155.84KW
Fuel: Diesel
Hours: 695
Location: Port

Engine 2

MAN
V12
Inboard
1550HP
1155.84KW
Fuel: Diesel
Hours: 695
Location: Starboard

Summary/Description

Own one of Sunseeker's most successful models, barely broken in but millions less than her replacement value! For sale by the original owner, this yacht has a full complement of options, and meticulously serviced and cared for by a full time Captain and Crew. Notable Highlights Include: MAN 1550HP E

Own one of Sunseeker's most successful models, barely broken in but millions less than her replacement value! For sale by the original owner, this yacht has a full complement of options, and meticulously serviced and cared for by a full time Captain and Crew. Notable Highlights Include: MAN 1550HP Engines, Platinum USA Package, Platinum Navi Package, Performance AV Package, Silver Oak Finish and Hardwood Flooring, Black Painted Hardtop, Flybridge Jacuzzi, Sleipner Vector Zero Speed Stabilizer Fins, Teak Decking, Tropical AC, Two 29KW Gens, Bow & Stern Thrusters, Hydraulic Platform, Water-maker, Fitted Crew Cabin, Extra Fridge Drawers & Wine Cooler, Full Fly Wet Bar, Premium Miele Appliances, Telescopic Gangway, Underwater lights, and more

Additional Information

Manufacturer Provided Description

The stunning 76 Yacht gives you everything you want from a Sunseeker. From exceptional sea-keeping, the latest deep-V hull design to the class-leading space throughout the beautifully appointed decks. Not only does this model cut an impressive silhouette on the horizon, but an expanse of glass and sunlight also welcomes you onboard the 76 Yacht, and the main deck allows you to entertain with an almost 360-degree view of your surroundings. For 'al fresco' life, the exterior decks provide unprecedented levels of space and flexibility to suit owner needs. On the flybridge, choose a spa tub, jet-ski with crane or additional sunbeds to maximise this space. Complement the superyacht feel with any number of layouts. The cockpit can be adapted to include additional lounge seating or a cocktail bar. At the stern, enjoy the addition of a mini beach club, complete with a barbecue grill, fold-out seating and a rain shower, perfect for entertaining family and friends. Make the most of the extended bathing platform, which can accommodate a Williams 445 tender, SeaBobs, and more. The impressive layout of the 76 Yacht continues on the foredeck, where large twin sunbeds, fore/aft seating and optional refrigeration ensure space maximisation for any social occasion.

Options Installed

- **Main Console Navigation.** Simrad IS42 Speed/Depth Instruments with Airmar B744V depth/speed/temperature transducer and Simrad Sonarhub fishfinder Module. Simrad AP44 Autopilot system. Two 19" Simrad MO19T displays. Simrad NSO processor and Simrad OP50 Controller and SD card reader.
- Simrad Halo 4 Pulse Compression Radar 64nm 4 foot open array radar scanner. Simrad RS90 VHF Radio with DSC function with 2.4 metre whip antenna.
- Simrad AIS Module NAIS-400 with GPS and 2.4 metre AIS VHF antenna. Simrad connected to boat Wi-Fi to control the NSS from your iPad or iPhone. Flybridge Console Navigation.
- Simrad IS42 Speed/Depth Instrument. Simrad AP44 Autopilot system. Two Simrad NSS16 Evo3S colour 16" Multifunctional touch screen Chart Plotter displays. Simrad HS100 VHF Radio with DSC function.
- Third station engine control located in aft cockpit (with engine throttles, stop and start and thruster control)
- **Performance AV Package:** 1. Saloon Samsung 55" UHD television with built in Apple TV App. Blu-ray player. Surround system with a Proficient Protege LSB3 Passive Soundbar powered by a Sonos Amp and Sonos Subwoofer. B&W rear speakers and Sonos Amp. 2. Master stateroom Samsung 55" UHD television with built in Apple TV App. Blu-ray player with a Proficient Protege LSB3 Passive Soundbar powered by a Sonos Amp and Sonos Subwoofer. 3. Forward cabin Samsung 43" UHD television with built in Apple TV App. Blu-ray player and a Proficient Protege LSB3 Passive Soundbar powered by a Sonos Amp. 4. Starboard Guest cabin Samsung 32" HD

Television with built in Apple TV App. Blu-ray player and Sonos Amp with Fusion ceiling speakers. 5. Port Guest cabin 24" HD Television with a Blu-ray player and Sonos Port with Fusion ceiling speakers and two channel amp. Apple TV. 6. Crew cabin 24" HD Television

- with Fusion Apollo Radio with Bluetooth and Airplay functionality and Fusion ceiling stereo speakers. Sonos Port linked to the cabin AV system. 7. Aft Cockpit zone with Four Sonance
- VPXT6R Extreme Speakers with Sonos Amp. Fly-bridge zone with Four Sonance VPXT6R Extreme Speakers with Sonos Amp. Fore deck zone with Two Sonance VPXT6R Extreme Speakers with Sonos Amp. The exterior zoning audio is controlled via the Sonos App on a supplied iPad tablet. Note. The router is to provide access to the internet via Wi-fi or Cellular data and to allow the user to link to an available marina Wi-fi network. The boat can be fitted with up to 2 SIM cards (user supplied) to access the internet when in range of 3G-4G data signals. This system will give data communications only. Voice communication is not covered.
- 2kW Victron Inverter system to run the boats refrigeration goods including ice maker and
- optional wine cooler from the boats DC batteries. Two additional dedicated Trojan 100Ah AMG batteries are added.
- Underwater lights - Lumishore TIX202 LED x 8. Four on stern and two either side.
- Engine room access door from Crew cabin. Seaglaze Series 28 Ocean heavy duty watertight door.
- Water Maker HRO Seafari 110 lt per hour (SFC 700-1)
- Hydraulic Telescopic gangway 5 metres Stainless steel with teak treads
- Spa Tub installation on the Flybridge aft deck with raised sunbathing moulding
- Fresh water deck wash system with outlets on Bathing Platform, Flybridge and Fore deck
- Forward flybridge seating group sunbed conversion with a fold out in-fill board and cushion.
- The in-fill board is supported on a teak coffee table which is on a telescopic leg.
- Teak Side Decks to include the anchor deck and Seating group deck
- Teak fore deck table with fixed top fitted on a polished stainless steel leg
- Interior Wood Finish - Silver Oak Low build open grain Satin Finish
- Two single beds with electrically operated slider to form an occasional double in the Port Mid Cabin
- Cadorin Hard Wood Flooring to Saloon, dining and helm
- Cadorin Hard Wood Flooring to main stairs from saloon to lobby
- Cadorin Hard Wood Flooring to Lower Lobby
- **Platinum USA Package**
- Flybridge composite hardtop including electric retractable centre canopy and aft electric awning.
- Sleipner Zero Speed stabiliser vector fin system.
- Air Conditioning Tropical upgrade.
- Second 29kW Generator and a Glendinning Cablemaster.
- Hydraulic Sleipner Bow thruster 23.3hp and Hydraulic Sleipner Stern Thruster 20hp with Simultaneous dual Proportional controls.
- Oil change system for engines gearboxes and generators.
- Electrically operated side opening galley window.
- Marine Electric BBQ Grill on Fly wet bar.
- Dimmer switches on interior and exterior overhead lighting.
- Low level LED side deck lights 10 per side.
- Separate Miele washing machine and Miele tumble dryer.
- Drawer refrigerator fitted under the console.
- Drawer refrigerators x2 under the bow Sunbeds.
- Wine cooler for 20 bottles.
- Integrated Miele microwave oven upgrade.
- Flybridge Teak Decking.
- Additional pair of 12" Spring stern mooring cleats.
- Pair of Retractable Cleats for tender on the platform.
- Digital lock safe in master and forward stateroom.

- Custom BBQ Grill Wetbar on the aft flybridge
- Cockpit Wet Bar
- Black Hard Top

Construction

- Hand-laid GRP
- Gel coat including stripes
- Vinylester skin coat with powderbound mat
- Stitched multi-axial reinforced single-skin bottom
- Balsa-cored hull topsides
- Cored deck and superstructure
- Hull stiffened with longitudinal stringers supported by transverse bulkheads and floors

Accommodations

Saloon

- Flush stainless steel glazed sliding door to aft cockpit
- Air conditioning
- Television 55"
- Blu-ray/radio/CD/DVD cinema surround system
- iPod dock/radio for exterior system
- Coffee table
- LED overhead lighting 24v
- 2 x double AC sockets
- Scatter cushions
- Choice of interior finishes and veneers
- Fitted carpet

Dining

- Large dining area with formal dining table, outboard bench and 5 chairs
- Bar cabinet with 8 champagne flutes and 8 whisky glasses
- Access stairs to the lower decks
- LED overhead lighting 24v
- 2 x double AC sockets
- Fitted carpet

Aft Master Stateroom

- Panoramic windows with opening ports and blinds
- Double berth
- Under-berth drawers and storage
- Bedside cabinets
- Fixed settee
- Dressing table with mirror and stool
- LED overhead lights 24v
- 2 x reading lights 24v
- 2 x double AC socket
- Television 55"
- CD/DVD player

- Air conditioning
- Walk-in wardrobe
- Door to en suite toilet and shower
- Fitted carpet

Master En Suite Shower Room

- Electric toilet
- Two washbasins, taps and soap dispenser
- Toothbrush and glass holder
- Towel ring and towels
- Mirrored vanity unit
- Separate shower compartment
- Extractor fan
- LED overhead light 24v
- Opening porthole with mosquito screen and blind
- Razor socket 240/110v

VIP Forward Stateroom

- Double berth
- Drawers and storage beneath
- Wardrobe
- Dressing table with mirror and stool
- LED overhead lights 24v
- 2 x reading lights 24v
- 2 x panoramic windows with opening ports and blinds
- Deck hatch with screen
- Two double AC sockets
- Television 40"
- Radio/CD/DVD player
- Air conditioning
- Door to en suite toilet/shower
- Fitted carpet

VIP En Suite Shower Room

- Electric toilet
- Washbasin, taps and soap dispenser
- Toothbrush and glass holder
- Towel ring and towels
- Mirrored vanity unit
- Separate shower compartment
- Extractor fan
- LED overhead light 24v
- Opening porthole with mosquito screen and blind
- Razor socket 240/110v

Starboard Guest Cabin

- Double berth
- Drawers and storage beneath

- Bedside units
- 2 x reading lights 24v
- Wardrobe with mirrored door
- LED overhead lights 24v
- Opening porthole with mosquito screen and blinds
- Two double AC sockets
- Air conditioning
- Television 32"
- Radio/CD/DVD player

Main Helm Console

- Port-side observation area seating group
- Upholstered helm seats
- Console with walnut type fascia
- Leather rimmed chrome steering wheel
- Hydraulic power steering
- Radar/chart plotter with GPS
- Autopilot
- Electronic speed and depth sounder
- VHF radio with DSC
- Engine instrumentation
- Touch screen monitoring panel
- Rudder indicator
- Trim tab controls
- Compass
- Horn
- Switch panels
- Windscreen wipers with washers
- Demisters
- Cigar lighter
- Glass holders
- Double AC socket
- Hand-held fire extinguisher
- Side opening door to side deck

Deck

- Fittings all in stainless steel
- 8 stainless steel deck cleats
- Pulpit and cockpit rails
- Stainless steel fendering with rubber insert
- Stainless steel bow roller with anchor stop
- Stainless steel bow plate
- Delta anchor 50kg and 60m 12mm chain (galvanised)
- Electric bow winch and capstan with deck, cockpit and flybridge controls 24v
- Chain locker - fender stowage
- Curved safety glass windscreen
- 3 x Pantograph windscreen wipers 24VDC and washers
- Fuel fillers port and starboard
- Fresh water filler

- IMCO navigation lights
- Remote spotlight 24v
- Ensign staff and socket
- Fender tie bar under anchor locker lid
- Fore deck storage lockers
- Fore deck seating

Galley

- Electric refrigerator and freezer drawers
- 4 burner ceramic hob
- Extractor fan
- Microwave oven
- Stainless steel sink
- Hot and cold water
- Rubbish bin
- 8 place crockery and cutlery set
- 2 x double AC sockets
- Hand-held fire extinguisher
- Dishwasher
- First aid kit

Aft Cockpit

- Teak-laid cockpit floor
- Self-draining
- Moulded staircase to flybridge
- Side bar unit with ice maker and cool box
- Stern seating
- Stern safety gates
- Engine room access hatch
- 2 x stern capstan winches 24v and fairleads
- Rope lockers
- Cockpit speakers
- Overhead cockpit lights 24v
- Low-level courtesy lights aft cockpit 24v

Engines

- Twin MAN 1550HP V12 engines
- Soundproofing throughout engine room
- 2 x aluminium cross balanced fuel tanks with electric sending unit
- Separate fuel filters/water separators
- Automatic fire extinguishers
- Engine room and forward bilge flood alarms
- Automatic bilge pumps
- Automatic flood pumps
- 4 x extractor fans 24v
- Manual bilge pump

Electrical

- Slow speed generator with underwater silent exhaust and sound box
- 2nd Generator (Optional)
- Shore power dockside connection
- Galvanic isolator
- 24v and 12v electrical system with full circuit breaker protection
- 8 x engine batteries 24v circuit
- 8 x domestic batteries 24v circuit
- 4 x generator batteries 12v circuit
- Alternator split charging system
- Remote battery switches controlled from locker in cockpit
- Battery charger for 24v circuits
- Battery charger for 12v circuits
- AC Water heater
- AC sockets throughout the boat
- 24v hand light and cable

Disclaimer

The company offers the details of this vessel in good faith but cannot guarantee or warrant the accuracy of this information nor warrant the condition of the vessel. A buyer should instruct his agents, or his surveyors, to investigate such details as the buyer desires validated. This vessel is offered subject to prior sale, price change or withdrawal without notice.



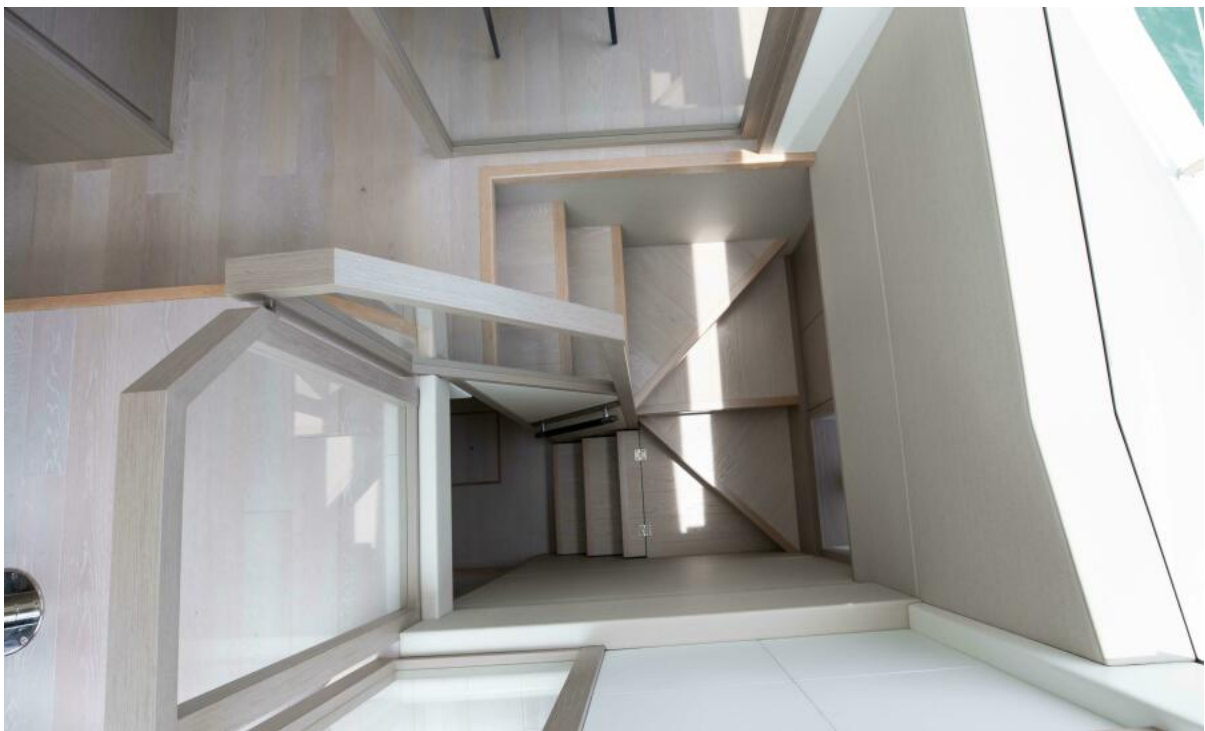


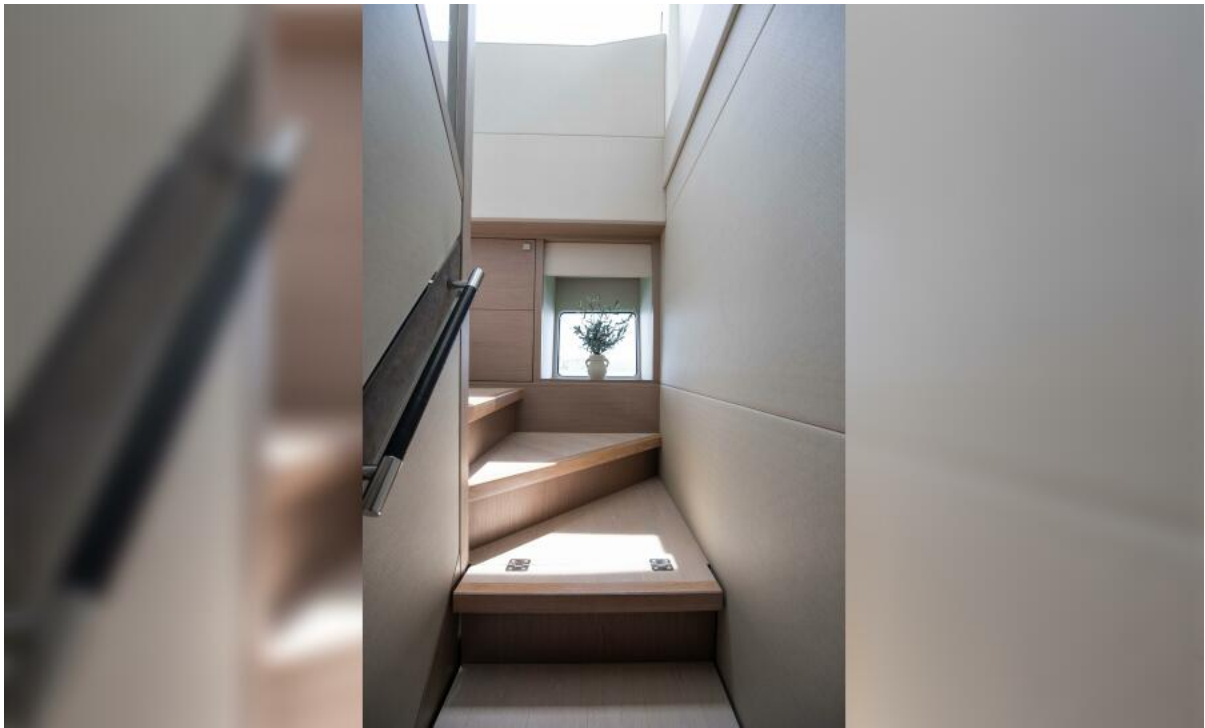




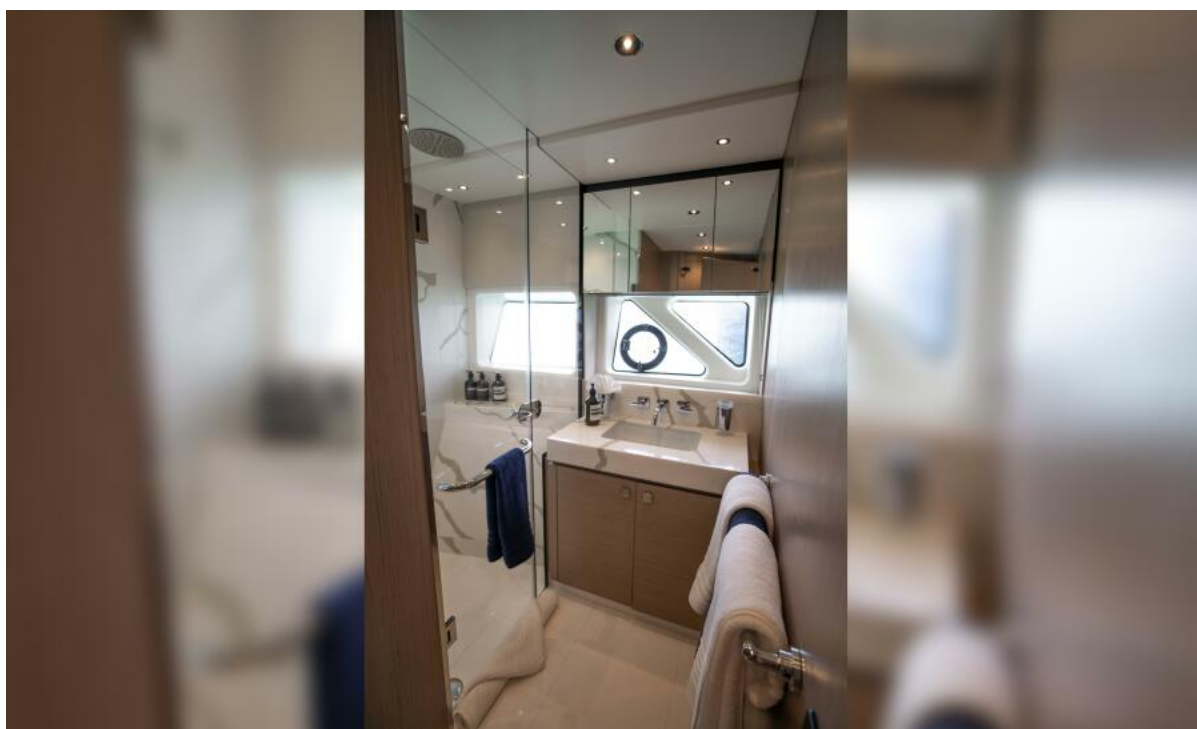




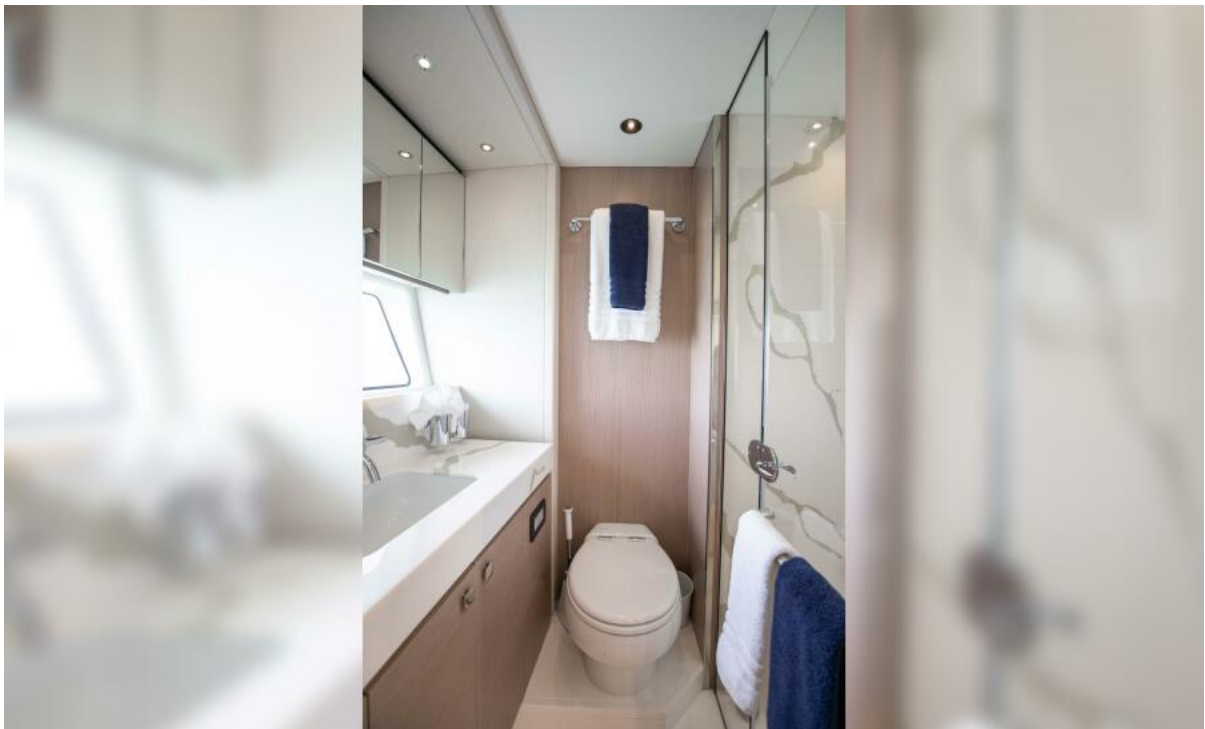


















Shown with optional hardtop



EXTERIOR PLAN
Shown with optional
coachroof skylight, flybridge
teak decking, wetbar with
raised shelf and 2 x bar stools

GENERAL ARRANGEMENTS



MAIN DECK
Shown with optional foredeck
teak decking and table, aft cockpit
corner seat package with footstool
and coffee table



LOWER DECK
Shown with optional sliding
inboard berth in port guest
cabin. Optional engine room
access door and optional
Pullman bunk in aft cabin





















