



Sea Stories

40' (12.19m) 2004 Meridian 408
Stuart Florida United States



OVERVIEW

\$235,000

| | | | |
|---------------|-----------------|----------------|-------------------|
| Manufacturer: | <i>Meridian</i> | | |
| Engines: | 2 Cummins | Hull Material: | Fiberglass |
| Engine Model: | 6BTA5.9M3 | Cruise Speed: | 18 Knots |
| Engine HP: | 370 | Max Speed: | 24 Knots |
| Beam: | 14' 4" | Cabins/Heads: | 2 / 2 |
| Max Draft: | 3' 10" | Fuel Type: | Diesel |
| Water: | 90 G (340.69 L) | Fuel: | 330 G (1249.19 L) |



Data Sheet

Category: Motor Yachts

Subcategory: Aft Cabin

Condition: Used

Model Year: 2004

Beam: 14'4" Max Draft: 3' 10" LOA: 40'
(12.19m)

Cabins: 2

Heads: 2

Maximum Speed: 24 Knots

Cruise Speed: 18 Knots

Fuel Type: Diesel

Hull Material: Fiberglass

Hull Shape: Modified Vee

Hull Finish: Gelcoat

Air Conditioning: Yes

Bridge Clearance: 18'

Dry Weight: 29000 lbs

Bow Thruster: Yes

Stern Thruster: Yes

Fuel Tank: 330 gal (1249.19 liters)

Fresh Water: 90 gal (340.69 liters)

Holding Tank: 55 gal (208.2 liters)

Imported: No

HIN/IMO: MDNC2053B404

Engines/Generators

Engine 1

Cummins

6BTA5.9M3

Inboard

370HP

275.91KW

Fuel: Diesel

Hours: 3800

Location: Port

Engine 2

Cummins

6BTA5.9M3

Inboard

370HP

275.91KW

Fuel: Diesel

Hours: 3800

Location: Starboard

Generator 1

Onan

11.50KW

Hours: 1738

Summary/Description

Sea Stories is a 2004 Meridian 408 Aft Cabin Motor Yacht that has been well maintained. The 2 staterooms, 2 full heads layout & full beam salon & galley make this a very comfortable liveaboard. This boat is a Great Loop veteran & is ready for the next owner to continue on this or another adventure.

Sea Stories is a 2004 Meridian 408 Aft Cabin Motor Yacht that is in nice condition and has been well maintained. From the mechanical aspect, this yacht features twin Cummins 6BTA5.9M3 370hp main engines, ZF 80A-2.0 transmissions, an Onan 11.5 KW generator, SidePower bow and stern thrusters, 4 reverse cycle heat and air conditioner units, Reverso oil change system and a Highfield CL 310 RIB tender with Tohatsu 15 HP outboard motor. Sea Stories also features a Raymarine electronics suite, indoor\outdoor carpeting on the sundeck and a washer\dryer combo unit. There are molded-in steps from the swim platform up to the sundeck, a full enclosure on the flybridge and sundeck with a hardtop over the sundeck, a 2 staterooms, 2 full heads layout and full beam salon & galley make this a very comfortable liveaboard. This boat is a Great Loop veteran and is ready for the next owner to continue on this or another adventure.

Recent upgrades and maintenance include:

- Compound, wax and polish exterior - 2023
- New heat exchanger starboard engine - 2021
- New turbo port engine, serviced starboard turbo and both after coolers - 2021
- New port head, gasket, injectors - 2022
- Trick Davit system installed - 2022
- New Highfield CL 310 tender -2022
- New Tohatsu 15 hp outboard - 2022
- Alternators rebuilt - 2022
- New house batteries - 2022
- New battery charger - 2022
- New bottom paint - 2022
- New canvas, bimini top and Stratoglass - 2022
- New steering cylinder - 2022
- Both heads rebuilt - 2023

Meridian 408 Walk Through

As you step aboard this yacht from the swim platform you ascend the molded staircase and enter the spacious, enclosed sundeck which is perfect for entertaining, dining or relaxation. From the sundeck, you can access the bow through the port and starboard side deck walkways, the salon through the companionway, or ascend to the flybridge. The flybridge is roomy and features a helm station with complete instrumentation and electronics. Additionally, there is a large L-shaped seating area with a refrigerator for entertaining guests. Retreating to the sundeck, you can enter the full-beam, well-lit salon through the sliding companionway door. On the port side, a comfortable sofa with three built in recliners provides plenty of space to relax. To starboard, a built-in entertainment center with a TV and a large L-shaped sofa with a hi-lo coffee/dining table. Moving forward and down a few steps, you will find the fully equipped galley, boasting a refrigerator/freezer, three-burner stove and oven, convection/microwave oven, stainless steel sink, and ample counter and storage space. Further forward from the galley, you can enter the guest stateroom, which features a centered queen berth, a hanging locker, and plenty of storage space. There is also a private entrance to the guest head, with a separate shower stall. Heading back to the salon and down to port, you can enter the full-beam master stateroom, with its queen-sized island berth, two hanging lockers, and abundant storage space. The ensuite master head features a separate shower stall and toilet. The engine room access is located in the sole of the salon, ensuring easy maintenance access.

Meridian 408 Accommodations

Sea Stories boasts a spacious full-beam master stateroom located aft, featuring a comfortable queen-sized berth and an ensuite head with an enclosed shower. Forward, the guest stateroom also offers a queen-sized berth, with convenient direct access to the guest head, complete with a separate shower.

Meridian 408 Main Cabin

The salon welcomes you with a plush carpeted sole, surrounded by a double row of windows on both port and starboard sides, equipped with blinds for privacy. On the port side, a large sofa with three built in recliners is accompanied by two storage ottomans. On the starboard side, an L-shaped sofa with a hi-lo coffee/dining table creates a perfect space for dining or entertaining. The entertainment center and electrical panel are located on the starboard aft wall, while engine room access is located in the sole.

The galley, located forward to port in the main cabin and is fully equipped with an Princess 3-burner electric cook top, Princess Gourmet electric oven, a Frigidaire microwave, a Norcold AC/DC refrigerator/freezer and a stainless steel sink. The Corian style counter tops provide ample workspace, while the vinyl wood plank sole adds a touch of elegance. Additional features include a Keurig coffee maker, toaster, storage cabinets, and in-floor storage space.

Meridian 408 Master Stateroom & Ensuite Head

The full-beam master stateroom is aft and offers a queen size berth, carpeted sole, nightstands, portlights, large hatch/window aft, hanging locker, storage cabinets and drawers and an ensuite head with separate shower and toilet compartments.

The master stateroom ensuite head features:

- Vacuflush toilet
- Porcelain sink basin mounted below a Corian style counter top
- Mirrored medicine cabinets
- Separate shower compartment with molded seat
- Separate toilet compartment
- Portlights in each compartment

Meridian 408 Guest Stateroom with Ensuite Head

The guest stateroom is forward and offers a centered queen size berth, 2 port lights, overhead hatch, hanging locker, storage cabinets, carpeted sole and direct access to the guest head starboard aft.

The guest head features:

- Vacuflush toilet
- Stainless Steel sink basin mounted below a Corian style counter top
- Mirrored medicine cabinet
- Shower stall with molded seat
- Single portlight

Meridian 408 Flybridge

The flybridge offers a bimini with full Strataglass enclosure, non-skid deck, Radar arch, L-shaped bench seat to starboard, captains chair centered on the helm, a navigators single seat to port, mini refrigerator/freezer aft of the navigators seat, storage cabinet port aft and molded steps down to the sundeck.

The helm features:

- Raymarine Multi-function display
- Raymarine RL80C Multi-function display
- Raymarine radar
- Raymarine ST40 Depth display
- Raytheon Ray53 VHF radio with DSC
- Danforth compass
- SidePower bow and stern thruster control
- SeaFire engine shutdown system
- Throttle and Transmission controls
- Trim tab and windlass controls
- Jabsco Search Light controls
- JBL Marine MR-32.3 Stereo with speakers

Meridian 408 Sundeck

The sundeck offers a hardtop with Strataglass enclosure, two wicker chairs with cushions, small folding table, wing door to each side deck, storage cabinet, carpet over non-skid deck and molded-in steps to the flybridge, cockpit and main cabin. A wet bar starboard forward on the sundeck features a sink, ice maker and storage cabinets.

Meridian 408 Engine and Mechanical Equipment

This yacht features the following mechanical equipment:

- Twin Cummins 6BTA5.9M3 370hp main engines (approx. 3,800 hours)
- ZF 80A-2.0 Transmissions
- Dripless shaft seals
- hydraulic steering system
- Racor fuel filters for each main engine with vacuum gauges
- Racor fuel filter for the generator
- Reverse cycle air conditioning/heating system (4 zones)
- Central vacuum system
- Attwood 10.5 gallon water heater
- Splendid Comb-O-Matic 5200 washer\dryer

Meridian 408 Electrical System

This yacht features the following electrical equipment:

- Onan 11.5 KW generator (271 hours)
- Xantrex Freedom 3000 W inverter
- Xantrex True Charge 2 40 amp battery charger
- 2 - Group 27 inverter batteries
- 2 - 6 VDC house batteries
- 2 - Group 31 main engine start batteries
- 2 - Group 31 thruster batteries
- Group 24 generator start battery
- Spare Group 31 battery
- Cablemaster shore power cord reel
- 75' 50 amp shore power cord

- Battery management and electrical panels

Meridian 408 Audio and Video Equipment

This yacht features the following audio/video equipment:

- LG 32" flat screen TV in the salon
- Toshiba TV in Guest Stateroom
- LG DVD\CD player in salon
- JBL MR-16 stereo with CD changer and speakers in the salon
- JBL Marine MR-32.3 Stereo with speakers
- JBL remote control pad on the sundeck

Meridian 408 Deck Equipment

This yacht features the following deck equipment:

- Lewmar anchor windlass with foot controls and controls at the helm
- 2 - Delta anchors
- Chain and rope anchor rode
- Stainless steel rails
- Stainless steel deck hardware
- Bow & stern wash downs
- Windscreen covers
- Boarding gate each side
- Dock water connection
- Swim platform hot and cold shower
- Fiberglass swim platform
- Stainless steel swim ladder

Meridian 408 Tender

This yacht features the following tender equipment:

- Highfield CL 310 RIB inflatable tender
- Tohatsu 15 HP outboard
- Trick davit system

Meridian 408 Safety and Fire Protection

This yacht features the following safety equipment:

- SeaFire FE241 engine room fire suppression system with remote on the flybridge
- SeaFire emergency engine shutdown system
- Handheld fire extinguishers
- Carbon monoxide detectors
- Dual horns
- Jabsco Searchlight
- Bilge pumps
- PFDs

Meridian 408 Exclusions

- Sellers' personal belongings
- Artwork
- Personal tools

Meridian 408 Disclaimer

The Company offers the details of this vessel in good faith but cannot guarantee or warrant the accuracy of this information nor warrant the condition of the vessel. A buyer should instruct his agents, or his surveyors, to investigate such details as the buyer desires validated. This vessel is offered subject to prior sale, price change, or withdrawal without notice.



Sea Stories



Port Stern Profile



Stern Profile



Starboard Stern Profile



Sundeck Forward



Sundeck Port



Sundeck Starboard



Sundeck Aft



Salon Forward



Salon Port



Salon Starboard



Salon Aft



Galley



Galley Forward



Galley Port



Galley Aft



VIP Stateroom Forward



VIP Stateroom Port



VIP Stateroom Starboard



Guest Head Vanity and Shower



Guest Head Shower and Toilet



Master Stateroom



Master Stateroom Forward



Master Stateroom Port



Master Stateroom Starboard



Master Stateroom Aft



Master Head



Master Head Shower



Master Head Toilet



Master Head Vanity



Flybridge Forward



Flybridge Helm



Flybridge Helm



Flybridge Port



Flybridge Starboard



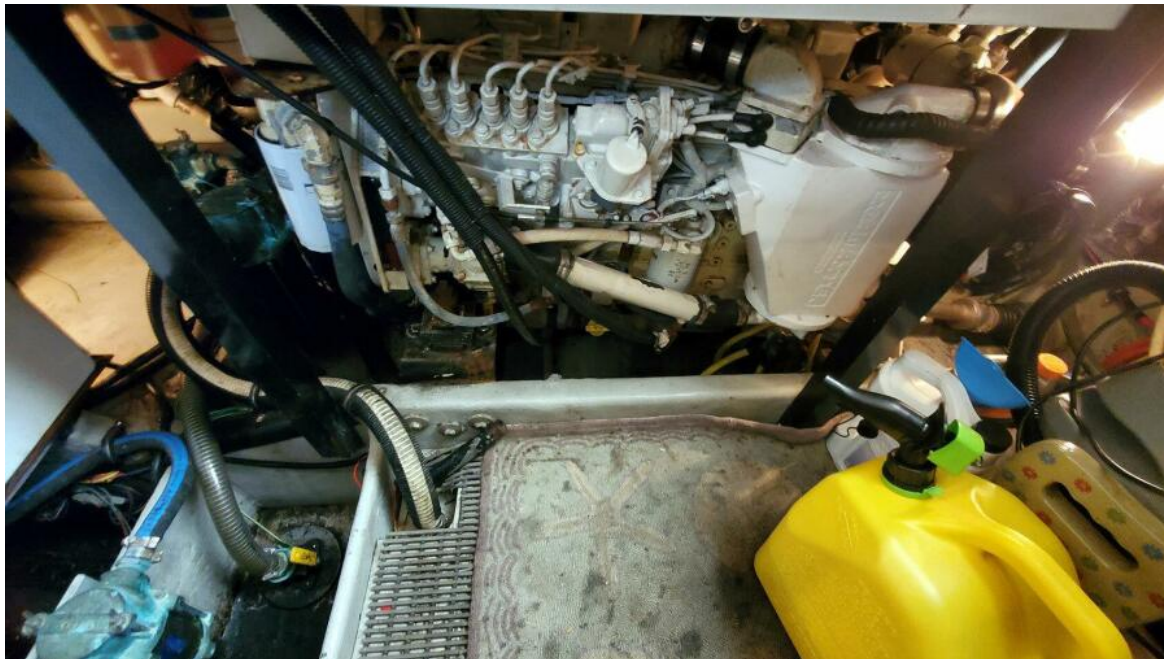
Flybridge Aft



Port Main Engine



Port Main Engine



Starboard Main Engine



Starboard Main Engine



ZF Transmissions



Dripless Shaft Seals



Fuel Filtration



Fire Suppression



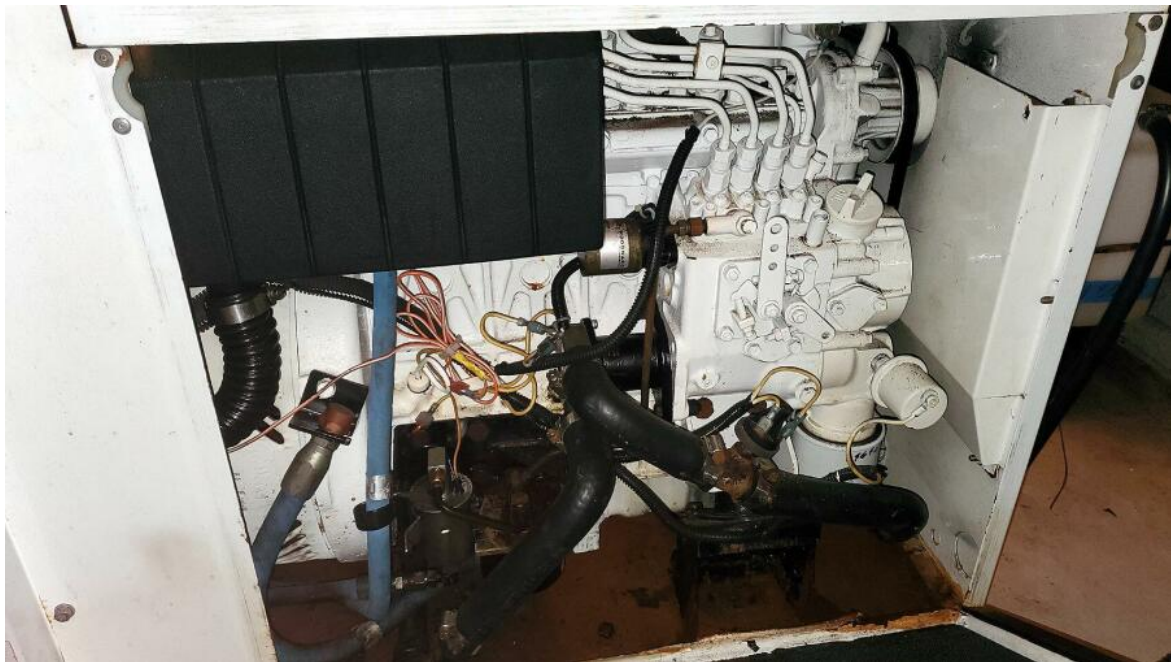
Water Heater



Laundry



Generator



Generator



Battery Charger Inverter



Battery Bank



Battery Bank



Battery Bank



AC Electrical Panel



DC Electrical Panel



Battery Management



Tender



Tender Bow



Tender Above



Outboard



Swim Platform



Port Side Walkway



Starboard Side Walkway



Fore Deck Forward



Fore Deck Aft



Sun Pads



Bow Pulpit



Anchor