



# Bogie Dick

38' (11.58m) 1983 Morgan 384  
Mandeville Louisiana United States



## OVERVIEW

**\$33,000**

Manufacturer:	Morgan	Hull Material:	Fiberglass
Engines:	1 Perkins	Cruise Speed:	
Engine Model:	4-108	Max Speed:	
Engine HP:	35	Cabins/Heads:	1 / 1
Beam:	12' 0"	Fuel Type:	Diesel
Max Draft:	5' 0"	Fuel:	40 G (151.42 L)
Water:	95 G (359.61 L)		



## Data Sheet

Category: Cruisers  
Subcategory: Sloop  
Condition: Used  
Model Year: 1983  
Beam: 12' Max Draft: 5' LOA: 38' 4"  
(11.68m)  
LWL: 30' 6" Cabins: 1  
Sleeps: 5  
Single Berths: 3  
V Berths: 1  
Head Room: 6' 2"  
Heads: 1

Fuel Type: Diesel  
Hull Material: Fiberglass  
Air Conditioning: Yes  
Bridge Clearance: 56' 6"

Displacement: 18000 lbs  
Dry Weight: 18000 lbs  
Fuel Tank: 40 gal (151.42 liters)  
Fresh Water: 95 gal (359.61 liters)  
Builder: Morgan  
Designer: Ted Brewer  
HIN/IMO: MYR38035M83K

## Engines/Generators

### Engine 1

Perkins  
4-108  
Inboard  
35HP  
Fuel: Diesel  
Hours: 415  
Hours Date: 09-21-2023

## Summary/Description

1983 Morgan 384 is located in New Orleans, LA

### **1983 Morgan 384 Features:**

- Hull & deck gel coated in 2012
- Full Electronic Inventory replaced 2016
- Salon Cushions replaced in 2022
- Air Conditioning
- Refrigeration
- Roller Furling Genoa
- Bimini
- Scroll down past the pictures, brochure & reviews to view the equipment list

For those readers who have been around as long as I have, your first vision at the mention of Morgan 38 is likely the classically styled, late '60s, Charley Morgan-designed sloops and yawls that were Morgan's follow-up the successful Morgan 34. For more recent devotees, Morgan 38 brings to mind a more contemporary series of 38 footers introduced by Morgan Yachts in 1977. In 1993 still another Morgan 38 was introduced. All models are commonly referred to as Morgan 38's but that's where the commonality ends. Only about 80 of the early Morgan-designed 38s were built, while nearly 500 of the 1977 Ted Brewer-designed series were built. The 93 model was a rather bulbous center cockpit model that has nothing in common with other models except its name. Space is limited and there are generally many more of the Brewer-designed models on the market, I am going to concentrate my look this month on this series. Very few models of boats have been built for protracted periods without some changes to their form or layout and the Morgan 38 is no exception. Introduced in 1977 as the Morgan 382, minor rig changes resulted in a model name change to Morgan 383 in 1980. In 1983 there were several more changes and again the model name changed to the Morgan 384. Although Morgan Yacht was purchased by Catalina in 1985, the Morgan 384 continued in production until 1986. The 1983 Morgan 384 is located in New Orleans, LA.

## Equipment List

### ACCOMMODATIONS

- Layout: Standard 1983 Morgan 384 Layout, see drawing
- Air Conditioning: Mermaid 16,500 btu reverse cycle, digital thermostat
- Ports: (5) Stainless Steel Opening, (2) aluminum opening ports
- Hatches: (2) Opening
- Cabin Sole: Teak, installed in 2012, original teak & original holly in the fwd cabin
- Nav Station: To starboard
- Dinette Table: To Port, fixed with (2) leaves
- Settee(s): To Stb
- Cushions: Salon cushions replaced in 2022, Blue Sunbrella
- 12v Fans: (4)

- Master Cabin: Fwd with V berth, private entrance to the head
- Guest Cabin(s): Aft with a Quarter berth
- Headroom: 6'2"
- Head(s): Manual head with separate shower

## **GALLEY**

- Stove: Propane stove top
- Refrigeration: 12v, Adler Barbour
- Microwave Oven: West Bend
- Sink: Double stainless steel
- Water: Hot & cold and manual with foot pump
- Water Heater: Yes

## **ELECTRONICS**

*Raymarine electronics installed in 2016*

- Plotter: Raymarine Hybrid at the nav station
- Autopilot: Raymarine wheel pilot
- Radar: Raymarine on stern mount
- Depth: Raymarine ST60
- Wind: (2) Raymarine ST60 in cockpit & nav
- VHF: Standard Horizon Matrix
- Stereo: Yes
- Temperature & Barometer: Yes
- TV: HP w2207
- Level Gauge: Yes

## **ELECTRICAL**

- 12v system: Yes
- 110v system: Yes
- Battery Charger:
- Batteries: (4) 6v Trojan T105 Replaced in 8/2021

- Battery Monitor: Victron BMV-712 Smart Battery Monitor, Bluetooth
- Shore Power: 30 amp service
- Interior Lights: Yes
- Nav Lights: Yes
- 12v Outlet(s): Yes

## **SAILS & RIGGING**

- Main: Dacron with 3 reef replaced in 2006
- Genoa: 130% Dacron replaced in 2006
- Genoa: 150% Dacron replaced in 2004, with some patches
- Mast: Deck stepped, with mast steps
- Roller Furling: Sea Furl
- Primary Winches: (2) Lewmar 46 self tailing
- Cabin Top Winch: Lewmar 8 single speed
- Mast Winches: (2) Lewmar 8 single speed
- Backstay: Yes
- Traveler: Yes
- Mast Steps: Installed in 2018
- Mast Height: 54'6"

## **DECK & HULL**

- Hull Color: White, gel coated in 2012
- Deck Color: Two tone gray & white, gel coated in 2012
- Draft: Standard draft, 5.0'
- Canvas: Bimini replaced in 2012
- Cushions: Cockpit
- Covers: Winches, mainsail, jib uv & hatches in fair condition
- Cockpit Table: Fold down teak
- Swim Ladder: Yes
- Anchor: Spade 100, Rocna, CQR & Plow
- Locker(s): Yes
- Type IV Flotation: Lifesling and Horseshoe
- Cowl/Dorade Vents: (4) stainless steel
- Teak: Natural/bare
- Bottom: The bottom was painted in 2022

## MECHANICAL

- Engine: Perkins 4108, 400 hours since MOH, the MOH was reported by the previous owner and there is no paperwork
- Air Conditioning: Mermaid M-16CHP 16,000 reverse cycle, with digital thermostat
- Prop: 3 blade fixed
- Steering: Wheel
- Stuffing box/gland: PYI dripless
- Water Heater: Yes
- Bilge Pump(s): 12v
- Filter(s): Filter Boss Commander Dual Racor fuel separators
- Oil & Filter: Last changed 11/2021
- Transmission Fluid: Last changed 11/2020
- Impeller: Last changed 3/2022
- Water: 55 gallons under stb settee & 40 gallons under v berth
- Head: Manual
- Holding Tank: Yes and with level gauge
- Dehumidifier: Unit shown in the salon is not included in the inventory

## Disclaimer

The company offers the details of this vessel in good faith but cannot guarantee or warrant the accuracy of this information nor warrant the condition of the vessel. A buyer should instruct his agents, or his surveyors, to investigate such details as the buyer desires validated. This vessel is offered subject to prior sale, price change or withdrawal without notice.





1983 Morgan 384



1983 Morgan 384





1983 Morgan 384



1983 Morgan 384





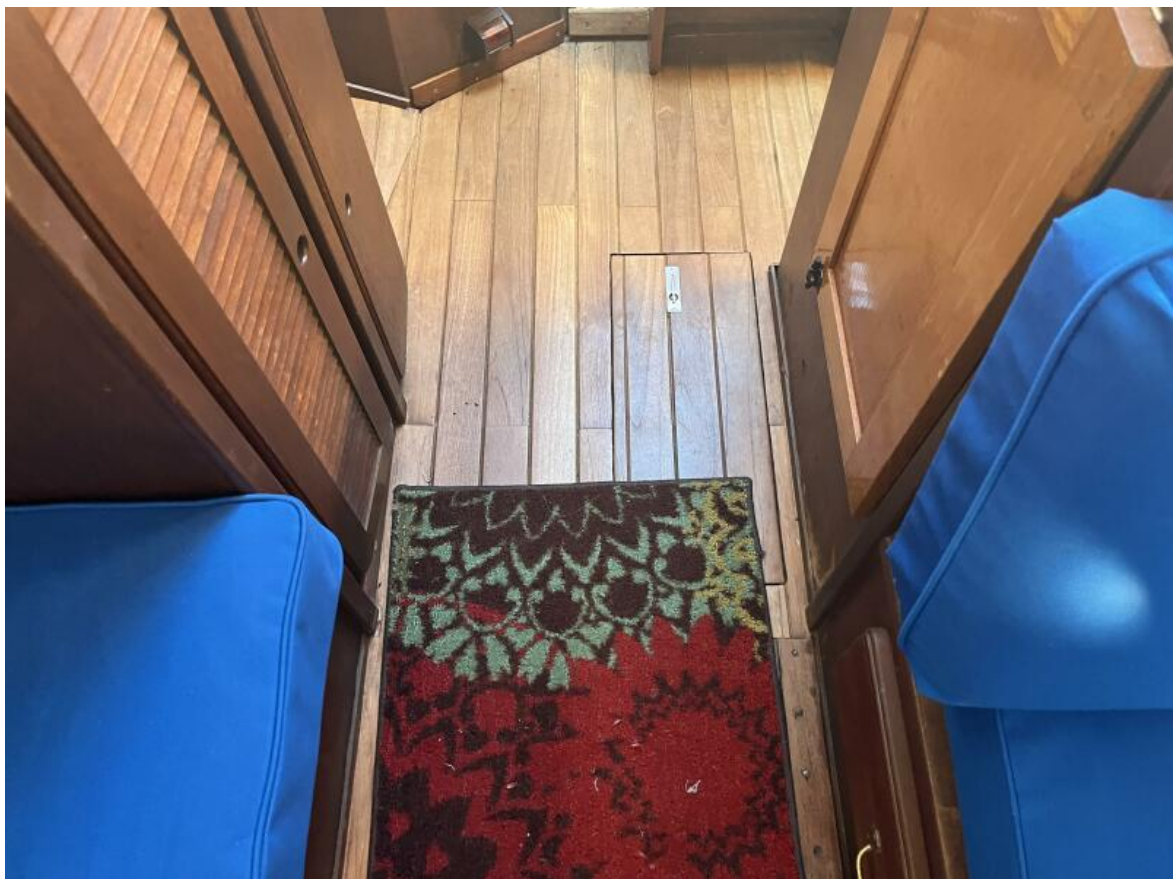
1983 Morgan 384



1983 Morgan 384



1983 Morgan 384



1983 Morgan 384





1983 Morgan 384



1983 Morgan 384





1983 Morgan 384



1983 Morgan 384





1983 Morgan 384



1983 Morgan 384





1983 Morgan 384



1983 Morgan 384

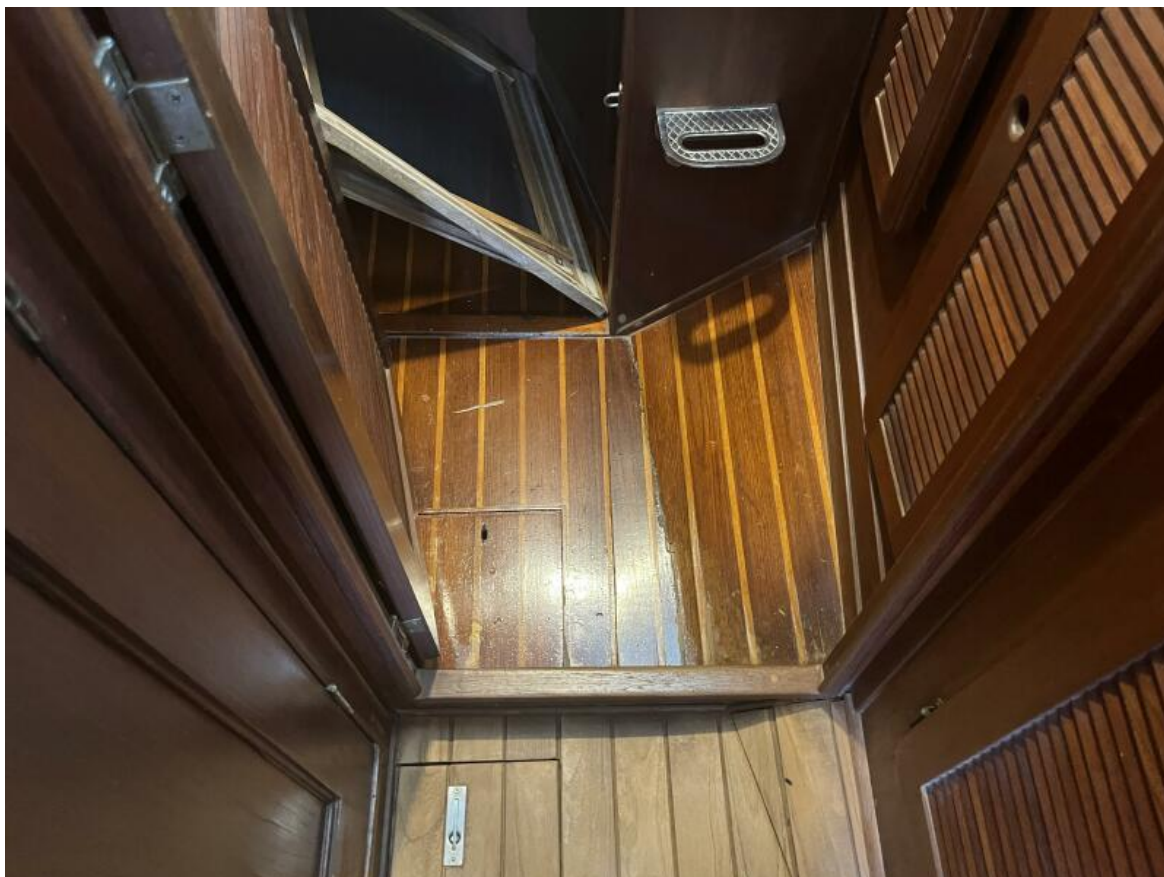




1983 Morgan 384



1983 Morgan 384



1983 Morgan 384



1983 Morgan 384





1983 Morgan 384



1983 Morgan 384





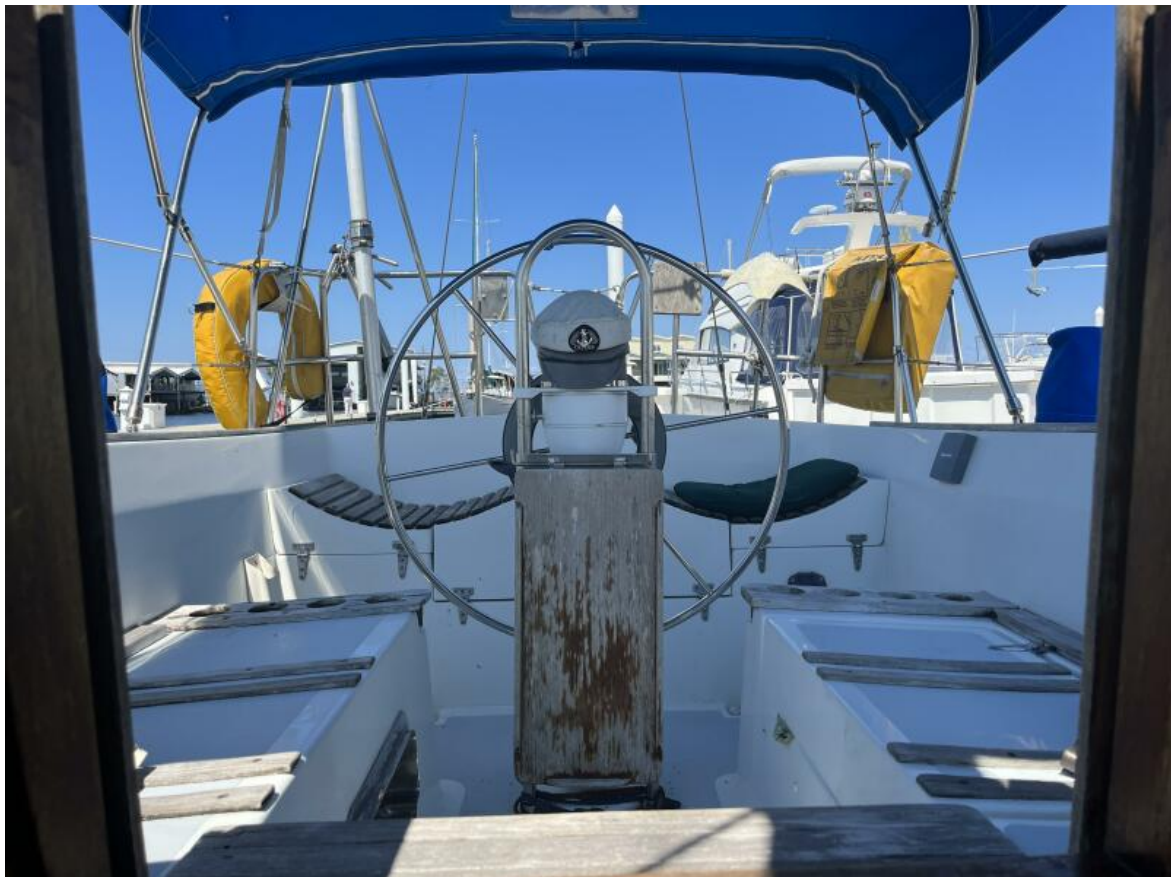
1983 Morgan 384



1983 Morgan 384



1983 Morgan 384



1983 Morgan 384





1983 Morgan 384



1983 Morgan 384





1983 Morgan 384



1983 Morgan 384





1983 Morgan 384



1983 Morgan 384





1983 Morgan 384



1983 Morgan 384





1983 Morgan 384



1983 Morgan 384





1983 Morgan 384



1983 Morgan 384