



Eclipse

112' (34.14m) 2002 Westport 112 Motor Yacht
Sarasota Florida United States



OVERVIEW

\$4,950,000

Manufacturer:	Westport		
Engines:	2 MTU	Hull Material:	Fiberglass
Engine Model:	16V2000 DDEC	Cruise Speed:	20 Knots
Engine HP:	1800	Max Speed:	26 Knots
Beam:	23' 6"	Cabins/Heads:	4 / 5
Max Draft:	5' 7"	Fuel Type:	Diesel
Water:	1000 G (3785.41 L)	Fuel:	5500 G (20819.76 L)



Data Sheet

Category: Motor Yachts
Subcategory: Pilothouse
Condition: Used
Model Year: 2002
Beam: 23'6" (7.16m)
Max Draft: 5' 7" (1.70m)
LOA: 112' (34.14m)
Cabins: 4
Sleeps: 8
Heads: 5

Crew Cabins: 3
Crew Sleeps: 4
Maximum Speed: 26 Knots
Cruise Speed: 20 Knots
Fuel Type: Diesel
Hull Material: Fiberglass
Hull Finish: Gloss

Stabilizers: Zero Speed
Stabilizer Brand: Side Power
Fuel Tank: 5500 gal (20819.76 liters)
Fresh Water: 1000 gal (3785.41 liters)
Holding Tank: 600 gal (2271.25 liters)
HIN/IMO: WPS07705E102
Stock #: BRA2401-CC

Engines/Generators

Engine 1

MTU
16V2000 DDEC
Inboard
1800HP
1342.26KW
Fuel: Diesel
Hours: 7200
Hours Date: 08-30-2023
Year: 2002
Serial #: 1419
Location: Port

Engine 2

MTU
16V2000 DDEC
Inboard
1800HP
1342.26KW
Fuel: Diesel
Hours: 7200
Hours Date: 08-30-2023
Year: 2002
Serial #: 1421
Location: Starboard

Summary/Description

For Sale

"Eclipse" is a 2002 112ft Westport Motor Yacht and is a shining example of American built craftsmanship and sea keeping ability. She has been upgraded with Side Power Zero Speed stabilization. This vessel sleeps eight owners/guests in four staterooms each with their own heads. Her spacious full beam salon and master stateroom will envelop you in comfort during those days spent relaxing aboard. Each guest will appreciate their large staterooms with private heads and upgraded AV. While entertaining aboard you will find each area was thoughtfully designed to take advantage of it's location onboard. From the fore deck's U-shaped lounge with custom Fusion/JL audio system to the main deck aft area's walk around bar, weather resistant 65" Samsung HDTV and large lounge with high gloss teak table for those days you wish to enjoy the amazing views outside. Her minimalist 5'7" draft allows access to many anchorages and marinas where vessels of her similar length just are not able to get in to. Eclipse has it all, speed, style, range, plus comfort and is ready for the next adventure to far horizons.

Salon

The 112 Westport is built with a full beam salon to maximize it's interior space. Full length tinted glass windows with custom treatments provide ample views of the outside. This area features a forward formal dining area with custom table with chair set that seats 8 and lighted tray ceiling. Raised buffets with cabinet storage are located to port and starboard. As you move aft there is a very comfortable seating area including plush full size couch, love seat, arm chair, coffee table and matching end tables. A separated area with 2 high back chairs and game table lies to starboard. Just to port of the double glass sliding door is a granite topped wet bar with mirrored back splash and built in compact 25 bottle wine chiller. Extensive outboard storage cabinets round out the area. The digital entertainment center was extensively upgraded in 2023 with all new 60" Samsung flat screen HDTV, Samsung Blu Ray player, DirecTV box and Marantz AV system all controlled by an 10" Ipad with Crestron app.

Galley

Eclipse features a large "country kitchen" style galley with cabinet storage above and below. Custom granite counters and backslash provide lots of space to prepare a chef inspired meal. Custom deep slide out pantry storage was built in to an available space forward of the Sub-Zero refrigerator for added space. A door can be closed isolating the formal area aft from the galley if needed. The granite topped bar separating Eclipse's galley from it's attached dining area includes 2 high back padded chairs. The settee consists of a u-shaped leather upholstered seating area and granite table top. Digital entertainment was upgraded in 2023 with new 60" Samsung HDTV, Apple TV, Marantz AV system and 10" Ipad with Crestron app.

High end galley appliances are as follows:

- Large double door Sub-Zero refrigerator/freezer
- Scotsman under counter ice maker
- Bosch under counter dishwasher
- Wolf convection oven
- JennAire induction cooktop
- LG Microwave above cooktop

Port and Starboard Foyers

The starboard foyer has marble inlaid floors, marble console with marble shelf, bronzed wall mirror, an overhead mirror and sliding side door to access the foredeck.

The port foyer has marble flooring, guest laundry with Miele washer and Miele dryer. A sliding side door to the foredeck and stairwell leading to 3 staterooms is also located here.

Stew Pantry and Doghouse

Forward and to starboard of the salon is access to the stew pantry and doghouse. The stew pantry features ample cabinet storage, JennAir double drawer refrigerator, breaker panel and pocket door to interior doghouse.

Master Stateroom

The full beam master stateroom is accessed by double entry doors. Features include a California king sized walk around berth with two drawers under, mirrored headboard, overhead treatment and recessed lighting. To port is 14 drawer dresser for your personal clothing. Starboard of the berth is a built in desk with slide out seat. The large cedar lined walk in closet has plenty of room to accommodate a couple's wardrobe. Forward, to port and starboard, are separate entry doors to the "his and hers" bathroom. A 55" curved Samsung HDTV is wall mounted for viewing at all angles. In 2023 the digital entertainment system was upgraded with Apple TV, Marantz AV system, DirecTV box and 10" Ipad with Crestron control app.

Master Head

This vessel features a "His and Hers" bathroom joined by a glass stall shower and Jacuzzi tub. Entering from port or starboard will take you in to separate bathrooms with mirrored vanity, custom granite topped counters, sinks, cabinets, drawers and Royal Flush toilets. The tub fills via Grohe waterfall style faucet and features multiple water jets. A stall shower has 6 horizontal adjustable wall mounted heads for full body simultaneous coverage.

Guest Stateroom Port

The port guest stateroom features a walk around queen bed with innerspring mattress, upholstered headboard, custom recessed LED lighting and four drawer storage under. There is a cedar lined wardrobe with interior light to hang clothing. On the outboard side is a 6 drawer dresser just aft of the entertainment center. In 2023 the digital entertainment system was upgraded with 27" LG TV, Apple TV, Marantz AV system, 10" Ipad with Crestron control app and Blu-Ray player.

Guest Head Port

The en-suite head features custom granite topped counters, mirrored vanity, marble floor, Kohler sink, custom molded fiberglass stall shower, Grohe fixtures and a Royal Flush toilet.

Guest Stateroom Starboard

This stateroom has side by side twin berths with innerspring mattresses, upholstered headboard, custom recessed LED lighting and two drawer storage under. A full sized hanging locker provides the extra space for formal attire. In 2023 the digital entertainment system was upgraded with 32" LG TV, Apple TV, Marantz AV system, 10" Ipad with Crestron control app and Blu-Ray player.

Guest Head Starboard

The en-suite head features custom granite topped counters, mirrored vanity, marble floor, Kohler sink, custom molded fiberglass stall shower, Grohe fixtures and a Royal Flush toilet.

VIP Stateroom Forward

The bow VIP stateroom is accessed by private stairwell forward of the galley. It includes a walk around style queen berth with innerspring mattress, upholstered headboard, custom recessed LED lighting and four drawers under. Another 4 drawers of storage space is located below the entertainment center. Just inside the door is comfortable couch, a great quiet place for catching up on a novel. This stateroom also includes a large cedar lined walk in closet. In 2023 the digital entertainment system was upgraded with 27" LG TV, Apple TV, Marantz AV system and 10" Ipad with Crestron control app.

VIP Guest Head

The bow VIP stateroom is accessed by private stairwell forward of the galley. It includes a walk around style queen berth with innerspring mattress, upholstered headboard, custom recessed LED lighting and four drawers under. Another 4 drawers of storage space is located below the entertainment center. Just inside the door is comfortable couch, a great quiet place for catching up on a novel. This stateroom also includes a large cedar lined walk in closet. In 2023 the digital entertainment system was upgraded with 27" LG TV, Apple TV, Marantz AV system and 10" Ipad with Crestron control app.

Day Head

Just forward and to port of the salon is the day head. It features custom marble vanity, marble flooring, gold accented fixtures, custom LED lighting, mirrored overhead and Royal Flush toilet.

Pilothouse

Eclipse was built with an enclosed raised pilothouse. A large seating area aft with high gloss wood table top will provide owners and guests with a 270 degree view of the outside world in air conditioned comfort. A captain's desk with floating stool seating and book shelf will allow crew to plan that ultimate long range adventure. A single center line adjustable captain's chair gives the operator a great view of his surroundings and monitoring equipment. To port and forward is a chart table and jump seat. The helm electronics were just extensively upgraded in 2022/2023 and include Garmin 8622 multi-function display, Garmin AIS800, Furuno CV-588 depth sounder, Airmar DST810 transducer, Airmar DST800-L-235-N2 transducer and MarineNav computer with TimeZero software. Rounding the navigation system out is an 7610 Garmin, dual Furuno radar systems, Furuno AIS, dual VHF radio systems and 4 view CCTV camera system. In 2022 a custom Allen Bradley 3 console Panelview touch screen vessel interface and monitoring system with custom modified Westport VIC software by Rexel was installed. In the pilothouse is the main 15" touchscreen display and 2 10" remote touch displays are located on main deck level and the crew area. A lockable glass sliding door provides quick access to the flybridge.

Flybridge

The flybridge of Eclipse is a marvel of space and function. The upper level features a beautiful teak deck. Forward wind protection is provided by the clear hard acrylic 270 degree enclosure with fold up wings. A large L shaped settee with HI/LOW high gloss teak table is to starboard for an alfresco dining experience. To port is an island wet bar with 4 swivel top stools, Fire Magic propane bbq grill, under counter ice maker and separate fridge. Above is an electronic actuated fold down 60" Samsung HDTV with brand new DirecTV box, Apple TV, Marantz AV system and 10" Ipad with Crestron control app. Thumping audio is provided by a separate Fusion Apollo head unit, JL amplifier and JL speakers. A center lined helm with 3 captain's chairs includes 2023 upgraded electronics consisting of Garmin 8617 multifunction display

and Icom M605 VHF w/AIS. There is also a networked Garmin 7610 to port and Garmin repeater screen. Port and starboard wing stations will give the captain superior views while docking.

Down 3 steps will bring you to the flybridge aft deck which can be configured to suit your personal needs. The 6 person built in Jacuzzi hot tub can be converted to a sun pad with it's custom folding top and cushions. Just across is another L shaped seating area with high gloss teak table top. Both of the above areas can be covered from the sun via a custom removable 3 tier sun shade. Custom JL sound system sets the musical mood. Currently Eclipse has 2, 2017 Yamaha Wave Runner EX Jet Skis with 6hrs, mounted on custom cradles, that will be included in sale. A Nautical Structures CEZ2000-EX crane provides the lifting power to launch the skis. This crane is large enough to handle a tender if that is more your style.

Finally a molded spiral stair case with sliding door will provide outdoor access to the cockpit below.

Swim Platform

The teak swim platform has removable stainless steel railings. Built in to the deck are ports for whips used when docking the included Yamaha Wave Runners. A 100USgal deck fueling station with pump is ready to provide gasoline to keep the skis or tender fueled. Stern cleats, dual Maxwell 2500# 24vDC capstans, starboard 100A cord storage and port hidden hot/cold deck shower outlet are here as well. Mounted in the transom is a water tight door with access to the crew area.

Side Deck and Fore Deck

From sliding doors located in the midships foyers you will gain access to the side decks. Bulwark gates open outward and can be configured with boarding stairs. Mount for the MarQuipt 6' Sea Steps boarding stairs is on the starboard side deck walkway. Moving forward there is a molded in U-shaped settee with cushions. Audio is provided by a Fusion head unit, JL amplifier and JL speakers. Just aft of the settee is a large Bosun's locker storage area. On deck is mounted the dual Maxwell 4500 hydraulic anchor windlass systems, chain locker and fore deck cleats.

Crew Area

The crew cabins are located aft with access from the main deck via spiral staircase or flush transom water tight door. Inside you will find a common area with settee, sink, storage drawers, storage cabinets, microwave, fridge/freezer combo, 27" TV with DirecTV system and Fusion Apollo head unit with speakers. The crew washer and dryer is conveniently located below a main breaker panel for smart use of space. In the rear of the crew area is another storage space with dual under counter freezers, cabinets and overhead storage. There are 3 crew cabins that sleep a total of 4. Captains quarters features a Full size innerspring mattress, desk with chair, large hanging locker, multiple drawer dresser, 32" Samsung HDTV, DirecTV, private head with stall shower and mirrored vanity. Aft crew berth has one single bunk, hanging locker, TV and shared head with stall shower. Starboard crew berth is an over/under 2 bunk layout with hanging locker, TV and shared head with stall shower. Access to the engine room is forward through the crew area separated by a double dogged air tight door.

Electronics

All new in 2023-

- 8x Crestron MC4-R media room controllers
- 8x Marantz SR7015 8k receivers
- 8x Apple TV units
- Samsung 65" LED HDTV
- Samsung 60" LED HDTV
- 2x LG 27" LED HDTVs

- LG 32" LED HDTV
- KVH HD11 TracVision
- KVH TV3 TracVision Hub
- KVH Ultra Compact TracPhone
- Cisco SG350 and RV345 routers
- Ruckus Zoneflex 610 wifi access point and ZD1205 zone director
- PrepWave vessel wifi cellular data system
- 10" I pads for Crestron AV control system.
- Garmin 8622,
- Garmin AIS800,
- Furuno CV-588 depth sounder,
- Airmar DST810 transducer,
- Airmar DST800-L-235-N2 transducer
- Garmin 8617
- Icom M605 VHF w/AIS

Other electronics include-

- 2022 New custom Allen Bradley 3 screen touch panel (15" & 2 10") vessel interface and monitoring system with customized Westport VIC software by Rexel.
- 2022 MarineNav DC computer with Time Zero software and digital charts
- 2x Furuno radar systems with 20" displays
- Icom SSB
- Simrad AP20 auto pilot
- Icom and Standard Horizon VHF's
- Furuno Weather Fax
- Furuno AIS

Electrical System

- Aft 100A 240V single phase 60hz shore power cord
- Midships starboard 100A 240V single phase 60hz shore power cord with Cablemaster
- 2 new shore power boost transformers with wifi monitoring new in 2023
- Generator 12v starting batteries new in 2023
- Main engine 24v starting batteries new in 2023
- 12v and 24v house batteries replaced in 2023
- New 12v100A and 24v60A battery chargers
- ACR RCL-100 search light with dual controls
- 13 underwater lights facing aft and out of the port and starboard side.
- 120gal hot water heater
- Towing light with separate breaker

Mechanical Equipment

- Michigan 48x49 5 blade propellers reconditioned in 2023.
- 2x Sea Recovery 1200 water makers and boost pumps.
- 3x 5 ton chillers, frequency drives and pump relays replaced in 2018.
- All 13 air handlers were replaced in 2023 with Aqua Air units.
- New Head Hunter black water tank monitor in crew area.
- Jastram hydraulic steering system with selector switches. System rebuilt in 2023.
- Wesmar 16" 40HP hydraulic bow thruster with new gear motor in 2020.

- 2x Maxwell hydraulic windlasses with band breaks.
- 2x Maxwell 2500 24vDC swim step capstans.
- Anchor chain wash down system.
- 2 Fortress stainless steel anchors with custom welded anchor stoppers.

Engine Room

Entering the engine room you first notice how open and well planned the layout is. At it's heart are 2 MTU/DDEC 16V2000 1800hp engines coupled to Twin Disc gear boxes. These power plants have proven over time their strength and durability as marine propulsion systems. Outboard in the engine room are dual Northern Lights generators enclosed in sound shields. To starboard is a 65KW model and on the port side a 50KW (quiet) generator designed to operate at lower rpm reducing noise without sacrificing output. This option is great for nights on the hook or when you require extra dockside power and don't want to disturb the neighbors. Both generators are coupled to PTO pumps with remote selector switching which provides hydraulic pressure for system operations. Forward of the generators are Side Power Zero Speed stabilizers, a 2017 upgrade over the factory installed units. 3, 5 ton chiller units located on a raised shelf provide the right temperature for your interior climate. On the other side you can't overlook the work area featuring a large bench, multi drawer tool box, overhead storage cabinets, vise, sink and hose spigot. Other notable features are lube oil and waste oil tanks, air compressor and Cablemaster shore power cord storage. Even with all of this, there is ample room to move around and work in the 112's engine room.

- 2x MTU 16V2000 1800hp main engines
- Twin Disc gear boxes overhauled in 2019
- Northern Lights 65KW 1800rpm generator with sound shield. Top end rebuilt in 2018.
- Northern Lights 50KW 1200rpm (quiet) generator with sound shield. Top end rebuilt in 2018.
- Both generators have hydraulic PTO systems installed with remote selector switch.
- 60Gal lube oil tank with deck fill, fill spigot and drain spigot
- 50Gal lube oil waste tank with portable extraction pump and quick disconnects to fit all engines, generators and gear boxes.

Hull

The 112 Westport raised pilothouse hull is a highly regarded and proven world traveler. It's classic yacht lines and proven features stand out in the sea of "ultra modern" cookie cutter builders. Eclipse has exterior features not found on the standard models. Upgraded black painted hard top stanchions, sat domes, mast, antennas and accessories as well as black wrap backed port and starboard name board areas is an eye catching accent.

13 Underwater lights wrap around the sides and stern creating a stunning night time look. Haul out with full bottom paint and Prop Speed was completed 09/04/2022.

Fire and Safety Equipment

- 4 CCTV cameras: 2 in engine room, flybridge aft deck and swim step.
- Allen Bradley touchscreen fire, CO2, heat, exterior door, and bilge monitoring system.
- Halon engine room automatic fire system, yearly inspected.
- Halon electrical station automatic fire system, yearly inspected.
- Smoke/CO2 detectors in every room.
- Handheld fire extinguishers in every zone, yearly inspected.
- 2x 8 passenger life rafts mounted in cradles on the flybridge aft deck. Current inspection.
- 2x Life rings mounted on flybridge hangars.
- All required PFDs and safety equipment.
- Emergency automatic DC LED lighting throughout vessel.

Additional Equipment

- 2 sets of removable salon runners.
- Removable pilothouse runner.
- Covers for all exterior seating areas and tables.
- Dual Sea Recovery 1200 water makers and boost pumps.
- Inflatable jet ski dock.

Exclusions

Exclusions include but are not limited to seller's personal items. A detailed list of exclusions will be provided at time of sale upon written request.

Notable Upgrades

2017:

- Stabilizers upgraded to Side Power Zero Speed stabilizers providing a smooth stable ride in all conditions
- Custom black Awlgrip accent paint to hardtop stanchions, sat domes, antennas, mast and accessories
- Custom fishing rod and reel racks built in to the aft crew storage area and engine room
- Clearmate dual pass water purification system

2018:

- Northern Lights generators both received top end rebuilds including cylinder heads, turbos, injectors, injection pump
- HVAC 3 Chillers, frequency drives, pump relays replaced with new
- Galley settee recovered in leather

2019:

- Overhaul both port and starboard transmissions
- Service port and starboard transmission coolers
- New pinion for port transmission

2020:

- New hydraulic bow thruster hydraulic gear motor
- New 24v 60a battery charger
- New PSS shaft seals
- Whole vessel upgraded to low draw LED lighting

2021:

- Foredeck seating area audio system consisting of Fusion stereo with JL amp and speakers
- Custom flybridge aft deck tri shade
- New security and monitoring camera system with controls
- MarineNav computer system with Time Zero software and all necessary charts
- New JennAir double drawer refrigerator in stew pantry

2022:

- New crew area lighting converted to high output low draw LED

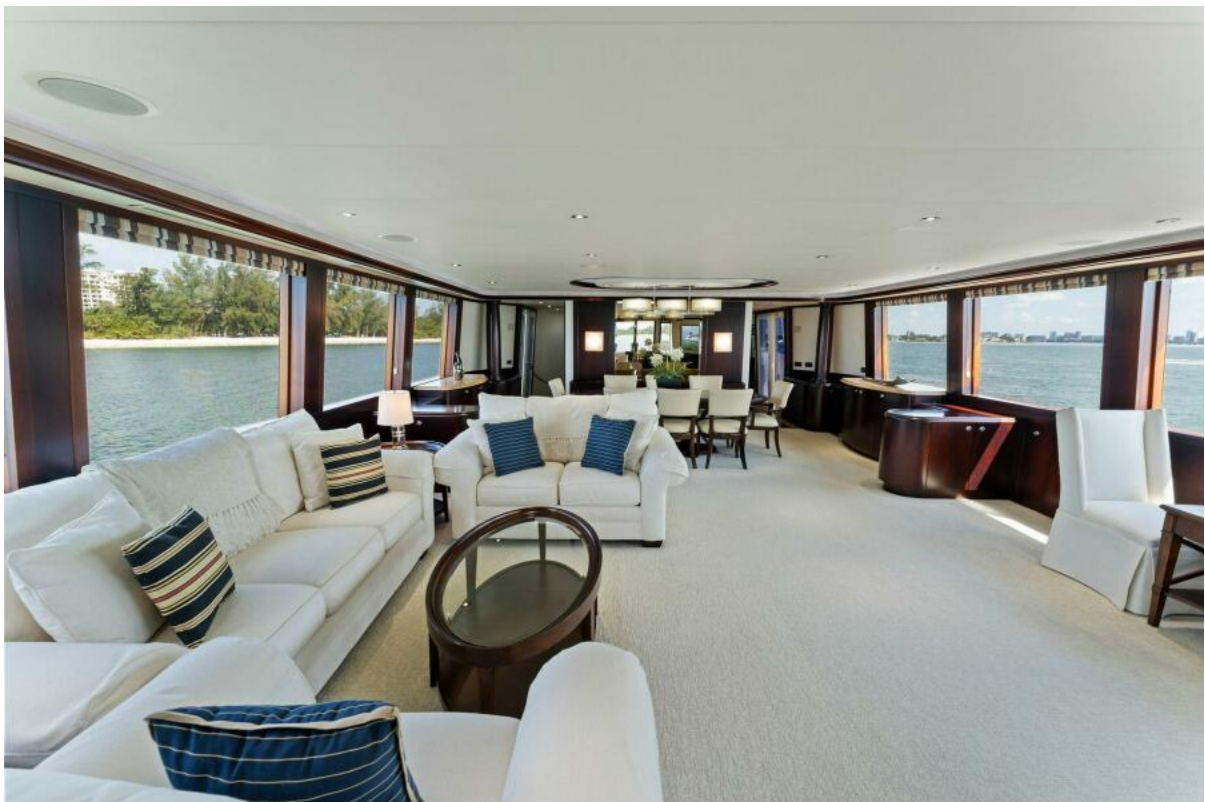
- New main engine Groco through hulls, ball valves and sea strainers
- 6 new MTU/Sturdy digital engine displays, interfaces, control console, ECM and ASM modules
- Propellers reconditioned
- Propeller shafts removed and balanced
- New cutlass bearings
- Shaft seal rotors resurfaced
- 13 new Aqua Air air handlers and plumbing
- New custom Allen Bradley 3 screen touch panel (15" & 2 10") vessel interface and monitoring system with customized Westport VIC software by Rex

2023:

- Extensive navigation and electronics Upgrades
- Pilothouse electronics upgrade: Garmin 8622 MFD, Garmin AIS800, Furuno CV-588 depth sounder, Airmar DST810 transducer, Airmar DST800-L-235-N2 transducer
- Flybridge electronics upgrade: Garmin 8617MFD, Icom M605 VHF w/AIS
- 2x Shore power boosters transformers with wifi monitoring
- Jastram multi station steering system rebuild replacing components as necessary
- Custom port and starboard Deangelo exhaust risers
- Owner/Guest AV upgrades to include-
- 8x Crestron MC4-R media room controllers
- 8x Marantz SR7015 8k receivers
- 8x Apple TV unit 1x 60", 2x LG 27", 1x 32" LG LED TVs,
- 1x 60", 2x LG 27", 1x 32" LG LED TVs
- KVH HD11 TracVision
- KVH TV3 TracVision Hub
- KVH Ultra Compact TracPhone
- Cisco SG350 and RV345 routers
- Ruckus Zoneflex 610 wifi access point and ZD1205 zone director
- PrepWave vessel wifi cellular data system
- 10" Ipads with Crestron AV control system
- Cockpit 65" Samsung TV fitted in water resistant enclosure
- New Side Power ECU, controller and cables
- Replaced starboard generator raw water pump and fuel pump. Full annual service
- Fusion Apollo head unit for flybridge
- Teak deck restoration including sanding
- 12v 100A battery charger
- House/Engine/Generator battery replacement, 10x 8D AGM batteries and 24v 60amp charger
- Blackwater Tank Sentry
- Flybridge enclosure: replaced center panel, replaced all zippers and adjusted stitching



2002 112 Westport Motor Yacht Eclipse Profile



2002 112 Westport Motor Yacht Eclipse Salon



2002 112 Westport Motor Yacht Eclipse Salon



0002002 112 Westport Motor Yacht Eclipse Master Stateroom



2002 112 Westport Motor Yacht Eclipse Deck



2002 112 Westport Motor Yacht Eclipse Fore Deck



2002 112 Westport Motor Yacht Eclipse Salon



2002 112 Westport Motor Yacht Eclipse Salon



2002 112 Westport Motor Yacht Eclipse Salon



2002 112 Westport Motor Yacht Eclipse Salon



2002 112 Westport Motor Yacht Eclipse Salon



2002 112 Westport Motor Yacht Eclipse Salon



2002 112 Westport Motor Yacht Eclipse Salon



2002 112 Westport Motor Yacht Eclipse Galley



2002 112 Westport Motor Yacht Eclipse Galley



2002 112 Westport Motor Yacht Eclipse Galley



2002 112 Westport Motor Yacht Eclipse Galley



2002 112 Westport Motor Yacht Eclipse Galley



2002 112 Westport Motor Yacht Eclipse Galley



2002 112 Westport Motor Yacht Eclipse Galley



2002 112 Westport Motor Yacht Eclipse Galley



2002 112 Westport Motor Yacht Eclipse Day Head



2002 112 Westport Motor Yacht Eclipse Day Head



2002 112 Westport Motor Yacht Eclipse Companionway



2002 112 Westport Stairway to Master Stateroom Motor Yacht Eclipse Stairway



2002 112 Westport Motor Yacht Eclipse Stairway to Master Stateroom



2002 112 Westport Motor Yacht Eclipse Foyer



2002 112 Westport Motor Yacht Eclipse Master Stateroom



2002 112 Westport Motor Yacht Eclipse Master Stateroom



2002 112 Westport Motor Yacht Eclipse Master Stateroom



2002 112 Westport Motor Yacht Eclipse Master Stateroom



2002 112 Westport Motor Yacht Eclipse Master Stateroom Cedar Closet



2002 112 Westport Motor Yacht Eclipse Master Head



2002 112 Westport Motor Yacht Eclipse Master Head



2002 112 Westport Motor Yacht Eclipse Master Head



2002 112 Westport Motor Yacht Eclipse Master Head



2002 112 Westport Motor Yacht Eclipse Master Head



2002 112 Westport Motor Yacht Eclipse VIP Stateroom



2002 112 Westport Motor Yacht Eclipse VIP Stateroom



2002 112 Westport Motor Yacht Eclipse VIP Head



2002 112 Westport Motor Yacht Eclipse VIP Head



2002 112 Westport Motor Yacht Eclipse Starboard Guest Stateroom



2002 112 Westport Motor Yacht Eclipse Starboard Guest Head



2002 112 Westport Motor Yacht Eclipse Starboard Guest Head



2002 112 Westport Motor Yacht Eclipse Port Guest Room



2002 112 Westport Motor Yacht Eclipse Port Guest Head



2002 112 Westport Motor Yacht Eclipse Port Guest Head



2002 112 Westport Motor Yacht Eclipse Port Guest Head



2002 112 Westport Motor Yacht Eclipse Stairway to Cockpit



2002 112 Westport Motor Yacht Eclipse Cockpit



2002 112 Westport Motor Yacht Eclipse Cockpit



2002 112 Westport Motor Yacht Eclipse Helm



2002 112 Westport Motor Yacht Eclipse Cockpit



2002 112 Westport Motor Yacht Eclipse Cockpit



2002 112 Westport Motor Yacht Eclipse Cockpit



2002 112 Westport Motor Yacht Eclipse Cockpit



2002 112 Westport Motor Yacht Eclipse Cockpit



2002 112 Westport Motor Yacht Eclipse



2002 112 Westport Motor Yacht Eclipse Deck



2002 112 Westport Motor Yacht Eclipse Deck



2002 112 Westport Motor Yacht Eclipse Deck



2002 112 Westport Motor Yacht Eclipse Deck



2002 112 Westport Motor Yacht Eclipse Deck



2002 112 Westport Motor Yacht Eclipse Deck



2002 112 Westport Motor Yacht Eclipse Deck



2002 112 Westport Motor Yacht Eclipse Deck



2002 112 Westport Motor Yacht Eclipse Fore Deck



2002 112 Westport Motor Yacht Eclipse Deck



2002 112 Westport Motor Yacht Eclipse Stairway to Flybridge



2002 112 Westport Motor Yacht Eclipse Flybridge



2002 112 Westport Motor Yacht Eclipse Flybridge



2002 112 Westport Motor Yacht Eclipse Flybridge



2002 112 Westport Motor Yacht Eclipse Flybridge



2002 112 Westport Motor Yacht Eclipse Flybridge



2002 112 Westport Motor Yacht Eclipse



2002 112 Westport Motor Yacht Eclipse Flybridge



2002 112 Westport Motor Yacht Eclipse Flybridge



2002 112 Westport Motor Yacht Eclipse Flybridge



2002 112 Westport Motor Yacht Eclipse Fore Deck



2002 112 Westport Motor Yacht Eclipse Fore Deck



2002 112 Westport Motor Yacht Eclipse Fore Deck



2002 112 Westport Motor Yacht Eclipse Fore Deck



2002 112 Westport Motor Yacht Eclipse Crew Quarters



2002 112 Westport Motor Yacht Eclipse Crew Quarters



2002 112 Westport Motor Yacht Eclipse Crew Quarters



2002 112 Westport Motor Yacht Eclipse Crew Quarters



2002 112 Westport Motor Yacht Eclipse Crew Quarters



2002 112 Westport Motor Yacht Eclipse Crew Quarters



2002 112 Westport Motor Yacht Eclipse Crew Head



2002 112 Westport Motor Yacht Eclipse Crew Head



2002 112 Westport Motor Yacht Eclipse Crew Head



2002 112 Westport Motor Yacht Eclipse Laundry



2002 112 Westport Motor Yacht Eclipse Mechanical



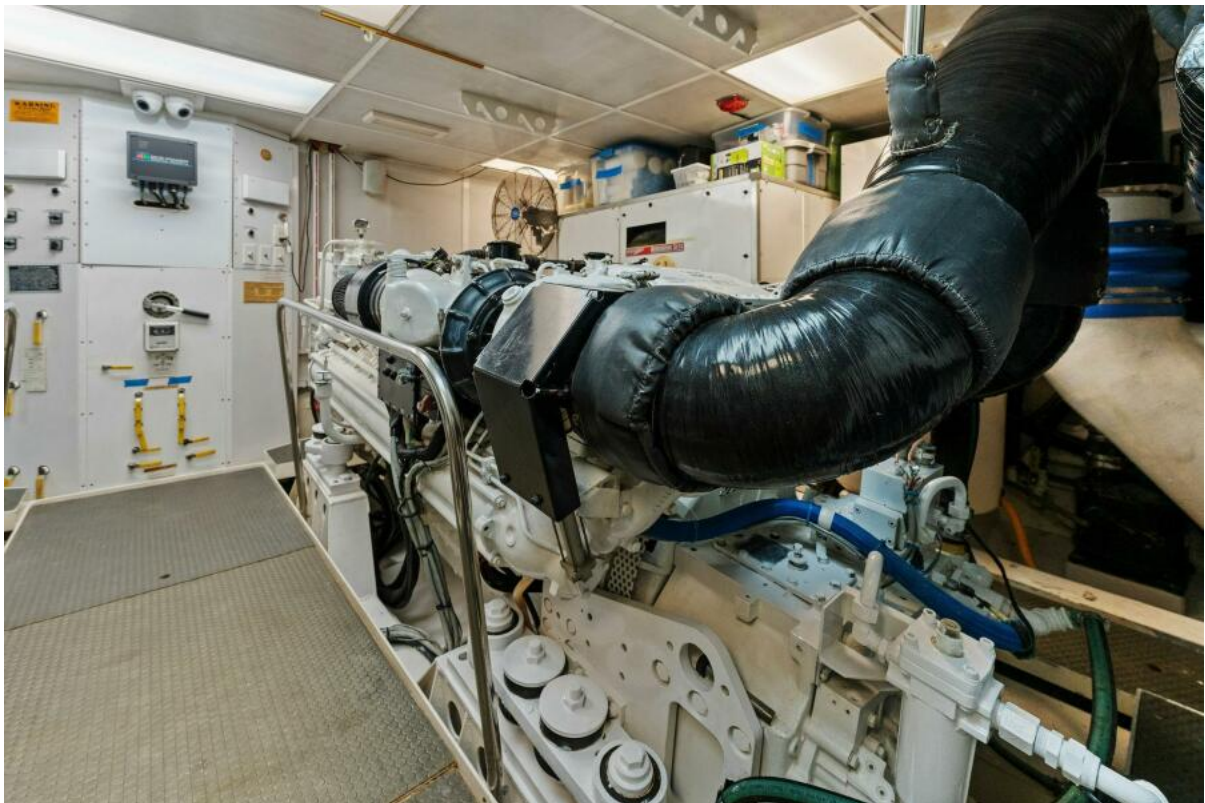
2002 112 Westport Motor Yacht Eclipse Mechanical



2002 112 Westport Motor Yacht Eclipse Engine Room



2002 112 Westport Motor Yacht Eclipse Engine Room



2002 112 Westport Motor Yacht Eclipse Engine Room



2002 112 Westport Motor Yacht Eclipse Engine Room



2002 112 Westport Motor Yacht Eclipse Engine Room



2002 112 Westport Motor Yacht Eclipse Engine Room



2002 112 Westport Motor Yacht Eclipse Engine Room



2002 112 Westport Motor Yacht Eclipse Engine Room



2002 112 Westport Motor Yacht Eclipse Engine Room



2002 112 Westport Motor Yacht Eclipse Engine Room



2002 112 Westport Motor Yacht Eclipse Engine Room



2002 112 Westport Motor Yacht Eclipse Engine Room



2002 112 Westport Motor Yacht Eclipse Engine Room



2002 112 Westport Motor Yacht Eclipse Profile



2002 112 Westport Motor Yacht Eclipse Aerial View



2002 112 Westport Motor Yacht Eclipse Aerial View



2002 112 Westport Motor Yacht Eclipse Aerial View



2002 112 Westport Motor Yacht Eclipse Aerial View



2002 112 Westport Motor Yacht Eclipse Aerial View



2002 112 Westport Motor Yacht Eclipse Aerial View



2002 112 Westport Motor Yacht Eclipse Swim Platform



2002 112 Westport Motor Yacht Eclipse



2002 112 Westport Motor Yacht Eclipse