



PURSUIT

124' (37.80m) 2002 Trinity Yachts Raised Pilothouse
Fort Lauderdale Florida United States



OVERVIEW

\$4,850,000

Manufacturer:	<i>Trinity Yachts</i>		
Engines:	2 MTU	Hull Material:	Aluminum
Engine Model:	16V2000	Cruise Speed:	15 Knots
Engine HP:	1800	Max Speed:	18 Knots
Beam:	26' 0"	Cabins/Heads:	5 / 6
Max Draft:	7' 5"	Fuel Type:	Diesel
Water:	2500 G (9463.52 L)	Fuel:	10500 G (39746.81 L)



Data Sheet

Category: Motor Yachts
Condition: Used
Model Year: 2002
Refit Year: 2022
Beam: 26' (7.92m)
Max Draft: 7' 5" (2.26m)
(0.00m)
LOA: 124' (37.80m)
Cabins: 5
Sleeps: 11
Full Beam Master: Yes
Heads: 6

Crew Cabins: 3
Crew Sleeps: 6
Maximum Speed: 18 Knots
Cruise Speed: 15 Knots
Range NM: 2250
Fuel Type: Diesel
Hull Material: Aluminum
Hull Shape: Semi Displacement

Gross Tonnage: 267
Stabilizers: Standard
Bow Thruster: Yes
Stern Thruster: Yes
Fuel Tank: 10500 gal (39746.81 liters)
Fresh Water: 2500 gal (9463.52 liters)
Classification: ABS
Builder: Trinity Yachts
Interior Designer: Dee Robinson
HIN/IMO: TYY12422K203

Engines/Generators

Engine 1

MTU
16V2000
Inboard
1800HP
Fuel: Diesel
Hours: 2380
Location: Port

Engine 2

MTU
16V2000
Inboard
1800HP
Fuel: Diesel
Hours: 2380
Location: Starboard

Summary/Description

PURSUIT is a 124' (37.8m) Trinity yacht built in 2002 and refit in 2022. She can accommodate 11 guests in 5 staterooms and 6 crew in 3 cabins.

Overview

PURSUIT (x-HAVEN) was built by Trinity Yachts in 2002 and underwent an extensive refit in 2017, a mechanical refit in 2019, and a soft goods and furniture refit in 2022. PURSUIT is in turnkey condition and ready for her new owner. She comfortably accommodates up to 11 guests in five well-appointed staterooms, with room for a crew of 6. Her full-beam owner suite, located below aft, features a king-size bed, vanity, sofa, and a large cedar-lined walk-in closet. steam shower, and loveseat. The His and Her bathrooms boast beautiful marble walls and floors and are separated by an etched glass steam shower. PURSUIT has a large queen VIP located forward on the main deck along with two mirroring queen VIP cabins forward below with a 5th cabin with side-by-side twin berths and a Pullman.

PURSUIT's recent interior refit was completed by Bonville and Associates in 2022 and showcases an elegant feeling with a beachy, nautical vibe making it the perfect vessel for relaxation. Her main salon features two columns, which define the dining/entertainment space from the main saloon area. This central space features a generous L-shaped sofa, oversized armchairs, a pop-up 46' TV, and a wet bar, and is ideal for relaxing and sharing the day's adventures. The formal dining area can accommodate up to 10 guests and the nearby modern galley is conveniently located for superior service, is fully equipped, and includes a large pantry with good storage.

Outdoor spaces are welcoming, spacious, and ideal for entertaining. The sundeck features a wet bar, L-shaped cushioned seating, dining, chaise lounges, and a hot tub. The air-conditioned aft deck includes another large dining table for all guests, access to the swim platform, a wet bar, an entertainment system, and more. The bow has been transformed into an oasis with a large sun pad and optional sail shade.

Powered by twin MTU 16V2000 engines, PURSUIT is a semi-displacement yacht that cruises around 15 knots, with a maximum speed of 18 knots and a range of 4200nm at 12 knots. Her shoal draft allows her access to shallow anchorages and easy Bahamas cruising. She has room for a host of toys and tenders that allow her guests to enjoy their time on the water. Looking to offset expenses with Charter? PURSUIT offers the perfect setup.

Key Features

- On-deck VIP stateroom with queen berth
- Full-beam owner suite located on the lower level midship
- His and her bathroom with steam shower
- High demand for charters offering 5 staterooms, 3 dining spaces, and a hot tub
- 3 x Cocktail bars perfect for entertaining

- MTU W-6 service completed late 2019 – Hours as of Jan 2024: Port 2,380 after W6, total hours 9,705; Starboard 2,216 after W6, total hours 9,641
- Koopnautic by Quantum Stabilizers while underway
- ABS Class Certification renewed June 2023
- Recently refit in 2022
- Starlink Wi-Fi

Walkthrough

One can enter PURSUIT onto the aft deck by steps up and through the aft bulwarks found on either side. One can also enter the aft deck from the swim platform with steps on either side of the transom. Once on the aft deck, one is greeted with a large, air-conditioned area with an isinglass enclosure that can be opened for fresh air when wanted. The spacious aft deck offers a built-in settee with a large teak table for dining for 12. Forward on the aft deck, one will find a large L-shaped bar with 4 fixed swivel bar stools. From the aft deck, one can go forward down the walkaround decks through a doorway on either side. There is a stairwell found on the aft side to take one to the bridge deck. Moving forward to the double doors will give one access to a beautiful and spacious main salon. Here one will find a bar to port with 3 loose bar stools. Moving forward there is a large L-shaped settee with two oval coffee tables and two comfortable barrel chairs. There is a large cabinet to starboard with ample storage and a pop-up TV. Moving forward one will find themselves in the full beam dining room with seating for 10, with a large buffet on either side.

Forward to port from the dining area, one will have access to the day bathroom. Continuing forward, one will enter a pantry and then a large professional layout galley with all the amenities needed to prepare gourmet meals. There is a port entrance with access to the crew lounge and two cabins, one double captain's cabin, and one cabin with over and under berths, both with ensuite. Forward to starboard one will enter the formal foyer with access to board on the starboard side midship. Here one will find stairs to the guest foyer and pilothouse, and access to the on-deck VIP with queen berth, ensuite with shower, closets, entertainment, and ample storage. Back in the formal foyer, one can go down the stairs to the large guest foyer. There one will find a guest beverage service area with a pull-out fridge. Forward of the guest foyer, one will find two matching VIP queen berth cabins with ensuite showers, closet, entertainment, and ample storage. Moving aft from the guest foyer to port one will find a twin cabin with ensuite with shower, closet, entertainment, and ample storage. Continuing aft one will find a huge full beam master with a spacious his and her bath with a large connecting steam shower, walk-in closet, vanity, and chest of drawers to port and settee and chest of drawers to starboard, entertainment, and ample storage.

Back up to the formal foyer, one can go up the stairs to find the pilothouse with state-of-the-art navigation, adjustable Stidd captain's seat, raised settee, and table with excellent viewing of the day's travel. Going aft in the pilothouse up six steps one will arrive at a huge bridge deck with helm and navigation and settee to port and a matching settee to starboard. There is a large L-shaped settee with dining for 10 to port and an L-shaped fully equipped bar to starboard with 4 fixed bar stools. Further aft in this space, one will find a jacuzzi for 8, and 3 full-size adjustable loungers with additional storage to starboard all found under a hard framed awning with an opening roof when wanted. Further aft on the bridge deck, one will find the boat deck with ample room for tender and toys. In this area to starboard one will find the stairwell to deliver one to the aft main deck. If one goes down either side of the transom to the swim platform one can enter the foyer to the engine room. To port is an area for equipment and a workshop, to starboard is a double berth engineer's cabin with an ensuite. Moving forward in the engine room foyer one will go through a watertight door to find a large full beam engine room that is in immaculate condition.

Main Salon and Dining Area

- Large L-shaped sofa, two round coffee tables and 2 x barrel chairs
- Intimate wet bar with 3 x chairs on the port side
- 2 x Pull out Subzero refrigerator drawers, ice maker and sink
- Convertible dining table with 10 chairs
- Apple TV
- Sony PS4 with digital wireless headphones
- Samsung 46" 8000 Series Smart TV custom flat panel
- Denon AVRX4000 Integrated Network 7-Channel receiver with surround sound
- Blu-ray disk players with Wi-Fi
- 2 x Integrated wine coolers
- Day head

Galley

- Wolf 5-burner glass cooktop
- Sub-Zero stainless steel 2-door refrigerator and freezer
- 2 x KitchenAid stainless steel Supra convection ovens
- KitchenAid stainless steel Supra microwave oven
- Stainless steel vented hood with light
- Fire suppression system for stove
- Stainless steel sink with disposal
- 2 x Stainless Steel sinks
- 2 x Bosch stainless steel dishwashers
- Whirlpool stainless steel ice maker, bin-type
- KitchenAid stainless steel trash compactor
- KitchenAid stainless steel upper refrigerator with lower freezer drawer
- Large pantry
- Coffee maker
- Espresso machine

- 15" Flipdown LED HDTV
- Large windows for a comfortable setting

Owner Suite

Located on the lower deck aft, the owner's full beam stateroom features a walk-around king-size bed facing forward. There is a walk-in closet to starboard, plentiful drawers for storage, a large HD Smart TV, Apple TV, and Apple airplay. Comfortable seating area starboard and a desk and vanity area to port. Entrance to the en-suite bathroom is found on either side of the cabin and features a large central shower with multiple jets and bench seats. On either side are his-and-hers sinks and bathroom facilities which are separated by privacy glass.

- Full beam owner stateroom king-size berth
- 2 x Nightstands
- Dressing table
- Sofa
- Large walk-in closet
- Locked owner closet with custom wine racks
- 2 x Private heads elegantly appointed in marble, separated by a large marble steam shower with glass doors
- Samsung 55" 3D - 1080p low-profile depth TV Pop-Up
- Denon AVR-E400 Network home theater receiver
- Blu-ray disk players with Wi-Fi

On-Deck VIP Stateroom

Located just forward on the port side, the on-deck VIP suite features a comfy queen size bed, and large windows allowing for full views of the ocean from your bed. A spacious en-suite bathroom with shower.

- Queen-size berth
- Ensuite bathroom with enclosed shower and marble sink
- Samsung 22" HDTV - LED - 1080p
- Blu-ray disk players with Wi-Fi
- Denon AVR-E400 Network home theater receiver

Lower Deck Accommodations

Stairs on the starboard side lead to the lobby with a guest coffee station and refrigerated beverage drawers. Port VIP queen stateroom and starboard VIP queen stateroom feature comfy queen-size beds with an en-suite bathroom

featuring a stall shower, sink, and head. entertainment system with smart TV, Apple TV, and Airplay Midships is the Twin Guest Stateroom with a Pullman bunk, en-suite shower, and ample storage. All cabins feature crisp hotel linens, individual climate control, and port holes for natural light, with blackout curtains/blinds for nighttime. Robes, hairdryers, laundry hampers, and luxurious bath products.

Port VIP Stateroom

- Queen-size berth
- Samsung 32" HDTV - LED 5000 Series 1080p with Dolby Digital Plus Dolby Pulse surround sound
- Blu-ray disk players with Wi-Fi
- Private marble bathroom with enclosed shower

Starboard VIP Stateroom

- Queen-size berth
- Samsung 32" HDTV - LED 5000 Series 1080p with Dolby Digital Plus Dolby Pulse surround sound
- Blu-ray disk players with Wi-Fi
- Private marble bathroom with enclosed shower

Twin Guest Stateroom

- 2 x Side-by-side berths separated by a nightstand
- 1 x Overhead Pullman berth
- Samsung 22" - HDTV LED 1080p television
- Blu-ray disk players with Wi-Fi
- Marble bathroom with enclosed shower

Crew Accommodation and Mess

Crew Mess

- Sub Zero refrigerator upper/lower unit
- Sharp TV 36" HDTV with separate DTV receiver
- Miele washer and dryer, stacked
- Alarm Panel (Bilge, Tank CO2)

Accommodation

- Captain's cabin with double berth
- Crew berth with over/under bunk beds
- 3rd Crew cabin aft for Engineer + 1

Flybridge

- Nautical Structures 3500-lb. electro-hydraulic davit
- Covered helm station with full instrumentation
- Wing station with cushioned bench seat
- L-shaped cushioned seating with covers and storage
- Hi/Lo table with stainless steel pedestal
- 4 x Blue Water Fiddleback captain's chairs
- Wet bar with sink
- Jacuzzi
- 3 x Fixed chaise lounges
- Entertainment system
- Liquid propane gas grill
- Sub-Zero refrigerator
- Scotsman bulk icemaker
- Fusion Marine MS-IP700i - AM/FM/VHF/USB/AUX/iPod/iPhone/SiriusXM
- JL Audio M-Series Speakers

Pilothouse

- Raised lounge with table
- Stidd 500XN power helm chair
- Chart flat
- Code flags
- Samsung 36" Smart HDTV with separate DTV receiver
- Fusion Marine MS-IP700i - AM/FM/VHF/USB/AUX/iPod/iPhone/SiriusXM

Aft Deck

- Swim Platform
- Large, varnished teak pedestal table
- Shower on aft deck
- 6 x Chairs and bench seating for up to 12 guests
- L-Shaped bar with 4 x barstools
- 4 x Blue Water Fiddleback captain's chairs
- Integrated buffet with solid surface and storage beneath
- Wet bar with inlaid teak bar top and solid surface back bar with sink
- Ice maker
- LG 42" HDTV (flip down behind bar)
- JL Audio M-Series Speakers
- Ample storage beneath the bar
- 2 x Sub-Zero under-counter refrigerator
- Whirlpool Gold bulk icemaker
- Denon AVRX 4000 Integrated Network 7-Channel Receiver
- Access to the swim platform both port and starboard

Audio and Visual Equipment

- Apple TV in each stateroom and Salon Apple Airplay throughout
- HD Smart TVs throughout the boat
- Blu-ray disk players with Wi-Fi throughout entire boat
- PlayStation 4

Engine and Mechanical Equipment

- Twin MTU 16V2000 Diesel engines at 1800hp each
- Engine Hours: Port 2,380 after W6, total hours 9,705; Starboard 2,216 after W6, total hours 9,641 (Jan 2024)
- Alfa Laval fuel transfer system
- MarineAir Systems 4-stage chilled water air conditioning unit rated at 288,000 BTU's
- Watermaker Inc. 1600 gallons per day
- Deep-sea dive air compressor

- Fire station with hose and nozzle
- Lube Oil Capacity: 296 gal
- Gray Water Capacity: 195 gal
- Black Water Capacity: 315 gal

Electrical System

- 2 x Kilopak generators, new 2007
- Generators rebuilt Oct 2015 at 10,500 hours
- Generator Hours: Port 20,598; Starboard 19,324 (Jan 2024)
- Electrical end of generators replaced in November 2022
- Atlas Shorepower system (accepts all power up to 480)
- 2 x Shorepower inlets
- Dockside phone/cable jack connection
- Main engine start battery charger, 60-amp 24V
- 2 x Generator start batteries, 24V
- 12V AC Electrical system
- 24V DC Electrical system

Communication and Navigation Equipment

Charges for data and cell use through the boat's Wi-Fi system will be charged to APA* Starlink Internet (RV Version).

Pilothouse

- Danforth Constellation Compass
- Elbex Camera switching unit
- 2 x ICOM VHF radios
- 2 x Brooks and Gatehouse 20/20 multifunction instruments
- Furuno NavNet radar
- 5 x Qvei monitors with black box technology - one screen is dedicated to towing
- Qvei monitor input selector screen
- Nav Computer with Nobletech and Tx Weather

- 2 x DDEC Digital engine displays
- Carlisle and Finch remote spotlight
- Kahlenberg whistle control
- Quantum bow thruster control
- Jastram rudder call indicator
- Jastram rudder angle indicator
- C-Plath gyro
- Electronic engine controls
- Sperry Marine Navipilot 4000 autopilot
- Joopnautic stabilizer fin control
- Furuno 96-mile Radar
- Icom single sideband radio
- Ship's personal computer
- Epson Eco Tank 3850 Printer/Fax/Copier/Scanner
- Jastram steering jog lever
- B&G Analog wind direction
- Jastram alarm panel
- 2 x Hull potential meters
- Furuno FA-150 Universal AIS

Flybridge

- Quantum bow thruster control
- Jastram steering mode selector
- 2 x ICOM command mic VHF remotes
- B&G Hydra 2000 LCD multifunction navigation aid
- 2 x DDEC displays
- Jastram rudder angle indicator
- Jastram rudder call indicator
- Main engine start/stop

- C-Plath Navipilot 4000 autopilot
- Danforth Constellation magnetic compass
- Furuno NavNet multifunction navigation aid, radar plotter, GPS, sounder and log
- Carlisle and Finch remote searchlight control
- Garmin 4208 GPS with maps

Wing Station Starboard

- Main engine ignition and controls
- Quantum bow thruster control
- Jastram follow-up steering
- Jastram rudder angle indicator

Bow

- Comfortable bench seating forward with pillows
- Side seating with cushions
- Oversized bunny pad on the bow forward

Safety and Fire Protection

- Handheld fire extinguishers in each cabin
- Personal floatation devices
- Smoke detectors
- Smoke hoods
- Flash indicator lights

Additional Equipment

- 2 x New 16-person Revere life rafts (port & starboard)
- Complete ACR rapid ditch abandon ship bag
- 35 x Adult US Coast Guard approved Type I PFD's
- 4 x Throw rings, 2 x with tethered strobes
- 8 x Immersion Suits

Tender

- 20' Brig Eagle 6 Rib Tender 2021

Recent Works

- Fresh bottom paint (Oct 2023)
- New Zincs (Oct 2023)
- Recent Insurance Survey (Oct 2023)
- New seawater intake pipes for both sea-chests and air conditioning (Oct 2023)

Audio Visual

- KVH TracVision HD7 Tri-Americas satellite dish
- HD TVs - throughout the boat
- HD DirecTV boxes - entire boat x 11 receivers
- Blu-ray disk players with Wi-Fi - entire boat
- Upgraded Camera System (July 2023)

Engine and Mechanical

- Watermakers rebuilt (July 2023)

Engineering

- 2019 Main engines completed W-6 overhaul
- Generators rebuilt at 10,500 hours
- Renewed main engine start batteries
- Replaced main electric hydraulic pump (2020)
- Replaced with new ~ both main engine driven hydraulic pressure pumps (2019)
- Rebuilt all hydraulic equipment for the stabilizer system (rams, solenoids, and hoses)
- Replaced ALL shipboard hydraulic hoses
- Replaced Hydraulic oil coolers

Electrical

- Replaced capacitors and resistors in Atlass Converter (2020)
- Updated lighting control to Crestron (2020)

Air Conditioning

- Complete renewal of chill water air conditioning system
- Replaced many air handlers throughout the boat & engine room
- Replaced both air conditioning seawater cooling pumps

Aft Deck

- Rebuilt crane (October 2023)
- Serviced main deck door (October 2023)
- Rebuilt passarelle (October 2023)

Disclaimer

The company offers the details of this vessel in good faith but cannot guarantee or warrant the accuracy of this information nor warrant the condition of the vessel. A buyer should instruct his agents, or his surveyors, to investigate such details as the buyer desires validated. This vessel is offered subject to prior sale, price change or withdrawal without notice.



Profile



Salon



Salon



Salon



Salon Bar



Dining Area



Dining Area



Day Head



Galley



Galley



Galley



Lower Foyer and Owner Stateroom Entrance



Owner Stateroom



Owner Stateroom



Owner Stateroom



Desk in Owner Stateroom



Her Ensuite



Steam Shower



His Ensuite



Port Guest Stateroom



Port Guest Ensuite



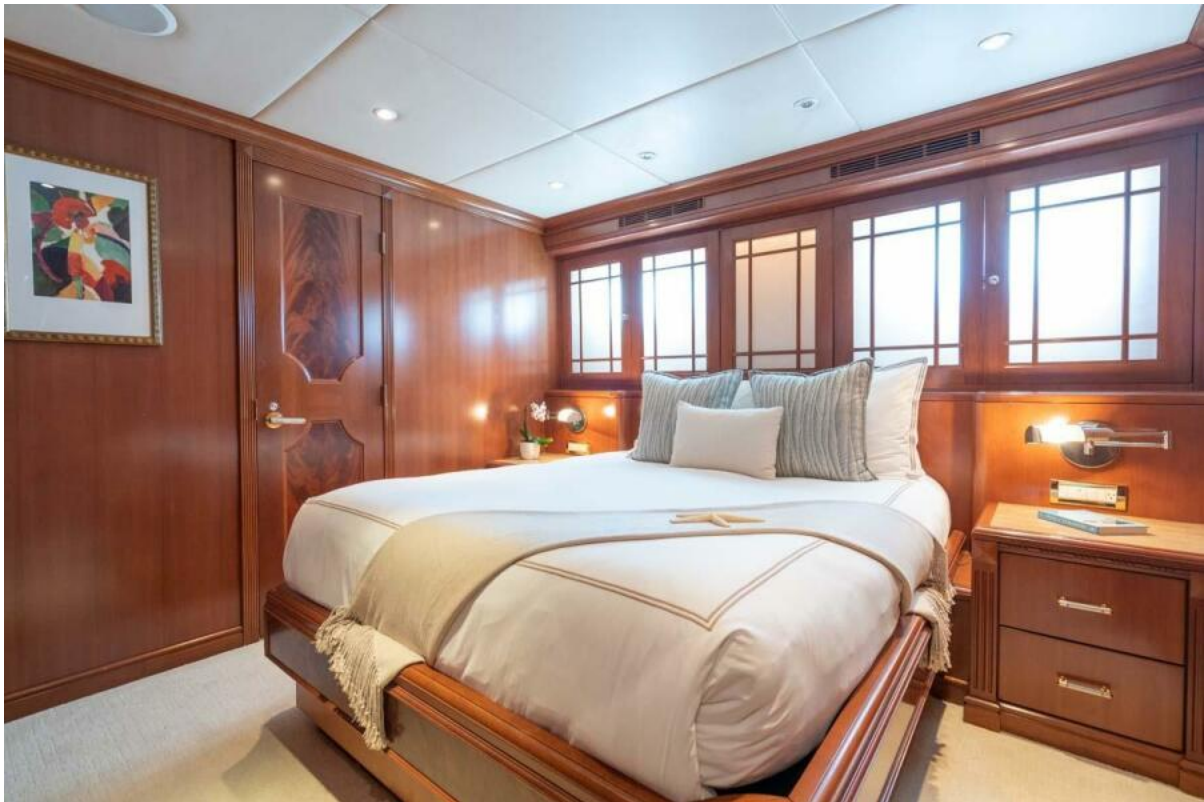
On Deck VIP Stateroom



On Deck VIP Stateroom



VIP Ensuite



Starboard Guest Stateroom



Starboard Guest Stateroom



Twin Guest Stateroom



Twin Guest Stateroom Showing Pullman



Twin Guest Ensuite



Guest Foyer



Pilothouse



Helm



Pilothouse



Flybridge



Flybridge



Flybridge Bar



Flybridge Dining



Jacuzzi



Aft Deck



Aft Deck



Aft Deck Bar



Aft Deck Bar



Control Room



Control Room



Engine Room



Engine Room



Starboard Stern Profile



Aerial Foredeck with Huge Bunny Pad



Starboard Bow Profile



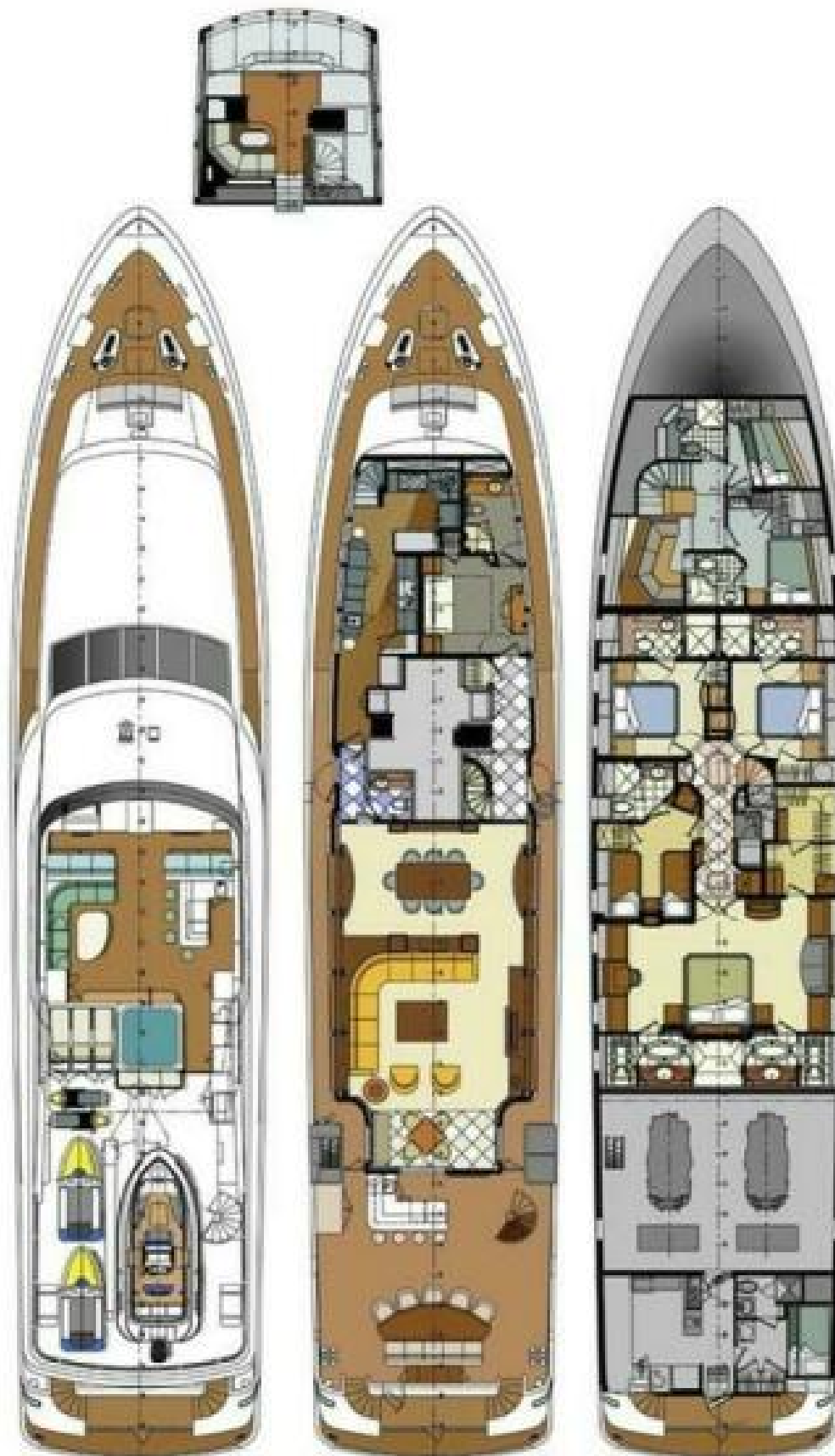
Starboard Profile



Port Profile



Aerial



Layout