



COPYRIGHT ©2026 CANTU DESIGN, DFD INC.

# SINDERELLA

167' (51.00m) 2026 Custom CANTU  
Fort Lauderdale Florida United States



## OVERVIEW

Manufacturer:	Custom		
Engines:		Hull Material:	Aluminum
Engine Model:		Cruise Speed:	12
Engine HP:		Max Speed:	18
Beam:	28' 10"	Cabins/Heads:	6 /
Max Draft:	7' 6"	Fuel Type:	Other
Water:		Fuel:	

Call for Price



## Data Sheet

Category: Superyacht  
Condition: New  
Model Year: 2026  
Beam: 28'10" (8.80m)  
Max Draft: 7' 6" (2.30m)  
LOA: 167' 3" (51.00m)  
Cabins: 6  
Sleeps: 12  
Full Beam Master: Yes  
On Deck Master: Yes

Crew Cabins: 5  
Captain's Quarters: Yes  
Crew Sleeps: 9  
Crew Mess: 1  
Elevator: Yes  
Helideck: Touch & Go  
Maximum Speed: 18 Cruise Speed: 12  
Range NM: 3500  
Fuel Type: Other  
Hull Material: Aluminum  
Hull Shape: Fast Displacement  
Concept Boat: Yes  
Air Conditioning: Yes

Gross Tonnage: 499  
Stabilizers: Standard and Zero Speed  
Bow Thruster: Yes  
Stern Thruster: Yes  
Classification: LR SSC, ✠ 100 A1 Yacht  
[LMC] G6 MCA LY (unlimited)  
Builder: Custom  
Designer: CANTU Design

## Engines/Generators

## Summary/Description

51m I 167' SINDERELLA - Sustainable Fast Displacement Superyacht

We are proud to present a new contemporary 51 meter fast displacement superyacht hybrid concept named *SINDERELLA*. The creative team of Cantu Design and DFD Inc. set out to produce a motoryacht that offers the very best of European and American design with an engineering package that can adapt to advance in battery and hydrogen cell technology. *Sinderella's* design is muscular and robust with a stylish plum bow, and reflective exterior.

The 51m I Tri-Deck motor yacht accommodates ten(10) to twelve (12) guests in unparalleled luxury and accommodates nine (9) crew. A touch and go helipad is located on the sundeck with a 10' Jacuzzi.

- Owners Suite - On Deck, Full Beam
- Captains Stateroom - Aft of Helm Station
- Tender Garage with Stylized Gull-Wing Doors (port and starboard)
- Foredeck Lounge with Sunken Seating and Sun Pads
- Beach Club with Nemo Room - Offering Unique Waterline Views
- Bridge Deck Captains Quarters with Office

As a custom new build, a level of flexibility can be achieved.

### Custom Options

- Elevator
- Gyro Stabilization
- Six (6) stateroom configuration
- Standard Diesel Propulsion from Caterpillar Power

### Preliminary Custom Specification

Please note that the **preliminary specifications** are being presented for reference and can be customized by the buyer, designer, and captain. We are listening.

## Key Features & Options

- All American Design Team
- Reflective Exterior Glass
- 499 GT - Achieved through tried and tested tonnage minimization methods adopted from the yachting and commercial shipping industries
- Upgradable Hybrid Power and Propulsion Package - Providing two to four 5hour pure electric - zero emissions or standard diesel propulsion (also available with standard diesel propulsion)
- Zero Speed Stabilization and Integrated Ride Control
- High Cruise Speeds
- Shallow Draft - Ideal for cruising the Bahamas
- Helipad, Touch and Go
- Elevator (option)
- Class Compliance: LR SSC, ⚡ 100 A1 Yacht [LMC] G6 MCA LY (unlimited)

## **Accommodations - OWNERS & GUESTS**

### MASTER SUITE

The Master Suite is located on the main deck, is full beam, and includes Private Office, His & Her Heads

#### Master Stateroom

- King Berth
- Nightstands
- Dresser
- Walk-in Closet
- Closet
- Flatscreen TV

#### Office

- Freestanding Desk
- Loose Chairs

#### His & Her Heads

- Showers
- Heads
- Vanities
- Mirrors
- Flooring

### GUEST SUITES

Guest Staterooms are located on the lower level and feature built in vanity's, night stands, wardrobes, depressors, and en-suite heads with walk-in shower.

Guest Heads

Port and Starboard Aft: Double Vanity, Toilet, Head, Walk-in Shower

Port and Starboard Forward: Vanity, Toilet, Head, Walk-in Shower

## **Accommodations - CREW**

### **CAPTAIN'S SUITE**

The captain's stateroom is located on the Bridge Deck aft of the helm and accessed through the Ships Office

- Berth
- Nightstand
- Wardrobe
- Desk

### **Captain's En-suite Head**

- Shower
- Toilet
- Vanity
- Mirror
- Flooring

### **CREW QUARTERS**

Crew Quarters are accessed through a port side door leading into the galley and downstairs, located forward on the lower deck sleeping eight in four staterooms each with a head and shower. A crew mess, galley, and laundry are located aft of the staterooms. A crew access door leads into one of the Guest Staterooms allowing for Housekeeping.

## **Main Salon**

- Curved Glass Entrance Door to Salon
- Large Port and Starboard Windows for Panoramic Views
- Loose Furniture
- Centerline Cabinet with Fflatscreen TV on Lift
- Day Head
- Open Spiral Staircase

## **Formal Dining**

Formal Dining is located forward in the main salon. Formal dining table and chairs can accommodate twelve. This optional layout replaces the seating area with card table.

## **Galley**

Located midship on the main deck. Port side door for crew access and provisioning. A stairway leads down to the crew quarters and up to the bridge deck.

- Cabinets
- Vent hood
- Sinks and Faucets
- Bar and Seating
- Appliances
- Oven
- Dishwasher
- Refrigerator
- Freezer
- Microwave

## Bridge Deck

### HELM / SKYBRIDGE

- Glass Bridge
- Captains Chair or Chairs
- Settee and Table

### SKYLOUNGE

- Bar with Stools
- Card Table
- Day Head
- Flatscreen TV

### AFT BRIDGE DECK

- Dining Table with seating

## Sundeck

- Jacuzzi
- Bar with stools
- Loose furniture
- Day head
- Helipad - Touch & Go

## Aft Deck & Beach Club

### AFT DECK LOUNGE

- Loose Furniture
- Bar with stools
- Builtin Sofa a seating to port and starboard aft with hi-low table
- Walk around side decks provide access to the galley as well as forward bow

### BEACH CLUB - Nemo Room

A fully enclosed, watertight space with three large windows that descend below the waterline offering breath-taking views of marine life. It is the ideal space to retreat to and escape hot days after enjoying time on the beach club, which is maximized thanks to fold-down platforms either side.

\*Transom converts to a beach club with fold down doors, deployable bar with stools and loose furniture. (this is shown in renderings but maybe clarified with a sentence). (Would be nice to have a flush deck davit and option for a tender/jet skis maybe)

### Beach Toy Storage

Storage of all resort equipment and water toys located adjacent to the Nemo Room

## Mechanical

### Toys & Tenders

#### Tender Garage

- Anchor Windlasses
- Gullwing style garage doors to both port and starboard
- Tender 5m & 6m

## Engine Room

At DFD Inc., we have taken a fresh approach to the engine room, considering the larger market beyond the traditional setup. We've noticed a significant gap in the 40m - 60m market when it comes to electric-powered azimuth drive solutions. While Volvo and Cummins systems are commonly used on smaller boats, and ABB, Kongsberg, Rolls-Royce, and Siemens dominate the market for big vessels, there is a clear opportunity for innovation.

With this in mind, we have carefully evaluated three power plant packages for *Sinderella*, aiming to meet the diverse needs of our clients. The first two options revolve around a diesel-electric package that utilizes four 500 to 750 kW diesel gensets. These gensets power Kongsberg electric azimuths, allowing for exceptional maneuverability and even transatlantic voyages. Our power plant management and fuel efficiency optimization protocols, inspired by modern cruise ships, ensure optimal performance.

One of the notable features of our diesel-electric package is the inclusion of an auxiliary battery bank system. This combination enables *Sinderella* to rely solely on electric, zero-emission propulsion for up to two hours. This not only enhances maneuverability but also grants access to restricted waters like the pristine Raja Ampat in Indonesia. Traditionally powered vessels are banned from sailing in such delicate areas, and we believe that the trend towards preserving these vulnerable ocean zones will continue to grow.

At DFD Inc., we strive to provide innovative solutions that not only meet the demands of our clients but also contribute to the conservation of our oceans. With our electric-powered azimuth drive solutions and the ability to operate in

restricted waters, we are paving the way for a more sustainable future in the marine industry.

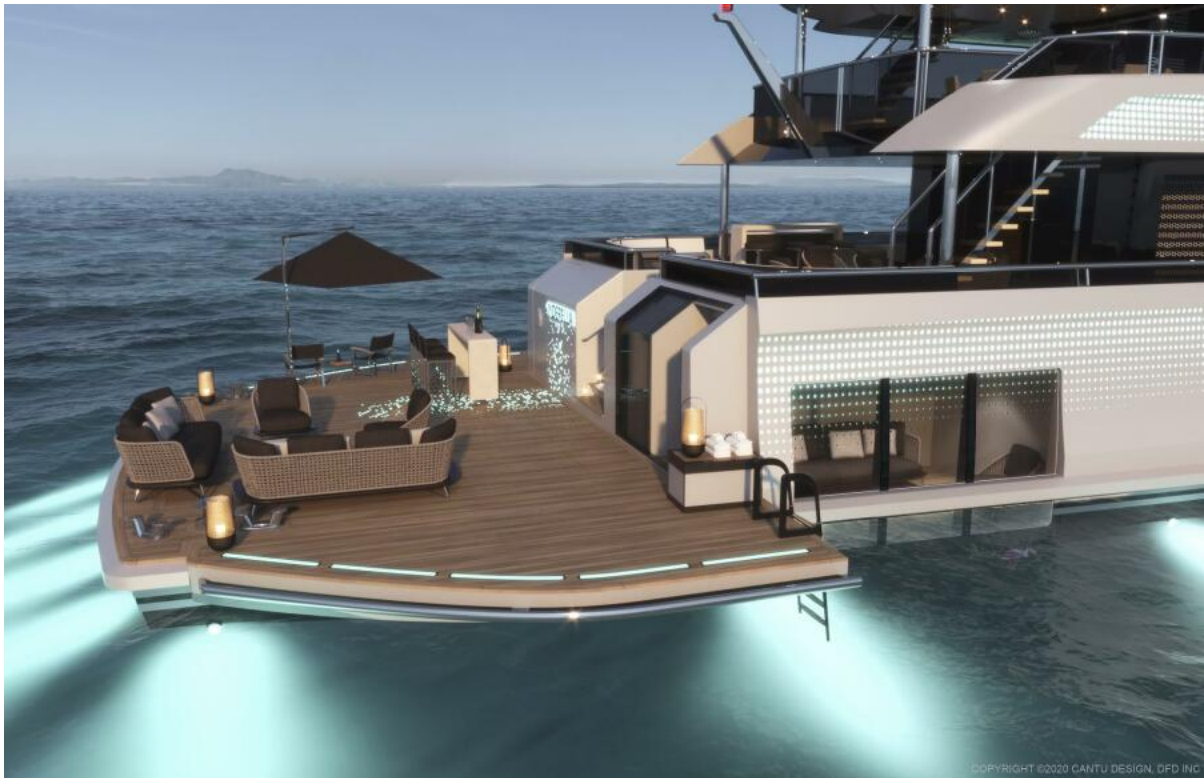




Profile



Plum Bow



Beach Club & Underwater Room



Glass Overhang





Reflective





