



Escape

58' (17.68m) 2020 Schaefer Flybridge
Jupiter Florida United States



OVERVIEW

\$1,195,000

Manufacturer:	Schaefer		
Engines:	2 Volvo Penta	Hull Material:	Fiberglass
Engine Model:	D11 - IPS	Cruise Speed:	
Engine HP:	725	Max Speed:	
Beam:	16' 3"	Cabins/Heads:	2 / 2
Max Draft:	4' 10"	Fuel Type:	Diesel
Water:	200 G (757.08 L)	Fuel:	555 G (2100.9 L)



Data Sheet

Category: Motor Yachts
Condition: Used
Model Year: 2020
Beam: 16'3" (4.95m)
Max Draft: 4' 10" (1.47m)
LOA: 58' (17.68m)
Cabins: 2
Heads: 2

Fuel Type: Diesel
Hull Material: Fiberglass

Fuel Tank: 555 gal (2100.9 liters)
Fresh Water: 200 gal (757.08 liters)

Engines/Generators

Engine 1

Volvo Penta
D11 - IPS
Inboard
725HP
540.63KW
Fuel: Diesel
Hours: 325

Engine 2

Volvo Penta
D11 - IPS
Inboard
725HP
540.63KW
Fuel: Diesel
Hours: 325

Summary/Description

Don't miss this great opportunity to own this beautiful, super low hour 2020 Schaefer 580. Escape is fully loaded with upgrades to include Volvo D11-IPS 950's, SeaKeeper 9, Bluewater watermaker and more

Don't miss this great opportunity to own this beautiful, super low hour 2020 Schaefer 580. Escape is fully loaded with upgrades to include Volvo D11-IPS 950's, SeaKeeper 9, Bluewater watermaker and more. Escape, 2020 Schaefer 580, has been meticulously maintained by her caring owners. All systems are serviced and up-to-date. Please call to schedule a private showing and inspect for yourself. You won't be disappointed you came and had a look.

Escape - 58' Schaefer

VESSEL HIGHLIGHTS

- Upgraded Volvo Penta D11 IPS-950 Only 325 hours
- Extended engine warranty through June 2024
- Engine service up-to-date
- SeaKeeper 9 with service up-to-date
- Custom crew, quarter conversion to build in closet in the master
- Hydraulic swim platform that includes 2020 Walker Bay Generation 340 Yacht Tender with Yamaha 40hp engine
- Yacht Controller

SALON

- Triple sliding door to access main cabin
- Twin, L-shaped leather wrapped sofas are situated across from one another.
- Forward facing built in leather, wrapped chair
- Wood finished folding hi/low table that converts port sofa into a birth
- Overhead LED lighting
- Bose stereo speakers for surround sound
- Blue accent lighting
- Solid ash colored laminate hard flooring.
- Large windows that let in ample light
- Samsung 50" flat panel television
- LG DVD video player
- Direct TV HD DVR receiver
- Fusion MS-RA70NSX Stereo
- Onan generator start stop

GALLEY

Escape is situated with up galley located aft of the main salon.

- Miele built in upright refrigerator with freezer below
- White Corian countertops with undermounted stainless steel sink
- Fisher & Paykel four burner surface mounted cooktop with sea rails
- Bosch Speed Oven, microwave/convection oven
- Vesta dishwasher

- Ample storage above and below
- Equipped with a full set of flatware, stemware, glasses, and coffee service.
- Dometic, HVAC control

LOWER HELM

- Leather Bentley stitched electric helm, chair.
- Control Volvo Penta, joystick and single lever controls and Volvo Penta LCD MFD also includes skyhook
- Twin Raymarine MFD displays
- Raymarine VHF radio
- Seakeeper LCD control
- Centerline Richie compass

PRIMARY CABIN

- Full beam primary
- Walk around centerline island queen berth
- Mirrored headboard
- Reading lamps
- Credenza to port
- Dressing mirror
- Ivation wine fridge
- Hanging locker to port
- Samsung flat panel television with drawers below
- Loveseat to starboard
- Large windows with privacy blinds, both port and starboard side
- Blue accent lighting
- Custom conversion from crews quarters to laundry center to include, custom eight drawer credenza, ONITY digital safe, LG washer/dryer combo, KVH TracVision and KVH Mini V SAT
- En-suite Head

PRIMARY HEAD

- Corian vanity with raised Deca porcelain bowl sink
- Mirrored medicine cabinet above with storage below
- TECMA toilet with bidet
- Glass hinged shower with port light and privacy blind

VIP CABIN

- Centerline island queen win storage below
- Mirrored headboard
- Reading lamps
- Access hatch an overhead
- Port and starboard windows with privacy blinds
- Storage above both port and starboard side
- Hanging locker to port
- Shelf storage to starboard
- Samsung flat panel TV with LG Blu-ray 3-D player
- En-suite access to head

VIP HEAD/GUEST HEAD

- Corian vanity with raised bowl Deca porcelain sink
- Mirrored medicine cabinet above in storage below
- Glass, hinged shower stall with port light and privacy blind
- TECMA toilet with bidet
- Towel rack
- Access from VIP or companionway

STARBOARD GUEST CABIN

- Twins, side-by-side births that convert into queen sized berth
- Hanging locker to starboard
- Reading lights
- Large window for natural light
- Samsung flat panel television with LG Blu-ray 3-D player

COMPANIONWAY

- Leather wrapped, stainless steel handrails leading down stairs
- Access to all guest accommodations
- Ships 240 VAC and 24 VDC ships panel will not blow little bit

FLYBRIDGE

- Teak steps leading up to the flybridge
- Acrylic door to keep weather out of aft deck
- U-shaped sofa to port with folding table
- Sun pads forward
- Molded, fiberglass top
- Teak sole
- Wet bar located aft with Isotherm ice machine
- Fusion stereo speakers

UPPER HELM

- Twin, MFD Raymarine displays
- Marine, VHF radio
- Volvo Penta, single lever controls, and joystick with Volvo Penta LCD display
- Centerline Ritchie compass
- Search light control

FOREDECK

- Forward facing sofa
- Pop-up LED lantern style lights and acrylics cup holders
- Forward lounge
- Wind shield in salon window screens
- 25KG stainless steel plow anchor with chain
- Quick windless
- Stainless steal bow rail

AFT DECK

- L- shaped aft sofa

- Twin teak cocktail tables that convert into dining table
- Teak sole
- Engine room access
- Wing joystick controls on starboard corner
- Fold down teak deck with handrails on starboard side to make cockpit even larger
- Battery disconnects
- Isotherm refrigerator
- Fusion stereo speakers in the overhead
- Fusion MS-NRX300 remoter
- Overhead lighting
- Access to foredeck either port or starboard side
- Sunshade that extends aft
- Access to hydraulic swim platform
- Wet bar in Kenyon Grill located on swim platform
- Sunshade to cover swim platform
- Bolson locker to Port
- Walker Bay tender, located on swim platform

TENDER

- 2020 Walker Bay Generation 340 12ft RIB
- Yamaha 40hp four stroke engine
- Garmin GPS
- Standard Horizon Explorer, VHF radio

ENGINE ROOM

- Twin Volvo Penta IPS 950's 725HP engines with approximately 325 hours
- Cummins Onan, 17 KW generator 424 hours
- Fuel Water separators
- Blue Water, watermaker
- Dometic Marine Air Chiller Units
- SeaKeeper 9
- Quick SBC 1950 24V 80Amp and 750 24x 30Amp battery chargers
- Fire Boy, manual/automatic fire, suppression system
- LED overhead lighting
- Glendening 50 amp cablemaster

DECK & HULL

- Grey hull with white topsides
- Black and white boot stripe
- Underwater lights
- Trim tabs
- Hydraulic swim platform
- Hydraulic side deck
- Stainless steel bowl rail
- Teak decks on entire exterior sole

Mechanical Disclaimer

Engine and generator hours are as of the date of the original listing and are a representation of what the listing broker is told by the owner and/or actual reading of the engine hour meters. The broker cannot guarantee the true hours. It is the responsibility of the purchaser and/or his agent to verify engine hours, warranties implied or otherwise and major overhauls as well as all other representations noted on the listing brochure.

Disclaimer

The company offers the details of this vessel in good faith but cannot guarantee or warrant the accuracy of this information nor warrant the condition of the vessel. A buyer should instruct his agents, or his surveyors, to investigate such details as the buyer desires validated. This vessel is offered subject to prior sale, price change or withdrawal without notice.



Escape



Salon



Salon



Salon



Salon



Salon



Salon



Galley



Galley



Galley



Helm



Helm



Master Stateroom



Master Stateroom



Master Stateroom



Master Stateroom Head



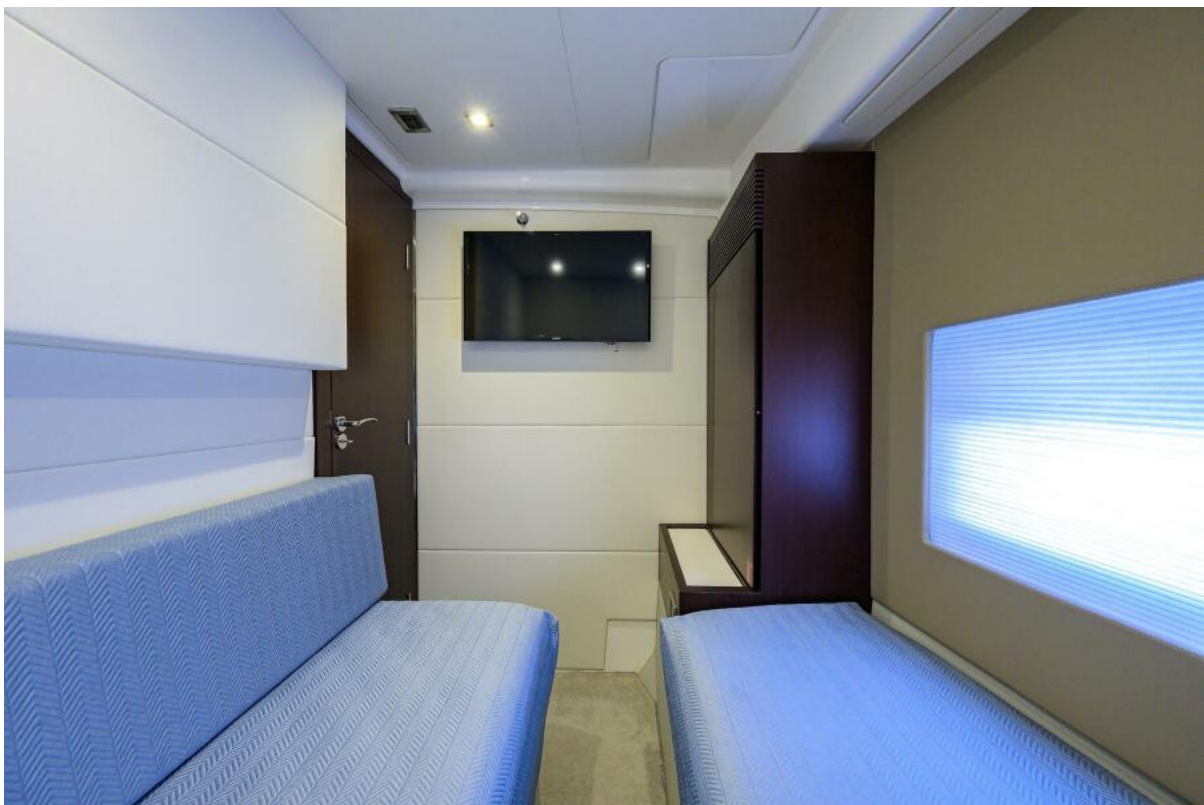
Forward Stateroom



Forward Stateroom



Guest Stateroom



Guest Stateroom



Guest Head



Laundry



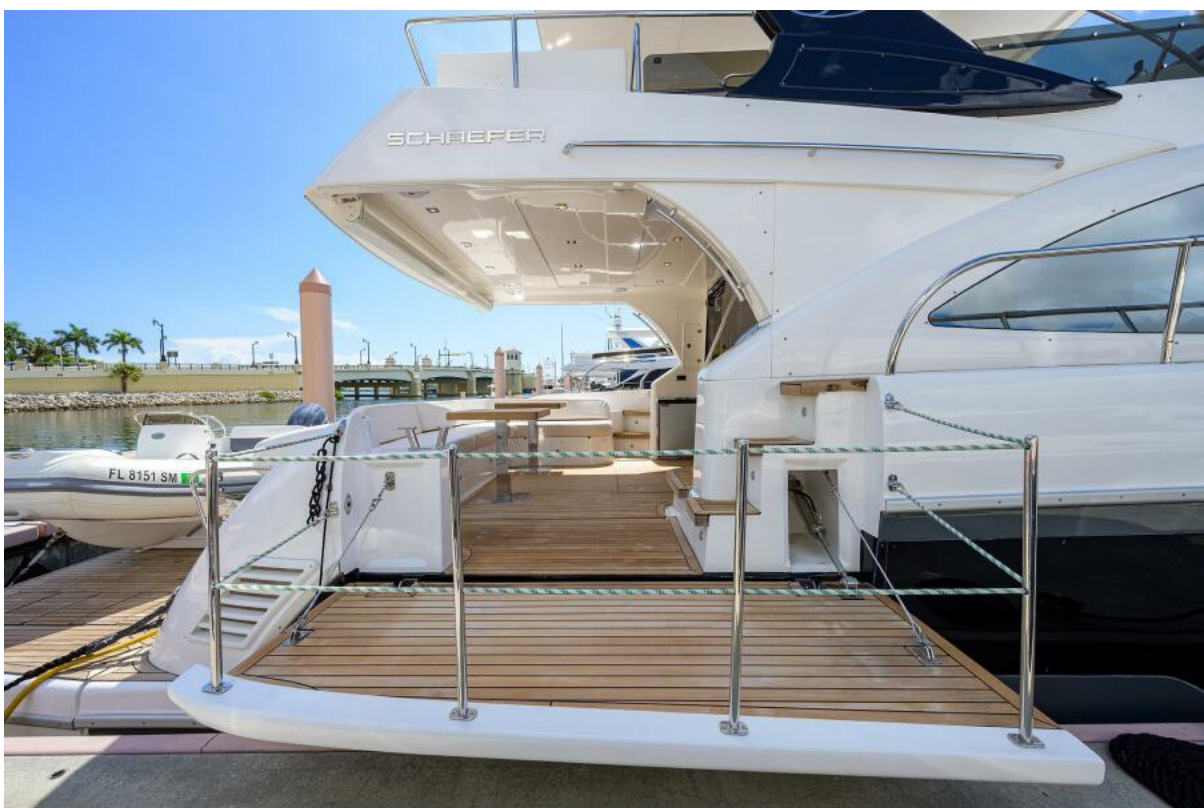
Aft Deck



Aft Deck



Aft Deck



Aft Deck



Aft Deck



Bow



Bow



Bow



Flybridge



Flybridge



Flybridge



Flybridge



Flybridge



Flybridge



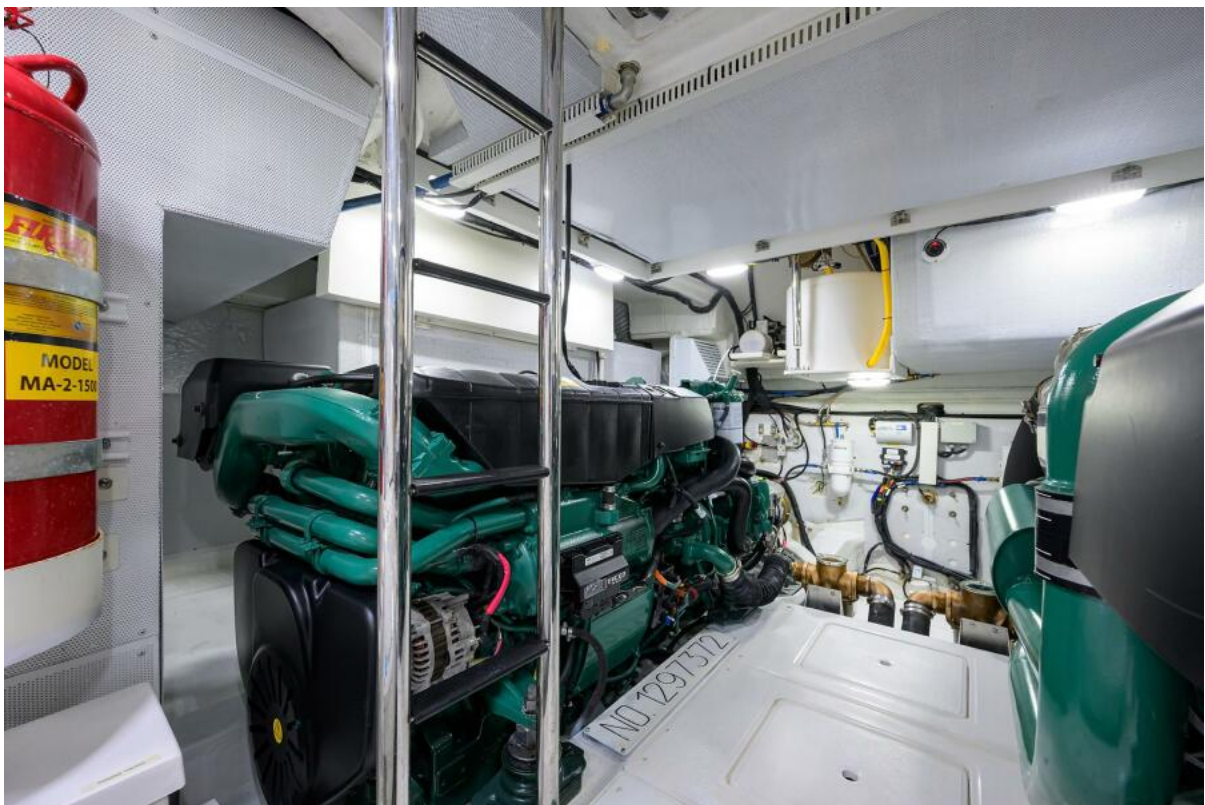
Flybridge



Engine Room



Engine Room



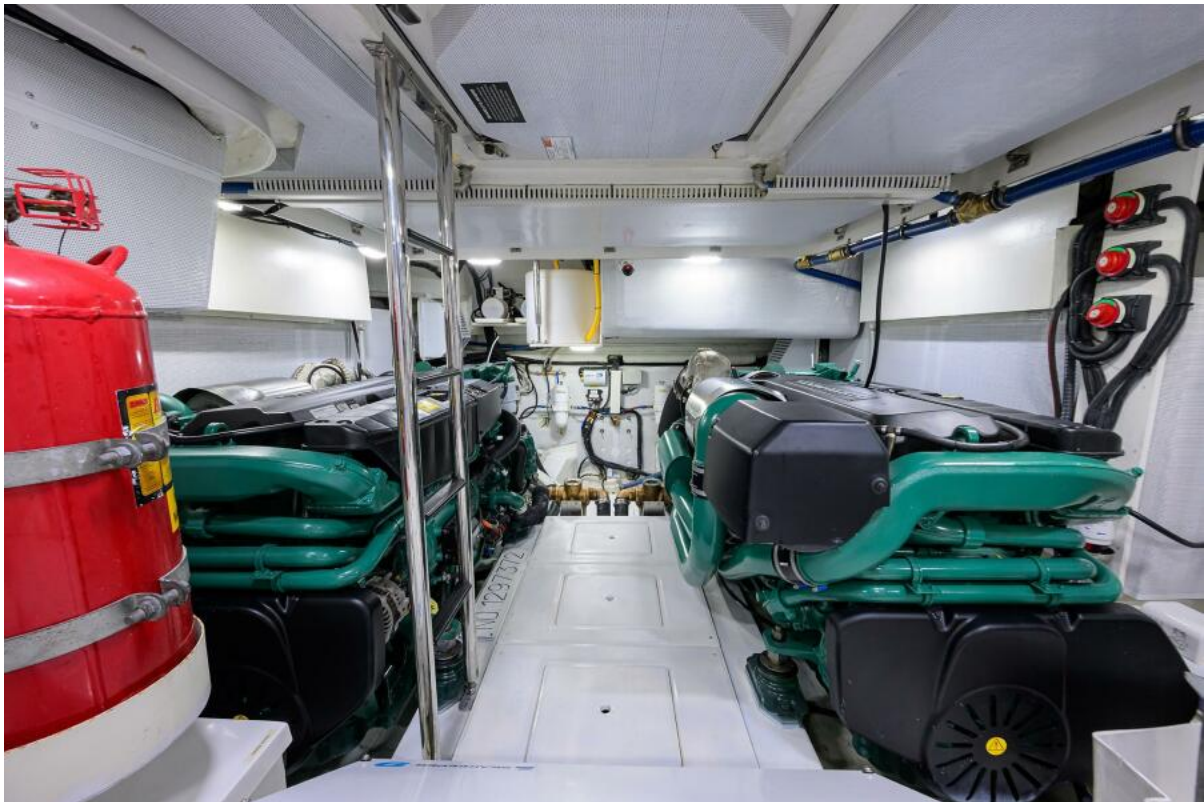
Engine Room



Engine Room



Engine Room



Engine Room



Escape



Escape



Escape



Escape



Escape



Escape



Escape



Escape