



40' (12.19m) 1996 Island Packet 40
Kemah Texas United States



OVERVIEW

\$115,000

Manufacturer: *Island Packet*
Engines: 1 Yanmar
Engine Model:
Engine HP: 54
Beam: 12' 11"
Max Draft: 4' 8"
Water: 170 G (643.52 L)

Hull Material: Fiberglass
Cruise Speed: Knots
Max Speed: Knots
Cabins/Heads: 2 / 2
Fuel Type: Diesel
Fuel: 65 G (246.05 L)



Data Sheet

Category: Cruisers	Knots	Displacement: 22800 Fuel Tank: 65 gal
Subcategory: Cutter	Knots	(246.05 liters)
Condition: Used	Fuel Type: Diesel	Fresh Water: 170 gal (643.52 liters)
Model Year: 1996	Hull Material: Fiberglass	Imported: No
Beam: 12'11" (3.94m)		Builder: Traditional Watercraft
Max Draft: 4' 8" (1.42m)		Designer: Bob Johnson N.A.
Min Draft: 4' 8" (1.42m)		HIN/IMO: TDLUS069A696
LOA: 41' 6" (12.65m)		
LWL: 34' (10.36m)		
Cabins: 2		
Sleeps: 7		
Convertibles: 1		
Pullmans: 1		
Double Berths: 1		
Queen Berths: 1		
Heads: 2		

Engines/Generators

Engine 1

Yanmar
54HP
40.27KW
Hours: 350
Hours Date: 05-11-2023
Year: 2015

Summary/Description

The Island Packet 40 is a luxurious and well-designed sailboat, renowned for its excellent craftsmanship, spacious interior, and excellent seaworthiness. This yacht has a length overall of 41 feet and 6 inches, with a beam of 12 feet and 11 inches, and a draft of 4 feet and 7 inches.

The Island Packet 40 is a luxurious and well-designed sailboat, renowned for its excellent craftsmanship, spacious interior, and excellent seaworthiness. This yacht has a length overall of 41 feet and 6 inches, with a beam of 12 feet and 11 inches, and a draft of 4 feet and 8 inches.

The Island Packet 40 has a traditional design, with a full keel and cutter rig, which provides excellent stability and handling in all conditions. The hull is constructed of hand-laminated fiberglass, making it extremely strong and durable. The deck and cockpit are also made of fiberglass and are designed for easy maintenance and durability.

Inside, the Island Packet 40 is spacious and comfortable, with a large salon, two private cabins, and two heads. The salon features a U-shaped settee and a large dining table, which can be converted into a double berth for guests. The galley is located aft of the salon and is well-equipped with a three-burner propane stove, oven, refrigerator / freezer and double stainless steel sinks.

The master cabin is located forward and features a pullman berth, hanging lockers, and ample storage. The en-suite head has a separate shower seat and plenty of space. The aft cabin has a double berth and a private entrance to the second head.

The Island Packet 40 is equipped with a range of high-quality sailing gear, including a roller furling system for the genoa and staysail, and a hydraulic autopilot for easy and comfortable sailing. The cockpit is spacious and well-protected, with a dodger, bimini and full enclosure providing shade and shelter from the sun and rain.

Overall, the Island Packet 40 is a beautifully designed and well-built sailboat, ideal for long-range cruising and comfortable living aboard. It is a popular choice among sailors who appreciate quality, comfort, and performance.

Accommodations

DESCRIPTION

The Island Packet 40 is a cutter rigged full keel cruiser with a keel stepped mast. Vesper has been **repowered with a 54 hp Yanmar in 2015. Chainplates were replaced in 2019 by Mack Sails**. Her interior features two double staterooms each with private heads. With a large galley and nav station she will be a great liveaboard or cruising yacht.

ACCOMMODATIONS

- Layout:

Head forward with pullman berth to starboard and dressing bench / storage to port makes the forward guest cabin. The saloon features the standard Island Packet fold up table to allow for a large open area unless the table is down. The large aft facing nav station is to starboard with the galley aft and the main head across to port. The aft cabin has a private entrance to the main head.

- 13 Stainless Steel opening ports
- 5 Opening hatches (all crazed)
- 5 Fans
- Teak and Holly cabin sole in poor condition
- Aft Facing Nav Station
- Dinette table folds to bulkhead
- Cushions are fabric covered and in good conditon
- Master Cabin forward with Pullman berth, large hanging locker, drawers, cubbies and shelves as well as 2 fans, 3 ports, one overhead hatch and reading lights.
- Two heads with manual Jabsco heads
- Guest Cabin aft with double berth, reading lights, one fan, 2 opening ports, hanging locker, cubbies and shelf. This cabin also has private access to the aft head.

The galley features a Princess 3-burner stainless steel stove and oven as well as a large top loading fridge/freezer, a Willz microwave and double stainless steel sinks.

The asking price accounts for the following systems that are inoperable or in need of attention:

- Fuel tank has some corrosion
- Water tank has a leak
- small gouge in mast below the cabin sole



Forward Head



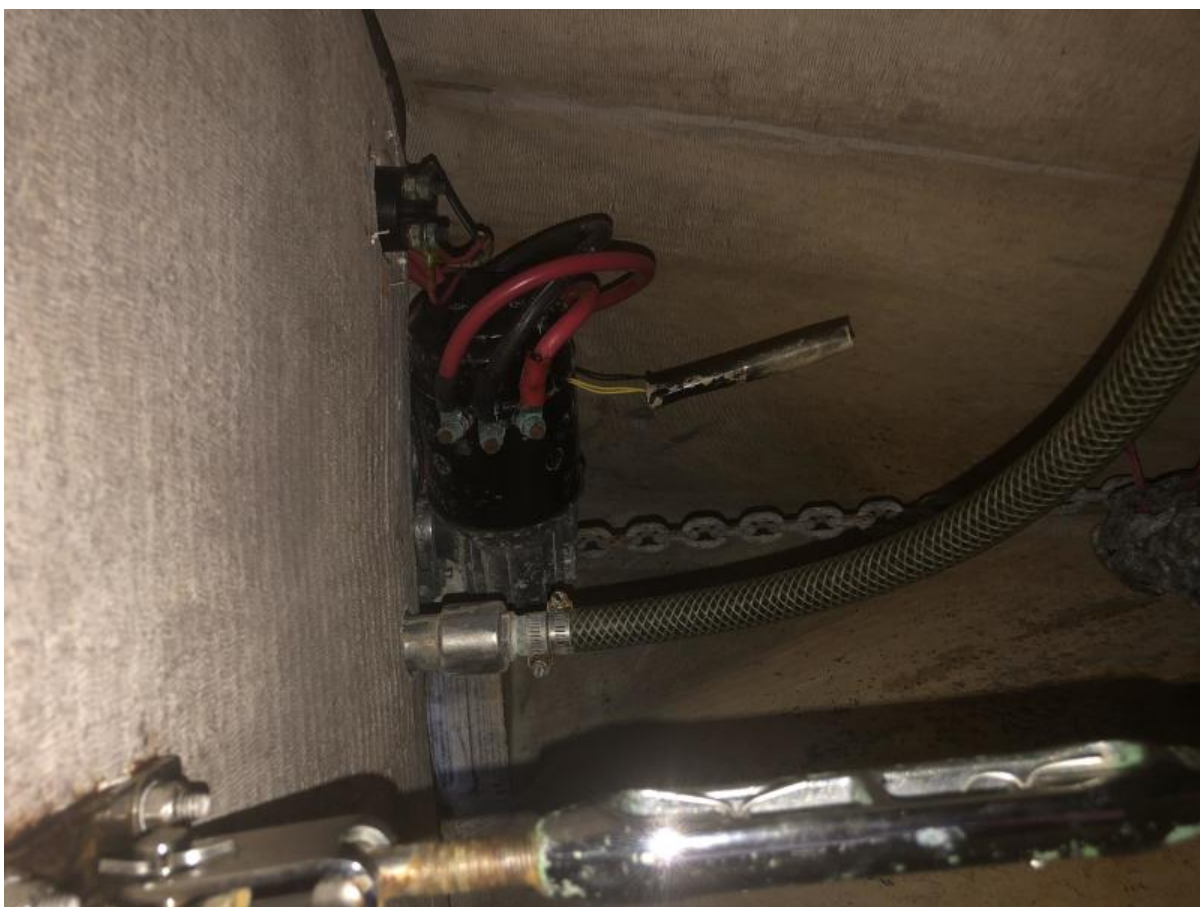
Forward head sink



Forward head shower



Chain Locker



Windlass from below



Forward cabin pullman berth



Looking aft from forward head



Forward cabin bilge access



Forward cabin storage



Port settee



Galley



Double Sinks



Microwave



Princess stove/oven



Top of Fridge/freezer



Fridge



Tableware Storage



Below port settee storage



Behind port settee storage



Aft Cabin storage



Aft berth



Aft head



Aft head