



68' (20.73m) 2021 Fountaine Pajot Alegria 67
Virgin Islands (US)



OVERVIEW

\$2,950,000

Manufacturer:	Fountaine Pajot		
Engines:	2 Volvo	Hull Material:	Fiberglass
Engine Model:	D3	Cruise Speed:	Knots
Engine HP:	150	Max Speed:	Knots
Beam:	32' 4"	Cabins/Heads:	4 / 6
Max Draft:	5' 7"	Fuel Type:	Diesel
Water:	277 G (1048.56 L)	Fuel:	370 G (1400.6 L)



Data Sheet

Category: Catamaran
Subcategory: Multi-Hulls
Condition: Used
Model Year: 2021
Beam: 32'4" (9.86m)
Max Draft: 5' 7" (1.70m)
(0.00m)
LOA: 68' 10" (20.98m)
LWL: 63' 5" (19.33m)
Cabins: 4
Sleeps: 12
Double Berths: 1
Queen Berths: 2
King Berths: 1
Heads: 6

Crew Cabins: 2
Captain's Quarters: Yes
Crew Sleeps: 4
Knots
Knots
Fuel Type: Diesel
Hull Material: Fiberglass
Hull Shape: Catamaran
Hull Finish: White
Air Conditioning: Yes
Bridge Clearance: 98' 3"
Max Passengers: 30

Displacement: 46600 kilos
Fuel Tank: 370 gal (1400.6 liters)
Fresh Water: 277 gal (1048.56 liters)
Holding Tank: 92 gal (348.26 liters)
Imported: No
Builder: Fountaine Pajot
Designer: Berret Racoupeau
In Stock: Yes

Engines/Generators

Engine 1

Volvo
D3
Inboard
150HP
111.86KW
Fuel: Diesel
Year: 2021
Location: Port

Engine 2

Volvo
D3
Inboard
150HP
111.86KW
Fuel: Electric
Year: 2021
Location: Starboard

Generator 1

Ask for more details

Summary/Description

2021 FP 67 Alegria 67 Owners Version Galley Down Available NOW! Excellent Condition NEVER CHARTERED BEST-IN-CLASS

PRICE REDUCED BY \$500,000! SELLER MOTIVATED!

2021 FP 67, Alegria 67, Owners Version Galley Down

Available NOW!

Excellent Condition, NEVER CHARTERED, Cruise Ready!

She boasts over \$600k in custom factory upgrades which makes her BEST-IN-CLASS!

MORE PHOTOS & VIDEOS AVAILABLE UPON REQUEST

A luxury catamaran to widen your perspectives, to heighten your emotion and to share what truly moves you. Alegria, like joy.

The joy of living by the sea aboard a luxury residence, the joy of enjoying a huge 37 m2 flybridge, a 39 m2 lounge and its sun bed, the joy of lying on one of the sofas or perhaps one of the countless sunbaths nestled on the boat, the joy of feeling the wind on your skin or vibrating at the majestic maneuvers of the Alegria 67. This catamaran yacht, equipped with a Performance rig, transports you from sensation to emotion to become the source of unforgettable memories. The spirit flies away like a terrace overlooking the sea, takes its ease in the private lounges or has fun in mischievous games on its beach club.

A style that reflects the latest trends?.

Aesthetics is the harmony between the inside and the outside, your feeling of serenity and the comfort of the boat's volumes. The elegance of the lines is like a welcome reserved for you, a call to feel good, an invitation to relax. Recharge your batteries by escaping as far as the horizon, from the square that offers you a 360-degree view. The style, transparency and lightness of the Alegria 67 make navigation an immaterial experience that encourages emotions to flourish.

The Owner's version on this Alegria 67 has an exceptional suite of 22 m2 in the starboard side, with direct access to the front saloon and sun beds. With the kitchen designed in the passageway, the saloon is fully dedicated to dining or relaxation.

On this Alegria 67, chefs enjoy the full kitchen version (Galley Down) found in the port-side with a corridor to the aft port 2 bed stateroom with it's own aft hatch.

The Alegria 67 kitchen version will provide owners and guests the experience of unforgettable culinary moments: the flavor of the dishes combined with that of the tasting of exquisite wines can be discovered during a stopover, refreshments, cocktails with friends before leaving for dinner on land? You surrender yourself to the treasures of Domains discovered at the bend of a stopover on land, and enjoy a bouquet of flavors magnified by the sea.

Yacht Details

Rigging/Deck

- Fridge 65 L on the flying bridge
- 2000 Watt electrical windlass
- Pressurized seawater system
- Outdoor cushions (Cockpit + lounge deck)
- Interior courtesy lighting
- Lazy jack
- Genoa electrical furler
- Exterior courtesy lighting
- VHF mast head antenna prewired
- CST mainsail full batten
- 2 Genoa electric winches
- Kitchen furniture on fly bridge
- Mooring kit + 6 fenders
- Additional electric fresh water pump
- 1 electrical winch for main halyard
- Hot/cold water on 1 deck shower
- Two pulpit seats
- Charger/inverter 5000W / 120 A
- Dralon protective cover for wheel
- Curtains in cabins
- 110 V malts gold
- Solar panels x 3 @ 173 W
- Multi amp monitor 7 **
- 1 Main sheet electric winch

More Yacht Details

Custom options additions

Description

- 3 Extra Outlets in Galley
- Aft Cabin Vertical handrails Port and Stb Cabins
- Coach Roof Handrails 3 x 2M Per side Total of 6
- Convert Day Head to Wine Cooler and Shelving
- TV in owners cabin
- Custom Side Boarding Ladders

- Flybridge Access Rails (2) .5 M
- Flybridge Manual lifting & folding cocktail Diner Table
- Flybridge Roll up Sunscreen Aft
- Ice-maker on Flybridge
- Master Cabin Access Rail. Flat Handrail 1M
- Motor Yacht Hardtop
- Plexiglass Wind Screen Along Forward area in front of helms
- Separate Washer/Dryer in Port Hallway Inboard Locker
- Painted Mast and Boom
- Stainless Steel Dolphin Seats
- Transom Extensions W 2 Swim Ladders
- Transom Handrail 2 Long and 2 Short 8 Total
- Widen Helm Back Seats

Even More Yacht Details

Electronic

- Aft facing camera for Garmin plotter (Helps Docking Cats)
- Entertainment
- Bow Speakers, Amp, Speakers mounted under Forward Eyebrow
- Audio & Video pack (TV on lift)
- Flying Bridge Hifi + 4 speakers

Galley

- Convert factory butane system to US spec propane
- 12V Cabin Fan - Caframo Sirocco
- Safety
- Carbon Monoxide detector (each)

Disclaimer

The company offers the details of this vessel in good faith but cannot guarantee or warrant the accuracy of this information nor warrant the condition of the vessel. A buyer should instruct his agents, or his surveyors, to investigate such details as the buyer desires validated. This vessel is offered subject to prior sale, price change or withdrawal without notice.



2021 FP Alegria 67 Available Now for immediate delivery



2021 Alegria 67 Owner's Galley Down Version



A shining beacon at anchor!



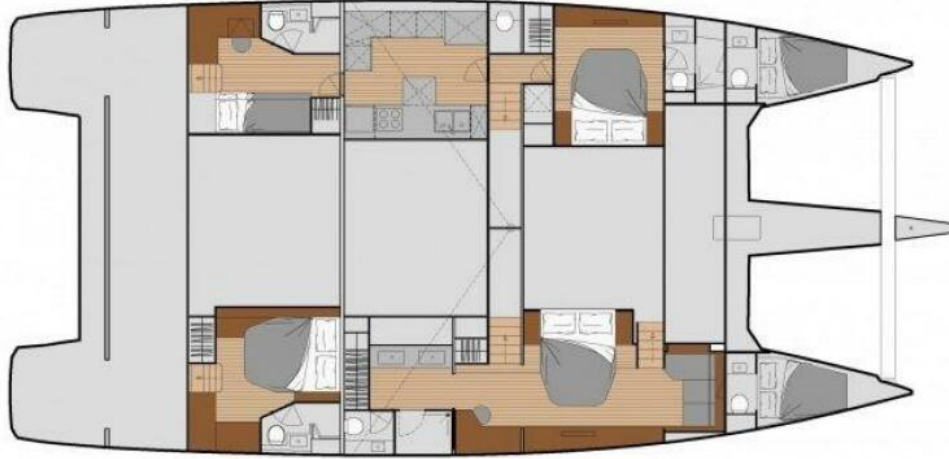
Custom Hardtop Canoe Boom & Asymmetrical Spinnaker viewed through the custom Hardtop Bimini Retractable Awning



2021 FP Alegria 67 Available Now for immediate delivery



Forward Cockpit Sunbed instead of Jacuzzi



2021 Alegria 67 Owner's Galley Down Version



2021 Alegria 67 Owner's Galley Down Version



2021 Alegria 67 Owner's Galley Down Version



Asymmetric Spinnaker



Wide Beam Flush Deck Hatches



Galley Down Maximizes Living Space



Galley Down Maximizes Living Space



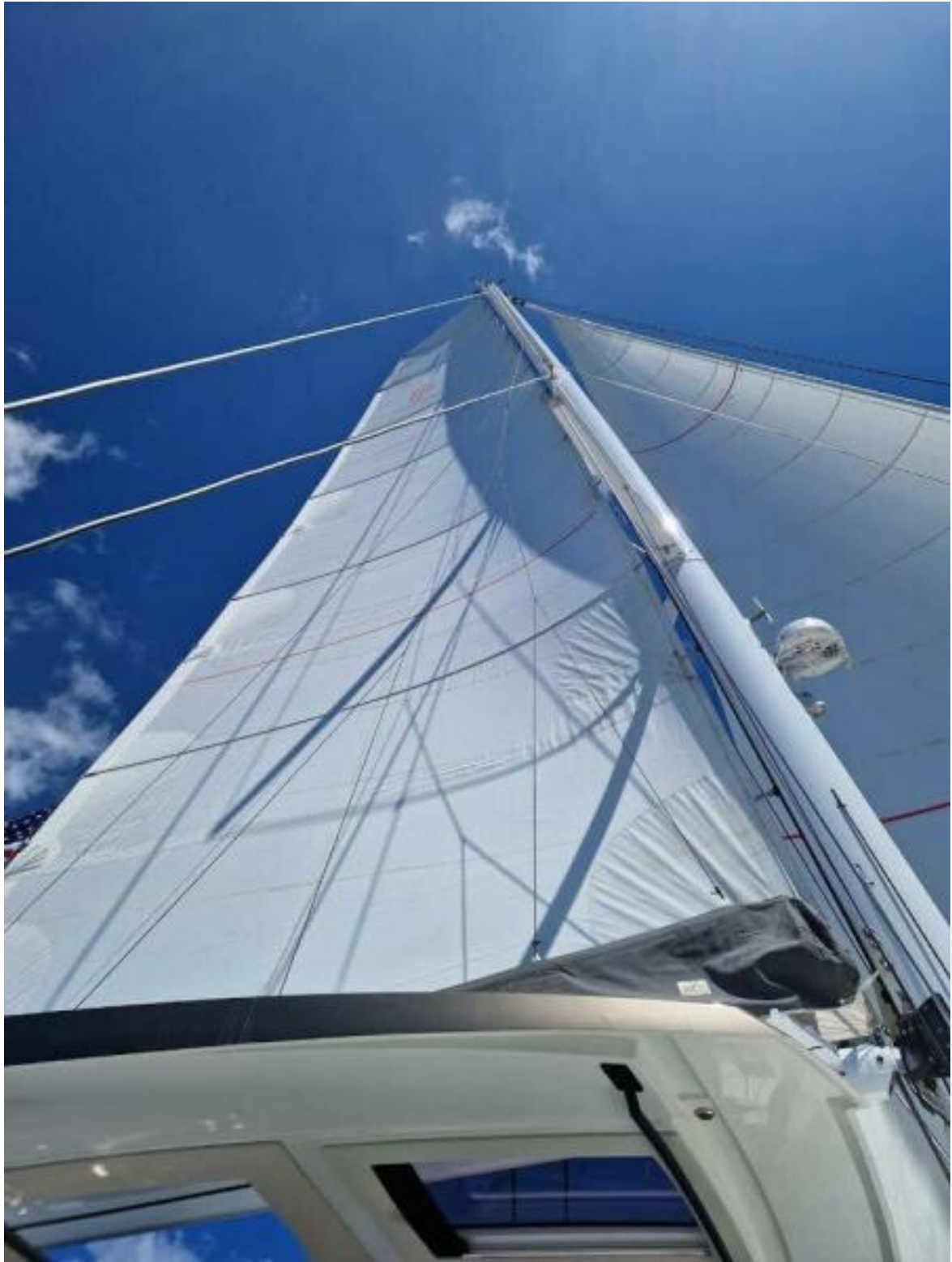
Pass Thru Water tight Bulkhead Door



Master Bathroom gives you amazing space!



Swim Platform Aft Swim Platform



Main & Genoa



Night Stern View Night Stern View



Mast & Hardtop Bimini at night Mast & Hardtop Bimini at night





Manuf. Provided Photo



Manuf. Provided Photo



Manuf. Provided Photo



Manuf. Provided Photo



Manuf. Provided Photo



Manuf. Provided Photo



Manuf. Provided Photo



Manuf. Provided Photo



Manuf. Provided Photo