



Carbon Fiber Luxury Catamaran



75' (22.86m) 2024 McConaghy Boats
Fort Lauderdale Florida United States

OVERVIEW

\$6,700,000

Manufacturer:	McConaghy Boats	Hull Material:	Composite
Engines:	2 Yanmar	Cruise Speed:	
Engine Model:		Max Speed:	28
Engine HP:	150	Cabins/Heads:	5 / 6
Beam:	32' 2"	Fuel Type:	Diesel
Max Draft:	14' 8"	Fuel:	1584 G (5996.09 L)
Water:	317 G (1199.97 L)		



Data Sheet

Category: Catamaran
Condition: New
Model Year: 2024
Beam: 32'2" (9.80m)
Max Draft: 14' 8" (4.47m)
Min Draft: 5' 5" (1.65m)
LOA: 75' (22.86m)
Cabins: 5
Double Berths: 5
Heads: 6

Maximum Speed: 28 Range NM: 1500
Fuel Type: Diesel
Hull Material: Composite

Fuel Tank: 1584 gal (5996.09 liters)
Fresh Water: 317 gal (1199.97 liters)
Builder: McConaghy Boats
Designer: Ker Yacht Design
HIN/IMO: SpecOrderTBD
Stock #: B90769

Engines/Generators

Engine 1

Yanmar
Inboard
150HP
Fuel: Diesel
Year: 2023
Location: Port

Engine 2

Yanmar
Inboard
150HP
Fuel: Diesel
Year: 2023
Location: Starboard

Summary/Description

"Quality, Custom-Builds & Lightweight, this is McConaghy." McConaghy is proud to now introduce an entire line of Cruising Multihulls. Drawing on their 50 years' of yacht building excellence, and reputation for creating some of the world's best performing race boats.

Their continual innovation and investment in new materials and technologies, has allowed us to firmly establish our position at the forefront of progressive high-performance and now also luxurious yacht building.

Each vessel in their new Cruising Multihull line will feature clean lines, apartment-style living and an open and modern dynamic that simultaneously enables comfortable cruising and better performance.

The McConaghy Multihull range is designed with the performance cruiser in mind. Whether you're an experienced multihull sailor or new to the genre, whether you seek bluewater adventures or coastal cruising with friends and family, these innovative multihulls offer impressive sailing performance in a stylish and luxurious package.

The MC75 stands uniquely apart from the rest of the multihull range. The flagship of the McConaghy Multihulls portfolio, the MC75 feels like a pocket superyacht like no other with her identifiable exterior lines, and key performance attributes. Detail and innovative space solutions allow living areas to be maximized. With the interior volume increased again the massive open saloon is free of bulkheads and partitions and is almost twice the size of those found on 100ft power boats.

The MC75's flybridge has also benefited from an increase in space, with this enormous area now offering a dual helm station at the front of this elevated sailing position allowing for clear sightlines forward. Powerful yet manageable, the MC75 will be exhilarating to sail with impressive capabilities for spending long periods at sea and offer an efficiency far superior to other comparable multihulls.

The MC75 is able to offer a three, four or even five cabin layout, all en suite, as well as separate quarters for a live-aboard crew.

Contact us for information on other models including:

- MC52, MC62, MC63p, MC68, MC75, MC82p, MC86 and MC100

Equipment & Options Configured to \$6.7M USD

McConaghy MC75 - Specifications Pricing and Options as Configured 5-2022

Centerboards

- Composite centerboards featuring push-button deployment with three pre- set positions. Flush with hull when retracted.

Longeron

- Carbon composite Longeron with integrated anchoring system

Exterior Finish

- Hull painted in high quality two pack polyurethane coating in solid light color, non-metallic
- Synthetic teak on aft cockpit, side decks, fwd cockpit and flybridge

Aft Main Deck

- Tempered safety glass sliding doors between saloon and aft deck
- Clear Carbon off center stair and handrail to fly bridge with illuminated steps on stbd aft side deck

Saloon to Starboard

- Electric sliding main saloon windows with safety locks

Forward Navigation Station

- Clear carbon navigation and electronics panel

Port Side Dining Area

- Electric sliding main saloon windows with safety locks

FWD Cockpit

- Twin opening doors to saloon
- Port & Stbd sunbeds
- Stairs to foredeck
- Small cushions or sunbed on centerline

Flybridge & Helm Stations

- Twin helm stations, layout to suit Owner's Nav/Electronics selections, fixed helm seats
- Twin McConaghy carbon fiber steering wheels, choice of styles

Engine & Machinery

- Two (2) 150hp Yanmar engines with V drives gearbox, propellers
- Twin electronic throttle controls
- Insulation in Engine rooms
- Two (2) Fuel tanks in total approx. 2600L
- Two (2) Racor #75.500FGX dual fuel filters
- Two (2) day tanks in total approx. 400L, includes fuel transfer pump, fuel polisher
- Two (2) Fuel Level Sensors

Generator, Air Con

- Generator 27kW Onan
- 220k BTU Air conditioning (reverse cycle Heat/Cool)

Hydraulic System

- Hydraulic Pump DC
- Hydraulic Pump PTO
- Valve block for centerboards
- Valve block for windlass
- Valve block for thruster

- Valve block for headsail furler
- Valve block for staysail furler
- Valve block for A sail furler

Solid State Computer

- One (1) Solid State Computer for Czone

Integral System

- One (1) Integrel Alternator Charge System

Navigation Supply

- One (1) Custom Navigation Panel

Engine / Generator Start Battery

- Four (4) Engine MasterVolt AGM 12/130Ah Battery
- One (1) Generator MasterVolt AGM 12/130Ah Battery
- Three (3) Easy Charger

AC Control

- One (1) Custom ACMI Main Switchboard
- Four (4) Custom ACOI AC Subboard
- One (1) Czone Touch 10" Display

Combi Inverters

- Five (5) MasterVolt Mass Combi Ultra 48/3500-50 inverter chargers
- Autotransformer 120/240VAC-100A

Shore Power Input

- Two (2) Shore Inlet Box
- One (1) Isolation Transformer

Entertainment

- Fusion entertainment system – Four (4) speakers

Rudder and Steering

- Balanced spade twin rudders

Bow Thruster

- Lewmar Hydraulic Bow thruster 300VRTTH 30CC 450 Stroke

Deck Equipment

- Nine (9) x Harken 48V Performa Electric: 4 x 80.3STEP, 3 x 70.3STEP, 2 x 50.2STE
- One (1) hydraulic forestay furler, One(1) hydraulic Code Zero furler & One (1) hydraulic staysail furler

Anchoring & Mooring

- One (1) 80kg Lewmar anchor, 100m chain (galvanised) and 30m warp
- Eight (8) x folding cleats

Misc Deck Hardware

- McConaghy clear carbon composite stanchions
- Clear carbon recessed coachroof handrails port & starboard

Hall Spars Rig

- Hall Spars-Hybrid high+Standard modulus Carbon mast and Boom, ultra- wide racks, standing rigging.
- Ex factory Hall Spars, commissioning excluded.

As-Option Equipment Included below:

Interior / Exterior Loose Parts

- Eighteen (18) Interior/Exterior Scatter Cushions (choice of Sunbrella fabrics)
- Sunbrella and weathermax foam cushions/sunbed for foredeck trampoline
- Sunbrella and weathermax foam cushions/sunbed for coachroof

House / Domestic Equipment

- Water maker - 155L - Spectra Newport 1000cc
- Dishwasher - 12 sets - Siemens/Bosch
- Microwave oven - Siemens/Bosch
- Washer/dryer (in starboard engine room)
- Upgrade fridge to 190L - Isotherm
- Additional 160L stainless steel drawer freezer - Isotherm
- Wine fridge (20 bottle) - Vitrifigo
- Ice Maker 23L - Isotherm
- One (1) Interior cabin fan
- Additional 110/230V socket
- Additional 12/24V or USB socket
- Four (4) Ocean LED Underwater Lights

Fwd Deck

- Retractable shade canopy at fwd cockpit with carbon poles

Aft Deck

- Gas Barbecue
- Shore water inlet regulator located starboard transom inner topside
- Removable dingy chocks with fast pins and stainless ratchet straps
- Carbon fiber swim ladder (includes brackets for stowage)
- Hydraulic swim platform / tenderlift with remote control, Seasmart cleats, safety locks, and folding padeyes (x4)
- Synthetic teak on swimming platform

- Two (2) Carbon Davits with One (1) electric winch
- Carbon Dive ladder rebated in aft deck
- Shower rebated in side combing
- Sup locker
- Wrapping winches, Two (2) aft, One (1) pop up winch fwd
- Hard top composite flybridge cover with three (3) sail viewing windows, blinds for windows, four (4) overhead LED lights
- Storm dodger for hard top, clear sectional panels, zippers and tracks, can enclose whole flybridge
- UV protection kit: Protective fabric covers for helm stations (x2), winches (x4) and large rope bags (x3)
- Four (4) Sunbrella and mesh rope bags
- Portable electrical engine throttle control
- One (1) Lithium Ion Battery (180Ahrs) and relevant system upgrades \$
- One (1) Mastervolt Inverter One (1) Victron Auto transformer Shore power cable reelers and two deckwash water hose reelers, one water supplied reeler

Docking and Anchoring Pack

- Eight (8) inflatable fenders (1500 x 450mm) with covers, portable electric pump and fender lines Carbon fiber boat hook
- Eight (8) 22mm mooring lines, cored, spliced, looped and whipped
- Anchor Bridle, 22mm with chain hook
- Chain counter and windless control on flybridge console

B&G Navigation & Electronics Options

- Two (2) Zeus3-16 Chartplotters for the flybridge helm stations
- One (1) 12" Zeus3 Chartplotter for the saloon nav station
- Precision-9 Compass, WR10 remote control + remote base, one (1) H5000 pilot controller, RF300 feed back unit
- NAIS-500S system + NSPL500 Kits
- ZG100 GPS Antenna
- V60 VHF handset & speaker + 1m Antenna VA-3 S/S whip & bkt
- B&G HALO20+ 36 NM 20-inch pulse compression radar, 60 RPM,
- VelocityTrackTM, Dual Range

Entertainment, Communications

- Allowance for accept 49" FlatscreenTV by navigation station (electrically deployed, articulating, TV owner supply)
- Outdoor Speaker Pack - six (6) additional Fusion Speakers - two (2) Flybridge and two (2) Foredeck+ two (2) Aft cockpit Fusion Entertainment system speaker upgrade to four (4) x Bose speakers in saloon

North Sails Tour UltraXC

- Square Top Mainsail NPL Tour UltraXC Norlam NLUC560
- Furling Genoa NPL Tour UltraXC NorLam NLUC440
- Furling Inner Jib w/ Battens NPL Tour UltraXC Norlam NLUC440
- A3 Asymmetric NorLon NY250
- Helix Furling Gennaker NPL Code Xi Xi09 CDT
- Facnor FX7000 continuous line furler including Top Down Adapter
- Set of Ctec Carbon/ Glass Mainsail Battens
- Storm Jib Polyester High Visibility 10oz Strom Oranga
- Ctech Snuffer spinnaker retrieval system for the A3
- Freight

Miscellaneous

- McConaghy Sata Toolbox
- Antifouling

Commissioning

- Commissioning

Safety Equipment

- Safety equipment allowance

Shipping to Hong Kong

- Shipping Boat to HK discharge to water

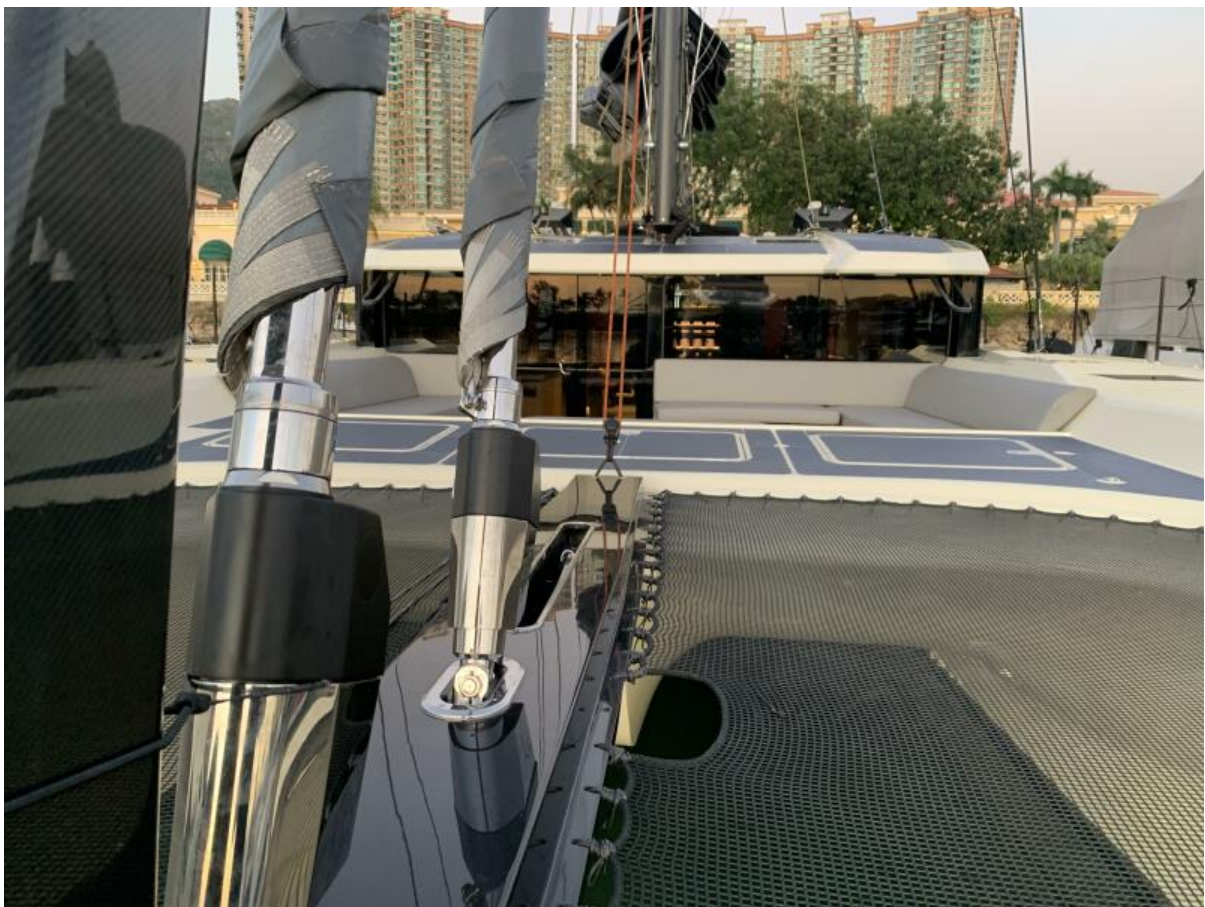
Additional Options Below (Not Included in Price)

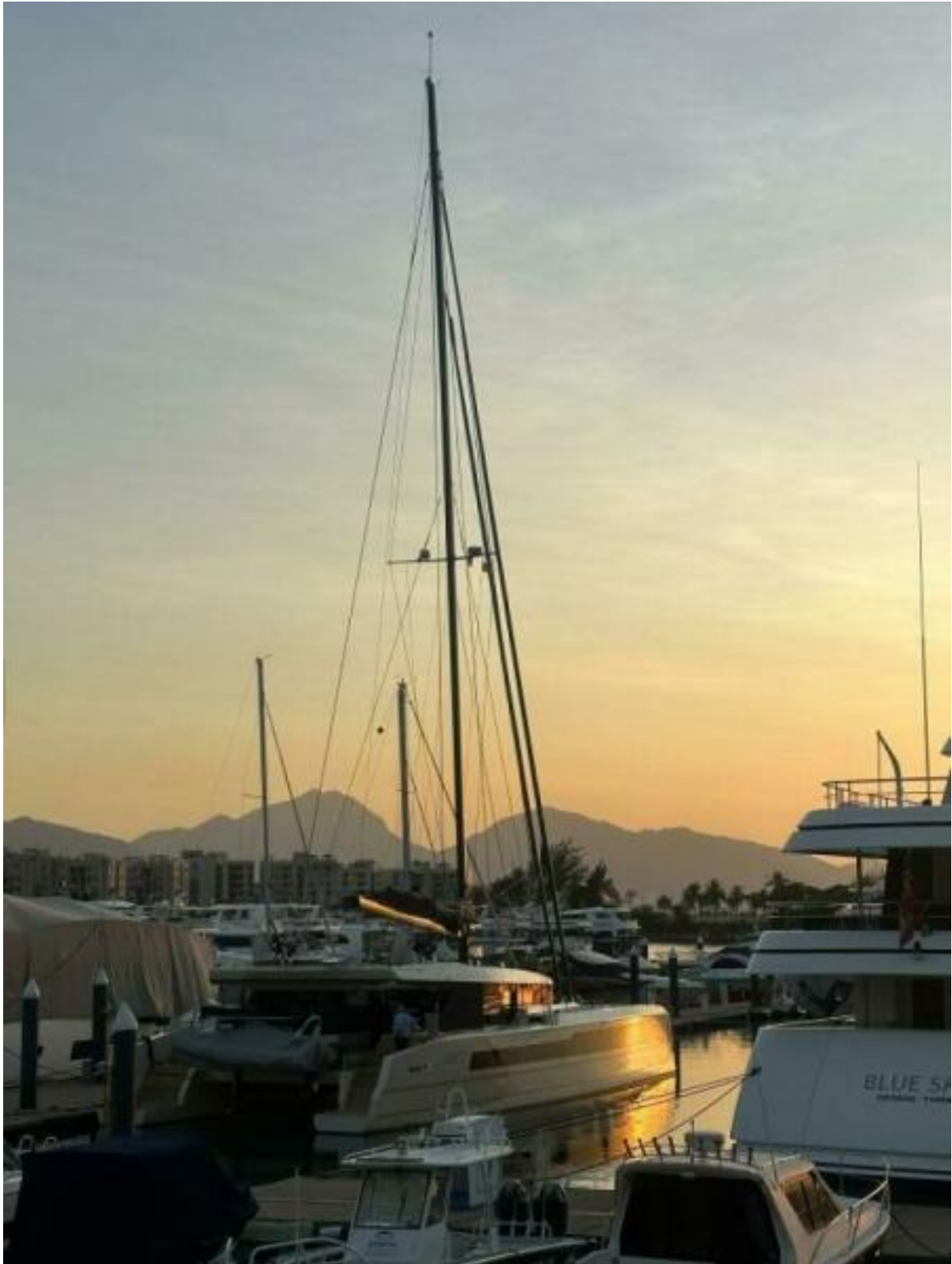
- Options for Raymarine Navigation & Electronics (Instead of B&G)
- Wifi network consolidator, booster and 4G antenna
- Upgrade to Captive winches package (Mainsheet x 1, Jib Sheet x 1, Genoa Sheet x 2)
- Upgrade from rack boom to furling boom
- Fireboy ASM Addressable Fire Detection for interior and engines
- Total of 8 cameras, 2 x fwd , 2 x aft, 2 x Aft deck, 2 x engine rooms
- Solar panels on Cabin top 14.4sqm, including electrical regulators
- Solar panels on Hard bimini 27sqm, including electrical regulators
- PE100T Dive compressor, with Two (2) dive bottles installed
- Liferaft lockers in aft cockpit sole
- Aft deck storage hatches
- McConaghy carbon fibre side boarding stairs
- McConaghy carbon fibre foldable passerelle customised with boat's name, bag, stanchions (x2), lifelines, clear chequer plate, non-skid, racks for stowage in the engine room and deck fittings
- Options for other Sail Packages instead of North Sails Tour UltraXC:North Sails 3Di Ocean
- Doyle Sails

Disclaimer

The company offers the details of this vessel in good faith but cannot guarantee or warrant the accuracy of this information nor warrant the condition of the vessel. A buyer should instruct his agents, or his surveyors, to investigate such details as the buyer desires validated. This vessel is offered subject to prior sale, price change or withdrawal without notice.









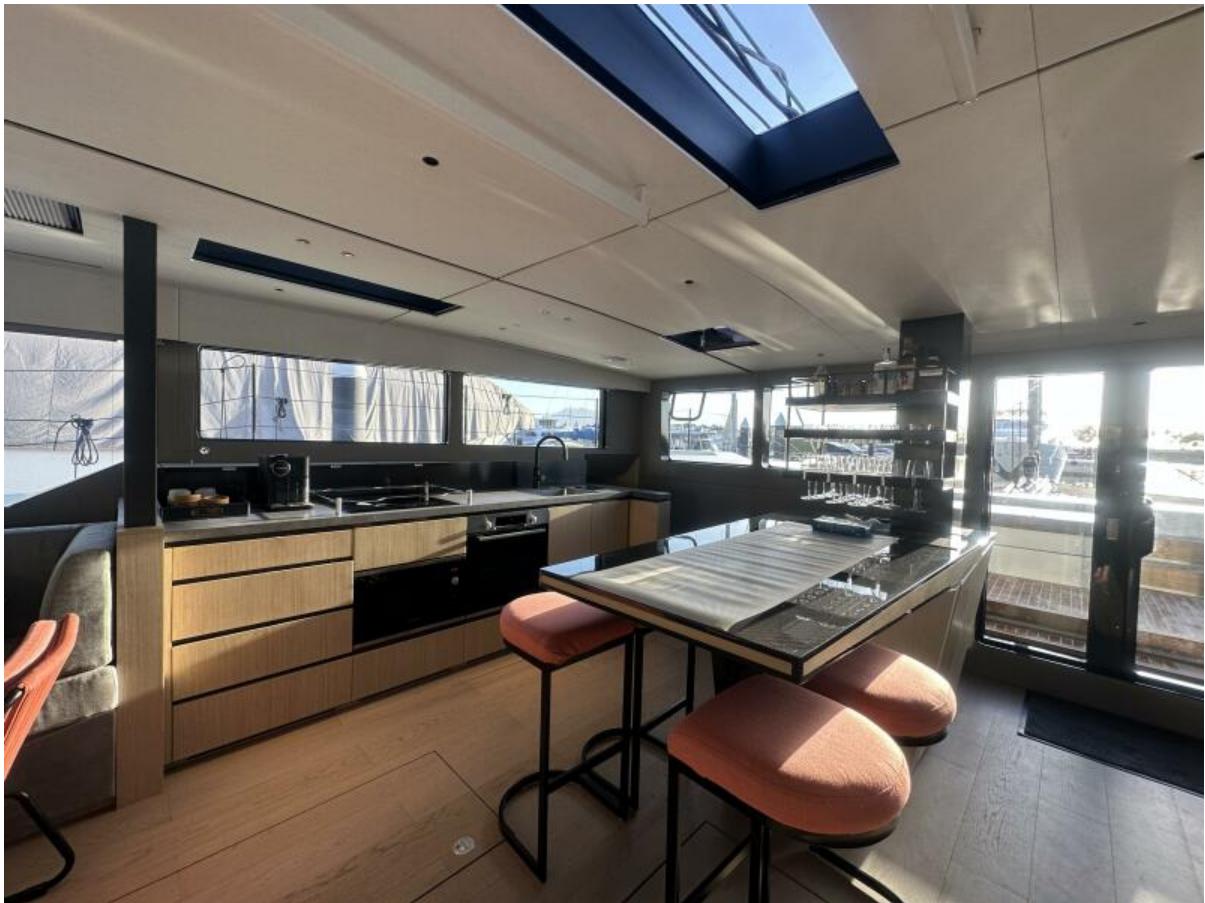








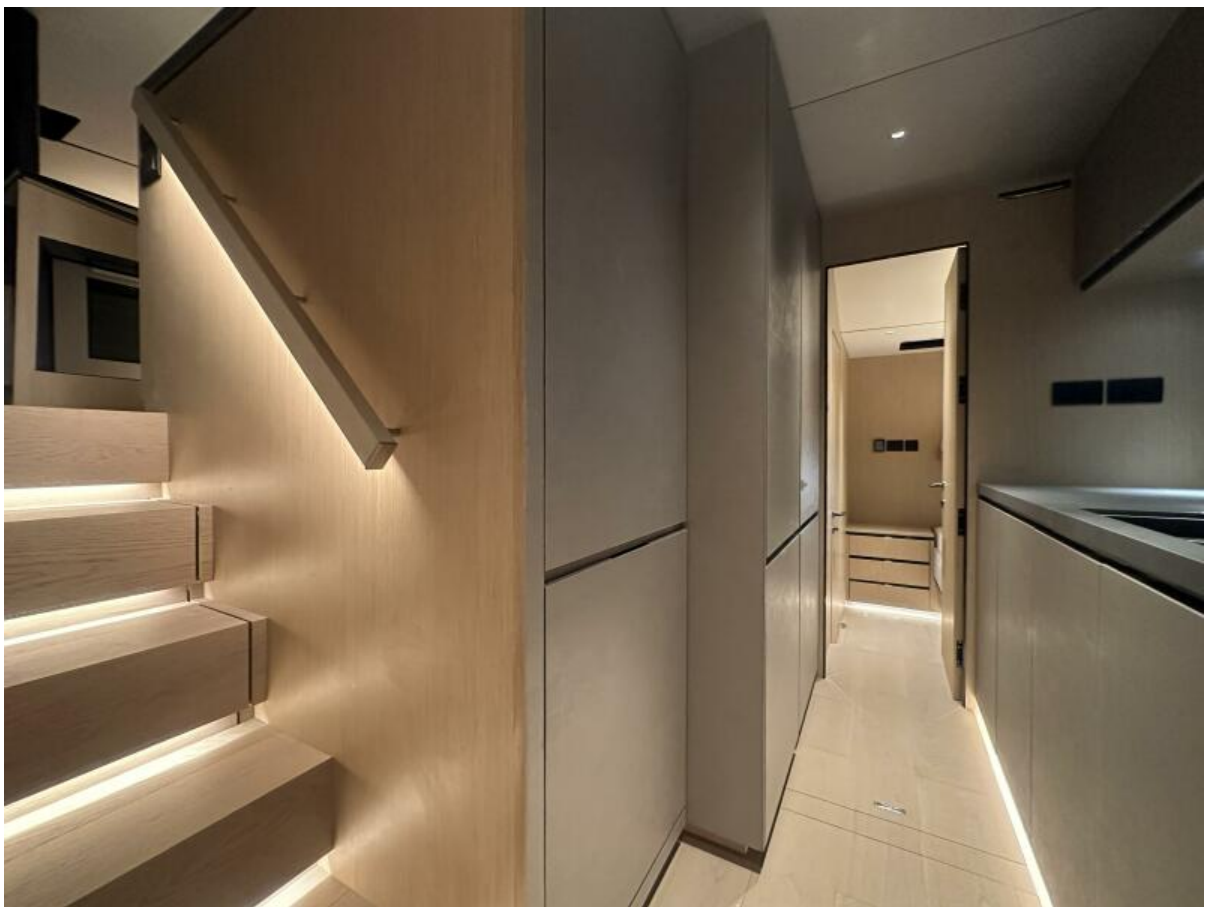










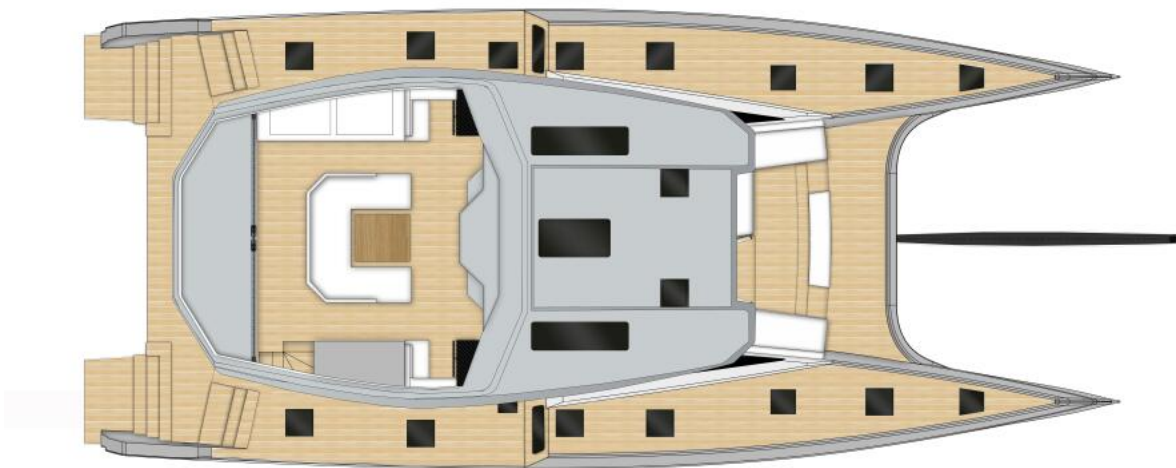






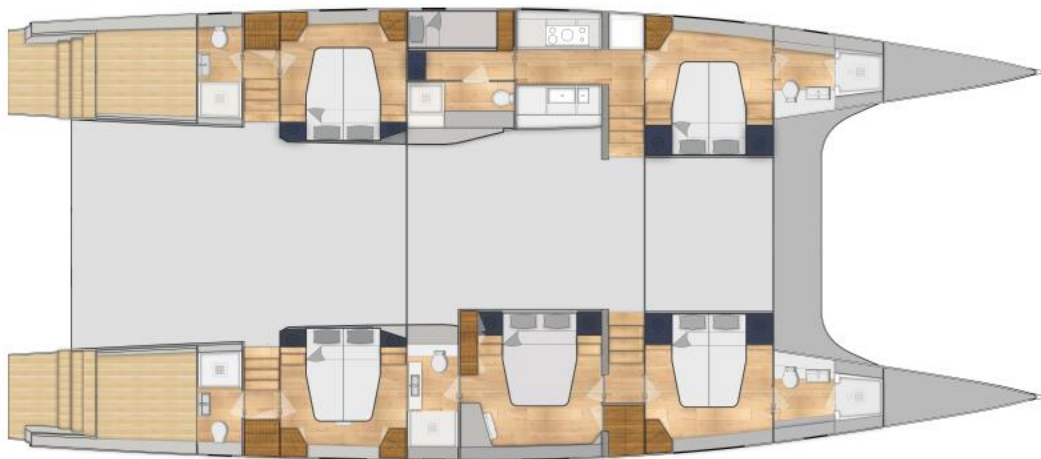






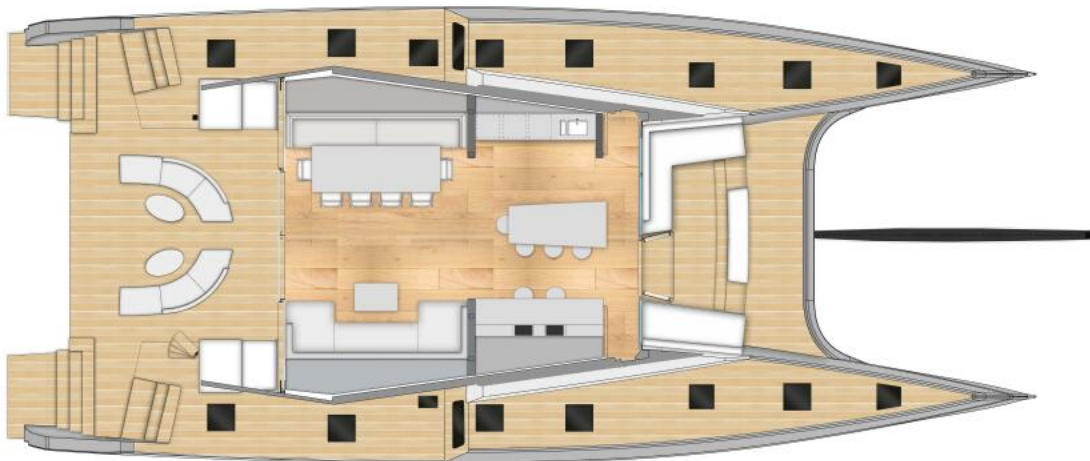
MC75
MULTIHULL

FLYBRIDGE



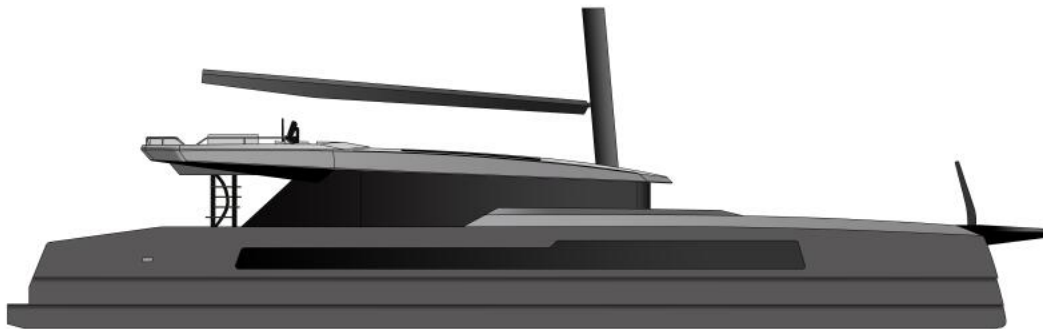
MC75
MULTIHULL

CABIN LAYOUT



MC75
MULTIHULL

MAIN DECK



MC75
MULTIHULL

PROFILE